



▶ **TRUSTEE AREA
SCENARIOS**

RIM OF THE WORLD UNIFIED SCHOOL
DISTRICT

JANUARY 21, 2022



**COOPERATIVE
STRATEGIES**
ASSESS • PLAN • FUND • BUILD

▶ CONSIDERATIONS IN TRUSTEE AREAS



Each area shall contain nearly equal number of inhabitants



Follow man-made and natural geographic features, as much as possible



Drawn to comply with the Federal Voting Rights Act



Respect incumbency, if possible



Compact and contiguous, as much as possible

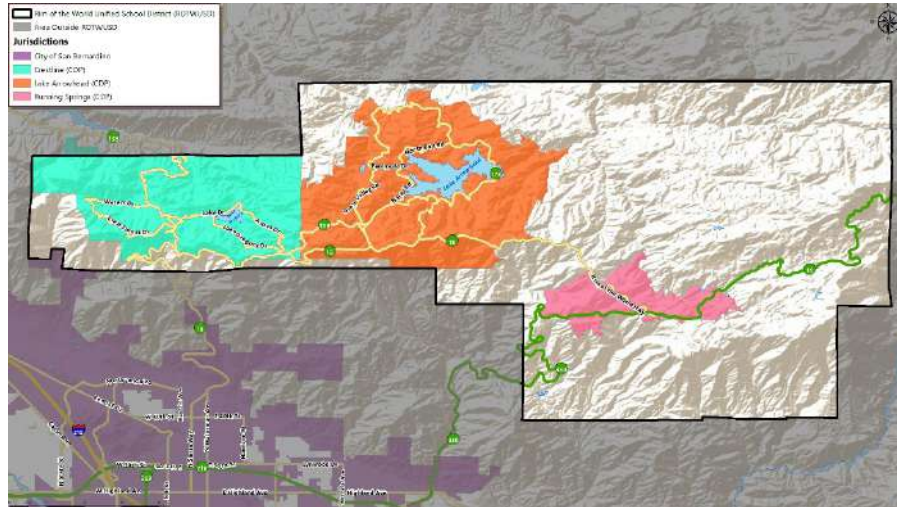


Other local considerations (i.e., school boundaries, locations of school sites)



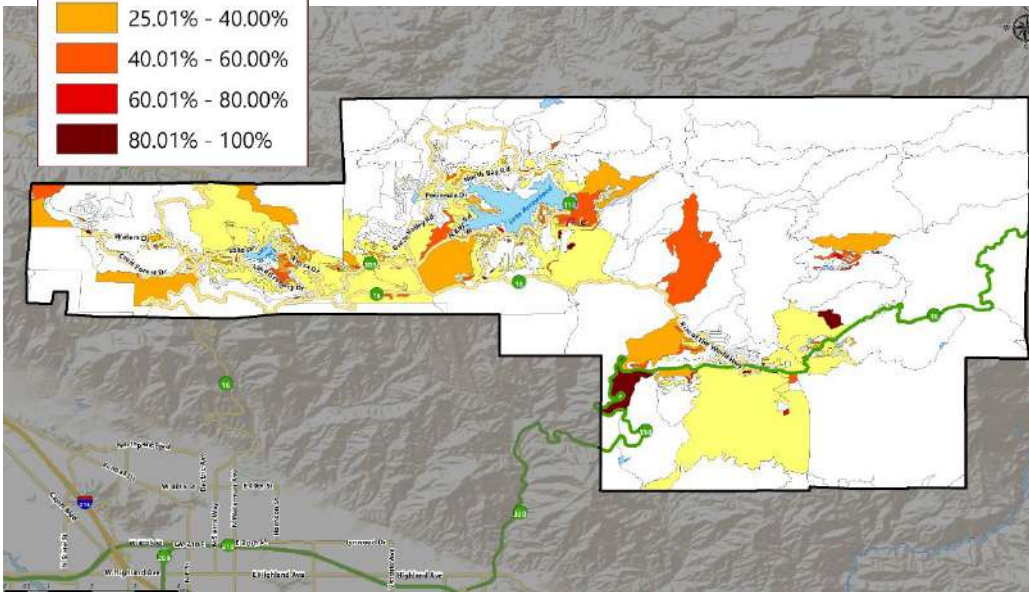
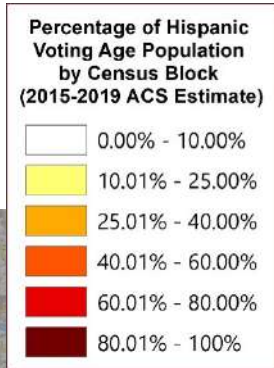
Respect communities of interest, as much as possible

► DISTRICT DEMOGRAPHICS
2020 CENSUS DATA



Population	Total Population		Age 18 and over	
	Total	%	Total	%
Hispanic/Latino	7,097	23.4%	4,925	20.0%
White	20,708	68.1%	17,728	71.9%
Black / African American	333	1.1%	270	1.1%
American Indian /Alaska Native	155	0.5%	145	0.6%
Asian	456	1.5%	422	1.7%
Native Hawaiian/ Pacific Islander	47	0.2%	38	0.2%
Other	216	0.7%	158	0.6%
Two or More Races	1,380	4.5%	981	4.0%
Total	30,392	100%	24,667	100%

► DISTRICT DEMOGRAPHICS
CITIZEN VOTING AGE POPULATION ESTIMATES



Population	2015-2019 CVAP	
	Total	%
Hispanic/Latino	2,453	14.5%
White	13,532	79.9%
Black / African American	230	1.4%
American Indian / Alaska Native	188	1.1%
Asian	266	1.6%
Native Hawaiian/ Pacific Islander	40	0.2%
Two or More Races	235	1.4%
Total	16,944	100%

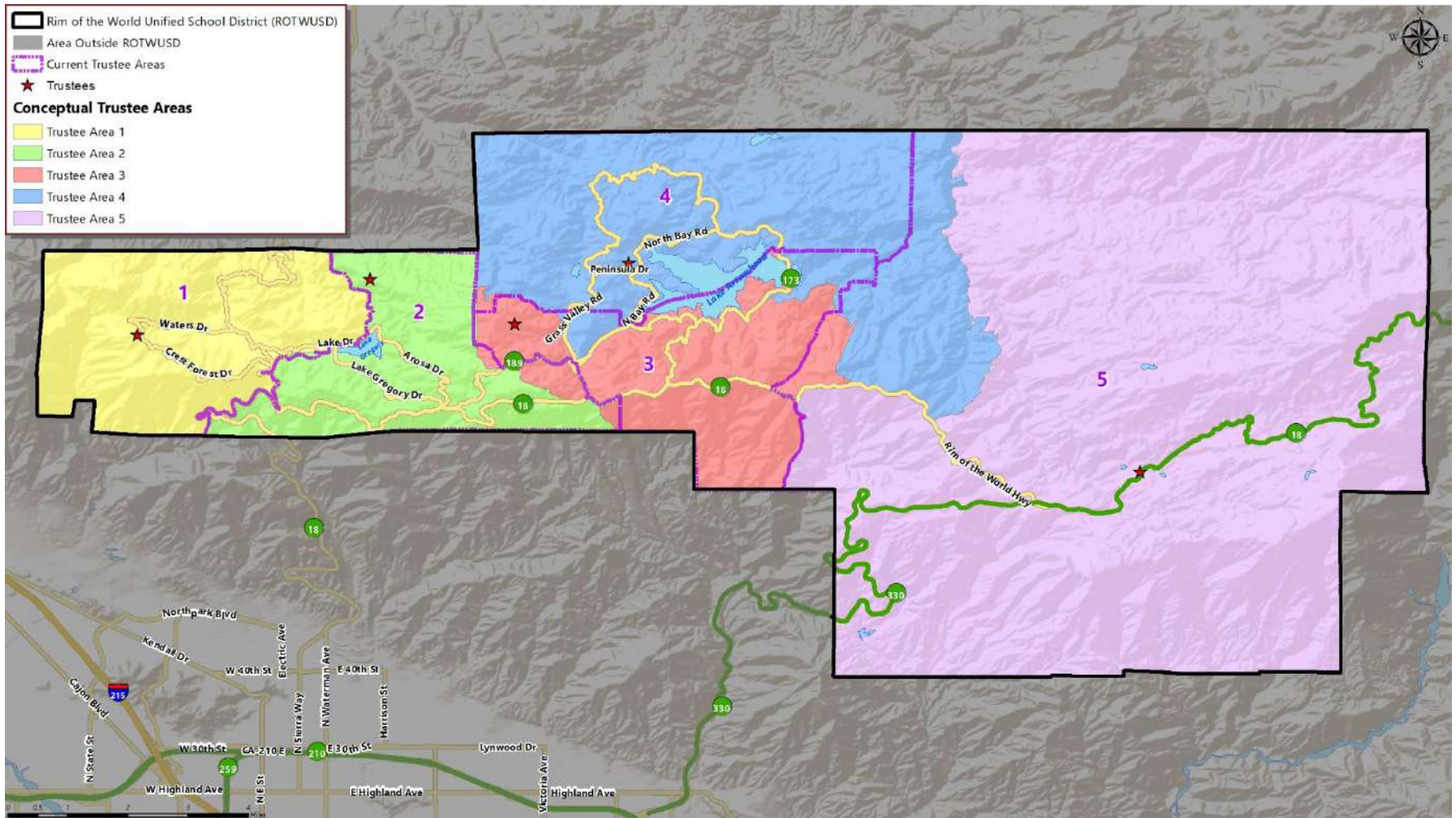
▶ CONCEPTUAL TRUSTEE AREAS SCENARIO CONSIDERATIONS

For both scenarios:

- The first consideration was total population balance for each trustee area.
- Due to multiple census blocks being consolidated, it was difficult to keep to the current trustee areas. But consideration of current trustee areas were taken into account whenever possible.
- Trustee area boundaries were kept as clean and congruent as possible, whenever possible (*in some instances the boundaries are reaching out into another trustee area, this is due to the shape of the census blocks, census block consolidation and to the natural mountainous region*).

▶ CONCEPTUAL TRUSTEE AREAS

SCENARIO 1



► **DEMOGRAPHICS**
SCENARIO 1

Total Population:	30,334	Ideal Trustee Area Size:	6,067	Variance:	6.7%
--------------------------	---------------	---------------------------------	--------------	------------------	-------------

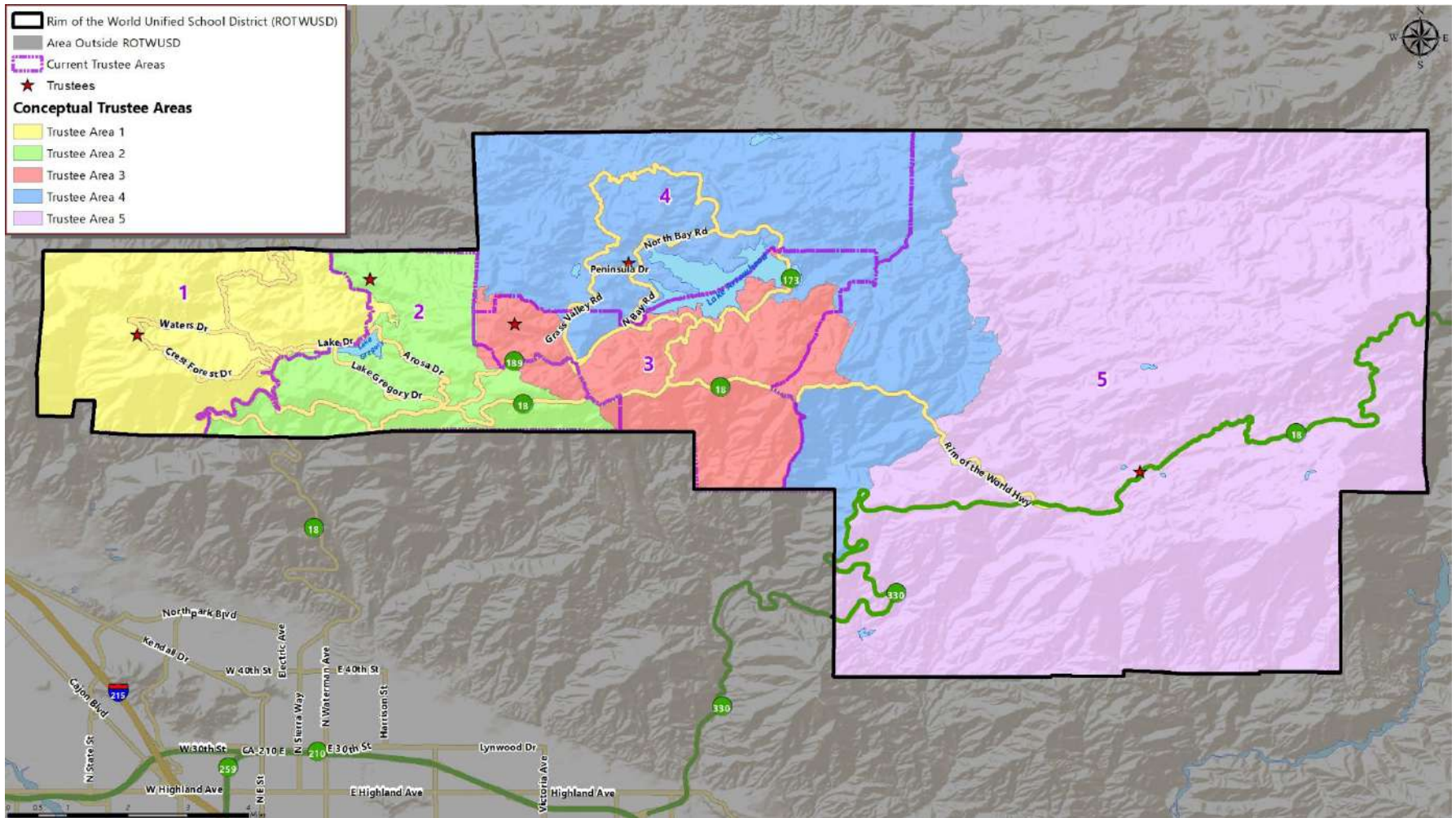
TRUSTEE AREA	Trustee Area 1		Trustee Area 2		Trustee Area 3		Trustee Area 4		Trustee Area 5	
TP* vs. CVAP**	TP	CVAP	TP	CVAP	TP	CVAP	TP	CVAP	TP	CVAP
Population	6,077	3,220	6,155	4,048	6,100	3,069	5,798	3,172	6,204	3,395
Population Variance	0.2%	N/A	1.5%	N/A	0.5%	N/A	-4.4%	N/A	2.3%	N/A
Hispanic/Latino	25.4%	12.7%	25.0%	18.1%	29.0%	18.3%	17.7%	9.5%	19.4%	14.0%
White	66.6%	85.6%	64.7%	74.9%	63.9%	76.8%	74.8%	84.7%	71.0%	77.6%
Black/African American	1.2%	1.0%	1.2%	1.4%	1.1%	0.3%	0.8%	2.3%	1.2%	1.7%
American Indian/Alaska Native	0.5%	0.0%	0.8%	2.3%	0.3%	0.9%	0.2%	0.8%	0.6%	1.2%
Asian	1.3%	0.1%	1.7%	2.1%	1.5%	2.3%	1.4%	0.9%	1.5%	2.2%
Native Hawaiian/Other Pacific Islander	0.1%	0.0%	0.1%	0.0%	0.1%	0.0%	0.2%	0.0%	0.3%	1.2%
Other	0.5%	0.0%	0.9%	0.0%	0.5%	0.1%	0.8%	0.1%	0.8%	0.1%
Two or More Races	4.4%	0.7%	5.4%	1.1%	3.5%	1.4%	4.1%	1.8%	5.2%	2.0%

*Total Population; Source: Redistricting Database for California, Published by Statewide Database on September 20, 2021

**Citizen Voting Age Population (CVAP); Source: American Community Survey, 2015-2019 Data

▶ CONCEPTUAL TRUSTEE AREAS

SCENARIO 2



► **DEMOGRAPHICS**
SCENARIO 2

Total Population:	30,334	Ideal Trustee Area Size:	6,067	Variance:	6.7%
--------------------------	---------------	---------------------------------	--------------	------------------	-------------

TRUSTEE AREA	Trustee Area 1		Trustee Area 2		Trustee Area 3		Trustee Area 4		Trustee Area 5	
TP* vs. CVAP**	TP	CVAP	TP	CVAP	TP	CVAP	TP	CVAP	TP	CVAP
Population	6,133	3,246	6,099	4,022	6,100	3,069	5,798	3,172	6,204	3,395
Population Variance	1.1%	N/A	0.5%	N/A	0.5%	N/A	-4.4%	N/A	2.3%	N/A
Hispanic/Latino	25.3%	12.7%	25.1%	18.2%	29.0%	18.3%	17.7%	9.5%	19.4%	14.0%
White	66.7%	85.6%	64.7%	74.9%	63.9%	76.8%	74.8%	84.7%	71.0%	77.6%
Black/African American	1.2%	1.0%	1.2%	1.4%	1.1%	0.3%	0.8%	2.3%	1.2%	1.7%
American Indian/Alaska Native	0.6%	0.0%	0.8%	2.3%	0.3%	0.9%	0.2%	0.8%	0.6%	1.2%
Asian	1.2%	0.1%	1.8%	2.1%	1.5%	2.3%	1.4%	0.9%	1.5%	2.2%
Native Hawaiian/Other Pacific Islander	0.1%	0.0%	0.1%	0.0%	0.1%	0.0%	0.2%	0.0%	0.3%	1.2%
Other	0.5%	0.0%	0.9%	0.0%	0.5%	0.1%	0.8%	0.1%	0.8%	0.1%
Two or More Races	4.5%	0.6%	5.4%	1.1%	3.5%	1.4%	4.1%	1.8%	5.2%	2.0%

*Total Population; Source: Redistricting Database for California, Published by Statewide Database on September 20, 2021

**Citizen Voting Age Population (CVAP); Source: American Community Survey, 2015-2019 Data



QUESTIONS