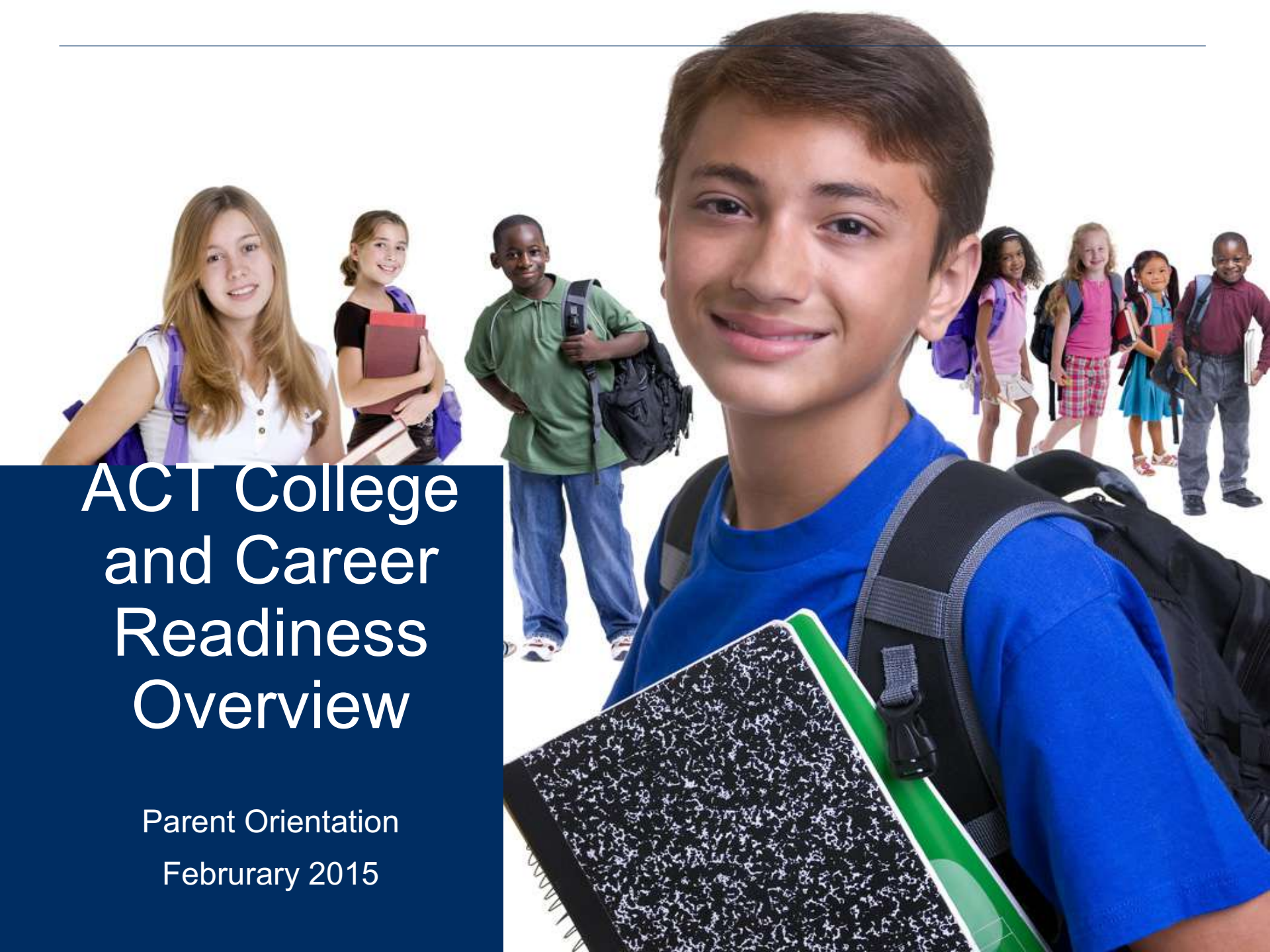


---



# ACT College and Career Readiness Overview

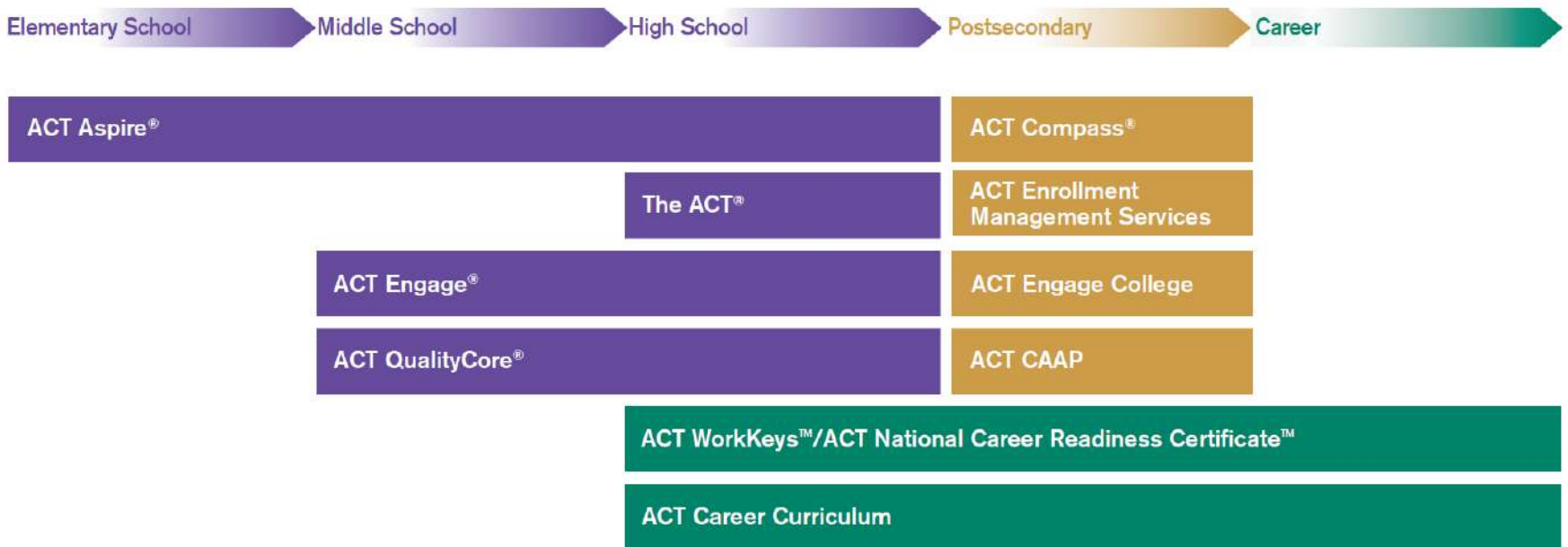
Parent Orientation  
February 2015

---

# Big IDEAS you should know about ACT and ACT Aspire

1. ACT measures student achievement in English Composition, Writing, Social Sciences, College Algebra and Biology
2. ACT sets benchmarks for student achievement that are empirically derived based on the actual performance of students in college.
3. The ACT definition of college and career readiness is widely accepted as the industry standard.
4. In 2014, ACT introduced ACT Aspire™—a computer-based, longitudinal assessment system that connects growth and progress from elementary grades through high school in the context of college and career readiness.

# ACT has and Elementary — Career Continuum of Assessments



---

# ACT Aspire, the ACT plus Writing and ACT WorkKeys for South Carolina

## Who will be tested?

- SCDE provides school eligibility to ACT
- ACT Aspire = Grades 3-8
- The ACT and ACT WorkKeys = Grade 11

## What are the test dates?

- ACT Aspire: April 28-30
- ACT: April 28
- ACT WorkKeys: April 29

---

The **ACT**<sup>®</sup>

**ACT**<sup>®</sup>



- Based on ACT analysis of actual student performance in college
- The minimum ACT test scores required for students to have a high probability of success in corresponding first-year, credit-bearing college courses
  - 50% chance of earning a B or better
  - 75% chance or better of earning a C or better

## The ACT College Readiness Benchmarks

College Course	ACT Subject-Area Test	ACT Benchmark
English Composition	English	18
College Algebra	Mathematics	22
Social Sciences	Reading	22
Biology	Science	23

Additional information can be found at [www.act.org/standard](http://www.act.org/standard)

- Curriculum-based college entrance exam
- Measures academic achievement
  - English
  - Math
  - Reading
  - Science
  - Writing (optional)
- Only college entrance exam based on number of correct answers
  - No penalty for guessing
- High-stakes assessment

# The ACT Features

## Test Score Scales

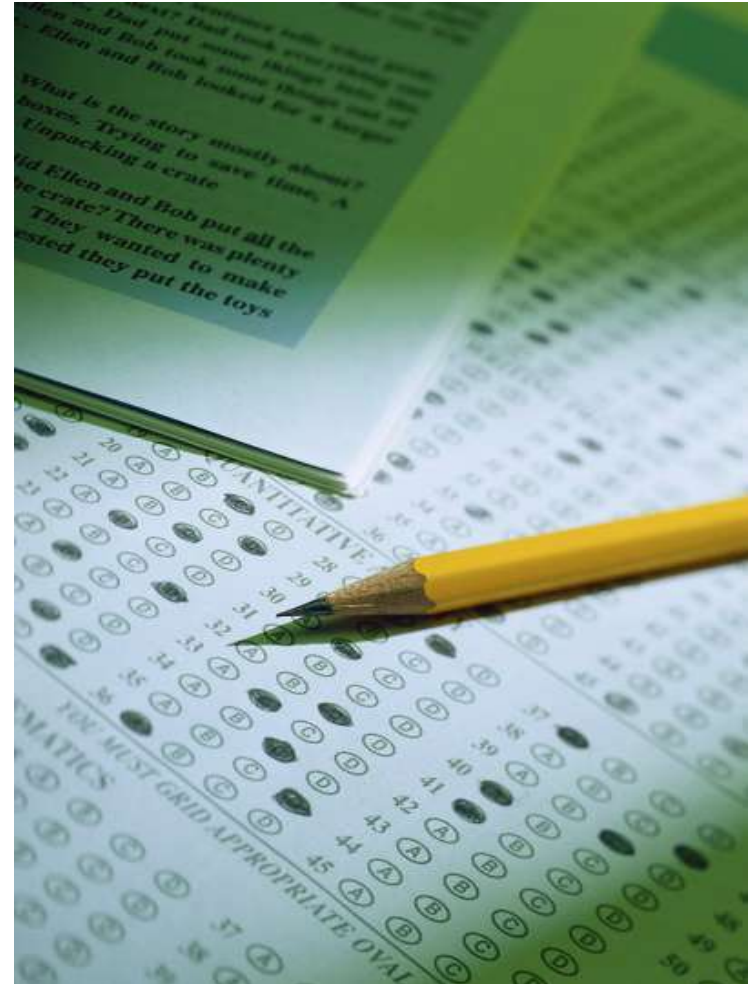
- English 1–36
  - Usage and Mechanics
  - Rhetorical Skills
- Mathematics 1–36
  - Pre-Algebra/ Elem Algebra
  - Interm Algebra/Coord Geometry
  - Plane Geometry/Trig
- Reading 1–36
  - Social Studies/Sciences
  - Arts/Literature
- Science 1–36

## Composite 1–36

- Average of four test scores (No writing)

## The ACT Plus Writing

- Combined English and Writing 1–36
- Writing Test subscore 2–12





## ACT Mathematics Test

- 60 questions, 60 minutes
- Multiple-choice questions that require the use of reasoning skills to solve practical problems
- Three subscores and a total test score
  - Pre-Algebra /Elementary Algebra
    - Pre-Algebra 20–25%
    - Elementary Algebra 15–20%
  - Intermediate Algebra/Coord. Geometry
    - Intermediate Algebra 15–20%
    - Coordinate Geometry 15–20%
  - Plane Geometry/Trigonometry
    - Plane Geometry 20–25%
    - Trigonometry 5–10%

## ACT Science Test

- 40 questions, 35 minutes
- Interpretation, analysis, evaluation, reasoning, and problem-solving skills
  - Biology, Earth/Space Sciences, Chemistry, and Physics
- One score
  - Data Representation 30–40%
  - Research Summaries 45–55%
  - Conflicting Viewpoints 15–20%

## ACT English Test

- 75 questions, 45 minutes
- 5 essays or passages, each with a set of multiple-choice questions
- Two subscores and a total test score
  - Usage/Mechanics
    - Punctuation 10–15%
    - Grammar and Usage 15–20%
    - Sentence Structure 20–25%
  - Rhetorical Skills
    - Strategy 15–20%
    - Organization 10–15%
    - Style 15–20%

## ACT Reading Test

- 40 questions, 35 minutes
- 4 sections, each containing one long or two shorter prose passages
- Two subscores and a total test score
  - Arts/Literature
    - Literary Narrative or Prose Fiction 25%
    - Humanities 25%
  - Social Studies/Sciences
    - Social Studies 25%
    - Natural Sciences 25%

### ACT Writing Test

- 1 writing prompt, 30 minutes
- Measures writing skills emphasized in high school English classes and in entry-level college composition courses
- The ACT Writing Exam will be included as part of the Statewide ACT Testing for South Carolina

# The ACT Features

## Student Score Report

- Understand your scores
  - [www.actstudent.org/scores/understand](http://www.actstudent.org/scores/understand)
- Using your ACT results
  - [www.act.org/aap/pdf/Using-Your-ACT-Results.pdf](http://www.act.org/aap/pdf/Using-Your-ACT-Results.pdf)

### The ACT Plus Writing Student Report

STUDENTS NAME: ANN C TAYLOR      ACT ID: 54116290  
 HIGH SCHOOL NAME: WHEAT RIDGE SR HIGH SCHOOL      SSN: XXX-XX-2013  
 HIGH SCHOOL CODE: 061-450      TEST DATE & LOCATION: APR 2015, NATIONAL

#### Your ACT Scores

Rank: Approximate percent of ACT-tested students at or below your score

Section	Score	In Your State	In the U.S.
<b>Composite Score</b>	<b>21</b>	56%	55%
ENGLISH	28*	74%	72%
Usage/Mechanics	12	72%	71%
Rhetorical Skills	12	71%	71%
MATHEMATICS	19	47%	47%
Pre-Algebra/Elem. Algebra	11	58%	58%
Algebra/Coord. Geometry	10	50%	50%
Plane Geometry/Trig.	09	39%	39%
READING	23*	65%	65%
Social Studies/Sciences	12	68%	68%
Arts/Literature	11	59%	59%
SCIENCE	18	32%	32%
COMBINED ENGLISH/WRITING	25	79%	79%
Writing (score range 2 to 12)	10	92%	92%

The Combined English/Writing score ranges from 1 to 36 and is a combined measure of the Writing and English tests. The Writing score ranges from 2 to 12. Your ranks for these two scores are based on recent ACT-tested students who took the Writing test.

COMMENTS ON YOUR ESSAY: YOUR ESSAY SHOWED RECOGNITION OF THE COMPLEXITY OF THE ISSUE BY PARTIALLY EVALUATING ITS IMPLICATIONS. GENERAL STATEMENTS IN YOUR ESSAY WERE WELL SUPPORTED WITH SPECIFIC REASONS, EXAMPLES, AND DETAILS. SOME VARIED SENTENCE STRUCTURES AND PRECISE WORD CHOICE ADDED CLARITY AND INTEREST TO YOUR WRITING.

\*Your College Readiness: If your scores are at or above the following ACT benchmark scores, you will likely be ready for first-year college courses—English 16, Mathematics 22, Reading 12, Science 23.

Looking for more information about your individual strengths and test preparation? Go to [www.actstudent.org](http://www.actstudent.org).

ACT, Inc.—Confidential Restricted when data present

#### Your College Reports

At your direction, your scores from this test date are being reported to the colleges shown below. College planning information is provided for the first four choices you listed when you registered or tested. (Fifth and sixth choices, if any, appear just above your first choice.) Your GPA was calculated from the grades you reported. To view additional college planning information or to send additional reports, visit [www.actstudent.org](http://www.actstudent.org).

College Name and Code	9521	What is the profile of enrolled 1st-year students at this college?			Is the program of study you prefer offered?	What are the approximate annual tuition and fees?*		What percent of 1st-year students receive financial aid based on:†	
		High School Class Rank	ACT Composite Score	High School Grade Point Average		In-state	Out-of-state	Need?	Merit?
UNIVERSITY OF OMEGA OMEGA CO 800/498-6069 <a href="http://www.universityofomega.edu">www.universityofomega.edu</a>	9521	Majority in top 50%	Middle 50% between 16-24	2.76	Yes: 4-Yr. Degree	\$5,600	\$12,000	67%	20%
ALPHA UNIVERSITY UNIVERSITY CENTER 1A 319/337-1000 <a href="http://www.alpha.edu">www.alpha.edu</a>	9099	Majority in top 25%	Middle 50% between 21-26	3.12	Yes: 4-Yr. Degree	\$9,000	\$15,000	85%	27%
BETA COMMUNITY COLLEGE CLARKSTON CO 800/498-8481 <a href="http://www.betacc.edu">www.betacc.edu</a>	8866	Majority in top 75%	Middle 50% between 16-21	2.49	Yes: Program Avail	\$4,000	\$4,000	58%	18%
MAGNA COLLEGE PLAINVIEW OH 800/525-8926 <a href="http://www.magna.edu">www.magna.edu</a>	8905	Majority in top 50%	Middle 50% between 21-26	2.71	Yes: 4-Yr. Degree	\$8,500	\$16,000	90%	35%

**Your Information**

Your Class Rank	Your Composite Score	Your Calculated GPA	Your Selected Major
TOP 25%	21	3.29	ACCOUNTING

Check with colleges for recent changes in information. A dash (—) indicates information was not provided or could not be calculated. \*Comprehensive fee including room and board. © 2014 by ACT, Inc. All rights reserved.



**ACT**<sup>®</sup> WorkKeys<sup>®</sup>

**ACT**<sup>®</sup>



- Job Seekers, Employees, and Students
  - Improve career and economic outcomes
  
- Educators
  - Test students' ability to apply knowledge/experience to workplace situations
  - Prepare students for success in a variety of career pathways and demonstrate instructional impact
  
- Employers
  - Better understand the level of skills their jobs require
  - Make better decisions about who to hire, train, and promote



---

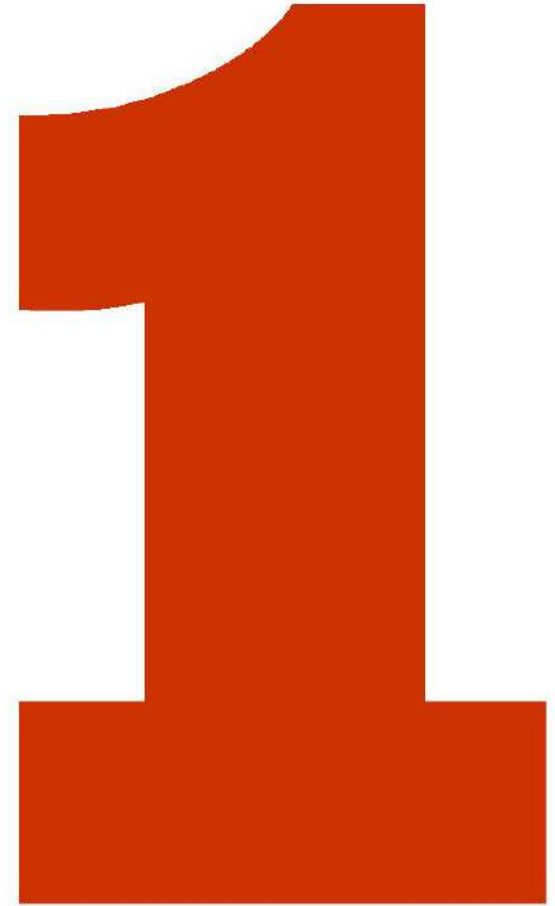
# Earning The Certificate

## Take Three WorkKeys® Assessments

- Applied Mathematics
- Locating Information
- Reading for Information

*WorkKeys assessments measure “real world” workplace skills critical to job success.*

Computer Delivered (WKIV) or  
Pencil/Paper  
55/45 minutes to complete each  
Not required to take all at once  
Can Retake



---

# Earning The Certificate

Score the following levels or higher  
on all assessments:

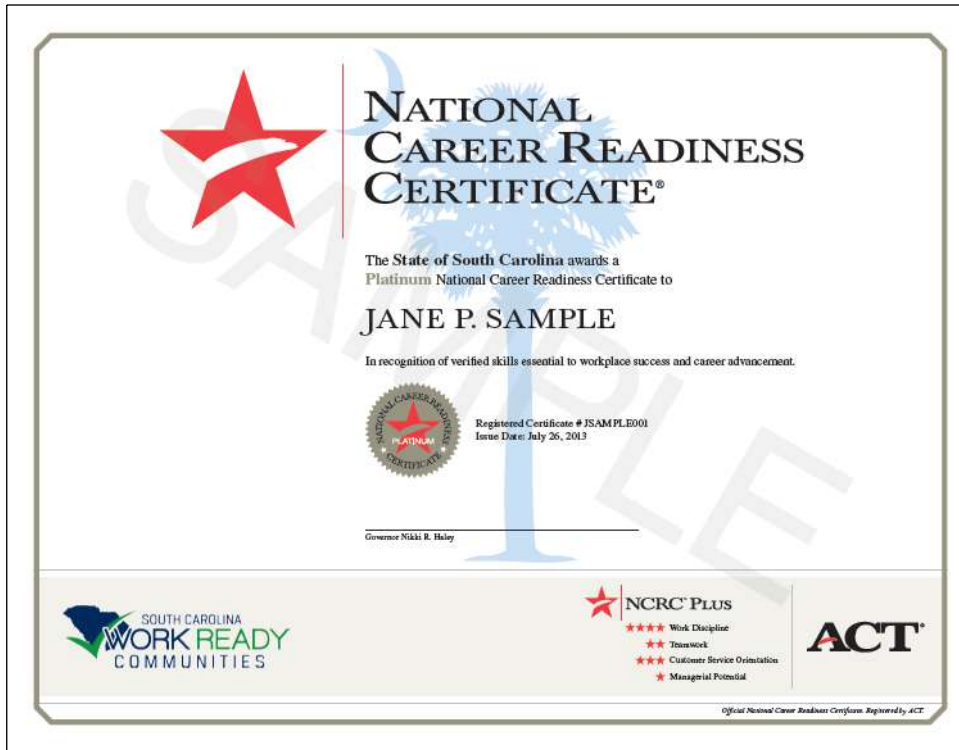
- **6** and above – Platinum
- **5** and above – Gold
- **4** and above – Silver
- **3** and above – Bronze



# National Career Readiness Certificate (NCRC)

# 3

The NCRC™ is a credential that is:



- Evidence-based
- Industry-recognized
- Portable
- Used to document essential skills linked to workplace success
- Awarded at four levels: Bronze, Silver, Gold, and Platinum

# Percentage of U.S. Examinees Earning The Certificate



Source: ACT research based on 1,837,880 examinees.