



# Westward Expansion

MANIFEST DESTINY AND THE TRANSCONTINENTAL RAILROAD

# America in the 1820s





- ▶ **America in 1865**
- ▶ No major Railroads went West
- ▶ Travel West was extremely long and dangerous – 2-3 Months by land (Native American Resistance)
- ▶ 4-6 Months by boat, All the way around South America

# Factors That Contributed to the Settlement of the West

1. Manifest Destiny
2. Gold Discovered in California
3. Homestead Act of 1862
4. Transcontinental Railroad
5. The American Dream

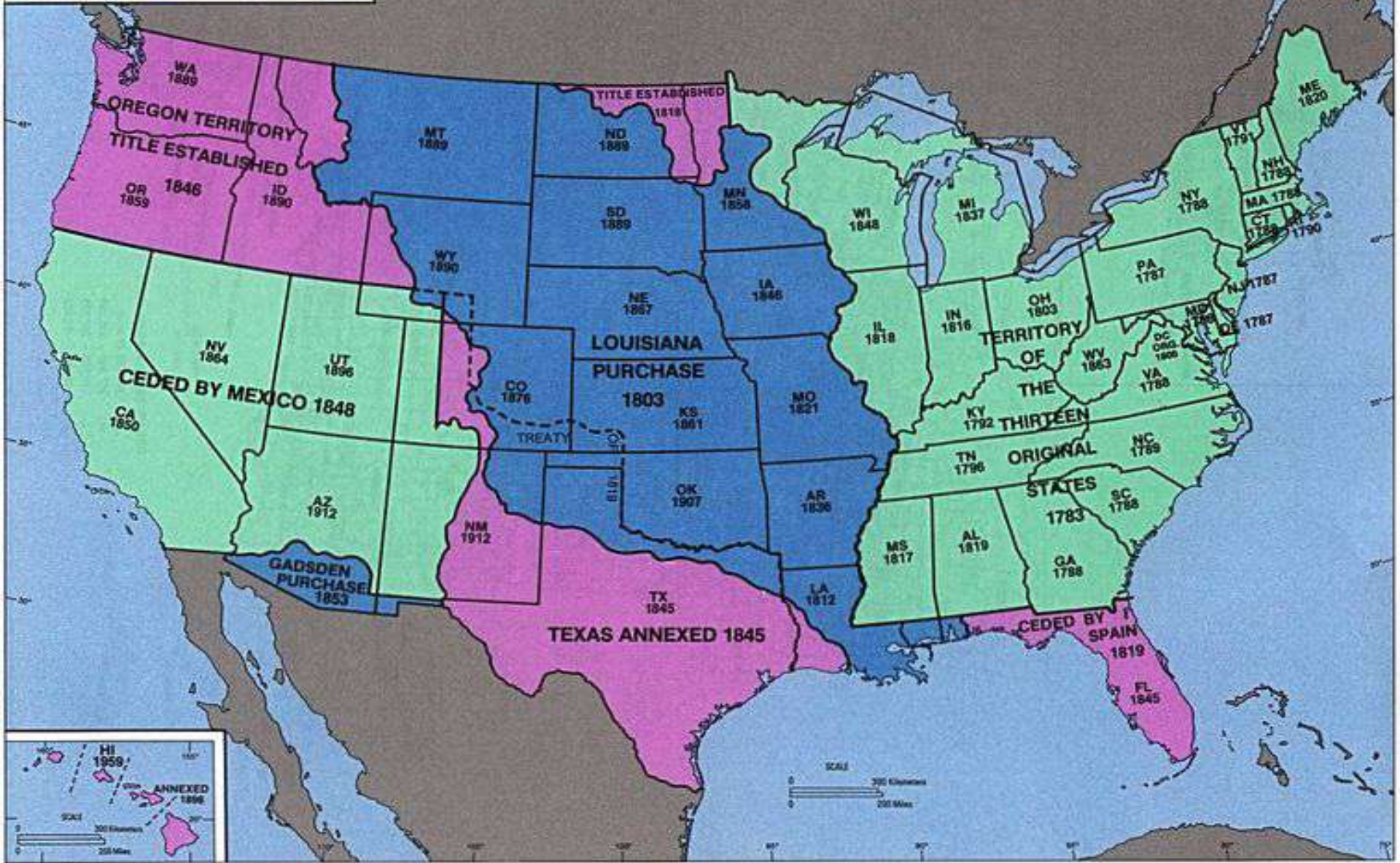
# Manifest Destiny: Go West Young Man

- ▶ The west was viewed as the great untapped Frontier
- ▶ Manifest Destiny – The belief that it was America's mission to expand from ocean to ocean, spreading democracy and freedom
- ▶ Americans believed it was their God-given duty to conquer the Western territories and unify the Nation



# Territorial Expansion of U.S.

- ▶ 1803 Louisiana Purchase
- ▶ 1845 Texas
- ▶ 1848 Mexican-American War: Colorado, Arizona, New Mexico, Wyoming, California, Nevada, and Utah
- ▶ By 1850, America gains the Oregon Territory





# 1848-49 Gold Rush

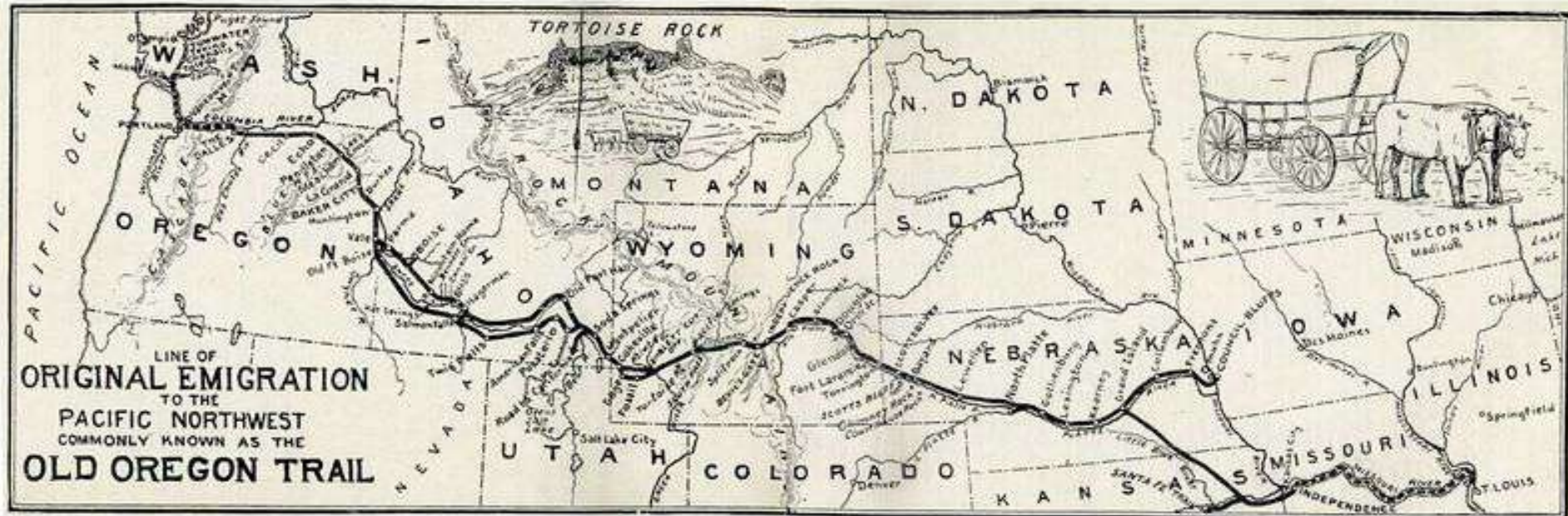
- ▶ 1848 Gold Discovered in California
- ▶ Thousands of Americans head West lured by the idea of becoming instant millionaires
- ▶ West becomes the land of opportunity
- ▶ Americans were on the move

# Homestead Act of 1862

- ▶ The U.S. Government encouraged the settlement of the West
- ▶ 1862 Homestead Act – Millions of acres were given away free in the West to anyone that would claim land and live on it for 5 years
- ▶ First come first serve basis
- ▶ Other Public land was sold for \$2.50 an acre

# The Oregon Trail

- ▶ The only way West by land was via the Oregon Trail
- ▶ 2,170 Mile route
- ▶ Dangerous and Difficult/Donner Party





FOR  
**CALIFORNIA!**

**DIRECT**

**EXTRAORDINARY INDUCEMENTS!!**  
**THIRTY-FIVE DAYS TO THE GOLD REGIONS!**

The "California Steam Navigation Co."

Will dispatch their first vessel from New-York, the NEW and SPLENDID

**STEAM SHIP!**

**NICARAGUA**

DAVID JERHOLD, Master, positively

**On FRIDAY, MARCH 23d, 1849,**

Via the River St. Juan and Lake Nicaragua, across the Isthmus of Leon.

Capt. BRONSON, of the U. S. Topographical Engineers.

Having professional reports of the country, accompanied the most reliable reports that by following the water courses and following them by the route which we propose all of these rivers, the River St. Juan, the River St. Pedro, and the River St. Carlos, could be navigated with ease and safety, and according to the arrangements made by the Company for carrying passengers and goods, the route is the most direct and the most rapid.

**200 JACK ASSES!**

Having professional reports of the country, accompanied the most reliable reports that by following the water courses and following them by the route which we propose all of these rivers, the River St. Juan, the River St. Pedro, and the River St. Carlos, could be navigated with ease and safety, and according to the arrangements made by the Company for carrying passengers and goods, the route is the most direct and the most rapid.

**The Quickest, Safest and Cheapest!!**

**Price of Passage Through Ninety Dollars!**

To be paid in SIXTEEN, Dimes and half Dimes, taken only.

For further particulars apply on board, at the foot of South Street, N. Y., or to the undersigned Agents for the Company. Applications by mail, to meet attention, must be post paid, addressed to the Company's Agents.

HOBSON, BROTHERS & Co., 127 Wall Street, (opposite the Bullhead.)

The Other way  
West was  
by Boat

# The Railroad Boom



- ▶ In 1865, America had 50,000 miles of railroad, primarily in the Northern states
- ▶ No railroads went West
- ▶ America experienced a tremendous railroad boom after the Civil War
- ▶ Over 150,000 miles of track was built between 1865-1895

# Man of Steel: Henry Bessemer

- ▶ Before 1850, railroads and trains were made of iron
- ▶ Iron is brittle, and railroads were unreliable and under constant repair
- ▶ 1850 Henry Bessemer (England) invents a way to turn iron ore into steel



# Bessemer Process

- ▶ Converted Iron ore into steel
- ▶ Steel is lighter, stronger, and more malleable (flexible) than iron
- ▶ Steel could now be mass produced
- ▶ Steel was inexpensive
- ▶ Bessemer opens the door to an Industrial revolution in America
- ▶ A new age of building began: skyscrapers, bridges, and railroads



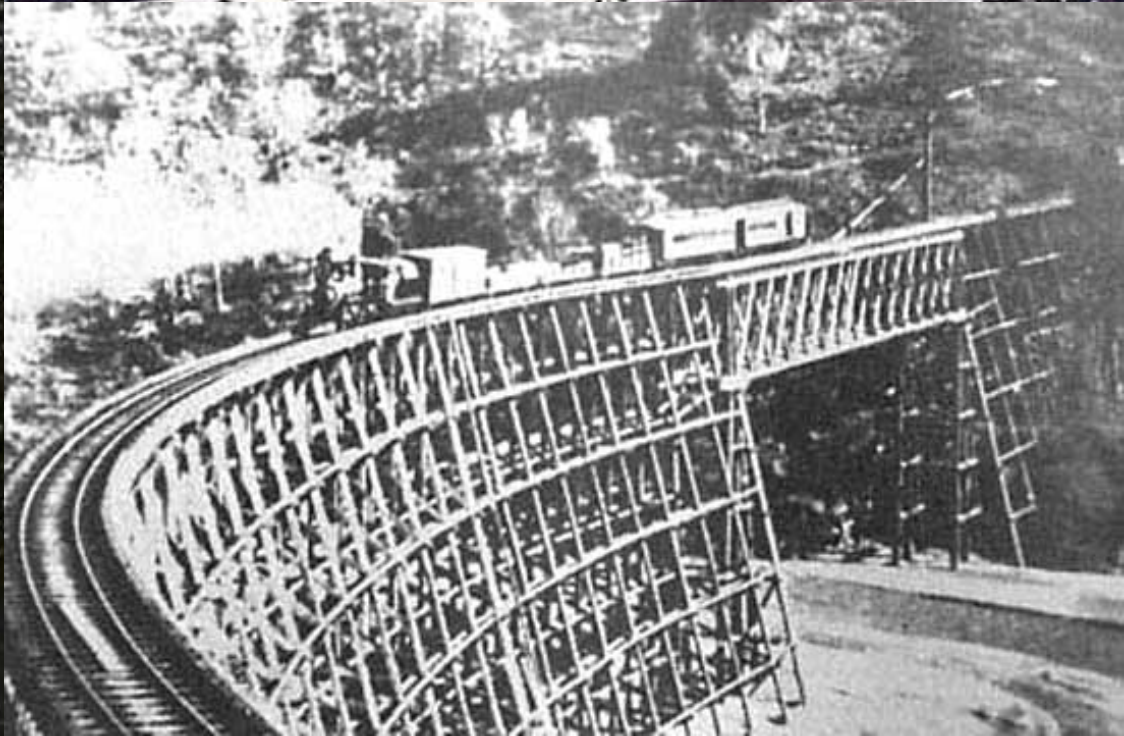
# Transcontinental Railroad

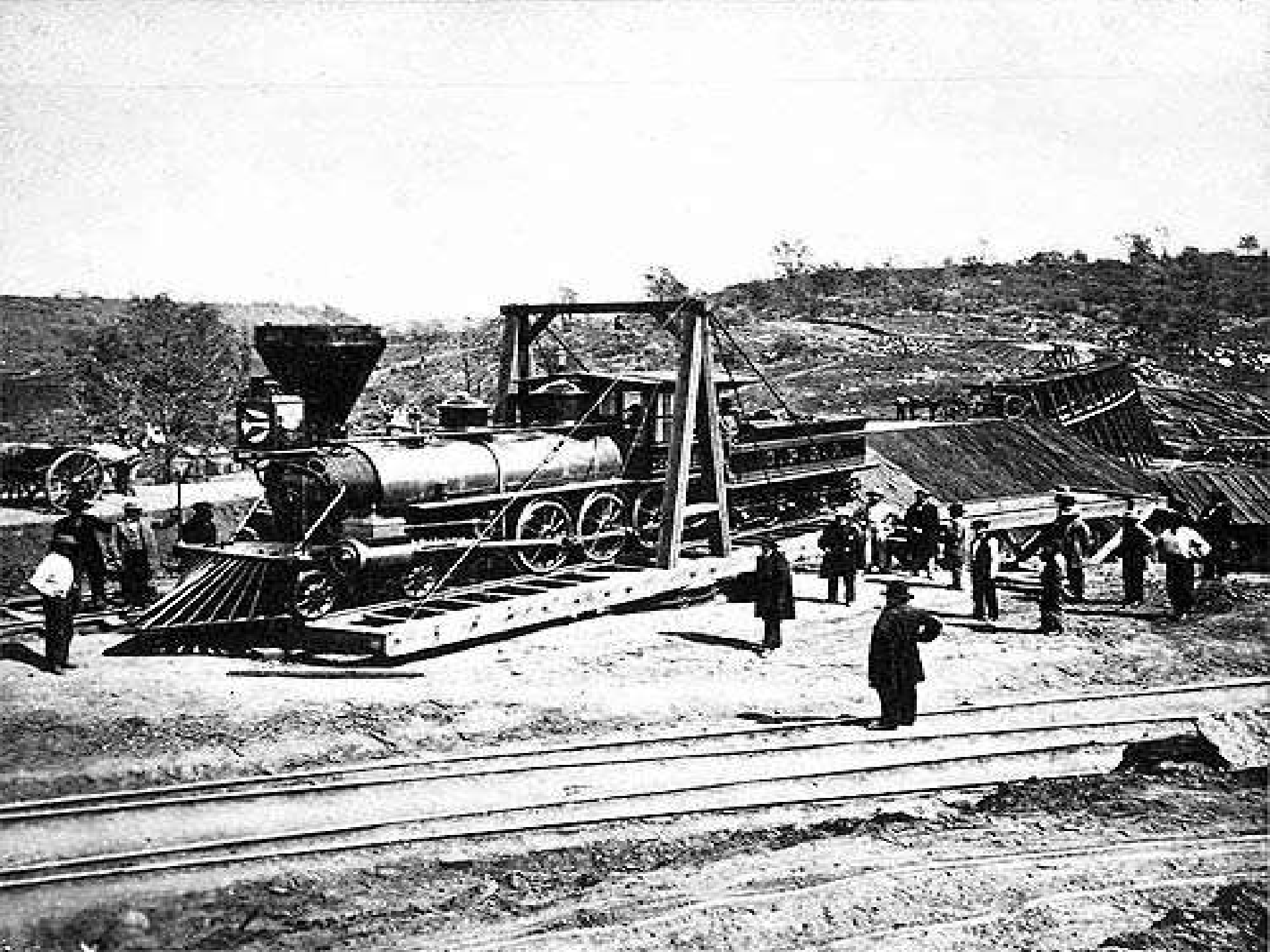


- ▶ The 1<sup>st</sup> Transcontinental Railroad was started in 1869
- ▶ Gov. granted over 200 million acres of land for the project and offered low interest rate loans
- ▶ It ran from Sacramento, California to Omaha, Nebraska
- ▶ Union Pacific RR began laying track Westward out of Omaha
- ▶ Central Pacific RR began laying track Eastward out a Sacramento



















# The Golden Spike



- ▶ On May 10<sup>th</sup>, 1869, at Promontory Point, Utah, the “Golden Spike” was driven into the ground uniting both the Union Pacific and Central Pacific Railroads
- ▶ 1<sup>st</sup> railroad line connecting the East to the West
- ▶ Travel time about 4-5 days from NY to California
- ▶ Considered one of the greatest architectural achievements in American History
- ▶ Nothing could stop Manifest Destiny



*The Last Rail is Laid*



# Transcontinental Railroad



Promontory Point

Sacramento

Omaha



- Central Pacific
- Union Pacific
- Added later

LEGEND  
State or State Equivalent Boundary  
County or County Equivalent Boundary  
Scale: 1:100,000

1869. MAY 10TH 1869.

**Great Event!**  
RAIL ROAD FROM THE  
**ATLANTIC TO THE PACIFIC**  
**GRAND OPENING**  
OF THE

**UNION PACIFIC**  
RAIL-ROAD

Via Omaha and Platte Valley.

PASSENGER TRAINS LEAVE

**OMAHA**

ON THE ARRIVAL OF TRAINS FROM THE EAST.

**THROUGH TO SAN FRANCISCO IN LESS THAN FOUR DAYS**  
Avoiding the Dangers of the Sea!

TRAVELERS FOR PLEASURE, HEALTH OR BUSINESS WILL FIND A TRIP OVER THE ROCKY MOUNTAINS HEALTHY & PLEASANT

**LUXURIOUS CARS AND EATING HOUSES ON THE UNION PACIFIC R. R.**  
FULLMAN'S PALACE SLEEPING COACHES run with all THROUGH PASSENGER TRAINS

**GOLD, SILVER & OTHER MINERS**  
CALIFORNIA!

CONNECTIONS MADE AT CHEYENNE FOR

**DENVER, CENTRAL CITY & SANTA FE.**  
At Ogden & Corinne for **HELENA, VIRGINIA CITY, S. LAKE CITY** and Arizona.


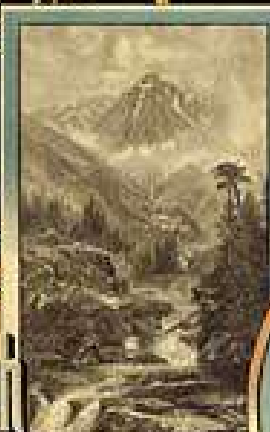

THROUGH TICKETS for sale at all principal Railroad Offices. Be sure that they read Via **PLATTE VALLEY** or **OMAHA**.

COMPANY'S OFFICE TO BE CALLED AT, OPPOSITE CITY HALL AND COURT HOUSE SQUARE, CHICAGO. CHARLES E. FUGGIE, TICKET AGT.

A. H. COOKE      JOHN P. HART      J. BUDD      W. SNYDER.

Harriet & Lemuel, Railroad Printers, 104 and 106 Broadway Street, Chicago.

**THE UNION PACIFIC Railway**

Through **KANSAS and NEBRASKA**

**TO THE ROCKIES AND BEYOND**

THOS. L. KIMBALL, Ticket Agent, Chicago, Ill.  
J. W. MOORE, Ticket Agent, Omaha, Neb.

M. T. DENNIS, Ticket Agent, Denver, Colo.  
J. B. SMITH, Ticket Agent, Santa Fe, N.M.

# Technological Improvements

- ▶ RR track was standardized – width of steel rail, and width from rail to rail
- ▶ National signals are established
- ▶ George Westinghouse developed air brakes
- ▶ 1883, A National time and Time Zones are established
  - ▶ For scheduling, everyone was on the same time





Canada

Pacific Ocean

Pacific Time

Mountain Time

Central Time

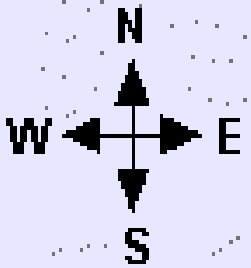
Eastern Time

Atlantic Ocean

Gulf of Mexico

Mexico

# Time Zones of the Contiguous US



500 miles

# The Railroad's Impact

- ▶ Transportation of people and goods was quicker and cheaper
- ▶ New era of interstate trade and commerce
  - ▶ 1865 – it cost \$3.45 to ship a barrel of flour from NY to Chicago
  - ▶ 1890 it costs .68 cents
- ▶ New jobs – Irish/Chinese
- ▶ Westward Expansion – Safer/Quicker/Cheaper
- ▶ Native American wars and removal

# Eminent Domain

- ▶ What happened to the land or property people if a railroad was designed to go through it?
- ▶ Eminent Domain – 5<sup>th</sup> Amendment
  - ▶ Gov. can take any land as long as it is for the public good
  - ▶ What is the Public Good?
  - ▶ Indian territory decimated

Eminent Domain still a part of our lives today

Private property vs. Public Use – airport runways, parks, highways, shopping centers etc.

The Government – federal, state, and local can take what it wants

New buildings and structures create increased tax revenue –  
Newport, KY

Blighted areas become economic goldmines