

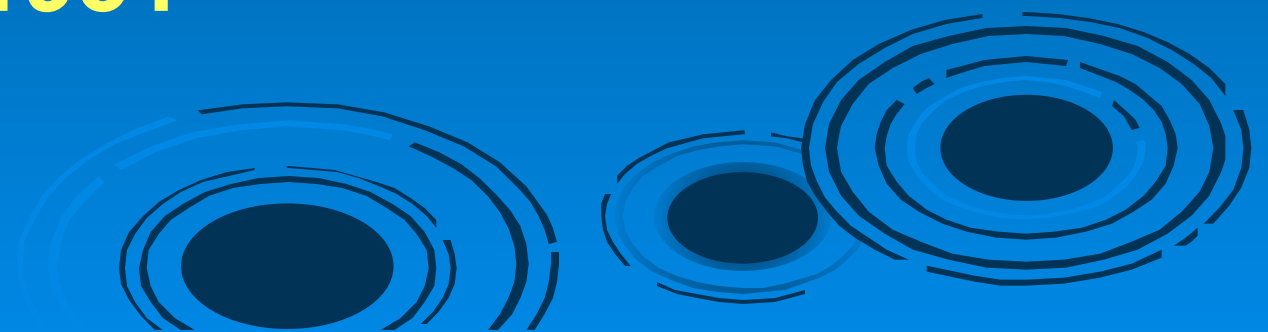


*History of Bayou Vista
...the First 150 Years*

➤ Ed Saconas

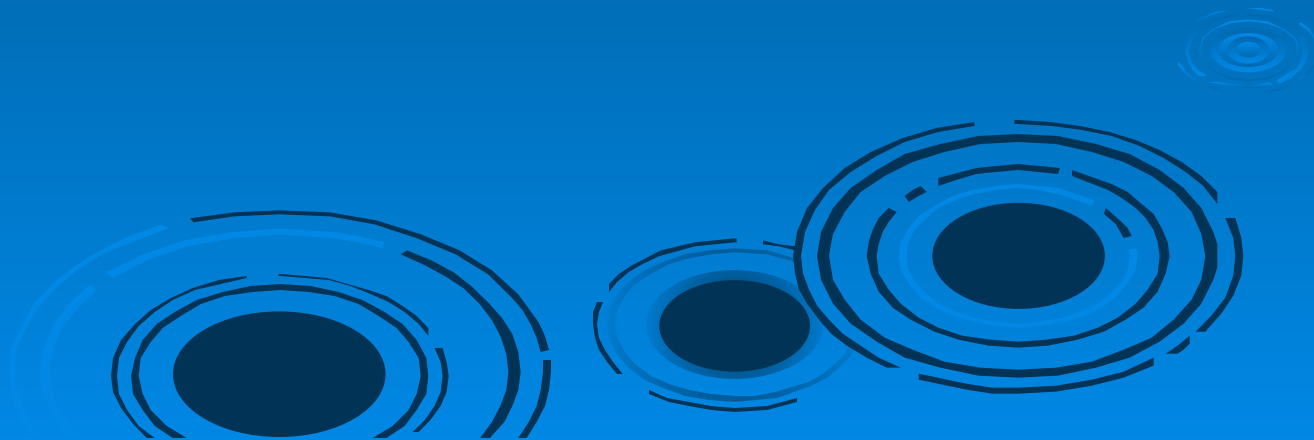
**“A page of history is worth
a volume of logic.”**

**Oliver Wendell Holmes, Jr.
U.S. Supreme Court Justice from
1902 to 1931**



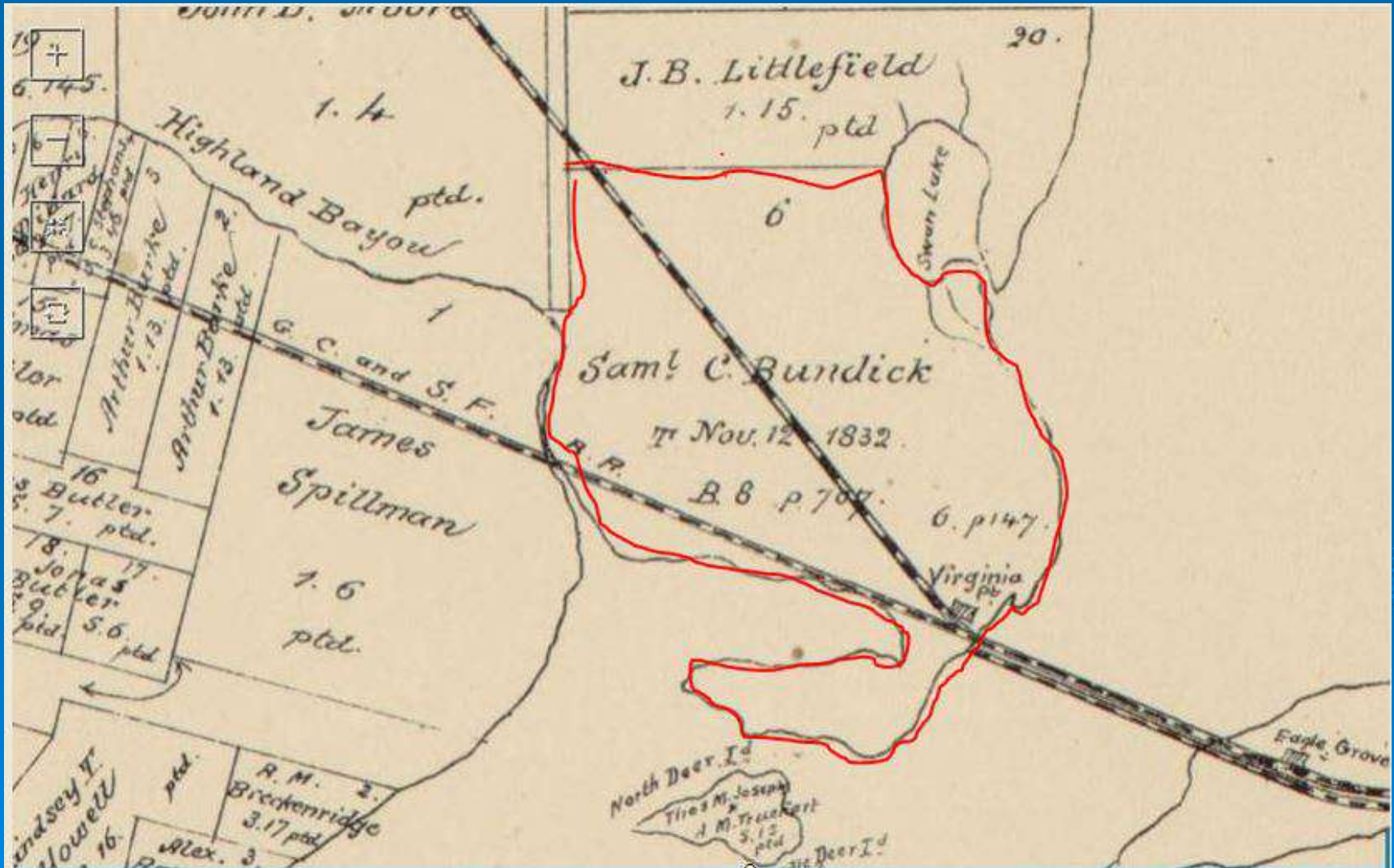
Title History

**From Spanish Grant (1832)
to early 1950's**

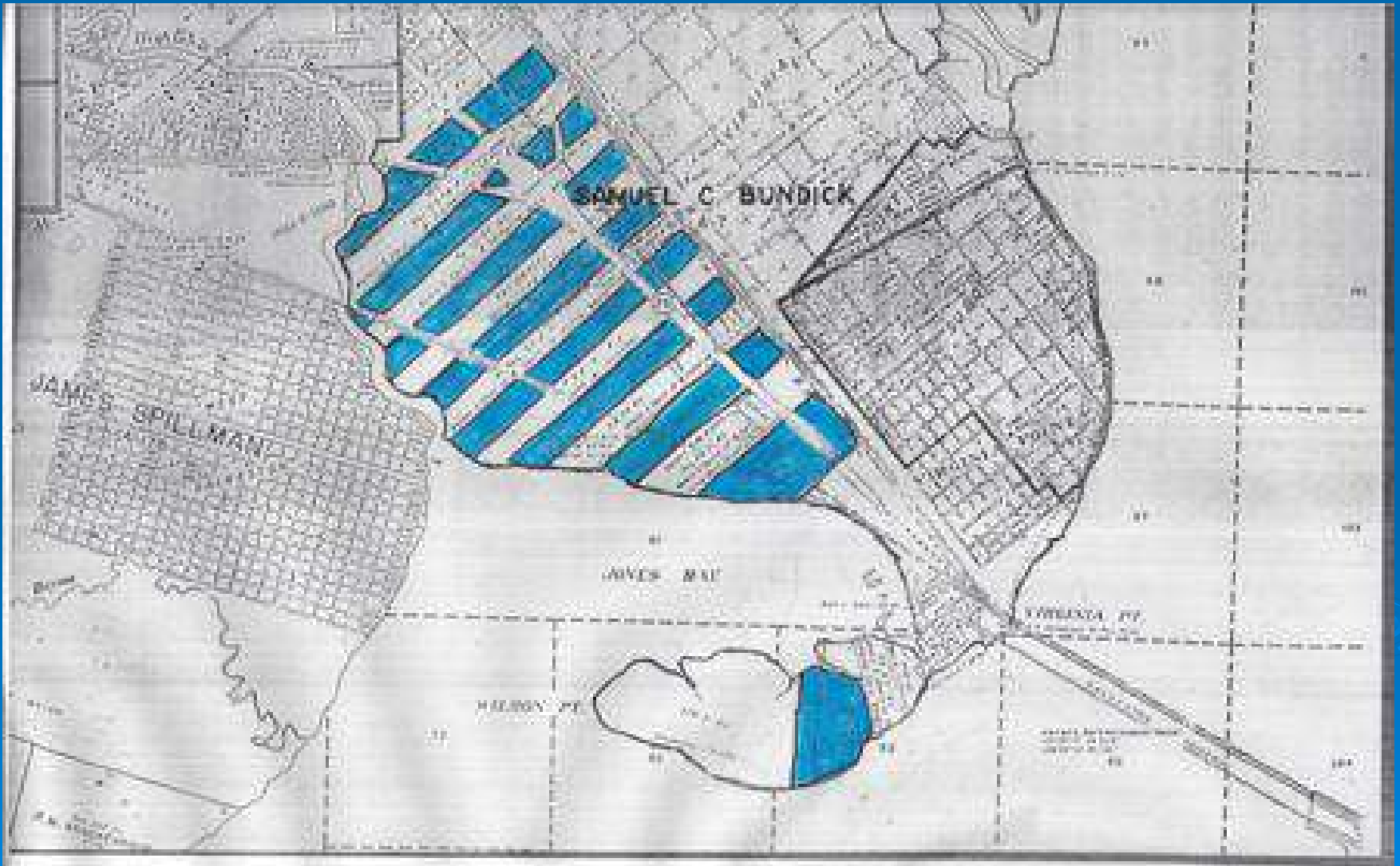


1832 S.C. Bundick League

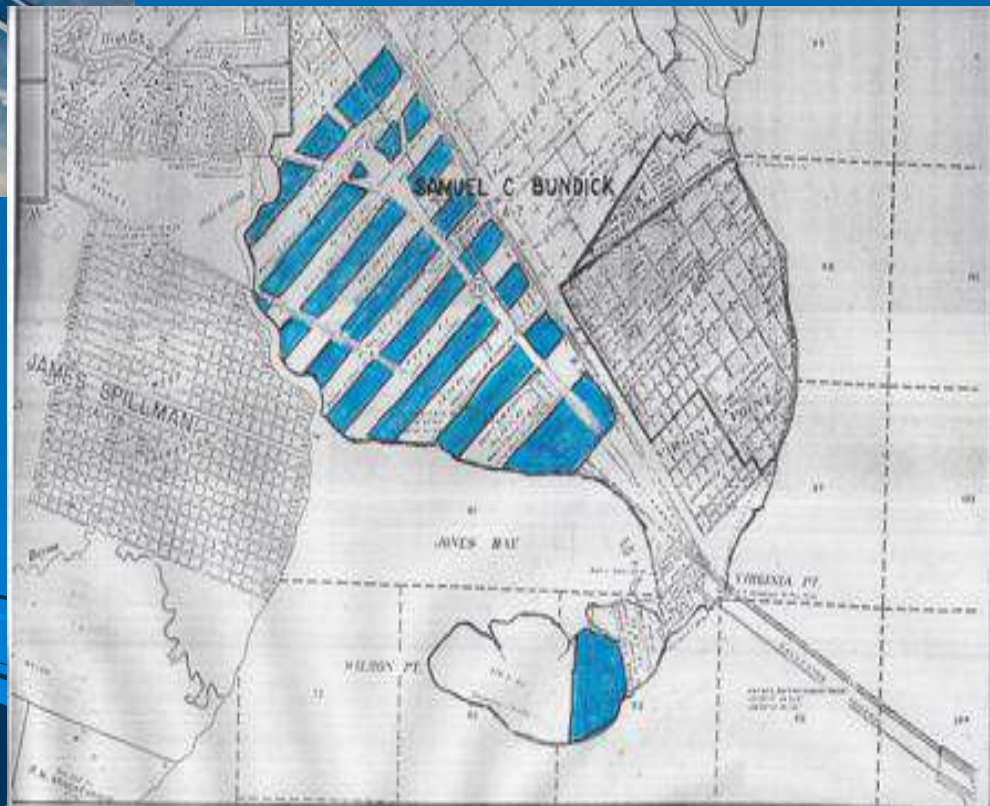
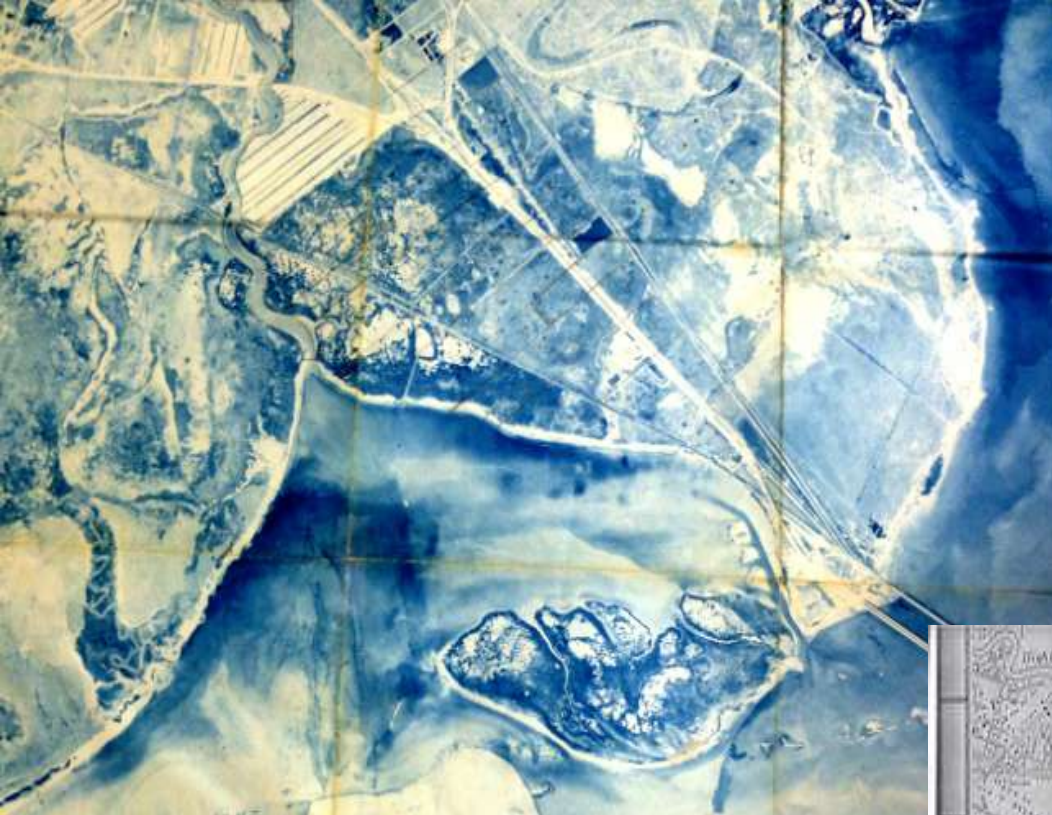
A League = 4,428.4 acres



Partitioned Land







How the Saconas' became interested in expanding their Texas land ownership

1. Florida trip and canal development.
2. Oil Well in Bundick League.
3. Land considered almost worthless.



George & Louise Saconas



1950'S Bundick League land acquisition.

Gathering up the pieces

1. Scattered ownership
2. Separated tracts
3. Undivided Interest
4. Hurricane risk



1953

Texas First Canal Development “fishing camp” lots & homes

5ft deep canals

Oak piers and bulkheads

Creosoted foundation pilings

Low lying bridges across waterways

Shell roads

Well water

Private roads

Septic tanks

Metes & Bounds

1954 Ad in "Galveston Daily News"

DE LUXE CAMPSITES

at Bayou Vista on Highland Bayou. Electricity, running water. All lots are graded and filled and all have water frontage. Restrictions and private roads. Investigate. Apply on the site or at

KELLNER, AYERS, & SCHMITT

Realtors

Ph 5-7439

2307 Mechanic

“Fish Camp” built over 60 years ago



#15
Edgewater

Another “Fish Camp” sold for \$5500 in 1954



#14
Edgewater

Saconas' Home



**#1
Highland
Drive**

House raised after Hurricane Carla

1958



“Original” Bayou Vista 123 lots

1958



View towards Jones Lake



1960'S Bayou Vista Dr.



Major Hurricane Risk 1900 thru 1961



Sept. 8th 1900 “Great Galveston Hurricane”

Category 4 storm 145 miles per hour.

Leaving about 8,000 dead.

It was the deadliest hurricane in US history.

Near the Texas City Dike

1900 “Great Galveston Hurricane”



The only remaining house near the beach for miles, Galveston

Aug 7th 1915 Hurricane



Category 4
hurricane made
landfall southwest
of Galveston.
135 mph winds

Destroyed causeway from arched bridge to
mainland

1915 Hurricane



Wreckage of Inter urban tracks at Virginia Point



1915 Storm



August 16

1900 Storm



September 8



Carla



September 11, 1961

Sept 11th 1961 Hurricane "Carla"



Category 4
145 mph winds

Galveston Texas

Decision Time: Fold or Raise?

Pro's

1. Survived Hurricane CARLA
2. Clay soil was a huge advantage
3. Excellent freeway window
4. Location
5. Successful project already completed

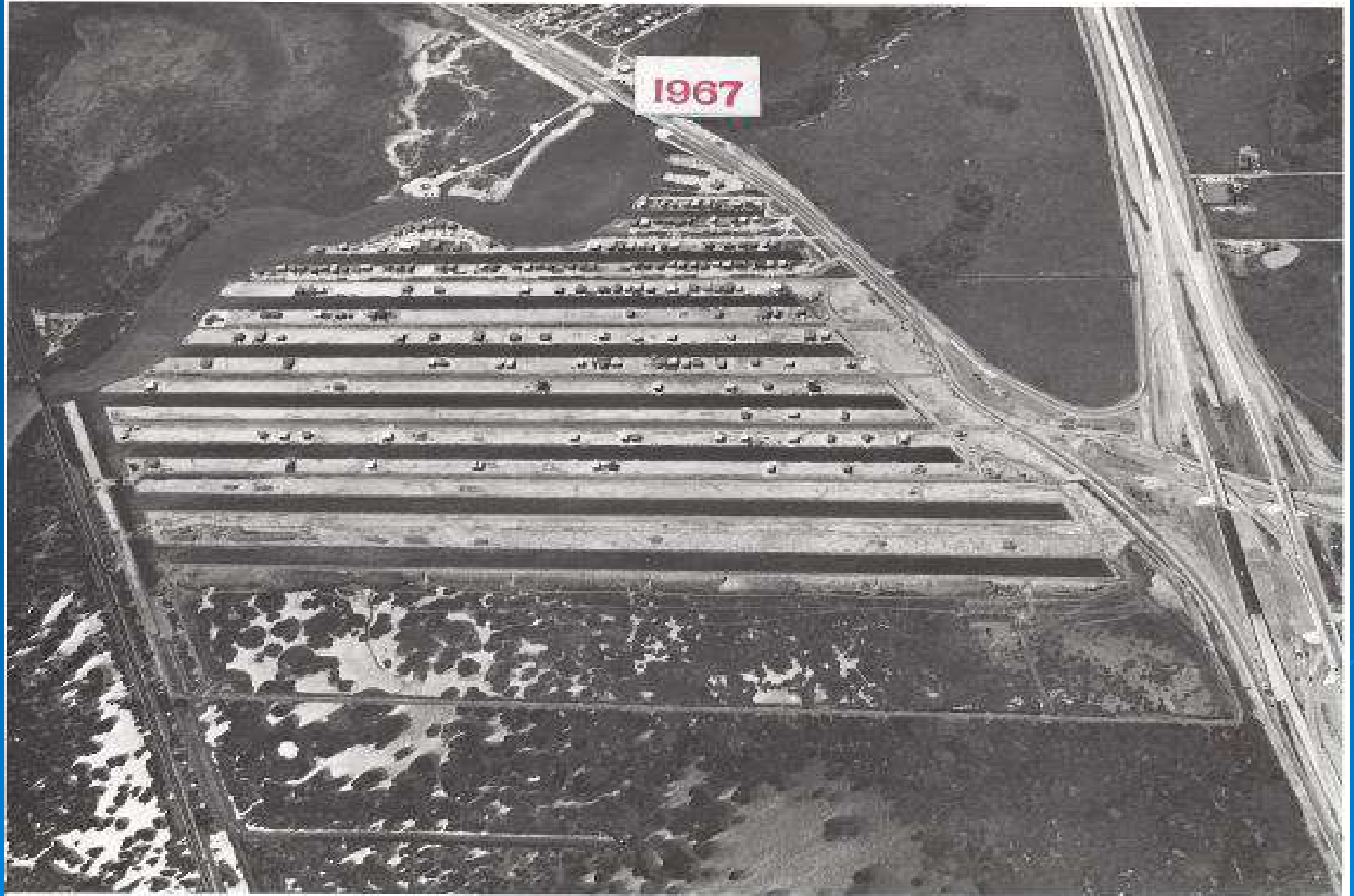
Con's

1. Didn't own adjacent land
2. Not enough money
3. No reliable financing
4. Low bridges

ALL IN!!!!

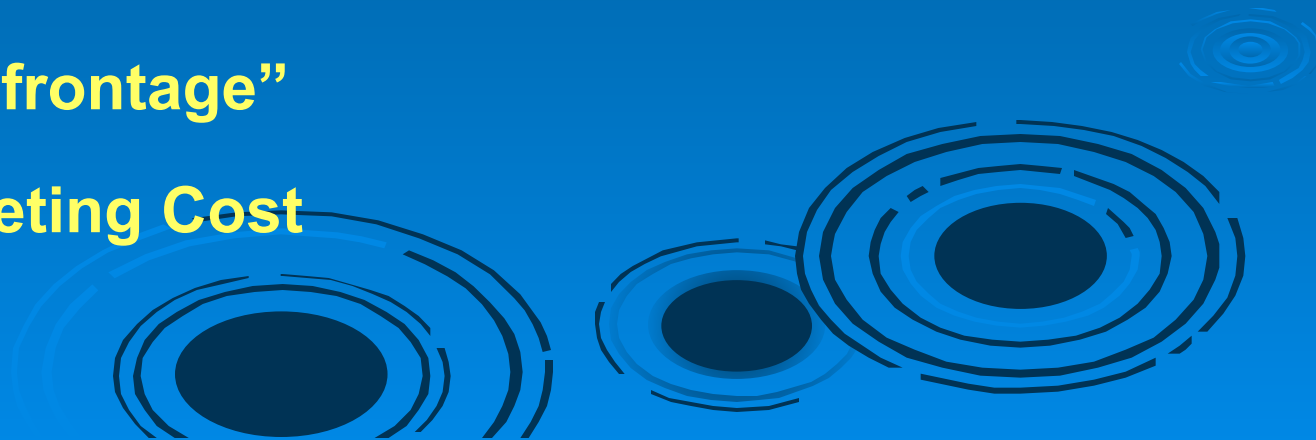


Canals under construction



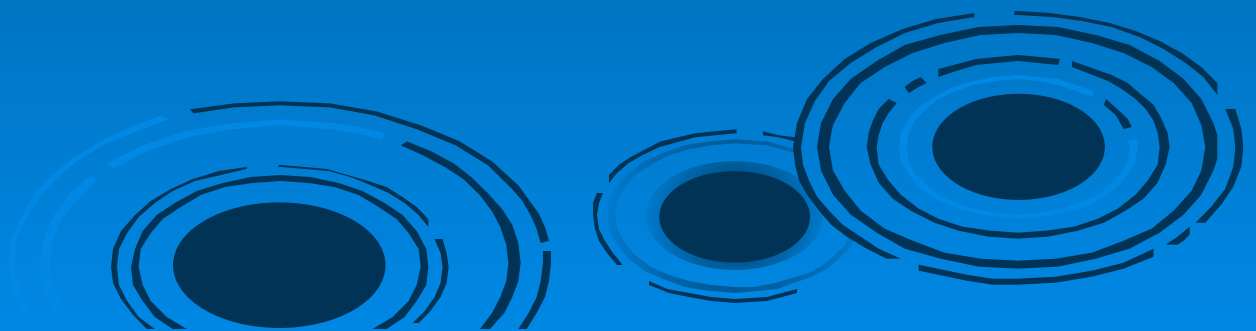
Cost Advantages

1. Low land Costs.
2. Clay soil.
 - a. foundations
 - b. canal banks
 - c. canal slope
 - d. good road base
3. Cheap dirt movement
4. No middlemen
5. Proximity to Houston
6. Freeway “frontage”
7. Low Marketing Cost



LOW BUDGET MARKETING

**Our best Marketing
Resources have been the
Home Owners themselves**



JANUARY 1969

NAHB JOURNAL OF Homebuilding

THE MAGAZINE FOR THE PROFESSIONAL BUILDER



Seeing What's Selling in Houston
also
NAHB Convention - Exposition at a Glance

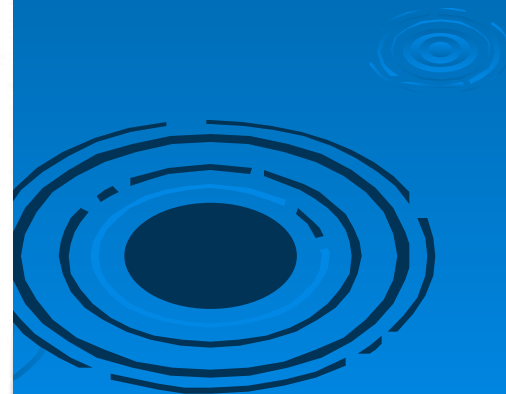
1965 Amphi-Car



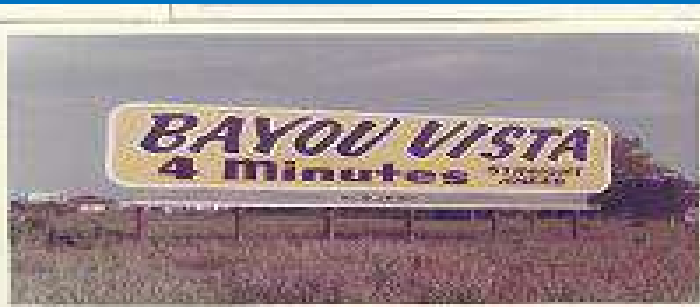
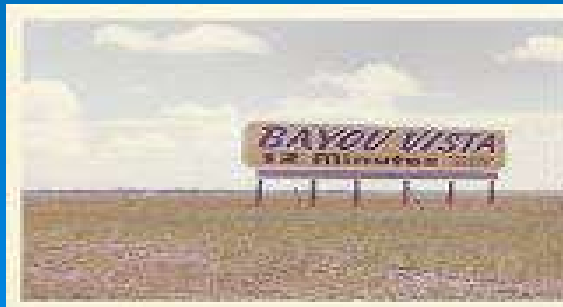
BV Signs 1963 thru 1983 Sailfish Dr.



1965-1983



BV Signs 1963



1960's New Bayou Vista



New Bayou Vista Development



Utilities development New Bayou Vista



Saconas' New Texas Home



#1 Dolphin Drive built mid 1960's

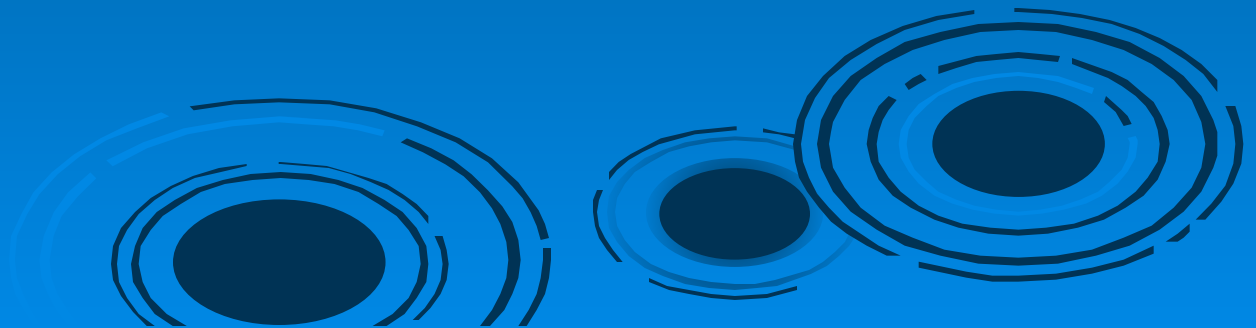
Regulations Kill Wetlands Development --1968 thru Present

1. Permitting now required to:

a. Preserve Wetlands

b. Ensure Non-Potable Water Quality

**2. Very hard to get and requires very
expensive development features**



OMEGA BAY

Why not “Bayou Vista III”?



1976 OMEGA BAY



Aerial photos taken in August and December of 1975 show the tract and ground being prepared for Omega Bay. The new development is bordered by Interstate Highway 45 below and State Highway 6 above with Highland Bayou on the right. By December most of the channels had been dug and bulkheaded. A temporary road bisecting the channels will become the main access channel for Omega Bay with the circulation canal adjacent to Interstate 45.

OMEGA BAY IS ON ITS WAY

“OMEGA BAY” Dam Busting



Sept 5th 1976 Dam Busting







Bridge Raising Efforts

Highland Bayou flood drainage project—
Help is on the way.

The Calvary gets lost.

SURPRISESURPRISE!!!!



Hwy. 6 Bridges



Railroad Bridge

VOLUME 1 NO. 3

December 1971



ONE UP.....

The Texas Highway Department is well on it's way to completing the raising of it's bridge crossing State Highway 6, just north of Bayou Vista.

The bridge raising, which should be completed in the spring of 1972 will open considerable additional fishing and water ski areas to the boaters of Bayou Vista. The new bridge will have a vertical clearance of 13 feet above mean sea level, allowing the safe and easy passage of considerably larger boats.

The bridge raising represents the Texas Highway Department's portion of a Galveston County sponsored U.S. Army Corps of Engineers program to raise bridges across Highland Bayou and to dredge a deep water channel to the Intera-coastal Canal. The current plans of the county are to combine the bridge raising program with the federally approved Highland Bayou Flood Control Project which will widen Highland Bayou and according to the Interim Survey Report on the project, give the bayou a minimum 10 foot water depth and a 300 foot width in the Bayou Vista area.

Raising the highway bridge is a giant step forward in the long awaited dream of nearly all Bayou Vistans to more fully enjoy one of the most ideal recreational waterways on the Texas Gulf Coast.



.....AND ONE TO GO

On November 2, 1971, the voters of Galveston County approved by a more than 3 to 1 majority a bond issue to finance several federal projects which when completed will greatly enhance water enjoyment and property values in New Bayou Vista.

Of most interest to Bayou Vistans was the approval of issuing seven hundred thousand dollars in bonds as the County's portion of a project to raise two railroad bridges crossing Highland Bayou.

The Santa Fe Railroad bridge crossing Highland Bayou lies between Bayou Vista and the open water of West Bay. To date the bridge has limited the size of boats from Bayou Vista which could get into West Bay and the Gulf. The raising of the bridge will allow considerably larger boats to come into Bayou Vista, and thereby eliminate an obstacle which Bayou Vistans have lived with for years.

The bond issue also provided necessary funds for the Highland Bayou flood drainage project which will widen and deepen Highland Bayou. The first contract on the Highland Bayou flood drainage project is expected to be let in 1972.

The support of Bayou Vistans for the bond issue in the form of votes, contributions to the Bond Election Committee, and work in promoting the election was a decisive factor in the election victory.

Raising of the AT&SF Railroad Bridge



The Texas Depression

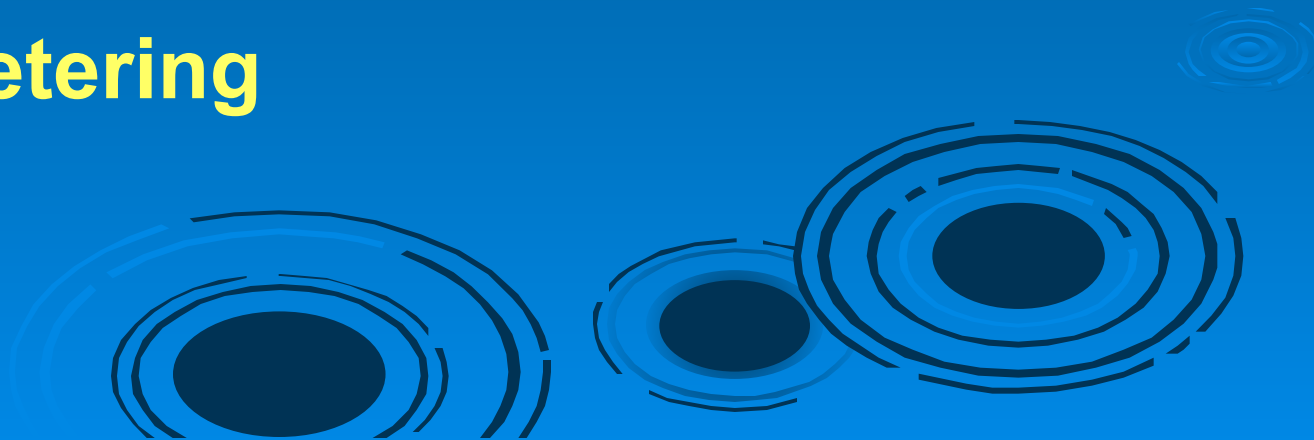
Mid 80's thru 90's

Oil Bust

Agricultural Bust

Savings and Loans Bust

Banks Teetering



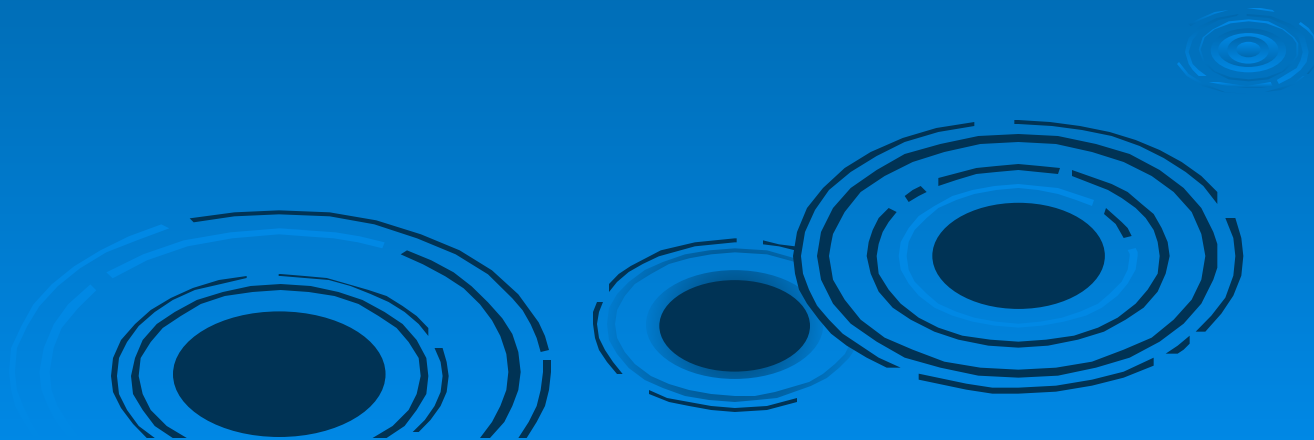
POLITICAL INDEPENDENCE

Hard to Achieve

MUD 12- June, 1983

City Incorporation- January, 1985

Homeowners Association Transfer- 1985



Clubs & Events in Bayou Vista over the years

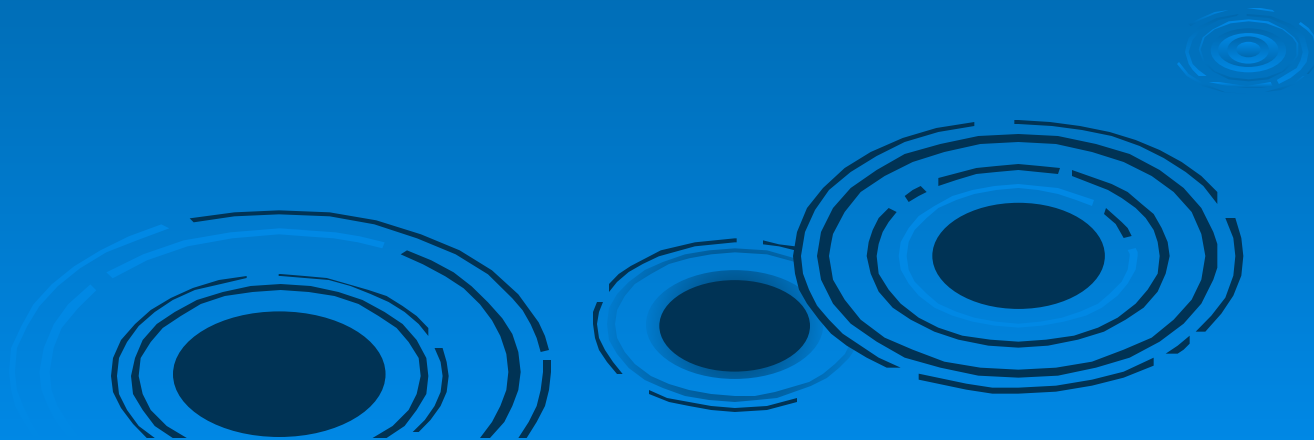
Clubs

Bingo
Bridge
CB Club
Ex-Com's
Exercise Club
Fire Aux. Club
Hobby Club
Leisure Group
Poker Club
Third Friday Dinner Club
Saltwater Garden Club

Community Events

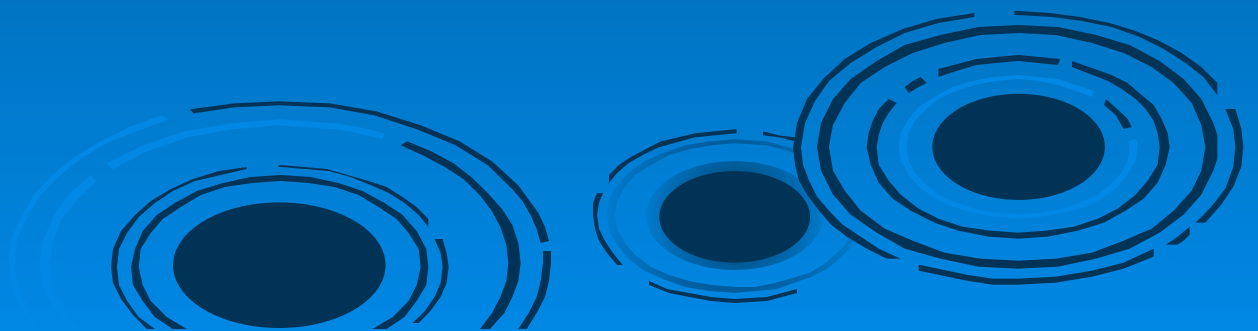
BBQ Cook offs
Gumbo Cook offs
Chili Cook Offs
Parades
Fishing Contests
Concerts
& Many Others

UNSUNG HEROES



SOURCES

1. **WIKIPEDIA**
2. **City-data.com/Bayou- Vista-Texas**
3. **Bayou Vista Development CO. records**
4. **Bayou Vista Beacon**
5. **Bayou Vista/ Omega Bay Beacon**
6. **Vista Views**
7. **Texas Library of Congress**
8. **Galveston County Clerk Deed Records**
9. **Galveston Daily News Archives**
10. **Current and Previous Residents**



Credits

Saltwater Garden Club

Residents of Bayou Vista & Omega Bay

Bayou Vista Police Department

City of Bayou Vista and Mud 12 Employees

Jewels Bridges

Carla Walker

Kelly Vernon

