



History of Mountain State Forest Festival

- **Originated in 1930 as an Elkins Homecoming celebration**
- **Dedicated to preserve and conserve WV's natural resources**
- **Annually attracts around 125,000 visitors**
- **A "Forest Festival" was planned because of the beauty surrounding the fall season**

History of Mountain State Forest Festival

- **Mr. George Dornblazer was chosen 1st Director General**
- **Newly formed “Elkins City Band” lead the Grand Feature parade**
 - **Queen Silvia I – Margaret Straley**
- **Annual event – except – 1942-1948 during World War II**
- **The name Silvia/Sylvia was chosen because the Latin word sylvia means “of the forest”**

Kid's Day at the Festival

- These online informational tools, activities and events were created to assist with your overall experience during “Kid’s Day at the Festival”.
- We hope you find the activities and information entertaining and informative.

We also hope you get pleasure from the activities and experiences you will take part in during the Mountain State Forest Festival.

These are a few of the presentations and demonstrations you will see throughout your “Day at the Festival.” Have fun!

FESTIVAL 101:

While visiting the Coronation Stage, learn about the history and origin of the Mountain State Forest Festival. Also visit the Jousting ring of the Knights of the South Branch Valley.

Be sure to return on Saturday morning to enjoy the Lumberjack Competitions including Axe Throwing, Crosscut Sawing competitors, Tree Felling, and Wood Chopping on the grounds of Davis and Elkins College.

Magic in the mountains

The theme for the 76th festival is “Magic in the Mountains” created by Karlen. “I chose this theme because I have always loved Walt Disney World and the true magic you experience while attending any of the Walt Disney theme parks,” said Karlen. “I want to make the 76th Mountain State Forest Festival a true magical experience for all those attending our ‘Magic Kingdom’. We have a Queen and her Royal Court, we have parades and carnival rides along with many other magical events. No matter what time of year you visit beautiful Randolph County, you can experience a touch of magic from these hills. I look forward to rolling out the magic carpet for all to enjoy a splendid magical week at the 76th Mountain State Forest Festival.”



Kid's Day at the Festival

FOREST FESTIVAL 101

<http://www.forestfestival.com/>

Mountain State Forest Festival Information

'MAGIC in the MOUNTAINS'

<http://www.kidzone.ws/magic>

KidZone Magic Tricks

Science and Math Magic Tricks for Kids

[☞ Cups & Balls](#)

[☞ Pick an Item](#)

[☞ Card Stab](#)

[☞ Liquid Magazine](#)

Dinner Table Magic

[☞ Pepper Prestidigitation](#)

[☞ Fingerzzz](#)

[☞ Anti Gravity Ketchup](#)

[☞ Mathemagic](#)

Kid's Day at the Festival

BLACKSMITH BY JERRY ALLEN

"Wizard's Forge":

Jerry Allen has been giving blacksmith demonstrations during the Mountain State Forest Festival since 1991. When he began his demonstrations in 1991, he was the only person in the park. Over the coming years the number of presenters grew. In the past, Mr. Allen made wood shingles selling them to park attendees.

Blacksmith "Wizard's Forge"

Unscramble each of the clue words. Copy the letters in the numbered squares at the top to the square at bottom with the same number to discover a hidden message.

VILNA
27

SONTG
16 6

GLE VEIS
22 14

FEGRO RAEHHT
10 35

NOGRIGF
23 32

WELSLOB
17

NIKELRC
4 30 5 20

KOERP NAD RAEK
3

RALCAHCO KEOC
12 29 2

SEDLEG RAHMEM
34 21 7

LAENAN
15

NEPRETGIM
26 8

GULRYTEMLA
9 31

LAYLO
25

LUFX
38

WELDGNI
36 33 18

LEDSOR
11 24

TIVRE
13 37 19

NZGARBI
1 28



1 2 3 4 5 6 7 8 9 10 11

31 32 33

12 13 14 15 16 17

34 35 36 37 38

18 19 20 21 22

23 24 25 26

27 28 29 30

Kid's Day at the Festival

CANAAN VALLEY CONSERVATION VILLAGE:

Canaan Valley National Wildlife Refuge Conservation Village working with private partners, the Forest Service, and the Fish and Wildlife Service to promote the land conservation and ecological diversity in West Virginia. Investigate Soil exploration and West Virginia Division of Natural Resources exhibits and presentations.

OLGEBAY RESORT'S ZOO-to-YOU – BARNYARD PETTING ZOO:

Enjoy the opportunity to see creatures of all size including hissing cockroaches and chinchillas. Visit the barn filled with friendly domestic animals such as llamas, pigs, and donkeys.

Canaan Valley Conservation Math



1. The wide diversity of wildlife habitats supports 9 species of reptiles, 5 times more species of mammals, 3 times more species of fish, 2 times more species of amphibians, and 19 times more species of birds. How many mammals, fish, amphibians, and birds are found at the Canaan Valley National Wildlife Refuge?



2. The Canaan Valley National Wildlife Refuge opened designated trails in 2003, 31 miles for pedestrian use, 23 miles for bicycle use, 22 miles for horseback use and 7 miles of roads for licensed vehicles to provide public access for wildlife observation, photography, fishing and learning about nature. Use this information to create any graph you choose. Then use your graph to answer the following questions. What is the range, mean, median, and mode of these trails?

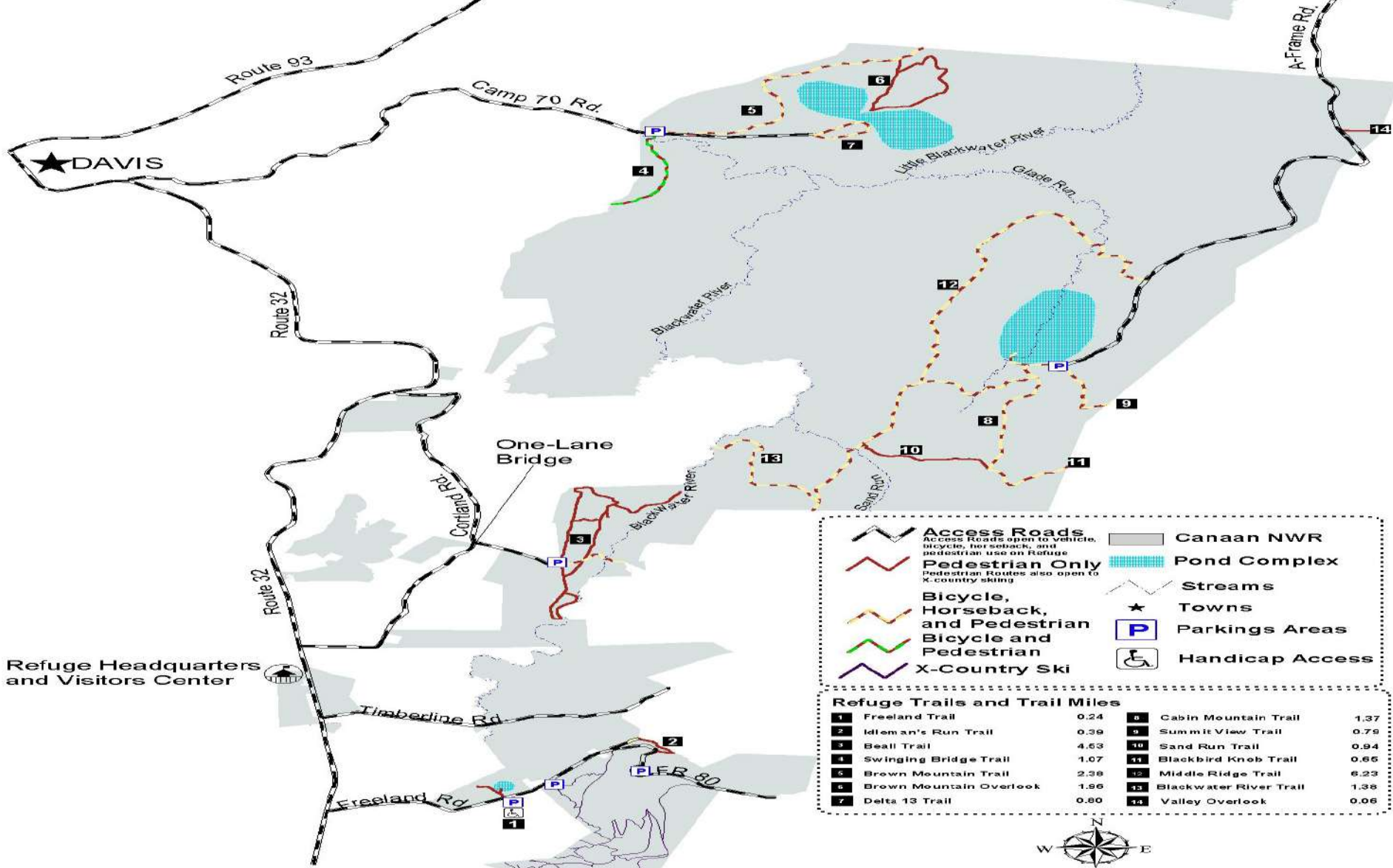


3. Use the Canaan Valley National Wildlife Refuge Trail System Trail Mile Guide included with this packet to calculate the total number of miles available for travel at the Wildlife Refuge.





Canaan Valley National Wildlife Refuge Trail System



	Access Roads Access Roads open to vehicle, bicycle, hor seback, and pedestrian use on Refuge		Canaan NWR
	Pedestrian Only Pedestrian Routes also open to X-country skiing		Pond Complex
	Bicycle, Horseback, and Pedestrian		Streams
	Bicycle and Pedestrian		Towns
	X-Country Ski		Parkings Areas
			Handicap Access

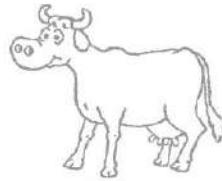
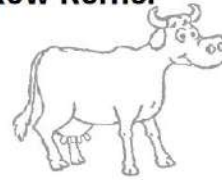
Refuge Trails and Trail Miles					
1	Freeland Trail	0.24	8	Cabin Mountain Trail	1.37
2	Idleman's Run Trail	0.39	9	Summit View Trail	0.79
3	Beall Trail	4.63	10	Sand Run Trail	0.94
4	Swinging Bridge Trail	1.07	11	Blackbird Knob Trail	0.66
5	Brown Mountain Trail	2.38	12	Middle Ridge Trail	6.23
6	Brown Mountain Overlook	1.96	13	Blackwater River Trail	1.38
7	Delta 13 Trail	0.80	14	Valley Overlook	0.06





Barnyard Fun

Kow Korner



List 10 words that rhyme with **moo**!

1. _____
2. _____
3. _____
4. _____
5. _____
6. _____
7. _____
8. _____
9. _____
10. _____

Using the following terms, pick out which babies go with which moms and dads and match them up in the table below: (Hint: Several have more than one answer. PLUS, we've thrown in some extras for excitement!)

calf	bull	ewe	gilt	ram	cock
rooster	chick	whelp	poult	lamb	heifer
foal	shoat	pullet	sow	joey	
dam	buck	piglet	cow	mare	
tom	kid	lambkin	boar	hen	

	Male	Female	Young
Cattle			
Swine			
Sheep			
Chickens			
Turkeys			

The Hen House

Fill in the Blanks—

- _____ chickens (What old people aren't)
- _____ weather (Stinkin' weather)
- chicken ____ (Rhymes with "rocks")
- chicken _____ (Where chickens live)
- _____ wings (Great with hot sauce)
- chicken _____ (Good for a cold)
- Chicken _____ (The sky is falling!)
- _____ (Last one finished is a)



The Sheep Shed

Some people confuse sheep and goats. Name three easy ways to tell the difference—

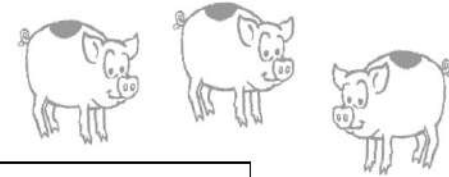
BAA!!
BAA!!

Sheep have _____; goats have hair.
Sheep say _____; goats say "maa."
Sheep are _____; goats are browsers.

MAA!!
MAA!!

The Piggery

Unscramble the following:



Clues	
I-T-I-S-L-P-G-A	Boys love to pull them
H-I-N-S-C-I-L-T	The small intestines of pigs— popular in southern cooking
K-C-Y-P-B-G-I-A-G	Hop up for a ride
S-A-H-W-G-O-H	Garbage fed to hogs; ridiculous
S-G-I-P-I-N-K	A football
G-I-Y-G-P-N-A-K-B	Investing in the future
A-C-N-O-B	Great in BLT's
O-Y-P-R-K	The world's looniest pig
D-E-D-G-I-E-P-H-A	Stubborn
G-H-I-E-O-T	To bind the legs together



Kid's Day at the Festival

WV TREE GROWERS ASSOCIATION AND WOOD PRODUCTS EXHIBIT

The Elkins VFW houses the Forestry and Wood Products Exhibit. One display includes live specimens of invasive species that can be found in the West Virginia forest. The VFW also houses Christmas trees from the West Virginia Christmas Trees Growers Association.

CHAINSAW CARVINGS BY ANDY KERNS:

Chainsaw Carver Andy Kerns is also on hand in the park making his unique wooden creations including the West Virginia University's "Flying WV" symbol. Kerns carvings are for sale throughout the week with an auction held at the conclusion of Forest Festival week on Saturday evening.

Tree Species Scramble

Unscramble each of the following sets of letters to make a species of Christmas Tree.

1. HSOCTC NEIP _____

2. RSRFAE RFI _____

3. YLDELNA PCESYRS _____

4. LAVGRIIN EPNI _____

5. SMABLA IRF _____

6. BNLOE FRI _____

7. OCLODAOR UBEL UESRPC _____

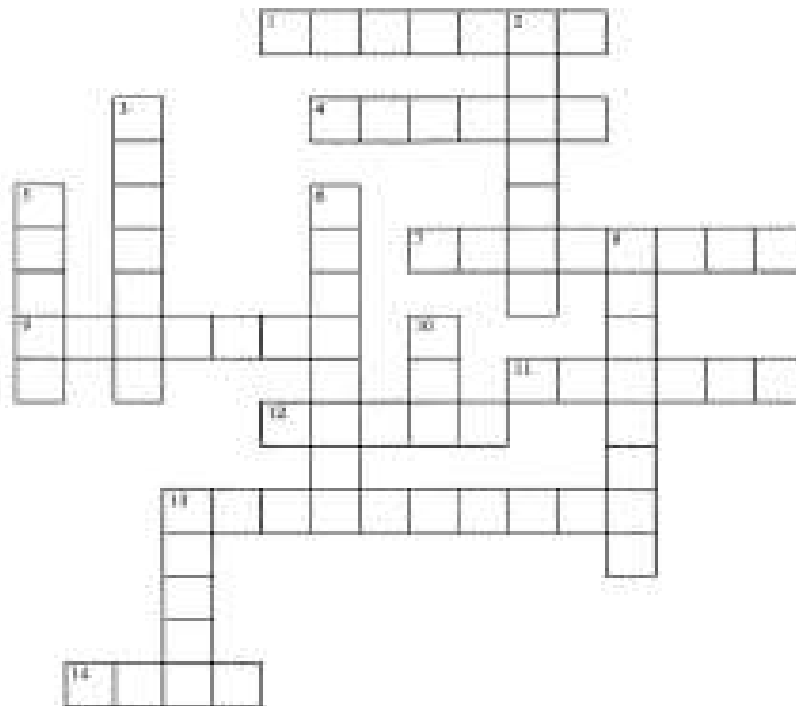
8. LUDASOG IFR _____

9. YNRAOW RPSUEC _____

10. ZIRANOA YESPSCR

(HINT: visit www.christmastree.org/types.cfm for additional help)

The Science of Christmas Trees



ACROSS

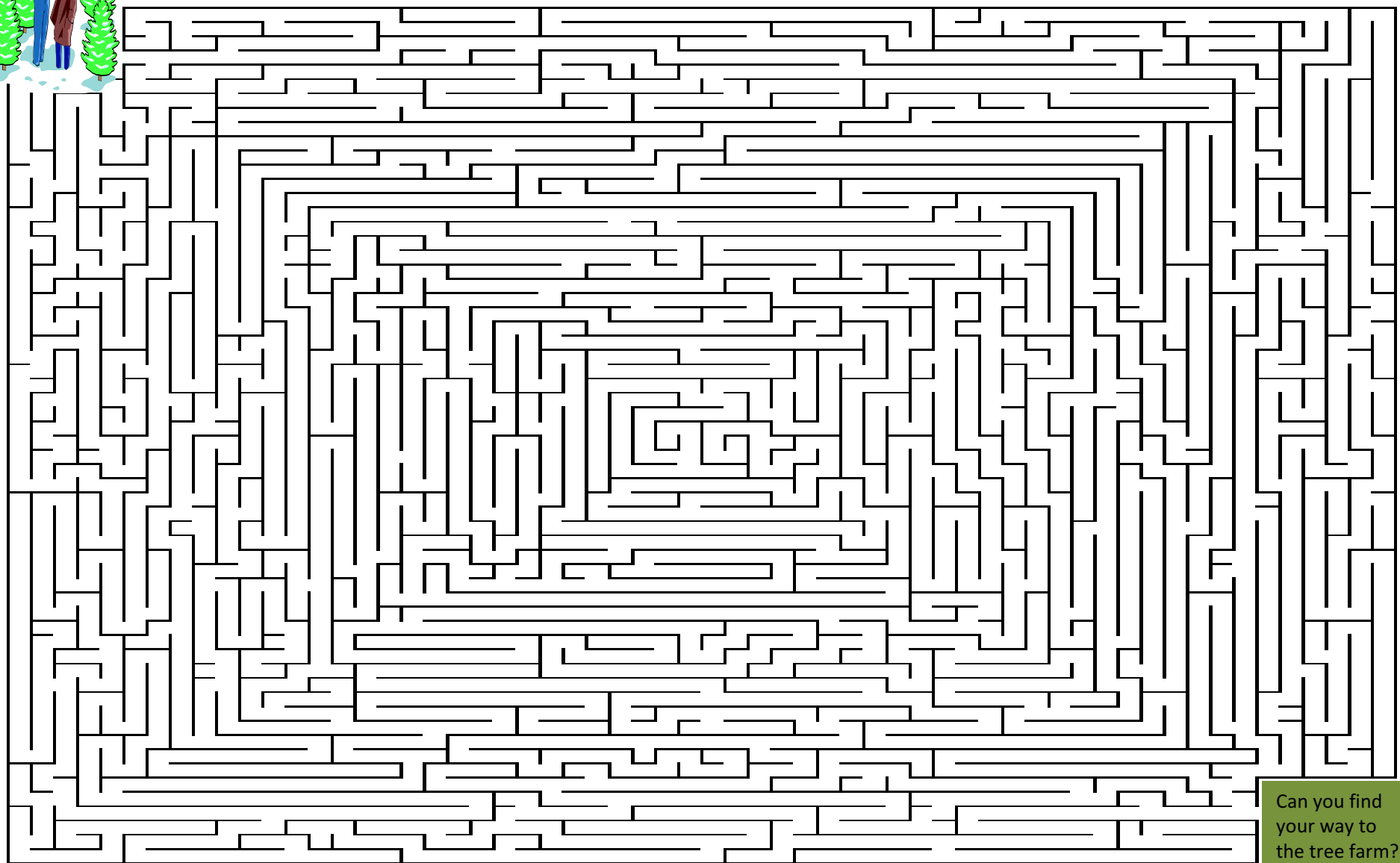
- 1 A young tree
- 4 Christmas Trees are grown in all 50 _____.
- 7 Trimming a tree so it is the correct shape.
- 9 Because of its cone-shaped fruit, a Christmas Tree is also called a _____.
- 11 Trees produce _____ for people to breathe.
- 12 Christmas Trees take 4 to 10 _____ to grow to maturity.
- 13 A tree is donated each year to the First Lady for display at the _____.
- 14 Place where Christmas Trees are grown

DOWN

- 2 Long, thin leaves of an evergreen tree
- 3 Trimming the top of a tree to control its growth
- 5 Recycled trees can be ground into _____.
- 6 A substance necessary for a plant or animal to grow
- 8 After the holidays, Christmas Trees can be _____.
- 10 A type of Christmas Tree: Fraser _____.
- 13 Be sure to fill your Christmas Tree stand with this

(HINT: visit www.christmastree.org/types.cfm for additional help)

Wood and Forestry Maze



Can you find
your way to
the tree farm?

Kid's Day at the Festival

GLASS MAKING AND GLASS BLOWING BY APPALACHIAN GLASS PRODUCTS:

With its mission to keep the tradition of handmade glass and other dying arts alive in West Virginia, Chip Turner maintains a large portable glass furnace to take to craft shows and festivals. Appreciate the skill and chemistry of soda-lime crystal products created through glass blowing and crafting demonstrations. Appalachian Glass specializes in creating “Friendship Balls and Witch’s Balls.” Additional products can be seen and purchased at the Appalachian Glass plant located in Weston.



[Click Here](#)

Kid's Day at the Festival

PRIMITIVE CAMPGROUND EXHIBIT:

The lower lawn of the Davis & Elkins College campus once again welcomes the Primitive Campground exhibit. Various campsites are set up to show visitors how people once lived.

The family was the essential work unit during early settlements. The wife and daughters took care of food preparations, from churning butter to making candles and soap. The husbands raised crops or worked a trade and maintained the family's property. The sons looked after the livestock, hunted, and fished. Even small children contributed to the family's welfare, gathering berries and spinning thread.

Name _____



How the Colonists Traveled

By Sharon Fabian

The early colonists didn't travel much, not nearly as much as we do now. Their everyday trips were short. They didn't travel far for work. They didn't visit distant friends often. They didn't take vacations either.



When they needed supplies, colonists who lived in town walked. The towns were small, so it was a short walk to the store. Some colonists lived further out. When they needed to go into town, they hitched up a wagon. Horses pulled the wagon. The family rode into town. They bought supplies and loaded their wagon. Their horses pulled the wagon home.

Settlers didn't commute to work. Some lived and worked in town. They could walk to work. Many worked on their own farm.

Sometimes, the men needed to do business in another town. The best way for one man to travel was on horseback. This was the fastest way. Messengers traveled on horseback too. Postriders carried mail on horseback.

Sometimes settlers visited a neighboring farm. If it was a few miles away, they might walk. One or two people might go on horseback. A family might go in their farm wagon. In winter, they might hitch up their horses to a family-size sled.

Visits to far-away towns were rare at first. Later on, stagecoaches carried people from place to place. With stagecoaches, more people could travel. They could travel further too. But, it was not a comfortable ride. A stagecoach had hard wooden benches. It had no springs, so the ride was bumpy. The roads had ruts, rocks, and tree stumps. The stagecoach bounced over every one. When it got stuck, the passengers had to get out and help.

Horseback was not the only way to travel fast. There was one other way. That was by water. The rivers were the best and smoothest routes to travel. Many towns had grown up along a river. Settlers could travel from town to town by canoe.

Settlers could travel across a river by ferry. Ferries were used to carry goods across a river too. Towns on both sides of a river could trade using the ferry.

When goods needed to be moved over land, pack animals did the job. Pack horses and mules carried supplies. Farm wagons and two-wheeled carts carried bigger loads. Strong animals pulled these wagons and carts too. A team of oxen could pull a heavy load.

Sometimes a longer trip was planned. Maybe an explorer was going to see new places. Maybe a family was going to settle on new land. These travelers were going into unknown territory.

Some of them chose to travel on foot. They followed trails. They took a Native American guide to show the way.

A large group might have loaded up a Conestoga Wagon. This was a big wagon. It could hold all of a family's belongings. It was covered too. That gave some protection from the weather.

Travelers had to be ready for anything. If a horse went lame, they had to take care of it. If a wagon lost a wheel, they had to fix it. If they got lost, they had to find their own way back. Traveling was not easy in colonial days.

How the Colonists Traveled

Questions

- _____ 1. Colonists traveled by _____.
- A. foot
 - B. horseback
 - C. wagon
 - D. all of the above

Kid's Day at the Festival

MARVELOUS MUTTS:

Marvelous Mutts is a dog sport entertainment show that showcases some of the world's finest canine athletes. Shows may consist of Dock diving dogs, world-class Frisbee Dogs, Obstacle courses or combination events. Most Marvelous Mutts have been adopted from shelters and rescues.

DIVISION BMX:

The Division BMX Team is formed from an elite group of professional BMX riders that have come together with the common desire to promote the sport of BMX and demonstrate stunts filled with tricks and gimmicks to bring attention to the performance. Team riders are World Champions and X-game medalists featured in magazines and on television.

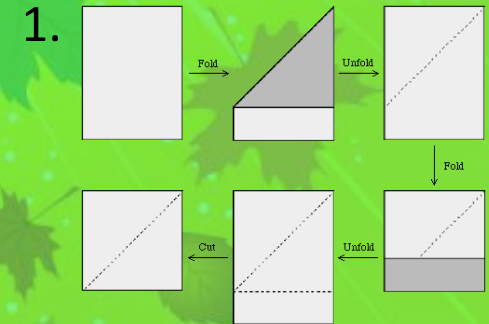
Marvelous Mutts Tangram

Tangram is an ancient Chinese puzzle. This activity is sometimes called "seven pieces of cleverness." The object of the puzzle is to rearrange the pieces of a square (the puzzle pieces) to form figures (like a picture of a dog) using the tangram pieces.

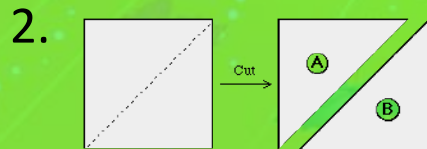
You can make your own set of tangrams from a single piece of paper.

Just follow these simple steps:

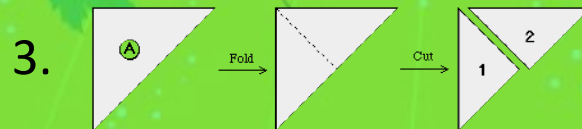
1. Fold a rectangular piece of paper so that a square is formed. Cut off the extra flap.



2. Cut the square into two triangles.



3. Take one triangle and fold it in half. Cut the triangle along the fold into two smaller triangles.

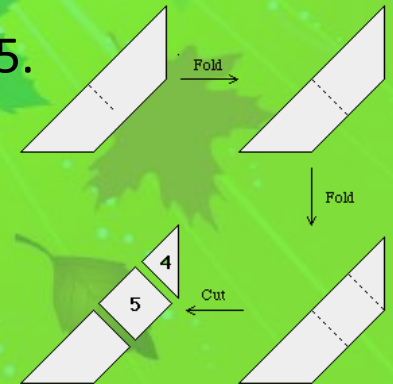


Marvelous Mutts Tangram

4. Take the other triangle and crease it in the middle. Fold the corner of the triangle opposite the crease and cut.



5. Fold the trapezoid in half and fold again. Cut along both folds. 5.



6. Fold the remaining small trapezoid and cut it in two. 6.



7. Use all the Tangram puzzle pieces to form the shape of this dog:

7.



Now, use all the Tangram puzzle pieces to design a shape of your own!

Division BMX



Click for Video

View the video
Complete the Hands-On Math
Activities:

Circle Folding

Rolling Cans

Which Pizza?