

Freshmen Parent Series

Session #3: Calculating GPA & Upperclassmen Advice

Thank you for joining us; the program will begin shortly.

How Weighted And Unweighted GPA Are Calculated



Academic Weighted GPA

It is reported to colleges

Is used to report Quintiles to colleges

Value Points are added in the calculation of the Academic Weighted GPA (those added value points are not shown on the transcript).

The added value pts are as follows:




10 -AP or Advanced Honors

6- Honors

3 - Accel

****If you are unsure about the added value of the course consult the curriculum handbook****

Value 1 = AP, Value 2 = Honors, Value 3 = Accel, Value 4 = CP

Course Name	Course Number	Term	Grade	Credits	Value
Algebra 1 CP	MA24	Year	9	5	4
Algebra 1 Accelerated	MA23	Year	9	5	3
Algebra 1 Honors	MA22	Year	9	5	2
Geometry CP	MG24	Year	10	5	4
Geometry Accelerated	MG23	Year	9, 10	5	3
Geometry Honors	MG22	Year	9, 10	5	2
Algebra 2 CP	MA44	Year	11, 12	5	4
Algebra 2 Accelerated	MA43	Year	10, 11, 12	5	3
Algebra 2 Honors	MA42	Year	10, 11, 12	5	2
Integrated Algebra 2 & Precalculus Honors	MC41	Year	10, 11	10	2
Basic Skills Instruction	RZ11, RZ12	Semester	12	2.5	-
College Transition Math CP	MA52	Year	12	5	4
Pre-Calculus Accelerated	MC43	Year	11, 12	5	3
Pre-Calculus Honors	MC42	Year	11, 12	5	2
Calculus Honors 	MC52	Year	12	5	2
AP Calculus AB	MC60	Year	12	5	1
AP Calculus BC	MC61	Year	12	5	1
Multivariable Calculus	MC62	Year	12	5	1
Probability & Statistics Accelerated 	MP23	Year	11, 12	5	3
Applied Statistics	MP26	Year	12	5	-
AP Statistics 	MS10	Year	11, 12	5	1

 Dual credit available

Class	Grade	Value Pts	Grade + Value Pts	ATTEMPTED Credits	Grade + Value Pts X ATTEMPTED credits	Earned Credit
Algebra 1 CP	83	0	83	5	$83 \times 5 = 415$	5
World History Accel	90	3	93	5	$93 \times 5 = 465$	5
English 1 Honors	85	6	91	5	$91 \times 5 = 455$	5
Biology Honors	79	6	85	6	$85 \times 6 = 510$	6
Latin 1 Honors	51	6	57	5	$57 \times 5 = 285$	0

Add Up Grade + Value Pts x credits and divide by number of credits attempted:

Class	Grade + Value Pts X Potential Credits	Potential Credits
Algebra 1 CP	415	5
World History Accel	465	5
English 1 Honors	455	5
Biology Honors	510	6
Latin 1 Honors	285	5
TOTAL:	2130	26

$$2,130/26 = 81.9$$

Unweighted GPA

Class	Grade	Attempted Credits	GradeXAttempted Credits	Earned Credit
Algebra 1 CP	83	5	$83 \times 5 = 415$	
World History Accel	90	5	$90 \times 5 = 450$	
English 1 Honors	85	5	$85 \times 5 = 425$	
Biology Honors	79	5	$79 \times 5 = 395$	
Latin 1 Honors	51	5	$51 \times 5 = 255$	
Health/PE	90	5	$90 \times 5 = 450$	
Photo/G. Arts	100	5	$100 \times 5 = 500$	

Add up GradeX Attempted Credits and divide by number of credits attempted:

Class	Grade X Attempted Credits	Attempted Credits
Algebra 1 CP	415	5
World History Accel	450	5
English 1 Honors	425	5
Biology Honor	395	5
Latin 1 Honors	255	5
Health/Pe	450	5
Photo/G. Arts	500	5
Total	2890	35

$$2890/35=82.6$$

Unweighted GPA

Every class has the same weight

Usually lower than Academic Weighted GPA



Decision time!

A in College Prep US History

Vs

B in Accelerated US History

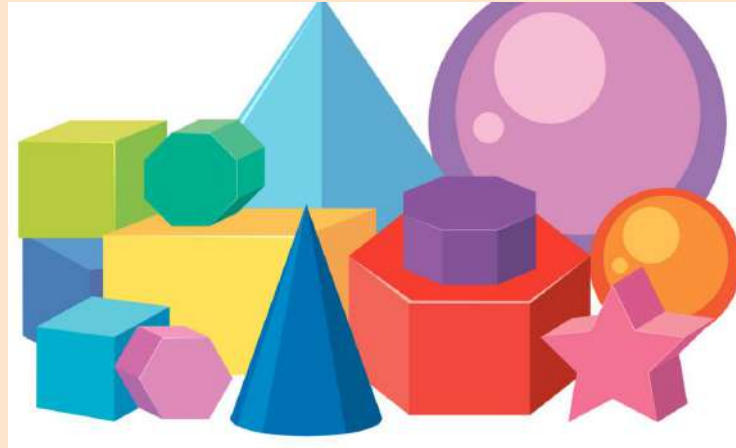


Decision time!

A in Accelerated Geometry

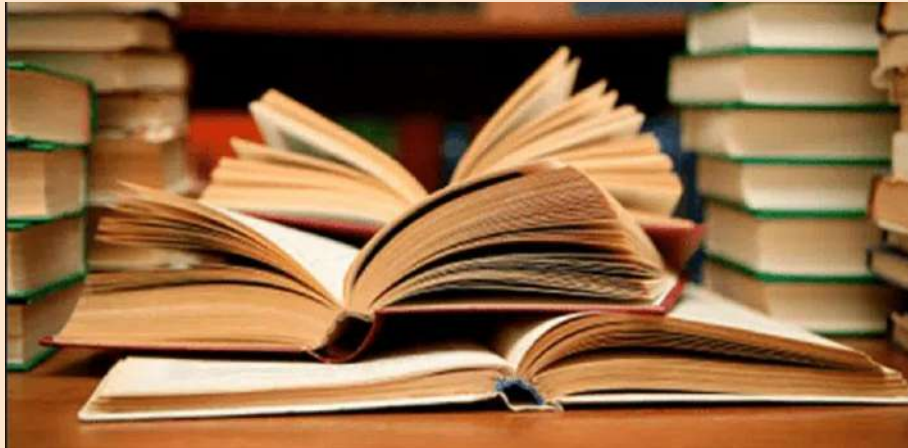
Vs

B in Honors Geometry



Decision time!

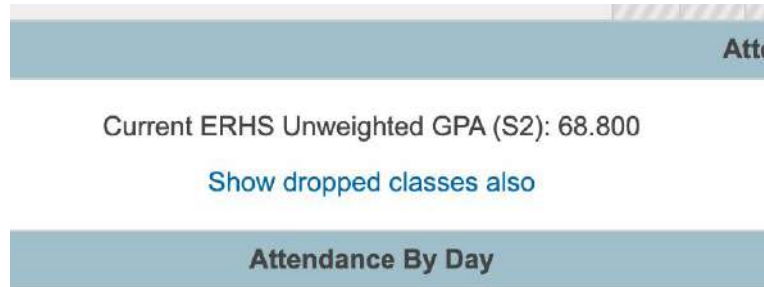
A in Advanced Placement English Vs B in Honors English



GPA Calculation has been or will be reviewed in Freshmen Study Halls in March or April

Students also received a worksheet to calculate their own GPA.

NO:



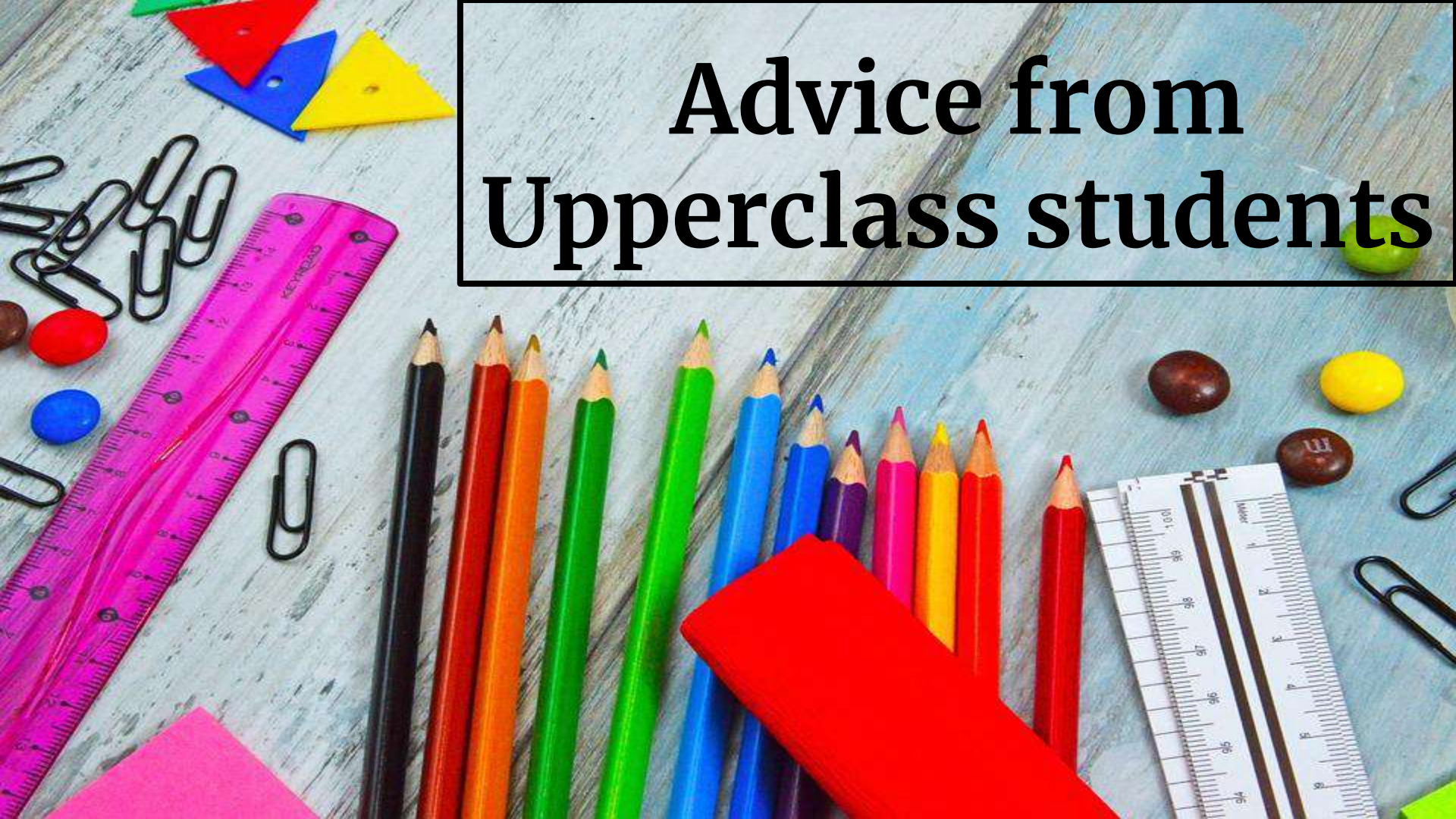
Att

Current ERHS Unweighted GPA (S2): 68.800

[Show dropped classes also](#)

Attendance By Day

Advice from Upperclass students





Advice About...

CLASSES

I didn't know how important my finals were and how much they would impact my final grade.

Your teachers will always support you!

Teachers give you a lot more responsibility.

Make sure you do your hw cause the work only gets harder.

Chemistry was one of the harder sciences.

There is a major difference between chemistry and biology.

There is a lot more homework in sophomore year.

The course load does build upon itself and that school work does become more difficult.

Make sure that you move up into a more difficult class if you have the grades regardless of whether your teacher recommends you or not.

The workload increases and teachers aren't as lenient.

I wish that I had known that the teachers will not be as understanding as they were during freshman year. During sophomore year, teachers are stricter about being on time to class, homework being completed, and turning things in on time.

It is crucial that freshmen continue to stay focused during their sophomore year because the workload greatly increases.



Advice About...

LUNCH

MAKE SURE YOU UTILIZE LUNCH AND LEARN TO TALK TO YOUR TEACHERS FOR EXTRA HELP.

IT IS VITAL THAT STUDENTS UTILIZE LUNCH AND LABS FOR EXTRA HELP.

IT IS ALSO IMPORTANT THAT STUDENTS JOIN CLUBS, AND SOME MEET DURING LUNCH

GO TO LUNCH HELP WHETHER YOU ARE CONFUSED OR JUST NEED TO CLARIFY SOMETHING; IT IS IMPORTANT TO USE THIS TIME WISELY.



Advice About...

TIME MANAGEMENT

I wish I knew that time management is very important, especially without a study hall.

Do not procrastinate because it will come back to haunt you; keep up to date with your assignments

I wish I knew more about managing my time with extracurriculars and other activities. The more involved you are, the better you need to manage your time.



Advice About...

THE FUTURE

While college seems really far away, you won't realize how close it is till you hit sophomore year.

Look at all the class options and make sure you know what electives interest you.

Get involved during the summer, whether it be through volunteering or summer programs.

You should keep your resume updated as you do things.

It is also important that students join clubs; becoming involved isn't only a "freshman year thing"

The importance of having a well-rounded resume

GPA is averaged between all four years.

Make sure you begin to brainstorm colleges/training programs you may be interested in attending.



Advice About...

LIFE

Never put your mental state and overall happiness after school. A test is just a test and a quiz is only a quiz, failure isn't only about failing, it's about how you respond to failure. Life and school aren't always going to be successful, but you will be if you strive to work hard.

Do not strive for perfection, but instead personal growth because that's what's important.

School isn't everything.

Be confident in your own abilities.

One bad grade isn't the end of the world.

Have fun but not too much fun.

Finding an extra hobby can really help with stress.

People change.

Continue to work hard, but don't stress as much about little things.

The importance of challenging yourself but still remembering what you can handle.

Going into my sophomore year, I wish I would have known that I need to stop sending my friends work when they don't do anything in return.

The background of the image is a dense, overlapping collage of small, rectangular paper scraps in various colors including red, blue, green, yellow, pink, and white. Each scrap features a large, black question mark, creating a visual pun on the text overlaid on the image.

Questions?

Thank you for your time!