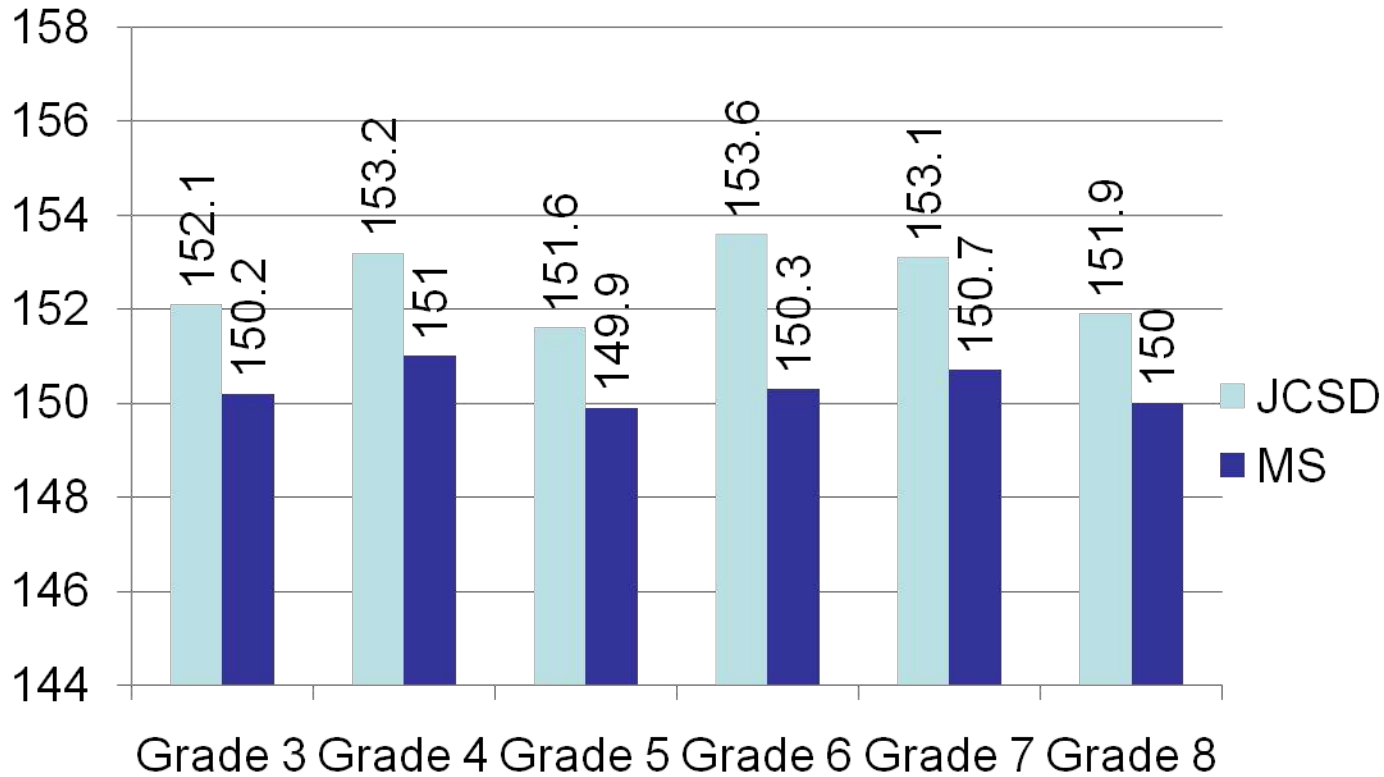


Jackson County School District

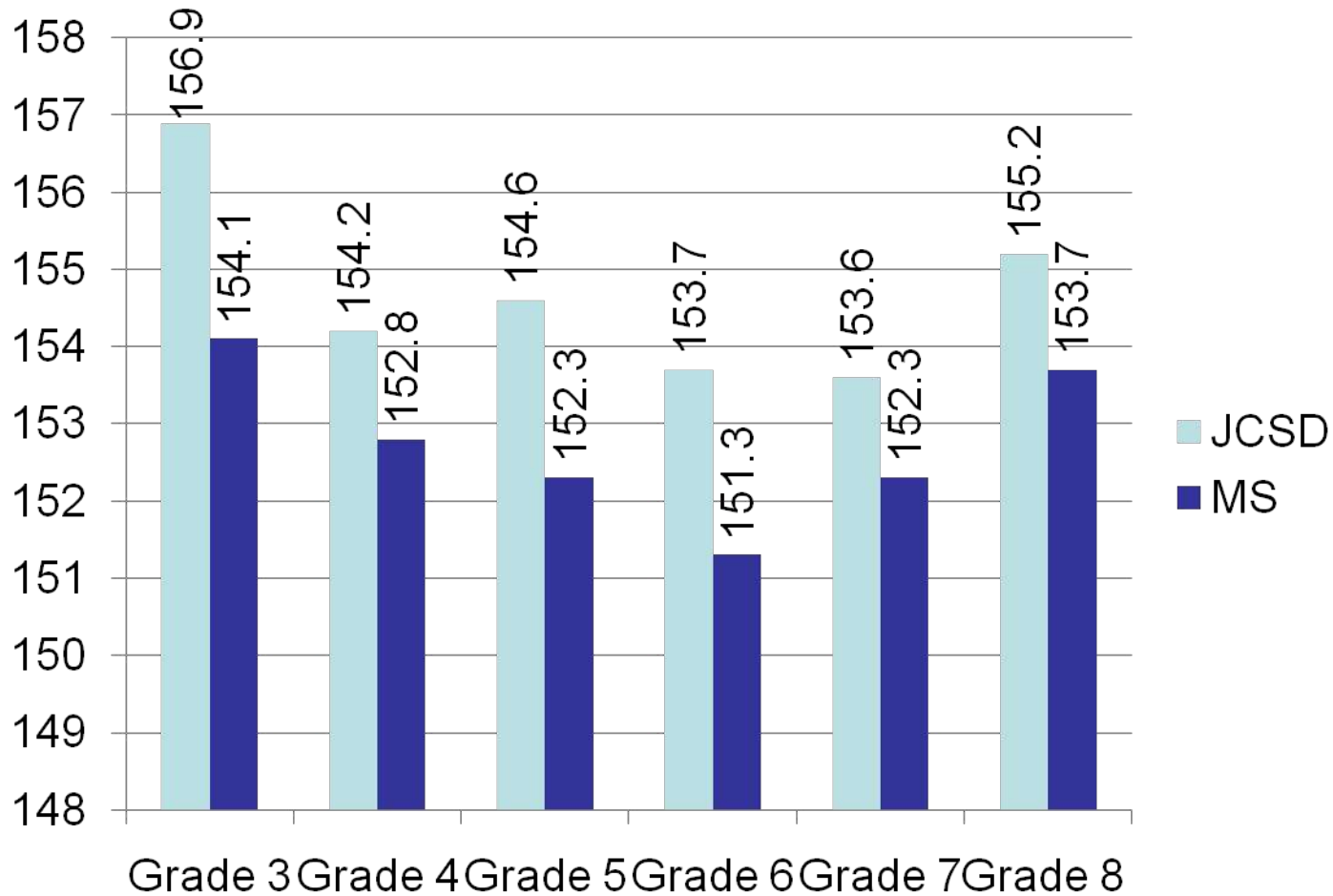
2012 Preliminary Test Results

- **Mississippi Curriculum Test, 2nd Edition
(Grades 3 – 8, Language Arts and Mathematics)**
- **Subject Area Testing Program**
- **MS Science Test – Grades 5 and 8**
- **ACT**

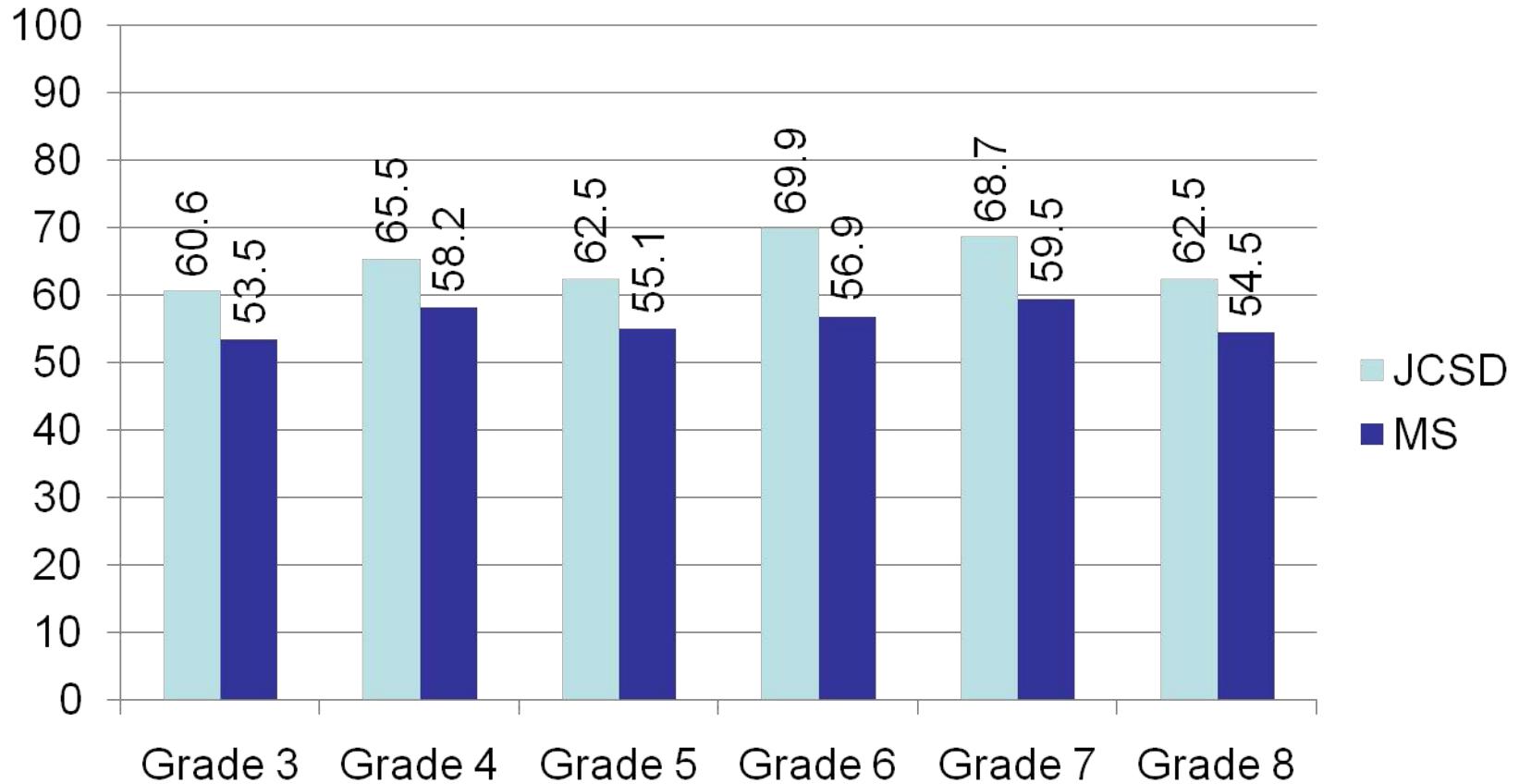
2012 MCT2 Language Arts Mean Scale Score



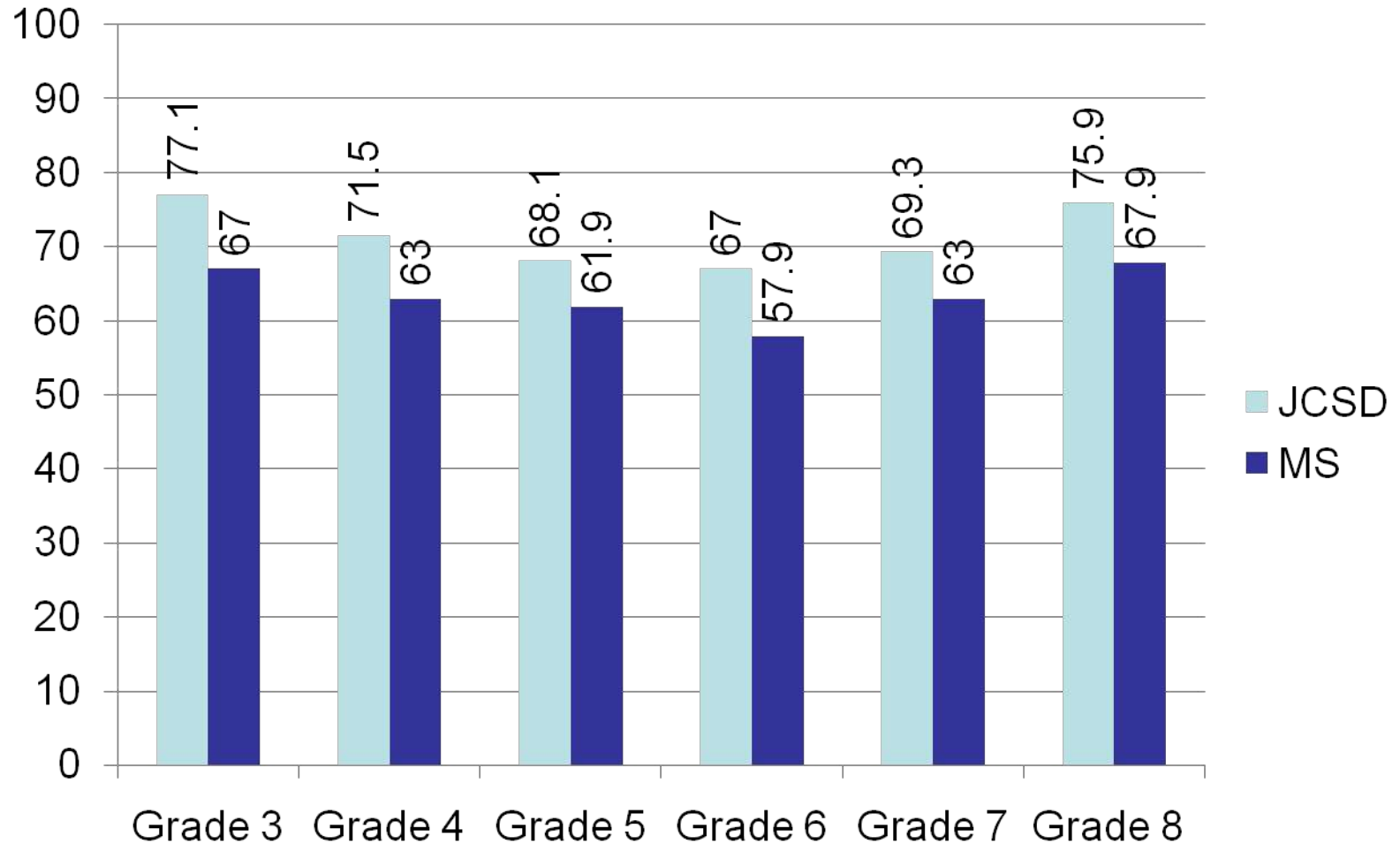
2012 MCT2 Mathematics Mean Scale Score



2012 MCT2 Language Arts % Proficient/Advanced



2012 MCT2 Mathematics % Proficient/Advanced



2012 JCSD

Language Arts ~ Grade 3

	% MIN		% BASIC		% PROF		% ADV
ECUE	9%	ECUE	27%	ECUE	42.3%	ECUE	21.7%
SMEE	7.6%	SMEE	25.5%	SMEE	40.1%	SMEE	26.8%
SMNE	7.9%	SMNE	38.4%	SMNE	35.4%	SMNE	18.3%
VUE	12.4%	VUE	29.5%	VUE	38.9%	VUE	19.2%

2012 JCSD

Language Arts – Grade 4

	% MIN		% BASIC		% PROF		% ADV
ECUE	9.0%	ECUE	31.2%	ECUE	45.7%	ECUE	14.1%
SMUE	10.0%	SMUE	23.5 %	SMUE	41.3%	SMUE	25.2%
VUE	5.0%	VUE	25.9%	VUE	43.8%	VUE	25.4%

2012 JCSD

Language Arts ~ Grade 5

	% MIN		% BASIC		% PROF		% ADV
ECUE	9.3%	ECUE	26.4 %	ECUE	56.5%	ECUE	7.9%
SMUE	8.9%	SMUE	26.6%	SMUE	53.7%	SMUE	10.9%
VUE	9.3%	VUE	34.6%	VUE	44.5%	VUE	11.5%

2012 JCSD Language Arts ~ Grade 6

	% MIN		% BASIC		% PROF		% ADV
ECMC	6.6%	ECMS	24.6%	ECMS	54.5%	ECMS	14.2%
SMMS	5.8%	SMMS	24.1%	SMMS	59.1%	SMMS	11.0%
VMS	5.6%	VMS	23.9%	VMS	62.4%	VMS	8.1%

2012 JCSD Language Arts ~ Grade 7

	% MIN		% BASIC		% PROF		% ADV
ECMS	6.4%	ECMS	25.1 %	ECMS	62.1%	ECMS	6.4%
SMMS	8.5%	SMMS	22.0 %	SMMS	64.5%	SMMS	5.0%
VMS	11.5%	VMS	20.8%	VMS	61.2%	VMS	6.7%

JCSD

Language Arts ~ Grade 8

	% MIN		% BASIC		% PROF		% ADV
ECMS	10.7%	ECMS	28.3%	ECMS	51.7%	ECMS	9.3%
SMMS	11.3%	SMMS	28.5%	SMMS	52.3%	SMMS	7.9%
VMS	10.7%	VMS	21.3%	VMS	61.2%	VMS	6.7%

2012 JCSD Mathematics ~ Grade 3

	% MIN		% BASIC		% PROF		% ADV
ECUE	5.3%	ECUE	13.8 %	ECUE	45.50 %	ECUE	35.4%
SMEE	1.9%	SMEE	19.2 %	SMEE	53.8%	SMEE	25.0%
SMNE	2.4%	SMNE	15.9%	SMNE	59.8%	SMNE	22.0%
VUE	8.9 %	VUE	22.9 %	VUE	46.4 %	VUE	21.9 %

2012 JCSD Mathematics ~ Grade 4

	% MIN		% BASIC		% PROF		% ADV
ECUE	3.0%	ECUE	20.2 %	ECUE	64.6 %	ECUE	12.1 %
SMUE	6.2%	SMUE	24.1 %	SMUE	56.5 %	SMUE	13.2 %
VUE	7.5 %	VUE	23.1 %	VUE	57.3 %	VUE	12.1 %

2012 JCSD Mathematics ~ Grade 5

	% MIN		% BASIC		% PROF		% ADV
ECUE	4.2 %	ECUE	22.4 %	ECUE	51.9 %	ECUE	21.5%
SMUE	8.8 %	SMUE	23.9 %	SMUE	48.0%	SMUE	19.3%
VUE	10.3%	VUE	26.1 %	VUE	42.4 %	VUE	21.2 %

2012 JCSD Mathematics ~ Grade 6

	% MIN		% BASIC		% PROF		% ADV
ECMS	13.0 %	ECMS	23.3 %	ECMS	48.4 %	ECMS	15.3 %
SMMS	11.2 %	SMMS	17.6 %	SMMS	50.0 %	SMMS	21.2%
VMS	14.2%	VMS	22.3 %	VMS	47.2 %	VMS	16.2 %

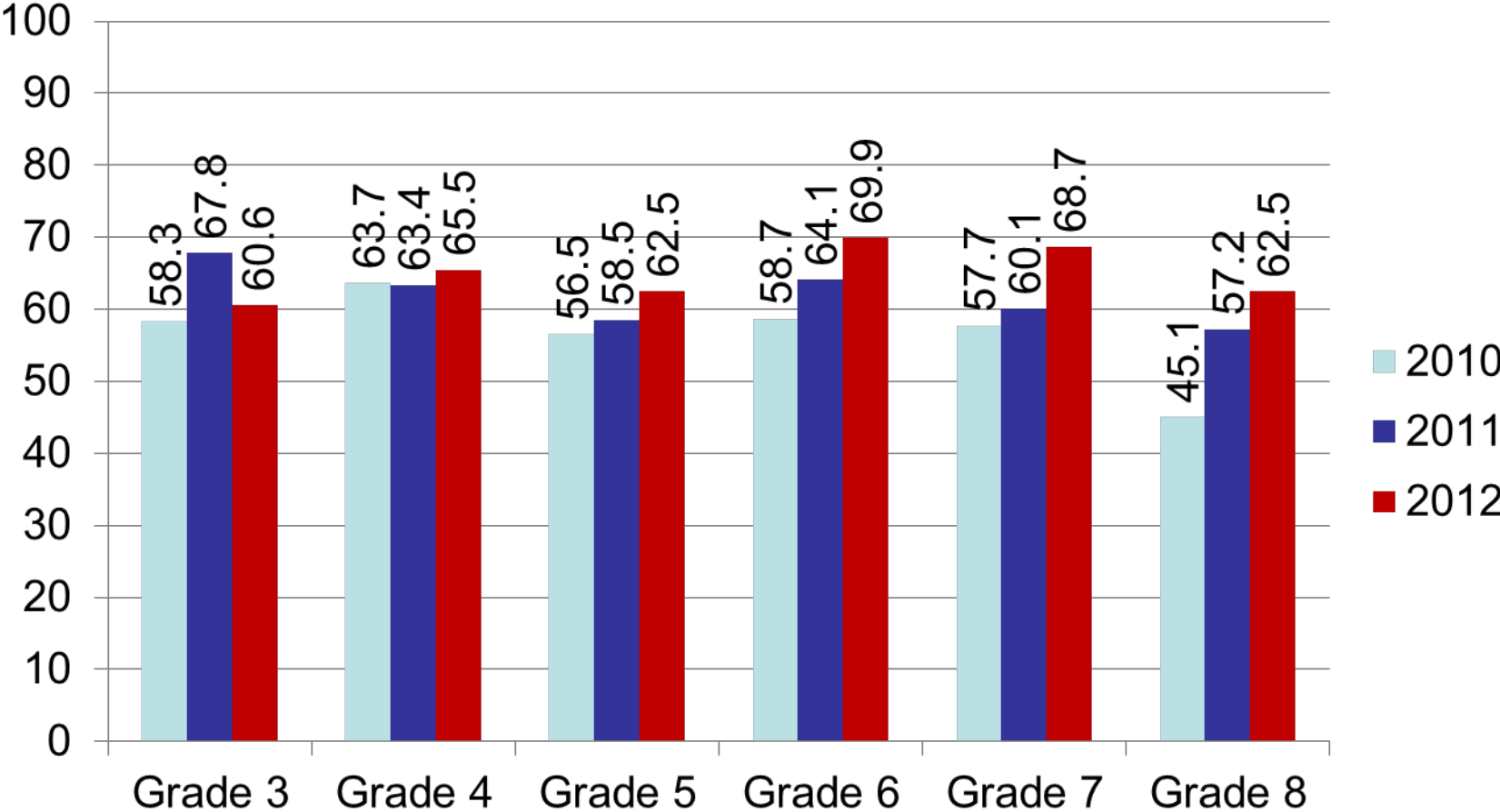
2012 JCSD Mathematics ~ Grade 7

	% MIN		% BASIC		% PROF		% ADV
ECMS	10.6%	ECMS	19.7 %	ECMS	54.1 %	ECMS	15.6 %
SMMS	8.2%	SMMS	21.0 %	SMMS	54.8 %	SMMS	16.0 %
VMS	9.3 %	VMS	24.4 %	VMS	51.8 %	VMS	14.5 %

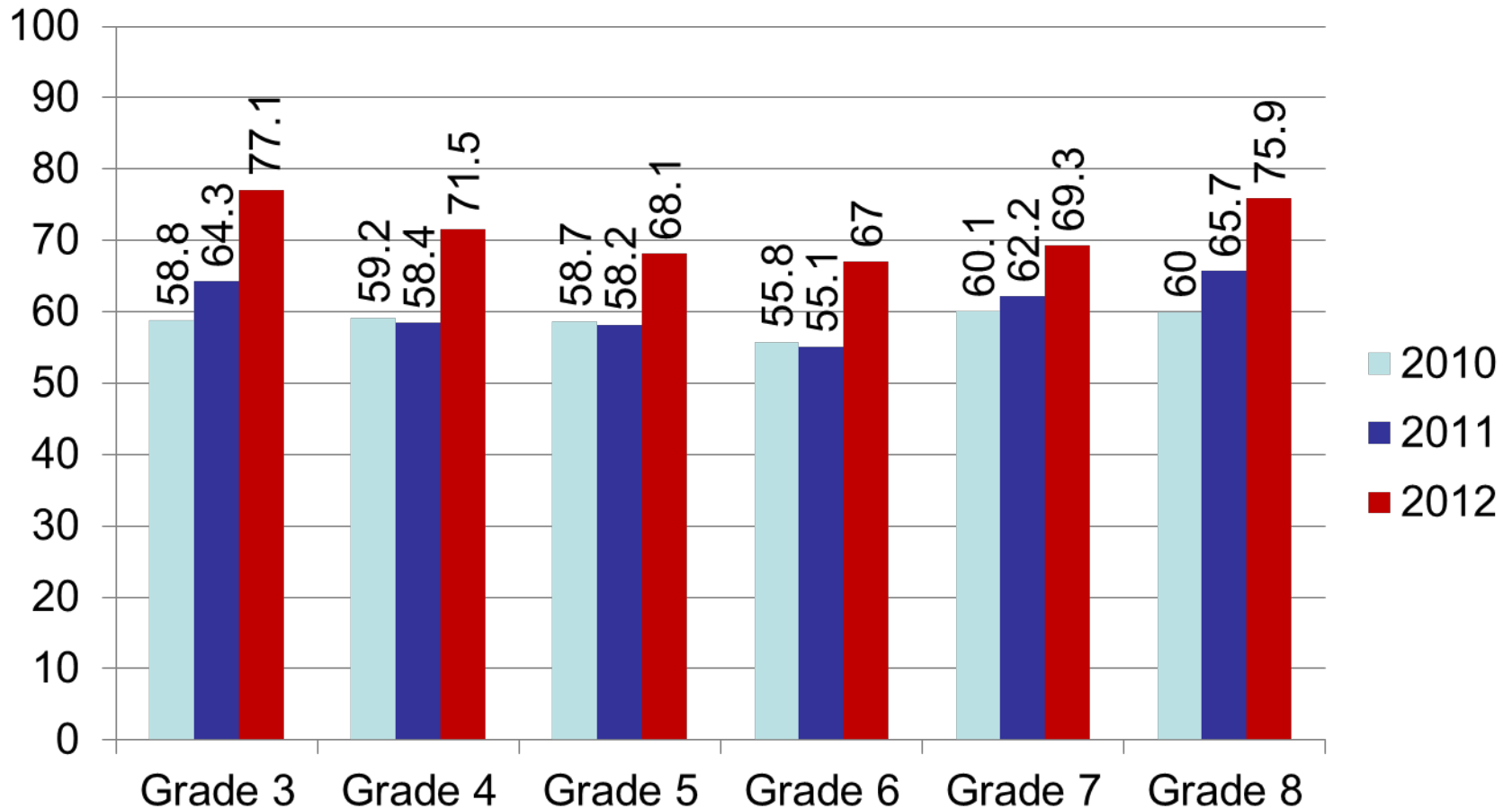
2012 JCSD Mathematics ~ Grade 8

	% MIN		% BASIC		% PROF		% ADV
ECMS	4.9%	ECMS	19.0 %	ECMS	56.1%	ECMS	20.0 %
SMMS	8.6 %	SMMS	15.2 %	SMMS	58.9 %	SMMS	17.2 %
VMS	7.9 %	VMS	16.9 %	VMS	59.0%	VMS	16.3 %

Three Year Trend ~ MCT2 Language Arts Percent Proficient and Advanced



Three Year Trend ~ MCT 2 Mathematics Percent Proficient and Advanced



MCT2 Three Year Trend in Mean Scale Scores ~ Language Arts

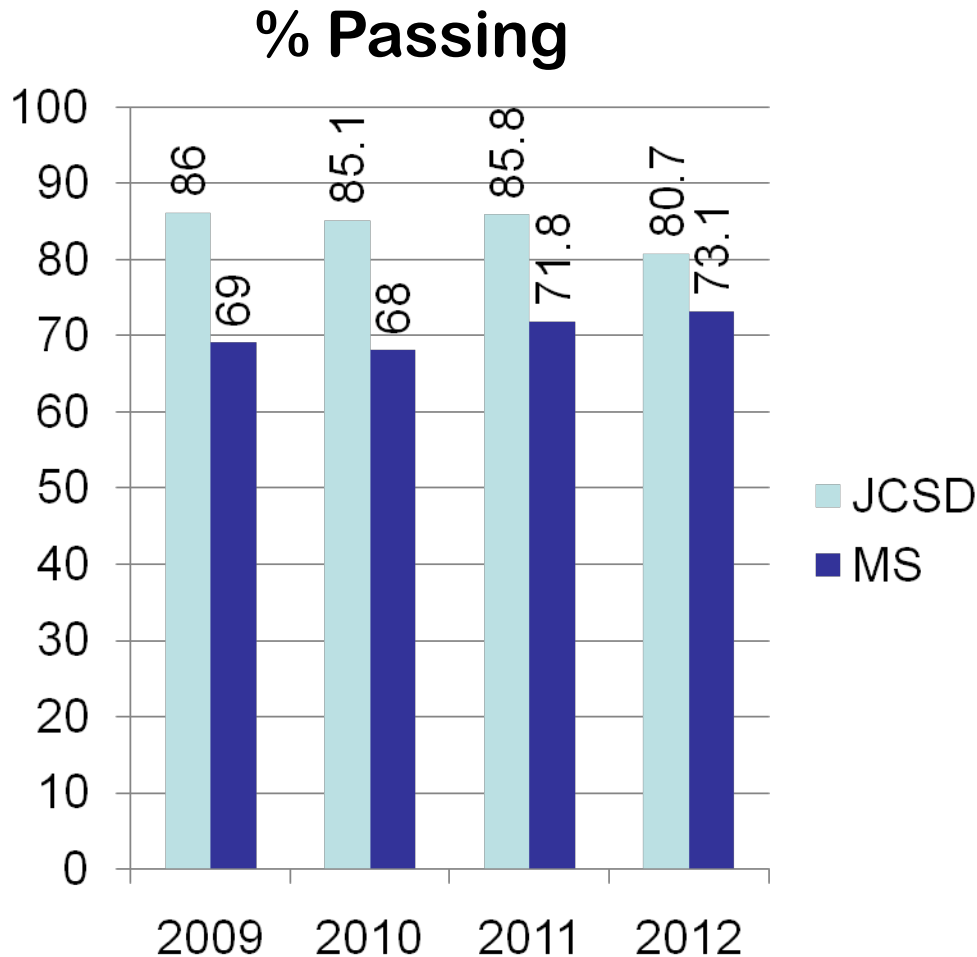
	2010	2011	2012
Grade 3	151.4	153.3	152.1
Grade 4	152.2	152.1	153.2
Grade 5	149.7	151.3	151.6
Grade 6	150.8	152.1	153.6
Grade 7	150.6	151.3	153.1
Grade 8	147.6	150.6	151.9

MCT2 Three Year Trend in Mean Scale Scores ~ Mathematics

	2010	2011	2012
Grade 3	152.1	153.3	156.9
Grade 4	151.5	151.7	154.2
Grade 5	151.3	151.4	154.6
Grade 6	150.5	150.6	153.7
Grade 7	151.1	152.1	153.6
Grade 8	151.5	153.2	155.2

2012 SATP ~ English II

Multiple Choice



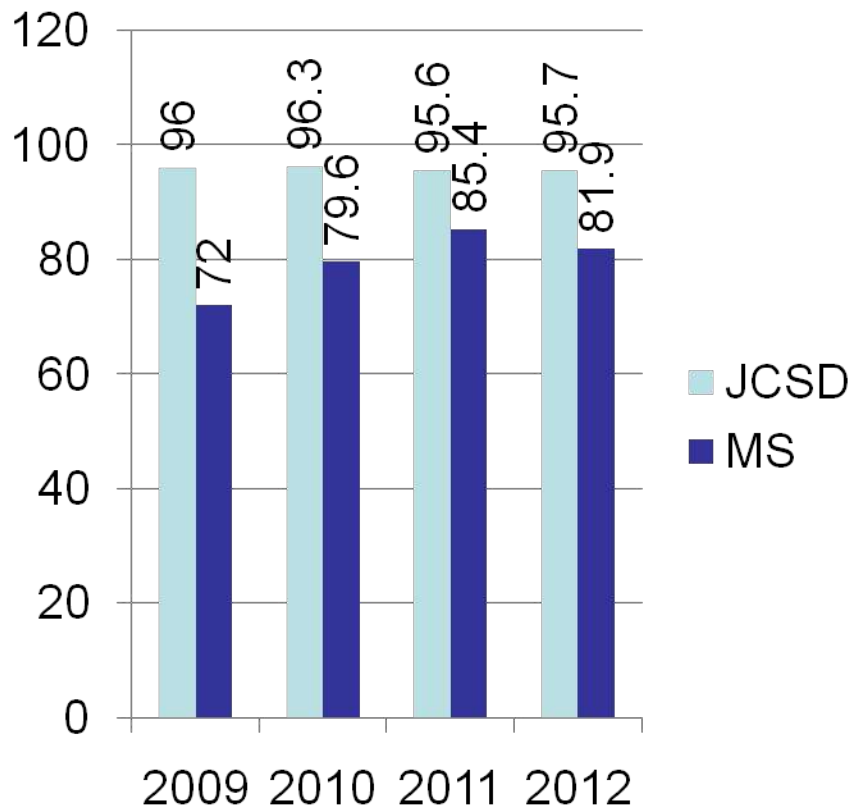
Mean Scores:

MS 2009	649.3
MS 2010	648.9
MS 2011	650.2
MS 2012	650.6

JCSD 2009	652.9
JCSD 2010	654.4
JCSD 2011	654.1
JCSD 2012	652.8

2012 SATP ~ Algebra I

% Passing

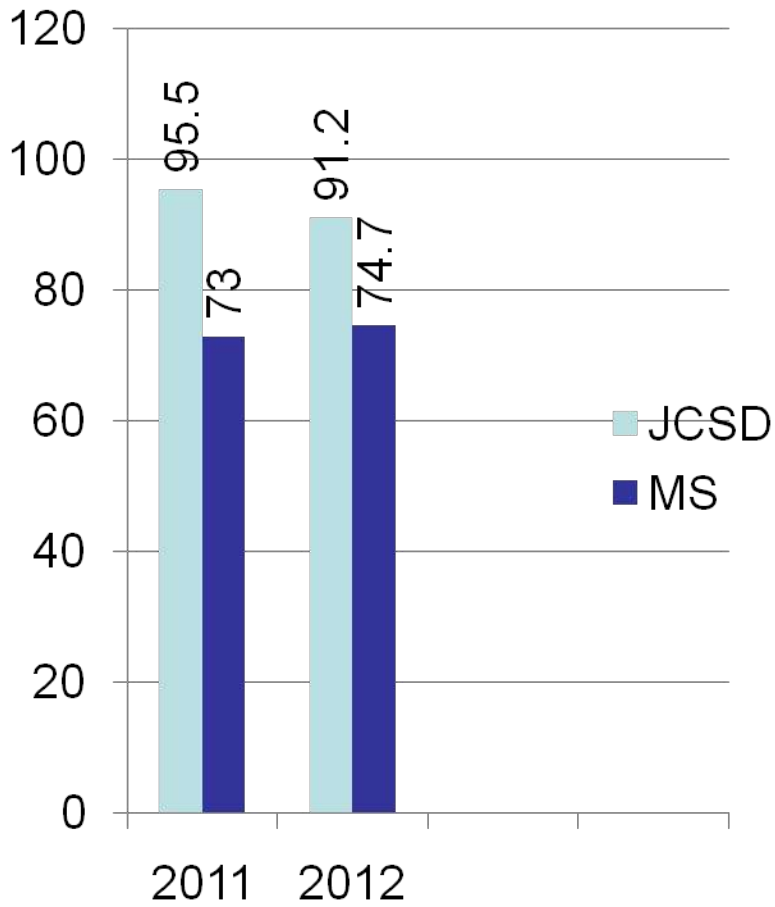


Mean Scores:

MS 2009	653.2
MS 2010	654.5
MS 2011	656.5
MS 2012	655.3

JCSD 2009	660.4
JCSD 2010	660.7
JCSD 2011	660.8
JCSD 2012	659.6

2012 SATP ~ Biology



Mean Scores:

MS 2011 647.1

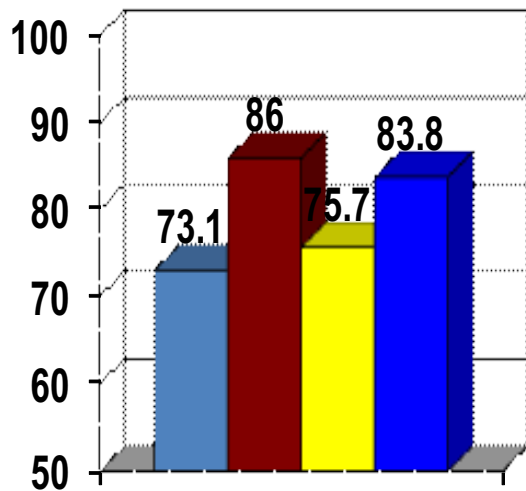
MS 2012 650.7

JCSD 2011 659.1

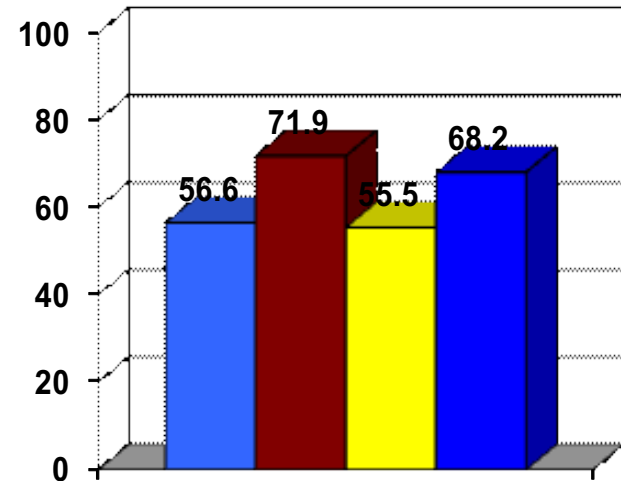
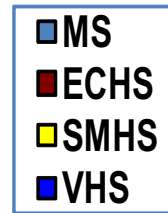
JCSD 2012 657.9

JCSD 2012 – English II MC

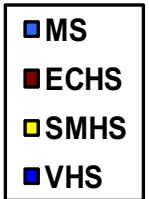
Comparison of all Three High Schools



% Pass



%PAA



Mean Scale Score

STATE 650.6

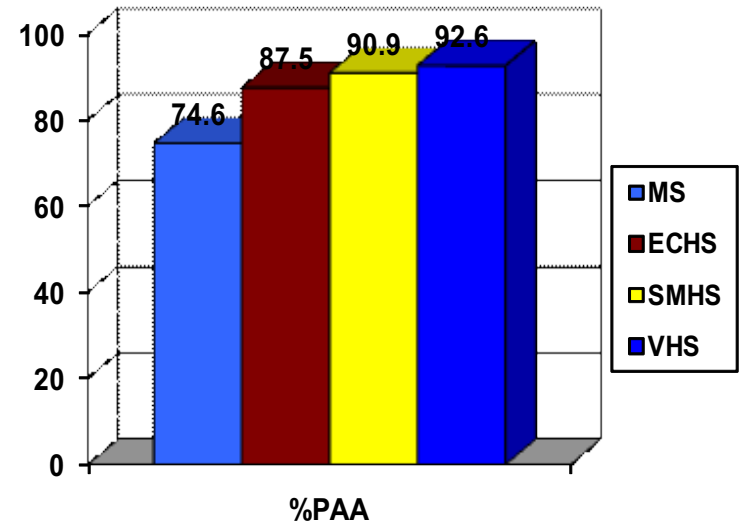
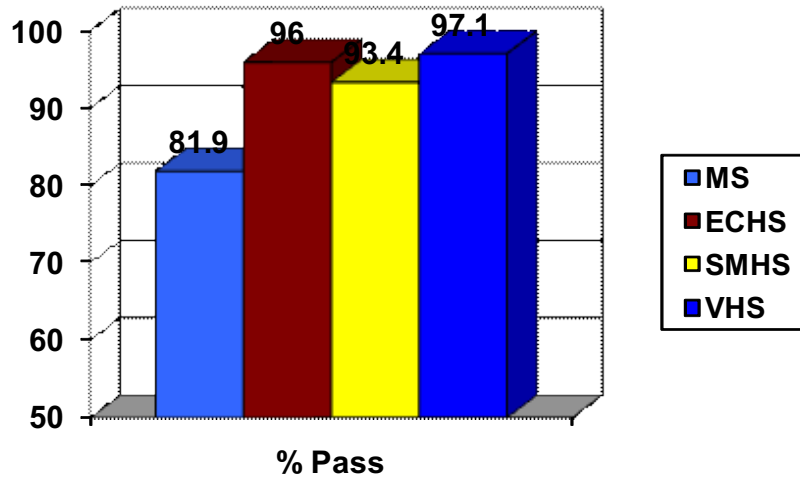
ECHS 655.4

SMHS 651.1

VHS 653.1

JCSD 2012 – Algebra I

Comparison of all Three High Schools



Mean Scale Score

STATE 655.3

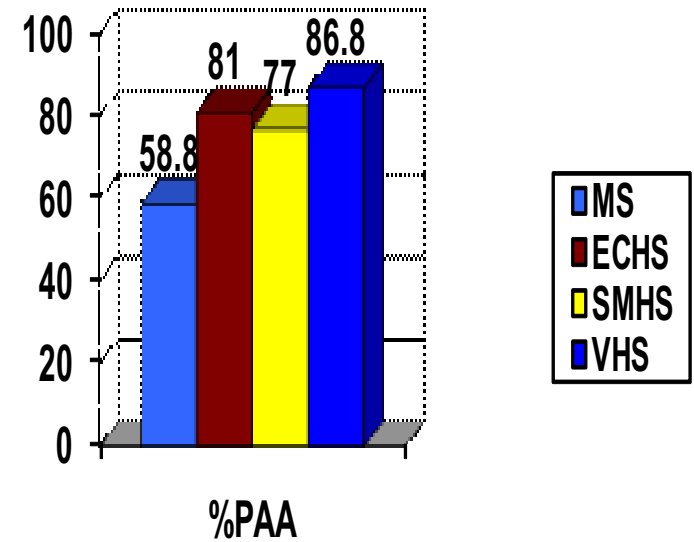
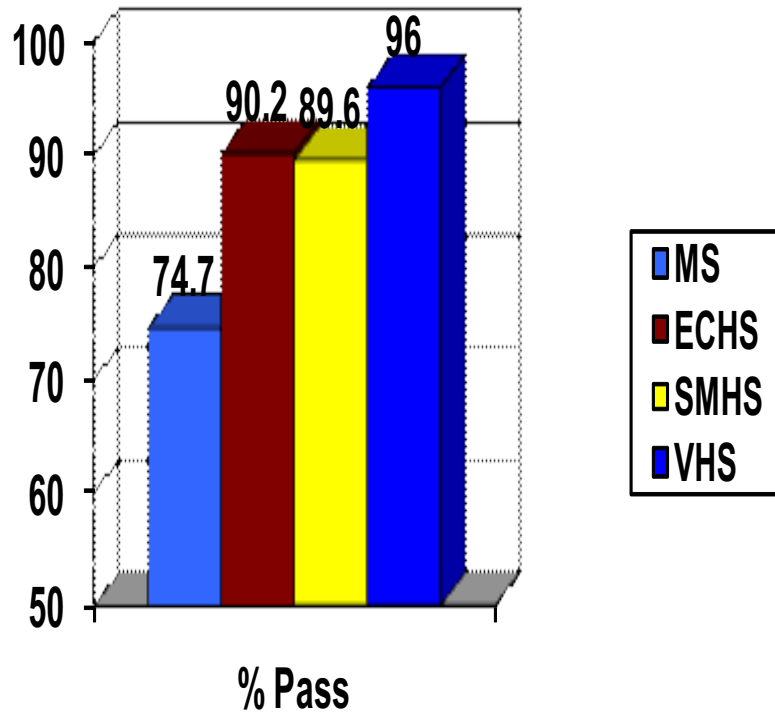
ECHS 658.6

SMHS 658.6

VHS 659.8

JCSD 2012 – Biology

Comparison of all Three High Schools



Mean Scale Score

STATE	650.7	ECHS	658.9
SMHS	656.6		
VHS	659.7		

MS Science Test 2012

	Mean Scale Score	% Prof/Advanced
MS Grade 5	149.953.6	
MS Grade 8	150.4	56.4
JCSD Grade 5	153.0	68.2
JCSD Grade 8	151.4	65.2

ACT – Five Year Trend

JCSD District Average ACT Score - 2012 - 20.4

