

GREEN POD GRADE 6

Spring 2016

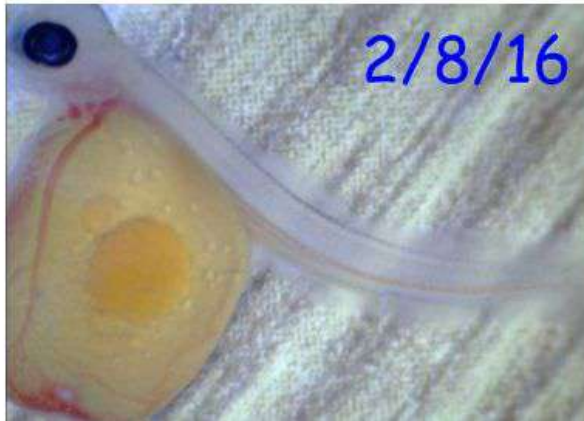
WHERE WE'VE BEEN IN SCIENCE...

- Ecology
 - Difference between living and nonliving
 - Parts of an ecosystem
 - Energy in the ecosystem
 - energy roles, food webs
 - Human impacts on the ecosystem
 - “Show Me the Green” project

WHERE WE ARE GOING IN SCIENCE...

- Ecology
 - Interactions
 - Predator/Prey
 - Symbiosis
 - Adaptations
- Watershed
 - Focus on Long Island Sound Watershed
- Weather
 - Three main weather factors (heat, air, water)
 - Local and Global weather factors

SALMON



SALMON RELEASE FIELD TRIP

- Thursday, May 5th
 - Salmon River in Colchester
 - 9:00am - 12:15pm
- Please consider volunteering to chaperone.



WORLD CULTURES AND GEOGRAPHY

MINI-UNIT:

REGIONS OF STUDY:

Culture

~~Western Europe~~

Social Sciences

~~Middle East~~

Geography

**China and its
Neighbors**

West and Central
Africa



CHINA AND ITS NEIGHBORS

- Map and physical features
- Ancient Dynasties of China
- Film: *The Last Emperor*
- Impacts of Communism
- Command vs Market Economy
- Culture Learning Stations
- Buddhism
- Current Events
- Read Aloud: *Where the Mountain Meets the Moon*

WHERE WE'VE BEEN IN LANGUAGE ARTS...

- Monthly reading “page goals” (due today)
- Practiced generating claims(main idea) and supporting with evidence(examples/details)
 - * Argumentative theme essay
 - * Teen activist essay

WHERE WE ARE NOW

Informational books writing skills

- * Generating claims
- * Supporting those two claims with evidence from research

How can I help my child with his or her writing?

- * Read aloud for sentence fluency and typing errors
- * Check for evidence in each body paragraph
- * Ask, “Did you explain how each piece of evidence supports your claim?”

MATHEMATICS 3-30-16

Completed curriculum: Math in Focus book

Blue and Green Math (Accelerated Math):

Completed chapter six (Percents) and chapter seven (simplifying expressions) units.

Red and Yellow Math(Grade Level Math):

Completed chapter five (Rate/Unit Rate). We just finished chapter six unit on percents. They are taking a test tomorrow.

NEXT UNITS : BOOK B

Chapter 8 Equations and Inequalities:

We are covering section 8-1 Solving algebraic equations and 8-4 Word Problems (part that covers solving equations). Seventh grade will cover the inequalities.

Chapter 10 Area of Polygons- all sections

Chapters 13 and 14: Introduction to statistics and Measure of Central Tendencies (Mean, Median and Mode).

ONLINE TEXTBOOK

Students have access to online textbook.

My Hrw.com

They already have the password.

Students have access to practice problems, enrichment problems and re-teach problems.

ASSESSMENTS

Homework Quiz:


Questions come directly from completed, corrected homework. No Retakes on this.

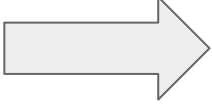
Students are advised to come for extra help. This is a nice way to develop that self-advocacy skill.

End of the unit test and quizzes:

Students are allowed to retake the assessment after the reflection and extra help session.

PLACEMENTS FOR 7TH GRADE


6  7

6+  7+

The majority of students will stay in their current level in 7th grade.

The 7 and 7+ courses have the same content. In addition to Math 7 content, 7+ will complete essential Math 8 curricula in preparation for a study of Algebra 1 in grade 8. Pacing and level of complexity are the major differences.

PLACEMENTS FOR 7TH GRADE

6  7+

A few students may be recommended to move up a level.

6+  Algebra 1+

If your child was not recommended to move up a level, you will need to complete the waiver process. A full description of this process will be presented at the upcoming Math Informational Sessions on April 12th.

MATH INFORMATIONAL SESSIONS

April 12th

The location is BMS Auditorium at 1:30PM and 7:00PM (same information will be shared at each session).

Direct questions regarding recommendation process and course progression to the 6-12 Math Coordinator

Andrew Hill 203-341-1471 ahill@westport.k12.ct.us