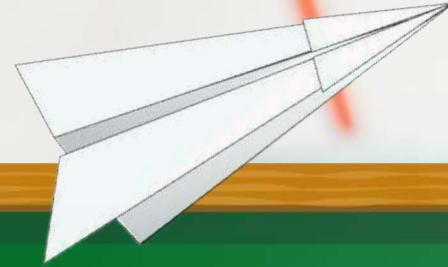


Helping Students Prepare for ILearn





What is ILEARN?

ILEARN is the summative accountability assessment for Indiana students. It measures a student's achievement and growth according to Indiana Academic Standards, aligned with new blueprints and item specifications.

NEW!

ILEARN Assessment Information for Families



5 Key Points for Families to Understand About Indiana's New Assessments



"Educator-Created; Student-Centered"



1. What is ILEARN?

ILEARN is Indiana's new online computer-adaptive assessment designed to measure your child's proficiency of the Indiana Academic Standards in Grades 3–8, Biology and U.S. Government. ILEARN fulfills both state and federal legislative requirements as the accountability assessment for Indiana students.

| Subject | Grade(s) |
|---|----------------|
| ILEARN English/Language Arts | Grades 3–8 |
| ILEARN Mathematics | Grades 3–8 |
| ILEARN Science | Grades 4 and 6 |
| ILEARN Social Studies | Grade 5 |
| ILEARN Biology End-of-Course Assessment (ECA) | High School* |
| ILEARN U.S. Government End-of-Course Assessment (ECA)(optional) | High School* |

*Taken at the end of the course, regardless of grade level.



2. What is a computer-adaptive assessment and how does it benefit my child?

Computer-adaptive assessments adapt to each student's mastery of the content throughout the assessment. Every time a student answers a question, his or her response helps determine the next question presented. **The difficulty of the test will adjust to each student's skills**, providing a better measure of what each student knows and can do.

• ILEARN is a computer-adaptive assessment. For more information about computer-adaptive assessments, visit: <https://www.doe.in.gov/assessment/assessment-literacy>.



5. When will I receive score reports about my student's performance on ILEARN?

• Schools can access final scores and score reports on August 15, 2019 in the Online Reporting System. Beginning in 2019–20, reports will be available to schools within 12 days of students testing.

• Reports provide a scale score as an indication of overall student achievement in a grade level, as well as several subscores.
• Parents and guardians may request rescores of open-ended items through the local school.

Contact us at: Inassessments@doe.in.gov with questions.



3. How does ILEARN support all students?

The new online testing system is easy to use and is more accessible to students who require features or accommodations while testing. New tools and resources are available to help students show what they know.

- Built-in glossaries allow students to select unfamiliar words and read their definitions. Glossaries are available in English, Arabic, Burmese, Mandarin, Spanish, and Vietnamese.
- Students are provided with authentic tools, such as spell check, a dictionary, and a thesaurus for use when responding to the writing task.
- The Desmos calculator (provided for Mathematics Grades 6–8) is available for students to practice using free of charge at: [desmos.com](https://www.desmos.com).
- Spanish translations (stacked over the English version) are available for Mathematics, Science, and Social Studies.



4. What resources are available to help prepare my child for ILEARN?

- Indiana's Released Items Repository allows students to interact with released items and try some of the tools and features at: <https://www.doe.in.gov/assessment/ilearn-sample-items-and-scoring>.
- Indiana's ILEARN Portal provides information and resources for understanding the assessment at: <https://ilearn.portal.airast.org/>.
- The ILEARN for Families website answers questions about ILEARN at: <https://www.doe.in.gov/assessment/ilearn-families>.

HOW IS ILEARN DELIVERED?



Computer Adaptive Test

Math & ELA (Grades 3-8)

- Individualize the test for students based on their responses to previous questions.
- The computer adaptive algorithm adjusts on difficulty within the grade-level standards.
- Test can be taken over multiple days. Untimed
- Must be completed before PT test is administered



Online Fixed Form Assessment

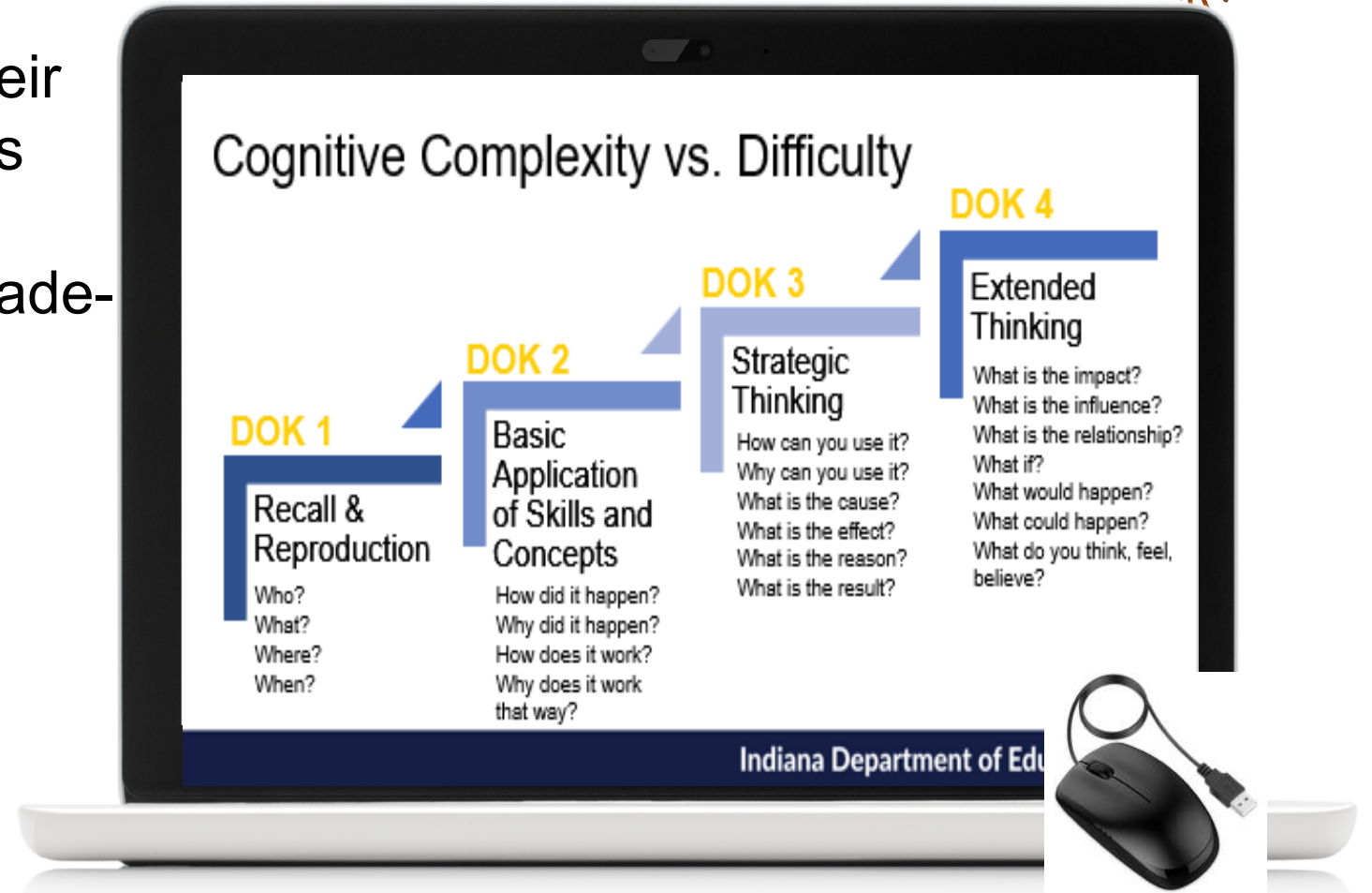
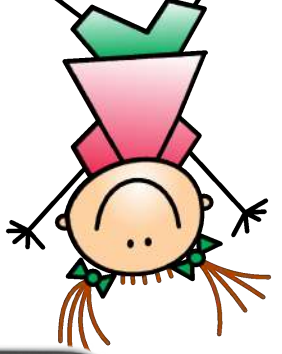
Science (Grades 4 and 6)

Social Studies (Grade 5)

- All students will receive the same test in the Spring of 2019 with the plan to transition to adaptive in the future.

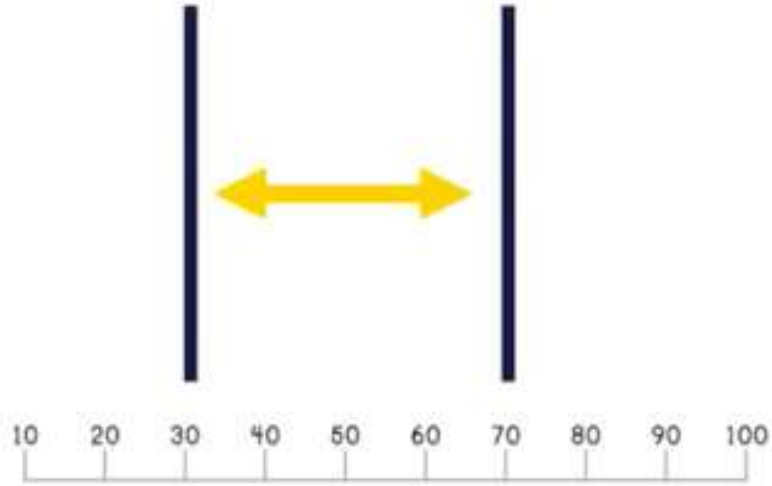
What is an **Computer Adaptive Test** ?

Individualized test for students based on their responses to previous questions, adjusts on difficulty within the grade-level standards.



Computer Adaptive and Standards-Based

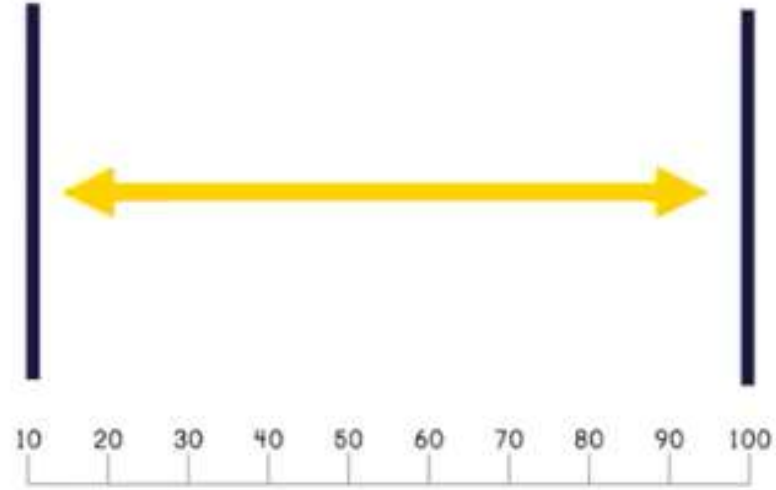
Fixed Form



Measures content within a narrower difficulty range, providing a narrower set of data.

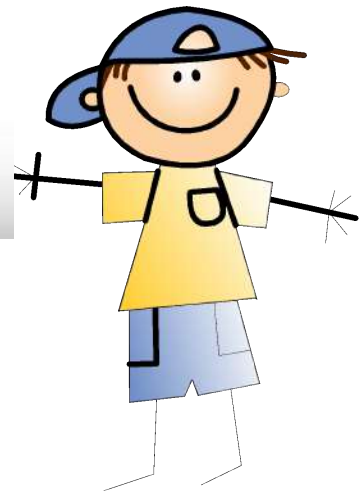
Same content, **same** difficulty, **same** items for all students.

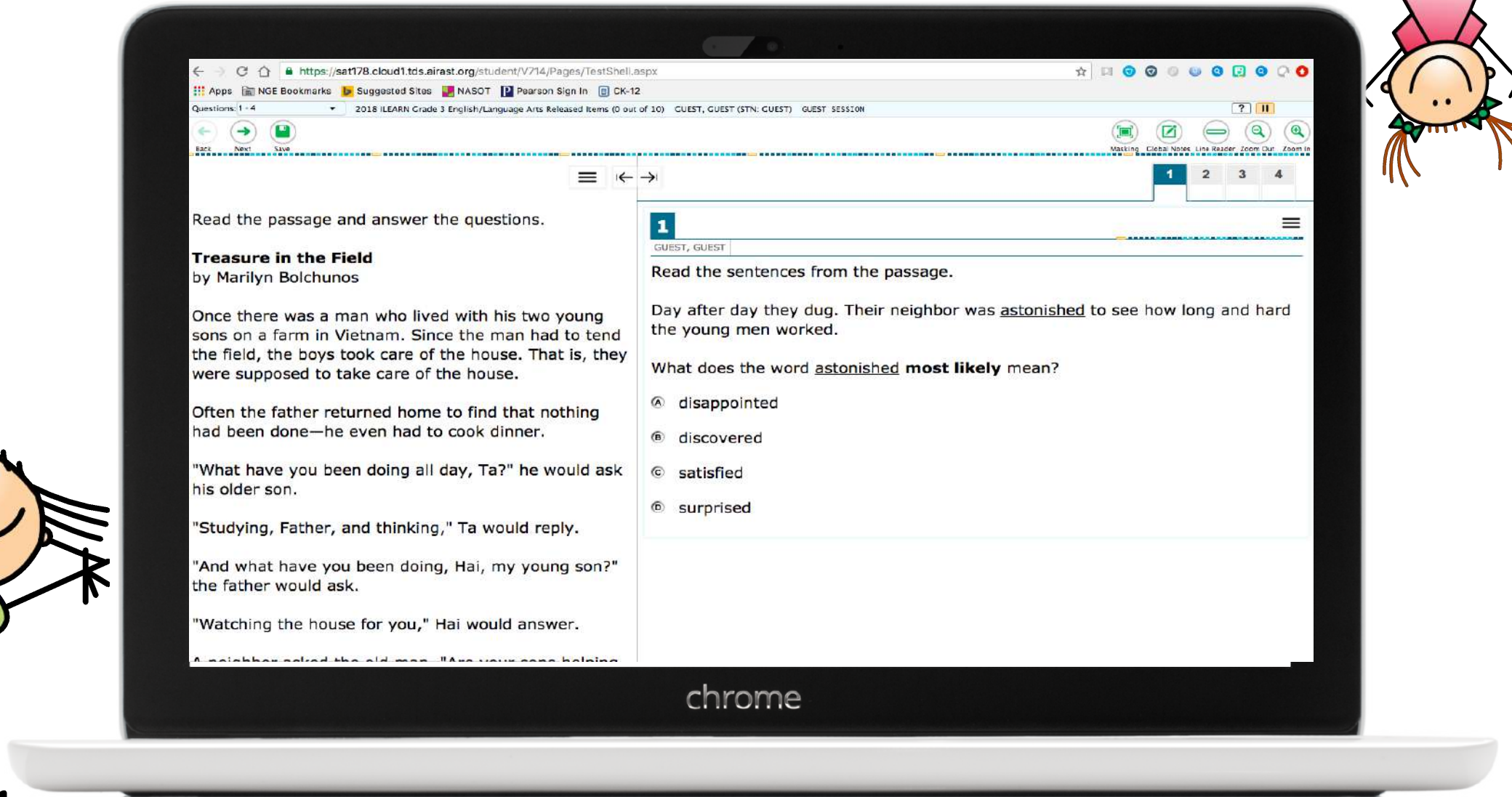
Computer Adaptive Form



Measures content within a broad difficulty range, providing more granular, detailed data.

Same content, **individualized** difficulty, **individualized** items for all students.





[Released Repository](#)

HOW CAN WE HELP STUDENTS PREPARE FOR I LEARN

**Think
positively**

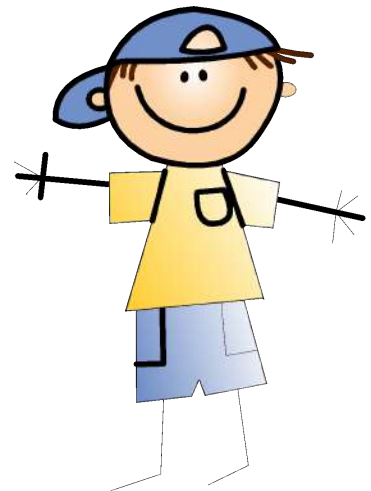
**Pace
Yourself**

**Check your
work**

**Get plenty
of sleep**

**Eat a healthy
breakfast**

Exercise



When will students be tested?

April 23rd- May 10th

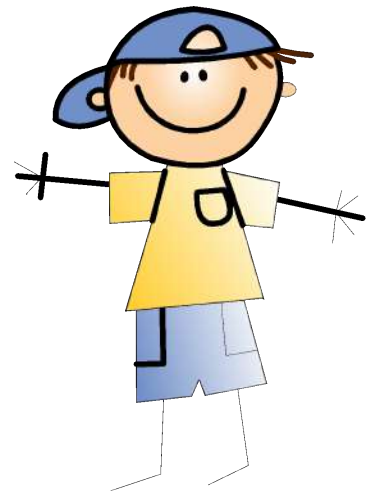
| Monday | Tuesday | Wednesday | Thursday | Friday |
|------------------------------|-----------------------|----------------------|-----------------------------|-----------|
| 15 Practice Tests→ | 16 | 17 | 18 | 19 |
| 22 | 23 Math CAT | 24 Math PT | 25 Math Make-ups→ | 26 |
| 29 ELA CAT | 30 ELA PT | 1 ELA PT | 2 ELA Make-ups→ | 3 |
| 6 Unified Sports | 7 SS/SC CAT | 8 SC PT | 9 Make-ups→ | 10 |
| 13 Make-ups→ | 14 | 15 | 16 | 17 |



RESULTS FOR I LEARN

For the 2018-2019 school year, results will be provided by August 15, 2019.

- This date allows for the determination of cut scores for this first round of ILEARN.



DO YOU HAVE ANY QUESTIONS?

