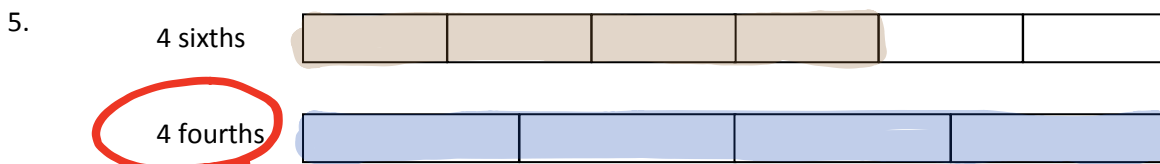
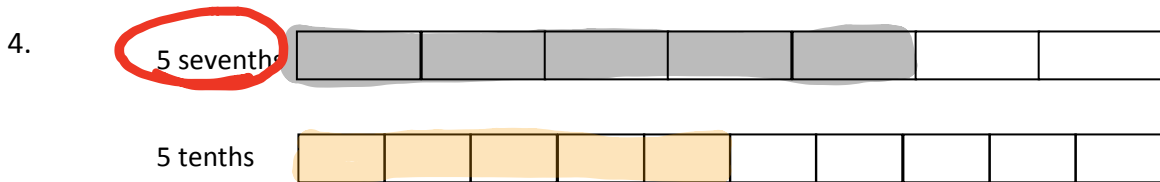
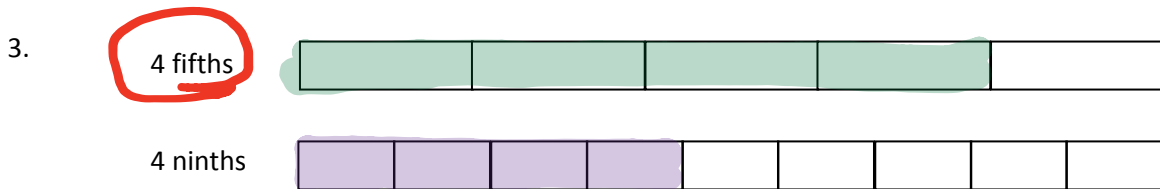
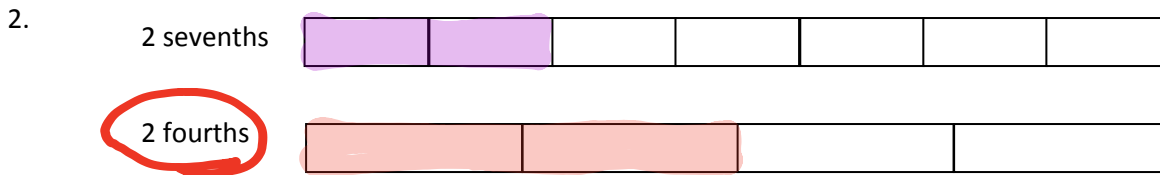
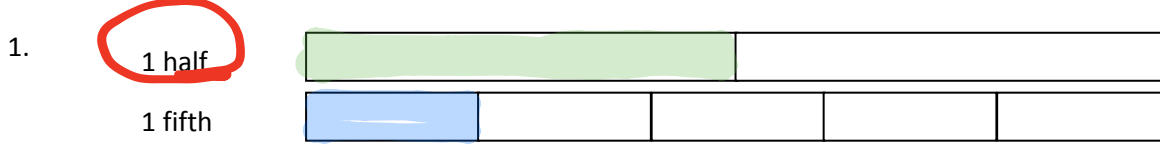


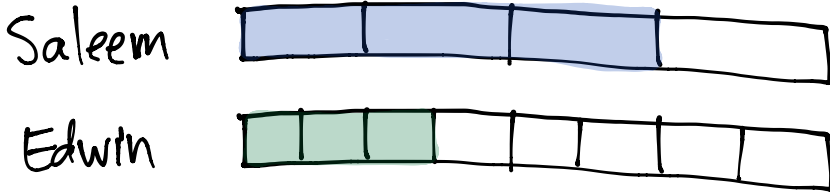
Name _____

Date _____

Directions: Shade the models to compare the following fractions. Circle the larger fraction for each problem.



6. In science Saleem and Edwin used an inch ruler to measure the length of each of their small caterpillars. Saleem’s caterpillar measured 3 fourths of an inch, and Edwin’s caterpillar measured 3 eighths of an inch. Whose caterpillar is longer? Use a tape diagram to show your work.

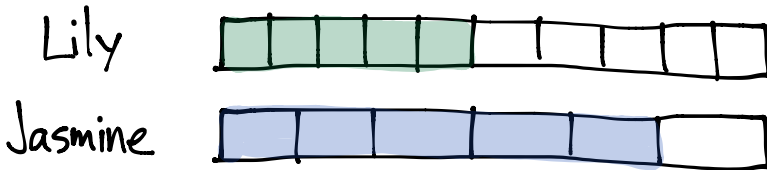


Saleem's caterpillar is longer.

$\frac{3}{4}$ is longer than $\frac{3}{8}$.

Think: 3 big pieces compared with 3 small pieces.

7. Lily and Jasmine are baking the same size chocolate cake. Lily put $\frac{5}{10}$ of a cup of sugar into her cake, and Jasmine put $\frac{5}{6}$ of a cup of sugar into her cake. Who used less sugar? Use a tape diagram to show your work.



Lily used less sugar.

$\frac{5}{10}$ is less than $\frac{5}{6}$

Think: 5 small pieces compared with 5 big pieces.