

Name _____

Date _____

The clock shows what time Jason gets to school in the morning.

- a. What time does Jason get to school?

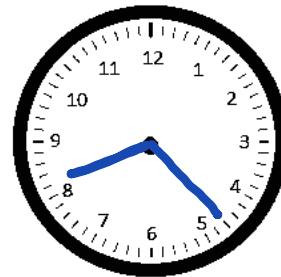
8:04 am

Arrival at School



- b. The first bell rings at 8:23 a.m. Draw hands on the clock to show when the first bell rings.

First Bell Rings



NOTE: The exact placement of the hour hand is not as important as the minute hand.

- c. Label the first and last tick marks 8:00 a.m. and 9:00 a.m. Plot a point to show when Jason arrives at school. Label it A. Plot a point on the line when the first bell rings and label it B.

