

# The Five Themes of Geography

(Or, how to make studying the earth easier!)



# Geography:

The study of Earth and everything on it.



# Theme 1: Location

Where is IT?

Why is IT there?



# Two types of location:

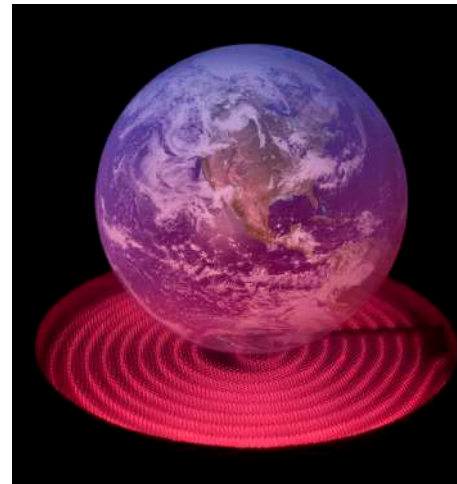
- Absolute

- Relative



# Absolute Location

- \* describes a place's exact position on earth*
- \* uses latitude & longitude*
- \* no two places have the same absolute location*
- \*(global address)*



# Absolute location

## Pennsylvania

41\* North latitude

77\* West longitude

(41\* N 77\* W)



## Harrisburg

40\* North latitude

77\* West longitude

(40\* N 77\* W)



# *Relative location*

***Where a place is in relation to another place***



***Uses directional words to describe (cardinal & intermediate directions)***

# Pennsylvania

Pennsylvania is bordered by New York on the north, Ohio on the west, West Virginia, Maryland and Delaware on the south and New Jersey on the east.

Harrisburg is about 12 miles west of Hershey.



# Theme 2: Place

What is a place like?

Describe its physical characteristics  
mountains, bodies of water,  
plants, animals, climate



# Pennsylvania's physical characteristics



Susquehanna River



Pocono Mountains



Farmland in PA



Deer in PA

# Describe its human characteristics

- *People*
- *Culture*
- *Languages*
- *Religions*
- *Cities*
- *Buildings & Landmarks*



# Pennsylvania's Human characteristics



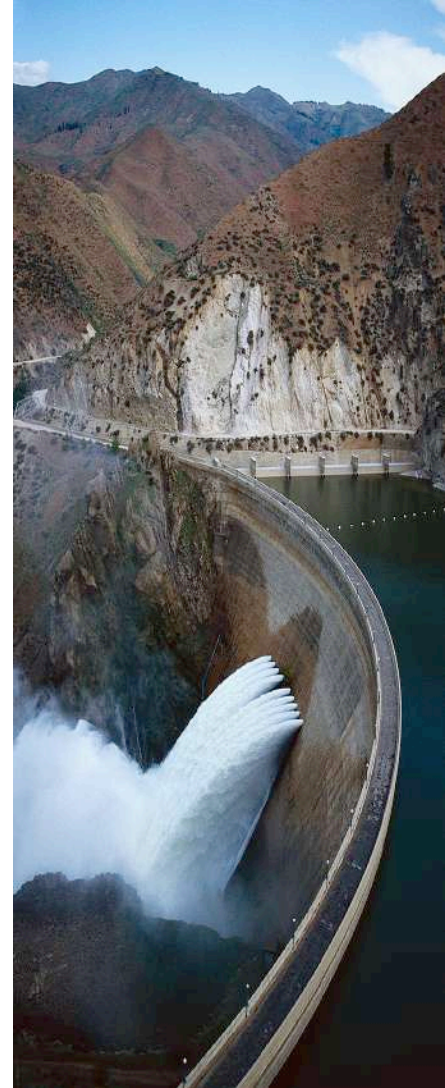
# Theme 3: Human-Environment Interaction

How do people...

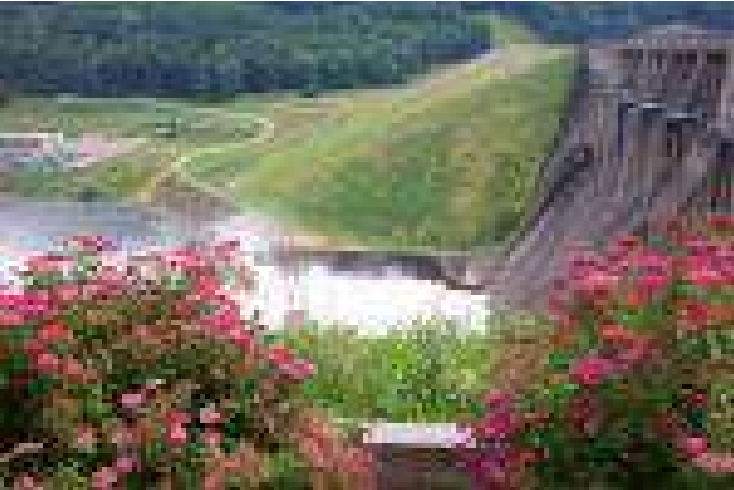
adapt to their environment?

modify their environment?

depend on their environment?



# Pennsylvanians interacting with their environment.



Kinzua Dam



Photo by Neal Palumbo

Ski Roundtop



Amish farmland



**We don't always interact in a positive way, unfortunately!**



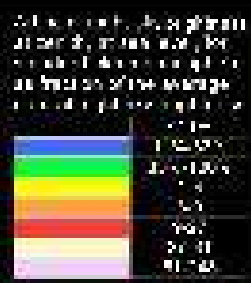
# Air pollution from Pittsburgh steel mills





# Artificial Night Sky Brightness due to Light Pollution in North America

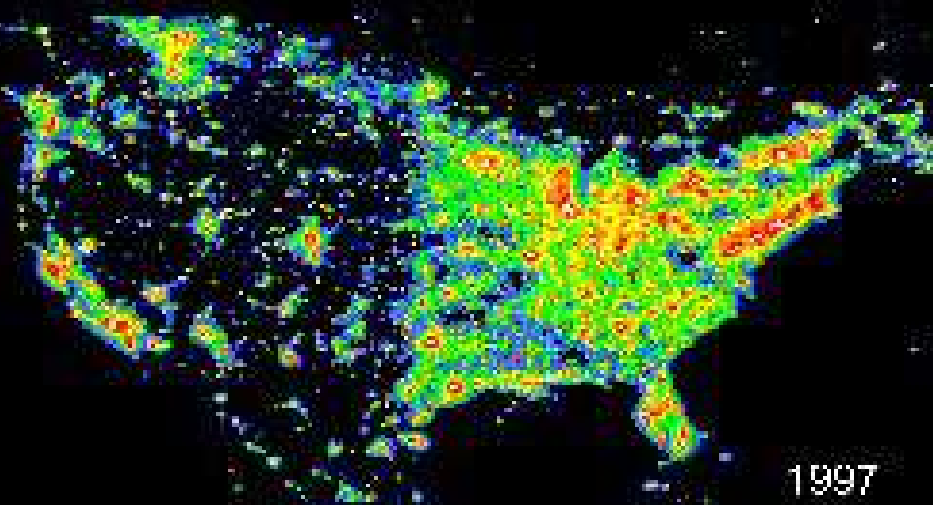
A preliminary picture of the growth from 1950 to 2025



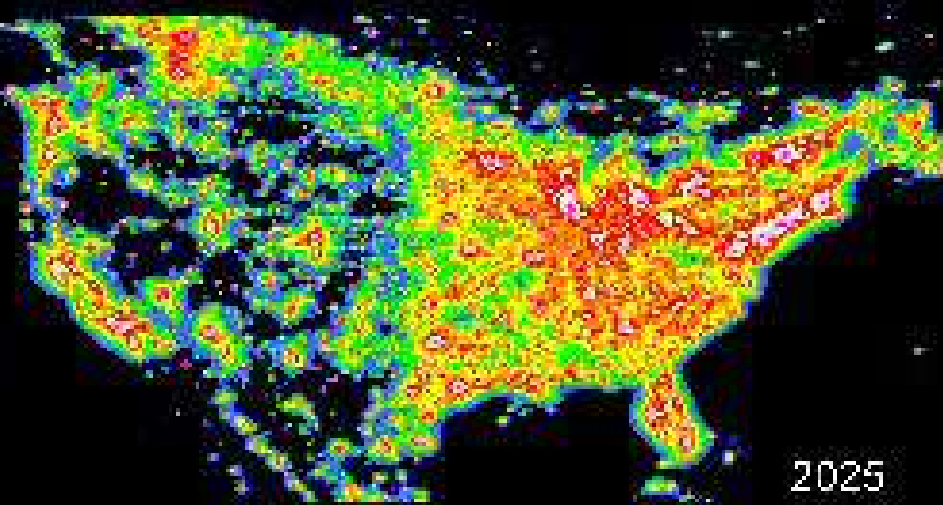
Late '50



Middle '70



1997



2025

# Theme 4: Movement

How do people, goods and ideas move from place to place?





# ***Movement in PA***



# Theme 5: Regions

- A region is a group of places that share common features.

Climate regions- have same climate

Political regions- same type of govern.

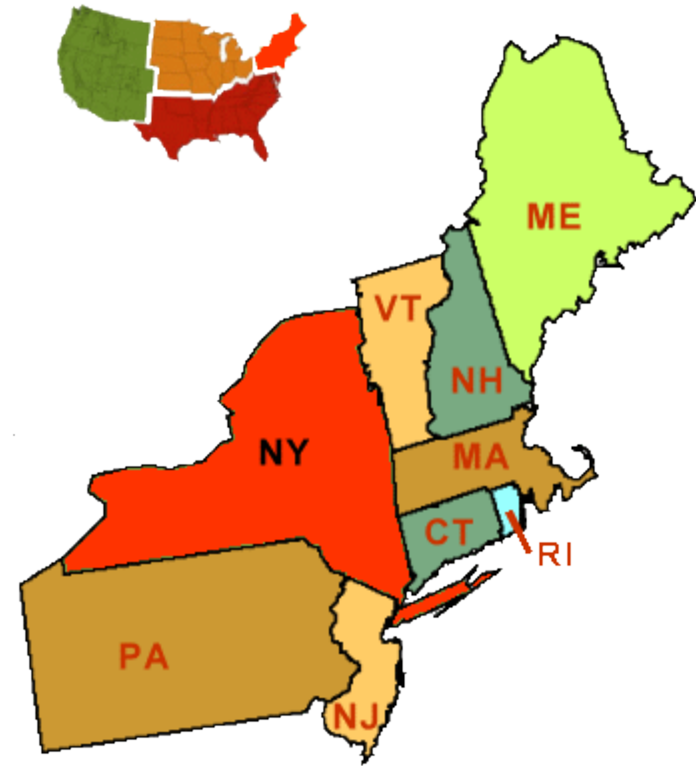
Cultural regions- same lang. customs, beliefs

Landform regions- have same type of land

(used to make comparisons)



# Pennsylvania regions



MR. HELP can assist you remember the five themes.

M - Movement

R - Regions

H - Human

E - Environment Interaction

L - Location

P - Place