

Europe's Physical Geography

Ch 11- section 1

Additional notes to outline

Scandinavian Peninsula

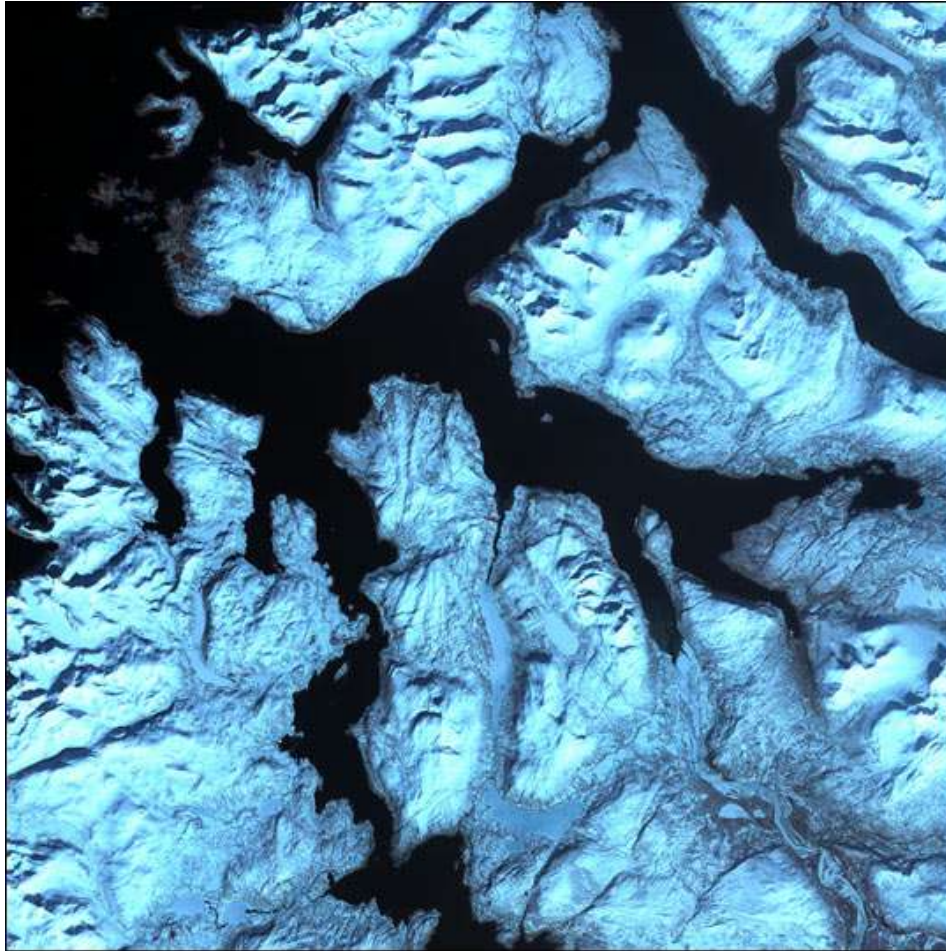


Fjords



Copyright: A.Gjerlow

Fjords continued



Like dark fingers, cold ocean waters reach deeply into the mountainous coastline of northern Norway, defining the fjords for which the country is famous. Flanked by snow capped peaks, some of these ice-sculpted fjords are hundreds of meters deep. This scene was acquired by the ASTER instrument on NASA's Terra satellite on April 17, 2002. Image provided by the [USGS EROS Data Center](#)

Jutland Peninsula



Denmark's Ocean Beach



Denmark's Peaceful Bay



Denmark's Waterfall Beach



Iberian Peninsula



Iberian Plateau



Apennine Peninsula



Apennine Peninsula



Balkan Peninsula



Balkan Peninsula



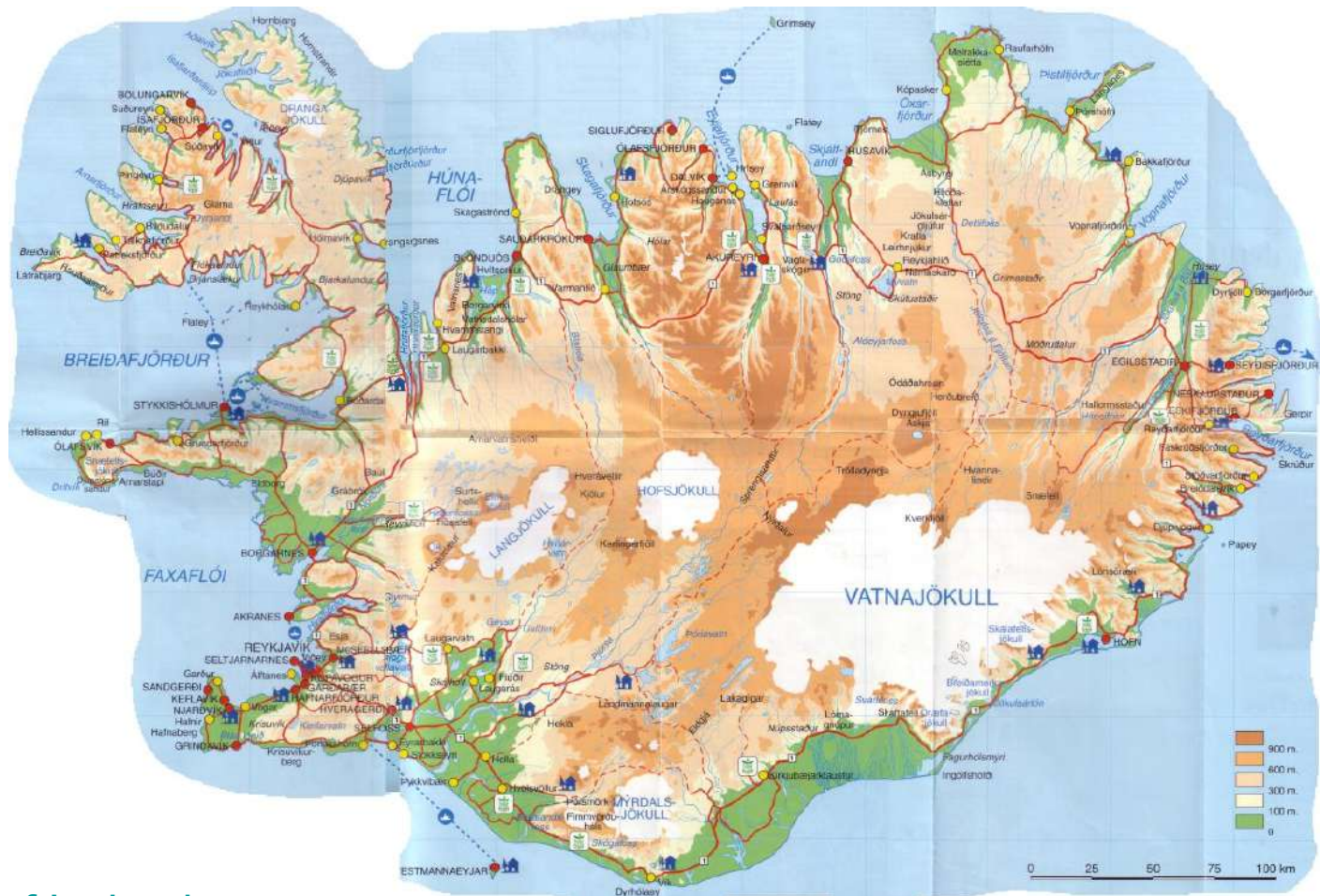
Peat



Atlantic Islands - Iceland



Iceland Physical



[Pictures of Iceland](#)

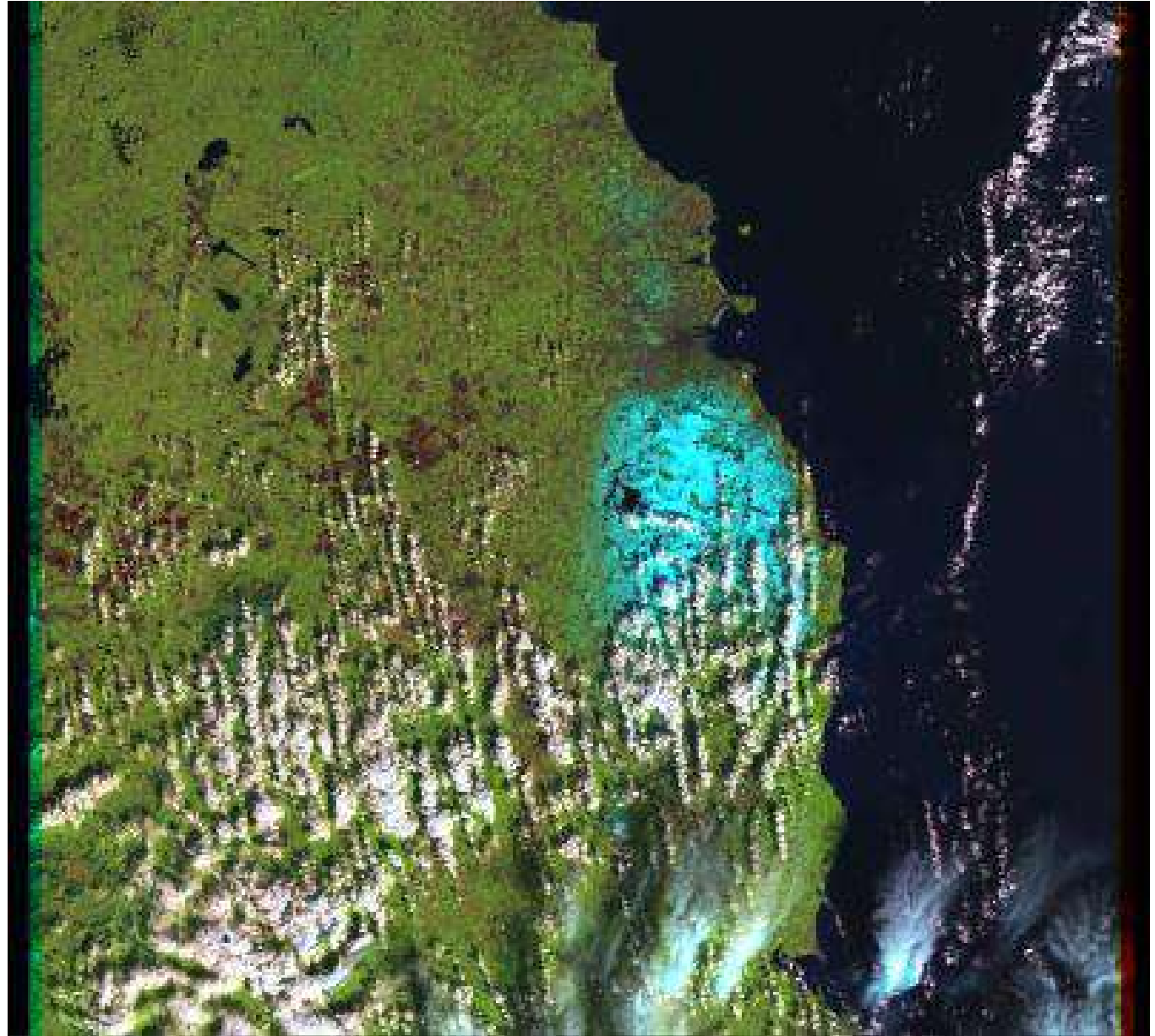
British Isle



British Isle



Emerald Isle



Mediterranean Islands



Corsica



Scandinavian Highlands



Europe Maps at
<http://www.worldatlas.com/>

Alpine Mountain System

- Alps



North European Plain



Europe's Rivers



[World Atlas.com](http://WorldAtlas.com)

Alpine Mountain System

- Carpathian Mts.



