

Cultural Geography- Ethnicity

Ethnicity

- ▶ Definition—
- ▶ Components
 - ▶ Country of familial origin
 - ▶ Language
 - ▶ Religion
 - ▶ History
 - ▶ regionalism
- ▶ Self defined
- ▶ unchanging

Nationality

- ▶ Self identified
- ▶ Similar to ethnicity with self-governance component
- ▶ Foundation of nation states

Race

- ▶ Cultural construct
- ▶ Tracked on census figures
- ▶ Link to ethnicity?
- ▶ Based on:
 - ▶ Skin pigmentation
 - ▶ Physical features
 - ▶ Genetic similarities? (history on construct versus genetic testing)

Definitions reveal focus and bias....

Ethnicities in Chicago

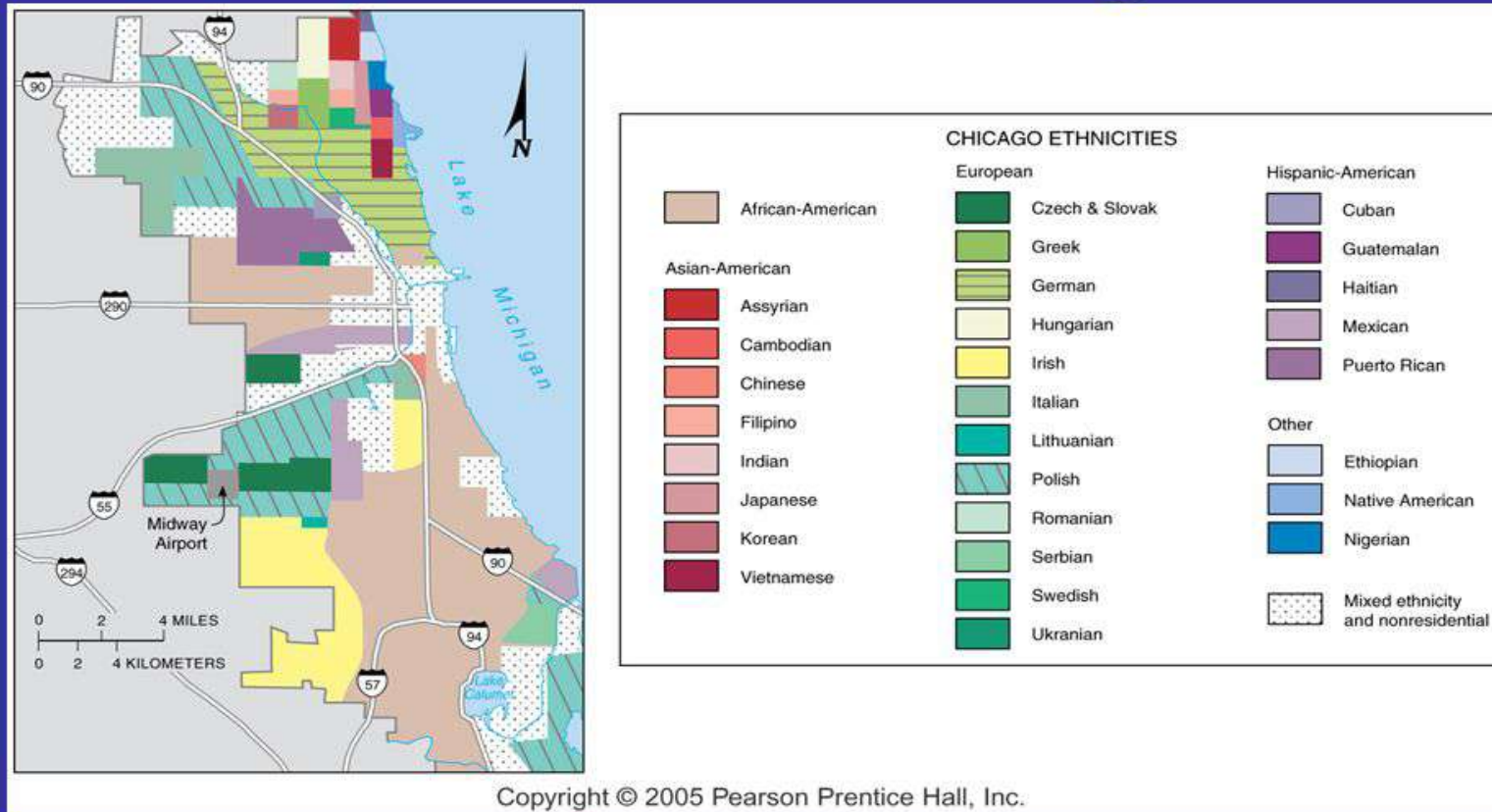


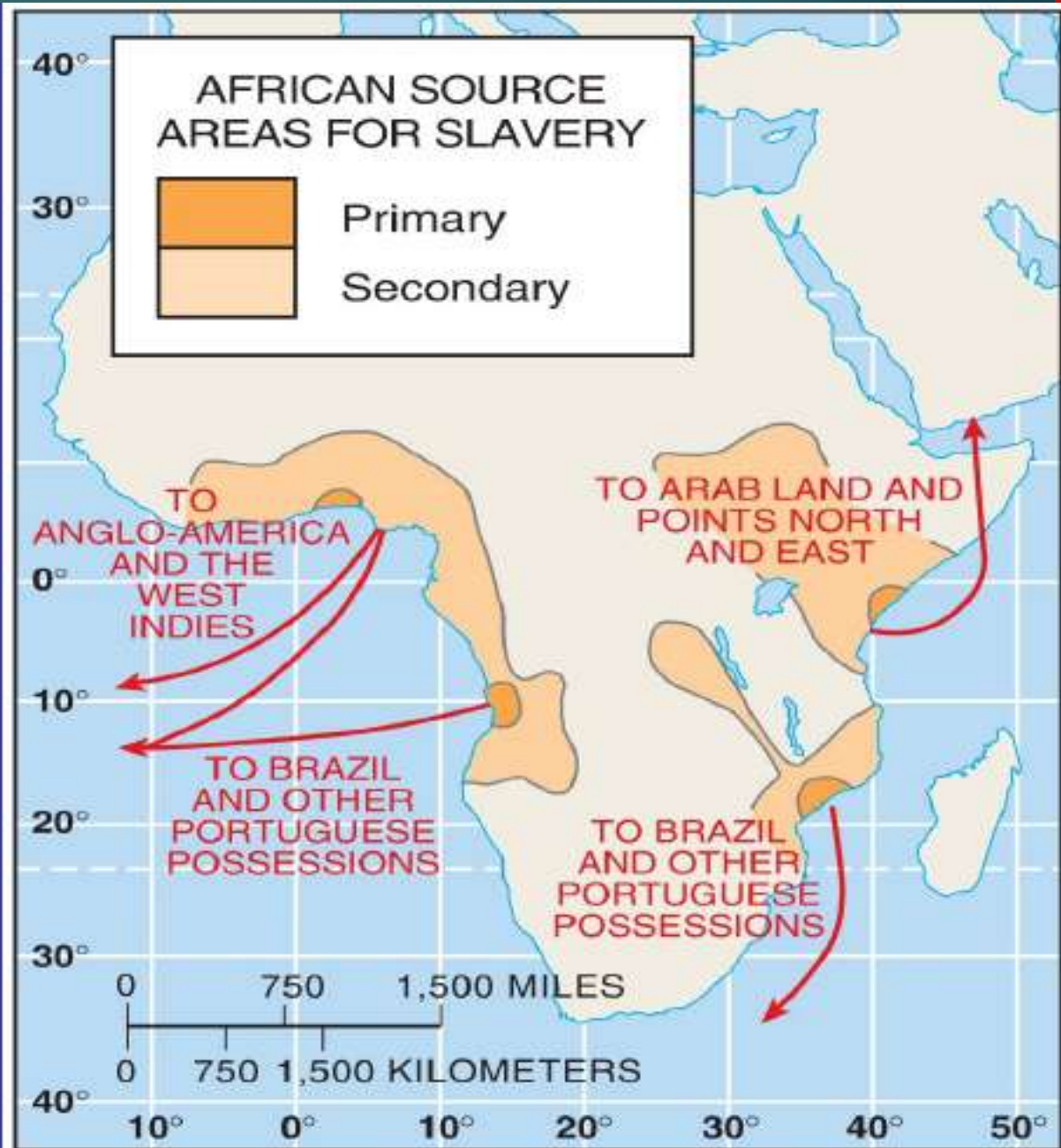
Fig. 7-5: African Americans, Hispanic Americans, Asian Americans, and European Americans are clustered in different areas of the city.

Slavery Source Areas:

Europeans:
Slaves mainly from the Western coast of Africa.

Arabs & others:

Also obtained slaves from Eastern Africa.



Ethnicities in Los Angeles

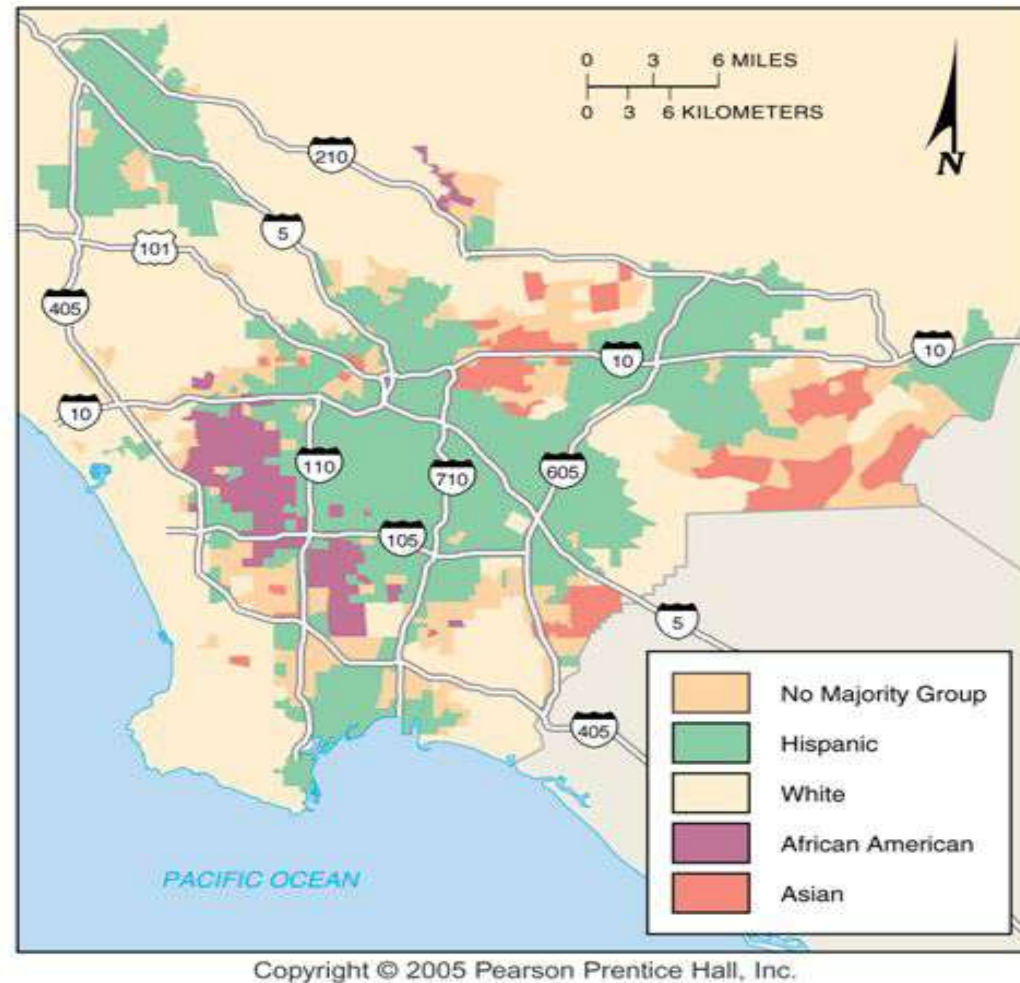


Fig. 7-6: Hispanic, white, African American, and Asian areas in and around Los Angeles.

Human geographers are concerned with:

- ▶ Where are ethnic groups distributed across space?
- ▶ Why did groups settle into specific regions or patterns?
- ▶ How is an ethnic group tied to a particular place (other than current location)?
- ▶ How do connections to other groups and/or isolation from other groups fit into spatial organization or place?
- ▶ What is distinct/isolated about this group compared to others?

States—multicultural or unicultural

- ▶ Components of “culture” that could be identified
- ▶ Does it matter?
- ▶ Challenges a government may face or may not face in each situation....

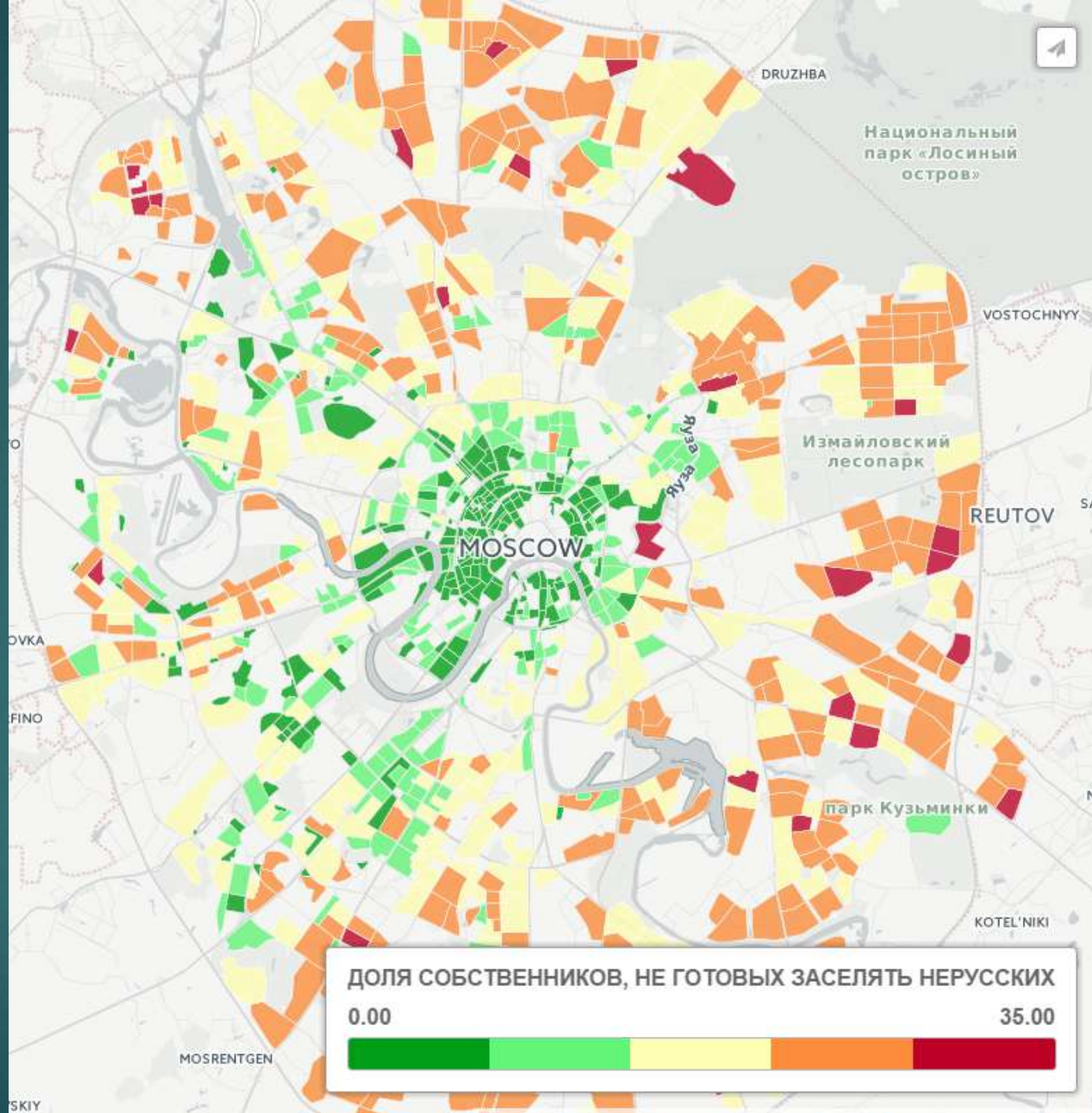
Former Yugoslavia



725086 (100472) 6-92

Serbia and Montenegro have asserted the formation of a joint independent state, but this entity has not been formally recognized as a state by the United States.

Macedonia has proclaimed independent statehood, but has not been formally recognized as a state by the United States.

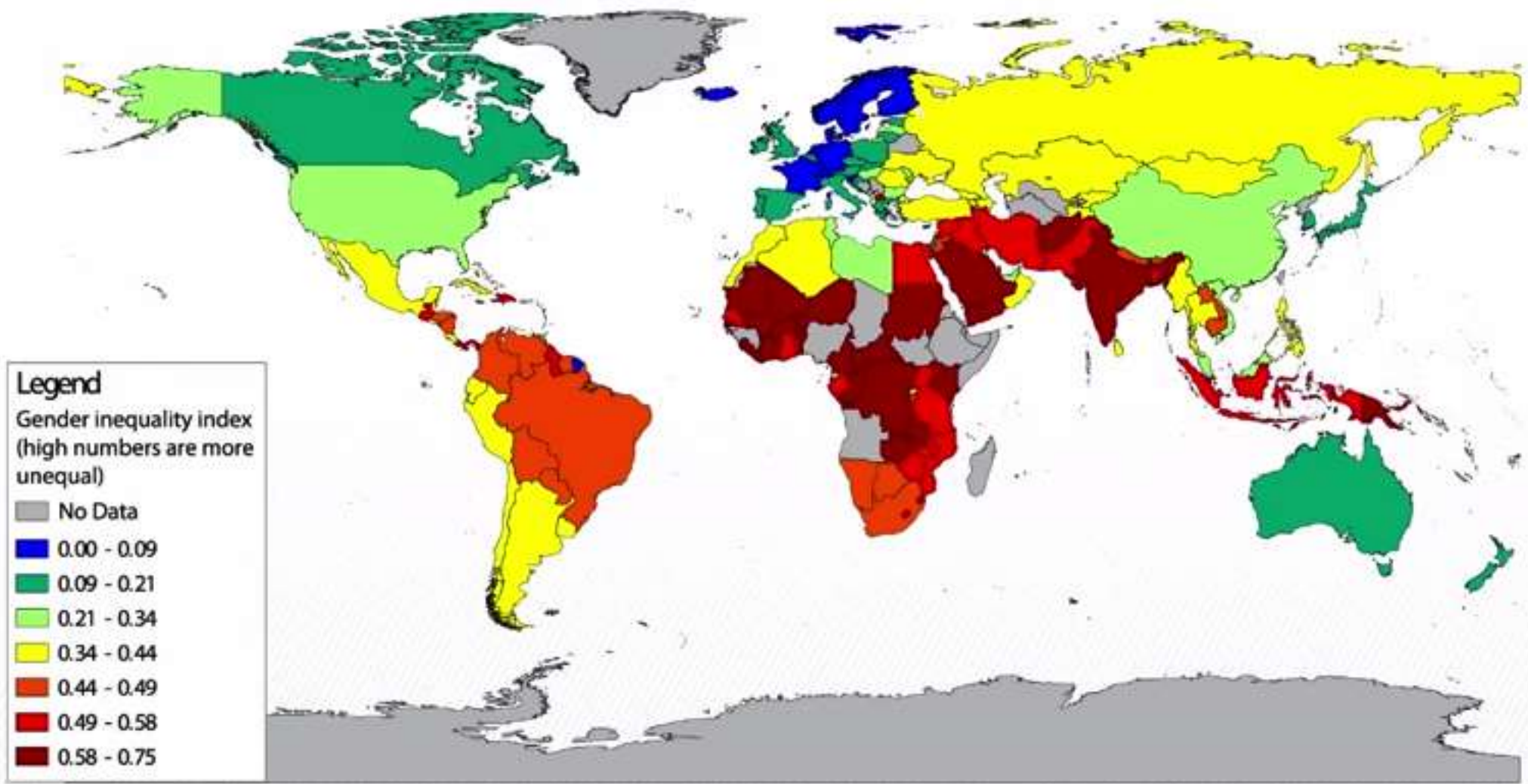


Gendered Space—concept

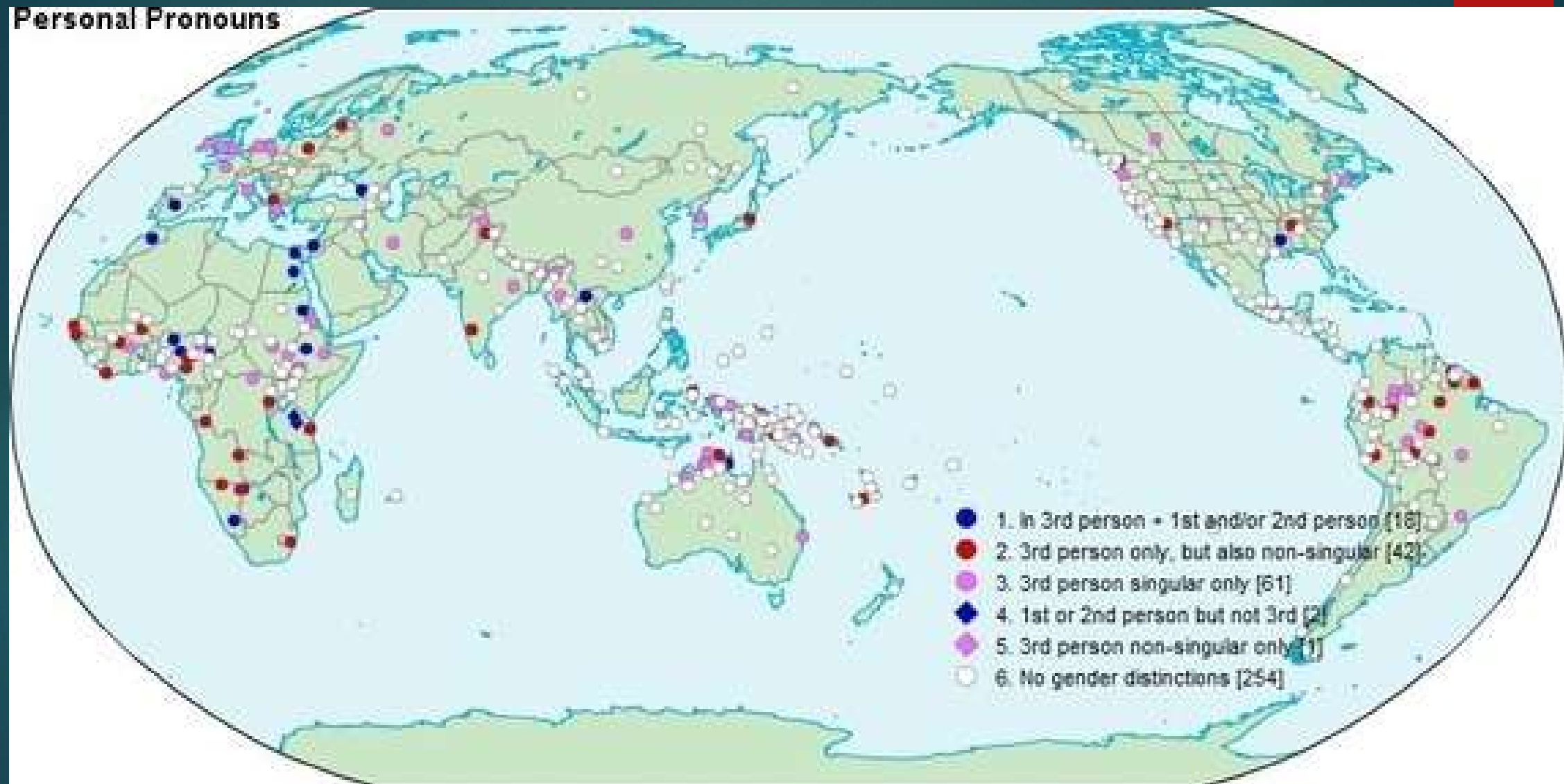
- ▶ Do men and women occupy space differently and if so, why?
- ▶ Why are certain places associated with men and other places associated with women?
 - ▶ World?
 - ▶ Regional?
 - ▶ Local?
 - ▶ Household?
- ▶ How does sexism influence the shape or location of places
- ▶ How do movements of men and women differ in a space (say, a city)?
- ▶ How does gender influence connections between places?

HDI rank	Country	Gender Inequality Index Value 2013	Gender Inequality Index Rank 2013	Maternal Mortality Ratio 2010	Adolescent Birth Rate 2010/2015	Share of seats in parliament 2013
1	Norway	0.068	9	7	7.8	39.6
2	Australia	0.113	19	7	12.1	29.2
5	USA	0.262	47	21	31.0	18.2
6	Germany	0.046	3	7	3.8	32.4
14	UK	0.193	35	12	25.8	22.6
17	Japan	0.138	25	5	5.4	10.8
25	Slovenia	0.021	1	12	0.6	24.6
31	Qatar	0.524	113	7	9.5	0.1
40	United Arab Emirates	0.244	43	12	27.6	17.5
49	Argentina	0.381	74	77	54.4	37.7
55	Libya	0.215	40	58	2.5	16.5
57	Russia	0.314	52	34	25.7	12.1
62	Malaysia	0.210	39	29	5.7	13.9
79	Brazil	0.441	85	56	70.8	9.6
91	China	0.202	37	37	8.6	23.4
110	Egypt	0.580	130	66	43	2.8
118	South Africa	0.461	94	300	50.9	41.1
135	India	0.563	127	200	32.8	10.9
136	Cambodia	0.505	105	250	44.3	18.1
146	Pakistan	0.563	127	260	27.3	19.7
147	Kenya	0.548	122	360	93.6	19.9
154	Yemen	0.733	152	200	47	0.7
166	Sudan	0.628	140	730	84	24.1
169	Afghanistan	0.705	149	460	86.8	27.6

UNDP Gender Inequality Index



Personal Pronouns



**Percent
agreeing
women
should
tend the
home**

- 0 - 10%
- 11 - 20%
- 21 - 30%
- 31 - 40%

