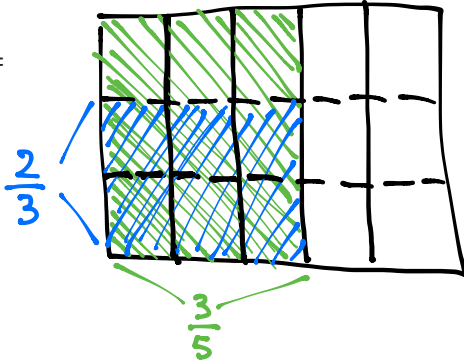


Name _____

Date _____

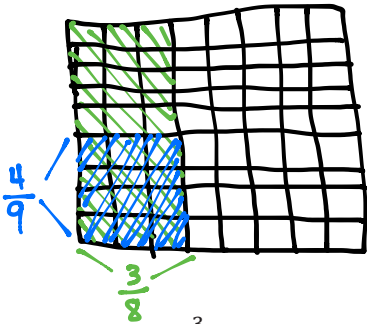
1. Solve. Draw a rectangular fraction model to explain your thinking. Then, write a multiplication sentence.

a. $\frac{2}{3}$ of $\frac{3}{5} =$



$$\frac{2}{3} \text{ of } \frac{3}{5} = \frac{2}{3} \times \frac{3}{5} = \frac{\cancel{2} \times \cancel{3}^1}{\cancel{3}^1 \times 5} = \frac{2}{5}$$

b. $\frac{4}{9} \times \frac{3}{8} =$



$$\frac{4}{9} \times \frac{3}{8} = \frac{4 \times 3}{9 \times 8} = \frac{12}{72} = \frac{1}{6}$$

-OR-

$$\frac{4}{9} \times \frac{3}{8} = \frac{\cancel{4}^1 \times \cancel{3}^1}{\cancel{9}^3 \times \cancel{8}^2} = \frac{1}{6}$$

2. A newspaper's cover page is $\frac{3}{8}$ text, and photographs fill the rest. If $\frac{2}{5}$ of the text is an article about endangered species, what fraction of the cover page is the article about endangered species?

$$\frac{2}{5} \text{ of } \frac{3}{8} = \frac{2}{5} \times \frac{3}{8} = \frac{\cancel{2} \times 3}{5 \times \cancel{8}^4} = \frac{3}{20}$$

$\frac{3}{20}$ of the page is about endangered species.