

Potential Boundary Changes to Balance Enrollment FMHS / GJHS / Fruita 8-9 – Mesa 51 School District



Shannon Bingham, Planner / Facilitator
11/16/20

The Challenge

- Grand Junction High School and Fruita-Monument High School populations have diverged in size and new housing growth in Fruita is more widespread than new housing in northwest Grand Junction.
 - GJHS - 1402
 - FMHS / FM89 9th – $1378 + 485 = 1863$
- Even during the pandemic, housing growth has continued in Fruita, the Redlands and Northwest Grand Junction, but
- Housing growth has been more concentrated in Fruita and the Redlands



The Challenge (continued)

- Relative school sizes among the three Mesa 51 full-sized high school buildings (Palisade High was constructed smaller - includes the IB curriculum)
 - Enrollment at GJHS this fall was lower
 - (1402 total, average grade size 350)
 - Central HS (1610 total, average grade size 403)
 - FMHS (1378 total, average grade size 460)
- GJHS average grade sizes are becoming smaller than Central HS and FMHS
 - Fruita-Monument – 460
 - Central – 403
 - Grand Junction - 350



The Challenge (continued)

- High school boundary changes have been discussed historically to ensure that all three high schools have:
 - Similar enrollment
 - Similar course offerings and
 - Similar resource levels
- School boundaries have been unchanged for decades other than when new buildings have activated



Process

- The Board of Education has requested that stakeholders consider relatively small, phased school boundary changes in a few areas
- High school faculty have been involved in conversations and data awareness
- No decisions have been made
- Virtual parent meetings and a **survey** will help guide Board decision
- School Board will consider stakeholder input and make a decision in January

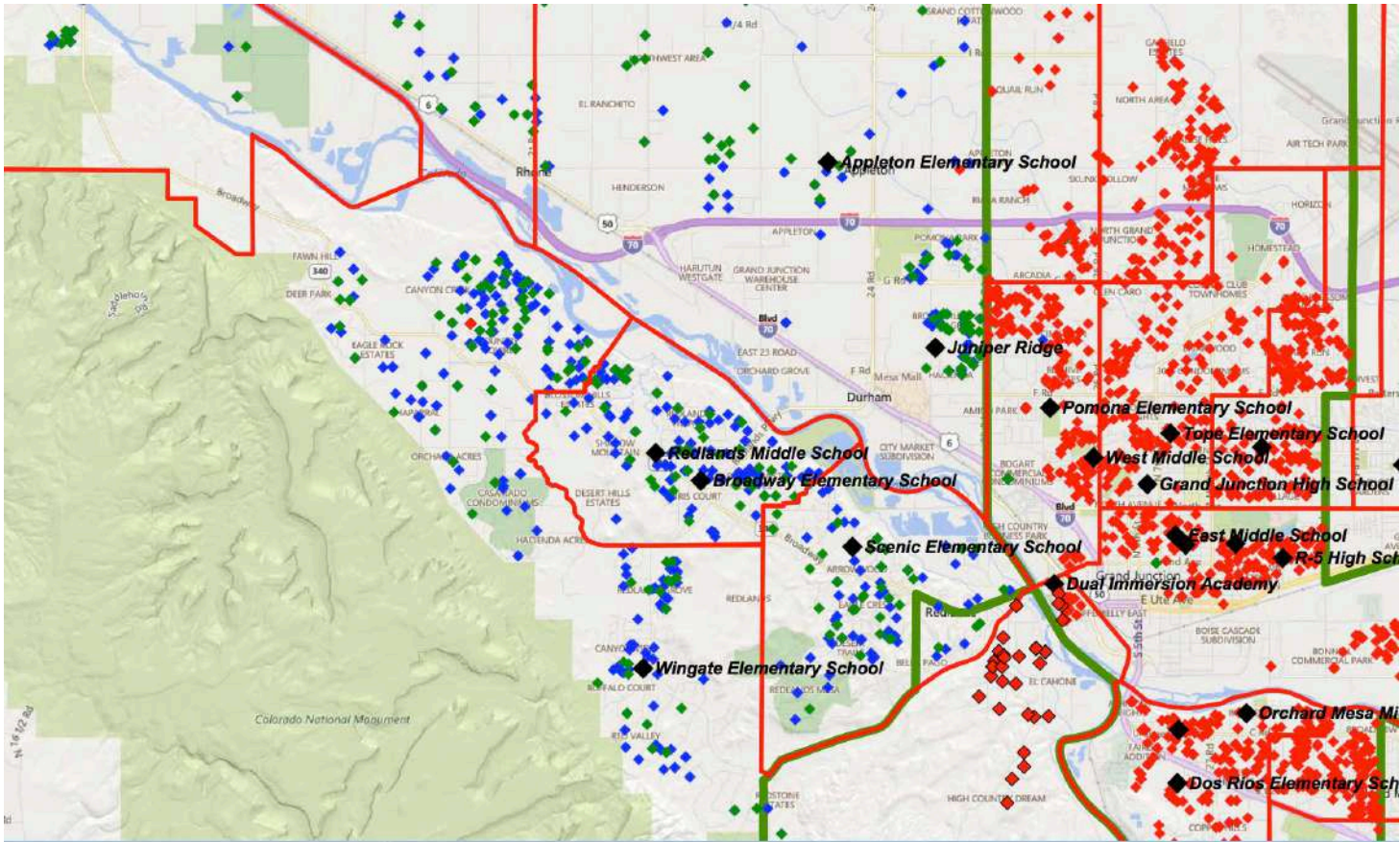


Timing

- **GJHS** to be replaced by a new facility
- Eventual Conversion of **FMHS** to 4-year HS and conversion of **Fruita 8/9** to its designed MS configuration depend upon further classroom expansion at **FMHS**
- Boundary changes would be phased-in over four years
- Choice and pandemic effects will continue to influence enrollment

Overall High School Student Distribution – Redlands / Grand Junction

- GJHS Students – Shown in Red
- FMHS Students Shown in Blue
- Fruita 8/9 School Students Shown in Green



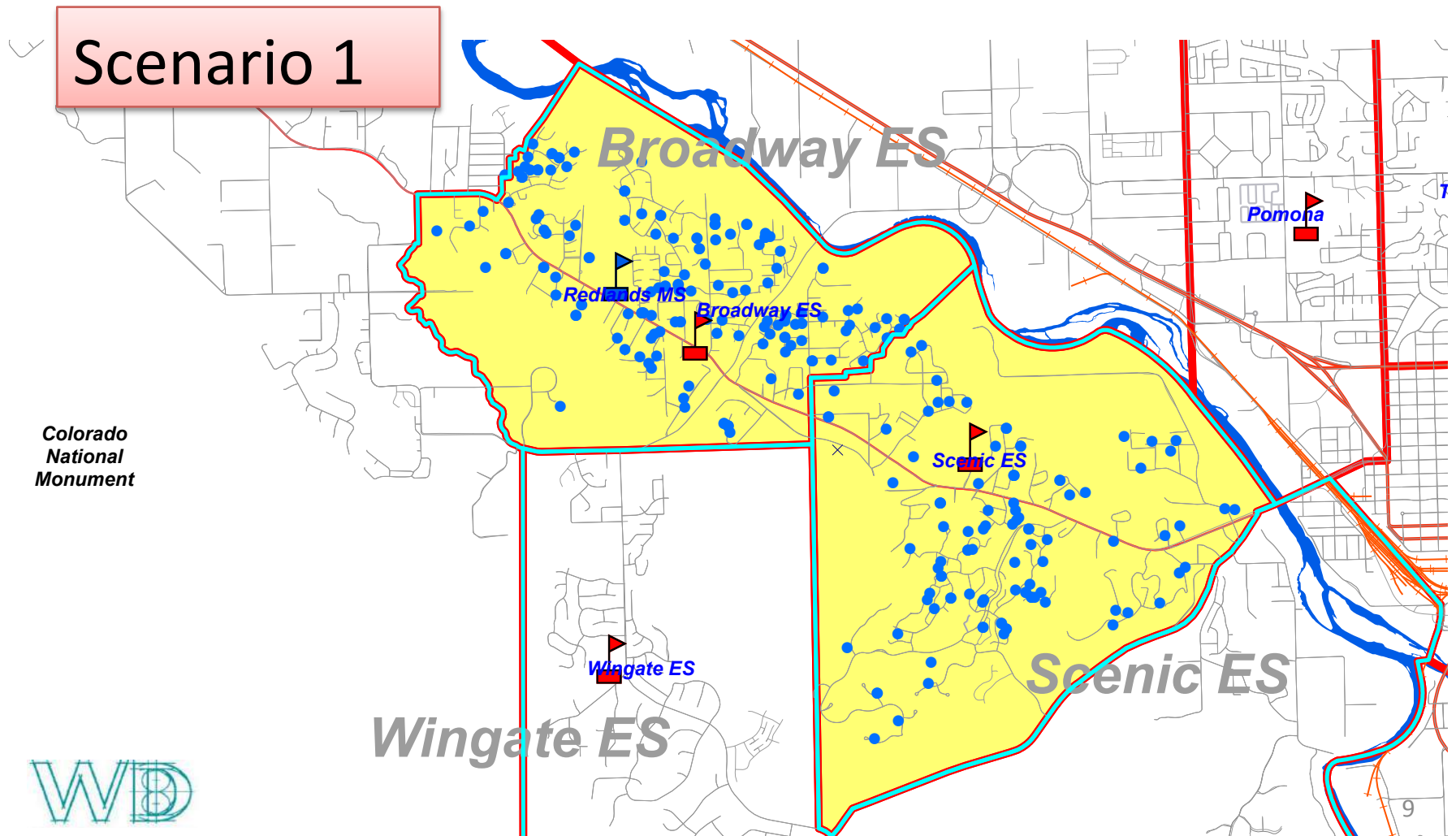
Scenarios

- Scenarios
 - Scenario 1 – Move **FMHS** students in the Scenic Elementary and Broadway Elementary attendance areas to **GJHS**
 - Scenario 2 - Move FMHS students in Scenic, Broadway and the area around and east of Wingate Elementary to **GJHS**
 - Students would continue to feed Redlands MS and a partial feeder might result
 - Affects enrollment at **FMHS** and **Fruita 8/9**, but that affect is eventually replaced by future growth

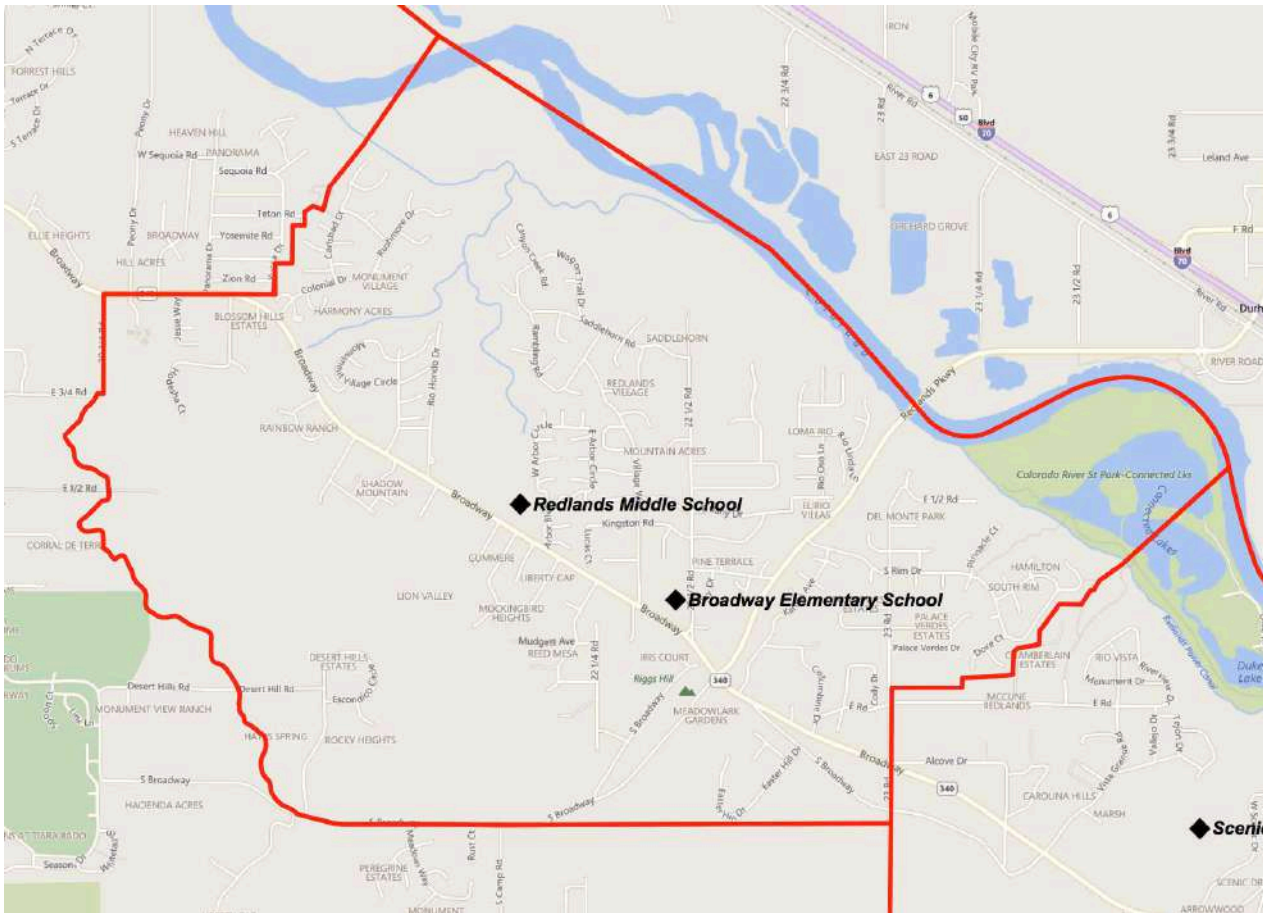


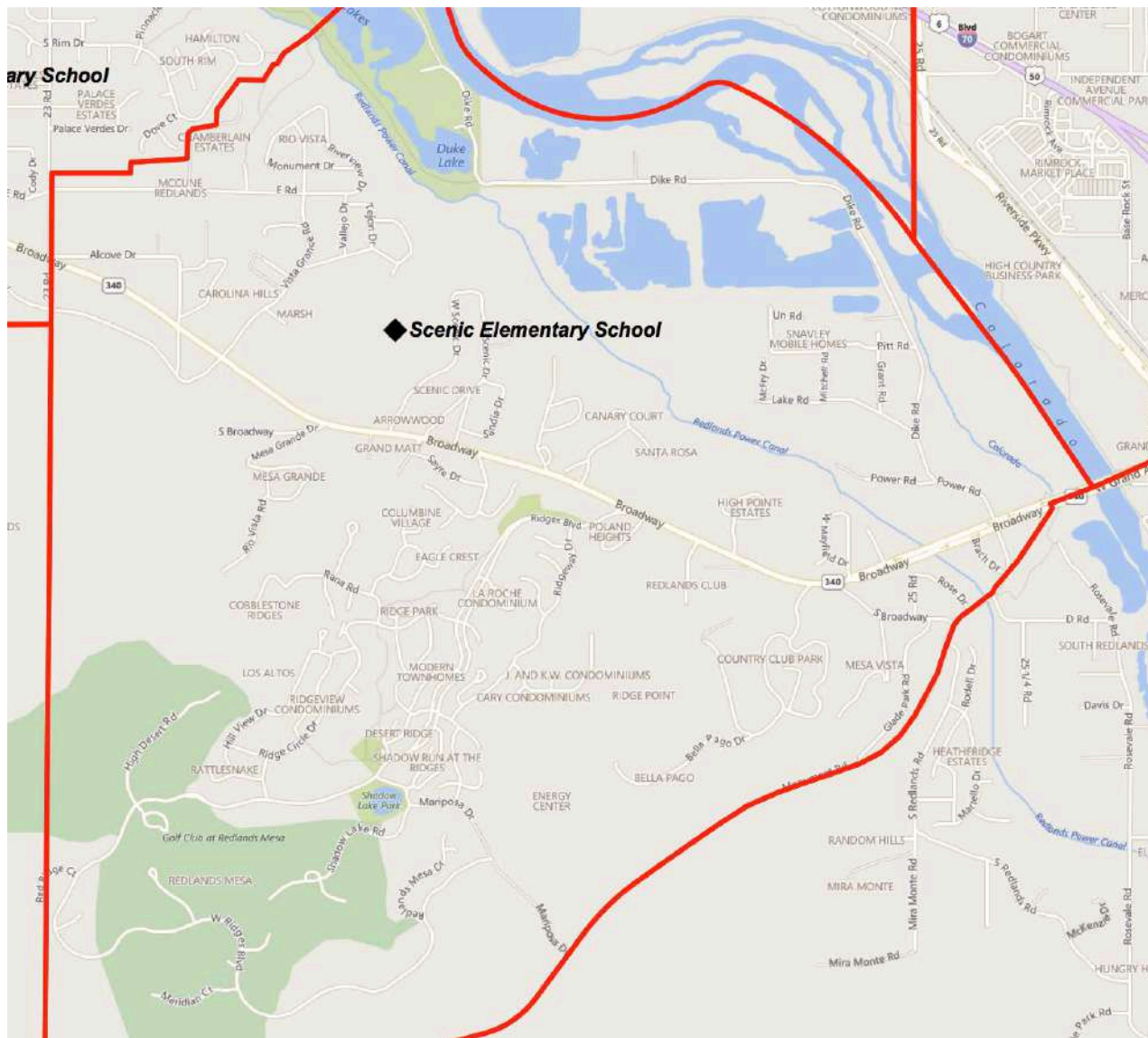
Scenario 1 - Area Proposed for Movement

Scenario 1 - Scenic and Broadway – 185 Students Assuming 70% Compliance



Scenario 1 Streets



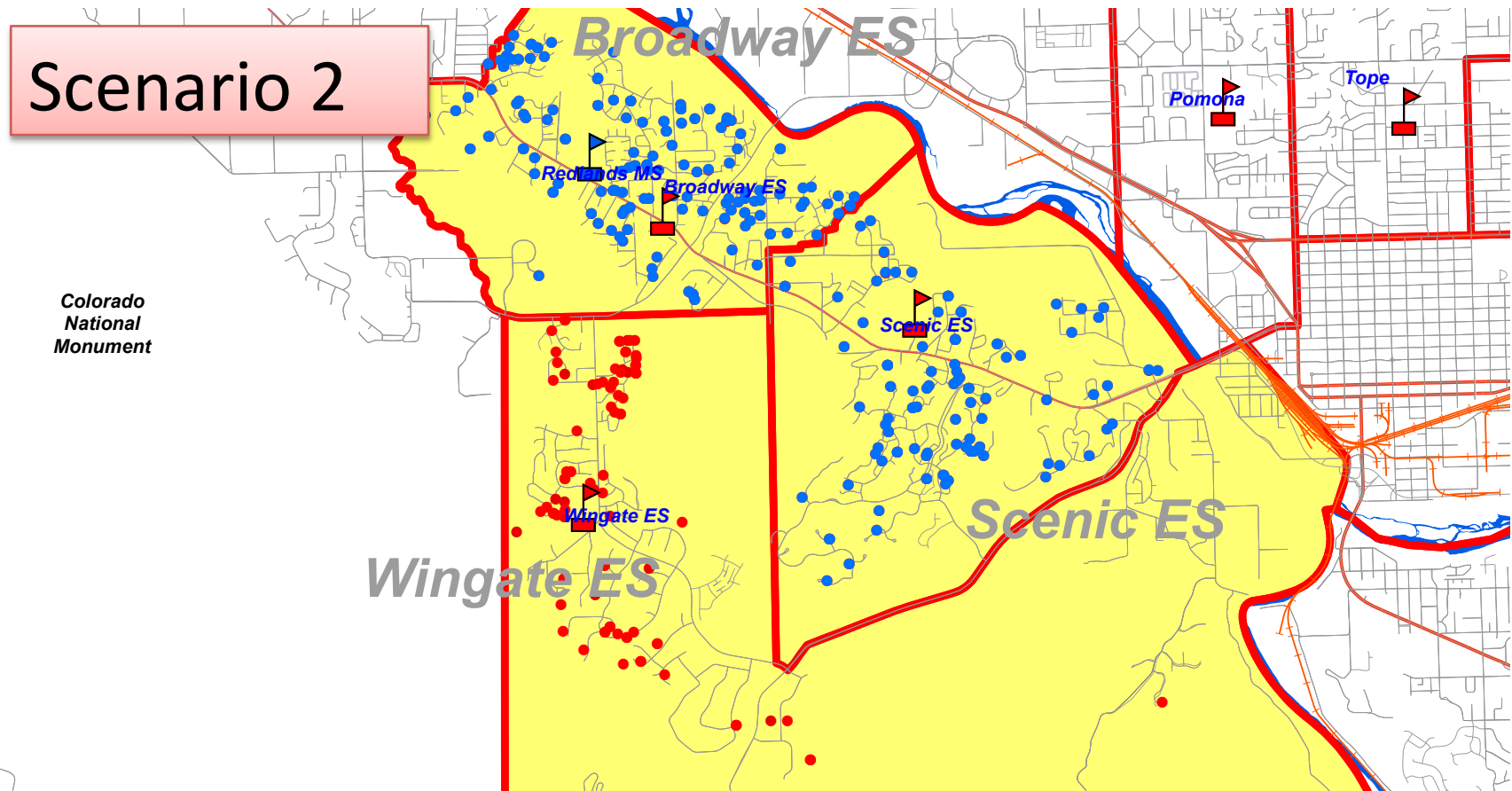


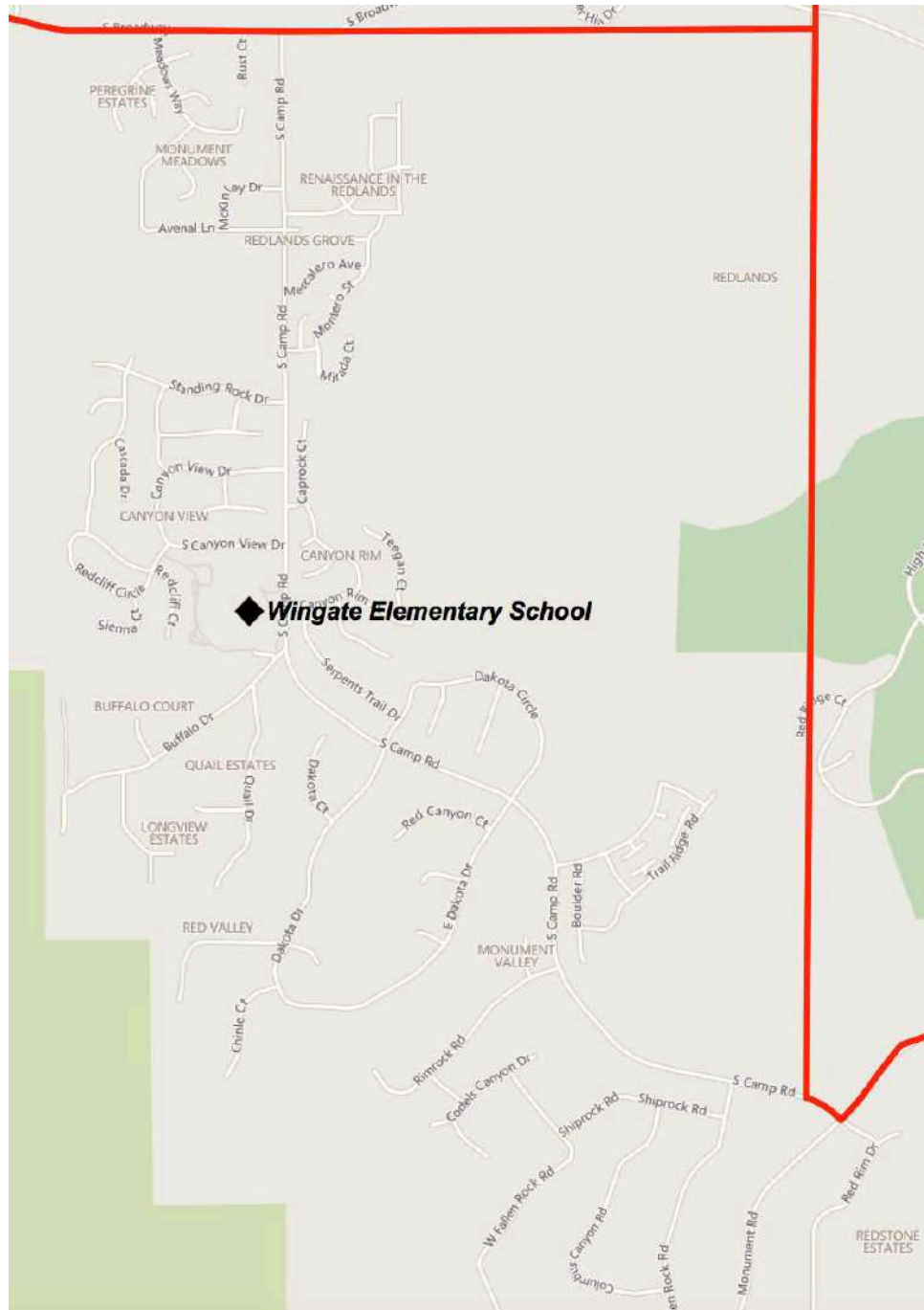
Scenario 1 Streets



Scenario 2 – Area Proposed for Movement

- Scenario 2 - Scenic, Broadway and eastern portion of Wingate – 245 Students
Assuming 70% Compliance





Scenario 2
Streets



Discussion / Questions

- Are you noticing housing growth in the area?
- Do you believe that we should try to balance school size?
- Do you think we should manage school size with boundary changes or portables?
- Do the scenarios make sense to you?
- Please complete the survey online.

