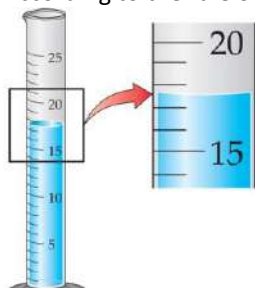


Mr. Fireng

Page 1 of 4

Select the best answer for each questions

1. **Which is the following is true about significant figures?**
 - a. They help scientists easily handle very large numbers or very small numbers
 - b. Significant figures do not change when converting units
 - c. Significant figures indicate the precision of an instrument.
 - d. B and C
2. According to the rule of measured numbers what is the volume of the graduated cylinder?



- a. 15 ml
 - b. 17.0 ml
 - c. 15.25ml
 - d. 17.5 ml
3. **How many significant figures are in the number 0.9050?**
 - a. 3
 - b. 2
 - c. 5
 - d. 4
 4. **How many significant figures are in the number 2201?**
 - a. 3
 - b. 2
 - c. 1
 - d. 4
 5. **What is scientific notation?**
 - a. A way that scientists easily handle very large numbers or very small numbers
 - b. Indicates the precision of an instrument.
 - c. A way express the uncertainty in the measurement
 - d. A positive and negative number
 6. **Express the following in scientific notation: .0099**
 - a. 9.90×10^{-4}
 - b. 9.9×10^{-4}
 - c. 9.9×10^3
 - d. 9.9×10^{-3}
 7. **Express the following in scientific notation: 1800**
 - a. 1.8×10^{-4}
 - b. 1.8×10^3
 - c. 1.8×10^{-2}
 - d. 1.8×10^{-3}



Mr. Fireng

Page 2 of 4

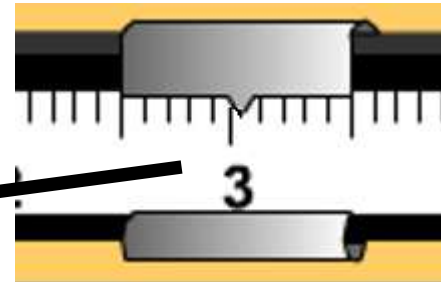
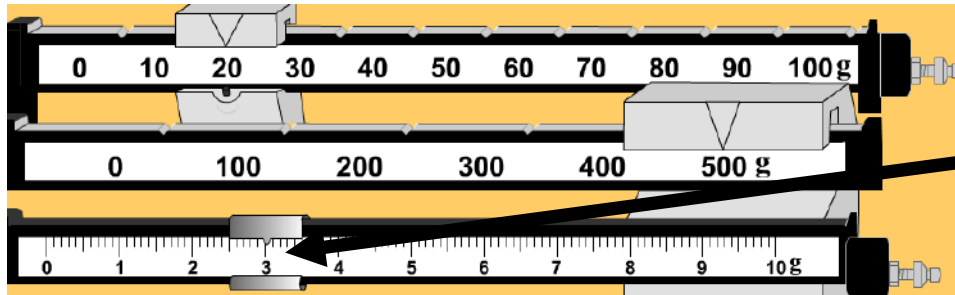
-
8. **Express the following in standard notation: 7.3×10^4**
- 703000
 - 73000
 - .00073
 - 730000
9. **Express the following in standard notation: 2.6×10^{-4}**
- 26000
 - 26666
 - .00026
 - 0002.6
10. **What is the SI Unit for mass?**
- Second
 - Liter
 - Meter
 - Gram
11. **Which below is the correct list of metric prefixes in order of largest to smallest?**
- Kilo Mili Centi Deci BasicUnit Hecto Deko Hecto
 - Kilo Hecto Deko BasicUnit Deci Centi Mili
 - Mili Centi Deci BasicUnit Deko Hecto Kilo
 - King Henry Died Unexpectedly Drinking Chocolate Milk
12. **What is the correct abbreviation for Centimeter**
- cl
 - cm
 - cmm
 - Km
13. **Convert 7.54 Kg to milligrams.**
- 7540000 mg
 - 0.754 mg
 - 0.00754 mg
 - 0.00000754 mg
14. **Convert 633 mL to liters.**
- 0.00633 L
 - 0.000633 L
 - 6.33 L
 - 0.633 L
15. **What is the round metal part of a triple beam balance called, where you place the object to be measured?**
- Thumbscrew
 - Zero Mark
 - Plate
 - Pan
16. **What is the first thing you do when using a triple beam balance?**
- Start with the largest slider. Move the slider until balance tips, move the slider back to the previous position, move to the next slider
 - Continue until the final slider until the balance reads zero
 - Move all three sliders so that they read 'zero'.
 - Read each of the sliders and add their weights together.



17. Which is true about reading a graduated cylinder?

- a. Read at the bottom of the meniscus
- b. Read at eye level
- c. Use clear liquids
- d. A and B

18. Which is the best measurement from the triple beam balance?

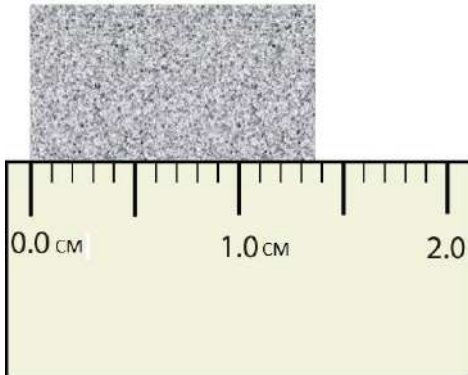


- a. 523.05 g
- b. 253.50 g
- c. 523.5 g
- d. 253 g

19. How many significant figures are there in the best measurement from the triple beam balance above?

- a. 3
- b. 4
- c. 5
- d. 6

20. Which is the most precise measurement from the meter stick in centimeters?



- a. .0135 cm
- b. 1.35 cm
- c. 1.350 cm
- d. 1.3 cm

21. Convert the measurement above into Km

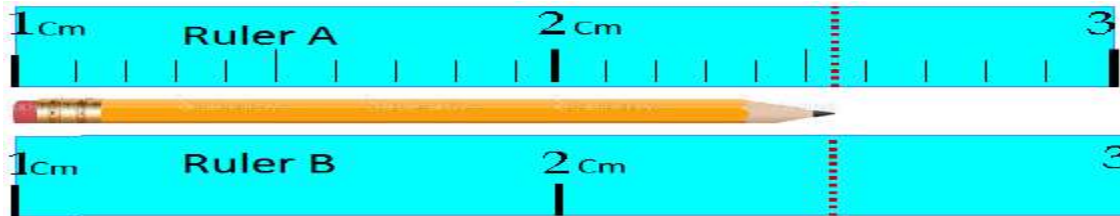
- a. .000013
- b. .00000135
- c. .0000135
- d. 130000.



22. Represent the measurement above in Scientific notation

- a. 1.35×10^{-5}
- b. 1.3×10^5
- c. 1.35×10^5
- d. 1.3×10^{-5}

Use the two rulers measuring the pencil to answer the questions below



23. What is the most accurate measurement of the pencil on Ruler B

- a. 3.45 cm
- b. 2.55 cm
- c. 2.5 cm
- d. 2 cm

24. Which of the below is/are true about the measurement of the pencil on ruler A?

- a. The measurement of the pencil on ruler A is 2.55 cm
- b. The measurement of the pencil on ruler A is 000255 km
- c. The Scientific notation of the measurement of the pencil on ruler A is 2.55×10^5
- d. A and C

25. What is the SI Unit for Temperature?

- a. Fahrenheit (*Hahaha!! Ya right, silly Liberia*)
- b. Celsius
- c. Kelvin
- d. All of the above

Convert the following

26. $50^\circ\text{C} = \underline{\quad? \quad}^\circ\text{F}$

- a. 122
- b. 120
- c. 10
- d. 323

27. $149^\circ\text{F} = \underline{\quad? \quad}^\circ\text{C}$

- a. 300
- b. 65
- c. 100
- d. 365

28. $273^\circ\text{C} = \underline{\quad? \quad}^\circ\text{K}$

- a.
- b.
- c.
- d.