

Newness of the New South

After Reconstruction, both black & white southerners shared an optimistic outlook. Like in other American cities between 1877-1900, they began building railroads, building factories & moving to towns & cities. The factories did not dramatically alter the South's rural economy, & the towns & cities did not make it an urban region. The changes did however:

- Bring political & social turmoil
- Empowered blacks to assert their rights
- Encouraged women to work outside the home & pursue public careers
- Frightened some white men

By 1900, however, Southern white leaders had used the banner of white supremacy to stifle dissent. They removed blacks from political life & constricted their social & economic role. Therefore, the “Newness of the new South was really only found in its economy & not in its social relations

After Reconstruction, new industries absorbed tens of thousands of first-time industrial workers from impoverished rural areas. Southern cities grew faster than those in any other region of the country.

Railroad construction linked these cities to one another & to the rest of the country, giving them increased commercial prominence. Cities extended their influence into the country-side with newspapers, consumer products & new values.

But this urban influence was limited, It did not bring:

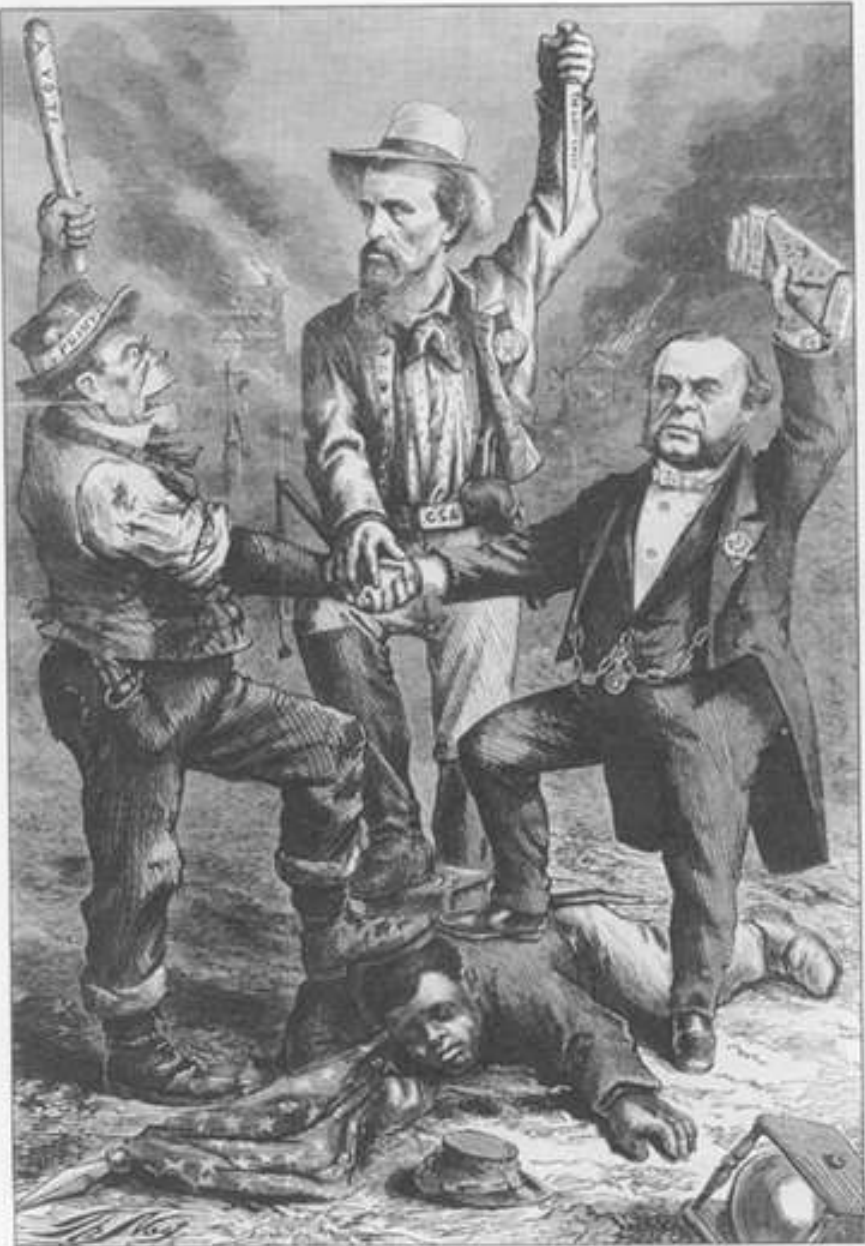
Electricity

Telephones

Public health services or

Public Schools

It did not greatly broaden the rural economy with new jobs & it left the countryside without the daily contact with the outside world



The Democratic party dominated Southern politics after 1877. Democrats purged most black people & some white people from the electoral process & suppressed challenges to their leadership. The result was the emergence by 1900 of the SOLID SOUTH, a period of white Democratic party rule that lasted into the 1950s.

"This Is a White Man's Government."
"We regard the Reconstruction Acts (so called) of Congress as usurpations, and unconstitutional, revolutionary, and void."—Democratic platform.
Thomas Nast, Harper's Weekly, September 5, 1868, Courtesy of The Research Libraries, The New York Public Library, Astor, Lenox and Tilden Foundations.

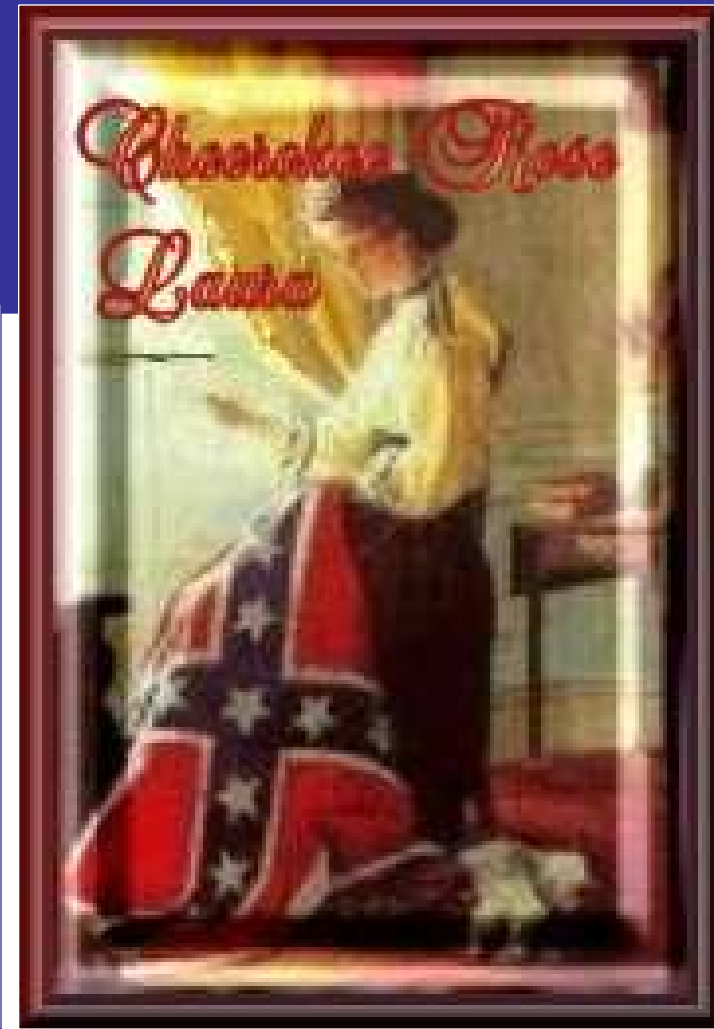
In 1877, Southerners manufactured less than 10% of the nation's total. By 1900 there was significant growth in various industries:

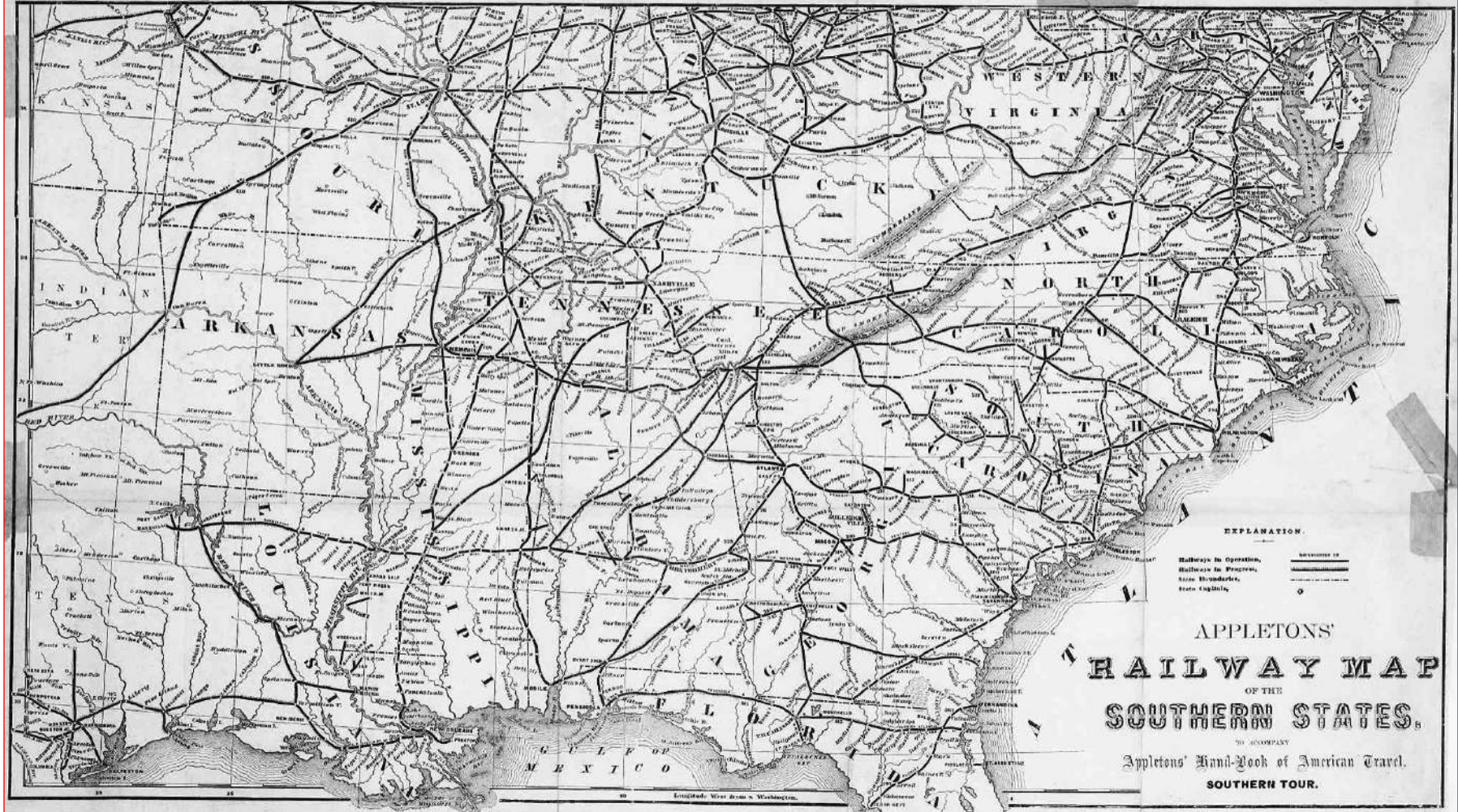
- Iron
- steel
- Textile industries
- The leading tobacco producer in the world
- Furniture manufacturing
- And it was home to Coca-Cola

From 1877 – 1900 most southern women remained at home or on the farm.

Middle-class women were increasingly active in civic work & reform & they began to join Religious organizations such as WCTU (Women's Christian Temperance Union) to attempt to create reform in southern schools & the justice system.

Young white women found work in mills, factories & as servants





Southern railroads connected small Southern farmers to national & international markets.

They opened new areas in the South to settlement & development.

They increased the importance of interior cities at the expense of older cities

The Southern Agrarian Revolt

Cotton dominated Southern agriculture between 1877-1900. Also during this time, rice & tobacco production increased due to steady demand. Since the railroad opened new areas for cultivation in Mississippi & eastern Texas, the price of cotton fell, while the price of fertilizers, agricultural tools, food & most other necessities went up. As a result, the more cotton the farmers grew, the less money they made.

The solution seemed simple, grow less cotton. But in a cash-poor economy, credit ruled. Trapped in debt by low cotton prices & high interest rates, small landowning farmers lost their land in record numbers. Less than 1/3 of white farmers in the South were tenants or sharecroppers just after the Civil War. By the 1890's, nearly half were

By 1875, nearly 250,000 Southern landowners had joined the National Grange of the Patrons of Husbandry, AKA Grange – a national organization of farm owners formed after the Civil War. They did this to fight against the unfair credit dilemma. They also formed the Agricultural Wheel in Arkansas & the Southern Farmers' Alliance, which originated in Texas. These organizations were created to combat the credit & currency issues by getting legislation passed.

The Alliance, however, did not accept black farmers, so blacks formed the Colored Farmers' Alliance in 1886. In 1891, the Colored Alliance attempted a region wide strike over farm wages but was unable to enforce it in the worsening South economy

Southern Populists – Beginning in Kansas in 1890, disillusioned farmers & desperate Alliance leaders merged their organizations with a new national political party & formed the People's Party, soon called the Populist party.

In the South, they challenged the Democratic party, sometimes courting the votes of Republicans, including black voters. But they were ambivalent about blacks because on one hand, black people constituted a potential voting bloc the Populists needed. But on the other hand, the Populists could face attacks from Democrats for undermining white supremacy, which frightened away potential white backers.



REPUBLICAN POLITICIAN—No doubt, remember that the alliance is a strictly non-partisan organization. You must keep out of politics and continue to vote the republican ticket.

KEEPING OUT OF POLITICS

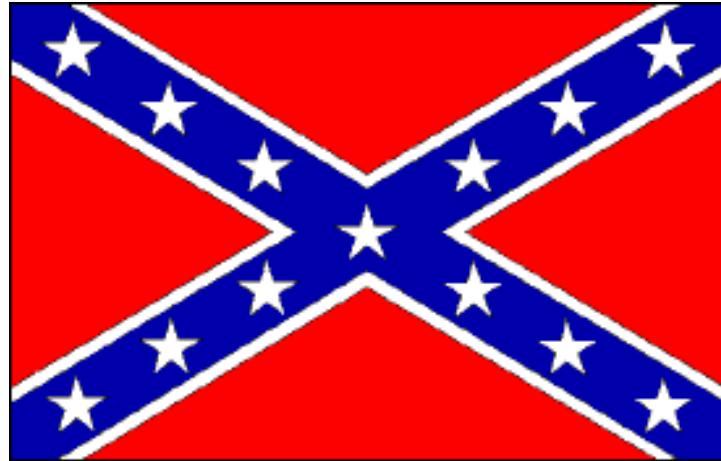
FARMERS' ALLIANCE—'A plague on such your houses.' How can I vote and yet keep out of politics, I guess I shall vote for the party that accepts my principles into its platform.

DEMOCRATIC POLITICIAN—Be sure not and do not drag the alliance into partisan politics. Work and vote for the democratic party and all will be well.

Some Populists such as John B. Rayner, a black man from Texas & Tom Watson from Georgia, spoke to racially mixed audiences calling for “Equal justice & protection under the law to all citizens without reference to race, color or nationality.”

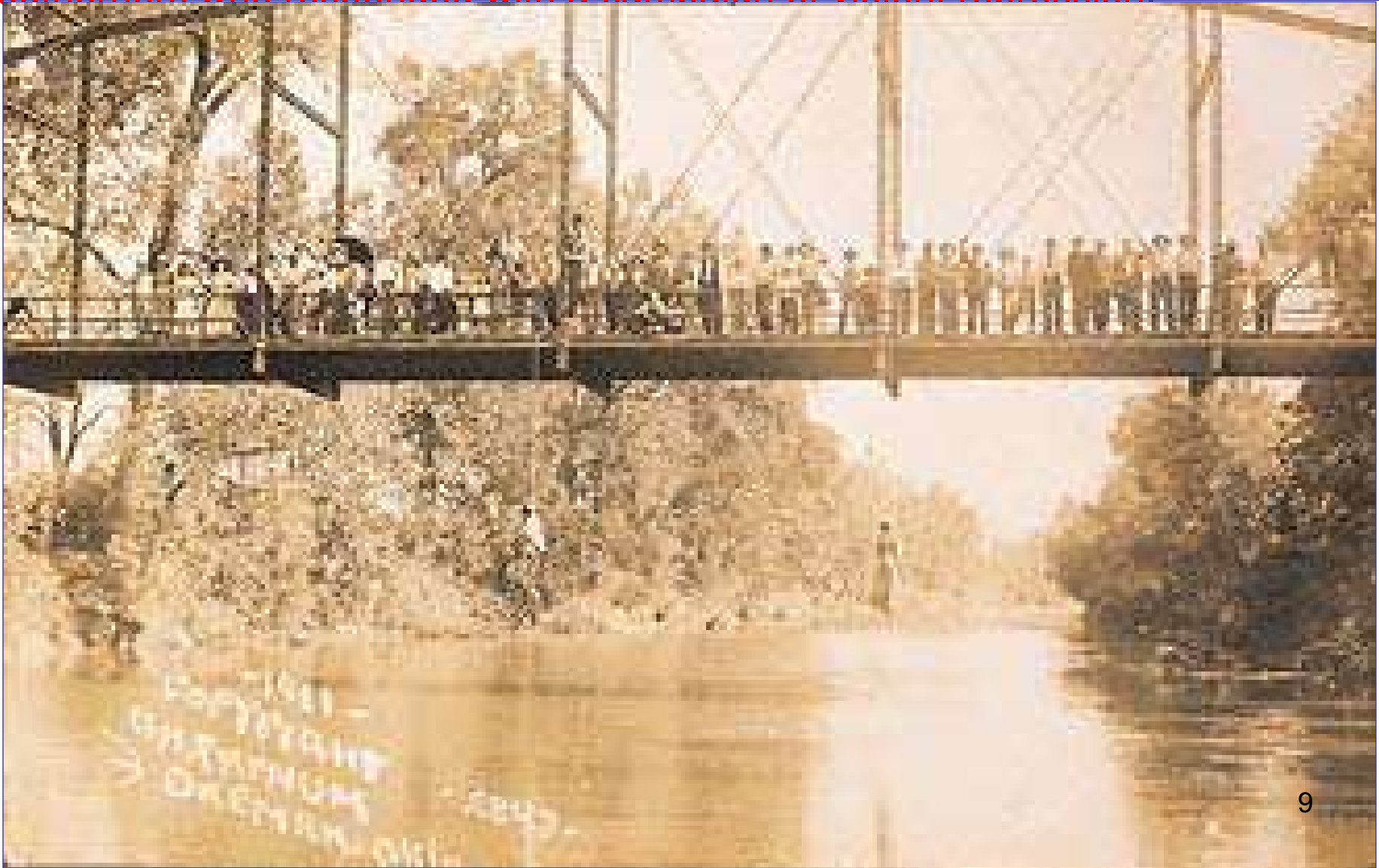
Despite Rayner’s & Watson’s efforts, most black people remained loyal to the Republican party for its role in abolishing slavery & for the few patronage crumbs the party still threw their way.

Blacks also were suspicious about the motives of the Populists

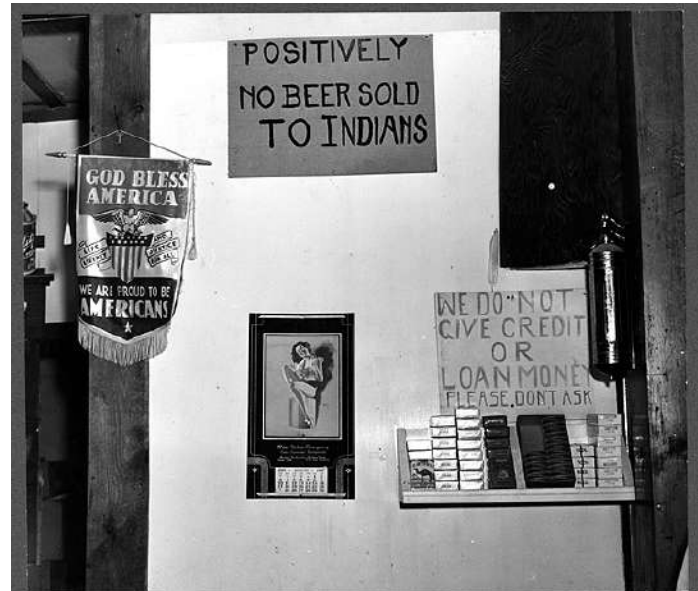


The Populists finished a distant 3rd in the 1893 presidential elections. Ultimately, the Populist party assisted in their own nationwide demise by merging with the Democrats for the presidential election of 1896. In 1898, Democrats surged back into office in North Carolina on the strength of white supremacy campaign & promptly undid the work of the populists.

During the 1880's & 1890's the first black generation raised in freedom had generated a relatively prosperous, educated middle-class intent on challenging the limits of race in the New South. This assertiveness alarmed white Southerners who responded with a campaign of violent repression.



Segregation & Discrimination



Segregation: The separation or isolation of a race, class, or ethnic group by enforced or voluntary residence in a restricted area, by barriers to social intercourse, by separate educational facilities, or by other discriminatory means. To Separate, to tell apart.

Discrimination: The process by which two stimuli differing in some aspect are responded to differently. To distinguish by discerning or exposing differences. To make a distinction.

POST-CIVIL WAR LEGISLATION

- ❖ **1865** 13TH AMENDMENT FREED THE SLAVES
- ❖ **1868** 14TH AMENDMENT EQUAL PROTECTION UNDER THE LAW
- 1870** 15TH AMENDMENT UNIVERSAL MALE SUFFRAGE
- 1883** CIVIL RIGHTS CASES ESTABLISHED A NARROW INTERPRETATION OF THE 14TH AMENDMENT; ALLOWED RACIAL DISCRIMINATION AS LONG AS OUTSIDE OF THE REGULATION OF THE FEDERAL GOVERNMENT
- ❖ **1896** PLESSY v. FERGUSON "SEPARATE BUT EQUAL" FACILITIES ALLOWED, LEGALIZED SEGREGATION
- ❖ **1890s-1950s** "JIM CROW" LAWS MANDATED SEGREGATION AND PREVENTED BLACKS FROM VOTING

1865



13th AMENDMENT

= abolished **SLAVERY**
& **INVOLUNTARY SERVITUDE**

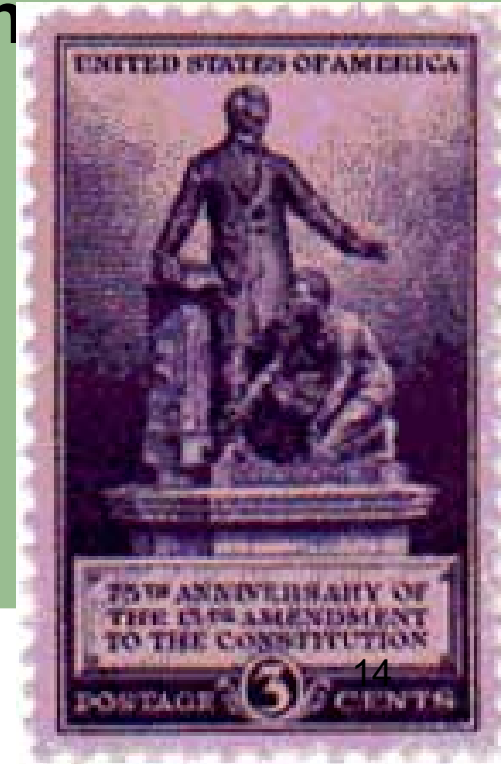


throughout U.S.

13th Amendment - Slavery And Involuntary Servitude

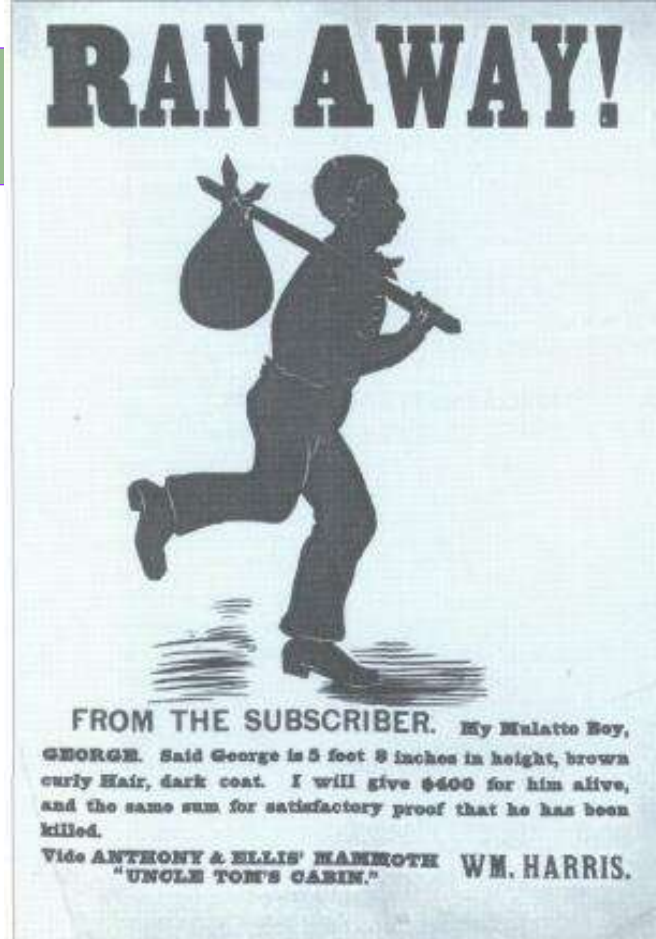
Section 1. Neither slavery nor involuntary servitude, except as a punishment for crime whereof the party shall have been duly convicted, shall exist within the United States, or any place subject to the jurisdiction.

Section 2. Congress shall have power to enforce this article by appropriate legislation.



The Black Codes:

Were passed primarily in the south as a result of the passing of the 13th amendment.



Black Codes of Mississippi, for example, restricted the rights of freed blacks to keep firearms, ammunition and knives and also prevented them from leaving the service of their employer before the expiration of their term of service without good cause.

1868

14th AMENDMENT

= ALL PERSONS

born or naturalized in U.S.

- including former slaves –

are **CITIZENS** of the U.S.

& as "CITIZENS" are thus
guaranteed

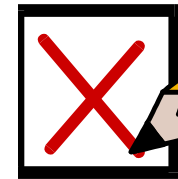
due process & equal protection
under the law.



1870

= 15th AMENDMENT

VOTING RIGHTS



for ALL MALE CITIZENS

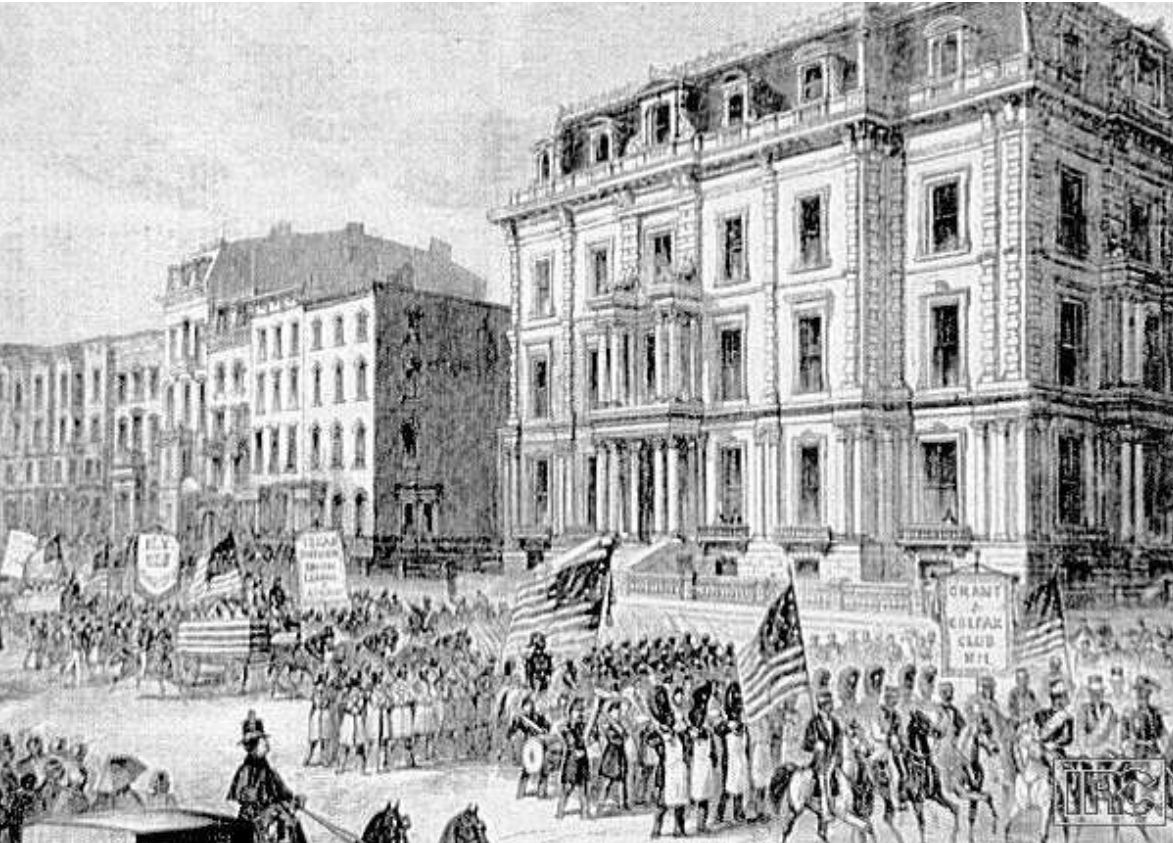
shall NOT be denied

on account of race, color or
previous condition of servitude.



15th AMENDMENT extended

“right to vote”
to AFRICAN AMERICANS



NYC African-American parade for 15th Amendment: the establishment of universal manhood suffrage was the most important accomplishment under the Grant administration; although southern states were required by the reconstruction acts to enfranchise the freedmen, many northern states still prohibited freedmen from voting; women sometimes parted with this movement because men refused to use this opportunity to extend the suffrage to women

KU KLUX KLAN

secret organization used violence to...

prevent **AFRICAN AMERICANS** from voting

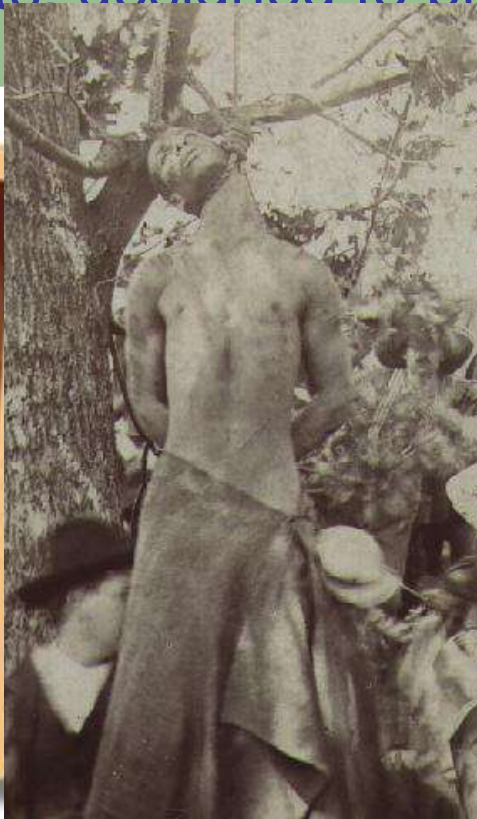




Ku Klux Klan Founder:
Nathan Bedford Forrest

The **Ku Klux Klan** was formed as a social club by a group of Confederate Army veterans in Pulaski, Tennessee around 1865. A Confederate General, Nathan Bedford Forrest, was the Klan's first leader, whose title was the *Grand Wizard*. The group adopted the name Ku Klux Klan from the Greek word *kuklos*, meaning circle, and the English word *clan*.

the Klan took on a more sinister role as the terror arm of the Democratic party in the South. It was made up of white men from all classes of southern society, its members disguised themselves in robes and hoods and intimidated and killed African Americans and white members of the Republican party. The Klan's goal was to reestablish white supremacy by overthrowing the Reconstruction governments. The Congress responded by passing the Enforcement Acts, designed to protect African-American voters.



Some common crimes associated with the KKK are burning of black churches, beatings, hanging a nooses above peoples doors, or burning crosses on non white's lawns. Commonly, the news will speak of white supremacists dragging people to their deaths.



Currently, one large way that they have power to affect people, especially the youths of American is through the Internet. On their site the group makes a point to say that the teachers have been misinformed and wrongly educated about them. "Teachers aren't perfect. They are bound to make mistakes"

In November 1922 the organization grew rapidly & in the 1920s Klansmen were elected to positions of political power. This included state officials in Texas, Oklahoma, Indiana, Oregon and Maine. By 1925 membership reached 4,000,000.



POST-EMANCIPATION SOUTH

inflicted new forms of RACIAL INJUSTICE

on **AFRICAN AMERICANS**.

➡ Denying political rights

➡ Segregated schools

➡ Segregated housing



With **COLLAPSE** of **RECONSTRUCTION** in **SOUTH**

▶ **WHITE GOVERN. OFFICIALS** (Southern Dem.)
regained... **POLITICAL POWER** in
SOUTH

▶ **ALL SOUTHERN STATES** imposed...
NEW VOTING RESTRICTIONS

- ☑ **LITERACY TESTS**
- ☑ **POLL TAXES**
- ☑ **GRANDFATHER CLAUSES**





LITERACY TESTS



Some SOUTHERN STATES required that...
prospective **VOTERS** be **LITERATE**.

To enforce LITERACY REQUIREMENT...
VOTER REGISTRATION OFFICIALS gave test !

● **REGISTRARS** often...

- asked...**BLACKS** more difficult ques's than **WHITES**
- gave... **BLACKS** test in **FOREIGN LANGUAGE**

● **REGISTRARS** could...

- **PASS** or **FAIL APPLICANTS** as they wished !

POLL TAXES



= ANNUAL TAX

had to be paid in order to...

gain **ACCESS** to **VOTING BOOTH**

NOTE – **BLACK** as well as **WHITE SHARECROPPERS**



-who usually lacked **CASH** to pay the **TAX**-

= **unable to VOTE**

GRANDFATHER CLAUSES



SOUTHERN STATES added **CLAUSES** to STATE CONSTITUTIONS in order to...

= REINSTATE WHITE VOTERS who

● failed... **LITERACY TEST**

or

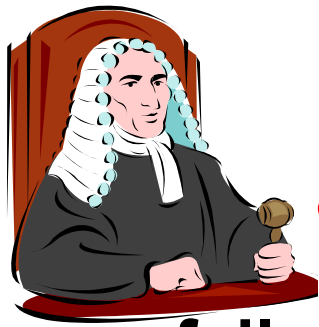
● could NOT pay... **POLL TAX**



= ENTITLED to **VOTE** if...

YOU, your **FATHER** or your **GRANDFATHER** had been eligible to vote before **Jan.1, 1867.**

(PRIOR Jan.1,1867 = freed SLAVES did NOT have RIGHT to VOTE !)



During 1870's & 1880's

SUPREME COURT



failed to... **overturn these LAWS**

Although LAWS did undermine ALL FEDERAL PROTECTIONS
for **AFRICAN AMERICANS' CIVIL RIGHTS,**

SUPREME COURT refused to view NEW STATE LAWS

(Ex; literacy test, poll taxes, grandfather clauses)

as **VIOLATION** of 13TH, 14TH & 15TH AMENDMENTS

because...

= **NEW LAWS** said nothing about **RACE!**



U.S. v. REESE (1876)



SUPREME COURT argued... 15th AMENDMENT
did NOT automatically give RIGHT to VOTE

= 15th AMENDMENT simply made it...



ILLEGAL

to... use a person's RACE
as a reason for...

DENYING the RIGHT to VOTE

EFFECT of VOTING RESTRICTIONS

on

AFRICAN AMERICANS



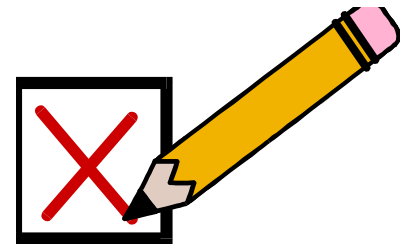
= disenfranchisement

= (NOT able to VOTE!)

of most

AFRICAN AMERICANS

in **SOUTH**





JIM CROW LAWS **= LEGAL CODES**

that established

SYSTEM of
SEGREGATION

in **SOUTH**

Illustration of “Jim Crow”

Stereotypical racist depiction of an African American man, dancing in a field.

The term, “Jim Crow,” would come to represent segregated facilities in SOUTH & the laws that provided for them

EXAMPLES of "JIM CROW" LAWS

- **LUNCH COUNTERS** No persons, firms, or corporations, who or which furnish meals to passengers at station restaurants or station eating houses, in times limited by common carriers of said passengers, shall furnish said meals to white and colored passengers in the same room, or at the same table, or at the same counter. *South Carolina*
- **TEXTBOOKS** Books shall not be interchangeable between the white and colored schools, but shall continue to be used by the race first using them. *North Carolina*
- **PRISONS** The warden shall see that the white convicts shall have separate apartments for both eating and sleeping from the Negro convicts. *Mississippi*
- **PARKS** It shall be unlawful for colored people to frequent any park owned or maintained by the city for the benefit, use and enjoyment of white persons... and unlawful for any white person to frequent any park owned or maintained by the city for the use and benefit of colored persons. *Georgia*
- **BURIAL** The officer in charge shall not bury, or allow to be buried, any colored persons upon ground set apart or used for the burial of white persons. *Georgia*
- **NURSES** No person or corporation shall require any white female nurse to nurse in wards or rooms in hospitals, either public or private, in which Negro men are placed. *Alabama*
- **INTERMARRIAGE** All marriages of white persons with Negroes, Mulattos, Mongolians, or Malaya hereafter contracted in the State of Wyoming are

On June 7, 1892, Homer Adolphe Plessy [1863-1925] engaged in what would become one of the most famous acts of civil disobedience in American history. That afternoon, Plessy, who was bi-racial (1/8th) black, boarded the East Louisiana Railroad Company's Covington-bound train, entered the first-class, "whites only" car, and refused to leave when the conductor told him to "retire to the colored car." Moments later the engineer brought the train to a halt and a detective arrived to take Plessy into his custody, escorting him to a police station on Elysian Fields Avenue. There Plessy was charged formally with violating Louisiana's Separate Car Act of 1890.

Plessy V. Ferguson

The events of the afternoon were not spontaneous. Plessy did not simply decide on the spur of the moment to break an unjust law. He was, instead, handpicked for the task by the *Comité des Citoyens*, an organization of prominent African-American civil libertarians who had already raised the funds necessary for his legal defense.

They chose Plessy because, Medley writes, he was "white enough to gain access to the train and black enough to be arrested for doing so."

Plessy challenged the Louisiana law that required railroad companies to segregate white & black passengers in court. He contended that the law denied him his rights under Louisiana's constitution. The railroad argued that the separate facilities for blacks were just as good as for whites.



Plessy v. Ferguson

1896

SUPREME COURT

ruled that... **SEPARATION of RACES**

- in... **PUBLIC ACCOMODATIONS**
- was... **CONSTITUTIONAL (LEGAL)**
- & did NOT violate... **14th AMENDMENT**

formally legalized... **RACIAL SEGREGATION !**

was not overturned until... **1954** - 58 years later !

in **SUPREME COURT CASE** of...

BROWN v. BOARD of EDUCATION

Plessy v. Ferguson

established principle of...

separate but equal

= ruled...

SOUTHERN RACIAL RELATIONS

for almost 60 years !

Plessy vs. Ferguson rules “separate but equal”

“The only way to get equality is for two people to get the same thing at the same time at the same place.”

Thurgood Marshall

SEGREGATION

1) Despite constitutional amendments ending slavery & protecting rights of citizens,

LEGAL & SOCIAL RACIAL SEGREGATION

existed in **SOUTH** for almost 100 years after CIVIL WAR !

STATES' RIGHTS ”

2) Concept of “

JIM CROW LAWS

= protected...

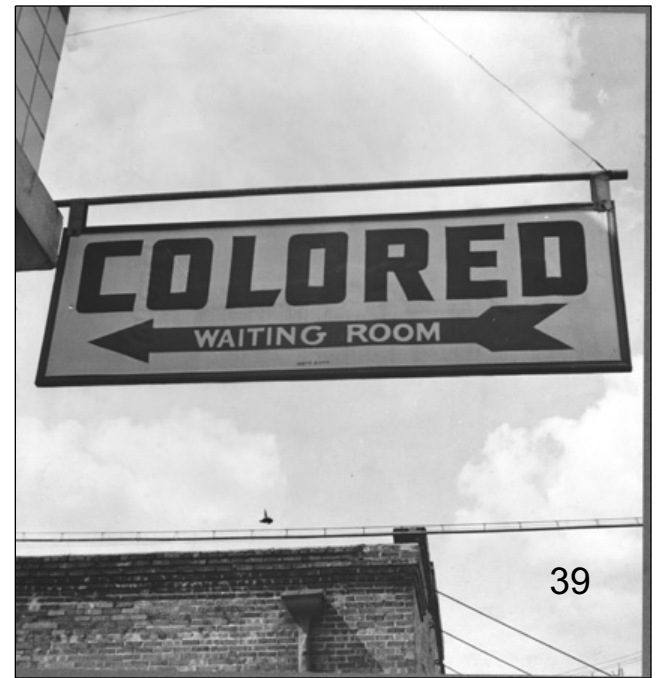
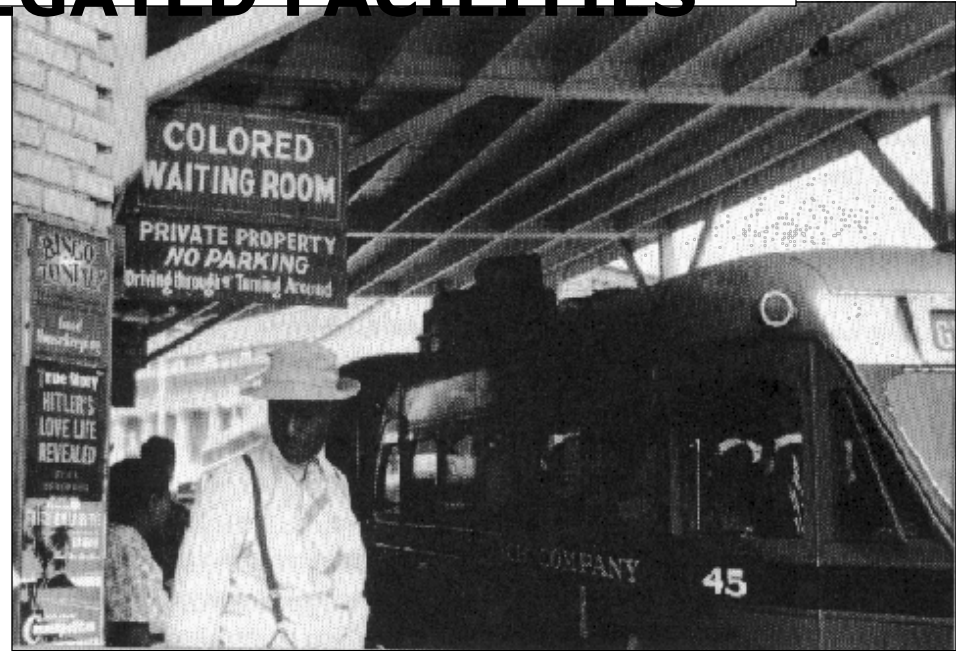
FEDERAL action

= discouraged...

STATE DISCRIMINATION

against...

EXAMPLES OF SEGREGATED FACILITIES



NATIONAL ASSOCIATION FOR THE ADVANCEMENT OF COLORED PEOPLE (NAACP)

- FOUNDED IN 1909 BY IDA B. WELLS, W.E.B. DuBOIS, HENRY MOSCOWITZ, MARY WHITE OVINGTON, OSWALD GARRISON VILLARD, AND WILLIAM ENGLISH WALLING
- PROVIDED LEGAL AID AND OTHER SUPPORT FOR PEOPLE WHO WERE BEING TREATED UNFAIRLY UNDER THE LAW
- STRATEGY WAS TO ERADICATE INSTITUTIONALIZED RACISM AND FULFILL THE 14TH AMENDMENT WHICH GUARANTEED EQUAL TREATMENT UNDER THE LAW
- TARGETED EDUCATION AS THE MAIN BATTLEFIELD FOR EQUAL TREATMENT

**NAACP
MEETING
1929**



AFRICAN AMERICANS, 1890-1915

- 1) LEADERS disagreed on PRINCIPAL STRATEGY for attaining equal rights
- 2) VOTING RIGHTS previously gained, through 13th, 14th & 15th AMENDMENTS, were DENIED through changes in STATE laws & constitutions
- 3) Many African Americans were lynched & attacked by mobs in both NORTH & SOUTH

Blacks faced not only formal discrimination but also informal rules & customs, called racial etiquette, that regulated relationships between whites & blacks. Usually these customs belittled & humiliated blacks. They would be required to show deference to whites, including children, & endure humiliating treatment.

For example, blacks & whites never shook hands, since shaking hands would have implied equality. Blacks had to yield the sidewalk to white pedestrians & black men always had to remove their hats for whites.

Blacks who did not follow the racial etiquette could face severe punishment. Minor breaches might be overlooked or met with a mild reprimand, but serious violations could provoke serious & often violent response. If the offended white person complained to the black person's employer, the employee could lose his or her job. All too often, blacks who were accused of violating the etiquette were lynched.



IDA B. WELLS

**AFRICAN
AMERICAN
newspaper
reporter**

= fought for...

**EQUALITY
&**

crusaded against...

lynching



Wells was born in Holly Springs, Mississippi, in 1862. She was educated in a school run by white missionaries called Rust College. When her parents died of yellow fever in 1878, she was left to raise her six siblings. She eventually moved to Memphis, Tennessee, where she got a job teaching in a small town called Woodstock.

While teaching in Memphis public schools, in 1887, Wells began writing for black newspapers using the pen name Iola. She eventually became a full-time journalist and was editor and part-owner of a small, newspaper in Memphis, the *Free Speech and Headlight*. It was while working on this paper in that she began a lifelong campaign against lynching.

In 1892, Wells lost three good friends to a lynching in Memphis. The three men had opened a store called the People's Grocery, that successfully competed with a nearby white-owned store. The competition escalated into violence & the three black store owners were arrested. Later a white mob formed, grabbed the three men from the jail & lynched them.

She went on the attack in editorial after editorial against a practice that treated blacks as less than human. She was disgusted that lynchings had become a public spectacle and she began to investigate false accusations of rape against black men that were used to justify lynchings. When she wrote an editorial that stated that some "rape" cases may be women who preferred black men, her offices were burned and she was exiled.

“Thomas Moss, Calvin McDowell & Lee Stewart had been lynched in Memphis...where no lynching had taken place before... This is what opened my eyes to what lynching really was. An excuse to get rid of Negroes who were acquiring wealth & property & thus keep the race terrorized.” – Ida B. Wells

Note: As Wells continued to denounce the lynching, the local white press in Memphis called for her to be lynched. As a result, she moved to the North where she continued to fight against lynching by writing, lecturing, & organizing for civil rights.

Lynching- Practice whereby a mob--usually several dozen or several hundred persons--takes the law into its own hands in order to injure and kill a person accused of some wrongdoing.

Between 1882 & 1968, 4,743 persons died of lynching, 3,446 of them black men and women. 1291 were white. Statistics do not tell the entire story, however. These were recorded lynchings; others were never reported beyond the community involved. Mobs used especially sadistic tactics when blacks were the prime targets. By the 1890s lynchers increasingly employed burning, torture, & dismemberment to prolong suffering and excite a "festive atmosphere" among the killers & onlookers. White families brought small children to watch, newspapers sometimes carried advance notices, & mobs cut off black victims' fingers, toes, ears, or genitalia as souvenirs.

Lynching had become a ritual of interracial social control & recreation rather than simply a punishment for crime.



Rebecca Felton, a member of the WCTU (Women's CHRISTIAN TEMPERANCE Union) who fought for child-care facilities, sex education, compulsory school attendance & the admission of women to the University of Georgia had no problem with the lynching of black men.

“A thousand times a week if necessary” to preserve the purity of white women.

In 1922, she became the first woman member of the U.S. senate.











They come from all over the U.S. There are hangings, burnings, cuttings and shootings in California, Montana, Nebraska, Illinois, Indiana, New Mexico, Minnesota, Ohio, and from places all over the South.

The victims are not always black, but whether it is three black men hanging from a lamppost in Duluth, Minnesota, Laura Nelson a black woman hanging from a steel bridge in Oklahoma alongside her 14-year-old son, or the charred corpse of a black man dangling somewhere in Georgia or Tennessee or Mississippi, they usually are.

The Dogwood Tree Postcard



SCENE IN SABINE COUNTY, TEXAS, JUNE 15, 1908.

The Dogwood Tree.

This is only the branch of the Dogwood tree;
An emblem of WHITE SUPREMACY.
A lesson once taught in the Pioneer's school,
That this is a land of WHITE MAN'S RULE.
The Red Man once in an early day,
Was told by the Whites to mend his way.
The negro, now, by eternal grace,
Must learn to stay in the negro's place.
In the Sunny South, the Land of the Free,
Let the WHITE SUPREME forever be.
Let this a warning to all negroes be,
Or they'll suffer the fate of the DOGWOOD TREE.

Copyrighted — Pub. by Harkrider Drug Co., Center, Tex.

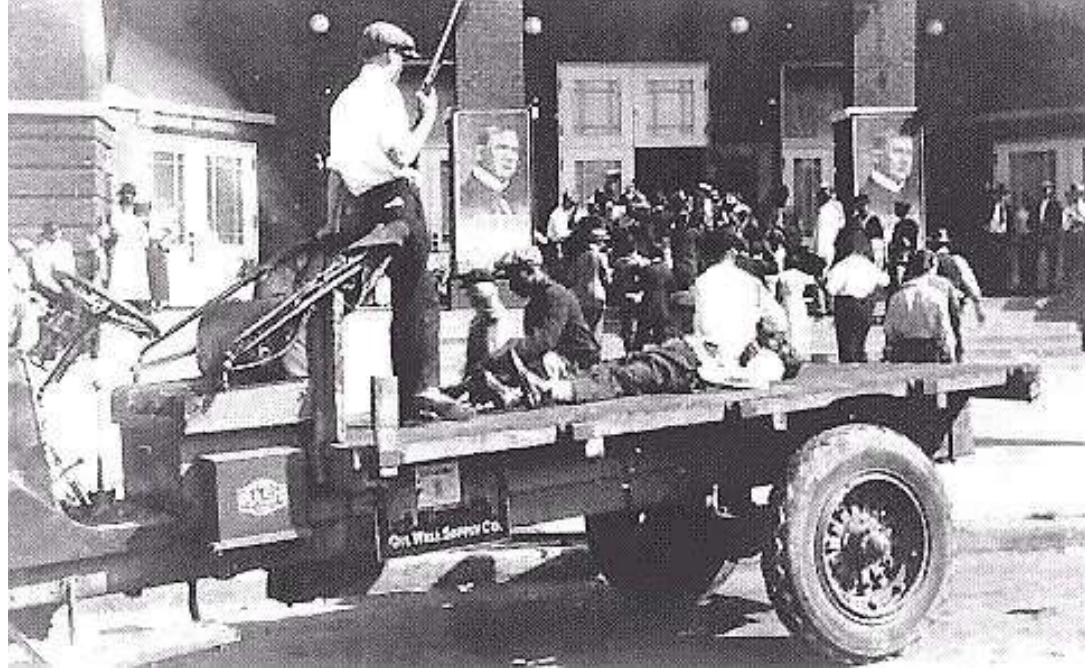
54



**Members of NAACP's New York City Council picketing
for anti-lynching legislation before Strand Theater
in Time Square.
1937**

Discrimination in the North

By 1900, a growing Number of blacks lived in the Northern Cities. Many more migrated to the north in search of better-paying jobs & social equality. But after their arrival, they found discrimination similar to that of the south. They found themselves forced into segregated neighborhoods, because local residents & realtors prevented them from moving into white neighborhoods. Blacks also faced discrimination in the workplace. Labor unions often denied them membership & employers hired them as a last resort & fired them before white employees



The history of the United States has produced much in the way of race riots. This country has experienced much civil unrest between blacks and whites. The year 1919 was particularly noted for the large number of riots in the urban areas of the North where returning white veterans of WWI competed with Southern Blacks for jobs during the post-war depression. Again, in 1923, a racial confrontation erupted in Rosewood, Fl. There eight blacks and two whites died during the destruction of the Black community of Rosewood. However, the Tulsa Race Riot of 1921 was perhaps the costliest incident of racial violence in American history.

The Riot began on May, 31, 1921 because of an incident the day before. A black man named Dick Rowland, stepped into an elevator in the Drexel Building operated by a woman named Sarah Page. Suddenly, a scream was heard and Rowland got nervous and ran out. Rowland was accused of a sexual attack against Page. One version of the incident holds that Rowland stepped on Page's foot, throwing her off balance. When Rowland reached out to keep her from falling, she screamed. The next day, Rowland was arrested and held in the courthouse lockup. Headlines in the local newspapers inflamed public opinion and there was talk in the white community of lynch justice. The black community, equally incensed, prepared to defend him. Outside the courthouse, 75 armed black men mustered, offering their services to protect Rowland. The Sheriff refused the offer.

A white man then tried to disarm one of the black men. While they were wrestling over the gun, it discharged. That was the spark that turned the incident into a massive racial conflict. Fighting broke out and continued through the night. Homes were looted and burned.



Though they were outnumbered 10 to 1, Black's, many of whom were veterans of WWI, started to form battles lines and dig trenches. The conflict shifted to the northern part of Tulsa in the Frisco tracks area. The Tulsa police force was too small to stop the rioters, so the mayor, T. D. Evans, asked the governor to send in the National Guard. While the National Guard was on its way to Tulsa, whites set fire to houses and stores. Fire companies could not fight the fire because rioters drove them away.

On June 1, 1921, a big cloud of smoke covered The northern region of Tulsa. Later that morning, the last stand of the conflict occurred at foot of Standpipe Hill. According to the *Tulsa Tribune*, the National Guard mounted two machine guns and fired into the area. The black groups surrendered and were disarmed. They were taken in columns to Convention hall, the McNulty Baseball Park, the Fairgrounds and to a flying field. Some survivors later alleged that planes were involved in the destruction of Greenwood City.



Tulsa



Discrimination In the West



Native Americans



Mexicans



Asians

In the western part of the United States various ethnic groups such as Japanese, Chinese, Mexican & Native Americans all faced discrimination as well as Blacks.

- They were paid less than their white counterparts**
- Mexicans sometimes found themselves reduced to a system of involuntary servitude in which they were forced to work off a debt called: *DEBT PEONAGE*.**
- The Chinese were forced into segregated schools & neighborhoods & because of strong opposition to them immigrating to the U.S. The Chinese Exclusion Act was passed in 1882, which prohibited Chinese Immigration to the U.S.**