



West Virginia Adult Basic Education Programs

Serving Culturally and Linguistically
Diverse (CLD) Adults Learning
English Language and Civics Skills



WVABE: Our Mission

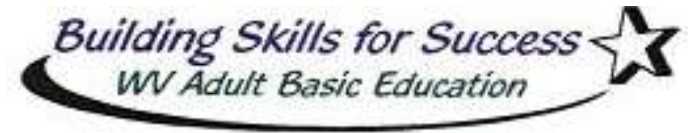
To enable adult learners to be literate, productive, and successful in the workplace, home, and community by delivering responsive adult education programs and services.





West Virginia

Adult Basic Education (WVABE)



○ WVABE Serves learners who:

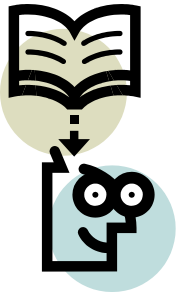
- Are 16 years of age or older
- Are not enrolled in secondary school and...
 - Lack sufficient basic skills to function effectively on the job, in the family, or in society; or
 - **Are unable to speak, read, or write the English language; or**
 - Do not have a high school diploma or GED®

⑩ <http://wvde.state.wv.us/abe/>



WVABE Classes

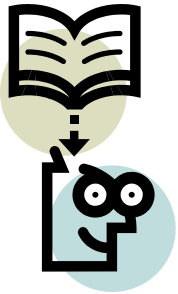
- Some classes have fixed intake/enrollment schedules; some are open entry
- Geared toward the needs and goals of individual students
- Friendly, supportive environment
- Mixture of individualized, small or large group, and computer-assisted instruction
- Access to distance education resources (Rosetta Stone, PLATO, WIN courseware, etc.)





WVABE Classes

- Both federal and state funds flow through the WVDE to LEAs (Local Education Agencies).
- Almost every county offers ABE/GED classes.
- **Some counties also offer English as a Second Language (ESL) Only classes; some offer EL/Civics classes.**





English Literacy and Civics (EL/Civics) Program

- The EL/Civics program is a set aside grant from the U.S. Department of Education.
- \$60,000 in funds come to West Virginia each year for EL/Civics instruction.
- Next spring an RFP will open funding to new programs.



Federal Legislation Provides EL/Civics Funding to:

- *Help students acquire the skills and knowledge to become active and informed **parents, workers, and community members**.*
- *Equip students with the skills and knowledge needed to **participate effectively** in the education, work, and civic opportunities of this country.*



Which WVABE Classes are Open to CLD Students?




- ESL Only Full-time Classes funded by WVABE:

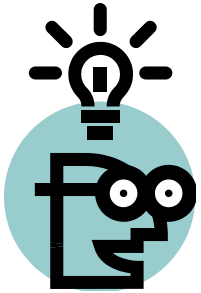
- Charleston and Morgantown

- ESL Only and EL/Civics Part-time Classes funded by WVABE:

- Beckley, Charles Town, Huntington, Martinsburg, Moorefield



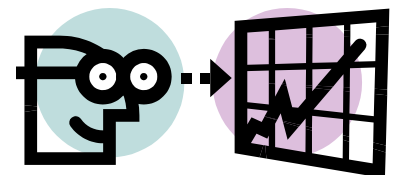
Can ESL Students Attend General ABE/GED Classes?



- More verbal ESL students with some literacy skills may benefit from attending a regular **adult education basic skills** class in any county.
- County adult education programs that have served ESL students in the past:
 - Fayette, Greenbrier, Harrison, Jackson, Mercer, Monroe, Ohio, Marshall, Putnam, Randolph, Upshur, Wood

How Can I Get an Adult ESL Class Started in My County?

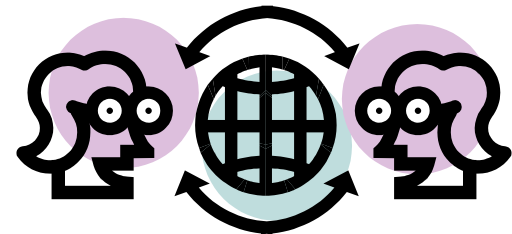
- Create a needs assessment survey to find out who might attend.
 - Distribute to schools, churches, or businesses with high concentration of the target groups.
- Get enough students to start a class.
 - At least 16 people who say they will attend.
 - At least 12 students who register.
 - Maintain an average attendance of eight students per class session.



Literacy WV Affiliates

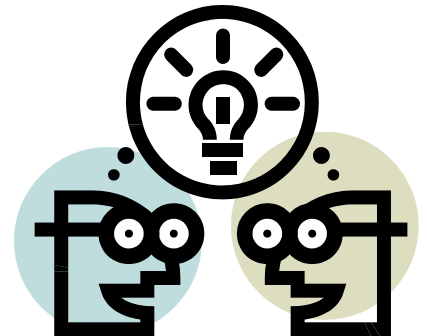
Provide Literacy Volunteers

- Primarily one-on-one tutoring by trained volunteers who provide confidential tutoring/mentoring
- Flexible scheduling and location
- Individualized instruction
- All affiliates have reading tutors; some also have volunteers trained to tutor ESL students



Which Literacy WV Affiliates Serve ESL Students?

- Literacy WV affiliates with tutors trained to deliver ESL instruction:
 - Berkeley, Greenbrier, Hardy, Harrison, Jackson, Jefferson, Kanawha, Morgan, Monongalia, Preston, Putnam, Randolph, Upshur, Wood



Locating Free WVABE and Literacy WV Programs

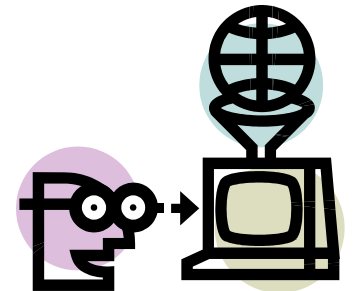
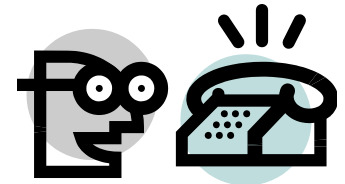
○ Contact Cathy Shank

- cshank@access.k12.wv.us

- 1-800-257-3723 ext. 112

○ Call the Adult Education Hotline:

- 1-800-642-2670



Locating Free WVABE and Literacy WV Programs

○ WVABE Class Directory:

- Electronic Searchable Listing:

www.wvabe.org/class_directory

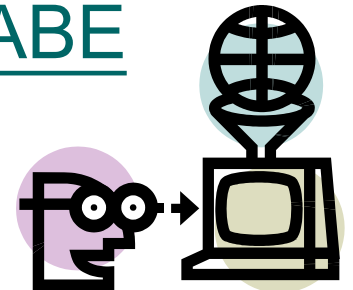
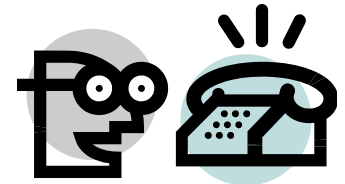
- Printed Directory by County:

● <http://tinyurl.com/ClassListWVABE>

○ Literacy WV Affiliates:

● <http://literacywv.org>

- Click on *Literacy Programs* tab.



WV TESOL Spring Conference

April 6th, Charleston, WV

Conference Information at www.TESOLWV.org

WV TESOL SPRING CONFERENCE

SATURDAY, APRIL 6, 2013

IN TOUCH WITH ENGLISH LANGUAGE LEARNERS

All those working or interested in working with English language learners in programs that serve non-native English speakers are invited to attend our 16th annual conference with the theme, "In Touch with English Language Learners," which focuses on how TESOL professionals can be more aware of students' needs and find ways of connecting them to one another and to their English speaking communities.



WV TESOL 16TH ANNUAL SPRING CONFERENCE

WHEN
SATURDAY, APR 6TH, 8AM-4:30PM

WHERE
GARNET CAREER CENTER
422 Dickinson Street
Charleston, WV 25301

Hosted by Kanawha County ABE/ESL Program

PRESENTATIONS

There will be presentations for all levels and settings, including the public school system, adult and literacy education, and higher education. Join us and learn more about:

- Project-based instruction
- Skill area instruction and assessment
- Technology in Instruction
- Common Core Standards for ESL
- Advocacy and community involvement
- Family Involvement

SCHEDULE

Pre-Conference, Friday, April 5

- 5:00-6:00 - WV TESOL Board Meeting
- 6:30-8:00 - Meet and Greet at Sahara Restaurant
Plan to arrive on Friday and get to know other WV TESOL attendees and enjoy an all-you-can-eat buffet and drink for \$15. Join us at 189 Summers Street, Charleston, WV.

Conference, Saturday, April 6

8:00 a.m. to 4:30 p.m.

- Registration, Morning Refreshments
- Welcome and Keynote Address by Kim Keene, Migration and Refugee Services Director at Catholic Charities WV
- Concurrent Sessions: Presentations of Interest to practitioners at K-12, adult, and higher education levels
- Roundtable Discussions
- Lunch, Membership Meeting, Elections
- Concurrent Sessions
- Closing, Evaluation, Textbook Giveaways

REGISTER NOW! Easy online registration at <http://tiny.cc/WVTESOLregister>

| | Members | | Non-Members | |
|-------------------------------|--|--|----------------------|--|
| | Full-time Salary | Students, Part-time Salary, or Volunteer | Full-time Salary | Students, Part-time Salary, or Volunteer |
| Postmarked Before 3/21 | Member Dues: \$20 Conference Fee: \$25 Total: \$45 | Member Dues: \$10 Conference Fee: \$25 Total: \$35 | Conference Fee: \$55 | Conference Fee: \$40 |
| Postmarked After 3/21 | Member Dues: \$20 Conference Fee: \$25 Total: \$45 | Member Dues: \$10 Conference Fee: \$20 Total: \$30 | Conference Fee: \$65 | Conference Fee: \$45 |

ACCOMMODATIONS

Field Inn

1000 Washington St. E • (304)343-4561 (800)288-2800 • \$97/night • free Wifi, parking, and breakfast • 2 blocks from Garnet Career Center • Blocks of rooms reserved with code WV TESOL

We are a professional organization for those who teach English as a second language. We seek to strengthen ESL teaching, promote research, and provide opportunities to share ideas with other ESL professionals in WV. Learn more about us at tesolwv.org.





WVTESOL Spring Conference

April 6th, Charleston, WV

PRESENTATIONS

There will be presentations for all levels and settings, including the public school system, adult and literacy education, and higher education. Join us and learn more about:

- Project-based instruction
- Skill area instruction and assessment
- Technology in instruction
- Common Core Standards for ESL
- Advocacy and community involvement
- Family Involvement