

# EJ Marshall's English Learner Advisory Commitee (ELAC) Parent Meeting 2019-2020

*Families and Schools in  
Partnership*



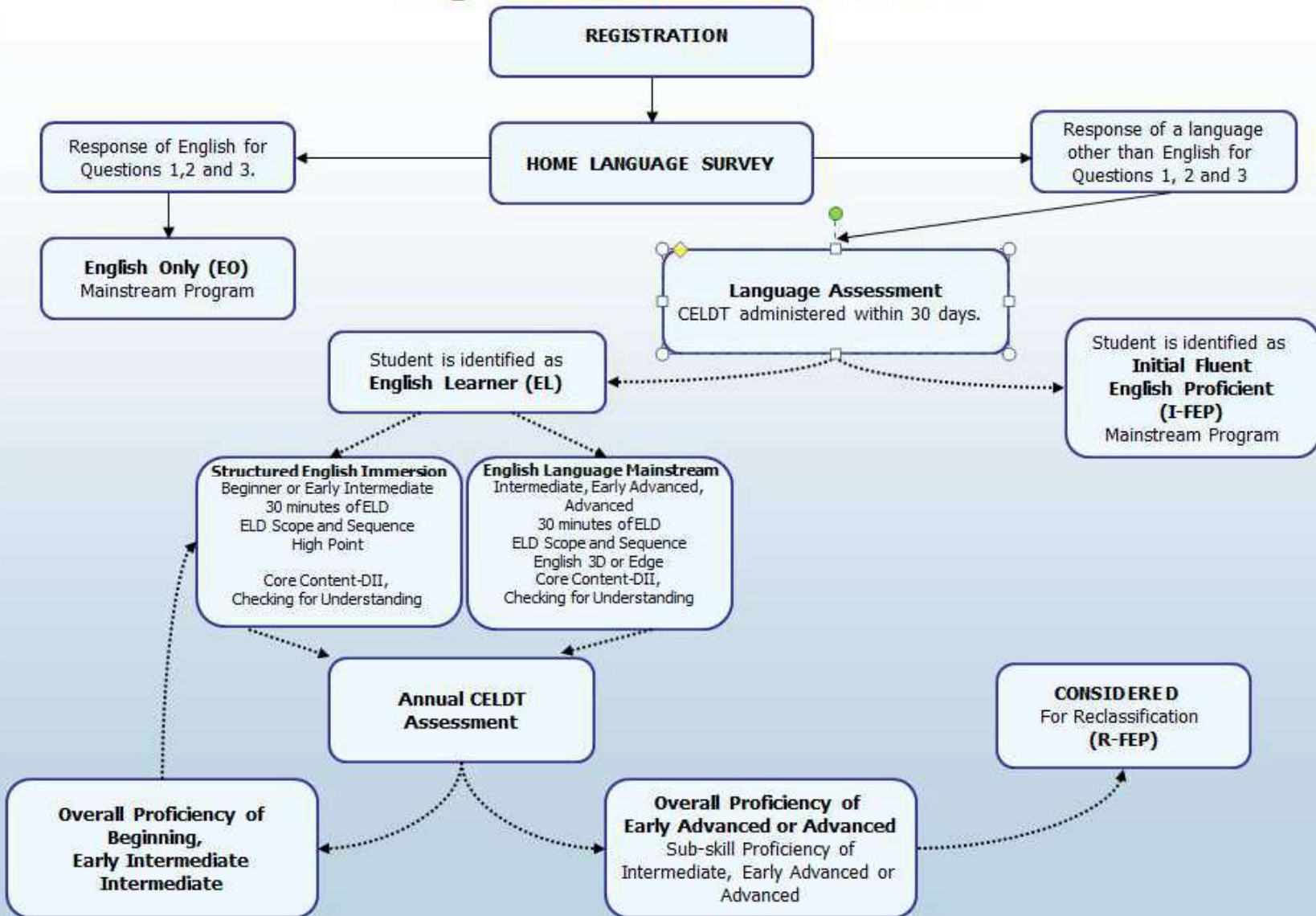
# Identification of Language Learners- Home Language Survey

2

- Information given upon enrollment of any student new to a CA public schools in grades K-12
- Determines if student will be tested for the English Learner Program.
- Consists of 4 questions.
- Students with a language other than English take the ELPAC Test to determine their Language proficiency level.



# English Learner Placement





# What level is my Child?

4

- English Language Proficiency Assessments for California (ELPAC) Shows the Language proficiency level of English Learner students in Reading, Writing, Listening and Speaking.
  - Level 1-Minimally developed
  - Level 2-Somewhat developed
  - Level 3-Moderately developed
  - Level 4-Well developed



# DELD Instruction-Designated English Language Development

5

- Students receive 30-45 minutes of DELD instruction daily.
- Required for those students at Overall ELPAC levels 1-3
- Students at ELPAC level 4 will receive language instruction through class instruction.
- Classroom teachers deliver the DELD instruction.
- Students may go to a different teacher for DELD to be taught at their language level.
- DELD instructional materials are part of our Wonders Reading/Writing Program



# English Language Learners and School Accountability through the LCAP and FPM

6

- English Learners and Designated ELD is a Federally Monitored Program.
- In order to meet the stated Local Control Funding Formula (LCFF) and our District's LCAP (Local Control Accountability Plan) underserved students such as English Learners must be provided with services to help them show academic growth.
- Designated English Language Development is one of these.



# The Criteria for 2019-20 Reclassification.

7

- Reclassification-Process that changes an English Learner student to the classification of R-FEP (Redesigned Fluent English Proficient)
- The student must have an overall score of 4 (well-developed) on the ELPAC test.
- Student must also score Standard Met (3) OR Standard Exceeded (4) on the Smarter Balanced Summative Tests for ELA OR:
  - Other work samples from school including report cards, writing samples, and other classroom assessments.
- Agreement by parents, teachers, and school administrators.
- Students are honored with a Reclassification Certificate and a medal!



# EL Grading Policy

8

- EL Students will be graded and receive report card grades just as any other student in the district.
- The only exception is for those EL students who have been in the country for less than 12 months. These students can receive an N/A no mark if the teacher chooses to do so.



# English Learner Advisory Committee



# Some Schools are Required to Have Functioning English Learner Advisory Committees (ELAC)

10

- California public schools
- Grades K-12
- 21 or more English learners
- Should be a “free-standing” committee with separate agenda and minutes.



# Who Can Be a Member of the ELAC?

11

- Parents of EL Students
- Staff
- Interested community members



# Responsibilities of the ELAC cont.

12

- To advise
  - The Principal and school staff about the school's program for English learners after reviewing data (ELPAC, SBAC data, attendance data).
  - The School Site Council on the development of the Single Plan for Student Achievement  
(with budget considerations)



# ELAC Responsibilities

13

- Assists with the school's English Learner needs assessment
- Assists the school's effort to make parents aware of the importance of regular school attendance
- Participate in some cool and informative ELD mini-lessons.



# Upcoming Marshall ELAC Dates 2019-20

14

All meetings will be held at 9:00AM in Room 14

- Tuesday, December 17th, 2019
- Tuesday, February 18th, 2020
- Friday, April 24th, 2020



# District English Learner Advisory Committee (DELAC)

15

- District English Learner Advisory Committee
- One representative from ELAC will attend the DELAC meetings-duties can be shared!
- They will meet 4 times per year at the Family Engagement Center at 9:00am
  - Tuesday, September 24, 2019
  - Tuesday, December 10, 2019
  - Tuesday February 11, 2020
  - Tuesday, April 14, 2020



# ELPAC Practice Activity

16

- Listening and Speaking Activity!