

# First Thing

- Grab a worksheet.
- Do the activity on the front page.

# “Helpless”

- Suicide rate rose from 13.9 per 100,000 to 17.4.
- 250,000 fewer marriages from 1929-1932.
- Chicago 1932 1400 families were evicted.
- One bridge over 2000 families huddled under it.
- New York City 85,000 meals a day at the soup kitchens.

“refugees just walked the streets or sat unmoving on park benches, trying not to look with too much obvious hunger at the begging pigeons”



# Hoover's Strategy and Downfall

- Only president for 8 months.
- Had been known as the "Great Humanitarian"



# Laissez-faire

- Urged business leaders not to cut production
- Hawley-Smoot Tariff (1930) – highest import tariff in history! Killed trade!
- He believed in “Trickle-down Economics” and Laissez-faire



a doctrine opposing governmental interference in economic affairs beyond the minimum necessary for the maintenance of peace and property rights

# Volunteerism and Localism

- Thought Americans would not act in their own interests, but for the nation.
- Factories cut production & laid off workers and farmers kept planting more.
- Wanted state and local levels to provide more jobs and take care of their own charities, but they didn't have the money either.
- Thought the federal government should not give handouts.
- "rugged individualism."

# Self-Reliance



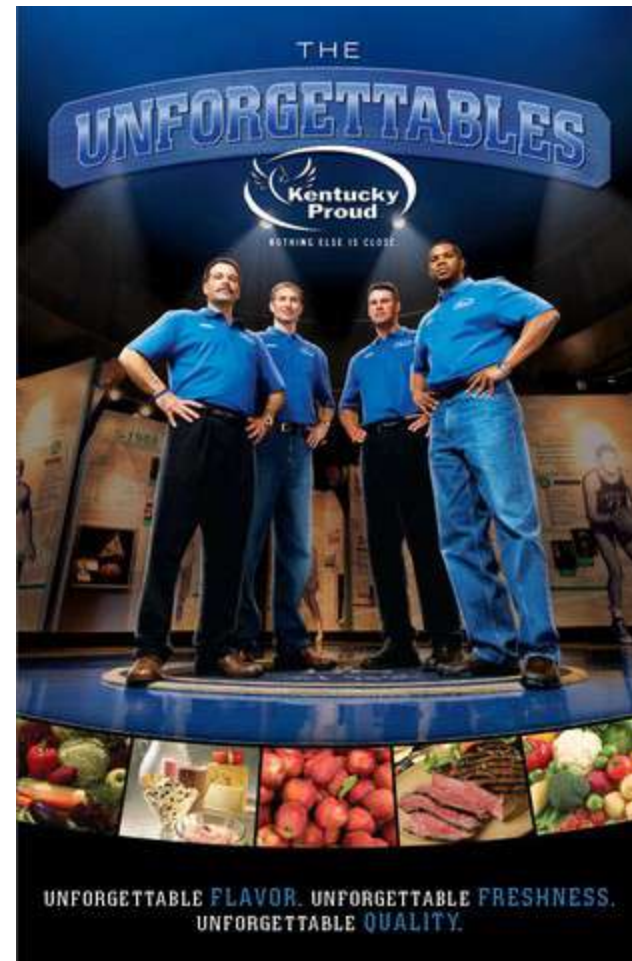
# Public Works

- Increase public works programs.
- Spend a lot of state and local money to fund programs.
- Economic conditions had worsened.



# The Agricultural Marketing Act (1929)

- AMA - passed before the Crash
- Farm Board urged farmers to pool products and sell as a group to raise prices.
- Failed b/c it provided no immediate help or loans to farmers.





# Democrats Attempt



- Democrats took hold of Congress in the 1930s.
- Urged president to support more public relief programs.
- “Hooverilles”

# European Woes

- May 1931 Austria bank collapsed.
- Panic gripped financial institutions in neighboring countries.



# Reconstruction Finance Corporation (RFC)

- Provide federal loans to troubled banks, railroads, and other business.
- Failed to deal directly or forcefully enough with the real problems of the economy.
- Lent only to companies with sufficient collateral.



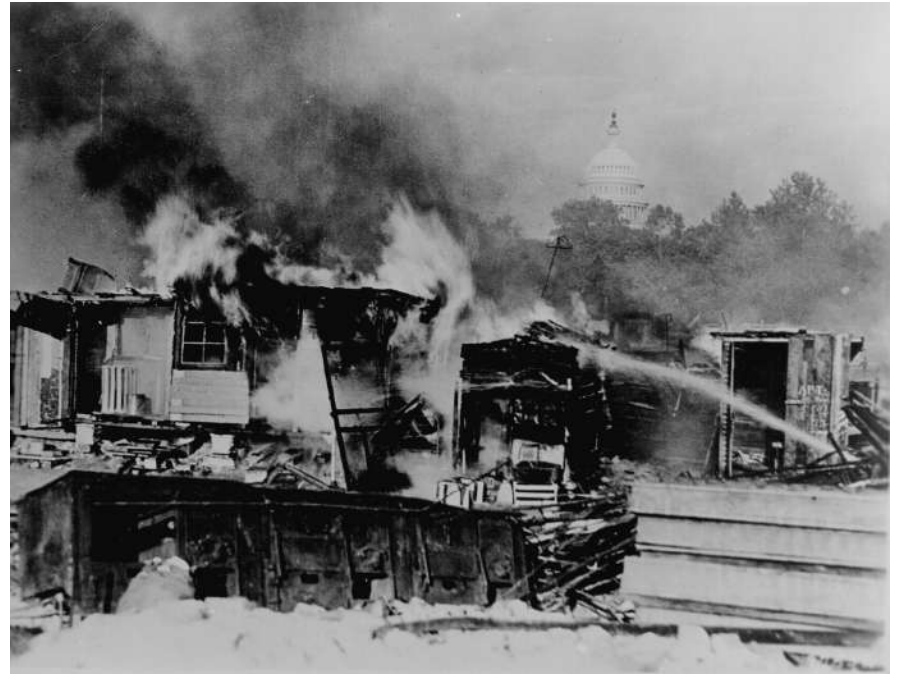
# Too Little Too Late!

- Hoover the “Great Humanitarian” now seemed cold and indifferent.
- Summer 1932 photo of him feeding his dog, King Tut, further irked the public. Why?



# The Bonus Army (Summer 1932)

- 20,000 WW I vets to Washington, DC to demand bonus early.
- Hoover vetoed a bill and told the vets no!
- Riots broke out in July then U.S. Army drove them from the capital and burned the camp.
- Dozens were injured!



# Who Will Restore Hope?



# Election of 1932



"I pledge you, I pledge myself, to a new deal for the American people."

- Few believed Hoover would win re-election.
- Nominated the governor of New York , **Franklin Delano Roosevelt.**

# Something to think about...

- Hoover's response to the Great Depression. What do you think of his "small government" mentality?
- Why do you think Hoover's approval ratings dropped so low?
- Do you think it is fair that Hoover was blamed for the Depression? Why or why not?