

Partnering for Progress: The role of early remediation in preparing college ready students



**Sue Cain, Senior Policy Advisor
Kentucky Council on Postsecondary Education
Conway, Arkansas**

Websites Describing the Policy and Work

www.cpe.ky.gov

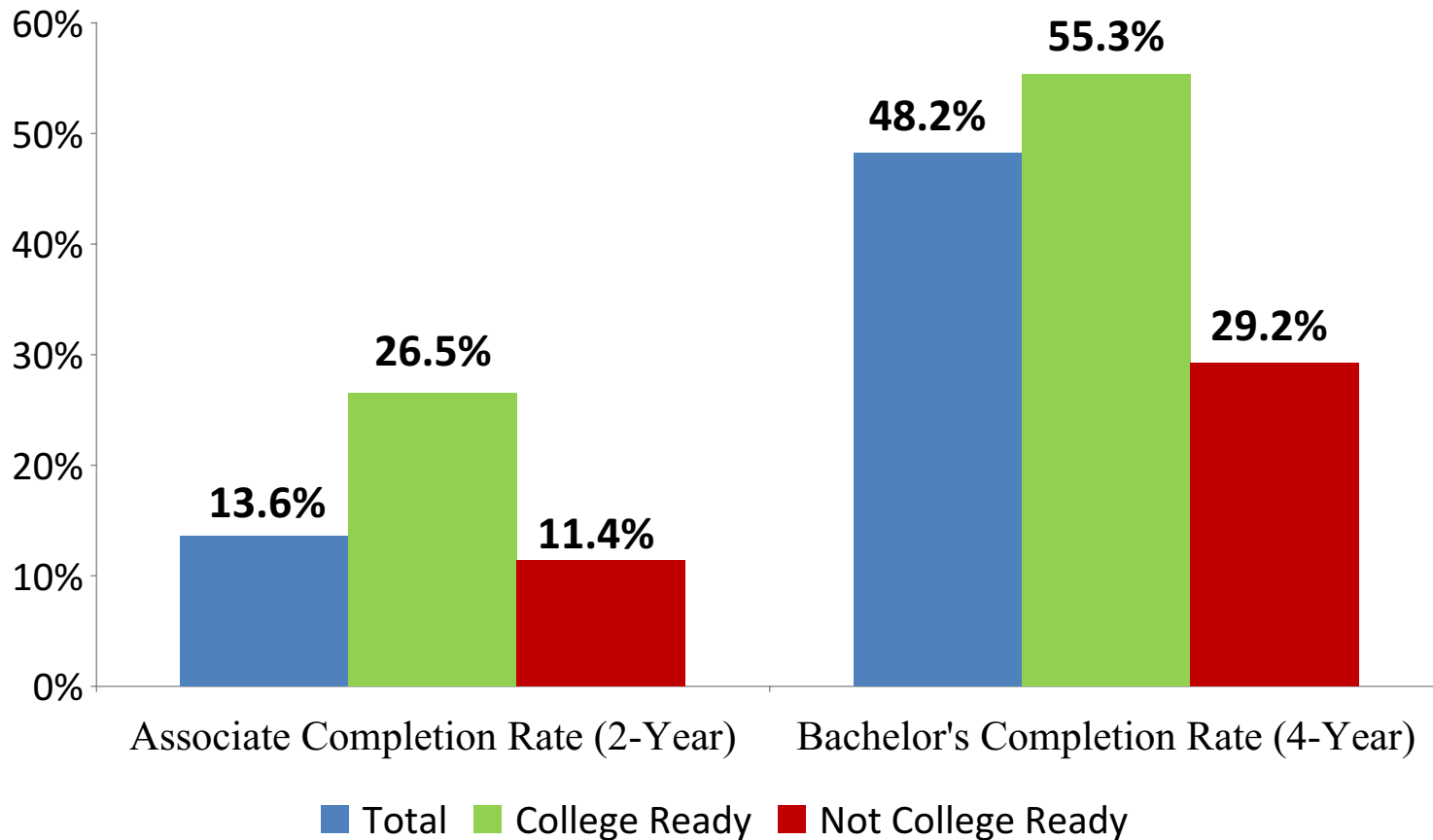
<http://education.ky.gov>

Why is the Postsecondary and K-12 Partnership so Important?

Let's let information and data
tell the story.

Graduation Rate Gaps

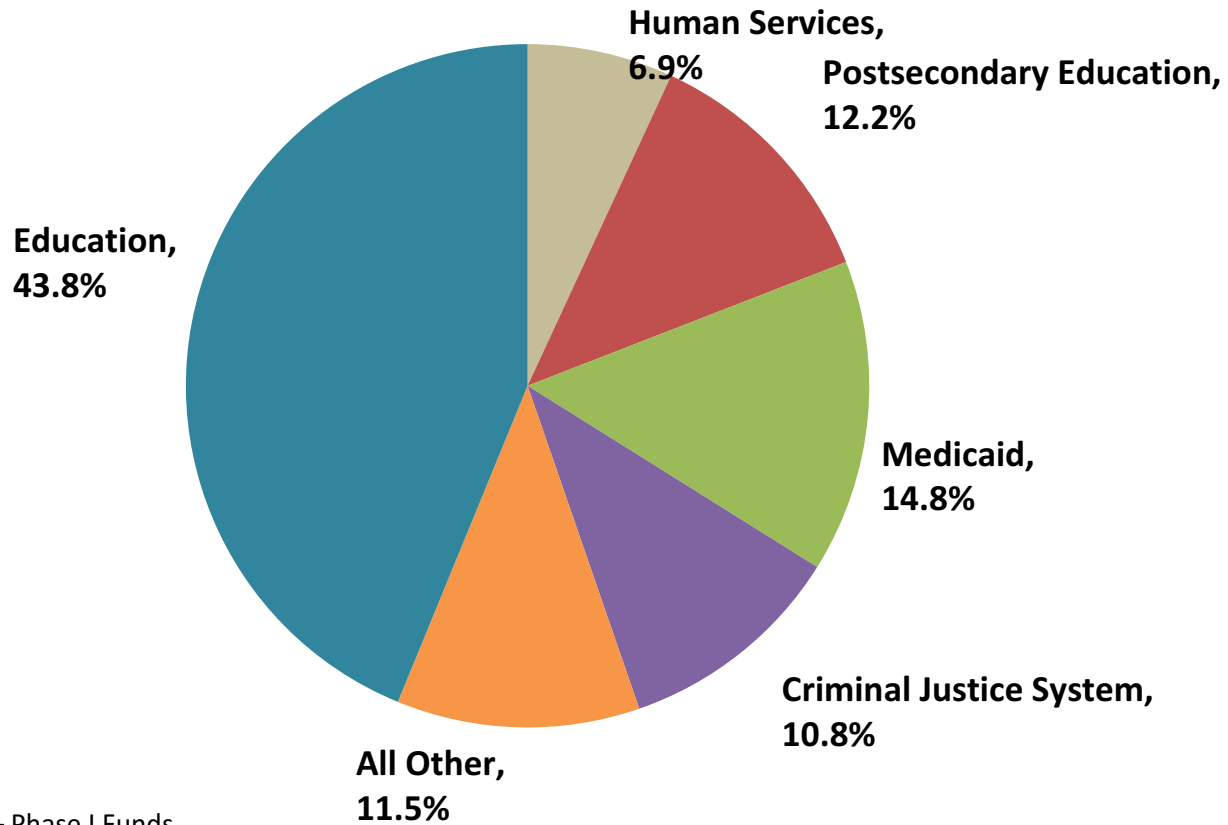
Underprepared Students
System completion rates of full-time, first-time associate and baccalaureate students who entered a Kentucky public or independent university and completed a degree at any in-state public or independent institution, by college readiness at entry.



2012-14 Biennium

Distribution of General Funds Appropriations

Total = \$19.3 billion



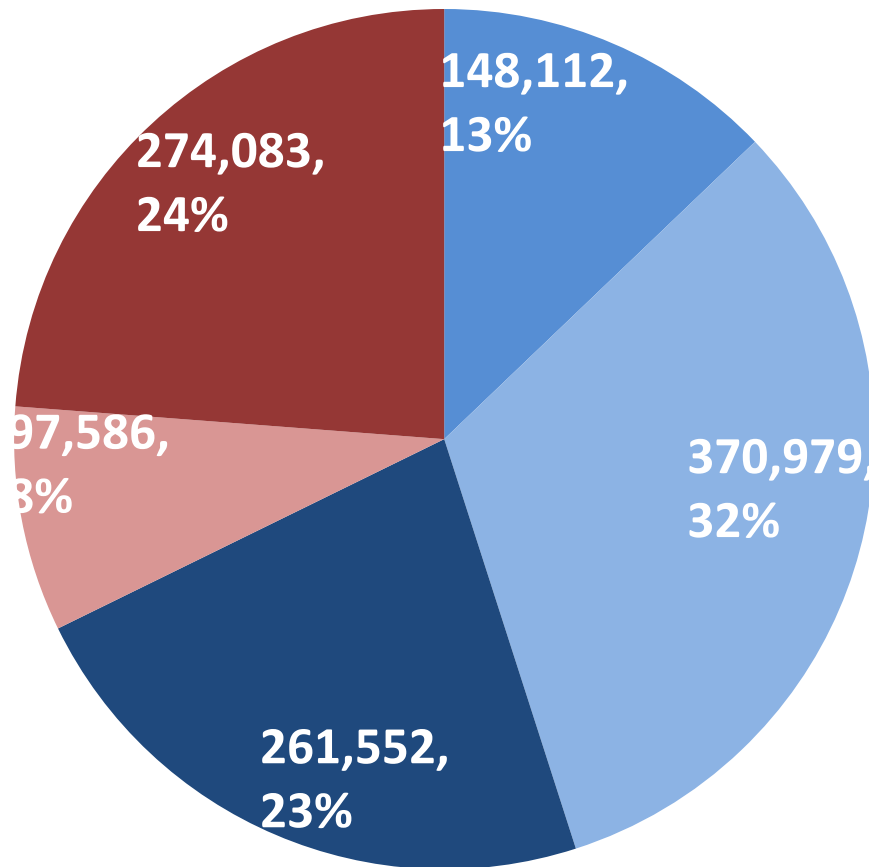
Excludes Tobacco Settlement – Phase I Funds

* Education includes the Department of Education, Teacher's Retirement System, School Facilities Construction Commission and the Education Profession Standards Board.

** Human Services include the Health and Family Services Cabinet (net of Medicaid).

*** Criminal Justice System include the Unified Prosecutorial System, Justice and Public Safety Cabinet and the Judicial Branch.

Education Levels of Kentucky Adults (25-44 years old)



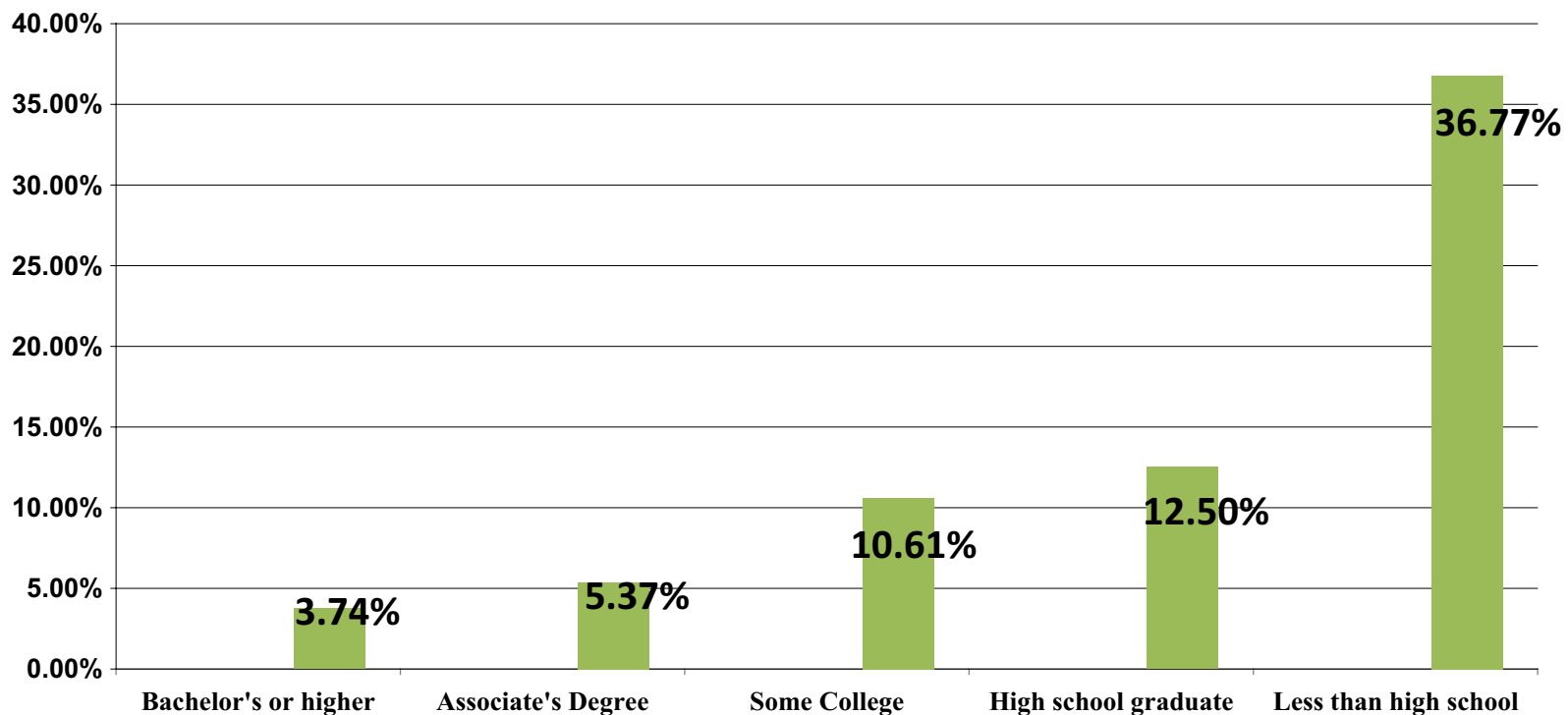
Total working age population
1,152,312

- Less than HS diploma or equivalent
- HS diploma or equivalent
- Some college, no degree
- Associate degree but no bachelor's degree
- Bachelor's degree or higher

Source: U.S. Census Bureau, 2006-10 American Community Survey Five-Year Estimates



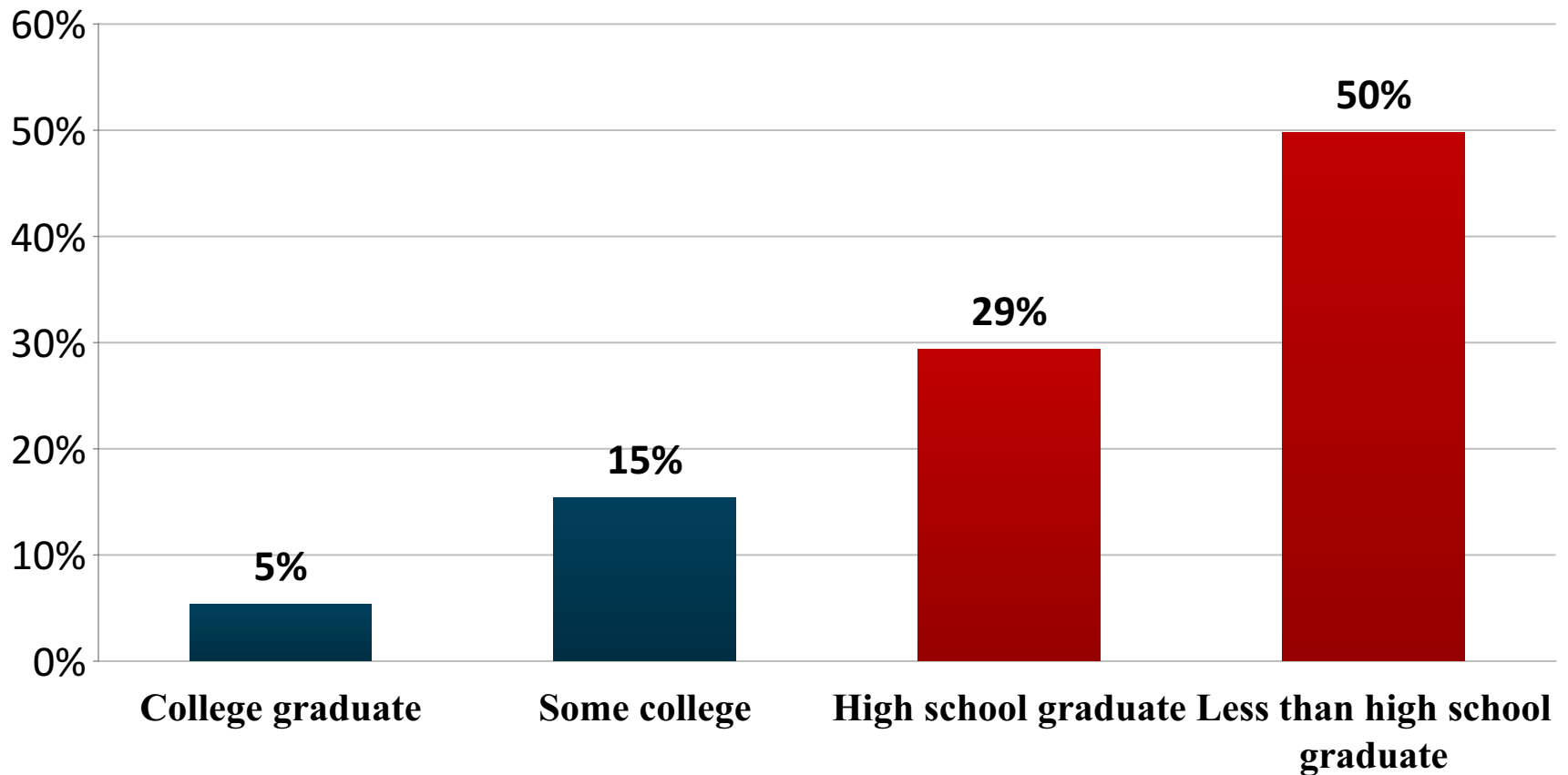
Percentage of Kentucky Population on Medicaid by Education Levels



Source: March 2012 Current Population Supplement, Current Population Survey (CPS)

Incarceration Rates Correlate with Level of Educational Attainment

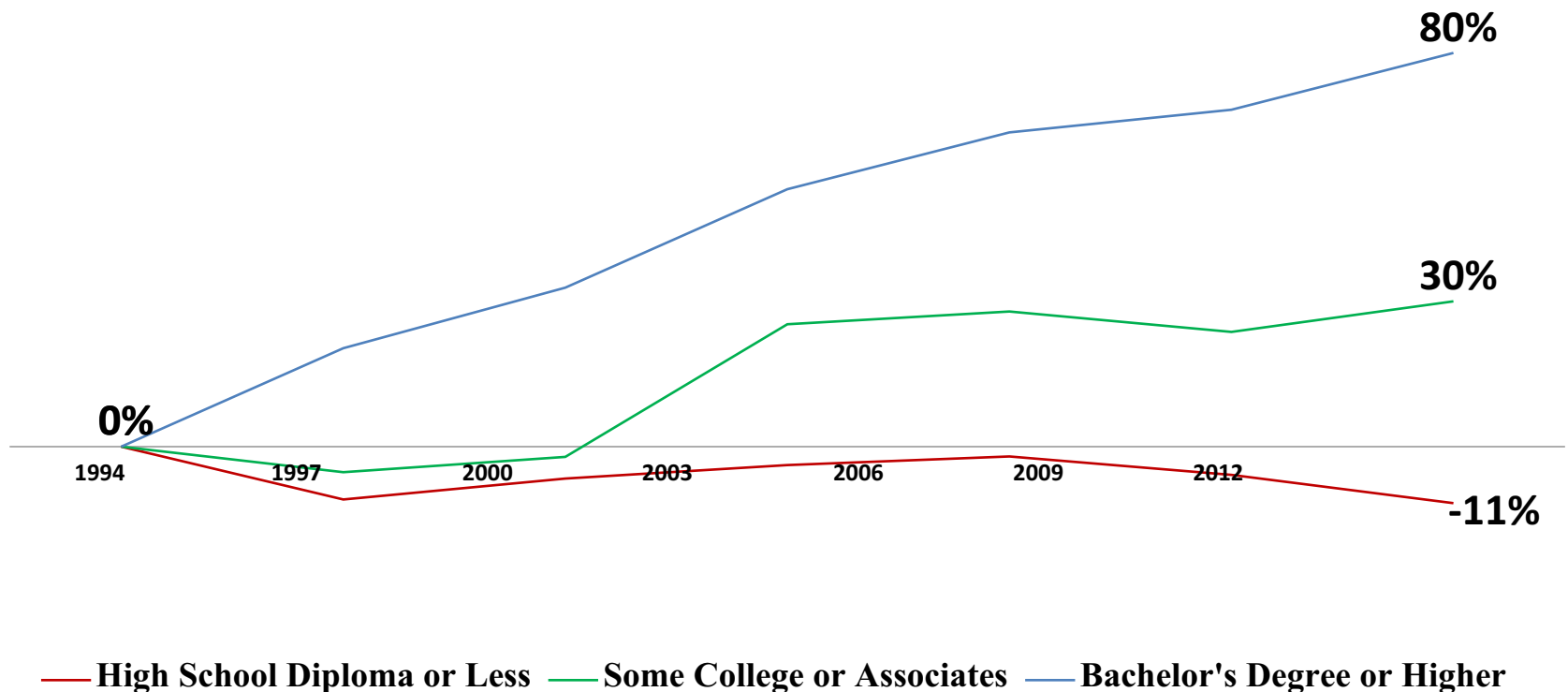
Characteristics of convicted offenders, FFY 2007-08



Source: Bureau of Justice Statistics. Federal Justice Statistics, Statistical Tables, November 2010.



Job Growth in Kentucky by Education Level



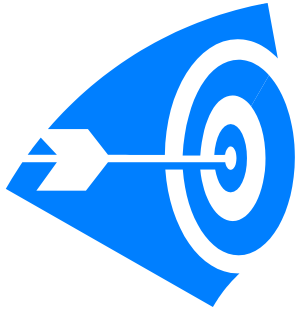
Source: Kentucky Council on Postsecondary Education. Estimate using Current Population Survey (CPS) data (1994-2012). Employment includes those classified as Employed-at work. Each year is an average of Jan., Apr., and Aug. data.



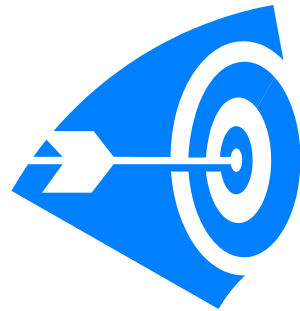
Senate Bill 1 (2009) As Envisioned by the Kentucky General Assembly



Senate Bill 1 (2009) Goals



Reduce college remediation of recent high school graduates by at least 50 percent



Increase college completion rates of developmental students by 3% annually

Commonwealth Commitment



- Signed by college and university presidents, KDE commissioner, CPE President, and legislators.
- Pledged to work collaboratively to improve student transitions and implement the Unified Strategy.

Kentucky's Four Unified Strategies for College and Career Readiness

1. Accelerated Learning Opportunities

Focuses on the expansion of Advanced Placement and International Baccalaureate credit access and dual credit opportunities.

2. Secondary Intervention Programs

Focusing on the development and implementation of transition coursework.

3. College and Career Readiness Advising

Focuses on the full implementation of the Individual Learning Plan and comprehensive advising programs, such as Operation Preparation.

4. Postsecondary College Persistence and Degree Completion

Focuses on bridge programming, supplemental credit-bearing coursework, and student support and intervention systems.

Aligning Standards and Assessments

- Agreement on what constitutes “readiness” and indicators of readiness.
- Common learning outcomes for readiness.
- Kentucky Adult Education adopted the CCS.

Partnering Together



Middle to High School Transition Course Frameworks for English, Mathematics, and Reading



High School Senior Year Transition Course Frameworks for English, Mathematics, and Reading



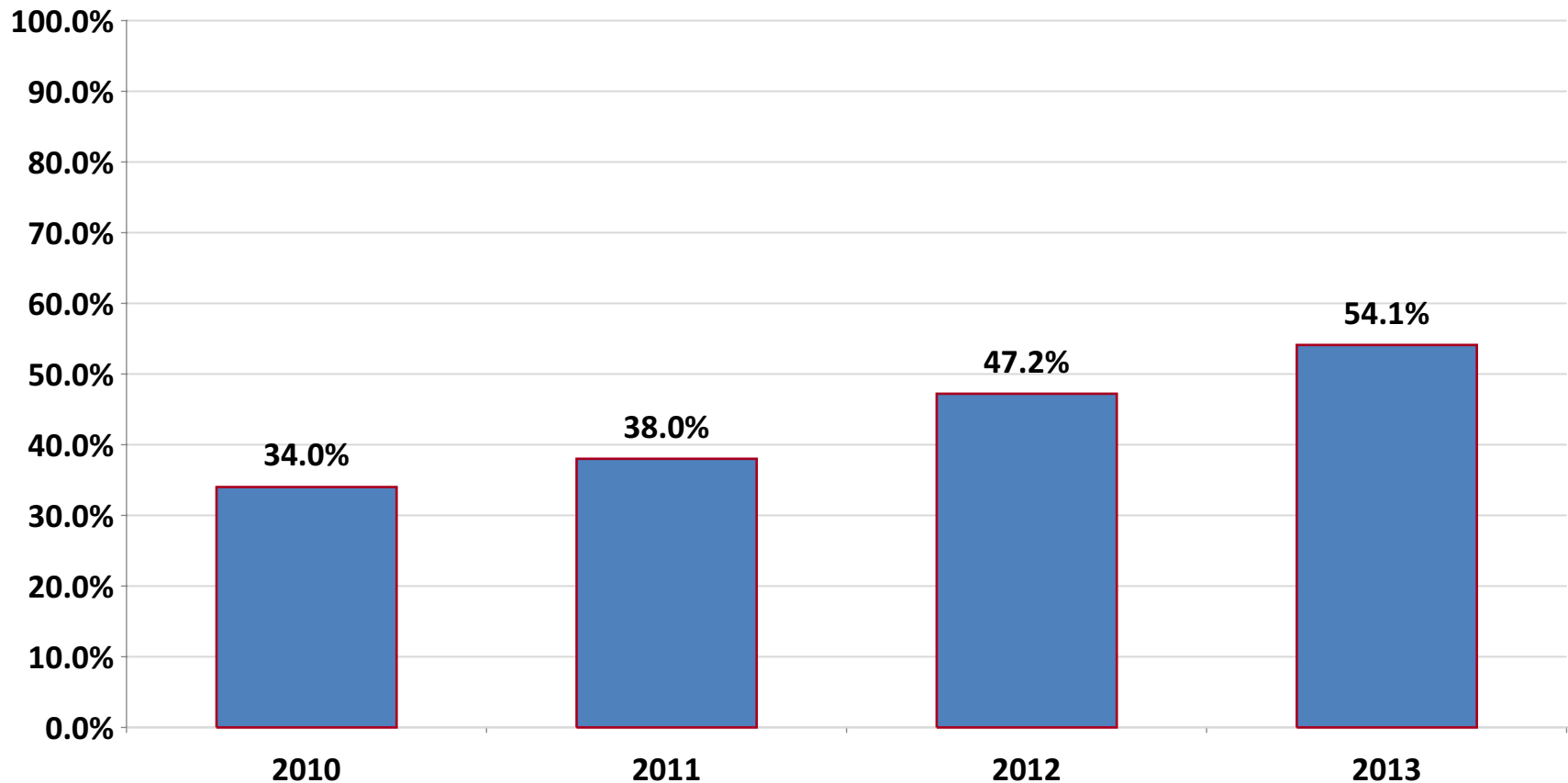
Advising Toolkit for College and Career Readiness



Operation Preparation

The number of high school graduates ready for college has steadily been increasing.

Kentucky's College and Career Readiness Success



Kentucky Department of Education, Oct 2013.

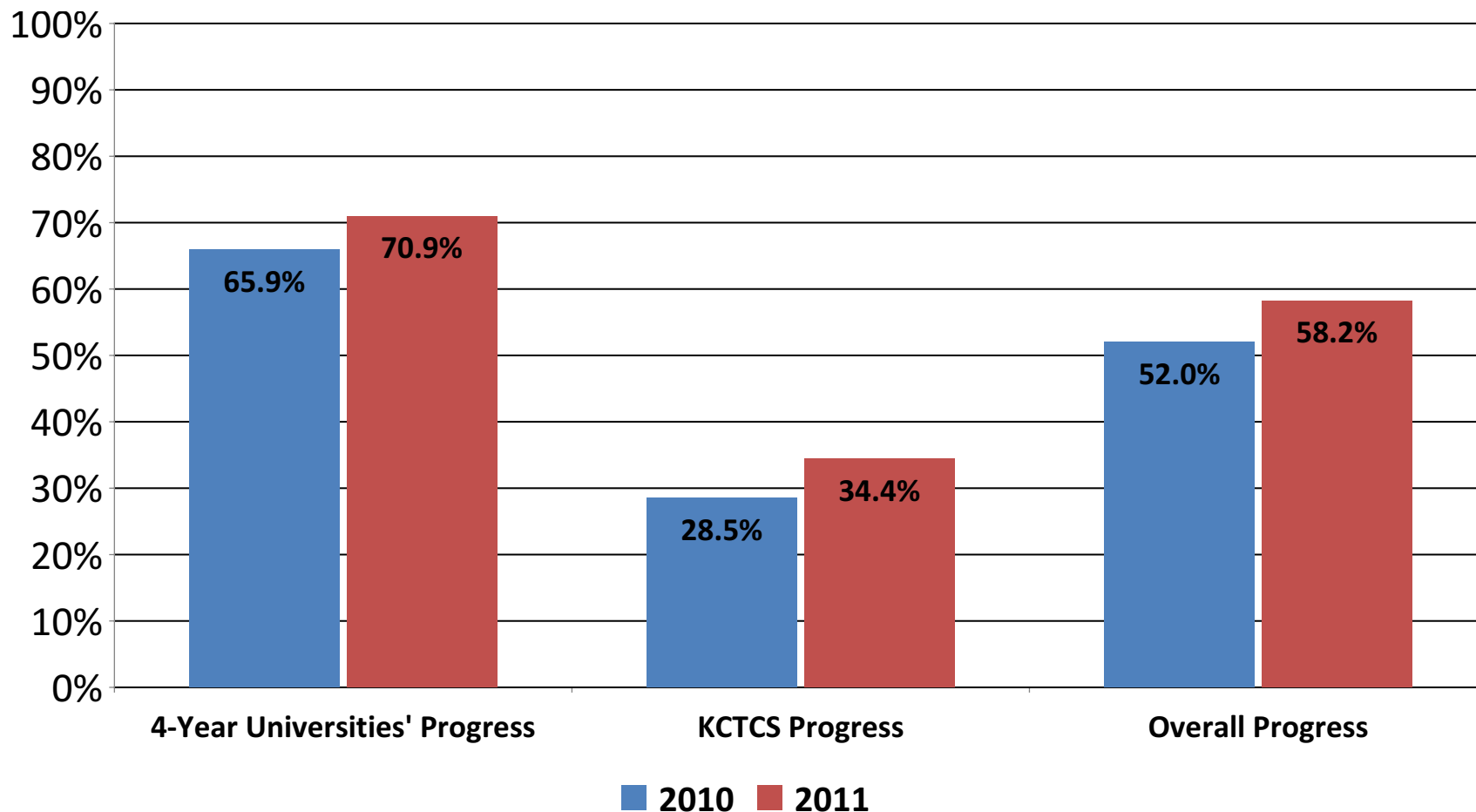
Impressive Results from Our Partnerships

	Graduates who met all three Kentucky benchmarks on the ACT ^{1,2}	Graduates who met Kentucky benchmarks on COMPASS/KYOTE placement exams ³	Graduates who met career readiness benchmarks	Graduating Class Size
2012	14,255	4,511	1,463	43,121
2013	15,377	6,289	1,971	43,874

1. Kentucky's ACT benchmarks for readiness are English 18, Mathematics 19, College Algebra 22, Calculus 27, and Reading 20.
2. ACT data is from the statewide 11th grade administration or any national administration from the past four years
3. Placement data includes graduates that met 2 of 3 ACT benchmarks but met one benchmark from COMPASS or KYOTE
4. Our college/career readiness goal for 2014 graduates is 56.1%.

College Readiness Increases, 2010 to 2011

Kentucky recent high school graduates and first-time, undergraduate undecided, degree and credential-seeking college students



Source: Kentucky Council on Postsecondary Education Comprehensive Database System. Jan 2013.

Related Benefits



Standardization of general education learning outcomes



Enhanced transfer opportunities across the system



Agreement on common placement exams and common learning outcomes for college readiness



Redesign of master's degrees for teachers/leaders incorporating more rigorous standards and continuous assessment strategies

Related Benefits



The collaborative process has meant leaving silos behind and individual agendas at the door.



The knowledge that it takes everyone to create, support, and sustain a culture that values education.



A stronger community within and between educational agencies has been developed.



Stronger relationships developed between KDE and districts and schools and between CPE to the colleges and universities.

**The Work Continues:
Developmental Education,
Teacher Preparation, &
Professional Development**

High Impact Educational Practices for College Persistence and Degree Completion

- ☐ Accelerated Learning Opportunities**
- ☐ College and Career Readiness Advising**
- ☐ Bridge Programming**

High Impact Educational Practices for College Persistence and Degree Completion

Accelerated Learning Opportunities

- **Remediation based on assessments that identify an individual student's needs.**
 - **Aligning content with course and major requirements (Pathways).**
 - **Access to supplemented credit-bearing courses with academic supports**
 - Extended class times
 - Labs
 - Required supplemental course
 - Required tutoring, mentoring, and academic advising programs.
- Only 3 in 10 students have the opportunity to participate because of limited availability.**

High Impact Educational Practices for College Persistence and Degree Completion

College and Career Readiness Advising

- **Academic goal setting**
- **Access to majors or meta majors** in areas of interest for all students
- **Student success courses** with topics like time management, effective speaking and listening skills, financial literacy, and career awareness
- **Experiential learning experiences relevant to student's area of study**

High Impact Educational Practices for College Persistence and Degree Completion

Bridge Programming

- **Academic boot camps** prior to first semester enrollments
- **Summer or first-semester bridge programming**
 - **Co-requisite course modeling designs to the extent possible for student success**
 - **Integrated mentoring programs with students who had participated in the programs**
 - **Integrated advising programs that follows students after the bridge is completed**
 - **Integrated tutoring and academic supports for students**
 - **Faculty and staff are important**
 - **Follow-up and follow-through contacts with students throughout the students' academic careers**

Websites of Interest

<http://www.kycorestandards.org> (Common Core Standards Information for Postsecondary Education Faculty)

<http://education.ky.gov> (Unified Strategy for College and Career Readiness, School Report Cards, Open House, Unbridled Learning, College/Career Readiness for All, Intervention Programming - middle and high school transition courses, Advising Toolkit, Operation Preparation)

<http://cpe.ky.gov> (College Readiness Indicators [contains the learning outcomes for transitional, developmental, and supplemental courses and the statewide writing rubric], Dual Credit Policy, Standardized Chart for National Exams, Senate Bill 1 (2009), 13 KAR2:020 (College Admissions Regulation), College and Career Readiness in Kentucky, Commonwealth Commitment)

Questions and Discussion



Dr. Sue Cain,
Senior Policy Advisor
Kentucky Council on Postsecondary Education
Sue.Cain@ky.gov