



DRUGS

Drug: Anything ingested that has an effect on the function of the user (not food)

Tolerance: building up a resistance to a drug

OTC- (over the counter): drugs that do not require a doctor's prescription

Withdrawal: symptoms experienced when stopping using an addictive substance

-nausea-cravings-tremors-headaches

-irritability-sweating-depression-vomiting

-fatigue-jumpiness



"SHE'S HAVING WITHDRAWAL SYMPTOMS. HER CELLPHONE'S IN REPAIR."

Drug misuse- using a legal drug in an improper way

-taking too much

-using someone else's medication

-mixing medications

Drug abuse- using a drug for non-medical reasons (just to get high)



Side Effect: secondary effects of a drug or medication

Drug Interaction: the way a drug can act differently when taken with another substance.

Addiction: the compulsive need for a substance despite its harmful effects.

Overdose: taking an excessive or dangerous amount of a drug



"Wish I could!"

Physical Dependence: Body relies on a substance or drug.

- Cells cannot function without it.
- May experience withdrawal (body telling you it needs more of the substance to return to its new (artificial) state of normalcy.)



Psychological Dependence: all in the mind.

- Think you need the drug and cannot live without it.
- Life/daily activities revolve around getting the next dose.

Depressants: Drugs that slow down body functions

AKA- “Downers”

Effects:

Sleepy

Decreased heart rate

Decreased breathing rate

Decreased reaction time

Decreased concentration

Impairs vision and coordination

Poor judgment



*Prescribed for anxiety, stress, tension, insomnia

Types of depressants:

Xanax

Alcohol

Marijuana

Valium(muscle relaxant)

Sedatives (sleep aids)

Barbiturates

Dilaudid

GHB

Rohypnol

**** Dangerous when combined**



Stimulants: Drugs that speed up body functions
AKA- "Uppers"

Effects:

Increases alertness and activity

Pupils dilate

Increase heart rate

Increase blood pressure

Increase body temperature

Loss of appetite



Types:

Caffeine

Crack

Meth

Cocaine

Ecstasy

Ritalin

Adderall

Bath Salts

**** very addictive because
“high” is often followed by a
strong low (crash)**

I've gotta cut back on the caffeine



Narcotics: Drugs used as pain killers or cough suppressants.

Effects: Relieves pain, dulls senses

Types: Opium Vicadin

Heroin Morphine

Oxycontin Codeine Percoset

Fentanyl Oxycodone Dilaudid



**** Highly addictive...** brain learns to function with narcotics and cannot function without.

**** Oxycontin:** 1 pill meant for 24-hour pain relief.
When snorted, full strength goes directly into bloodstream

Hallucinogens: Drugs that alter senses

Effects:

Senses distorted

Slurred words

Lose muscle control

Hear voices

See images that aren't there

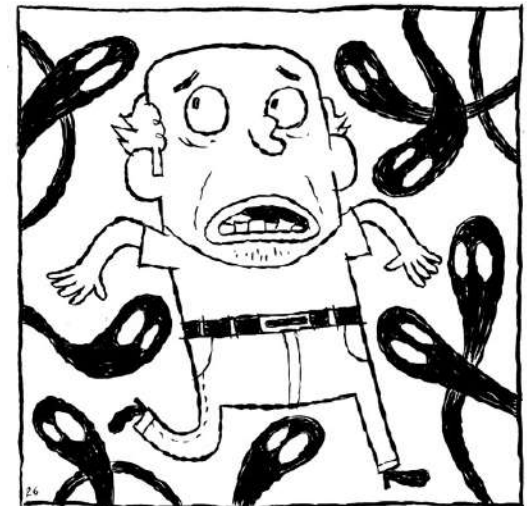
Flashbacks

Rapid mood swings

Dissociative effects

Heart/lung failure

Death



Types: Bath Salts Dextromethorphan (DXM)

Ecstasy Marijuana LSD

Salvia Magic Mushrooms (psilocybin)

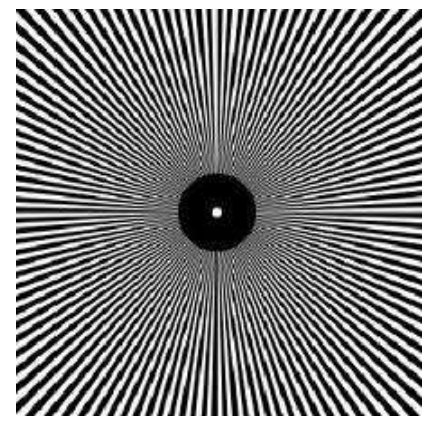
PCP Meth Peyote (mescaline)



** danger of permanent brain damage

** tolerance developed quickly

** easy to overdose



Ecstasy7. Inhalants

Methamphetamine8. Cocaine/Crack

Marijuana9. Bath Salts

Synthetic Marijuana10. Dextromethorphan

Heroin11. Krokodil

Rohypnol12. Adderall/Ritalin

Anabolic Steroids: Fake testosterone

Effects:

Increased muscle size and strength

Increased aggression (violent)

Acne

Increased blood pressure

Bad breath

Eventual impotence

Liver & kidney damage

Men: increased female characteristics

(testicles shrink, increased breast tissue, baldness)

Women: increased male characteristics

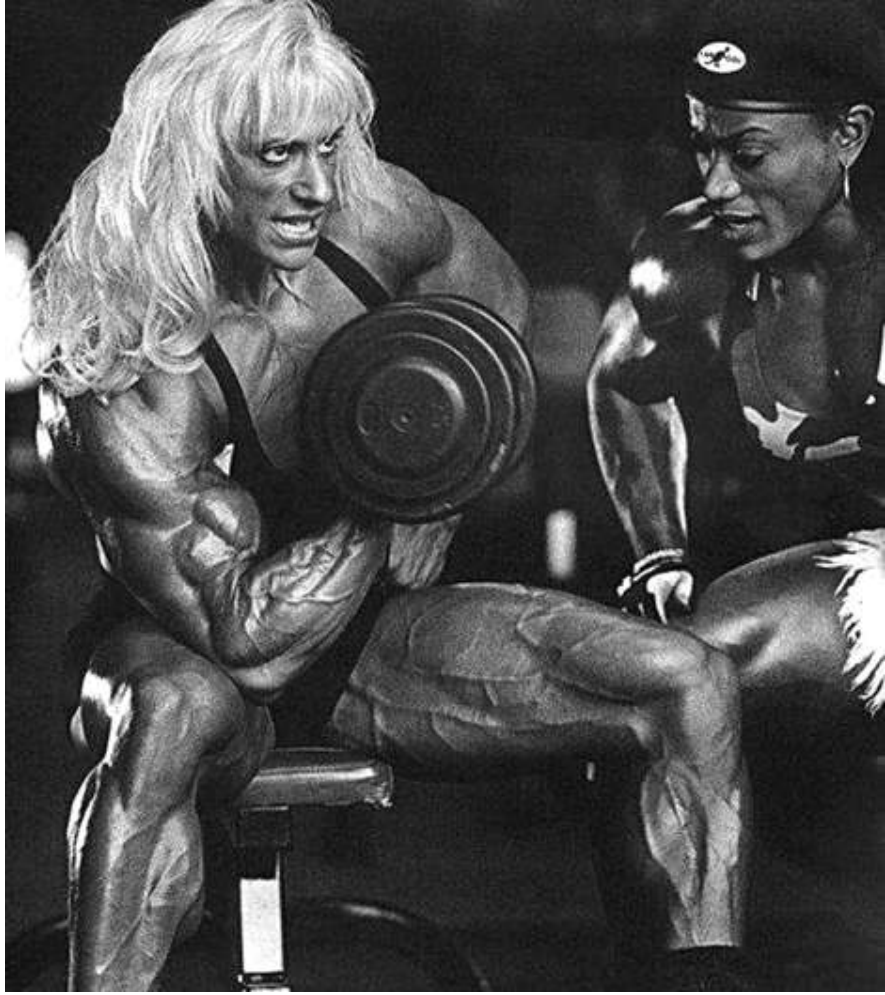
(facial hair, lower voice, decreased breast size, periods

stop)











BEFORE



AFTER





Ecstasy: also known as: E, X, Stacy, Molly
(methylenedioxymethylamphetamine MDMA)

Method of ingestion: **Pills** (colorful, pictures), crystals

Effects:

Extreme happiness

Empathy towards others

paranoia

loss of appetite

increased body temperature

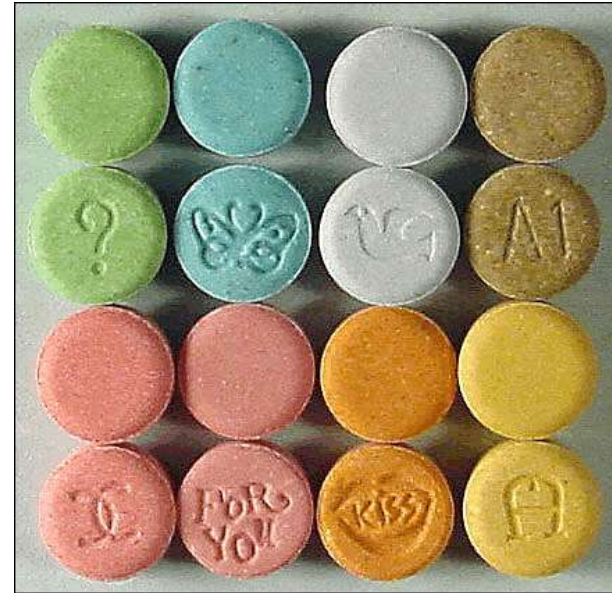
increased heart rate

increased blood pressure

Grinding/clenching teeth

hallucinations

**** found at clubs, parties**



Methamphetamine also known as meth, ice, crystal

Method of ingestion: smoked, snorted, swallowed, injected

Effects:

increased energy and alertness

loss of appetite

high body temp

sores (crank bugs)

rotten teeth (meth mouth)

stroke

****Medical use?*****



Made from :OTC decongestants drain cleaner

Battery acid lantern fuel

Antifreeze hydrochloric acid

Brake fluid Red phosphorous

** meth labs very explosive

** smell of cat urine

** very prevalent in our area

(Meth Valley)





Remains of
exploded Meth Lab
in Madera County

Faces of Meth PP

Marijuana: also known as: **pot, weed, doobies, grass, wacky tobacky**

Method of Ingestion: **smoked:** (vaping, hookah, pipe, bong), **eaten**

Effects:

decreased memory

Increased heart rate

decreased motivation

Paranoia

distorted perception

loss of coordination

difficulty solving problems

munchies



Dangers of Marijuana use on Teenagers

Kicked out of school activities

Slows **mental** development

Lower physical skills

Breathing problems

Lung Cancer (smoking 1 joint=smoking 5 cigarettes)

Addiction

Testicular cancer

Fines up to **\$5000**

Jail time



toke

blunt

reefer

hookah

Made from dried leaves of the hemp plant

THC- active ingredient **Tetrahydrocannabinol**

** can be detected in urine test up to 60 days

** currently legal with prescription in 20 states + DC

** legal for recreational use in AK, WA, CO, OR & DC

** known as the “gateway drug”



Medical uses for Marijuana

- Pain management
- Muscle spasms caused by multiple sclerosis
- Nausea from cancer chemotherapy
- Poor appetite and weight loss caused by chronic illness, such as HIV, or nerve pain
- Seizure disorders



**Marijuana does
NOT cure cancer!!**

Synthetic Marijuana: also known as K2, Spice, Blaze

Method of Ingestion: smoked, eaten, drink like tea

Effects:

hallucinations

vomiting

violence

Trouble breathing

Panic attacks

Seizures

Heart attacks



Sold on the internet and in smoke shops and gas stations as incense, tea, or herbs.

Herbs are sprayed with chemicals that mimic the psychoactive properties of THC, but are not regulated or consistent.

Stronger chemicals that stay in the body longer, resulting in delusional thoughts lasting days or weeks.



****Thought of as harmless, but it's known to be deadly**

Heroin: also known as H, smack, dope, junk

Method of Ingestion: injected, smoked, snorted

Effects:

dry mouth

drowsy

collapsed veins

heart infections

nausea

breathing difficulties

****Currently the most commonly
abused drug in our area****



Made from the opium plant

** sharing needles causes additional risks

** **super addictive** –horrible withdrawal symptoms (flu x 100)

** **depressant & narcotic**



Rohypnol: also known as **Roofies, Date Rape Drug**

Method of Ingestion: odorless, colorless, tasteless
liquid or powder

Effects:

sleepy

amnesia

muscle relaxation

slow muscle response

slurred speech

lack of coordination

death



**** often slipped into drinks**

Inhalants also known as **huffing, sniffing, whippets**

Method of ingestion: **inhaling**

Effects:

Intoxication

Slurred Speech

Brain damage (starves brain of oxygen)

Memory Impairment

Kidney/Heart, Lung, Bone Marrow damage

Instant death (22% the first time)

****Sudden Sniffing Death Syndrome****

****Can kill user at any time**

Items commonly used: **aerosols, paint thinners, glue, toxic markers, nail polish, cooking spray, air dusters**



Cocaine/Crack: aka **Coke, Blow, Snow, Rock, Nose Candy**

Method of Ingestion:

Cocaine- snorted, injected
Crack-smoked



Effects:

Red, bloodshot eyes

increased temperature, heart rate, blood pressure

insomnia

Runny nose, sniffing

loss of appetite/weight loss

feelings of restlessness, irritability, and anxiety.

The high from snorting may last 15 to 30 minutes, while that from smoking crack cocaine may last 5 to 10 minutes.

Once the drug leaves the brain, the user experiences a "coke crash" that includes depression, irritability, and fatigue.

****VERY ADDICTIVE****



Bath Salts: also known as **Bliss, Cloud Nine, Ivory Wave, Pure Ivory, White Knight, and White Lightning.**

Method of Ingestion: smoked, injected, snorted, eaten



METH
+
COCAINE



Effects:

Severe paranoia

suicidal thoughts

violent behavior

confusion

hallucinations

increased body temperature



DXM: Dextromethorphan, cough suppressant

- Method of Ingestion: liquid, tablets, capsules
- Effects: High dosage= depressant
- Spacey/euphoria
- Loss of motor control
- Hallucinations
- Nausea
- Itchy Skin



- Normal dosage for ages 12 and up:
60-120mg daily
- Abusers: 200+mg!



Amount of DMX consumed and effects

100 to 200mg – mild stimulant

**200 to 400mg – may experience
euphoria and hallucinations**

**300 to 600mg – distorted vision
and loss of motor control**

**500 to 600mg – a dissociative
(out-of-body) reaction may occur**

Krokodil- “the flesh-eating drug that eats junkies”

Method of ingestion: Injecting

Made by mixing codeine with gasoline, lighter fluid, and iodine

Provides a very strong, but short-lived high = **INSANELY** addictive

EXTREMELY toxic

Effects:

Green scaly skin

Severe tissue damage

Limb loss



Adderall/Ritalin

AKA: diet coke, kiddie cocaine, skittles, smarties, study pill

Methods of Ingestions

Effects

Pills (various colors)

sleep disturbance

Snorted

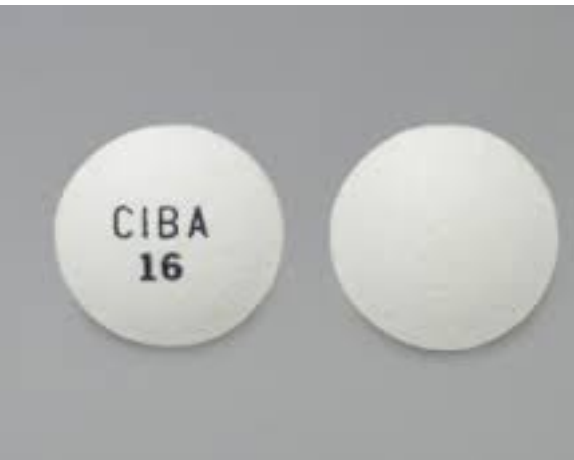
loss of appetite

Injected

anxiety

irritability

**increased: heart rate,
blood pressure &
temperature**



Fentanyl

AKA: Apache, china girl, jackpot, dance fever, TNT

Methods of Ingestion

Injection

Pill

Dermal Patch

Lozenge/ lollipop

Effects

Euphoria

Drowsiness

**Respiratory
depression/arrest**

unconsciousness



The problem is...

- Looks like heroin
- easily put into heroin



Narcan: reverses the effects of opioids with the risk of overdose or getting more high.



Psilocybin

AKA: magic mushrooms, 'shrooms, caps, boomers

Method of Ingestion

Eaten

Brew in tea

Edibles

~190 types of 'shrooms

Can be found in southern US

Effects

Nausea

Weakness

Altered perceptions

Anxiety

flashbacks



Designer drugs: drugs that are created in a laboratory (typically, an “underground,” or secret, illegal lab)

-created by using chemicals to change a drug that comes from a plant—such as cocaine, morphine, or marijuana

-The resulting “designer” drugs typically have a new, different effect on the brain or behavior.

- ingredients and potency (how strong they are) vary a lot, making it nearly impossible to know what is actually in them or what they can do to you

-unknown mixtures can cause dangerous side effects, such as seizures, memory loss, coma and even death.

-These drugs often do not fall in the category of ILLEGAL drugs, and are considered LEGAL....at least at first

Examples of Designer Drugs

Ecstasy (Molly)

LSD (acid)

Methamphetamine

Bath Salts

Smiles (2C-I)

Krokodil

