



DETAILED Edgenuity SYLLABUS and PROCEDURES Your resource for all things Edgenuity! 2015-2016

Teacher: Gail Moriarty

This syllabus is a guide to the things you should know & implement to be successful. EVERYTHING done in this class is geared toward helping you EARN this credit! ☺

Edgenuity Online Class Overview:

This course is different than most courses because it is somewhat self-paced & online, yet interactive with a live teacher! The academic concepts covered will remain the same. Much of your coursework (listening to lectures from online instructors, completing vocabulary activities, practice/homework questions, writing journals/essays, lab activities, and online quizzes/tests) will take place during this class period; however you will be required to access the program through the library and/or home access in order to keep "on target" to complete the curriculum by the end of the semester. The advantage of being self-paced is that you can move quickly through material that you know well and spend longer on things that you may need to.

Because EDGENUITY is self-paced, you will be given the opportunity of being MORE responsible for yourself. To be successful with this course it is ESSENTIAL that you are PRESENT and on time every day, on task at all times within the class period, and are able to track/maintain your progress through the course. You will need to move efficiently through the material. Help will be here to support you, but the ultimate responsibility for your success lies with you.

MATERIALS NEEDED



- pen and/or pencil

** A notebook will be given to you to be left in the classroom when you are not doing library or home access.

** Textbooks will be available in class to assist you at any time.

** It is best for you to have a calculator in class at all times for your use

COURSE REQUIREMENTS

In order to be successful within this class you MUST:

- be able to navigate the web & track your own online progress
- have average to above average English reading skills
- come prepared and ready to WORK DAILY on your course
- complete all assignments independently in an organized notebook as directed
- treat your fellow students & teacher with respect
- get one-on-one help when you need it



Evaluation:



➤ **Your "grade" in your class throughout the semester is your Edgenuity "Actual Grade".**

➤ You can monitor your progress by viewing your *Edgenuity Progress Report* and your *Assignment Calendar* in the *Edgenuity Organizer*. Progress will also be displayed on a chart set up in the back of the classroom

Explanation of Terms you will see: (The highlighted 3 are the ones to pay attention too!)

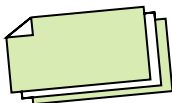
- **Target Completion %** - the percentage of the course that should be done thus far in order to be on-pace.
- **Complete %** - the percentage of the course that you've completed
- **Overall grade** - the grade that reflect your % of content knowledge that you've demonstrated. **IGNORE THIS.**
- **Actual Grade** –This is the fraction of the course that you have completed times your Overall Grade.
- **Relative Grade** – the grade you earn including 0% for all components remaining incomplete

➤ Remember that grades are NOT GIVEN to you by the teacher. **Grades are EARNED.**

➤ **P⁶ = Proper planning & preparation prevents poor performance!**

<u>PERCENTAGE GRADING SCALE:</u>		<u>4.0 SCALE</u>	<u>What Do Your Grades Really Say?</u>
97.0-100%	A+	4.00	
93.0-96.5%	A	4.00	You can teach it.
90.0-92.5%	A-	3.67	
87.0-89.5%	B+	3.33	
83.0-86.5%	B	3.00	You can help someone with it.
80.0-82.5%	B-	2.67	
77.0-79.5%	C+	2.33	
73.0-76.5%	C	2.00	You can do it yourself.
70.0-72.5%	C-	1.67	
67.0-69.5%	D+	1.33	
63.0-66.5%	D	1.00	You need help to do it.
60.0-62.5%	D-	0.67	
59.4% or below	E	0	You need to learn how to do it again.

Course Components



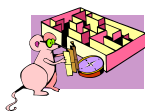
➔ There will be a quiz, and sometimes a lab assessment, as part of each lesson. You must get a **minimum score of 60%** on these in order to proceed with the program. If you get less than 60% you must come see me, after you've reviewed your work, so I can help with re-learning. If you are **“on target”** with the program then you will be given up to 2 retakes to work at increasing your grade. No matter what your 1st grade, you will have 3 chances to take each assessment to raise your grade, if you wish, as long as you are **“on target”**. If you do not obtain this minimum 60%, are not **“on target”**, you will see your teacher to be passed on with your highest score. Unfortunately you will not be permitted retakes until you work to get yourself **“on target”**.... then you can **ALWAYS GO BACK AND RETAKE** any quiz or test that you failed. At the end of each unit, you will also take a comprehensive topic test for which the above applies as well. Remember I am always here to help you, I am your best cheerleader!

- You will begin Quizzes sometimes with not enough time to finish it. If you do not complete a quiz/test, submit it incomplete and see me at the start of the next class to gain access to finish it.
- If you do not finish a Topic Test, **click “save & exit”** so that you can finish it the next day. This is true for Direct Instruction and Homework/Practice components as well.
- Prior to taking all quizzes and tests you will be prompted within the program to get a **“teacher review”**. I will review your online work, as well as your notebook to ensure that you have demonstrated learning of the required lesson material and are prepared to take the quiz/test. As well, your notebooks must be maintained as outlined in class in order to be permitted to proceed with taking each quiz. I may require you to revisit your work for the given lesson and/or, at their discretion, alter your grade to reflect your actual mathematical efforts for the given assignments.
- **You will be able to use your notes on all tests, quizzes & lab assessments.** The better the notes you take, the easier the assessments will be! You must show copy ALL original questions and show ALL the algebraic work, as modeled in the program or by myself, in your notebook to support each of your lab, quiz or test answers. Keep in mind that your grades will be adjusted up or down to reflect the demonstrated content knowledge of the work.



Strictly Enforced School Policies:

- Per school policy, there is **NO food or drink, opened or unopened, permitted in the classroom.** Students failing to abide by this **will** receive an immediate lunch-school detention.
- You may listen to music, but **ONLY via the computer**, and **ONLY using a streaming music service** like Pandora, Spotify, or 881thepark.com. You may NOT use YouTube.
- **No music during lectures or reading. You will lose music privileges if you do.**



Behavioral Expectations:

Guidelines or expectations are a necessary part of everyday life. They help provide order and keep things running smoothly. In school, these expectations help provide an atmosphere where YOU can put forth your best effort and learn. The consequences for not following these expectations can range from a warning, a call to your parent/guardian, a lunch-school detention, mandatory out-of-class access/work, and/or a referral to your Assistant Principal or the *Edgenuity* Assistant Principal. In all cases, the consequences will be appropriate to the situation and the individual. Repeated infractions will lead to progressive disciplinary actions.

This is only a partial list of expectations. The ones below have been highlighted because of their importance. The teacher may add or change the expectations/rules at any time should it become necessary.

- Be in class **on time** and seated at your station with all your *Edgenuity* materials when the bell rings.
- The learning process requires **alertness**. Students are expected to be responsible for staying awake and paying attention during class. If you are AHEAD of schedule (in the ‘green’), you may be off-task! ☺

- ➔ You must **properly wear the class headphones** during all vocabulary & lectures.
- ➔ **Using the computers for ANY purpose other than the online course material will not be permitted.** This includes accessing email, games, instant messaging, paint program, MiStar etc. **You may only access the *Edgenuity* program and the sites it links to.** Not abiding by this will result in a detention upon the first offense. There will be no warnings. A 2nd offense will result in a referral to the office. You may look at MiStar during passing time. **And the spoken of music sites during class.**
- ➔ **Tampering with the computer equipment and/or “repairing” of the equipment will not be tolerated.** This may result in a referral to the office and being charged for the damaged product. Please notify me of any needed repairs.
- ➔ You must **remain at your workstation** unless you are in line for a review/bypass/retake/question. You are not permitted to wander around the classroom.
- ➔ **Respect** others and their property, including items provided to you in class.
- ➔ Give your full **attention to the person who is addressing the class.** If directions are given, follow them the first time.
- ➔ **Proper use of language is expected.** Swearing or vulgar language is not appropriate.
- ➔ **Inappropriate items**, such as food, beverages, makeup, etc. seen in class will be confiscated.
- ➔ Work on the assigned task **diligently** and work to the best of your ability.

Tardiness

- Entering the class after the bell is a tardy. It **will** be recorded on your point sheets.
- Move quickly to your seat without disturbing the rest of the class

Absences

- *Try not to be absent; you will fall behind, jeopardizing your ability to finish the course and your grade will be affected. In-lab contact time is essential for your success.*

Attendance is the #1 factor predicting passing rates in *EDGENUITY* classes!

- If you are absent, you will need to move through the material faster to make up for the lost time and/or will be required to work through the material via the library and/or home access.
- **If you are absent, plan time to make up the work indicated to get you current on the *Edgenuity* Assignment Calendar!**

OUTSIDE OF CLASS ACCESS /HOMEWORK

- You can access your *EDGENUITY* course **24 hours a day, 7 days a week** at your convenience.
- When in limited access mode at a library or at home, all **quizzes/tests will be automatically “bypassed”** (skipped) within the program. Due to this feature, your progress report will be slightly inaccurate until you log on to the full access classroom computers. But it’s also why you are able to work for **AS LONG AS YOU WOULD LIKE** at ANY time; day or night 😊
- **Click “next activity” to proceed forward past the quiz/test.**

- **Expect to have to work outside of class FOR SURE** during your first few weeks of class due to your own learning curve as you adjust to this mode of learning and the course expectations. After this many students (depending on their subject specific skills) are able to work efficiently in class and never have to access the program outside of class.
- The program is set to prevent cheating. **Do not have any other browsers/tabs open** while doing your work. Doing this will cause your program to error and will prevent you from being able to work.
- Remember to do each of the required elements WELL or be forced to do it over!
- Remember to **bring your notebook back to class** each day if taking it home for outside of class access.

Access Locations:

1] **Home Access** – Any computer with the correct plug-ins (Flash, etc.) can access *Edgenuity*. Just click ‘check plug-ins’ in the bottom right corner of the *Edgenuity* login screen. If you still encounter problems see me for a detailed home access handout.

**I AM HERE TO HELP AND SUPPORT YOU
WE CAN DO THIS!**
