



# SYSTEM-WIDE MASTER PLANNING

Board Work Session

May 17, 2018



# AGENDA

## 1. History / Timeline:

- Preliminary Analysis (April 09<sup>th</sup> – May 1<sup>st</sup>, 2018)
- Listening Sessions
  - Senior Staff/Principals (May 2<sup>nd</sup>)
  - Community Leaders (May 3<sup>rd</sup>)

## 2. Updated Facility Capacity & Operating Costs Analysis:

- Operating Costs
- Building Deferred Maintenance Costs
- Summary of Facility Ratings

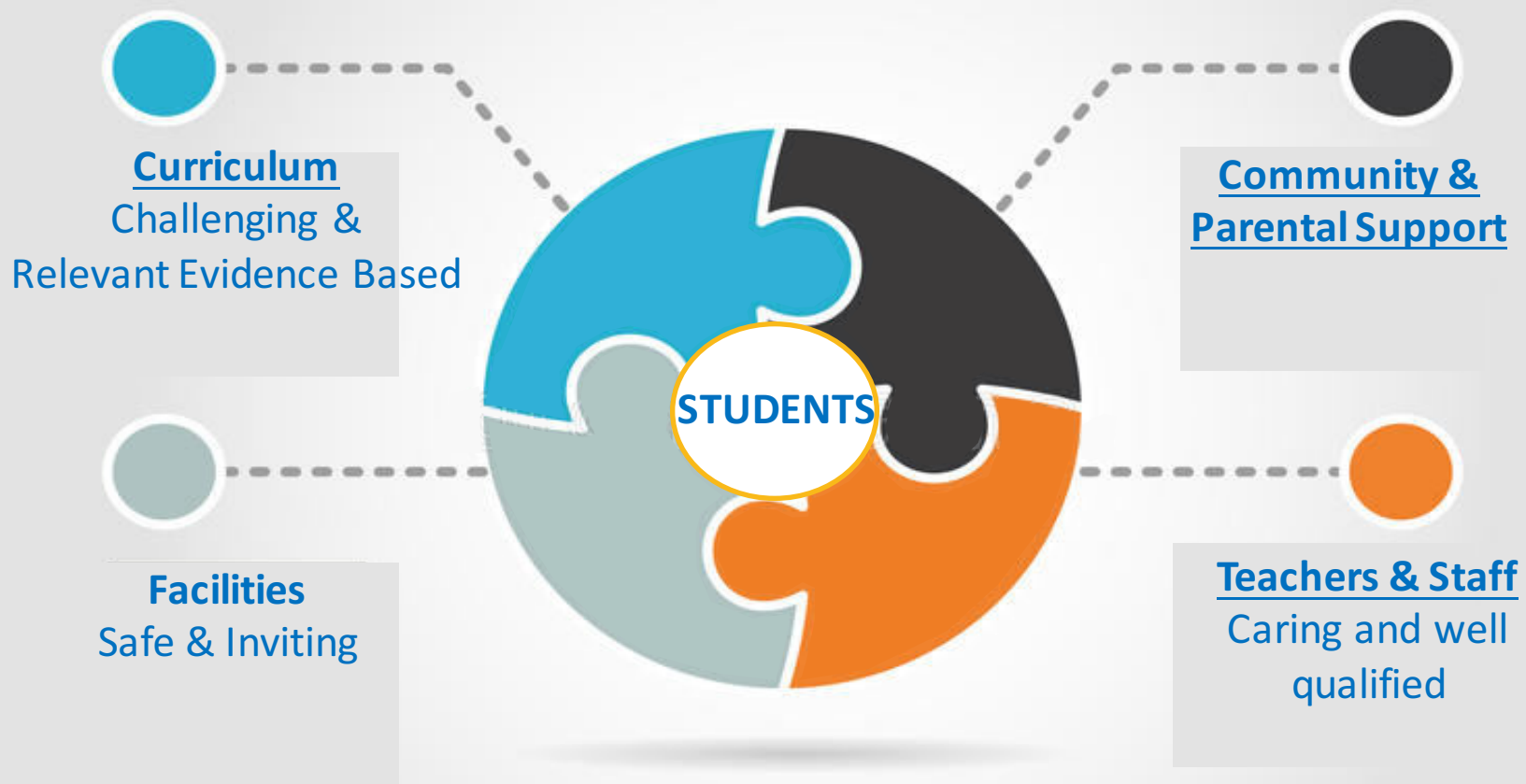
## 3. Top Outcomes By Category:

- Most frequent received from Staff and Community Leaders
- Recommended Outcomes from Superintendent
- **Board Input/Discussion**

## 4. Presentation of Desired Outcomes:

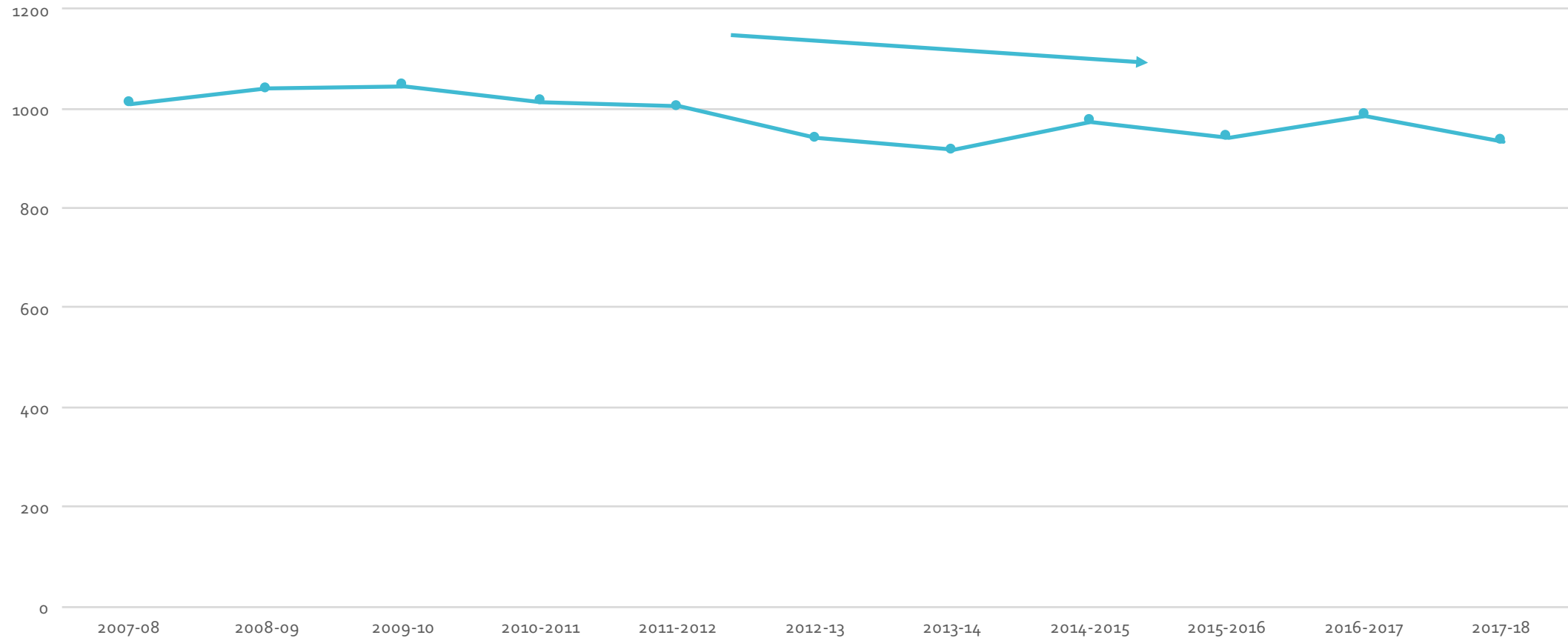
- **Top Desired Outcome from each Category**
- **Board Input/Discussion**

# SYSTEM-WIDE DEMOGRAPHICS

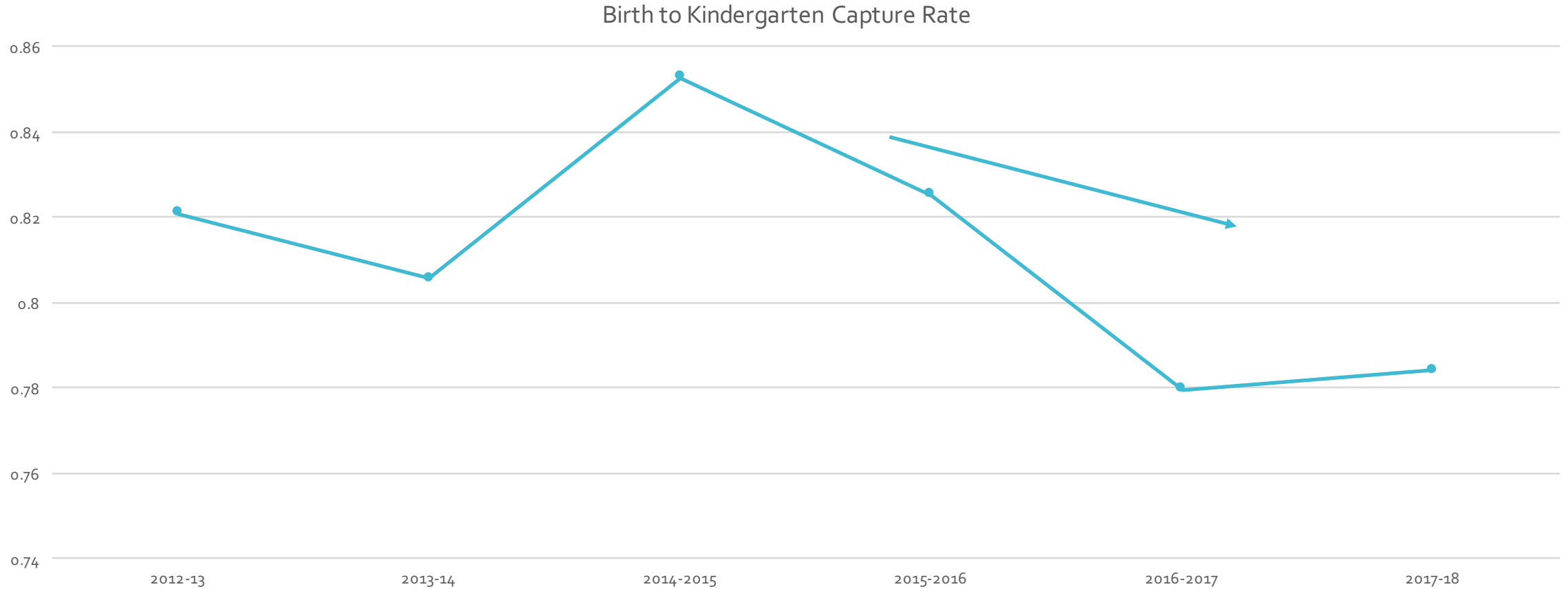


# The Number of Dothan Births is Falling

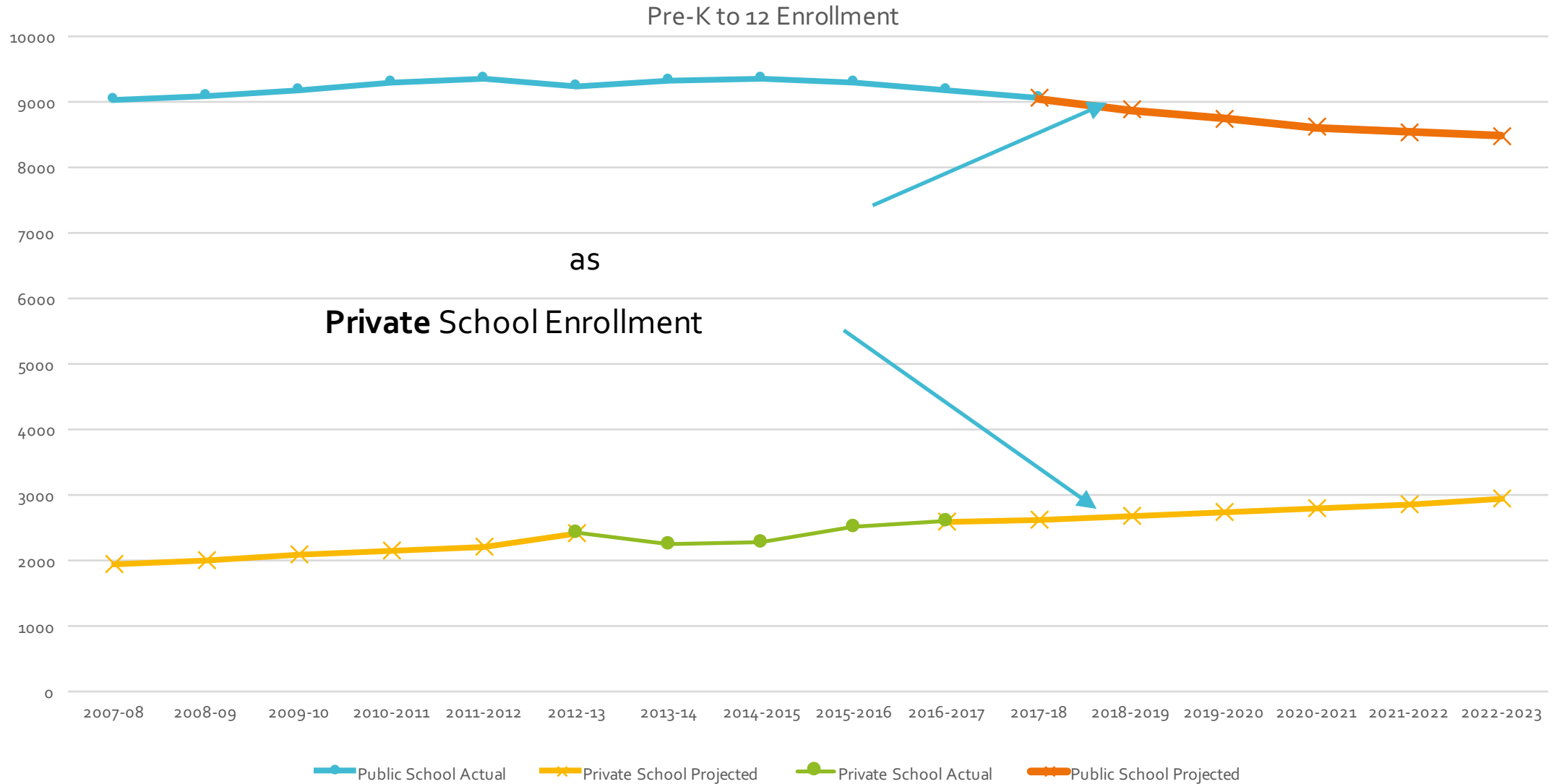
Live Births



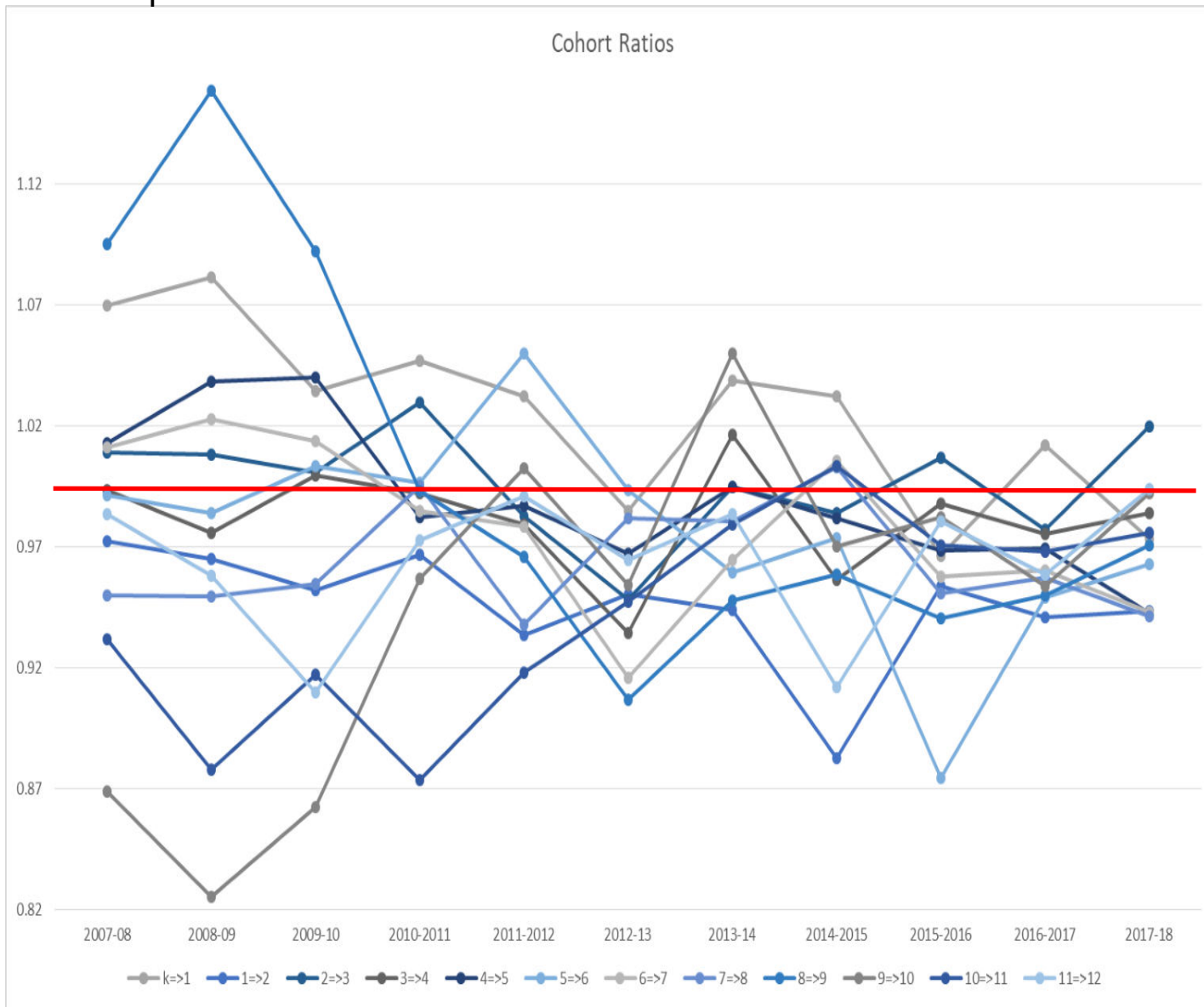
# The Proportion of Births Captured by Public Schools is Declining



# While Public School Decreases Private School Increases



# Capture Rate – a.k.a. Cohort Survival Rate



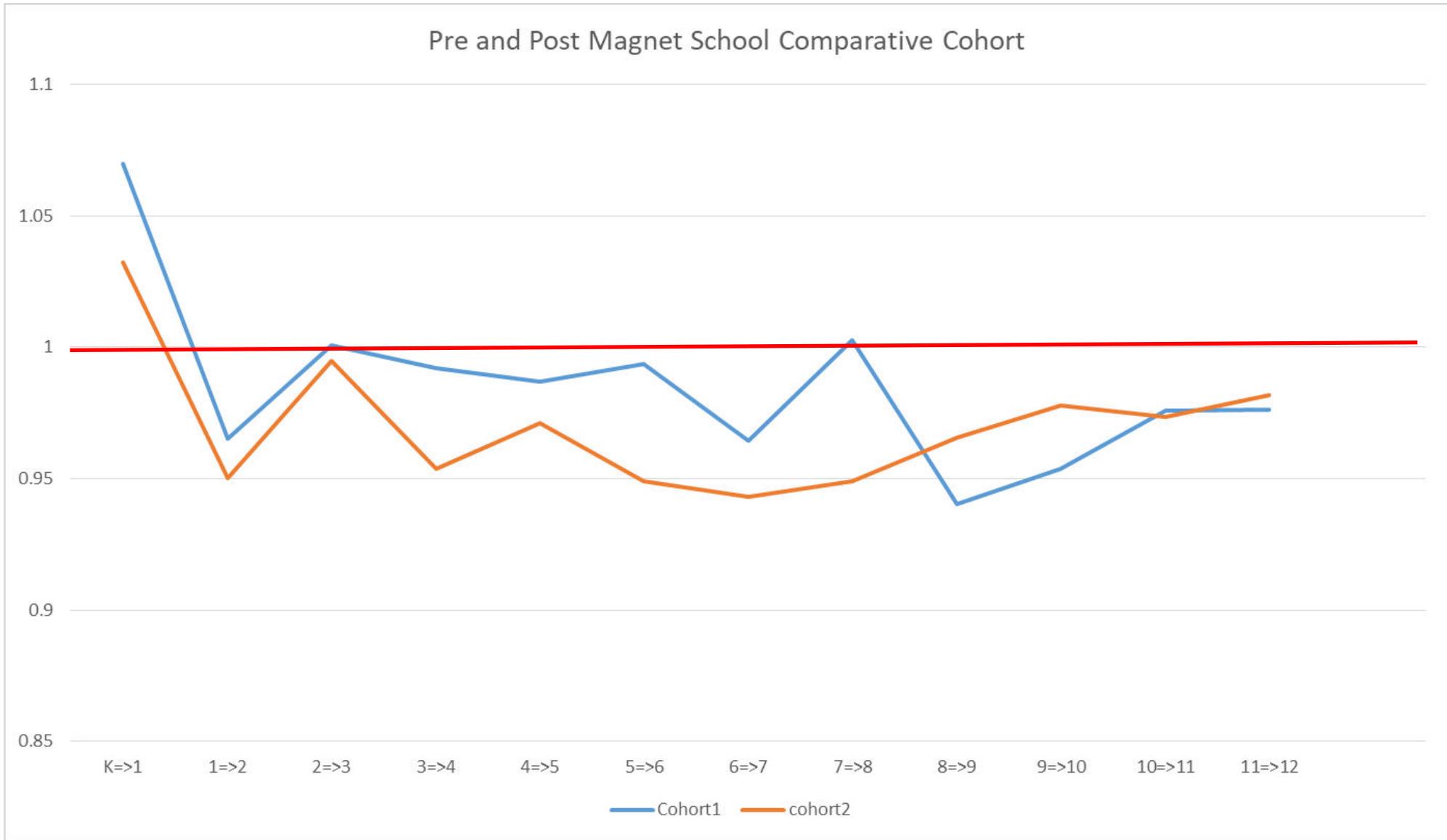
Ten years ago, there was a major retention problem in High School. Between 2007 and 2009 the System immigrated many students from outside the system (Private schools?) in 9<sup>th</sup> grade, only to lose them again at a proportionally high rate in 10<sup>th</sup> and 11<sup>th</sup> grades.

The transition between 8<sup>th</sup> and 9<sup>th</sup> grades became a problem in 2011 and later, dropping below 1.00 at that extended timeframe.

While the K-1 interval adds children to the System, they are doing so at a lower rate than replacement in the last three years with a downward trend over the last ten years. The 1-2 interval has always been lower than 5-6, 6-7, and 7-8. All took a significant reduction in retention rate in the 2015-2016 school year.

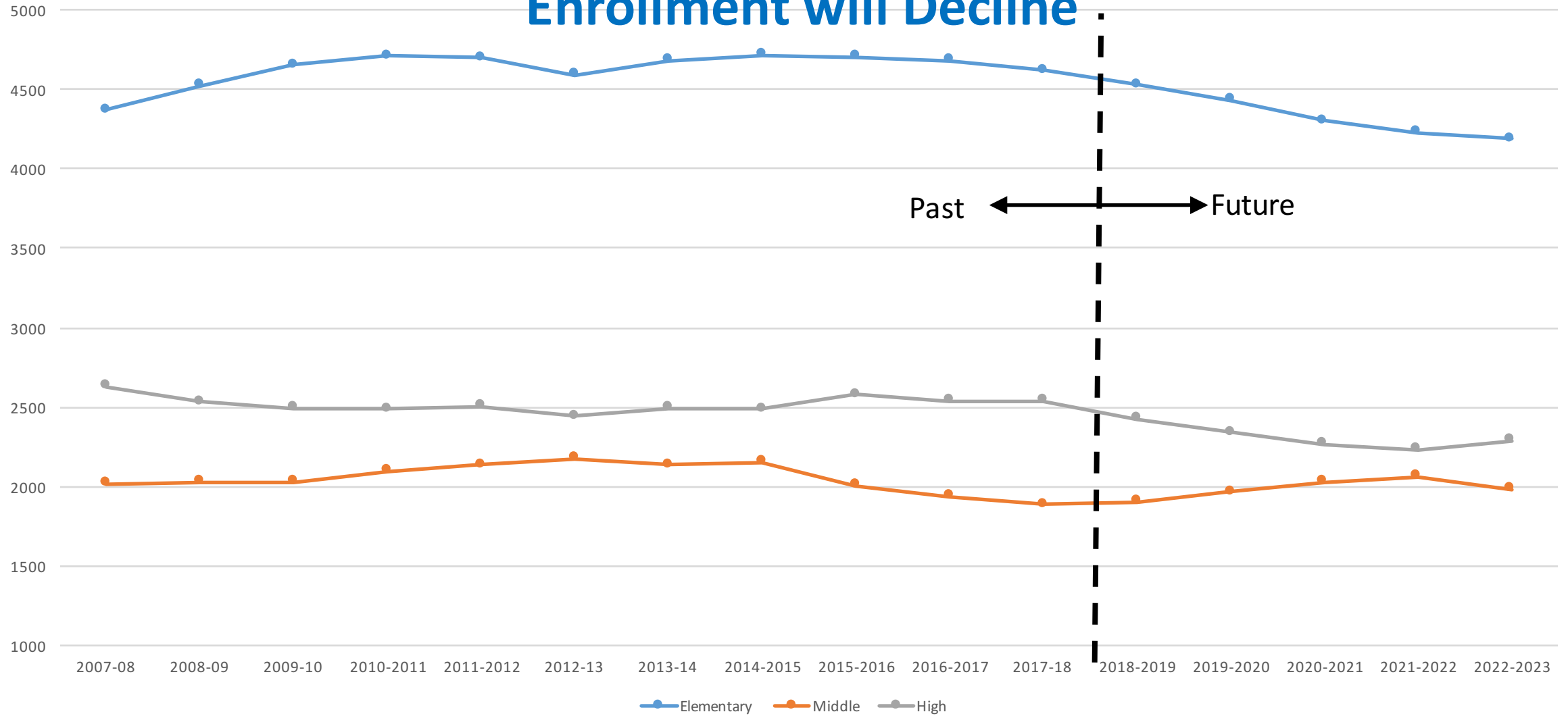
With the exception of two grades, every grade had a reduction in retention rate in the 2012-2013 school year with a rebound in 2013-2014

Pre and Post Magnet School Comparative Cohort

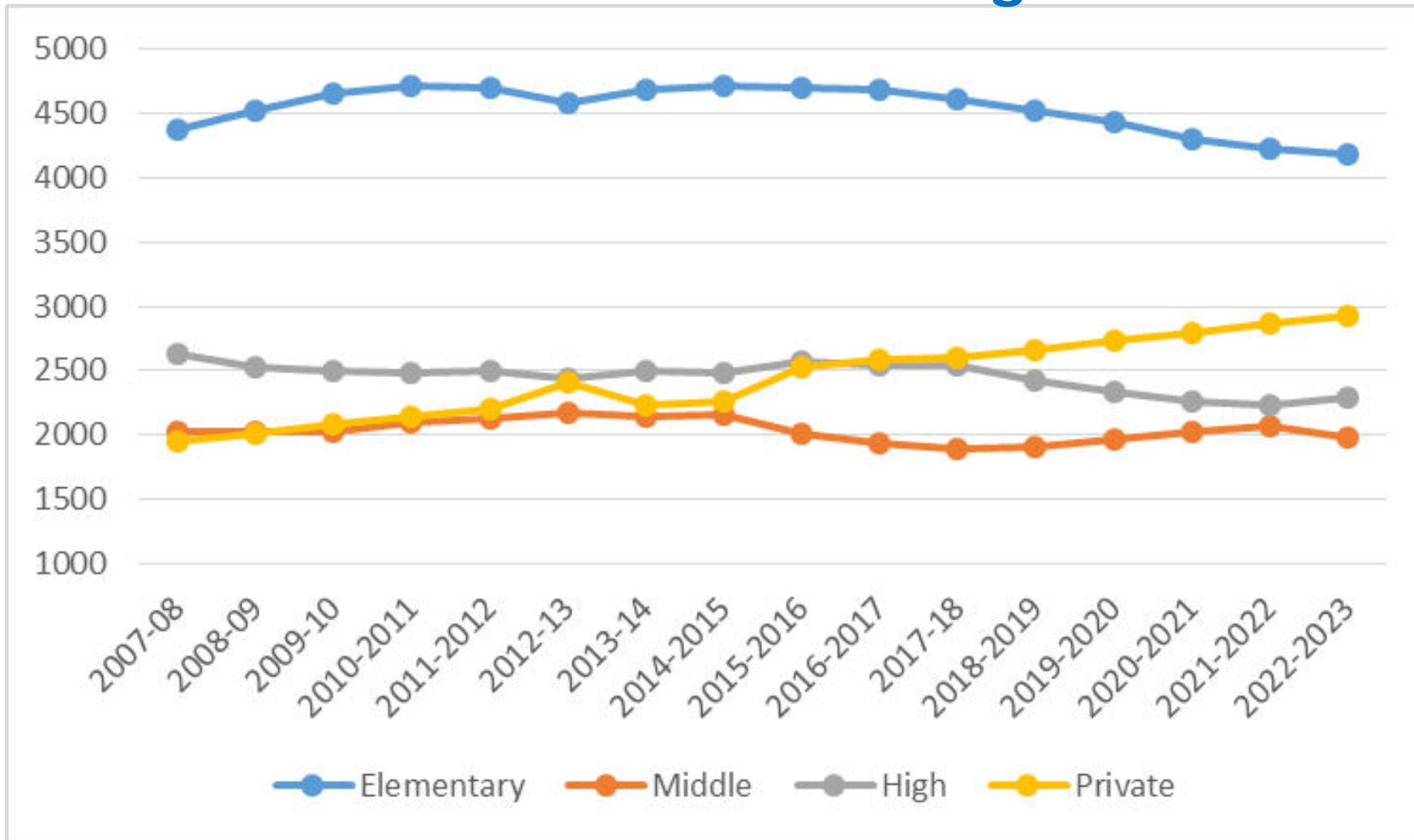




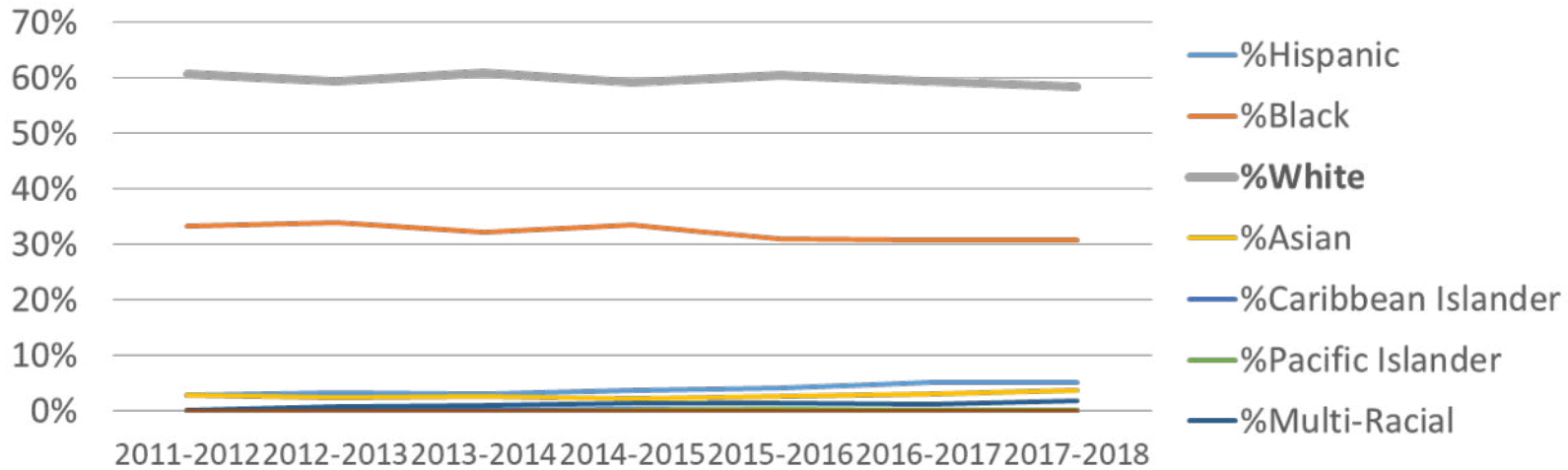
# Elementary School and High School Enrollment will Decline



# Private School Enrollment is on increasing trend



## Magnet School % by Race



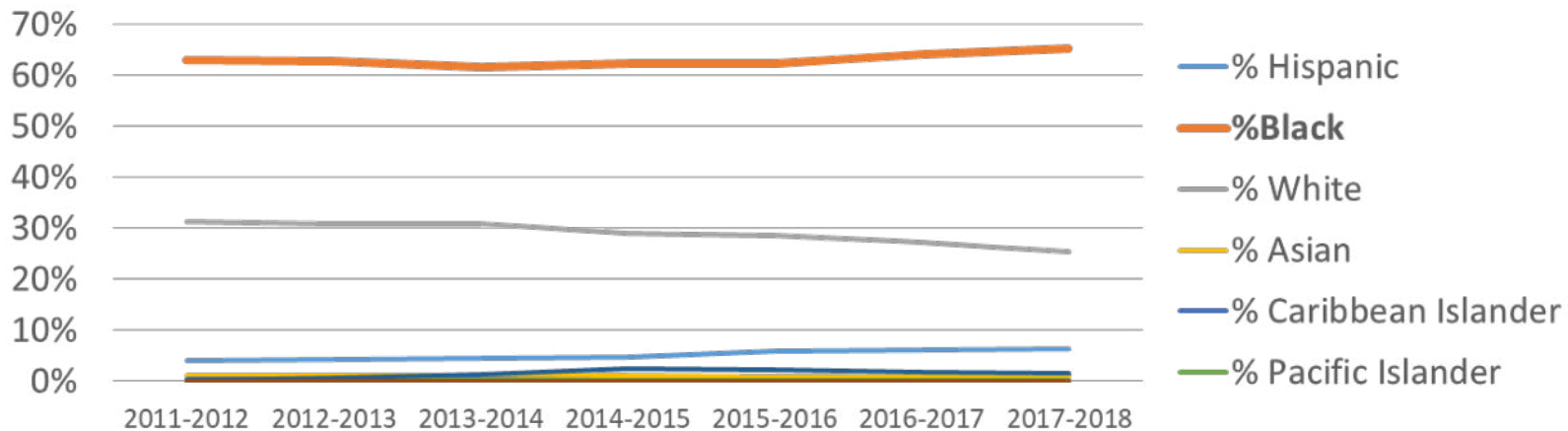
In the case of magnet schools versus the rest of the system, the racial distribution stacks up differently.

Generally, the magnet schools

- Carver,
- Beverlye,
- Montana St., and
- Heard

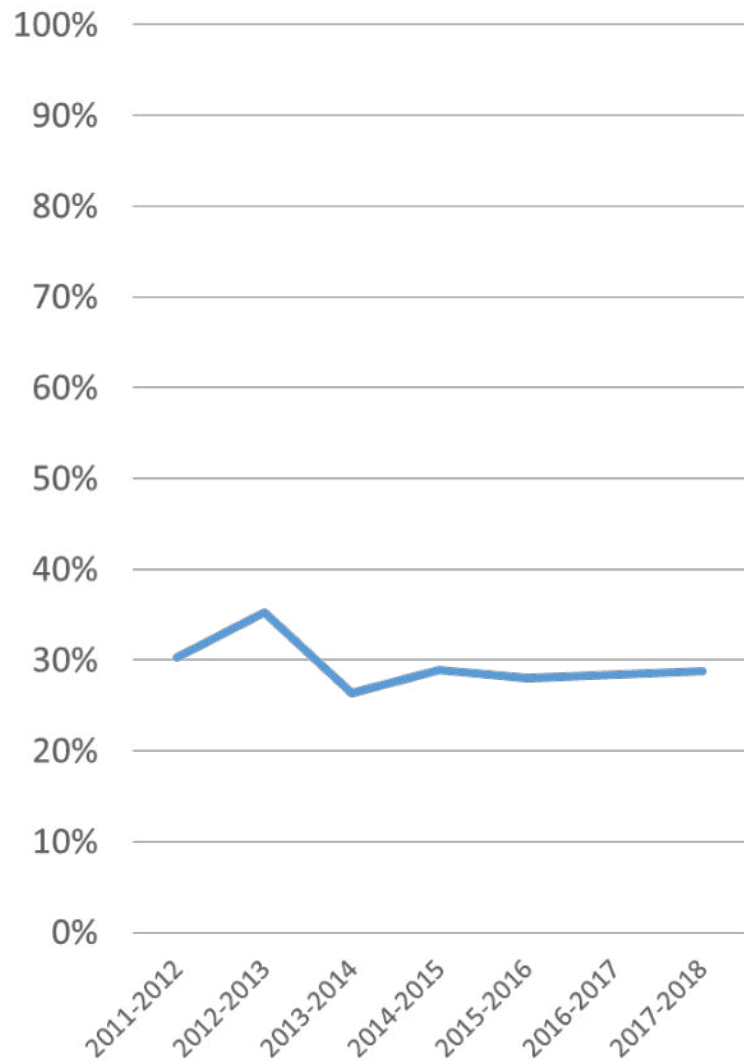
have a **majority Caucasian/White students**

## Other Schools % by Race

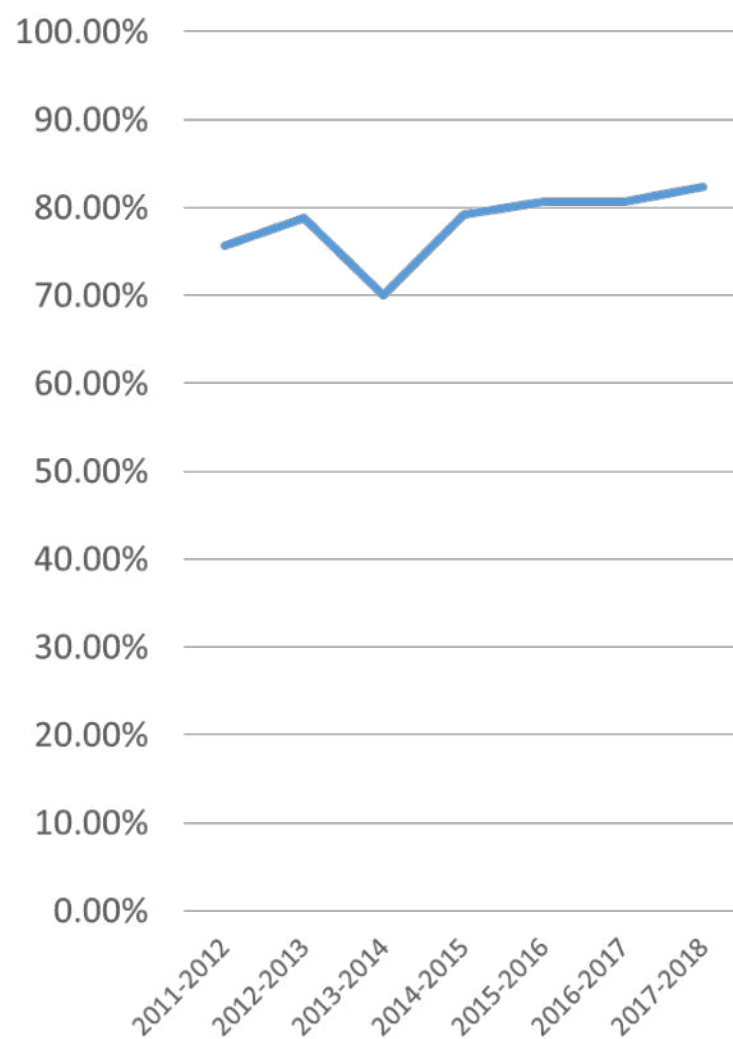


while the rest of the system is **predominantly African American.**

Magnet Schools % Free / Reduced Lunch

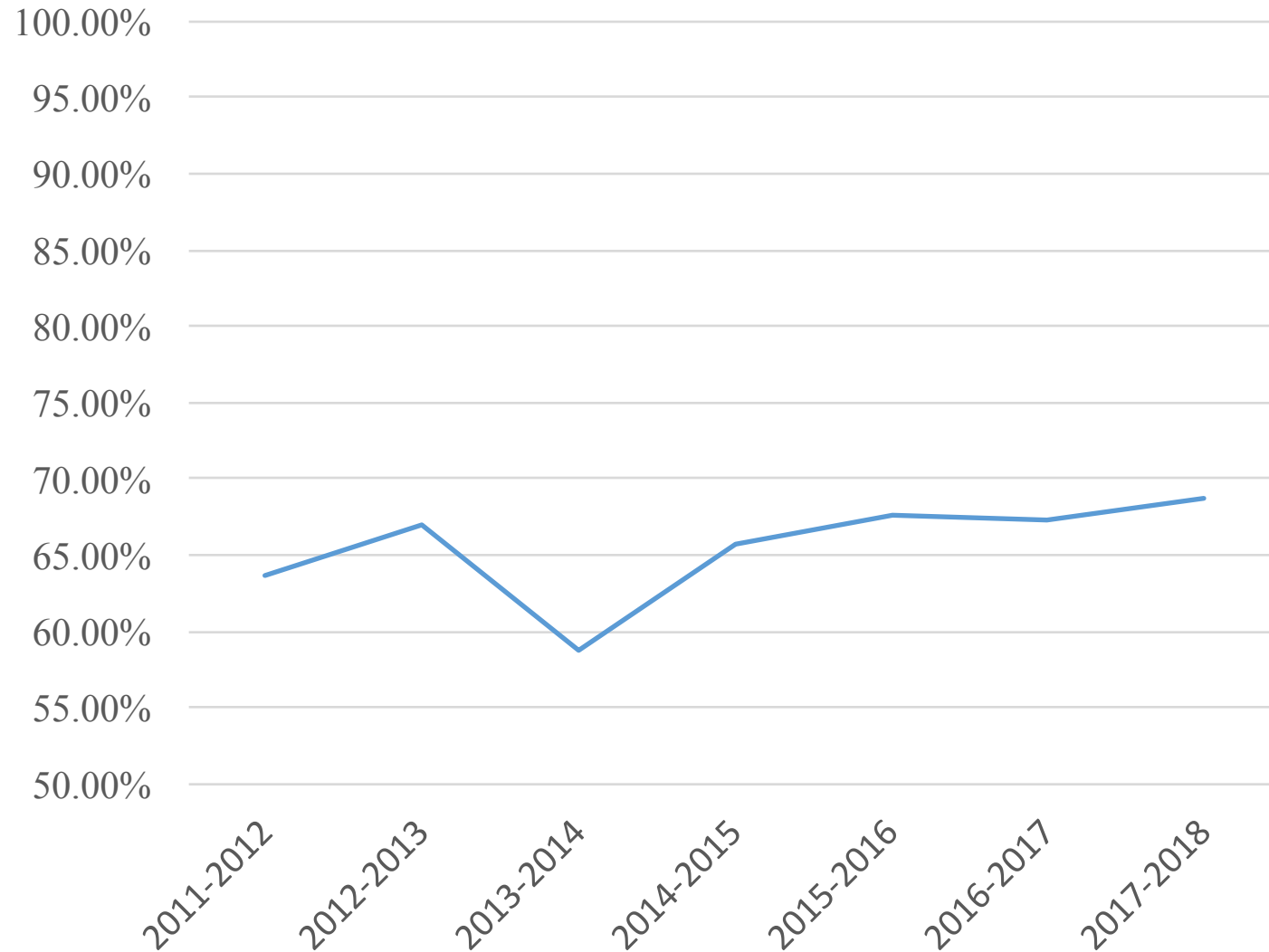


Other Schools % Free/Reduced Lunch



**Free and Reduced Lunch is less frequent in Magnet Schools,** and remains relatively constant as the Free and Reduced Lunch in the other schools rises

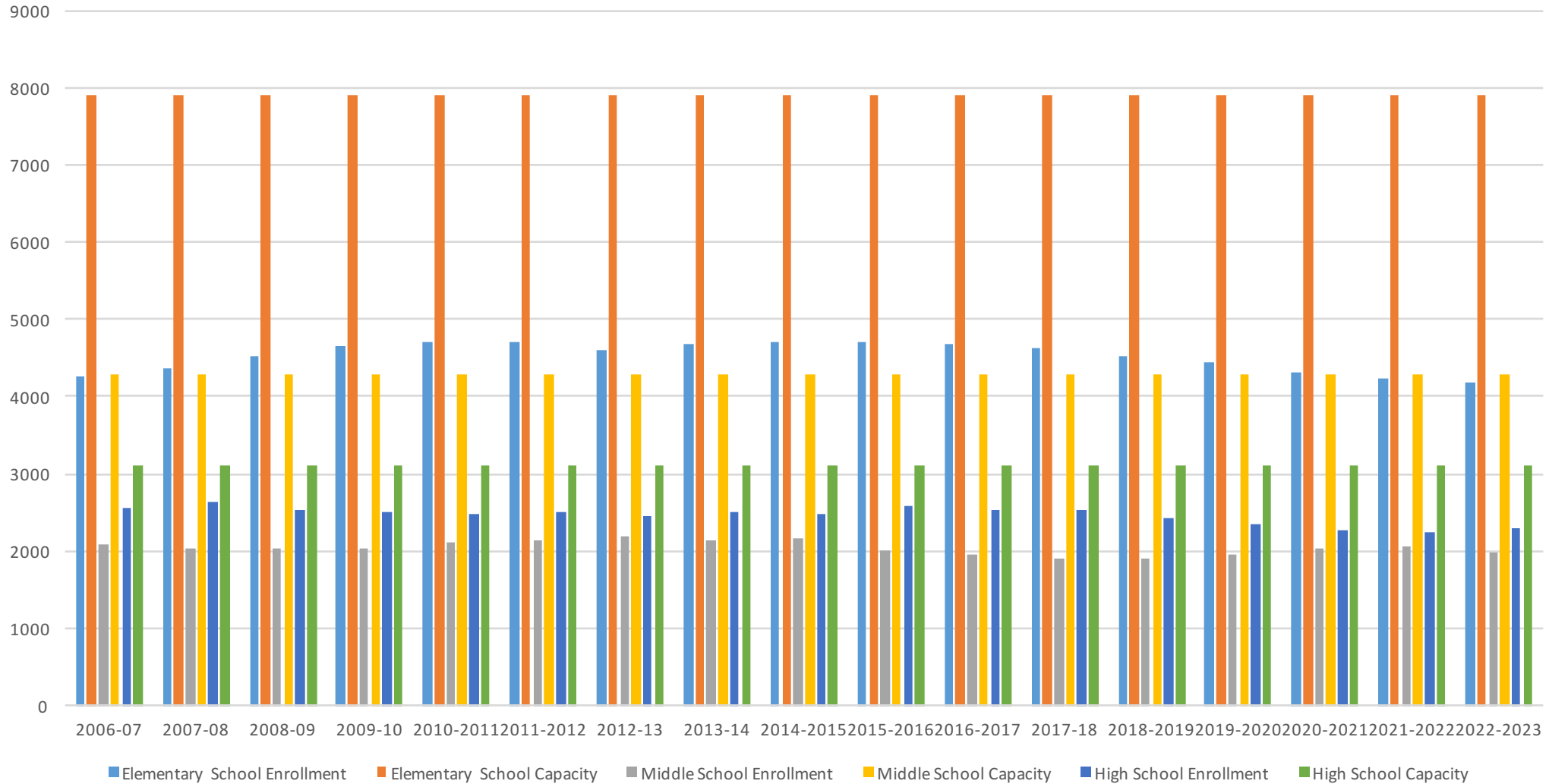
# System Average % Free/Reduced



In general, the system average % Free/Reduced Lunch has been on a steady rise since the 2013-2014 year. Specific statistics for each school revealed that some schools were hovering in the 98%-99% of Free/Reduced Lunch.

# At all levels Capacity is larger than Enrollment

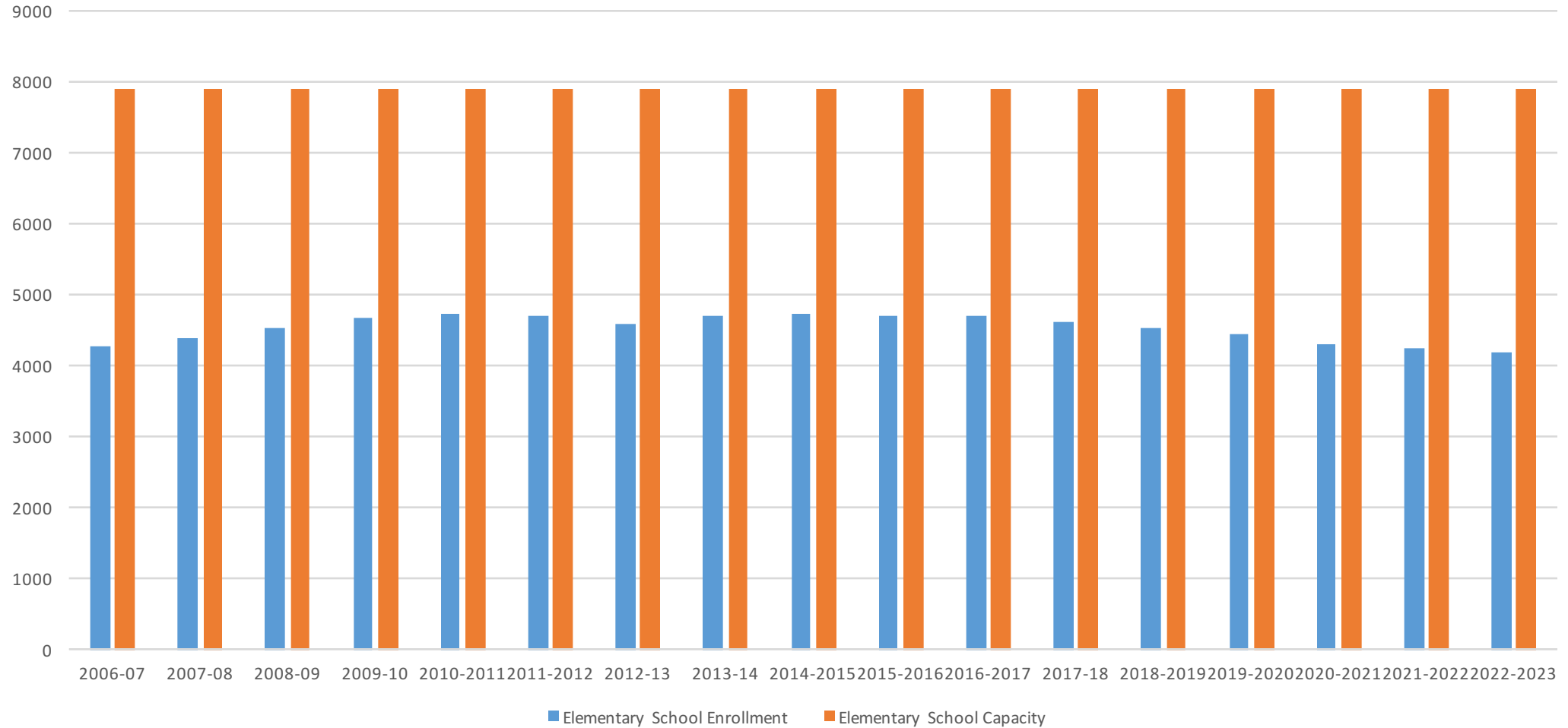
Systemwide Enrollment vs Capacity



# Elementary School Excess Capacity

Current Excess Capacity of **3,276** will grow to **3,701** in Five Years

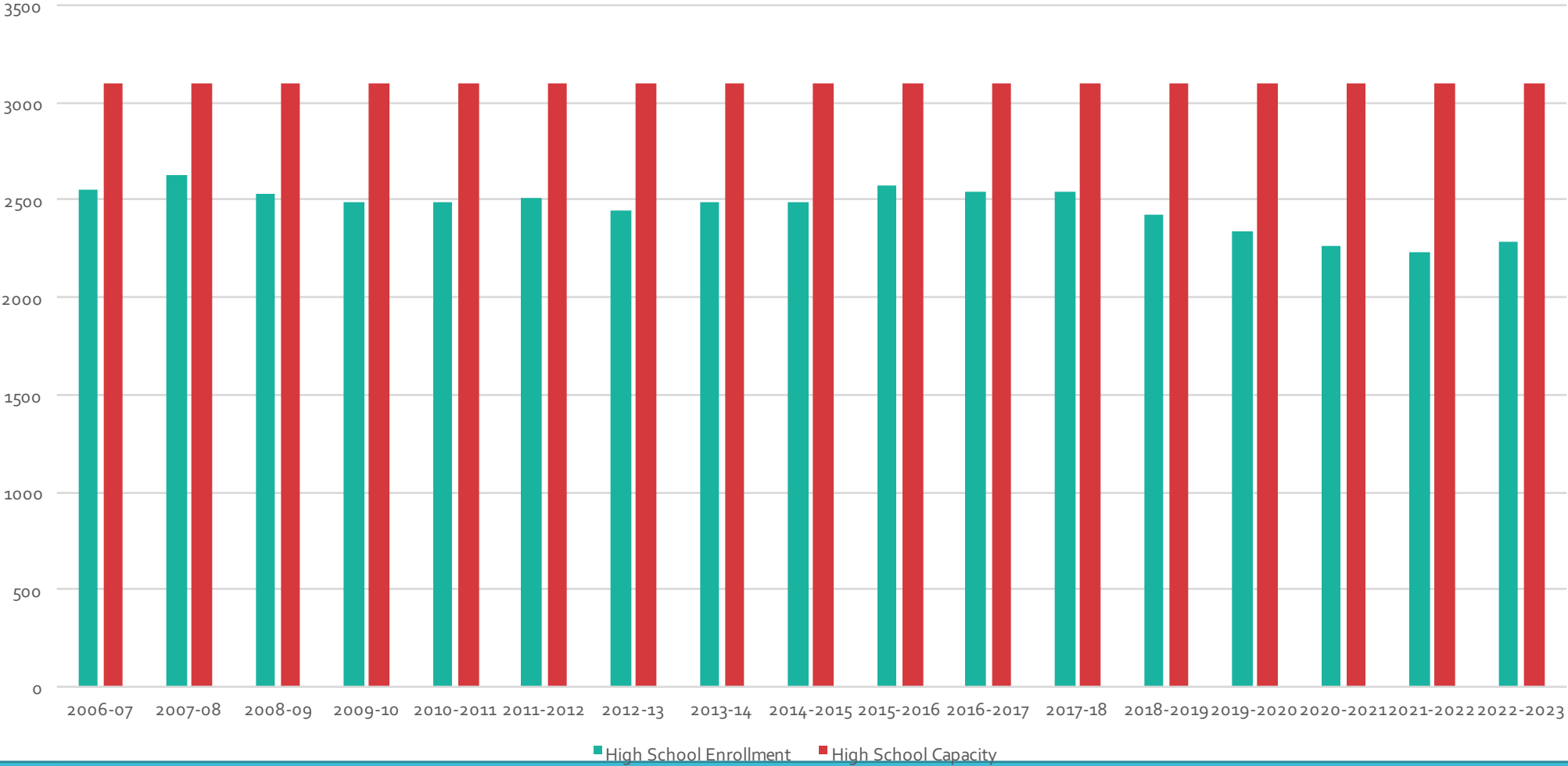
Systemwide Enrollment vs Capacity



# Middle School Excess Capacity

Current Excess Capacity of **2,395** will remain relatively constant raising slightly to **2,301** in Five Years

Systemwide Enrollment vs Capacity

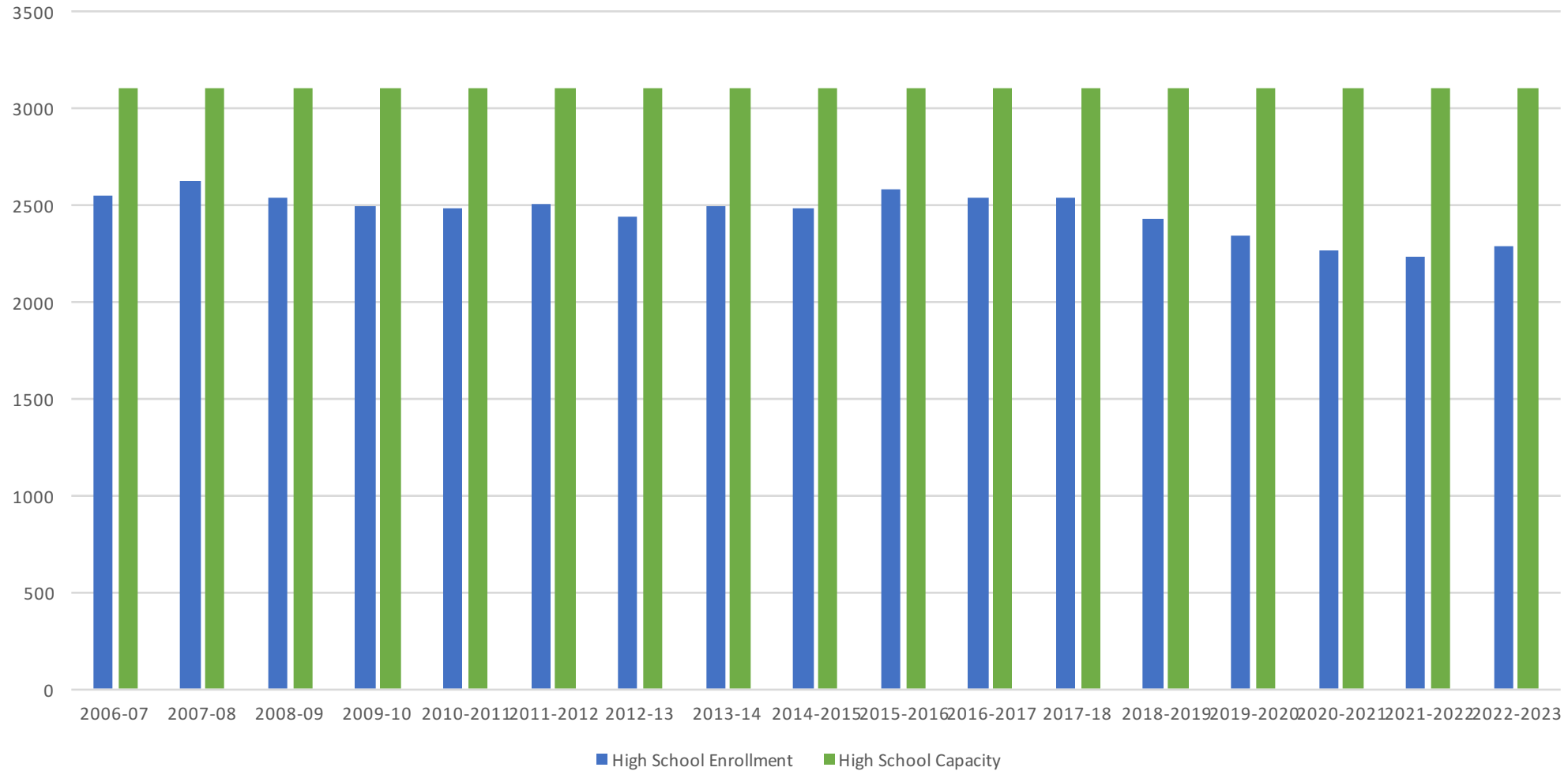




# High School Excess Capacity

Current Excess Capacity of **561** will raise slightly to **812** in Five Years

Systemwide Enrollment vs Capacity



School	2018 Enrollment	Capacity	Enrollment % of Capacity	% of Average Capacity
<b>Elementary</b>	<b>4617</b>	<b>7893</b>	<b>58%</b>	<b>718</b>
Cloverdale ES	341	598	<b>57%</b>	<b>83%</b>
Faine ES	319	667	<b>48%</b>	<b>93%</b>
Girard ES	262	759	<b>35%</b>	<b>106%</b>
Grandview ES	473	782	<b>60%</b>	<b>109%</b>
Heard Magnet	426	621	<b>69%</b>	<b>87%</b>
Hidden Lake ES	549	828	<b>66%</b>	<b>115%</b>
Highlands ES	502	851	<b>59%</b>	<b>119%</b>
Kelly Springs ES	416	851	<b>49%</b>	<b>119%</b>
Montana ST Magnet	496	575	<b>86%</b>	<b>80%</b>
Morris Slingluff ES	364	598	<b>61%</b>	<b>83%</b>
Selma St ES	469	759	<b>62%</b>	<b>106%</b>
			<b>Over / Under Avg</b>	<b>+/- 15%</b>
<b>Middle</b>	<b>1889</b>	<b>4480</b>	<b>42%</b>	<b>1120</b>
Beverlye Magnet	447	1176	<b>38%</b>	<b>105%</b>
Girard Middle	490	1036	<b>47%</b>	<b>93%</b>
Honeysuckle Middle	519	1176	<b>44%</b>	<b>105%</b>
Carver Magnet	433	1092	<b>40%</b>	<b>98%</b>
			<b>Over / Under Avg</b>	<b>+/- 5%</b>
<b>High</b>	<b>2539</b>	<b>3100</b>	<b>82%</b>	<b>1550</b>
Dothan High School	1205	1500	<b>80%</b>	<b>97%</b>
Northview High School	1334	1600	<b>83%</b>	<b>103%</b>

# Enrollment and Capacity

Schools Vary by % Occupied, Capacity, Enrollment

**Red** indicated Under Average Performance

**Orange** indicates Medium Average Performance

**Yellow** indicates Over Average Performance

**Green** indicates Low Costs

# System-wide Excess Capacity

## Elementary

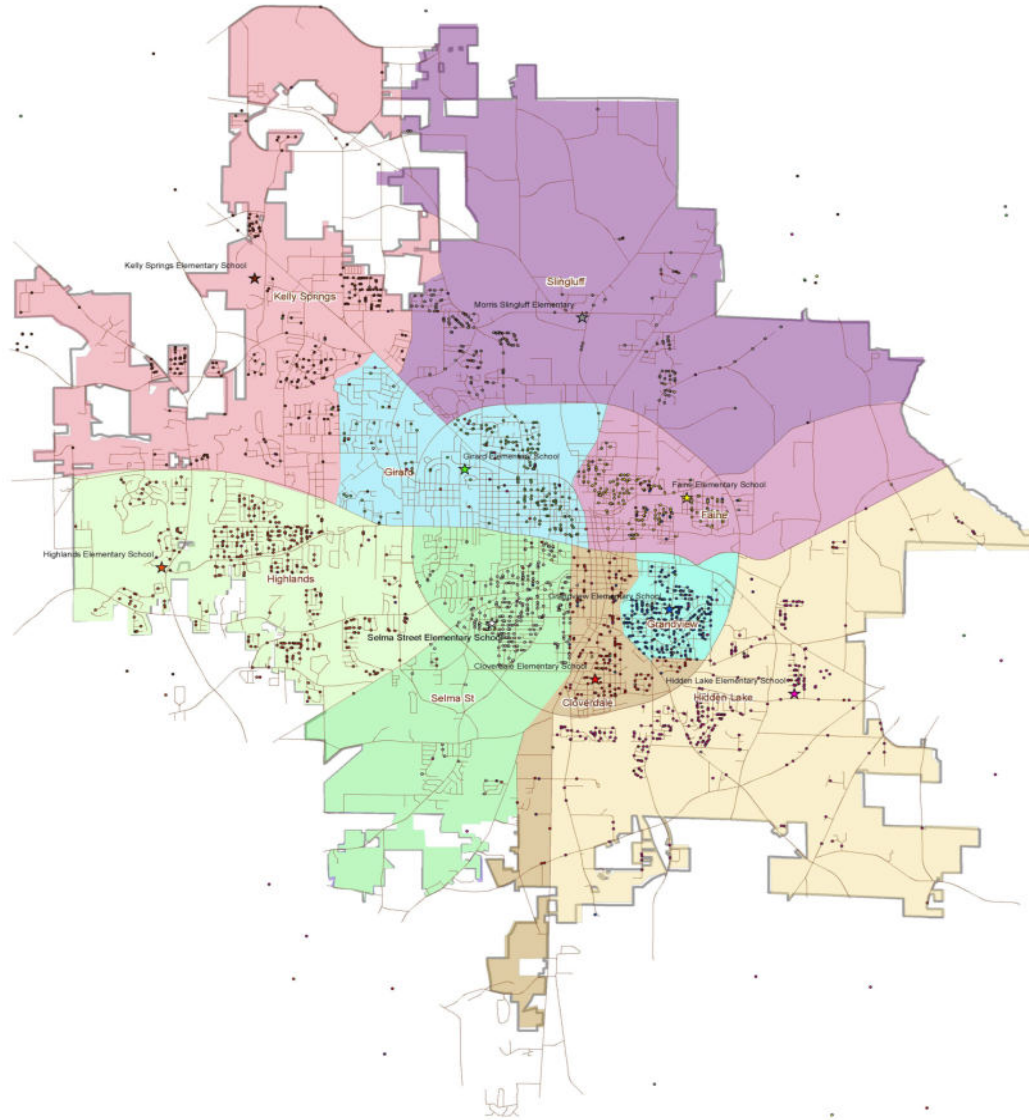
- **3,276** - Excess Capacity in Elementary Schools
- 6.56 - Number of average sized schools needed if filled to capacity
- **6 each** - Amount of schools with highest capacity needed to fill current enrollment

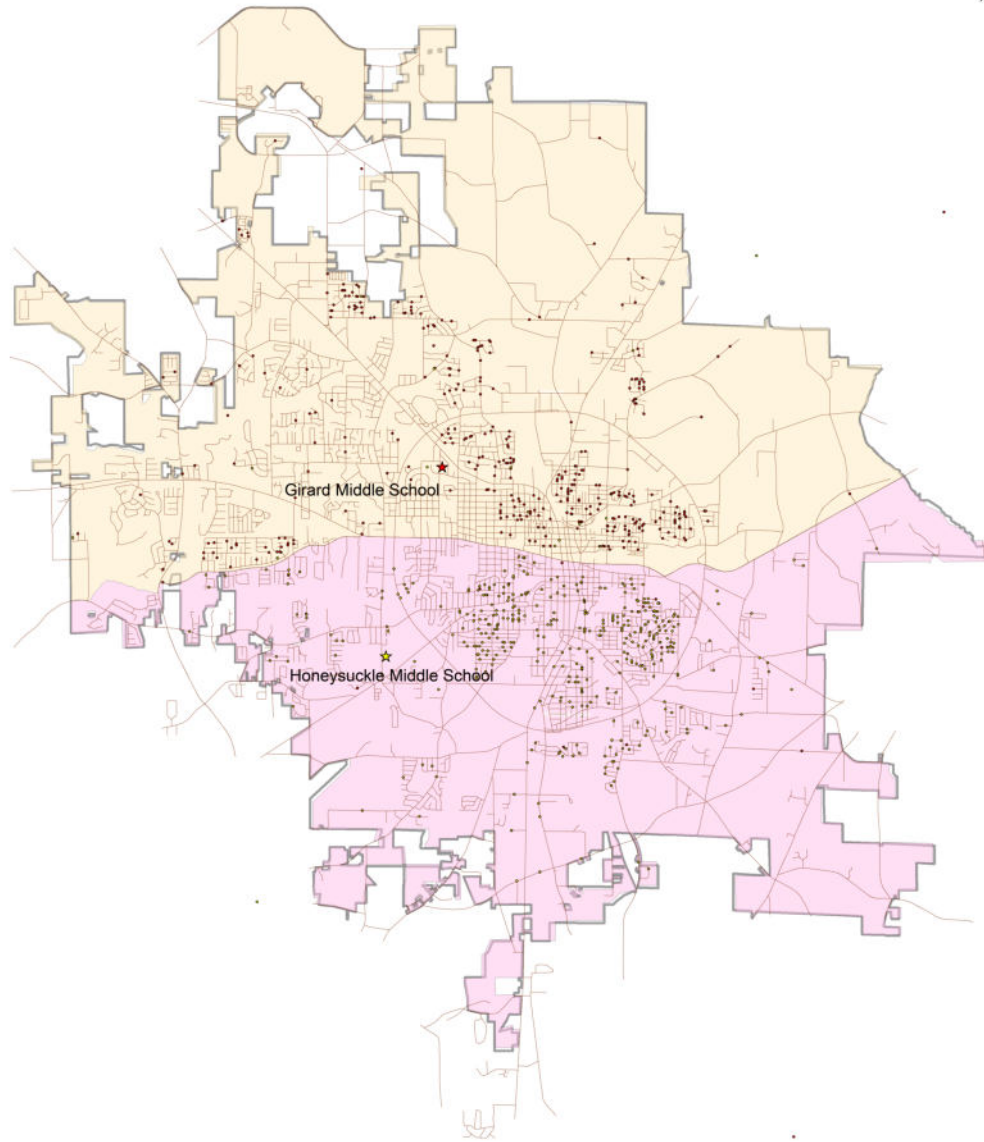
## Middle

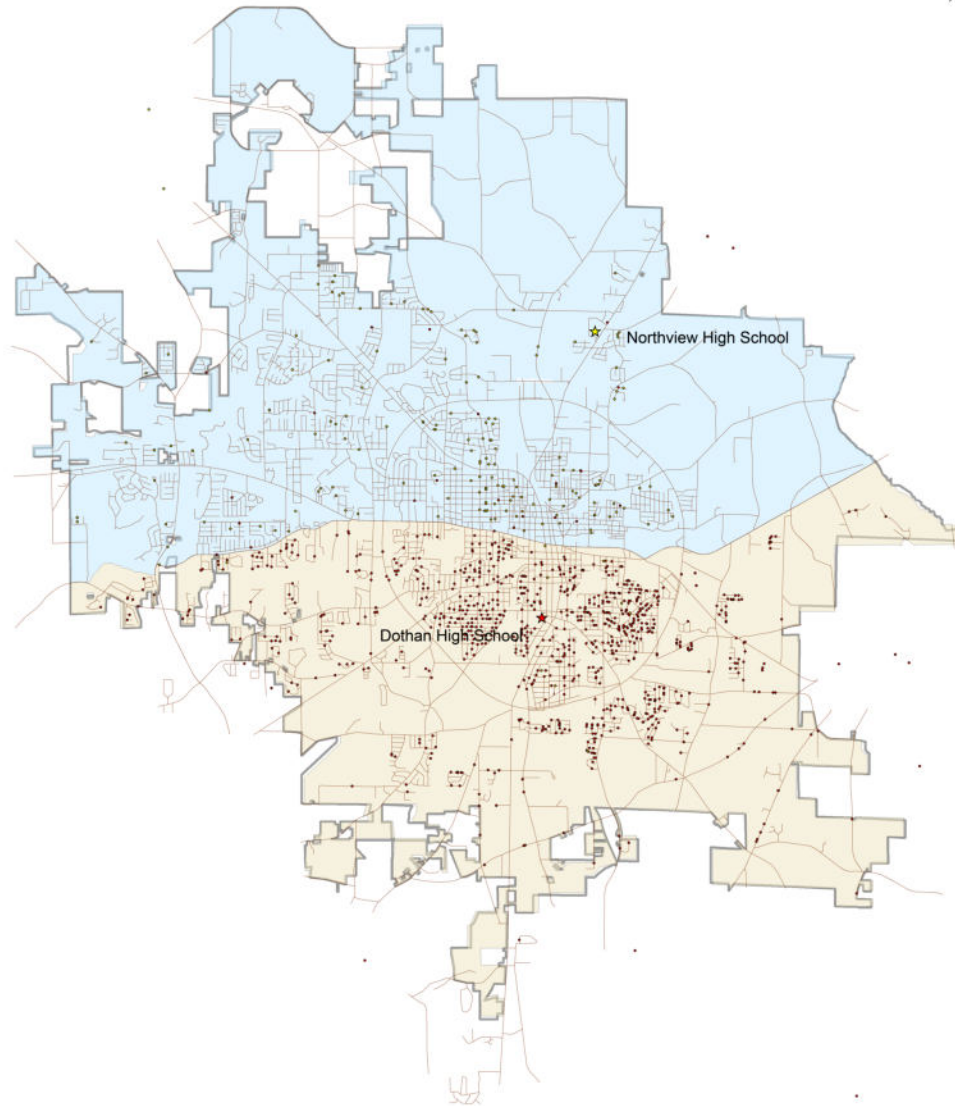
- **2,395** - Excess Capacity in Middle Schools
- 1.69 - Number of average sized schools needed if filled to capacity
- **2 each** - Amount of schools with highest capacity needed to fill current enrollment

## High

- **561** - Excess Capacity in High Schools
- 2 - Number of average sized schools needed if filled to capacity
- **2 each** - Amount of schools with highest capacity needed to fill current enrollment









# Comparative Site Area Rating

School	School Type	Enrollment	Optimal Capacity	5 Acre + 1 Acre / 100 students	Site Area Rating
		K-2	21		
		3-5	25		
		6-8	28		
		9-12	30		
Cloverdale Elementary School	Elementary	355	598	10.98	11
Faine Elementary School	Elementary	341	667	11.67	8
Girard Elementary School	Elementary	260	759	12.59	13
Grandview Elementary School	Elementary	470	782	12.82	12
Heard Magnet School	Elementary	427	621	11.21	10
Hidden Lake Elementary School	Elementary	549	828	13.28	30
Highlands Elementary School	Elementary	492	851	13.51	17
Kelly Springs Elementary School	Elementary	453	851	13.51	24
Montana St. Magnet School	Elementary	496	575	10.75	5
Morris Slingluff Elementary School	Elementary	390	598	10.98	17
Selma Street Elementary	Elementary	472	759	12.59	10
				<b>Acre per 100 Students</b>	
Beverlye Magnet School	Middle	446	1176	21.76	20
Carver Magnet School	Middle	434	1092	20.92	17
Girard Middle School	Middle	497	1036	20.36	16
Honeysuckle Middle School	Middle	514	1176	21.76	20
				<b>30 Acres +1 Acre/100 Students</b>	
Dothan High School	High	1202	1500	45	25
Northview High School	High	1358	1600	46	64

**Red** indicated Under Average site size  
**Orange** indicates Medium Average site size  
**Yellow** indicates Over Average Performance  
**Green** indicates proper acreage

# Comparative Operating Costs Rating

**Red** indicates high cost per unit  
**Orange** indicates Higher than Average cost per unit  
**White** indicates near average performance  
**Yellow** indicates better than average performance  
**Green** indicates far better than average performance

School	Utilities	Utility Cost/SF	7 Year Average Maintenance and Repair	Maintenance and Repair/SF	Admin Costs	Admin Cost/Student	Total Operating Cost
<b>Elementary</b>							
Cloverdale Elementary School	\$ 62,081	\$1.44	\$ 50,146	\$1.16	\$ 524,747	\$ 1,538.85	\$ 636,973
Faine Elementary School	\$ 51,518	\$1.23	\$ 38,870	\$0.93	\$ 442,855	\$ 1,388.26	\$ 533,244
Girard Elementary School	\$ 46,206	\$1.07	\$ 26,758	\$0.62	\$ 552,123	\$ 2,107.34	\$ 625,087
Grandview Elementary School	\$ 58,977	\$1.26	\$ 59,617	\$1.27	\$ 495,062	\$ 1,046.64	\$ 613,656
Heard Magnet School	\$ 45,597	\$0.99	\$ 33,597	\$0.73	\$ 470,374	\$ 1,104.17	\$ 549,569
Hidden Lake Elementary School	\$ 98,449	\$1.37	\$ 21,221	\$0.29	\$ 478,102	\$ 870.86	\$ 597,771
Highlands Elementary School	\$ 83,855	\$1.16	\$ 26,462	\$0.37	\$ 511,077	\$ 1,018.08	\$ 621,394
Kelly Springs Elementary School	\$ 122,330	\$1.67	\$ 47,813	\$0.65	\$ 520,437	\$ 1,251.05	\$ 690,579
Montana St. Magnet School	\$ 41,690	\$0.92	\$ 32,264	\$0.71	\$ 388,945	\$ 784.16	\$ 462,899
Morris Slingsluff Elementary School	\$ 84,557	\$1.36	\$ 31,623	\$0.51	\$ 588,735	\$ 1,617.40	\$ 704,915
Selma Street Elementary	\$ 53,239	\$1.15	\$ 49,846	\$1.08	\$ 451,116	\$ 961.87	\$ 554,201
<b>Middle</b>							
Carver Magnet School	\$ 57,824	\$0.71	\$ 62,560	\$0.76	\$ 503,238	\$ 1,162.21	\$ 623,622
Beverlye Magnet School	\$ 109,397	\$0.90	\$ 68,296	\$0.56	\$ 563,638	\$ 1,260.93	\$ 741,331
Girard Middle School	\$ 73,638	\$1.10	\$ 55,474	\$0.83	\$ 788,391	\$ 1,608.96	\$ 917,503
Honeysuckle Middle School	\$ 106,695	\$0.88	\$ 50,011	\$0.41	\$ 714,129	\$ 1,375.97	\$ 870,836
<b>High</b>							
Dothan High School	\$ 232,394	\$1.21	\$ 151,489	\$0.79	\$ 1,462,125	\$ 1,213.38	\$ 1,846,009
Northview High School	\$ 349,857	\$1.67	\$ 572,818	\$2.74	\$ 1,337,975	\$ 1,002.98	\$ 2,260,650



# Preliminary Comparative Building Conditions

School	School Type	Year Built	Latest Building Built	Last Renovation	Bldg Condition	ADA
Cloverdale Elementary School	Elementary	1953	1998	1990	Good	Y
Faine Elementary School	Elementary	1958	1998	1990	Good	Y
Girard Elementary School	Elementary	1953	1998	1990	Good	Y
Grandview Elementary School	Elementary	1958	1998	1990	Good	Y
Heard Magnet School	Elementary	1962	1998	1988	Good	Y
Hidden Lake Elementary School	Elementary	2000	2000	N/A	Good	Y
Highlands Elementary School	Elementary	2000	2000	N/A	Good	Y
Kelly Springs Elementary School	Elementary	1991	1998	N/A	Good	Y
Montana St. Magnet School	Elementary	1953	1988	N/A	Good	N/Y
Morris Slingluff Elementary School	Elementary	2000	2000	N/A	Good	Y
Selma Street Elementary	Elementary	1953	1998	1990	Good	Y
Beverlye Magnet School	Middle	1978	1978	1997	Good	y
Carver Magnet School	Middle	1965	1992	2007	Good to Moderate	Y
Girard Middle School	Middle	1958	1958	1988	Good	Y
Honeysuckle Middle School	Middle	1978	1978	1997	Good	y
Dothan High School	High	1939	1986	1967	Moderate to Severe	N/Y
Northview High School	High	1978	2007	N/A	Good to Moderate	N/Y

**Red** indicated Probable problems  
**Orange** indicates Possible problems  
**White** indicates near average condition  
**Green** indicates good condition

# Qualitative Facility Conditions

SCHOOL	ADA RATING	ROOF RATING	Year Built	Latest Building Built
<b>Elementary</b>				
Cloverdale Elementary School	Medium High Cost	5-10 Year Roof Life	1953	1998
Faine Elementary School	Medium High Cost	New Roof Needed	1958	1998
Girard Elementary School	Medium High Cost	5-10 Year Roof Life	1953	1998
Grandview Elementary School	Medium High Cost	5-10 Year Roof Life/ 15 Year	1958	1998
Heard Magnet School	Small Costs	New Roof Needed	1962	1998
Hidden Lake Elementary School	Medium High Cost	10-15 Year Roof Life	2000	2000
Highlands Elementary School	Medium High Cost	10-15 Year Roof Life	2000	2000
Kelly Springs Elementary School	Medium High Cost	5-10 Year Roof Life/ 15 Year	1991	1998
Montana St. Magnet School	Medium High Cost	10-15 Year Roof Life	1953	1988
Morris Slingluff Elementary School	Medium High Cost	10-15 Year Roof Life	2000	2000
Selma Street Elementary	Medium High Cost	New Roof Needed	1953	1998
<b>Middle</b>				
Carver Magnet School	High Cost	New Roof Needed	1965	1992
Beverlye Magnet School	High Cost	5-10 Year Roof Life	1978	1978
Girard Middle School	High Cost	5-10 Year Roof Life/ 15 Year	1958	1958
Honeysuckle Middle School	High Cost	New Roof Needed	1978	1978
<b>High</b>				
Dothan High School	Not in Survey	New Roof Needed	1939	1986
Northview High School	Not in Survey	15-20 Year Roof Life	1978	2007

Schools Vary by Age of Building, ADA accessibility, Roof needs

**Red** indicates Low Quality Roof, Low ADA Access, Aging Facilities

**Orange** indicates Medium Low Quality Roof, ADA Access, Aging Facilities

**Yellow** indicates Reasonable Age, Quality Roof, ADA access,

**Green** indicates proper ADA, Newer Roof, Newer Facilities

SCHOOL	MECHANICAL COSTS	ROOFING COSTS	ADA COSTS	TOTAL DEFERRED MAINTENANCE COST
<b>Elementary</b>				
Cloverdale Elementary School	\$ 325,000	\$ 330,000	\$ 250,000	\$ 905,000
Faine Elementary School	\$ 400,000	\$ 460,000	\$ 250,000	\$ 1,110,000
Girard Elementary School	\$ 255,000	\$ 420,000	\$ 150,000	\$ 825,000
Grandview Elementary School	\$ 225,000	\$ 320,000	\$ 250,000	\$ 795,000
Heard Magnet School	\$ 200,000	\$ 600,000	\$ 125,000	\$ 925,000
Hidden Lake Elementary School	\$ 250,000	\$ 40,000	\$ 175,000	\$ 465,000
Highlands Elementary School	\$ 250,000	\$ 40,000	\$ 175,000	\$ 465,000
Kelly Springs Elementary School	\$ 150,000	\$ 150,000	\$ 275,000	\$ 575,000
Montana St. Magnet School	\$ 250,000	\$ 40,000	\$ 250,000	\$ 540,000
Morris Slingluff Elementary School	\$ 250,000	\$ 40,000	\$ 155,000	\$ 445,000
Selma Street Elementary	\$ 315,000	\$ 430,000	\$ 250,000	\$ 995,000
<b>Middle</b>				
Carver Magnet School	\$ 600,000	\$ 500,000	\$ 375,000	\$ 1,475,000
Beverlye Magnet School	\$ 780,000	\$ 500,000	\$ 525,000	\$ 1,805,000
Girard Middle School	\$ 250,000	\$ 30,000	\$ 365,000	\$ 645,000
Honeysuckle Middle School	\$ 780,000	\$ 500,000	\$ 525,000	\$ 1,805,000
<b>High</b>				
Dothan High School	\$ 1,325,000	\$ 600,000	Not in Survey	\$ 1,925,000
Northview High School	\$ 375,000	\$ 50,000	Not in Survey	\$ 425,000
<b>Total</b>	<b>\$ 6,980,000</b>	<b>\$ 5,050,000</b>	<b>\$ 4,095,000</b>	<b>\$ 16,125,000</b>

# Quantifiable Facility Conditions

Schools Vary by % Average Capacity, Site Size, Total Operation Cost, and Total Capital Cost

**Red** indicates Under Standard

**Orange** indicates Under Average Performance

**Yellow** indicates Over Average Performance

**Green** indicates Above Standard

# Summary Facilities Rating

School	Total Operating Cost	% of Average Capacity	Existing Site Acreage	Total Deferred Maintenance Cost
<b>Elementary</b>				
Cloverdale Elementary School	\$ 636,973	83%	11	\$ 905,000
Faine Elementary School	\$ 533,244	93%	8	\$ 1,110,000
Girard Elementary School	\$ 625,087	106%	13	\$ 825,000
Grandview Elementary School	\$ 613,656	109%	12	\$ 795,000
Heard Magnet School	\$ 549,569	87%	10	\$ 925,000
Hidden Lake Elementary School	\$ 597,771	115%	30	\$ 465,000
Highlands Elementary School	\$ 621,394	119%	17	\$ 465,000
Kelly Springs Elementary School	\$ 690,579	119%	24	\$ 575,000
Montana St. Magnet School	\$ 462,899	80%	5	\$ 540,000
Morris Slingluff Elementary School	\$ 704,915	83%	17	\$ 445,000
Selma Street Elementary	\$ 554,201	106%	10	\$ 995,000
<b>Middle</b>				
Beverlye Magnet School	\$ 623,622	105%	20	\$ 1,475,000
Carver Magnet School	\$ 741,331	93%	17	\$ 1,805,000
Girard Middle School	\$ 917,503	105%	16	\$ 645,000
Honeysuckle Middle School	\$ 870,836	98%	20	\$ 1,805,000
<b>High</b>				
Dothan High School	\$ 1,846,009	97%	25	\$ 1,925,000
Northview High School	\$ 2,260,650	103%	64	\$ 425,000

**Facilities vary by Annual Operating Costs, Capacity, Site, and Capital Costs**

**Red** indicates High cost/larger deficit

**Orange** indicates Higher than Average Costs/Deficits

**White** indicates near average performance

**Yellow** indicates better than average Costs or slight surplus

**Green** indicates far better than average performance



A series of meetings with held with DCS Central Office Staff, Elementary, Middle, & High School Principals, & Community Leaders. Our Goal was to present our initial findings and request individual Desired Outcomes they wished the Master Planning process to result with.

The following represents the Desired Outcomes that were received during these meetings.

They are broken down in to 6 Main Categories; Financial, Community, Facility, Personnel, Socio-Economic, & Pedagogical.

A work-session was conducted with the Senior DCS Staff to evaluate each Categories Desired Outcomes and determine one overall recommended Desired Outcome for each.

The following represents those provided and that recommendation.

Desired Outcome	Category	Recommended
Focus Financial resources on providing a world class education for all students	Financial	
Specific goals/uses for the money that's "freed up" to serve students	Financial	
\$ match enrollment	Financial	
Better distribution of resources	Financial	
Increase funding for instruction	Financial	

Financial

Desired Outcome	Category	Recommended
<b>More parental involvement in the schools &amp; trust</b>	Community	
Parents need input and communication to trust teachers	Community	
Strong parental involvement programs	Community	
Fewer negative threads on Wiregrass Live	Community	
Reach families that can't come to a public session or rotary meeting	Community	
Consider strategic partnerships with community and non profit groups to fill gaps and to showcase specialized skills and soft skills	Community	
<b>Efficient, Safe &amp; Inviting Facilities that provide world-class education</b>	Facility	
From an IT perspective would like to see technology instructional specialist positions created to aid in technology integration that would increase the ROI and VOI of the technology provided	Facility	
Reduction in building expenses to build capacity for instruction	Facility	
More appropriate use of facility in terms of utility and instruction/technology	Facility	
Safer environment of the school	Facility	
Environment plays a big role in how students view school - Buildings	Facility	

Community

Facility

Desired Outcome	Category	Recommended
<b>Positive rapport between Staff/Students/Leadership and alignment of professional growth to support positive outcomes.</b>	<b>Personnel</b>	
Monitoring and training for new teachers	Personnel	
Increase the support staff like counselors to develop rapport with students	Personnel	
Teachers deserve support, development, and placement (sense of place?) within their work place	Personnel	
Teacher Growth and input	Personnel	
Fewer teacher openings	Personnel	
Support for educators should be top priority	Personnel	
Teacher pay and professional development is crucial	Personnel	
<b>Balance the demographics and socio-economic make-up so that all students receive high quality equitable education.</b>	<b>Socio-Economic</b>	
Restructure schools so that demographics are equal in all schools. (more focus on all students, less separation of haves and have nots)	Socio-Economic	
More community trust	Socio-Economic	
Private school students returned to DCS	Socio-Economic	
Restructured zones and school facility spaces that more equally normalize/balance demographics	Socio-Economic	
Racial and socio-economic equity	Socio-Economic	
Balance racially and economically in the schools	Socio-Economic	
Students deserve best possible education across racial and socioeconomic lines	Socio-Economic	
Focus on equity in the system - progressive and high quality education for all	Socio-Economic	
Racial segregation of magnet schools and attitudes of educators about the potential of students at non-magnet schools	Socio-Economic	

Personnel

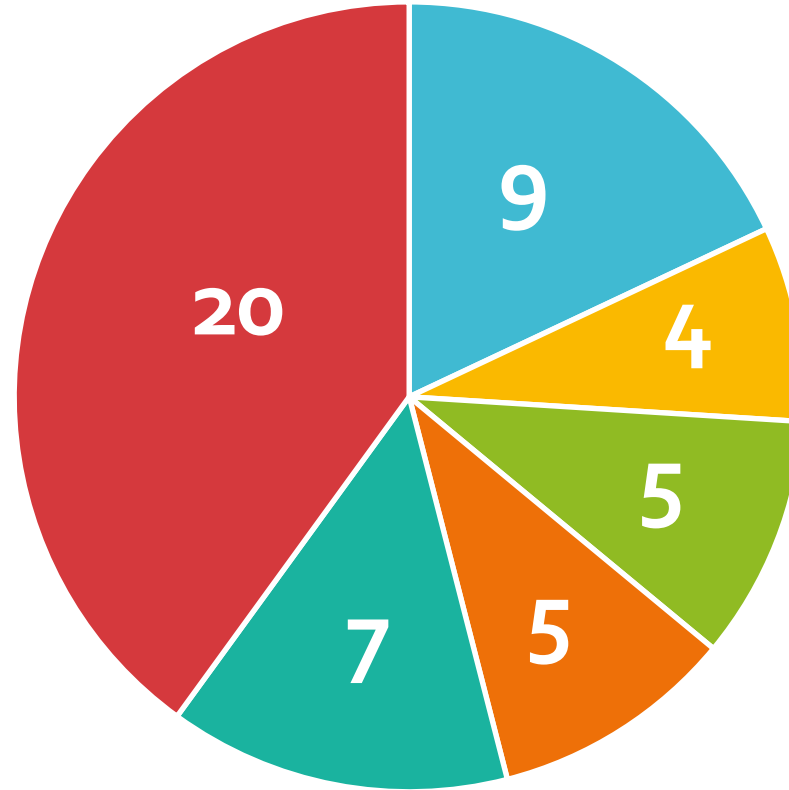
Socio-Economic

Desired Outcome	Category	Recommended
<b>Develop High Quality Instructional framework and delivery systems aligned with buildings and resources to maximize positive student learning.</b>	<b>Pedagogical</b>	
Possible early childhood programs (pre-k programs grades 3-6)	Pedagogical	
Discipline deans at middle and high so Admin have more opportunities to be true instruction leaders	Pedagogical	
More equalized balance of high quality teachers at each site	Pedagogical	
Better use of "magnet" school	Pedagogical	
More appropriate use for special ed, EL, LINC	Pedagogical	
More opportunities for LRE on continuum	Pedagogical	
Magnet Programs in all or most schools not a school by itself	Pedagogical	
Standalone Technology Center	Pedagogical	
IB school for students who wish to attend	Pedagogical	
Separate 8th / 9th grade academy	Pedagogical	
Year round schools (extended day for instruction or stagger schedule of classes)	Pedagogical	
Classroom to career development and plan	Pedagogical	
Qualified teachers for core education areas and AP classes	Pedagogical	
Maintenance of class size to optimize learning	Pedagogical	
Enrollment #'s rising	Pedagogical	
Better test scores in middle and high schools	Pedagogical	
Well rounded opportunities for students is critical - STEM, please!	Pedagogical	
Education and curriculum focus on subject area (STEM, reading) rather than comprehensive education	Pedagogical	
Classroom/teacher ratio, creative/intuitive learning environments, and unintended consequences in neighborhoods, city as by-product	Pedagogical	
Public schools need art educators, mental health counselors, and sufficient time allotted for recess and P.E.	Pedagogical	

# Pedagogical



<b>Category</b>	<b>50</b>
Community	9
Facility	4
Personnel	5
Socio-Economic	5
Financial	7
Pedagogical	20



Community Facility Personnel Socio-Economic Financial Pedagogical

Category	Recommendation
Community	More parental involvement in the schools and trust.
Facility	Efficient, safe and inviting facilities that provide world-class education.
Personnel	Positive rapport between staff/students/leadership and alignment of professional growth to support positive outcomes.
Socio-Economic	Balance the demographics and socio-economic make-up so that all students receive high quality equitable education.
Financial	Focus financial resources on providing a world class education for all students
Pedagogical	Develop high quality instructional framework and delivery systems aligned with buildings and resources to maximize positive student learning.

# FACILITY DATA

School Name	Type	GSF
Beverlye	Middle	121,056
Carver	Middle	81,785
Cloverdale	Elementary	43,114
Dothan	High	192,380
Faine	Elementary	41,736
Girard ES	Elementary	43,166
Girard MS	Middle	66,752
Grandview	Elementary	46,817
Head Start	Pre-Sch	42,900
Heard	Elementary	46,223
Hidden Lake	Elementary	62,250
Highlands	Elementary	62,250
Honeysuckle	Middle	121,056
Kelly Springs	Elementary	73,334
Slingluff	Elementary	52,100
Montana Street	Elementary	45,194
Northview	High	209,164
Dothan Tech	Vocational	56,517
Pass Academy	1st - 12th	41,877
Selma Street	Elementary	46,197
Total	20	1,495,868

# FACILITY ENVELOPES

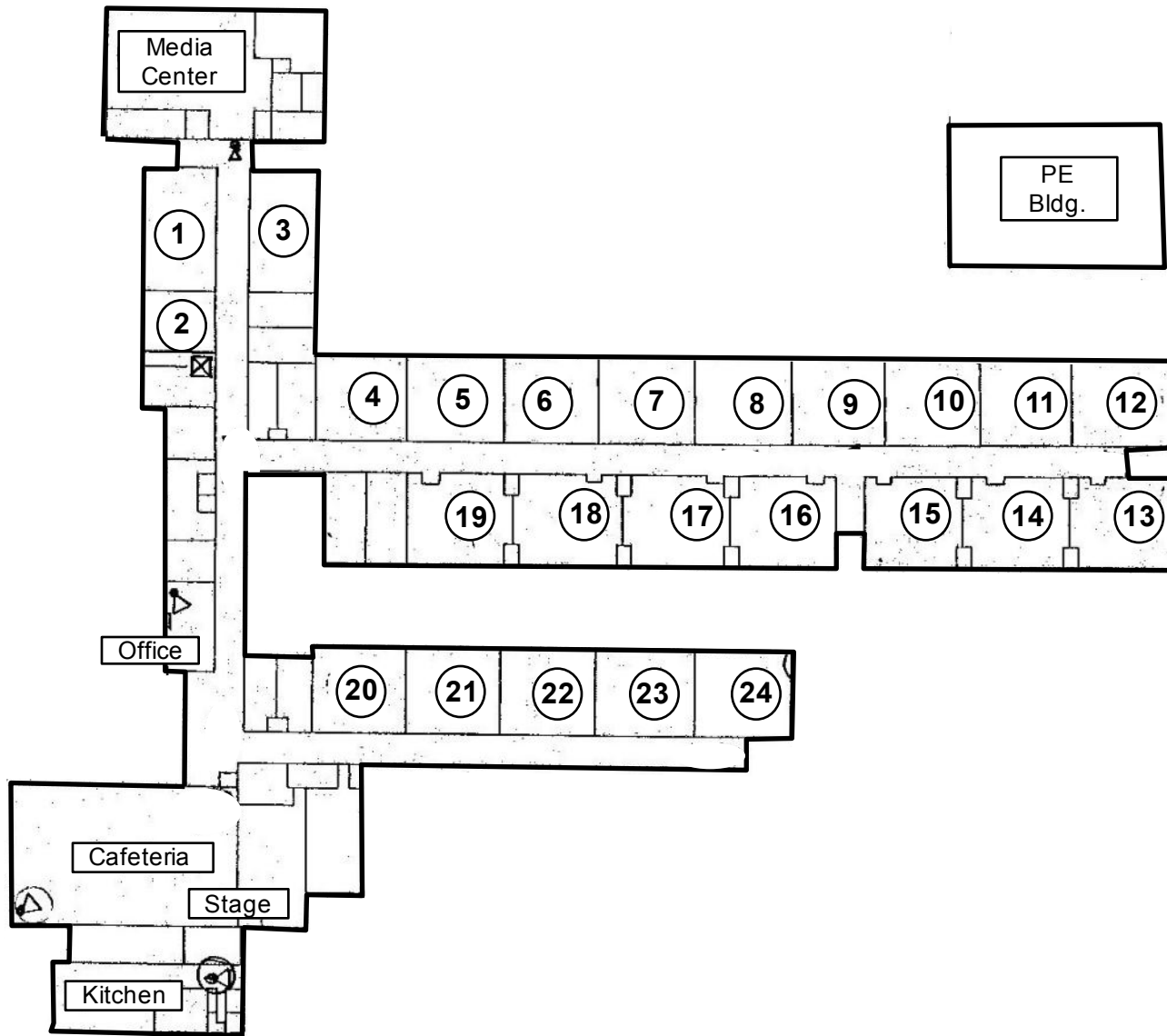
School	Exterior Wall	Roof	Window Glazing
Beverlye Middle	Brick	Built-up, Flat	Single Clear
Carver Middle	Brick	Built-up, Flat	Double Clear
Cloverdale Elementary	Brick	Built-up, Flat & Slope Metal Seam	Double Clear
Dothan High	Stucco	Built-up, Flat & Slope Metal Seam	Double Tinted
Faine Elementary	Brick	Built-up, Flat	Double Clear
Girard Elementary	Brick	Slope Metal Seam	Double Clear
Girard Middle	Brick, Stucco & Metal Panels	Built-up, Flat	Double Tinted
Grandview Elementary	Brick	Built-up, Flat	Double Clear
Head Start Pre-Sch	Stucco	Slope Metal Seam	Double Clear
Heard Elementary	Brick	Built-up, Flat	Double Clear
Hidden Lake Elementary	Brick	Slope Metal Seam	Double Clear
Highlands Elementary	Brick	Slope Metal Seam	Double Clear
Honeysuckle Middle	Brick	Built-up, Flat	Single Clear
Kelly Springs Elementary	Brick	Built-up, Flat	Double Tinted
Slingluff Elementary	Brick	Slope Metal Seam	Double Clear
Montana Street Elementary	Brick & Stucco	Slope Metal Seam	Double Clear
Northview High	Brick	Built-up, Flat	Double Tinted & Single Tinted
Dothan Tech	Brick	Built-up, Flat	Single Tinted
Selma Street Elementary	Brick	Built-up, Flat	Double Clear
Pass Academy	(did not survey)	(did not survey)	(did not survey)

## SUMMARY

# FACILITY HVAC SYSTEMS

Building	Cooling		Heating				Air Sys (CHW)		Air Sys (DX)		DHW		Controls	
	AC Chlr	DX	Gas Blr	Gas	Elec	HP	AHU	UV <sup>(3)</sup>	AHU	UV <sup>(3)</sup>	Gas	Elec	DDC	Timeclk
Beverlye Middle		x			x				x			x	x	
Carver Middle	x	x			x	x	x	x			x			(2)
Cloverdale Elementary	x	x			x	x		x	x		x			x
Dothan High High		x			x	x			x	x	x	x		(2)
Faine Elementary	x	x		x	x	x		x	x		x			(2)
Girard Elementary	x	x		x	x			x			x			(2)
Girard Middle	x	x	x		x	x	x	x	x			x	x	
Grandview Elementary	x	x			x	x		x						(2)
Head Start Pre-Sch	x	x		x	x	x	x		x			x		(2)
Heard Elementary		x			(1)	x				x		x		(2)
Hidden Lake Elementary	x				x		x					x	x	
Highlands Elementary	x				x		x					x	x	
Honeysuckle Middle		x			x				x			x	x	
Kelly Springs Elementary	x	x			x	x		x	x			x		(2)
Slingluff Elementary	x				x		x					x	x	
Montana Street Elementary	x	x			x	x		x	x		x			(2)
Northview High	x	x			x	x	x					x		x
Dothan Tech	x	x			x		x		x			x		
Pass Academy	x	x		x	x			x			x			x
Selma Street Elementary	x	x			x	x		x	x		x			(2)

## SUMMARY

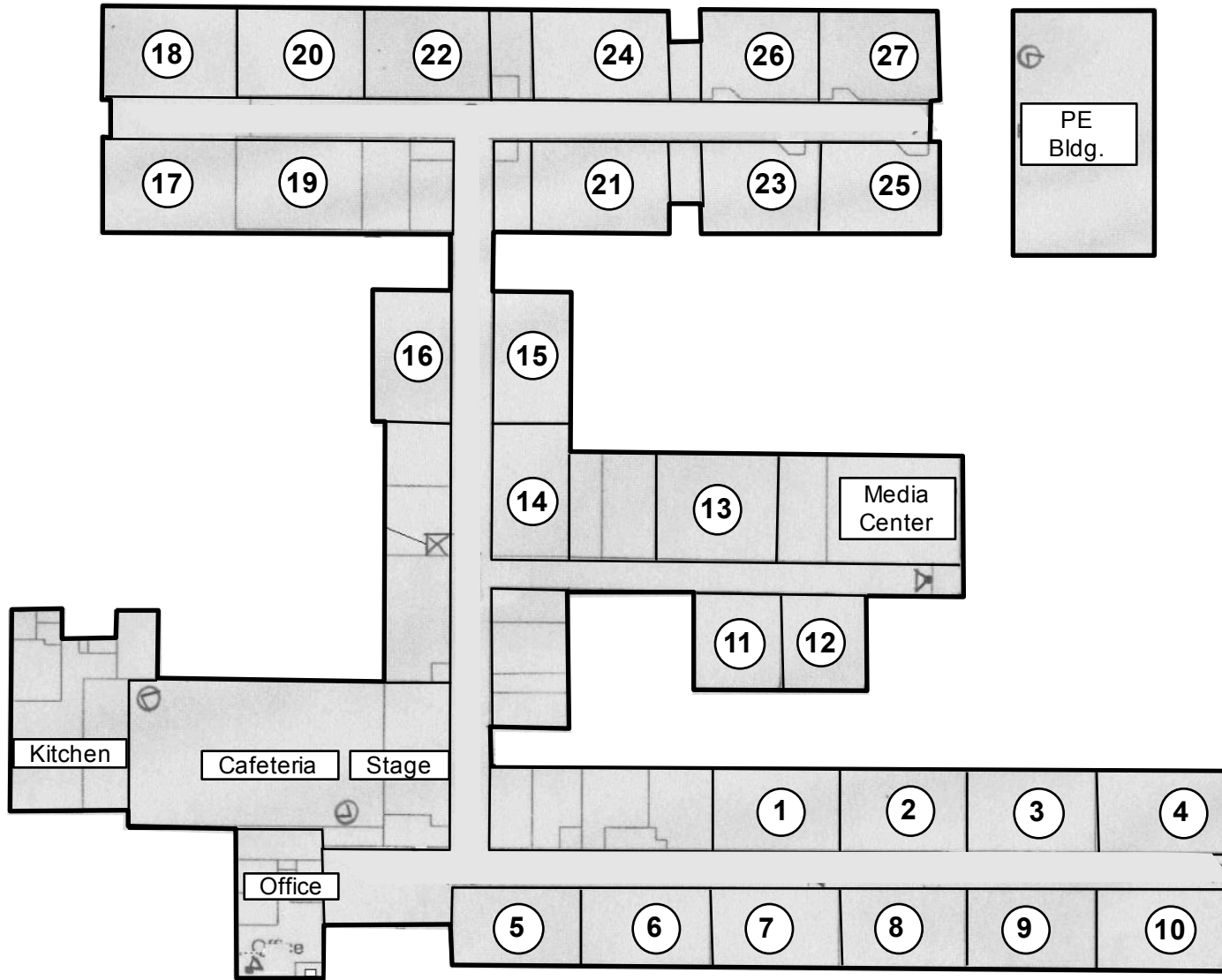


**24 - Classrooms**  
**01 - PE**  
**01 - Media Center**  


---

**26 - INSTRUCTIONAL UNITS**



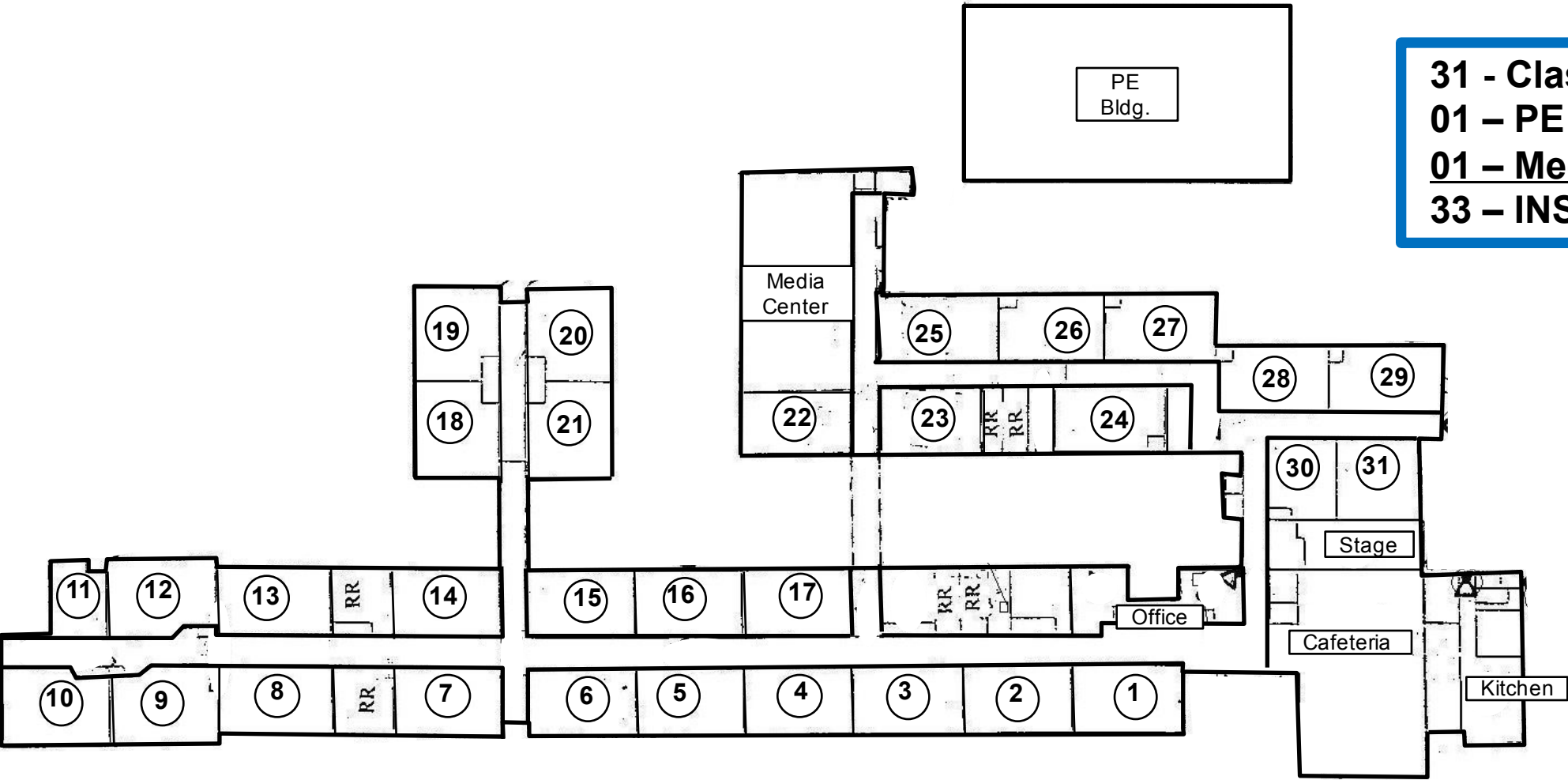


- 27 - Classrooms**
- 01 - PE**
- 01 - Media Center**

---

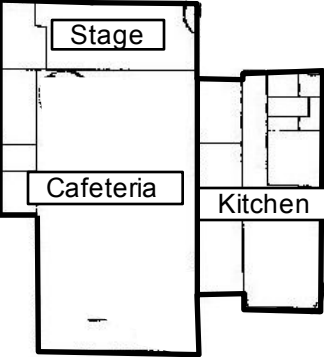
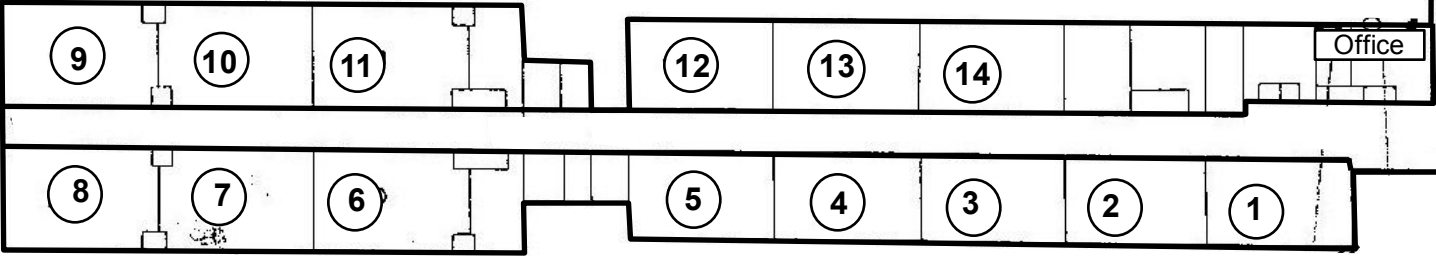
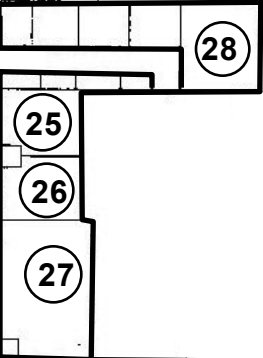
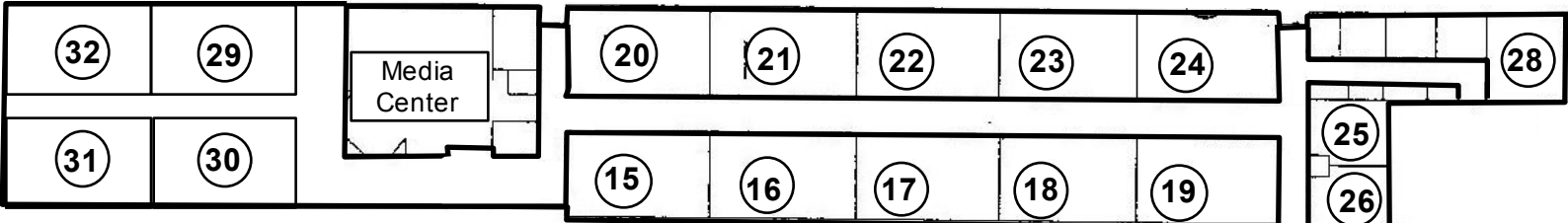
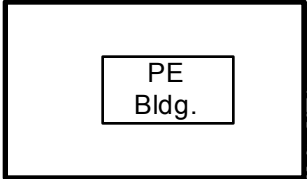
- 29 - INSTRUCTIONAL UNITS**

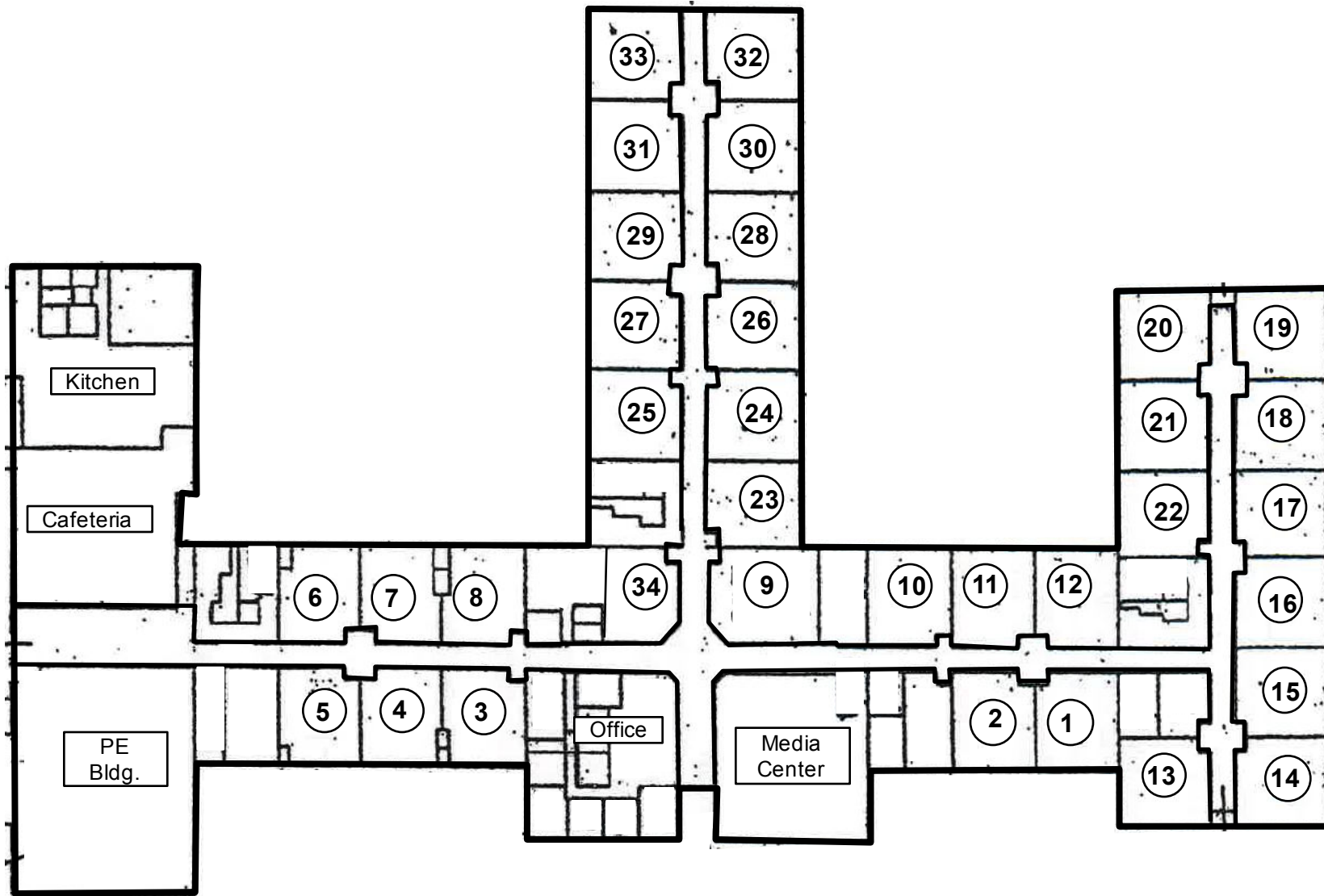
**31 - Classrooms**  
**01 - PE**  
**01 - Media Center**  
**33 - INSTRUCTIONAL UNITS**



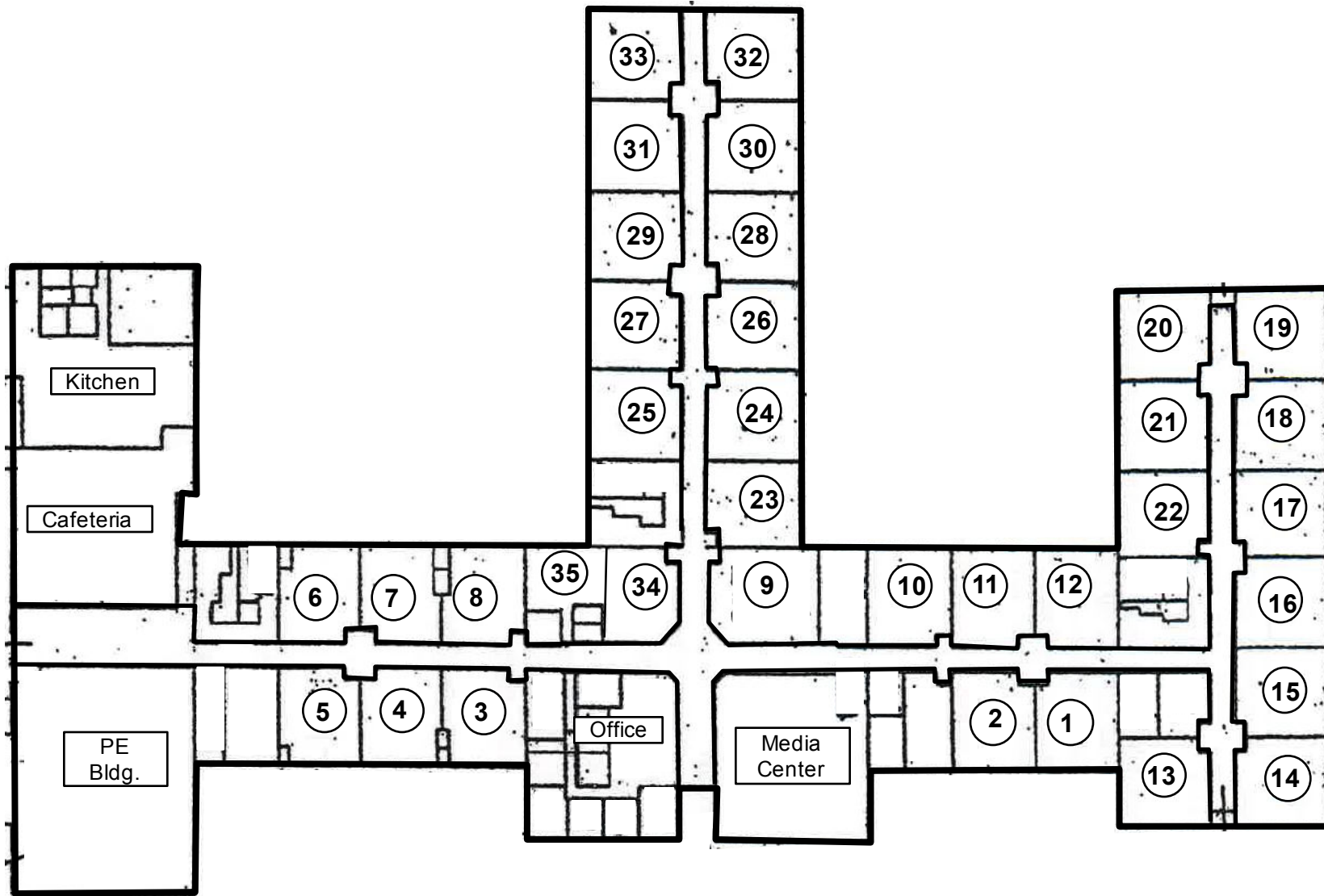


**32 - Classrooms**  
**01 - PE**  
**01 - Media Center**  
**34 - INSTRUCTIONAL UNITS**

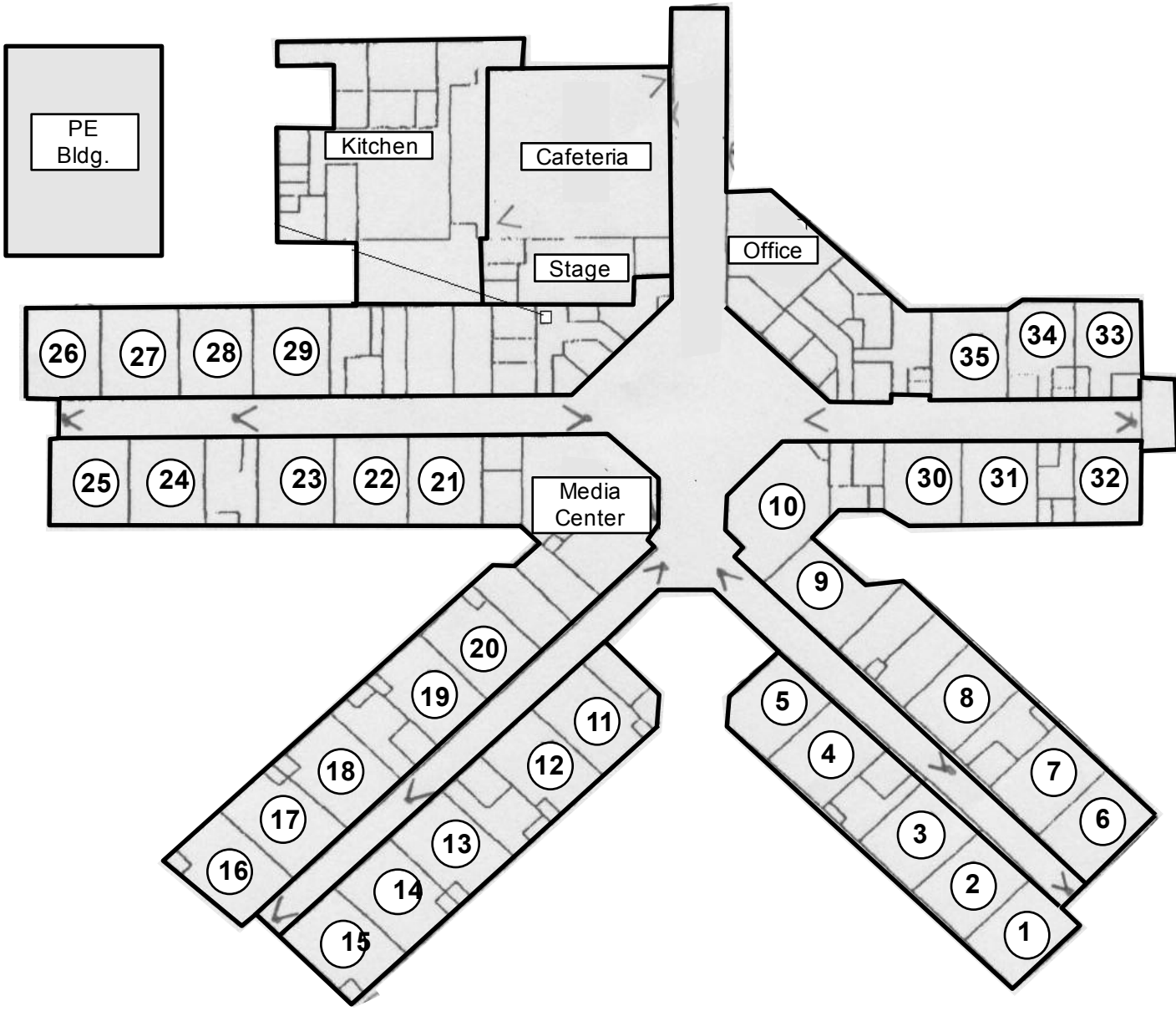




**34 - Classrooms**  
**01 - PE**  
**01 - Media Center**  
**36 - INSTRUCTIONAL UNITS**



**35 - Classrooms**  
**01 - PE**  
**01 - Media Center**  
**37 - INSTRUCTIONAL UNITS**



- 35 - Classrooms**
- 01 - PE**
- 01 - Media Center**

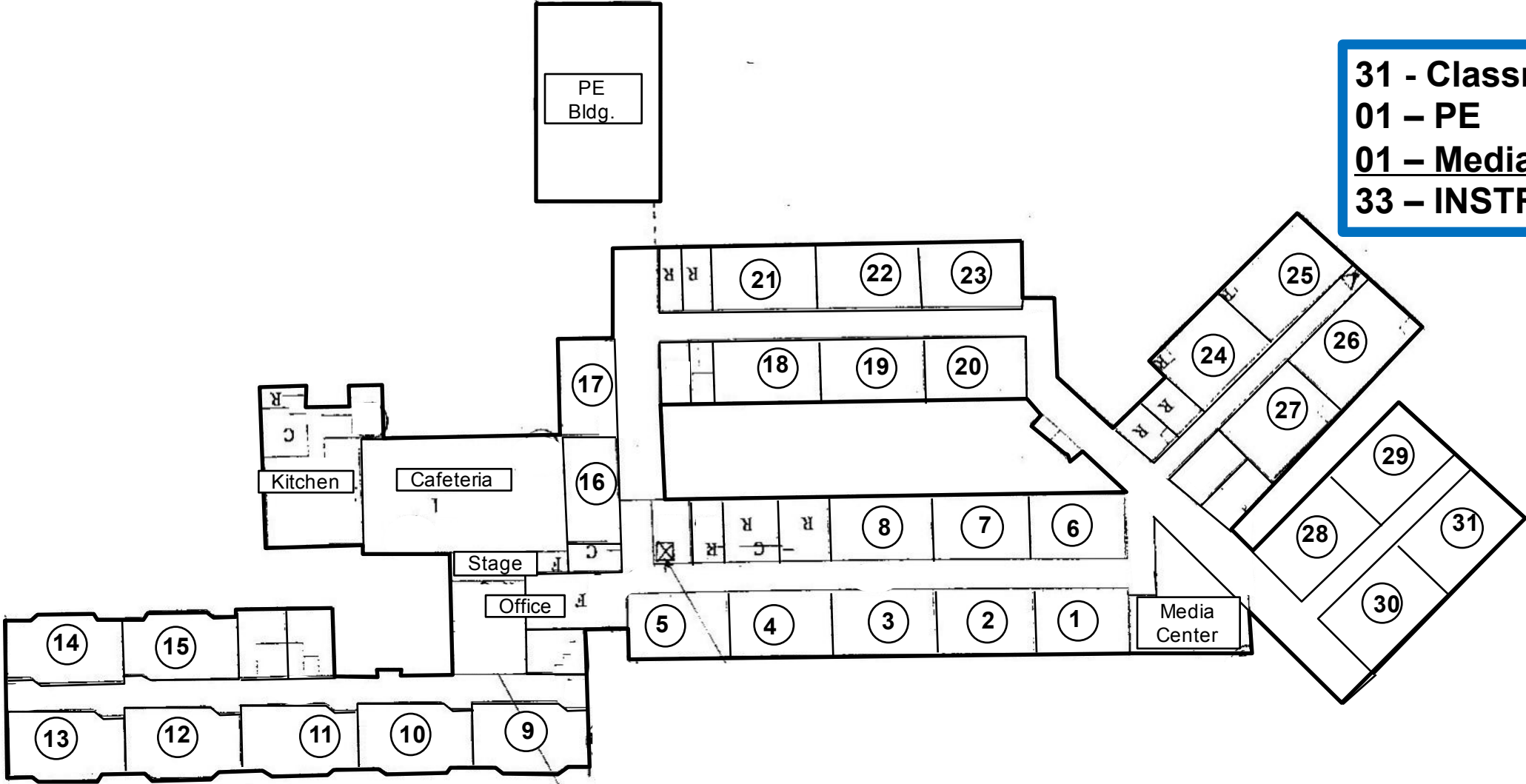
---

- 37 - INSTRUCTIONAL UNITS**

- 31 - Classrooms**
- 01 - PE**
- 01 - Media Center**

---

- 33 - INSTRUCTIONAL UNITS**

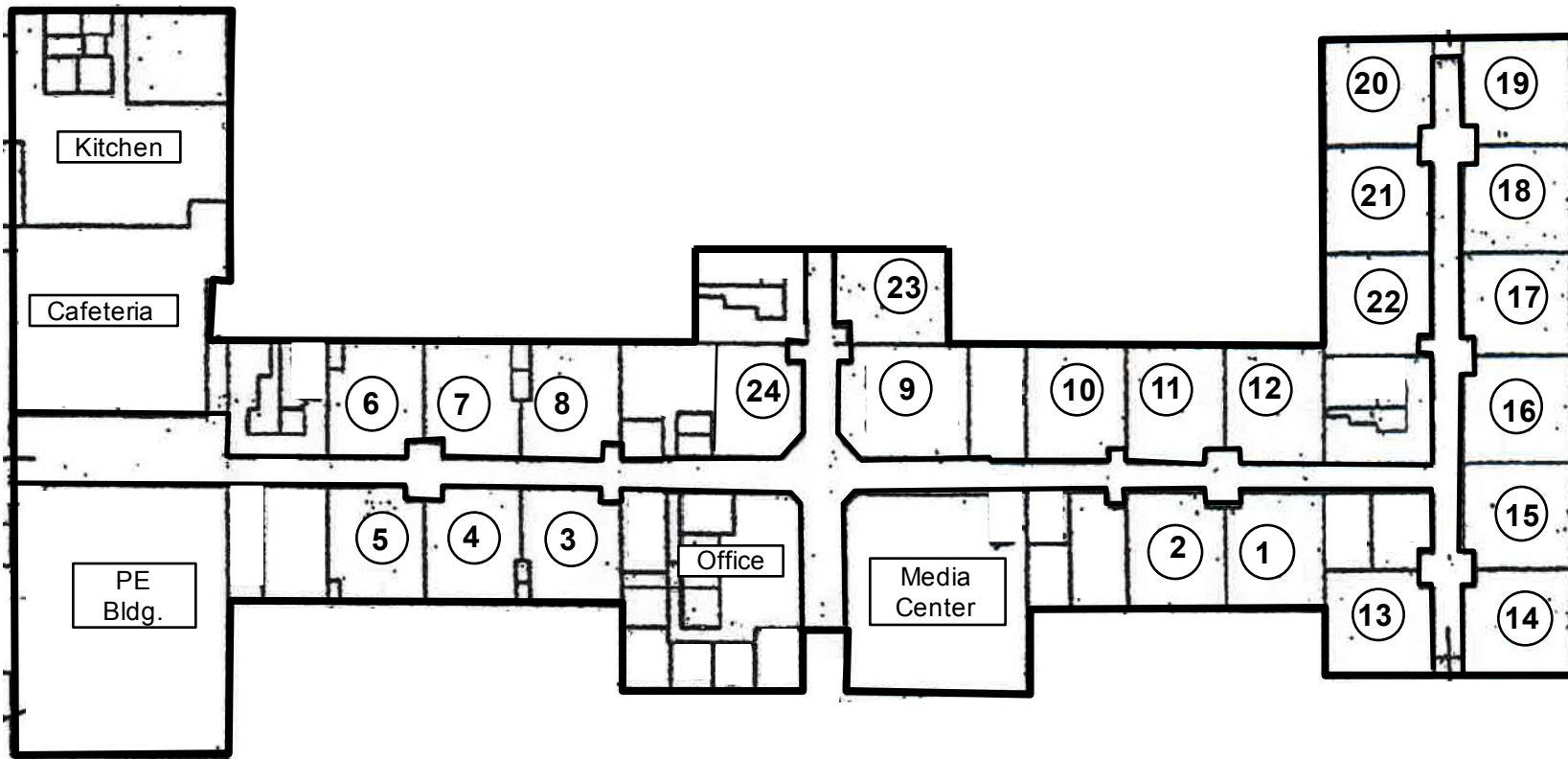


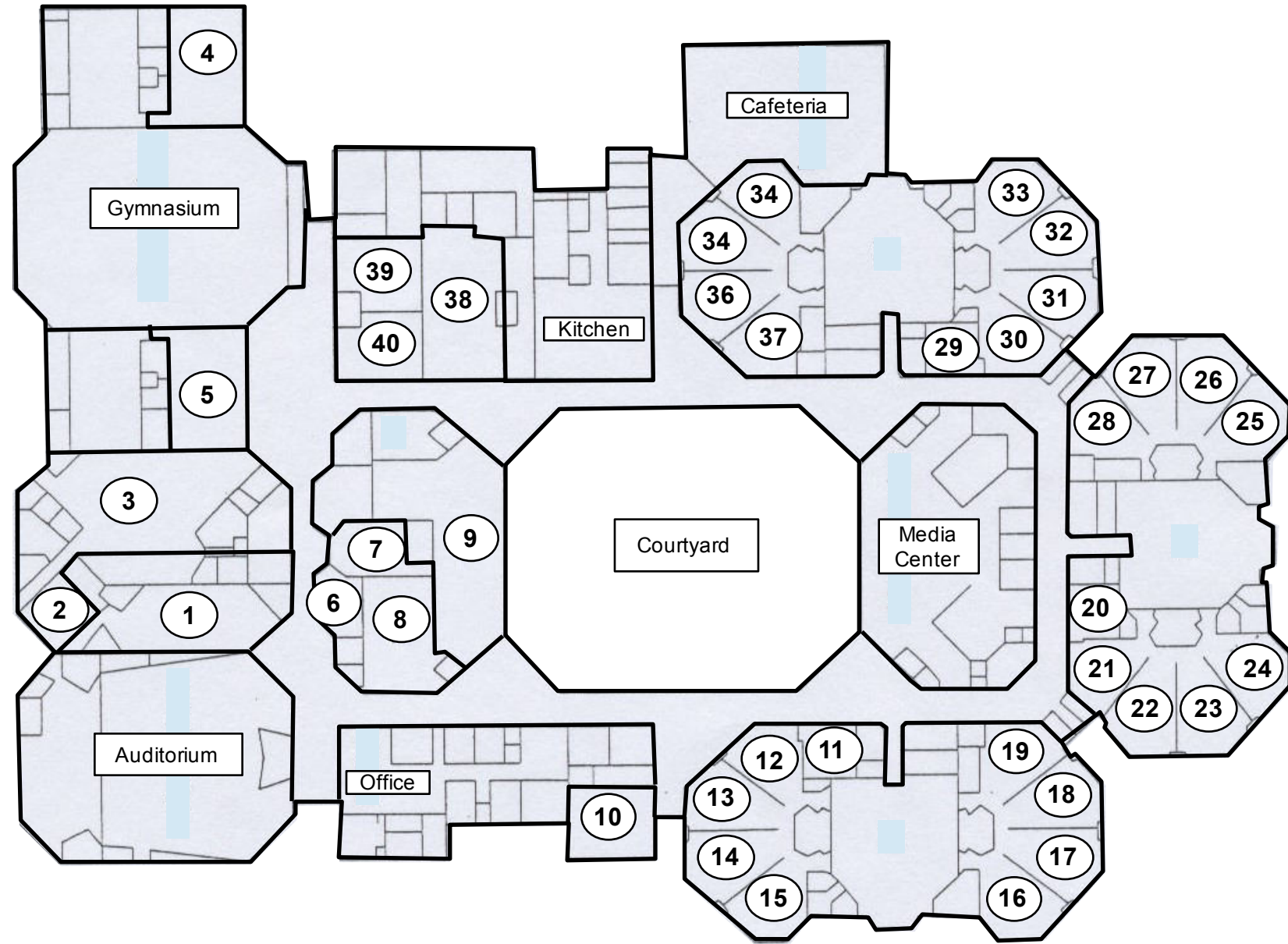


**24 - Classrooms**  
**01 - PE**  
**01 - Media Center**

---

**26 - INSTRUCTIONAL UNITS**



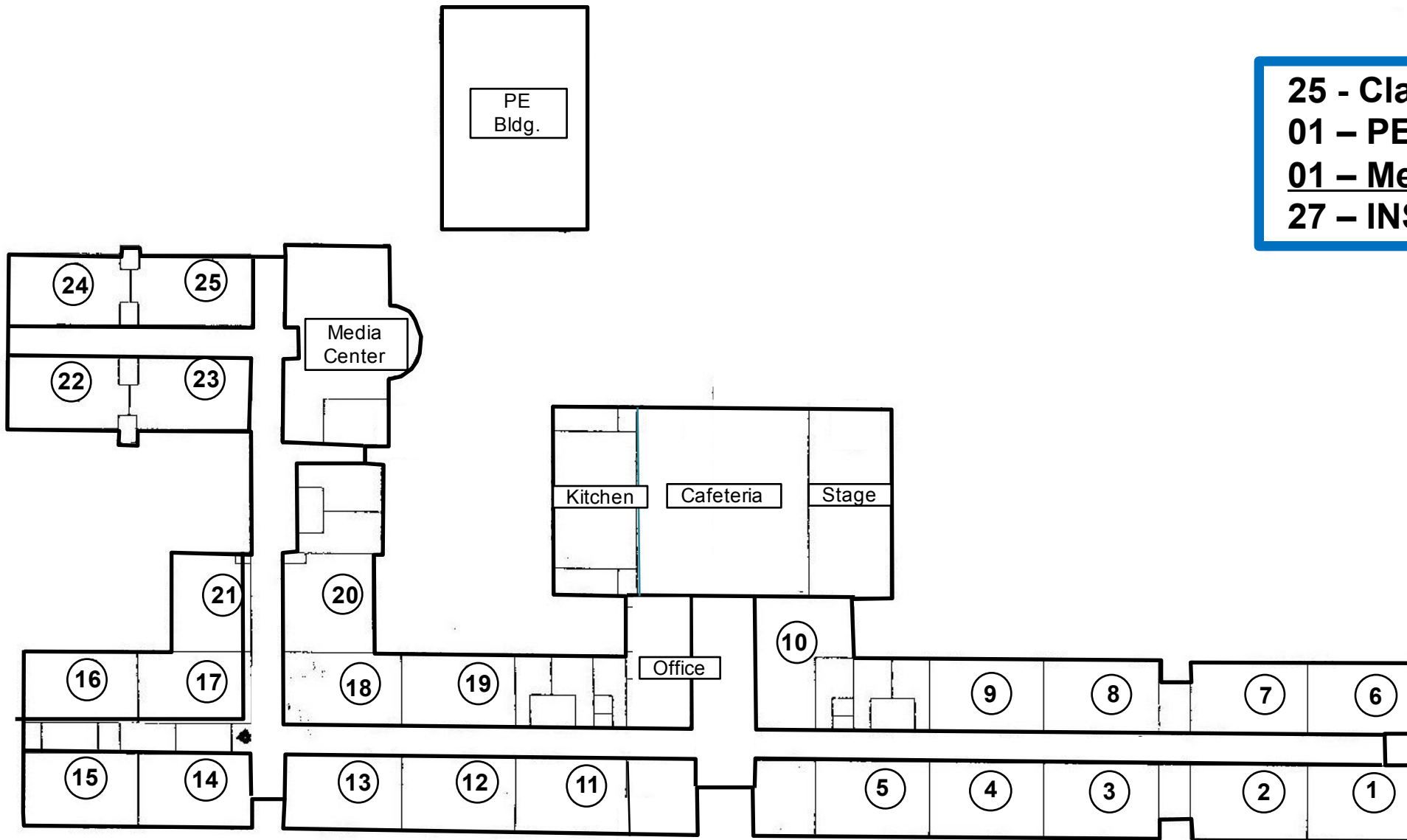


**40 - Classrooms**  
**01 - PE**  
**01 - Media Center**  

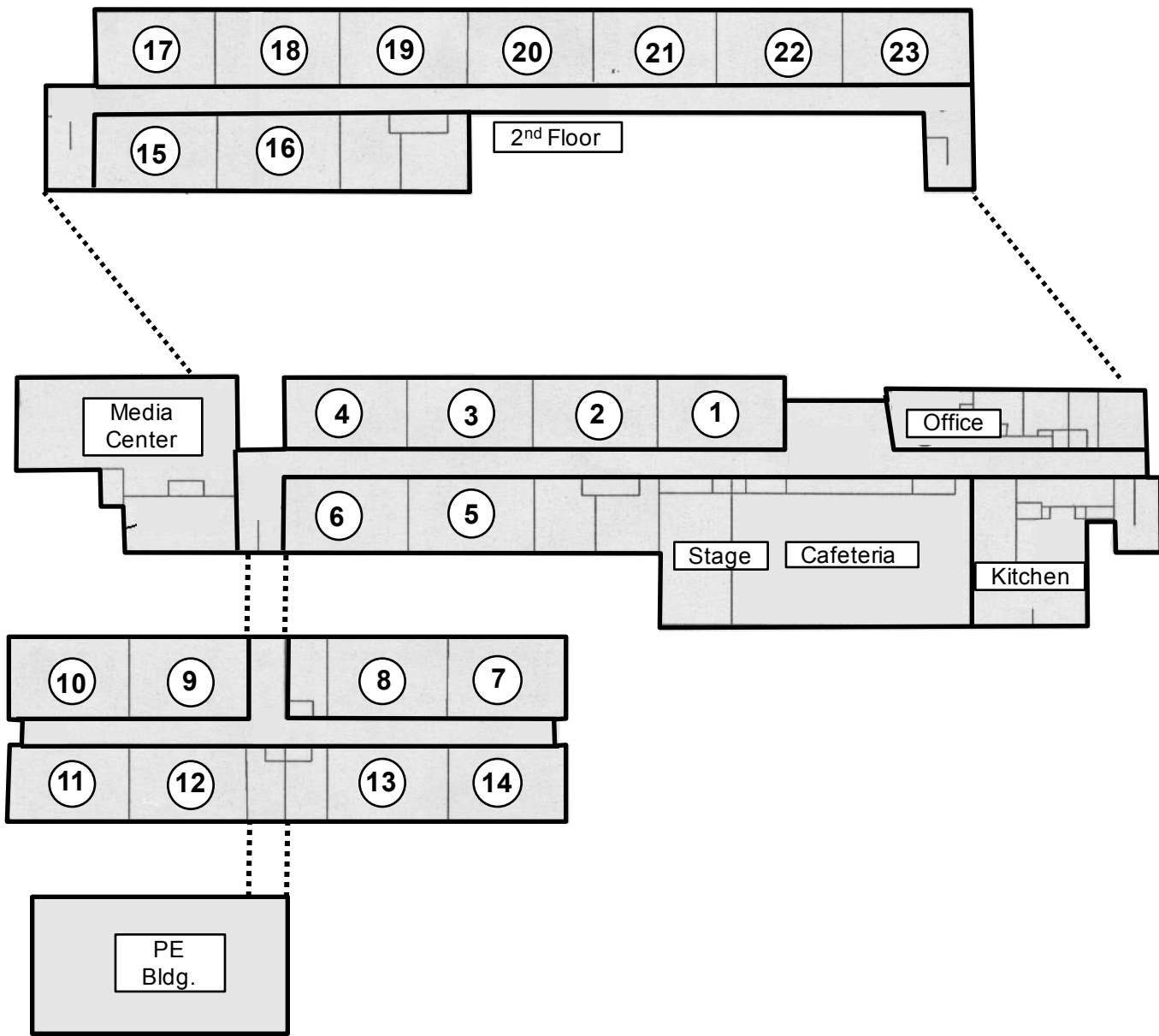

---

**42 - INSTRUCTIONAL UNITS**





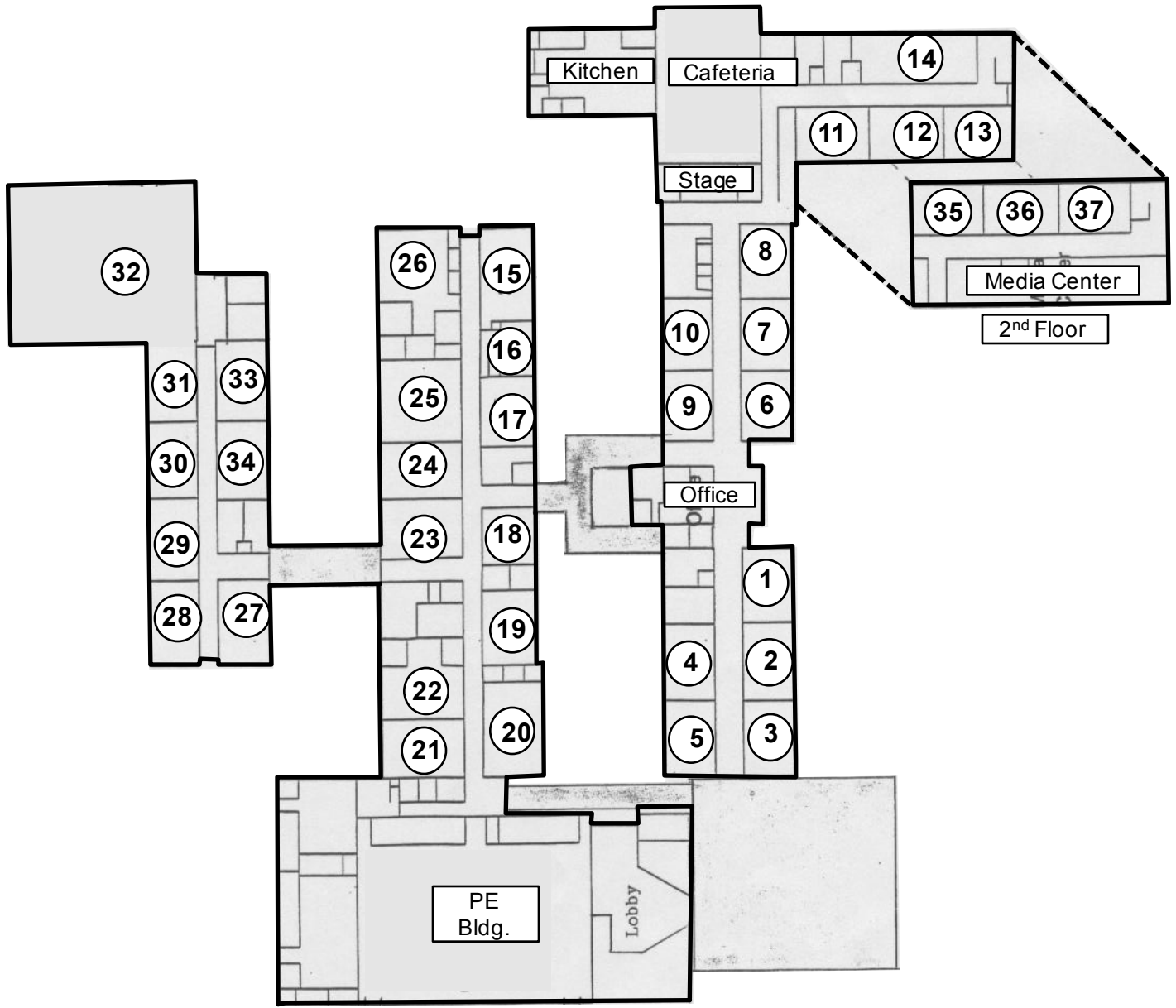
**25 - Classrooms**  
**01 - PE**  
**01 - Media Center**  
**27 - INSTRUCTIONAL UNITS**



- 23 - Classrooms**
- 01 - PE**
- 01 - Media Center**

---

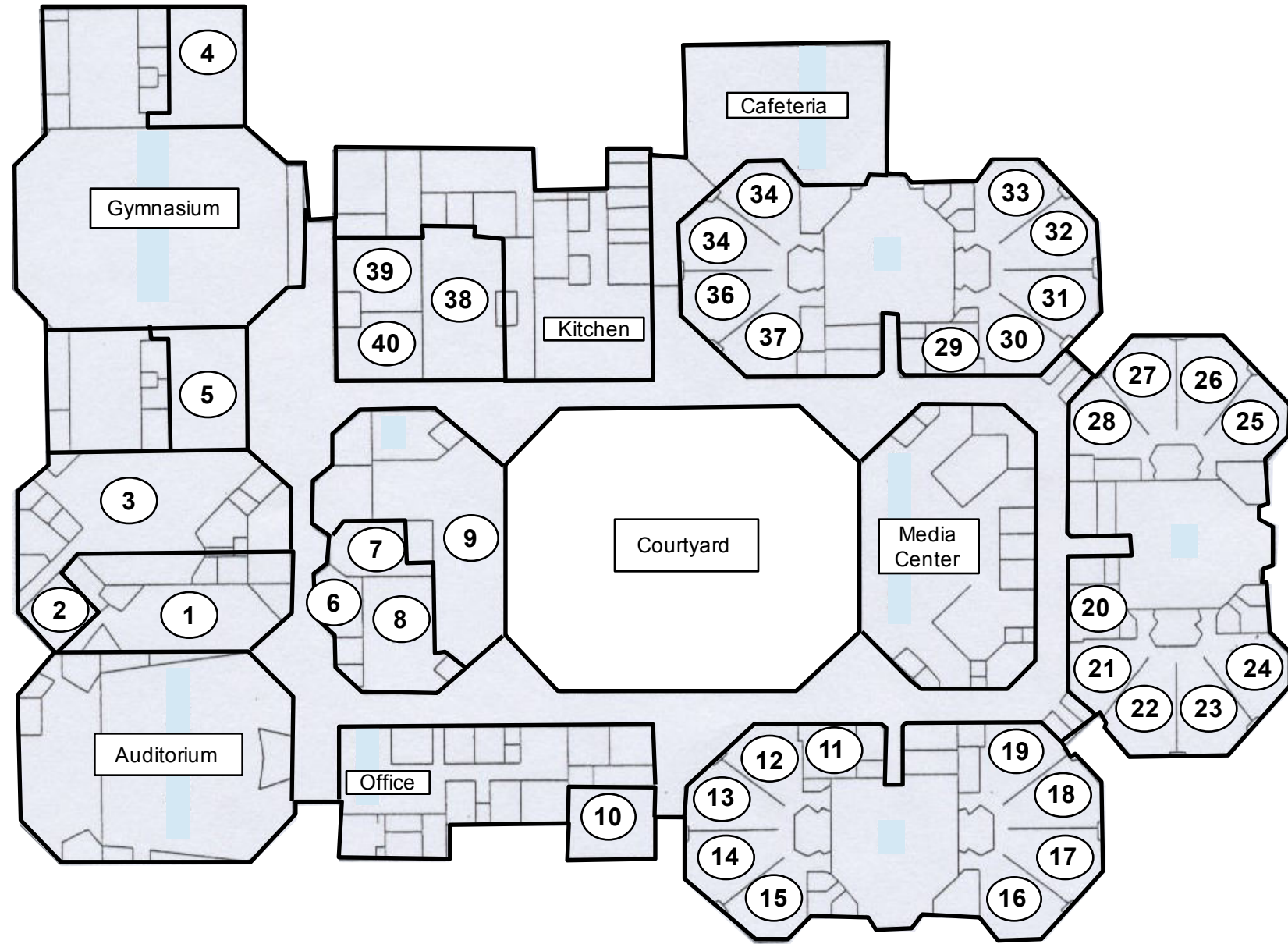
- 25 - INSTRUCTIONAL UNITS**



- 37 - Classrooms**
- 01 - PE**
- 01 - Media Center**

---

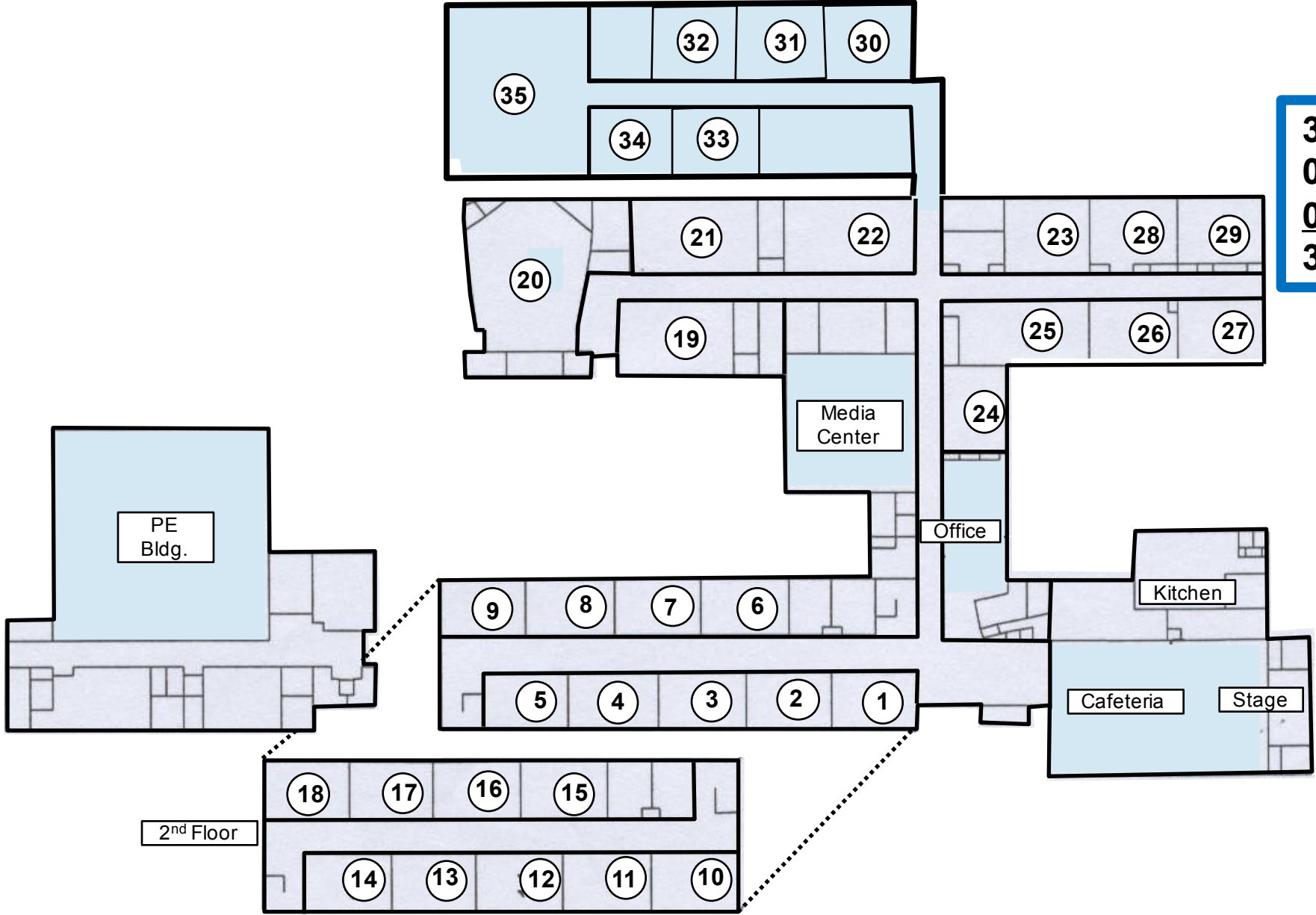
- 39 - INSTRUCTIONAL UNITS**



**40 - Classrooms**  
**01 - PE**  
**01 - Media Center**  


---

**42 - INSTRUCTIONAL UNITS**



- 35 - Classrooms**
- 01 - PE**
- 01 - Media Center**

---

- 37 - INSTRUCTIONAL UNITS**