



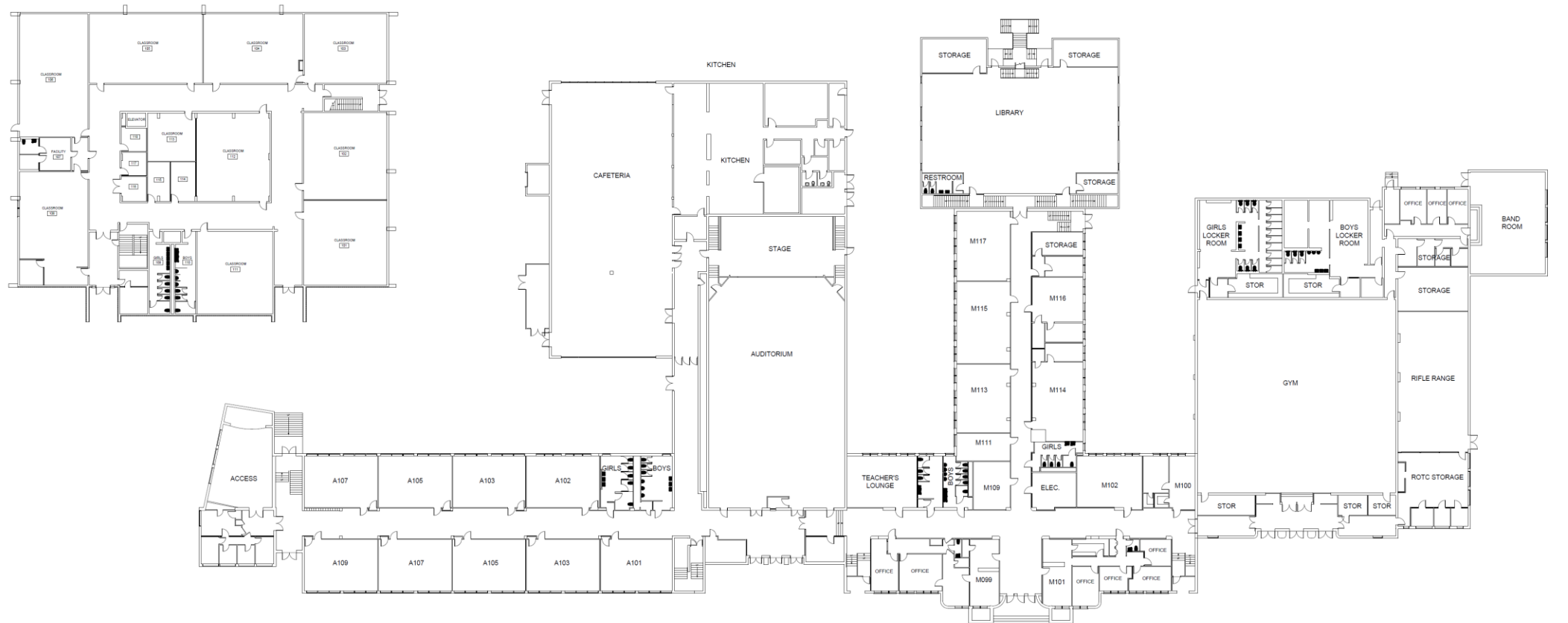
SYSTEM-WIDE MASTER PLANNING
Capital Improvement Plan
March 15, 2019

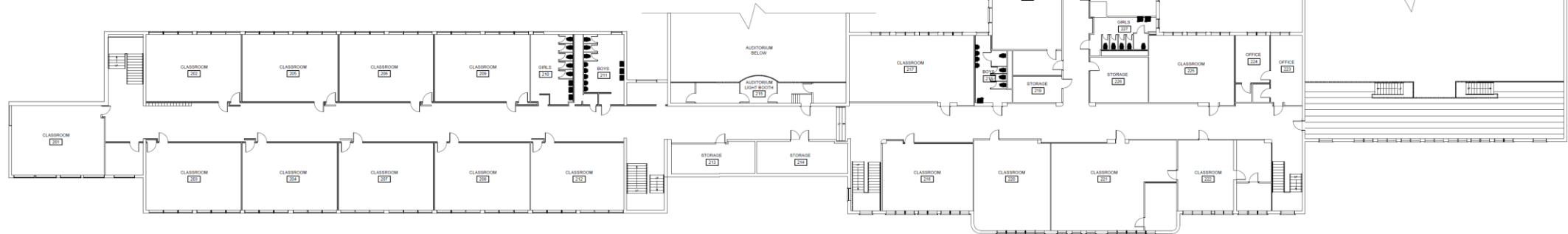
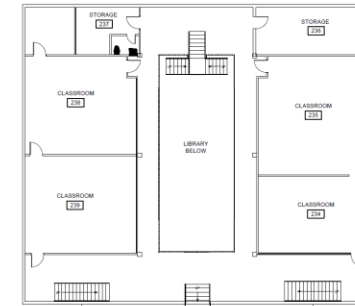
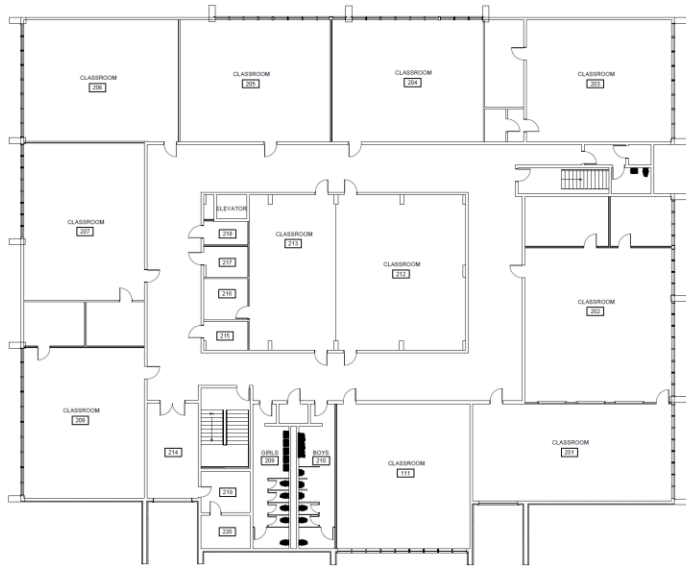


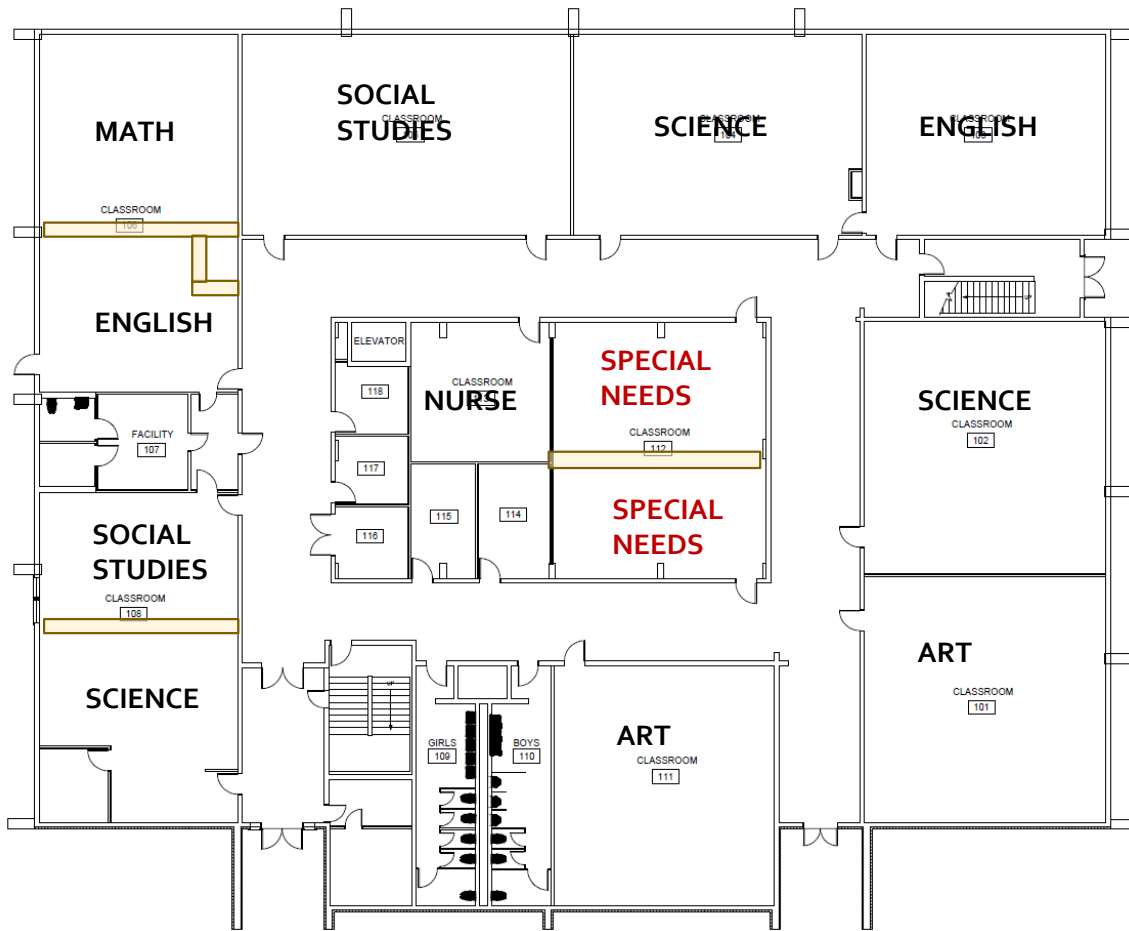
Construction Package's

Dothan City Schools System Wide Improvements		
Task Order 1 - Dothan Preparatory Academy		
School	Project	
Dothan Prep Academy	Basement - 4 new classrooms under 7th grade wing	
Dothan Prep Academy	1st Floor - ROTC Reconfiguration - 3 new classrooms	
Dothan Prep Academy	2nd Floor - 9th Grade Reconfiguration	
Dothan Prep Academy	1st Floor - 9th grade Reconfiguration	
Dothan Prep Academy	2nd Floor - Media Center Reconfiguration	
Dothan Prep Academy	1st Floor - 7th Grade 3 classroom reconfiguration	
Dothan Prep Academy	1st Floor - 7th Grade Career Tech/Social Studies Reconfiguration	
Dothan Prep Academy	Media Center - Weatherization	

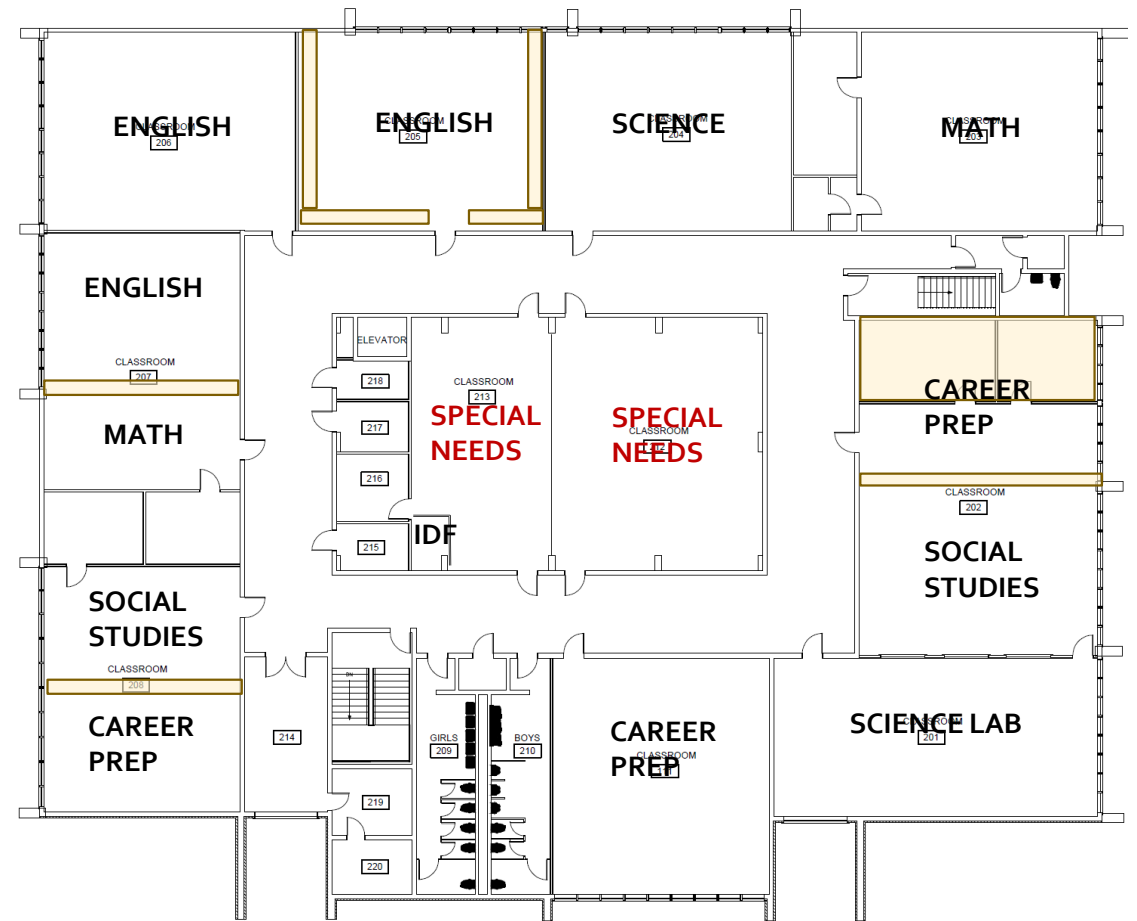
7-9 Enrollment Capacity
1,978
- 1,802 Enrollment 2019-2020





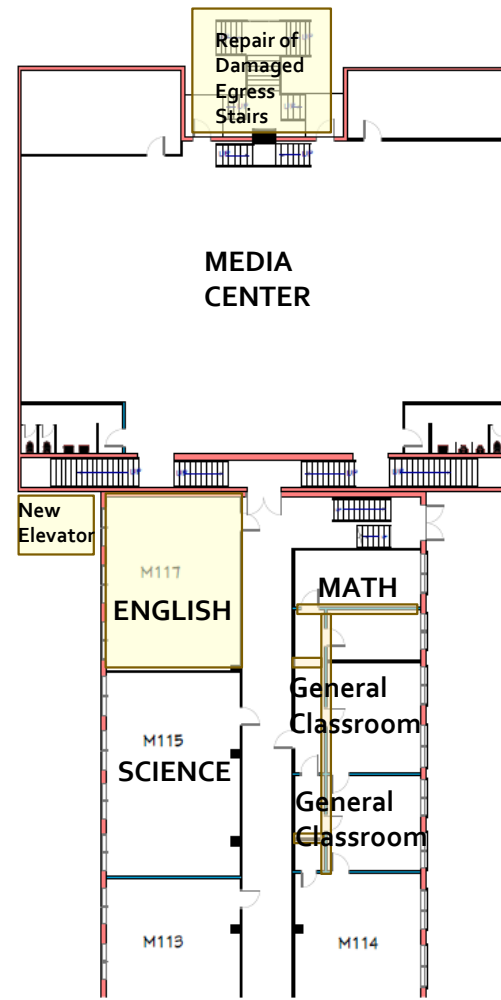
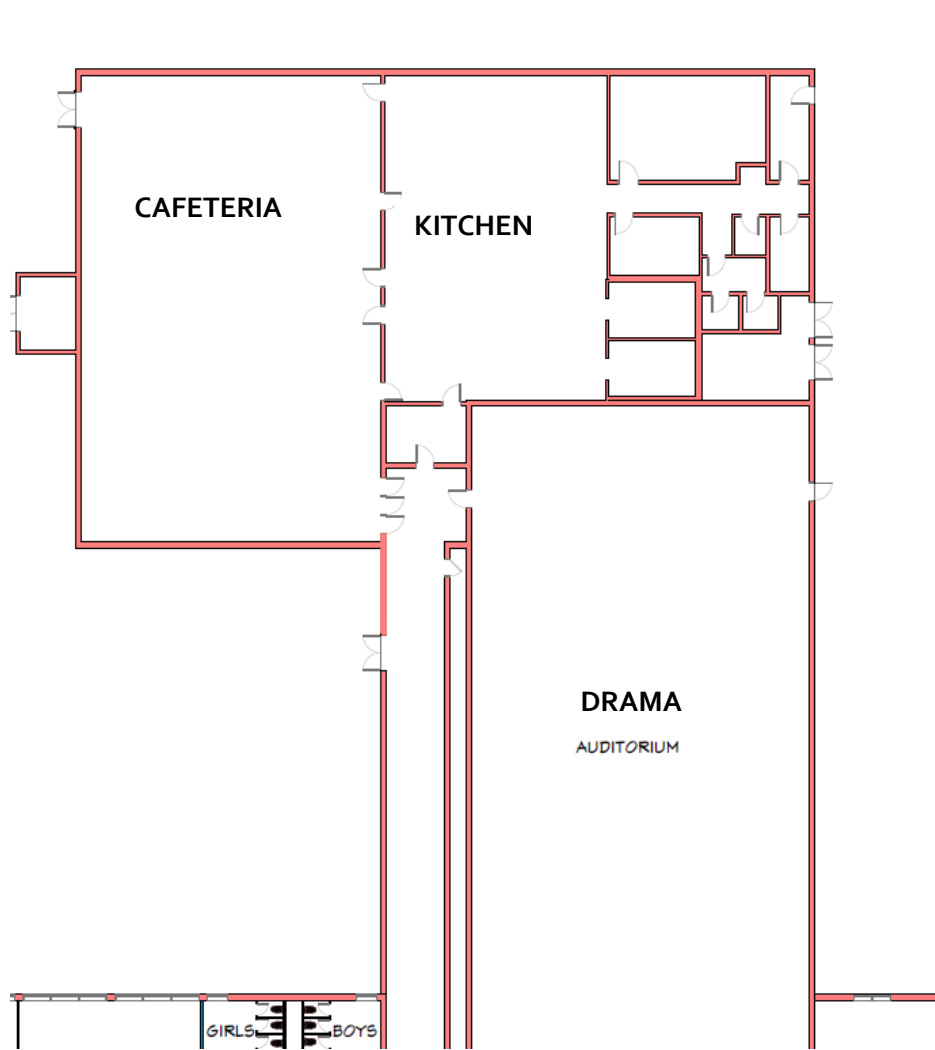


1ST FLOOR

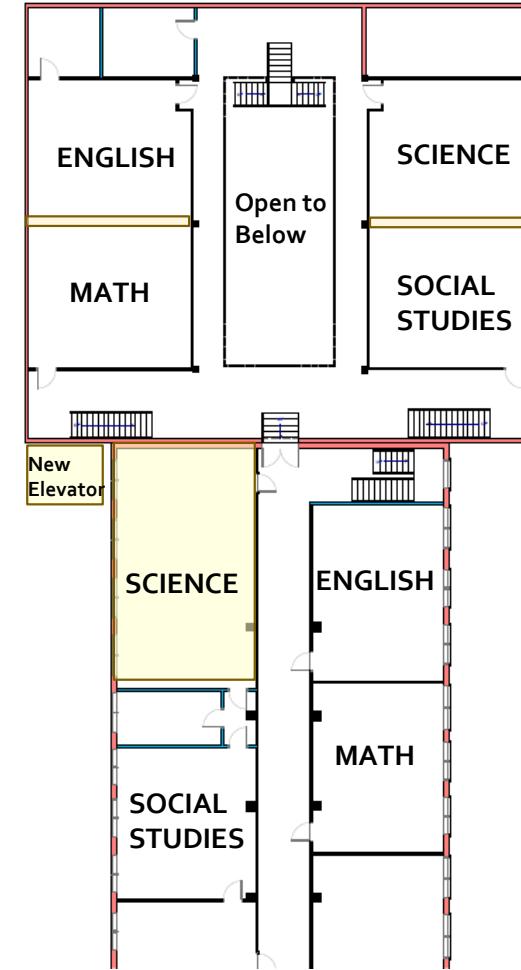


2ND FLOOR



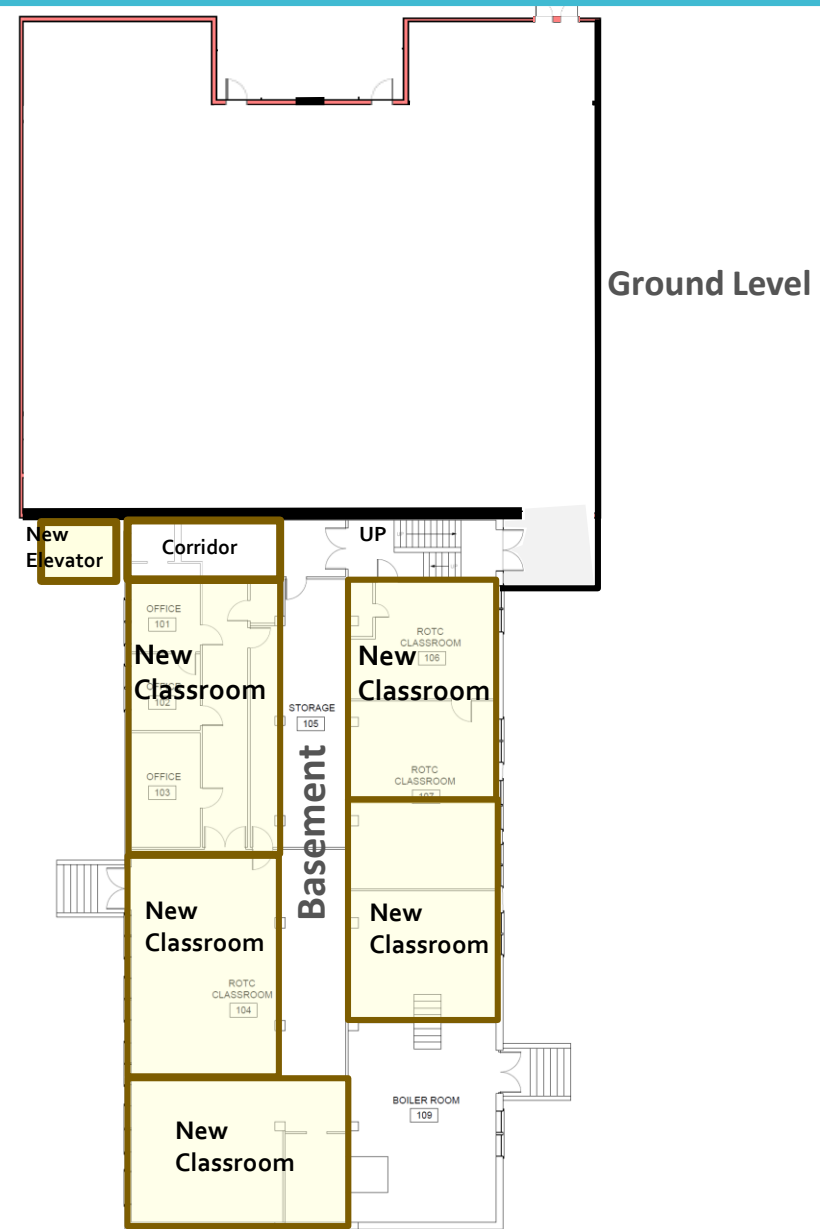
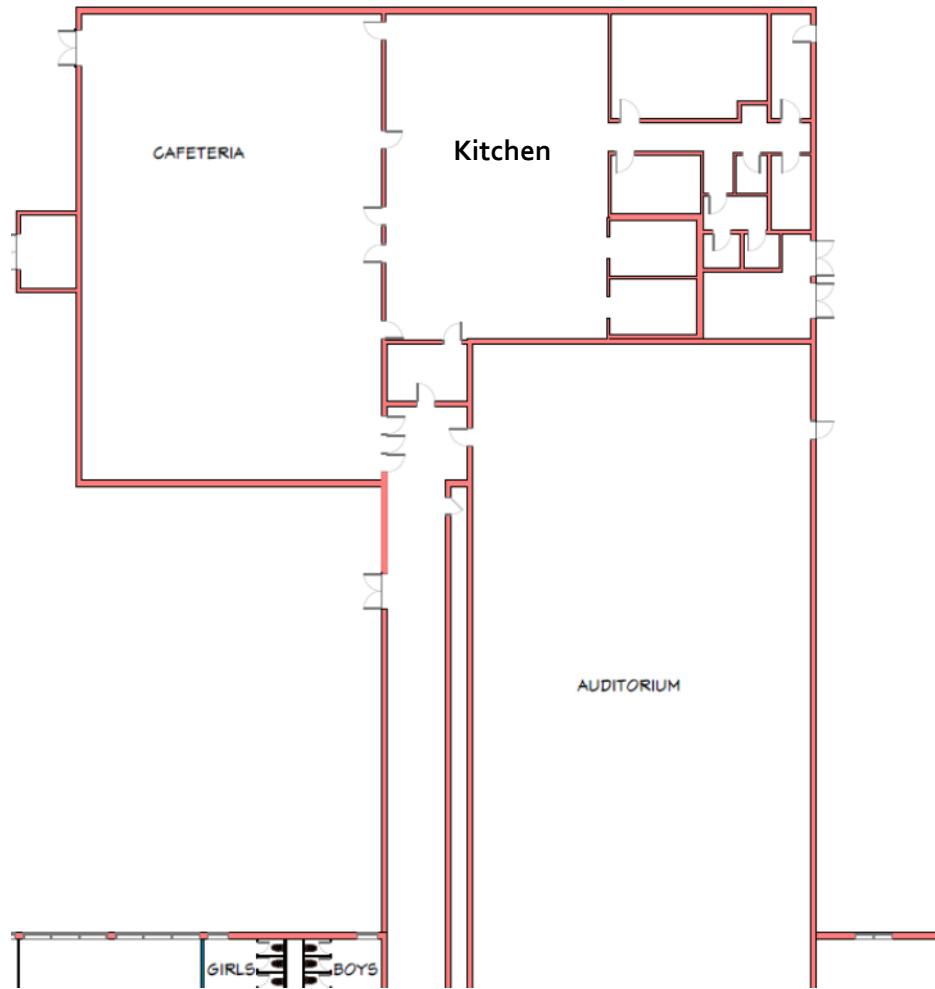


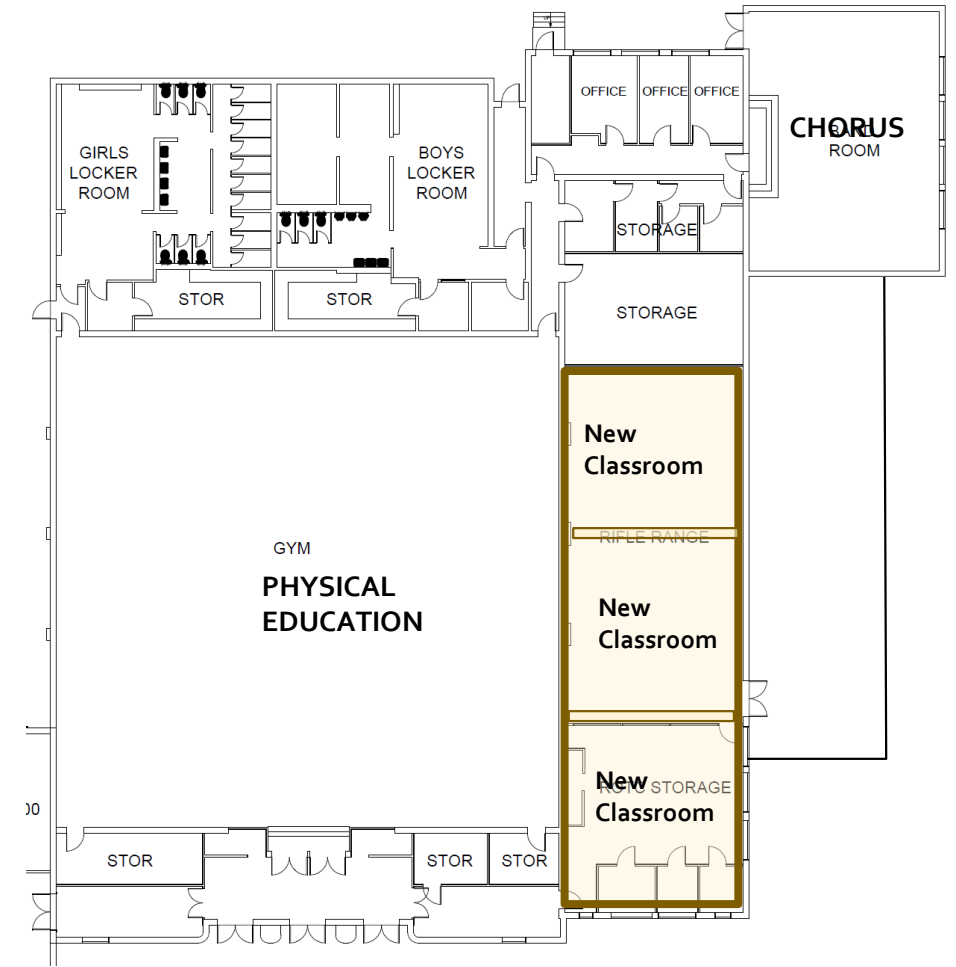
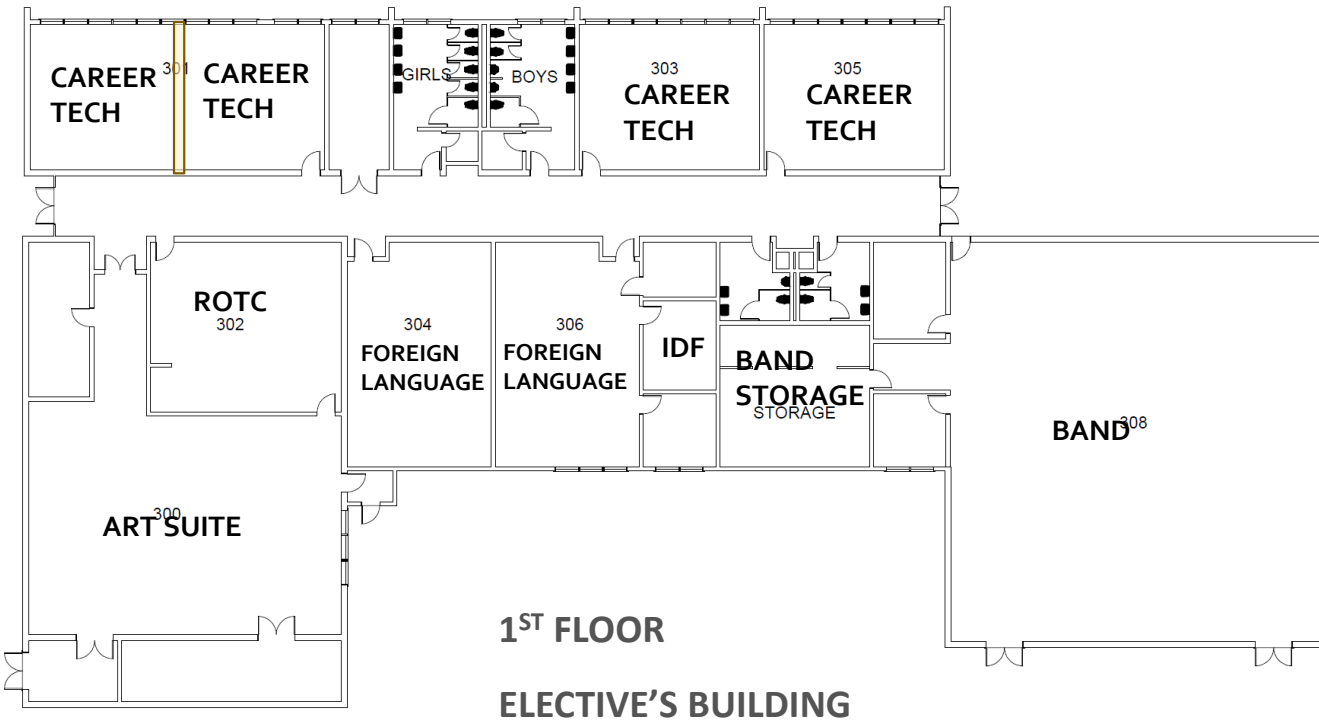
1ST FLOOR
7TH GRADE

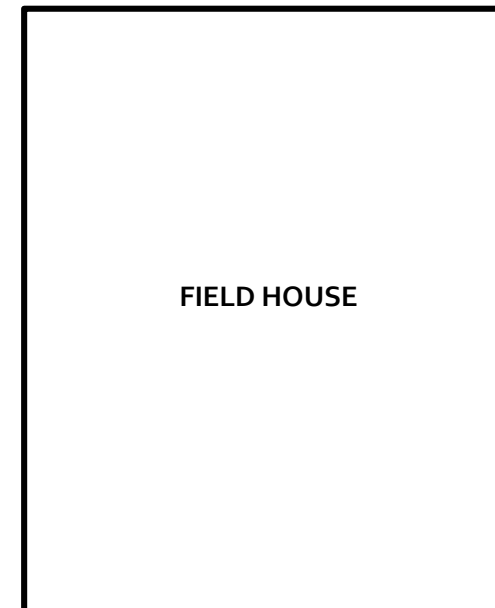
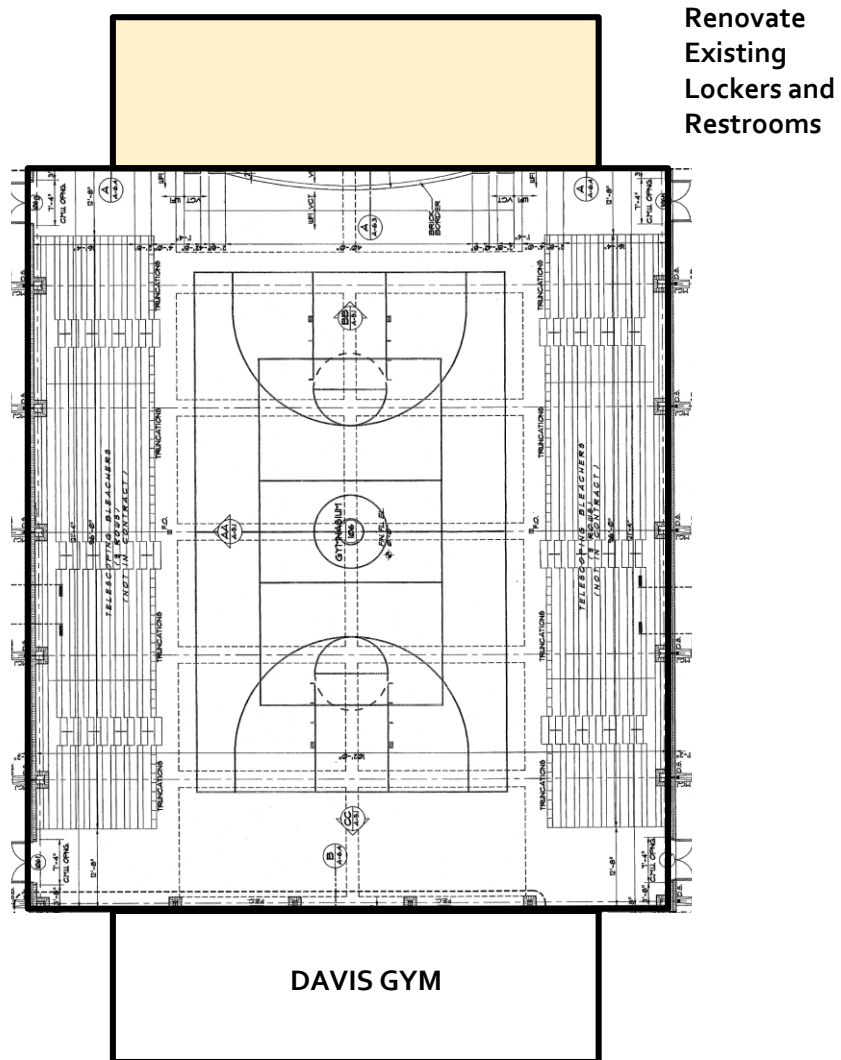


2ND FLOOR
8TH GRADE







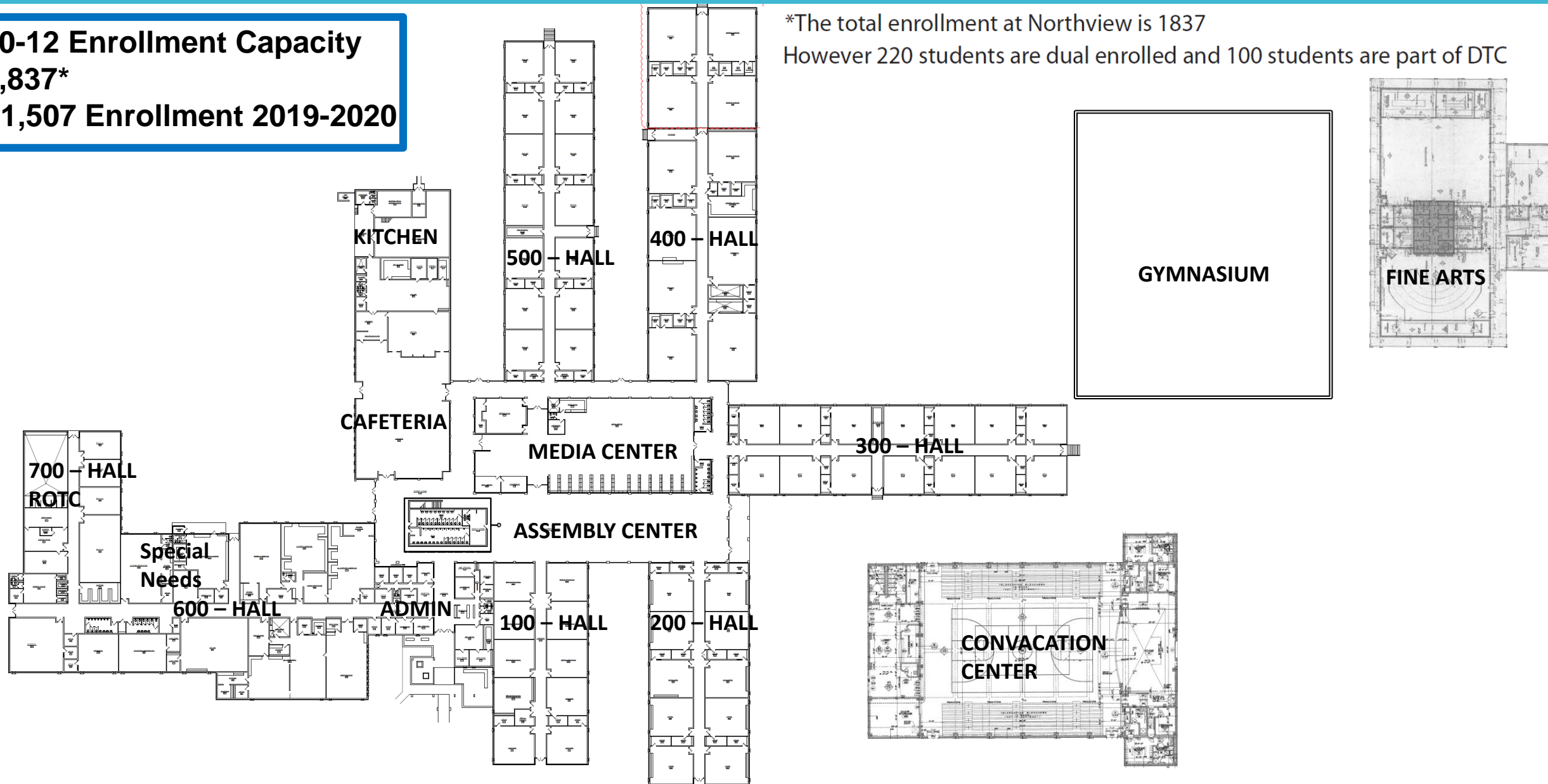


Construction Package's

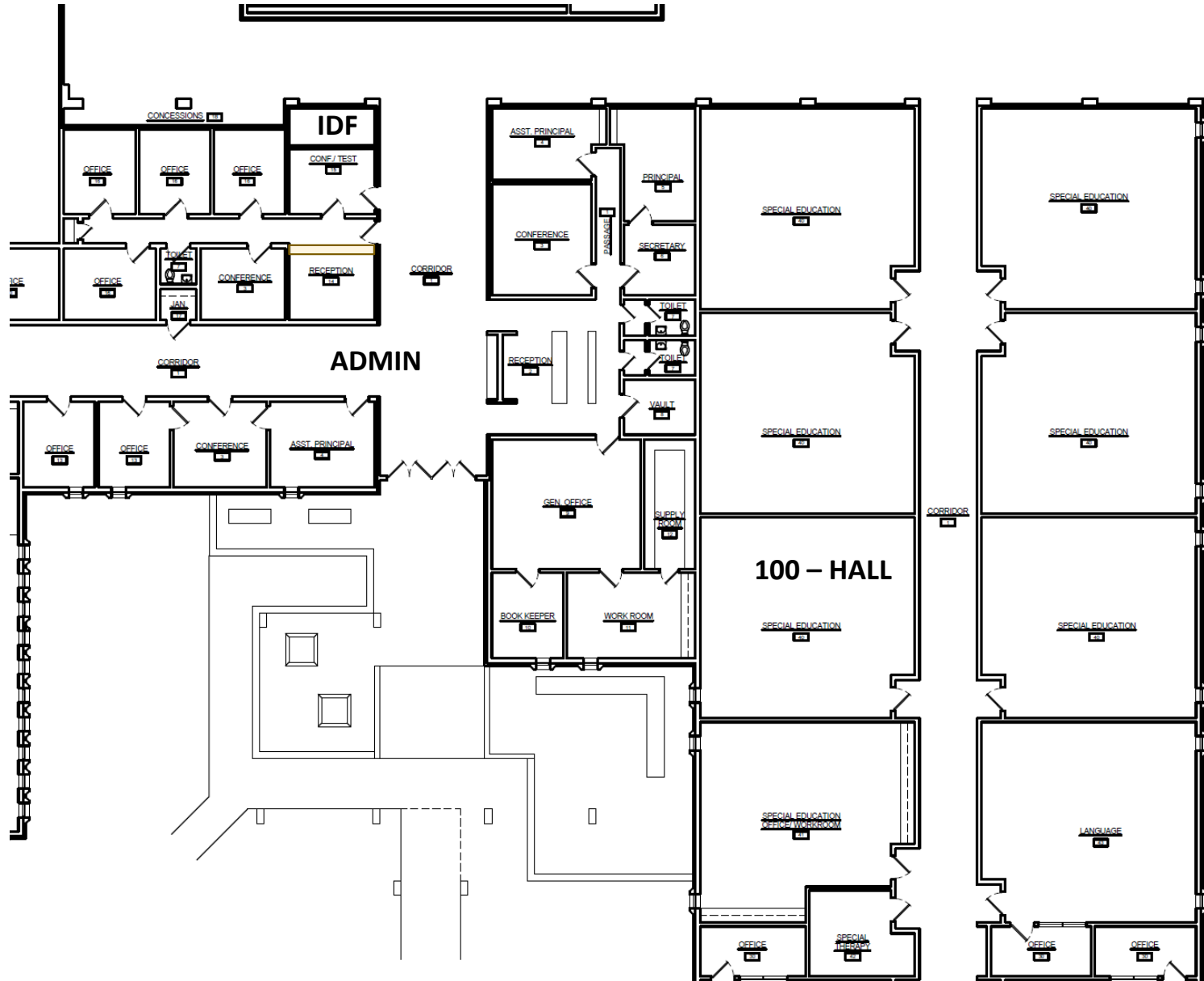
Dothan City Schools System Wide Improvements		
Task Order 2 - Dothan High, Heard, Selma		
School	Project	
Dothan High School (NHS)	600 Hall Reconfiguration	
Dothan High School (NHS)	600 Hall light renovation	
Heard Elementary	dividing SLP/S4	
Selma St.	New Ceiling Grid/Tile in central wing	
Selma St.	Reconfiguration - Classroom to EL/SN LINC	
Selma St.	Reconfiguration - Classroom to SLP/S4	
Selma St.	Media Center ADA upgrades	

10-12 Enrollment Capacity
1,837*
- 1,507 Enrollment 2019-2020

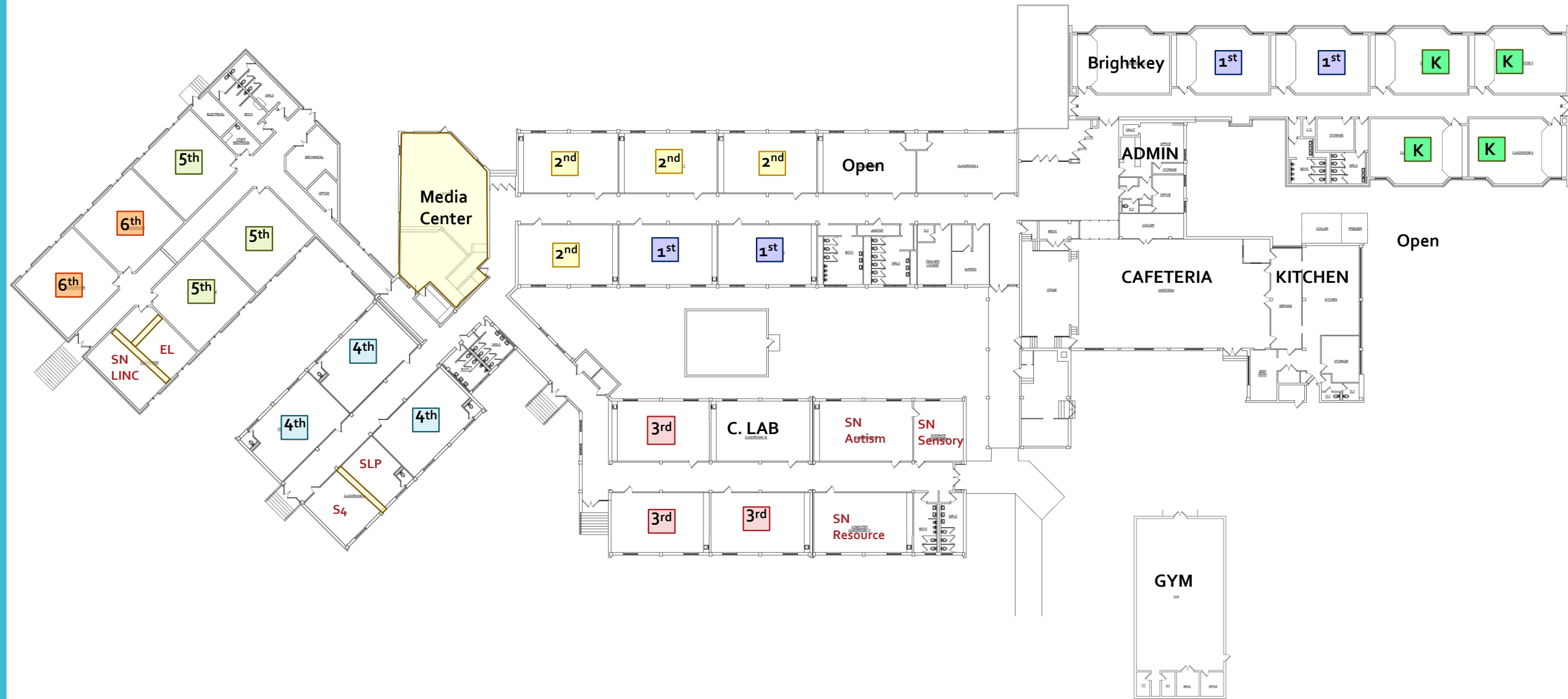
*The total enrollment at Northview is 1837
 However 220 students are dual enrolled and 100 students are part of DTC





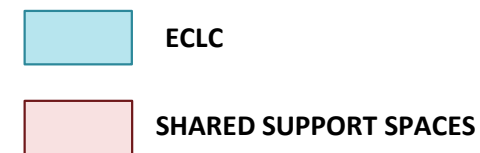
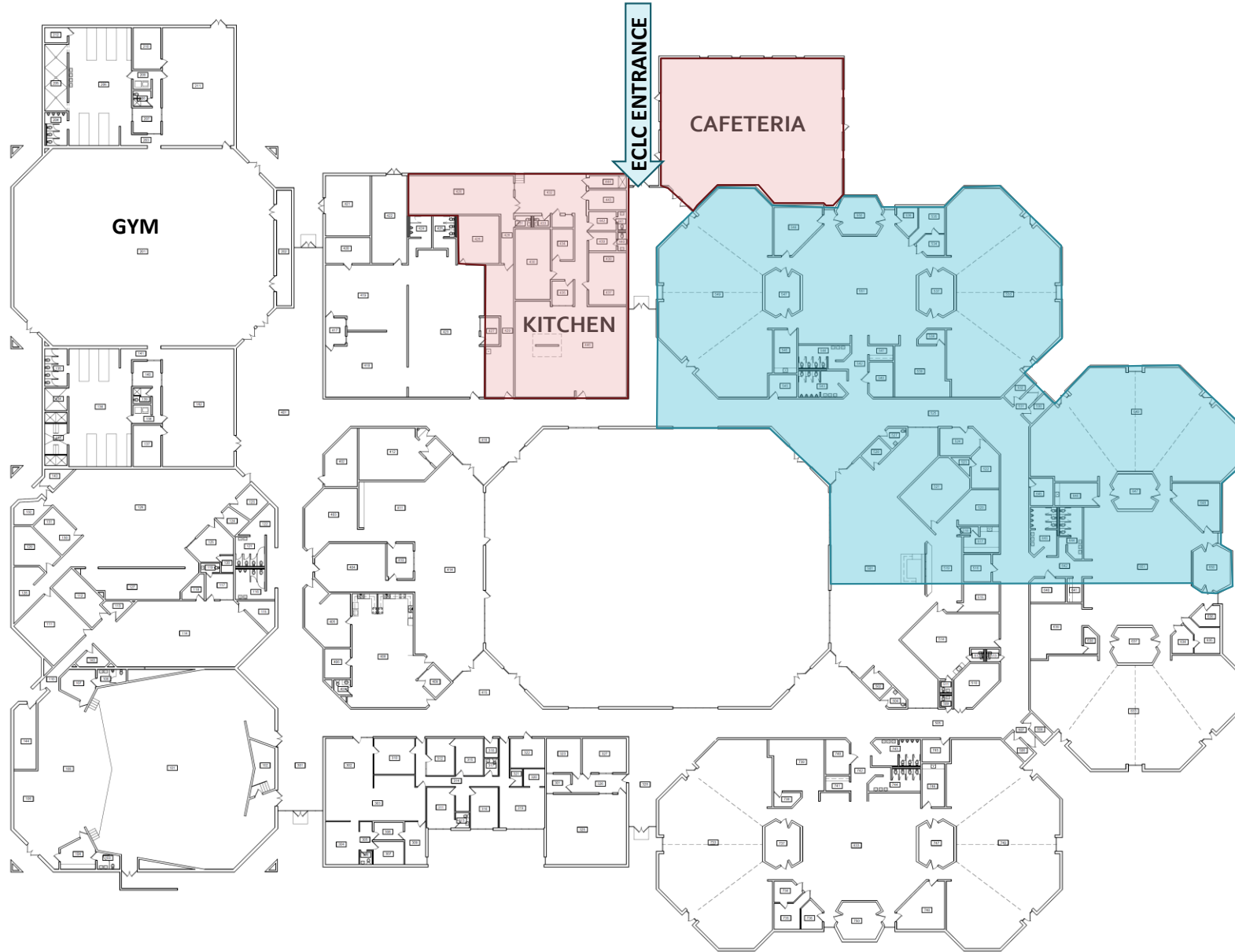


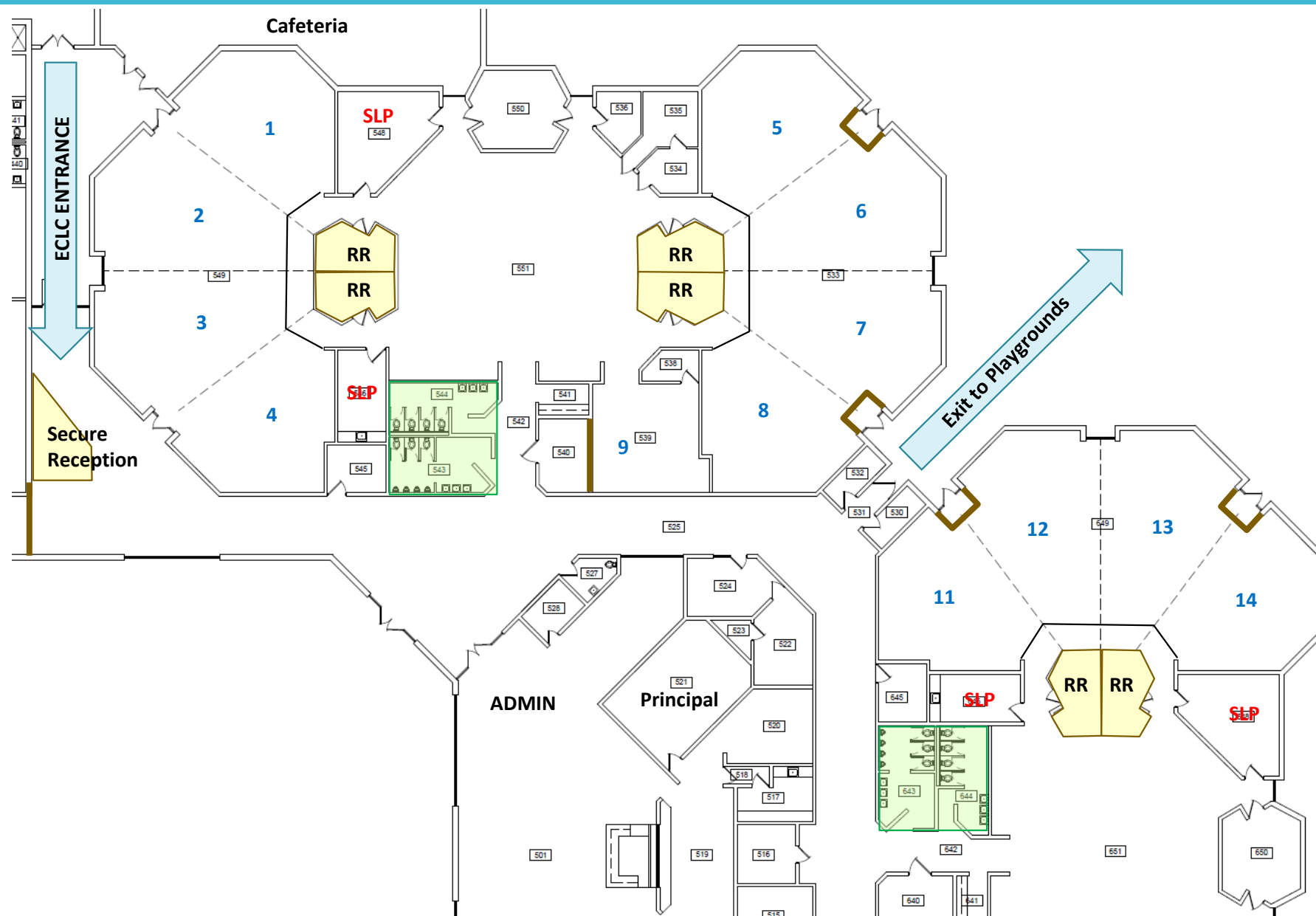


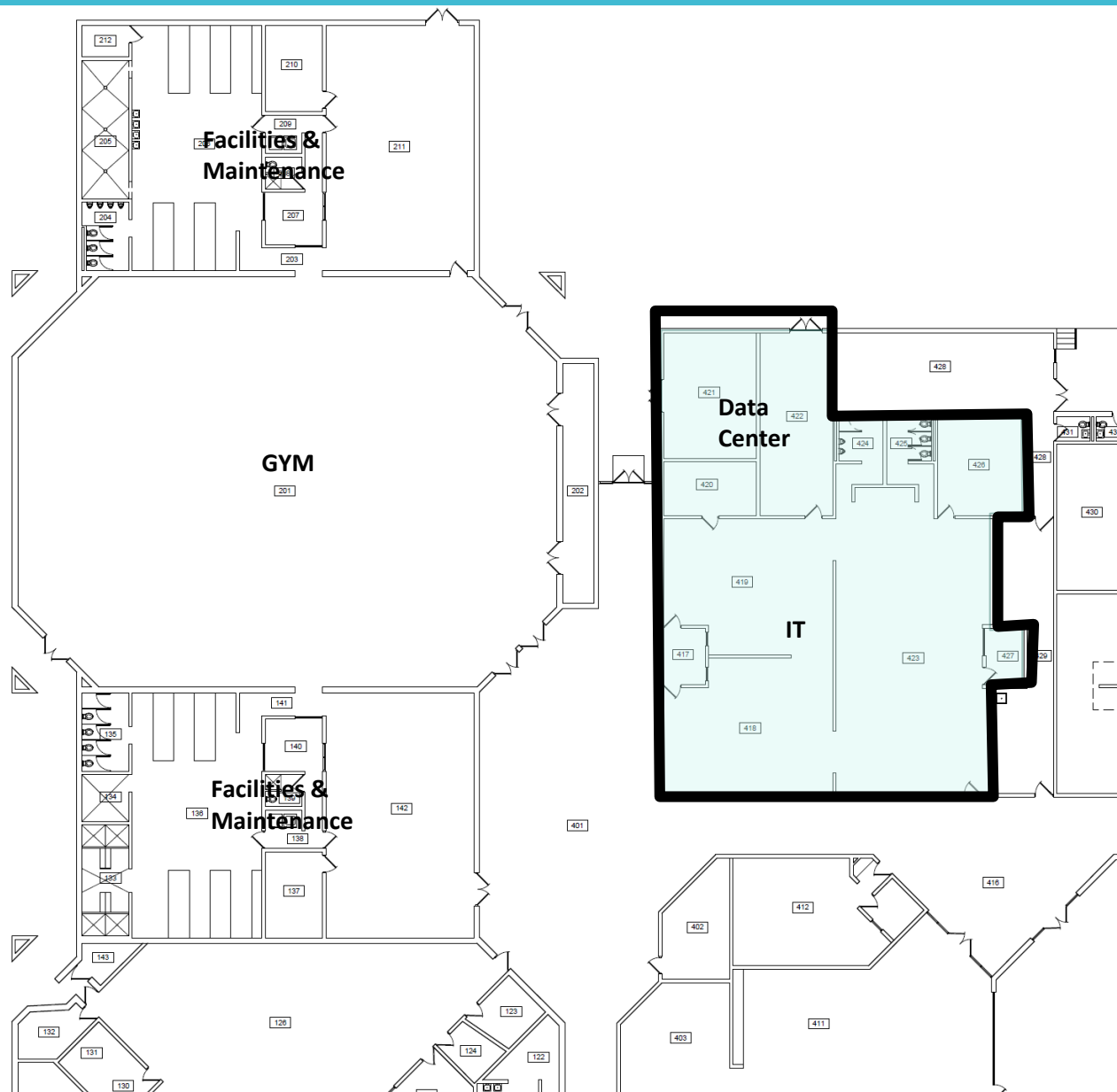


Construction Package's

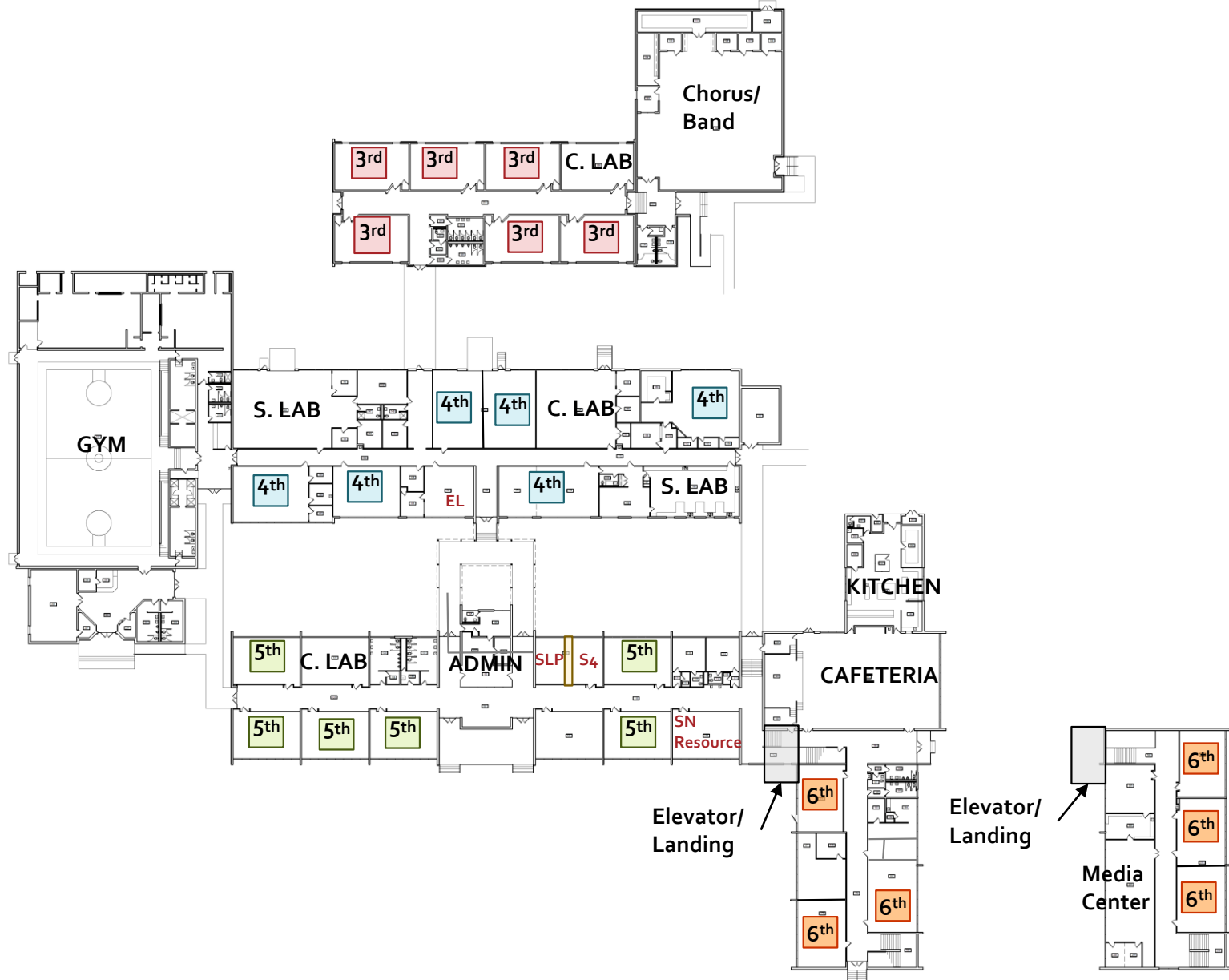
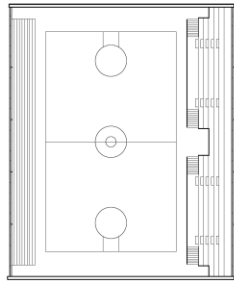
Dothan City Schools System Wide Improvements	
Task Order 3 - Honeysuckle, Beverlye, Girard E/M, Carver, Hidden Lake	
School	Project
Honeysuckle	Data Center
Honeysuckle	ECLC - New Preschool Restrooms
Honeysuckle	ECLC - Renovate Existing Group Restrooms
Honeysuckle	ECLC - New Entrance/Reception
Honeysuckle	ECLC - Classroom Adjustments
Beverly Magnet	New Classroom
Girard Elementary	Reconfiguration - Convert lab to 2 SLP
Girard Middle	Reconfiguration - Convert classroom to SLP & S4
Girard Middle	Remove Cabinetry in classroom
Girard Middle	Exterior - Main wing window replacement
Girard Middle	Exterior - Main wing skin replacement
Carver	Reconfiguration - Convert classroom to SLP & S4
Carver	Power outlets only - Convert classroom to 3rd grade computer lab
Carver	Power outlets only - Convert classroom to 5th grade computer lab
Hidden Lake	Reconfigure classroom to SLP & S4



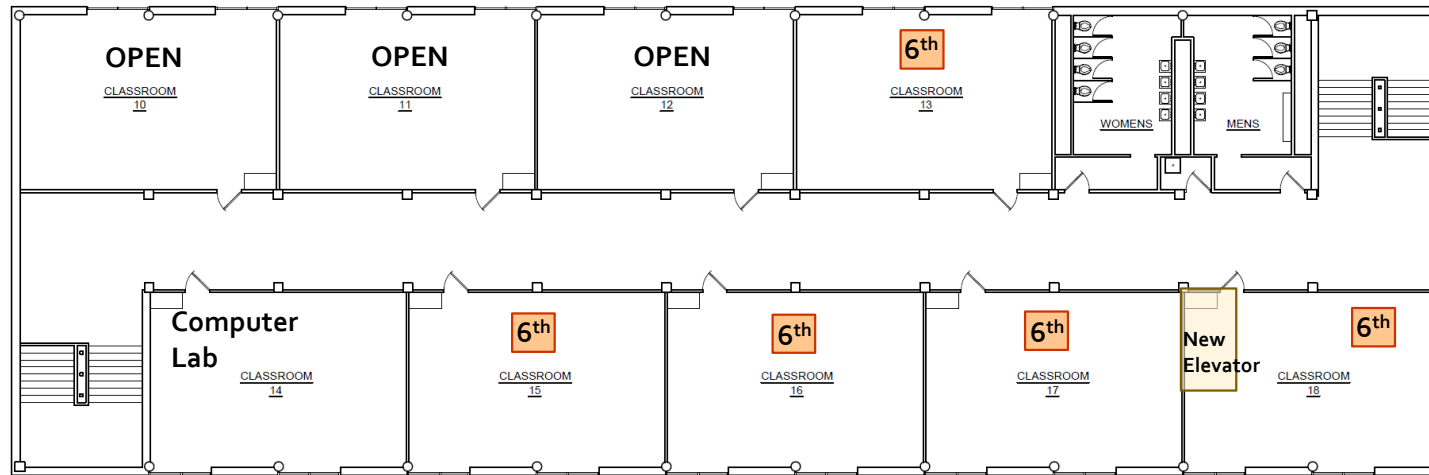




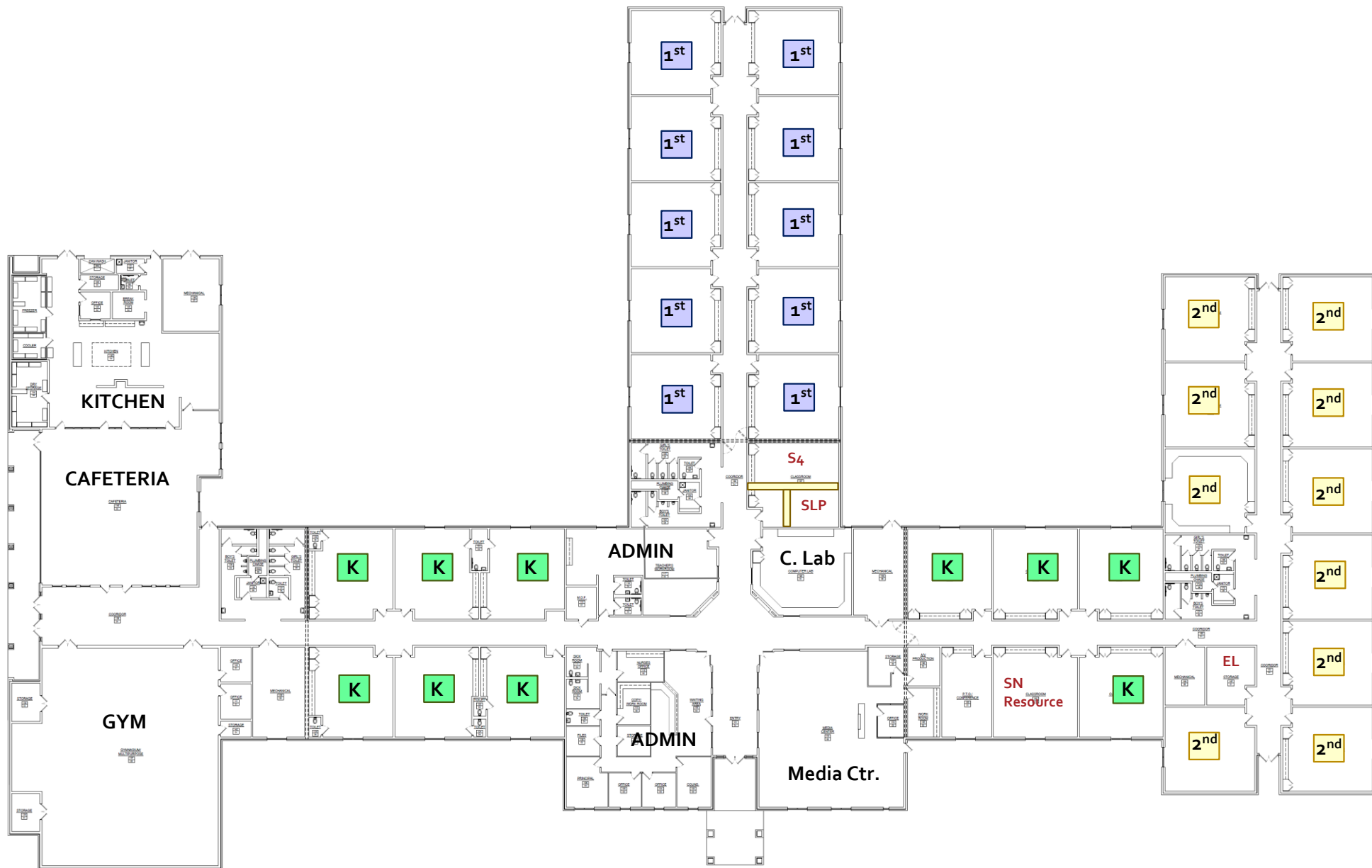








SECOND LEVEL



Construction Package's

Dothan City Schools System Wide Improvements		
Task Order 4 - System Wide Elevators + Davis Gym Restrooms		
<u>School</u>	<u>Project</u>	
Dothan Prep Academy	Elevator Additions/Renovations	
Girard Middle	Elevator Additions	
Carver	Elevator Additions	
Dothan Prep Academy	Davis Gymnasium locker rooms	
Dothan Prep Academy	Davis Gymnasium restrooms	

KEY DATES

- ☐ Solicit Bids – April 11 – May 02, 2019
- ☐ Receive Bids – Thursday May 02, 2019
- ☐ Award Bids – May 16 – 20, 2019
- ☐ Pre-Construction – May 20 – 27, 2019
- ☐ Construction Start – May 28, 2019
- ☐ Substantial Complete – July 26, 2019
- ☐ Final Complete – August 09, 2019



SYSTEM-WIDE MASTER PLANNING
Capital Improvement Plan
March 15, 2019

