

# D'AMATO

*Commercial*

*Industrial*

*Institutional*

*Luxury Residential*

*Mission-Critical*

400 Middle Street | Bristol, CT 06010

860.583.3489

[www.damatoconstruction.com](http://www.damatoconstruction.com)

An aerial photograph of a dam rehabilitation project. The dam is a concrete structure with water flowing over it. A large blue circular overlay is centered over the dam, containing the title 'ORGANIZATION HISTORY' in white, bold, sans-serif font. In the foreground, a blue and black tracked excavator with 'D'AMATO' written on its arm is working on the ground. The background shows a dense forest of evergreen trees and a grassy area.

# **ORGANIZATION HISTORY**

*Dam Rehabilitation Project, Waterbury Bureau of Water*

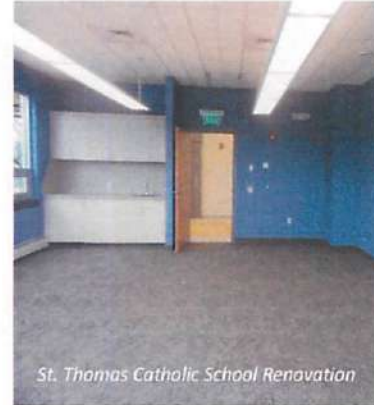
# D'AMATO

## ORGANIZATION HISTORY

It all began in 1961 when Edward Sr., his wife Patricia and brother Anthony (Tut) D'Amato established D'Amato Construction General Contractors. The company later became the D'Amato Construction Co., Inc in April of 1967 specializing in commercial construction.

From the time the D'Amato organization was founded, the company has enjoyed stable and steady growth as a result of late nights, passion for doing the right thing and making the customer our first priority.

Today, along with their father Edward Sr., Edward Jr., Thomas and Susan coordinate the daily operations of our organization. Building on skills and lessons learned over years of working with their parents. Those same lessons are being instilled upon the third-generation family ownership team who are working hand in hand to maintain our many generational clients as well as expand our enterprise into the future.



D'Amato has the background and the expertise to successfully complete a project and provide value to our clients. Our team of professionals are some of the best in the construction industry discipline. Our company has grown for almost five decades starting as a small operation and becoming a sizable and far-reaching organization.

Today D'Amato is stronger than ever. We are a modern company providing reliable old-fashioned service to our commercial, industrial, institutional, luxury residential and situationally driven "mission-critical" customers. We are a company of our word, entrenched in ethical behavior and community involvement. A company looked upon as an example of how to do business.





# ***PROFILE: AT A GLANCE***

*Intake Upgrades, Connecticut Water Company*

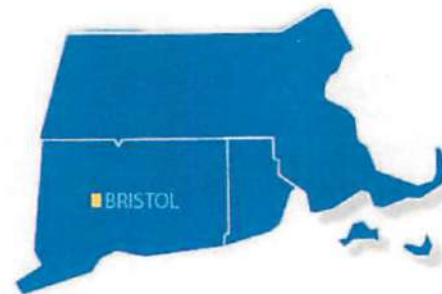
# D'AMATO

## PROFILE: AT A GLANCE

At D'Amato we specialize in a diverse number of disciplines in our industry.

- ✓ Athletic & Recreation
- ✓ Banking & Financial
- ✓ Childcare & Early Childhood
- ✓ Commercial
- ✓ Concrete & Specialties
- ✓ Demolition (Class A)
- ✓ Educational
- ✓ Environmental Management
- ✓ Foodservice & Quick-serve
- ✓ Governmental
- ✓ Healthcare / Institutionalized Health
- ✓ Heavy Highway
- ✓ Industrial
- ✓ Luxury Residential
- ✓ Mission-Critical
- ✓ Nucor Building Systems Vendor
- ✓ Parking Management
- ✓ Petroleum Construction
- ✓ Sanitation & Treatment Facilities
- ✓ Site Work
- ✓ Utilities

### LOCATION IS KEY




*D'Amato is centrally located in Bristol, outside of Hartford, CT making us easily accessible to customers in the Connecticut, Massachusetts, and Rhode Island areas.*

Within each discipline we can offer our customers a multitude of different services. We self-perform carpentry, concrete, demolition, plumbing and site work trades, which allows us to effectively cost control and manage any type of project schedule. Our company has a preferred listing of qualified sub-contractors to complete any type of project.



We have offered our services to clients whose endeavors range from \$300 to \$52 million. All personnel are available to new and repeat clients for 24-hour emergency response. Customers such as banking institutions and professional office clients rely on our around-the-clock services because of our timely response, attention to detail and professional decorum. Our years of experience coupled with the finest in project management enable us to achieve the most demanding goals.

A photograph of a forest with tall trees and green grass. A large, semi-transparent teal circle is overlaid on the center of the image. Inside the circle, the text "PROCURE, DESIGN, BUILD & MAINTAIN" is written in white, bold, italicized capital letters.

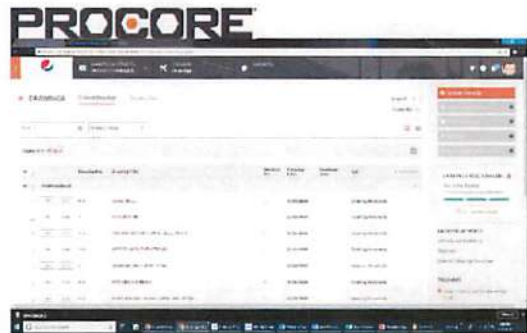
***PROCURE,  
DESIGN,  
BUILD &  
MAINTAIN***

# D'AMATO

## PROCURE, DESIGN, BUILD & MAINTAIN

D'Amato's larger organizational capabilities are comprised of real estate and property management services creating a unique basket of services. From land acquisition and construction to property management, our in-house services are complete. Whether you are looking to design/build or you have exactly what you want in mind, we are here to assist you until completion and beyond.

D'Amato's internal bidding and collaboration process is highly technical and in-depth. We have the ability to cast a wide net among qualified vendors and sub-contractors in order to put together a competitive price or budget for your project. Our pricing and budgeting is transparent and detailed so our customers can comprehend where they stand and are armed with detailed information to make the best possible business decision moving forward.



We consistently provide serious potential clients with cost estimates for projects of any kind and any scope. Our office professionals are ready and prepared to quote a comprehensive value oriented price for your project. D'Amato Construction has one of the most comprehensive family owned value-added services around. We can take your investment and make it work for a lifetime. We are partners in your success.





***CONSTRUCTION  
FLEET***



# D'AMATO

## CONSTRUCTION FLEET

Our sizable construction fleet of more than 80 pieces of heavy equipment enables us to tackle almost any project. Our extensive fleet of additional support equipment allows us to complete these projects efficiently.



We are an organization that rigorously maintains and turns over our fleet. Over 80% of our company's fleet is late-model and is part of a rigorous and repetitive maintenance and replacement schedule. At D'Amato we are proud of our fleet and are well known for having equipment that is visually clean and operates reliably.



We operate our own in-house repair facility dedicated to maintaining and keeping our fleet in top operating condition. The dedicated staff provides everything from scheduled maintenance to large scale repair operations which reduce downtime and improve workflows. Our staff is also extremely knowledgeable in the fabrication of many specialty tools and project jigs. These fabricated tools and jigs are designed and built in our repair shop for use on specific project sites. Having the capability of custom fabricating a solution to an on-the-job problem provides our crews significant advantages in the field.



# ***EMERGENCY SERVICES & DEPTH OF STAFF***

*Dam Rehabilitation, Connecticut Department of Energy & Environmental Protection*

# D'AMATO

## EMERGENCY SERVICES & DEPTH OF STAFF

No matter what the emergency we respond swiftly with the labor and materials needed to resolve a problem. Our organization is made up of many self-sustaining crews that are outfitted to respond to a multitude of situations and resolve an issue in minimal time. All crews are outfitted with the right tools, the right technology, and the right resources at their fingertips. In addition, we provide facilities that are capable of supplying crews in the field with continuous additional resources if requested.



*Regional Water Authority 54" Water Main*



*Park River Conduit Sediment Removal*



*1 of 2 Service & Repair Response Vehicles*

At D'Amato we employ almost every trade across the spectrum. When we respond to any emergency we are able to send demolition personnel, diesel mechanics, engineers, experienced equipment operators, experienced labor personnel, interior tradesmen, masons, master carpenters, plumbers, site work personnel, steel fabricators, superintendents, support staff, etc. Our labor staff's skills are diverse and sizable enough to respond to your worst facility nightmare. If there is a trade we do not cover, we have a comprehensive listing of sub-contractors and vendors that are equipped to respond to our call within hours. Our company has provisions with many vendors who will rearrange their schedules, equipment and labor forces in a moment's notice to respond to our requests. Many of these vendors have had working relationships with our company for 30 years or more.



# ***SPECIALIZED SERVICES***

*Elevated Tank Demolition, Connecticut Water Company*

# D'AMATO

## SPECIALIZED SERVICES

### Class A Demolition

D'Amato can provide specialized demolition and removal solutions for cantilevered, elevated, free standing and pedestal type structures. We also hold the unique ability to structurally dismantle a facility while maintaining its normal operation(s).

Prior to each demolition project an internal team is assembled that outlines the concerns, strategy, health/safety and hazards prior to the execution of a project. All stakeholders are brought to the table in developing a solution that fits the customer's needs and satisfies all rules and regulations.



### Utility Services

D'Amato specializes in new installation of critical water and sewer utilities. We boast a deep bench of specialized tools, uniquely outfitted equipment and shoring that are used in installation.



When it comes to utility repair our ability to promptly respond to private and public water and sewer utilizes is unmatched. What sets D'Amato apart from our competition is specialized equipment, manpower and resources.

### Specialized Rigging, Transportation & Storage Solutions

Our organization holds the ability to move and transport on/off-road, oversized and overweight items and components. In order to facilitate the transport of items and components we also have the capacity have to rig the item's removal and/or installation prior to and after transport. We maintain a large warehouse and dedicate a portion to receive and store critical items for our customers.

# D'AMATO

## Fleet Repair Services (For Hire)

Our organization opens its state-of-the-art repair shop to select contractors and municipalities. Turn to D'Amato for your company's routine maintenance and heavy repairs for your equipment, diesel trucks and fleet vehicles.

The image features a blue-toned background with a grid of light spots, resembling a digital or data visualization. A large, dark blue circular shape is positioned in the lower-left quadrant, containing the word "TECHNOLOGY" in white, bold, italicized capital letters.

***TECHNOLOGY***

# D'AMATO

## TECHNOLOGY

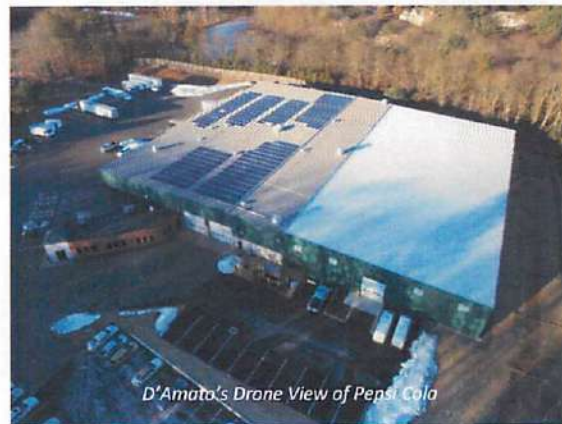
Our people employ state-of-the-art technology in every facet of our business. Our Estimation Department utilizes cutting-edge technology to perform bidding and streamlines the process because of it. We have fostered this technological process and have required all of our subcontractors to adopt this same process thus reducing the time it takes to bid and value engineer a project. This directly correlates to more accurate pricing and better communication between D'Amato and our subcontractors.

Technology in our office goes much further than just the bidding process. We have been able to utilize hardware and software technology in remote surveillance of projects, security, multimedia and digital photography allowing us to keep our customers better informed and protected. We have also made available basic requirements, safety requirements, insurance requirements, Safety Data Sheets and other important information with the creation of our online Vendor Service Center for subcontractors.

Outside of the office all tradesmen are utilizing best practices in their fields of competency. All superintendents are equipped with the latest technology in project management software and associated techniques. At D'Amato all site work crews utilize the newest GPS computerized software along with the newest surveying equipment allowing D'Amato to lay out a project site correctly the first time. This data is shared in real time with our Engineering Department allowing us to foresee problems ahead of time that could impact our customers and lead to costly project changes. Our Engineering Department is able to make adjustments if need be and relay those adjustments to crews in the field digitally to avoid slowdowns.

In the shop our service and repair staff employ diagnostic technology to reduce time spent troubleshooting equipment failures, thus resulting in less equipment downtime. Our service and repair staff utilize state-of-the-art software for annual and quarterly inspections, DOT/FMCSA compliance as well as other maintenance, resulting in a safer company that adheres to required State and Federal regulations.

At D'Amato our people are in-sync with your project on and off the site ensuring accuracy, quality, timeliness and safety.



*D'Amato's Drone View of Pepsi Cola*





***BUSINESS  
CONTINUITY &  
MISSION-CRITICAL  
SERVICES***

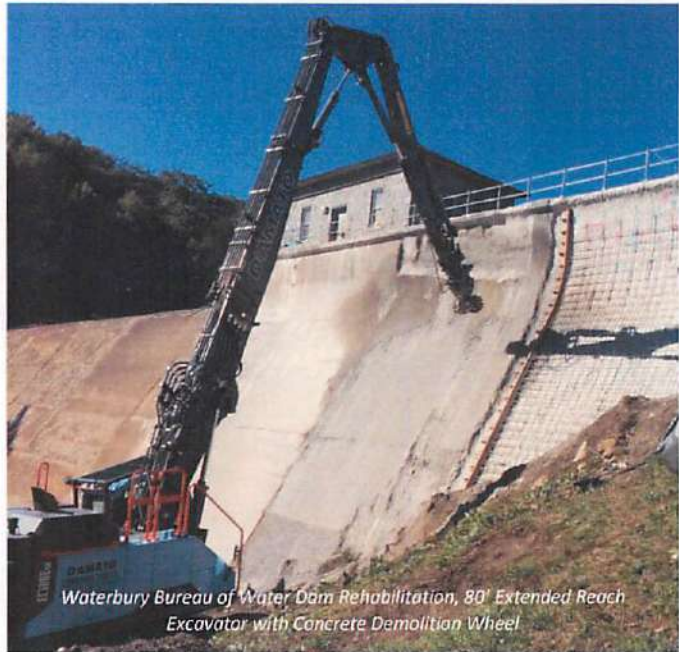
*Ingraham Manor Skilled Nursing Facility*

# D'AMATO

## BUSINESS CONTINUITY & MISSION-CRITICAL SERVICES

Our entire organization has been designed and tested to be fully functional during long term power outages or threats from severe weather. We stock large quantities of construction materials such as block, plywood, sheetrock and other key components at our 50,000 square foot warehouse facility to guarantee our ability to respond to our customers when others cannot.

Our administration and supervisory staff are on generator power so that we can keep working. At D'Amato we also house large quantities of frequently used consumable items and mission critical distillate fuels, compressed gases and lubricants. D'Amato maintains enough fuel capacity to keep our entire fleet moving for upwards of one month completely cut off from the consumer economy. We are able to maintain this level of preparedness through our own secure company owned and maintained fuel storage terminal and facilities.



*Waterbury Bureau of Water Dam Rehabilitation, 80' Extended Reach Excavator with Concrete Demolition Wheel*

In addition, to ensure the continuity of our business technology, we have invested significant resources in planning through our Information Technology Disaster and Recovery Plan as well as our Business Continuity and Disaster Preparedness Plan of Action. As part of our technology continuity plans, D'Amato has state-of-the art computer server technology to house general business as well as project information. We employ a unique and secure backup and restore method to ensure the safety of our critical information and communications records ensuring minimal business interruption in a disaster situation.

Furthermore, D'Amato owns and maintains a private low-band analog radio channel that can be utilized by all crews. All crew leaders, key vehicles and crucial office personal have access to fixed and mobile low-band radio devices that are stringently tested and maintained on a regular basis to ensure reliability. Our central station is located atop one of Connecticut's highest elevations providing state-wide and limited out-of-state coverage. D'Amato's central station is part of a dependable backbone of communications services that are on generator power to ensure "always on" capabilities.



***SAFETY  
&  
COMPLIANCE***

*Maintenance Facility, Lake Compounce Family Theme Park*

# D'AMATO

## SAFETY

At D'Amato safety is of the utmost importance. Our team of professionals hold numerous certifications and have years of education under their belts. It is with this emphasis on safety that our company has been operating for almost 50 years with a superior experience modification rating and excellent standing with OSHA.



We take pride in our focus on safety. Safety is not just a policy in our handbook that all our employees must follow, it's a culture. This culture of safety is taught and executed by everyone at D'Amato. From keeping a project site orderly and clean to looking out for one another always, it is our mission to send everyone home at the end of the day to their families. Our supervisory staff holds safety meetings regularly on each project site to make sure that crew members have the most up-to-date knowledge on safety issues at their respective projects. All crew members and supervisory staff are sent to continuing education along with company held seminars regularly. Our office maintains an up-to-date suite

of safety and health programs that are in OSHA compliance along with a Hazcom system for a Safety Data Sheets for each and every item and chemical used by our employees and is accessible at each project location and at each D'Amato facility. D'Amato also takes Hazcom a step further and makes our database accessible to subcontractors and customers 24 hours a day via our website.

At D'Amato we have a zero-tolerance policy for behavior that puts our own people, vendors, owners and the general public in jeopardy and it is enforced. Our equipment is maintained and vast amounts of resources are put into making sure that any piece of equipment, vehicle or tool that is used is safe to drive or operate. Our company has a stringent vehicle maintenance program that promotes safety and repair, rather than overuse and neglect. Our service and repair staff utilize our FleetMentor systems to accurately track and record federal annual inspections, semi-annual preventative maintenance inspections and other driver based compliance requirements to make sure our fleet is 100% compliant with all State and Federal regulations.



We invite you to inquire about our practices and policies. Safe conditions create a safe completion.

400 Middle Street | Bristol, CT 06010  
860.583.3489  
www.damatoconstruction.com

# D'AMATO

## FEATURED PROJECTS

<b>Thomaston Saving Bank</b> New Construction Bristol, CT \$2,400,000	<b>Yarde Metals</b> Structural Repairs Southington, CT \$2,600,000
<b>ESPN</b> ESPN2 Addition Bristol, CT \$1,100,000	<b>Yarde Metals</b> Addition Southington, CT \$4,200,000
<b>Lake Compounce Theme Park</b> Splash Harbor, Boulder Dash & Ghost Hunt Bristol/Southington, CT \$4,200,000	<b>Yarde Metals</b> Addition Mansfield, MA \$1,800,000
<b>ESPN</b> Fiber Optic Utility Relocation Bristol, CT \$1,500,000	<b>ESPN</b> Cafeteria Renovation Bristol, CT \$450,000
<b>Eastern Regional Little League Headquarters</b> Handicapped Seating Accessibility Bristol, CT \$265,000	<b>ESPN</b> 9 Meter Teleport Antenna Foundation Bristol, CT \$50,000
<b>Eastern Regional Little League Headquarters</b> Roofing, Siding & Door Replacement Bristol, CT \$550,000	<b>ESPN</b> New Store Renovation Bristol, CT \$125,000
<b>The Hartford Insurance</b> Parking Lots 10,11 & 13 Renovations Hartford, CT \$2,200,000	<b>CVS Caremark</b> New Store Building Bristol, CT \$5,800,000
<b>The Hartford Insurance</b> Parking Lots 5, 7 & 9 Renovations Hartford, CT \$300,000	<b>Connecticut Natural Gas</b> Pre-engineered Compressor Building Rocky Hill, CT \$475,000
<b>Town of Bethel</b> Water Storage Tank Bethel, CT \$2,200,000	<b>Aquarion Water Company</b> Pump Station Salisbury, CT \$900,000
<b>United Technologies</b> Buildings 4, 8 & 10 Parking Lot Renovations Farmington, CT \$3,200,000	<b>Bristol Preschool Childcare Center</b> Former School – New Daycare Facility Bristol, CT \$4,100,000

# D'AMATO


<b>Patricia D'Amato Residences Jennings North End</b> Former School – Active Senior Housing Bristol, CT \$3,800,000	<b>Pediatric Care Center</b> New Medical Office Building Bristol, CT \$900,000
<b>Fire Department, City of Bristol</b> Renovations Bristol, CT \$850,000	<b>Muzzy Field Stadium, City of Bristol</b> Renovations Bristol, CT \$1,200,000
<b>St. Thomas Catholic School</b> Addition Southington, CT \$750,000	<b>Connecticut Water Company</b> Pump Station Plainfield, CT \$750,000
<b>Wheeler Clinic – Northwest Village School</b> Entrance Addition & Security Upgrades Plainville, CT \$300,000	<b>Lake Compounce Theme Park</b> Campground & RV Park Bristol/Southington, CT \$1,800,000
<b>Aquarion Water Company</b> Water Storage Tank Ridgefield, CT \$650,000	<b>Shepard Meadows Therapeutic Riding Center</b> Show Arena Bristol, CT \$350,000
<b>Connecticut Water Company</b> Maintenance Facility Farmington, CT \$1,200,000	<b>Immaculate Conception Church</b> Lyceum Center Terryville, CT \$1,200,000
<b>Sovereign Bank</b> New Construction Bristol, CT \$850,000	<b>United Water Company</b> Water Storage Tank Site South Kingston, RI \$360,000
<b>St. Matthews Catholic School</b> Addition Bristol, CT \$750,000	<b>St. John's Episcopal Church</b> Addition & Remodel Bristol, CT \$485,000
<b>Connecticut DEEP</b> Dam Rehabilitation Griswold, CT \$4,500,000	<b>Connecticut DEEP</b> Dam Rehabilitation Higganum, CT \$6,500,000
<b>Park River Conduit</b> Sediment Removal & Maintenance Hartford, CT \$3,100,000	<b>Lexington Partners – Flanagan's Landing</b> Soil Remediation Glastonbury, CT \$340,000
<b>Regional Water Authority</b> Backwash System East Haven, CT \$250,000	<b>Regional Water Authority</b> Upgrade 54" Water Main Piping North Branford, CT \$640,000

# D'AMATO

## REFERENCES

	Betancourt, Shane	860.384.3593	Yarde.com
	Blanchette, Keith	860.366.3569	ESPN.com
	Brick, Jerry	860.778.7392	LakeCompounce.com
	Casagrande, Jim	860.391.2544	CTwater.com
	Chase, Arnold	860.539.4779	
	Fois, Mark	203.395.4604	Aquarion.com
	Foster, John	603.433.5654	Chiengineering.com
	Gamber, Christopher	860.205.7407	JM-A.com
	Kenny, Marty	860.520.1005	Lexingtonct.com
	Knox, Stan	401.789.0271	SUEZ.com
	Lapinski, Craig	860.646.2469	FandO.com
	Laplante, Robert	518.380.0128	Key.com
	Lincoln, Bob	860.919.5031	Bristolct.gov
	Lombardo, David	203.753.9800	Waterburyct.org
	Marden, Dennis	860.301.8987	Key.com
	Marcik, Larry	203.401.6709	Rwater.com
	Masotti, Rich	860.766.4292	ESPN.com
	Mattioli, Tony	860.283.3405	Thomastonsavingsbank.com
	Meder, Nick	860.315.0447	CTwater.com

# D'AMATO

	Melo, Rev. Nicholas	860.628.4713	Christthekingparishct.org
	McCann, Shawn	860.729.5304	Bestcleaners.com
	Raymond, Todd	860.224.6333	Wheelerclinic.org
	Wright, Corey	860.585.4730	Littleleague.org



# D'AMATO

## PRIVATE & PUBLIC SCHOOL EXPERIENCE

### PRIVATE EXPERIENCE

**Loomis Chaffee School – Windsor**

Loop Road reconstruction project due to flooding of the Farmington River

**St. Anthony Catholic School – Bristol**

School addition consisting of an elevator, commercial kitchen and café/meeting hall

**St. Matthew Catholic School – Bristol**

School Library Media Center addition as well as remodel of select existing classrooms

**St. Thomas Catholic School – Southington**

School addition consisting of a grand entry, elevator, additional classrooms and lab space

### PUBLIC EXPERIENCE

**Bristol Board of Education**

Miscellaneous work at various district schools

**Bristol Preschool Childcare Center – Burlington Avenue Branch – Bristol**

New construction & historical construction

**Bristol Preschool Childcare Center – West Street Branch – Bristol**

Renovate as new

**Chamberlain School – New Britain**

Completed renovation project due to bankrupt contractor

**Memorial Boulevard Intra-District Arts Magnet School – Bristol**

Renovate as new/new construction

**Southington Board of Education**

Completed renovation projects due to bankrupt contractors

**West Hartford Board of Education**

Miscellaneous work at various district schools & contractual maintenance

## EXPERIENCE NARRATIVE

Although we feel as school experience is integral to the project, we also know that our experience in niche techniques is what makes D'Amato the most qualified firm. Most schools are constructed by Construction Management firms who actually DO NOT perform the work. Although D'Amato has engaged as a Construction Manager on many projects, we mostly engage as a Construction Manager as Constructor, which allows us to totally control the project schedule, which would translate to the Town of Tolland having control over the project schedule.

Our company has a Class A demolition license which allows us to literally dismantle a facility while it is occupied. We have extensive experience dismantling facilities while being occupied as well as manufacturing facilities while in physical product production. D'Amato specializes in a majority of the complex techniques that would be utilized in this project such as underpinning of large slabs and foundations and phased demolition. D'Amato's extensive infrastructure construction abilities lend to our ability to complete a complex project of this magnitude and sets us apart from normal school Construction Management firms.

In addition, we have the unique capability of controlling the project with our own skilled multi-trade labor forces which include carpentry, concrete, demolition and site work. D'Amato also boasts a deep bench of specialized equipment which lends directly to the project schedule. D'Amato is one of a short list of "true" General Contracting firms within the State of Connecticut whom would be qualified for this type of project.

## OTHER RELATIVE EXPERIENCE

### 10 Main Street – Bristol

5 story former manufacturing facility being proposed as new municipal government center

### Communications Site Management – Farmington

Complex telecommunications and transmission facility, various projects. Facility has strict safety and security requirements.

### ESPN – Bristol

Construction of ESPN 2 broadcast facility – now home of Baseball Tonight, transmission, TOC work and other complex projects

### Key Bank – Connecticut & Massachusetts Branches

Multiple facilities remodeled as new, site work and complex fit-out for bank communications. Complexity revolves around people flow and critical time schedules.

### The Hartford Insurance Group – Hartford & Windsor

Site work and miscellaneous projects at World Headquarters and branch facilities. Complexity revolves around people flow and strict safety and security standards.

<b>Yarde Metals – Southington</b>
-----------------------------------

Roof collapse with Class A demolition work while maintaining production as well as simultaneously constructing large addition.
--