

SITE DATA

Year Built:
Year Modernized:
Student Population (2017 – 2018): 60-80
Capacity:
Utilization:
Number of Classrooms:

- 5 Traditional
- 1 Bike Shop
- 1 Teaching Kitchen
- 1 PE Room
- 1 Art

Number of Portables: 0

PRINCIPAL PRIORITIES

1. More storage needed.
2. Better sound-proofing of existing Social Studies room, which is also used for music class.
3. Irrigation for teaching garden.

Program Support Needs

- Addition of a commercial kitchen to add a culinary arts program desired.

Functionality of Space

- The Music Room (located in the space labeled “Social Studies”, not in a shared space with Science, as erroneously shown in the school floor plan handout). Room is not functional and needs sound proofing.
- PE space is used for storage due to lack of storage: more storage space is needed.



635 B Street, Davis | www.king.djUSD.net

CATEGORY:

- [0] No Work
- [1] Minor Work
- [2] Minor Modernization
- [3] Standard Modernization
- [4] Major Modernization / Reconfiguration
- [5] Complete Replacement

General Organization

Category [-]

- Spaces are generally well daylit, especially the centrally located Main Room, which many of the perimeter spaces immediately connect to.

Parking

Category [-]

- Parking lot is shared with senior center across the parking lot. There is no shortage.
- Lot is generally okay and shaded by trees.
- Parking lot access is a challenge. Both driveways allow in- as well as egress. They should be dedicated In and Out.

Concrete Paving

Category [0]

- No issues reported.

AC paving

Category [0]

- No issues reported.

Ramps & Stairs

Category [-]

Site Amenities

Drinking Fountains

Category [0]

Shade Shelter

Category [-]

Bike Area

Category [-]

Covered Walkways

Category [-]

Athletic Fields & Facilities

Category [0]

- No issues reported.

Landscape

Category [0]

- No issues reported.

Irrigation

Category [0]

- No issues reported for landscape irrigation.

Fencing & Gates

Category [0]

- No issues reported.

SECTION 5



FACILITY CONDITION ASSESSMENT MARTIN LUTHER KING (Jr) HIGH

CATEGORY:

- [0] No Work
- [1] Minor Work
- [2] Minor Modernization
- [3] Standard Modernization
- [4] Major Modernization / Reconfiguration
- [5] Complete Replacement

ASSESSMENT OF BUILDINGS**Exterior****Overall Rating: Category [0]**

- No issues reported.

Paint**Category [0]**

- No issues reported.

Door / Frames / Locks**Category [2]**

- Roll-up doors at Exercise and Shop are not watertight. They face in the general direction of the prevailing wind and leak.
- An overhang at the roll-up door to the Shop is needed.

Windows**Category [0]**

- In general, in good condition throughout campus.

Roof**Category [0]**

- No access to roofs and no issues were reported.

ADA Compliance**Category [0]**

- No issues reported.

Interior**Overall Rating: Category [-]****Food Service****Category [-]**

- Improvement of food service desired (also see notes under Program Support Needs).

Restrooms**Category [0]**

- No issues reported.

ASSESSMENT OF SYSTEMS**Site Utilities****Domestic Water****Category [0]**

- No issues reported

Fire Protection**Category [0]**

- No issues reported

Gas**Category [0]**

- No issues reported

Sewer**Category [5]**

- Major issues reported with sewer.

Storm Drain / Drainage**Category [0]**

- No issues reported.

Mechanical**Overall Rating: Category [5]**

- No heat and air in Exercise room.
- New HVAC and control Systems needed.

Plumbing**Category [0]**

- No issues reported.

Electrical Power**Category [-]**

- Campus is ~12 years old. Equipment in good shape.
- Siemens, cutler-hammer, and others (no standard manuf.)
- Voltage-120/208A-3-phase
- T8 lights throughout
- No preferred lighting and controls vendors

Fire Alarm**Category [-]**

- Manual pull stations
- Smoke detectors and alarms – verify full coverage, likely not automatic
- No fire sprinklers – verify as-builts
- Gamewell is the preferred manufacturer
- Integrated Fire System – preferred vendor/consultant
- Fiber to all sites – verify as-builts

Technology Overall Site -**Category [4]**

- Campus Distribution for Telecommunications – The campus has a conduit infrastructure which supports a Main Distribution Frame (MDF) in the Library building, along with dedicated Intermediate Distribution Frames (IDF) per building. Conduit infrastructure is ran on the canopies from building to building. No additional conduit infrastructure is needed to support low voltage infrastructure systems. Existing fiber optic backbone cabling is 62.5um along with copper backbone from MDF to each IDF room. All backbone cabling needs to be replaced.
- Recommendation: Upgrade fiber optic backbone cable to 50um (OM3) and single mode (OS2) from MDF to each IDF to obtain network speed/bandwidth and future growth

Exterior Paging System**Category [0]**

- Exterior PA speakers are on campus

Exterior Security Cameras**Category [0]**

- Campus currently does not have security cameras. None are required

Exterior Wireless Access Points**Category [3]**

- Campus currently does not have exterior wireless access points

Building Systems:**MDF**

- Three floor standing data racks with ladder racking and wire managers. No Telecommunications Main Grounding Busbar (TMGB). Poor cable management. CAT5 network cabling to all workstations. Room has dedicated cooling. No master clock system. No proper grounding and bonding. Security Camera system no longer functional. No Intrusion detection system. All horizontal cabling is in surface mounted wiremold in classrooms and corridor.

Provide Telecommunication Main Grounding Busbar (TMGB) [4].**Provide dedicated cooling 24/7 [5]****Upgrade fiber optic backbone cabling to multimode 50um (OM3) and single mode (OS2) [4]****SECTION 5**

CATEGORY:

- [0] No Work
- [1] Minor Work
- [2] Minor Modernization
- [3] Standard Modernization
- [4] Major Modernization / Reconfiguration
- [5] Complete Replacement

Lighting
Category [-]

Data/Voice

Category [5]

- Full VoIP CAT6A structured cabling
- Full wireless coverage

Intercom/PA/Clock

Category [0]

- Carehawk System

CATV

Category [0]

Intrusion Detection

Category [5]

- Honeywell System
- Administration, Gymnasium, Computer Lab, Library

Security Camera

Category [0]

Access Control

Category [5]

- All doors

Audio Visual

Category [4]

- Classroom room technology, Interactive boards.
- Conference rooms, flat screen TV's
- Culinary Arts Video Streaming
- Digital Menu Boards (60" min.)

Assistive Listening System

Category [4]

SECTION 5





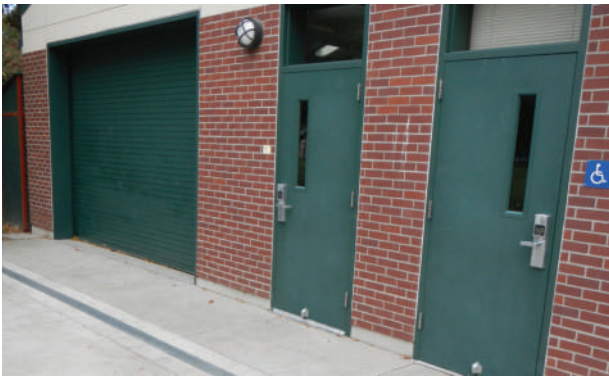
Concrete Paving



Hardcourts



Parking



Exterior Door Hardware



Administration Office



Garden



Windows



Skylights



Faculty Work / Lounge

SECTION 5





Lounge



Shared Space



Typical Classroom



Music



Science Lab



Home Economics



Computers



Art

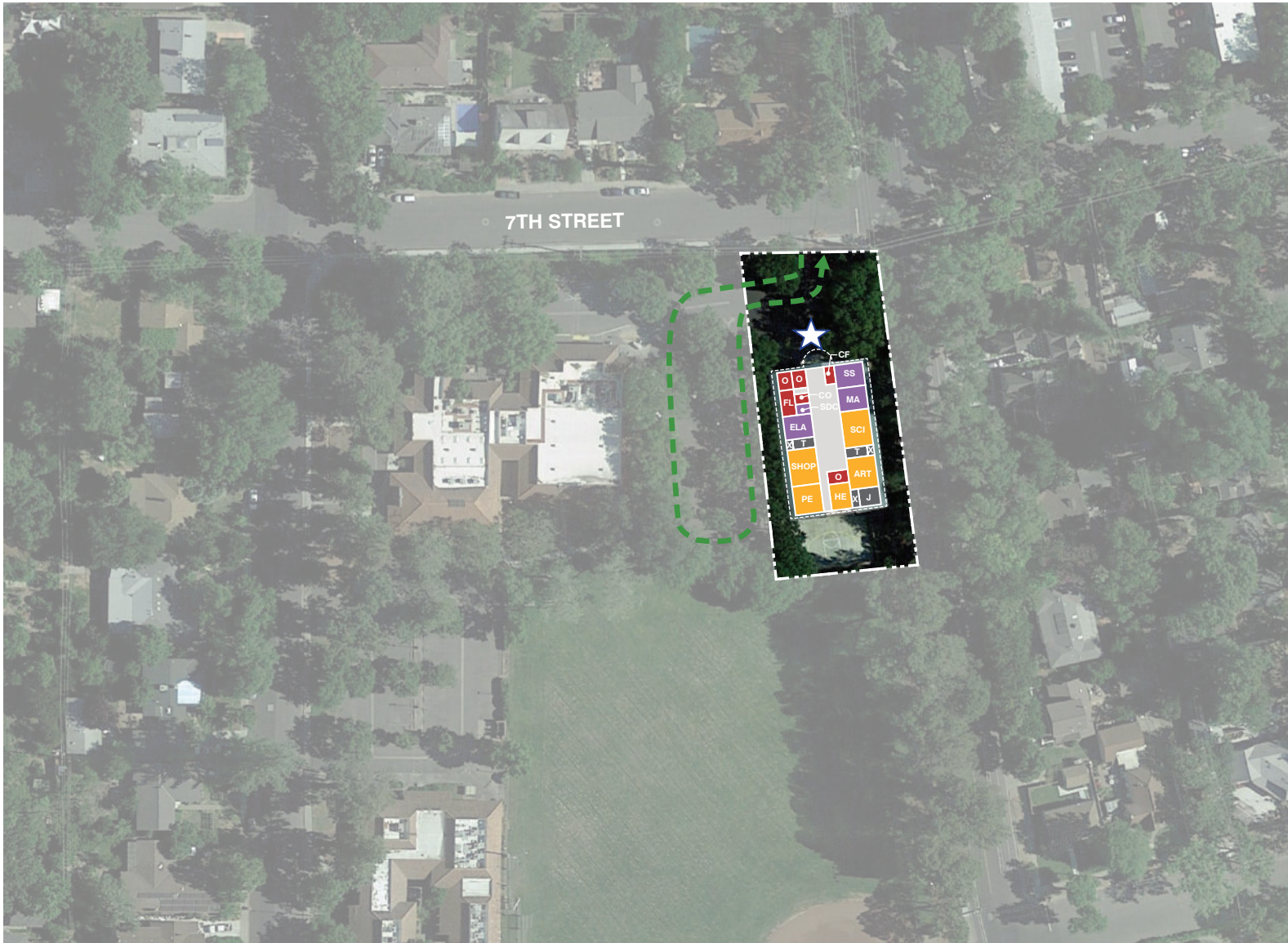


Bike Shop

SECTION 5



FACILITY CONDITION ASSESSMENT MARTIN LUTHER KING (Jr) HIGH



Classrooms, CR
 ELA - English Language Arts, FLA - Foreign Language
 INC - Inclusion, MA - Math, MI - Math Intervention
 R - Reading Intervention, SS - Social Studies
 TA - Teaching Assistant





Electives / Labs
 CS - Computer Science, HE - Home Economics
 P - Practice, SCI - Science, TECH - Technology
 WD - Woodshop, WT - Weight Room

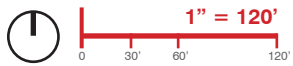
Student Services
 CO - Counseling, ED - Emotionally Disturbed
 EL - English Learners, INTV - Intervention
 OT - Occupational Therapy, PSY - Psychology
 SP - Speech, RSP - Resource Specialist Program

Shared Spaces
 LC - Learning Center, LIB - Library
 LR - Locker Room (G - Girls, B - Boys)
 MPR - Multi-Purpose Room

Admin / Faculty
 FW - Faculty Work, FL - Faculty Lounge,
 O - Office, CF - Conference Room

Support Spaces
 X - Storage, T - Toilets, U - Utility,
 J - Janitor, K - Kitchen

-  Portable Classrooms
-  Main Entry
-  Drop-Off
-  Electrical Transformer

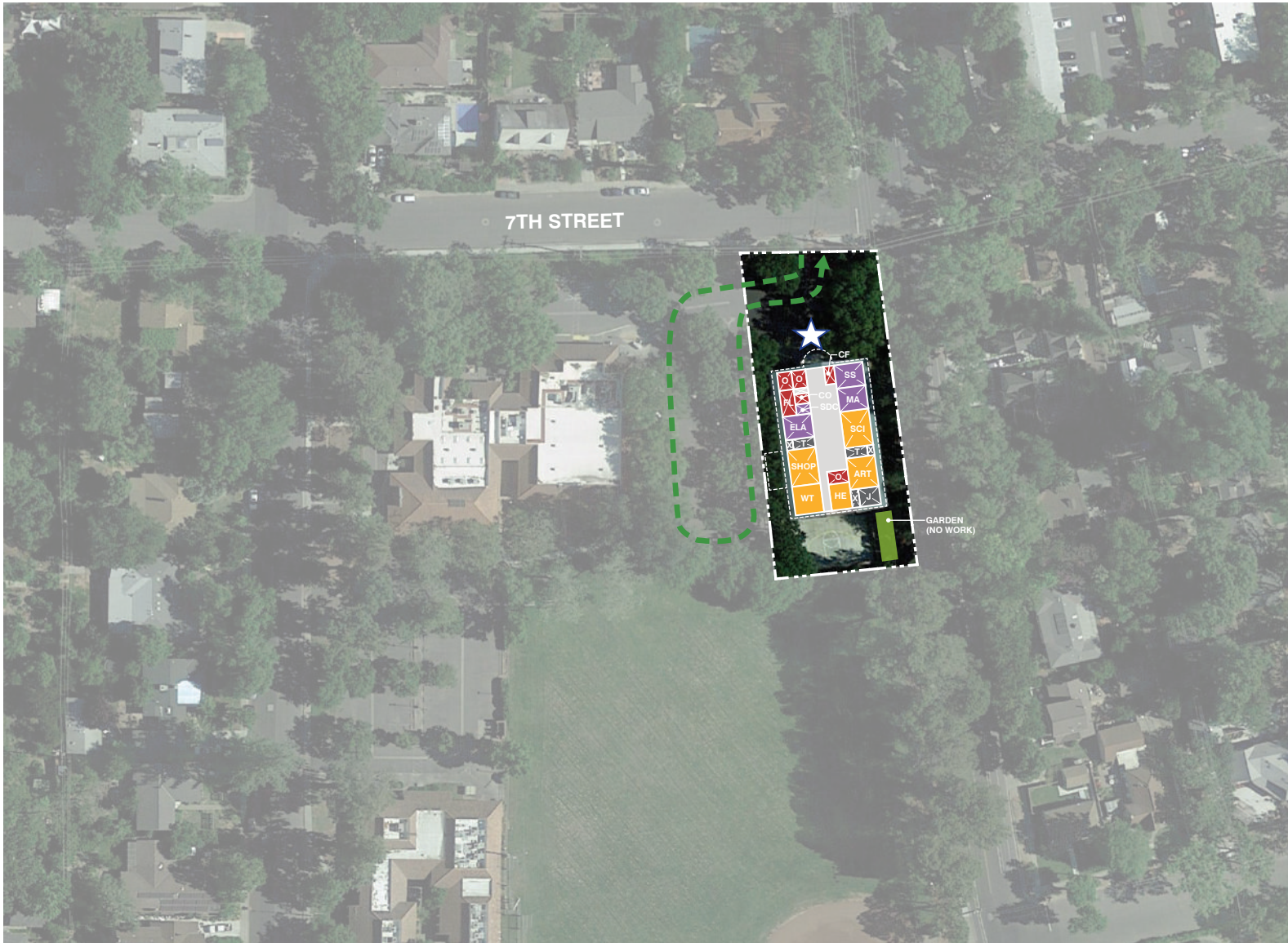


SECTION 5



**EXISTING CAMPUS PLAN
 MARTIN LUTHER KING (Jr) HIGH**





Classrooms, CR
 ELA - English Language Arts, FLA - Foreign Language
 INC - Inclusion, MA - Math, MI - Math Intervention
 R - Reading Intervention, SS - Social Studies
 TA - Teaching Assistant

Electives / Labs
 CS - Computer Science, ENG - Engineering
 HE - Home Economics, MKR - Maker
 P - Practice, SCI - Science, TECH - Technology
 WD - Woodshop, WT - Weight Room

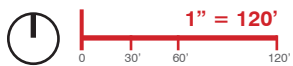
Student Services
 AC - Academic Center, CO - Counseling
 ED - Emotionally Disturbed
 EL - English Learners, INTV - Intervention
 LRC - Learning Resource Center
 OT - Occupational Therapy, PSY - Psychology
 SP - Speech, RSP - Resource Specialist Program

Shared Spaces
 CNTY - County, LC - Learning Center
 LIB - Library, LR - Locker Room (G - Girls, B - Boys), MPR - Multi-Purpose Room
 TM - Team Room, TR - Training Room

Admin / Faculty
 FW - Faculty Work, FL - Faculty Lounge,
 O - Office, CF - Conference Room

Support Spaces
 FS - Food Service / Concessions
 X - Storage, T - Toilets, U - Utility,
 J - Janitor, K - Kitchen

- Portable Classrooms
- Main Entry
- Drop-Off
- Electrical Transformer
- Outdoor Learning / Playfields
- Rubberized Surface
- Hardcourts
- Parking Lot
- NO WORK
- MODERNIZATION
- RECONFIGURE
- NEW CONSTRUCTION



SECTION 5



**PROPOSED CAMPUS MASTER PLAN
 MARTIN LUTHER KING (Jr) HIGH**



SCOPE OF WORK CATEGORIES	MASTER PLAN COST (2018\$)	GROUP 1 SCOPE	GROUP 2 SCOPE
1. Modernize / Reconfigure Existing Classrooms	\$ -	\$ -	\$ -
2. Existing Building Systems, Toilets & Improved Energy Efficiency	\$ 55,000	\$ 48,000	\$ -
3. Site Utilities & Infrastructure	\$ -	\$ -	\$ -
4. New Construction (Classrooms)	\$ -	\$ -	\$ -
5. Elementary STEM & JrHS/HS Science Programs	\$ -	\$ -	\$ -
6. JrHS/HS Electives Improvements	\$ 46,000	\$ -	\$ -
7. Music, Drama & Performing Arts Improvements	\$ -	\$ -	\$ -
8. MPR, Student Union & Food Service Improvements	\$ 75,000	\$ -	\$ -
9. Physical Education Improvements	\$ 31,000	\$ -	\$ -
10. Staff & Community Support	\$ -	\$ -	\$ -
11. Library & Student Support Services	\$ -	\$ -	\$ -
12. Safety & Security	\$ 42,000	\$ 42,000	\$ -
13. Bike / Car Parking & Drop-Off	\$ -	\$ -	\$ -
14. Outdoor Learning Courts, Quads & Gardens	\$ -	\$ -	\$ -
15. Exterior Play Spaces, Playfields & Hardcourts	\$ -	\$ -	\$ -
16. Next Generation Learning Furniture	\$ 133,000	\$ -	\$ -
17. Technology Infrastructure & Equipment	\$ 197,000	\$ 197,000	\$ -
Total Construction / Project Cost (2018\$)	\$ 579,000	\$ 287,000	\$ -

The following items are excluded from this budget:

- Utility hook-up fees & City connection fees
- Off-site work and traffic signals
- Land acquisition costs
- Temporary classrooms
- Hazardous material surveys, abatement and disposal
- Escalation (costs are in 2018\$)

SECTION 5



COST SUMMARY MARTIN LUTHER KING (Jr) HIGH