

# LOUISIANA BOARD OF REGENTS



**August 22, 2012**

# COMMITTEE MEETINGS



Academic and Student Affairs  
Facilities and Property  
Personnel  
Technology  
Sponsored Programs  
Planning, Research and  
Performance

# ACADEMIC AND STUDENT AFFAIRS

## COMMITTEE



**KAREN DENBY**  
**JEANNINE KAHN**

**Charlotte Bollinger, *Chair***

**Harold Stokes, *Vice Chair***

**Maurice Durbin**

**Chris Gorman**

**Matthew Jewell**

**Albert Sam II**

**Joseph Wiley**

**Representatives from Management Boards**

# AGENDA ITEM III.

## Letter of Intent

### BFA in Digital Media

Louisiana State University Shreveport



# RECOMMENDATION

Senior Staff recommends that the Committee grant *approval* of the Letter of Intent to develop a proposal for a Bachelor of Fine Arts in Digital Media at Louisiana State University at Shreveport. The proposal should address those issues raised in the staff analysis.

# AGENDA ITEM IV.

## **Proposed New Academic Programs**

### **AAS in Polysomnographic Technology**

Delgado Community College

### **AAS in Automotive Technology**

Northshore Technical Community College

### **AGS & Certificate of General Studies**

Northshore Technical Community College

### **BS in Medical Laboratory Science**

LSU – Alexandria

### **Bachelor of Interdisciplinary Studies**

Southern A&M

# AGENDA ITEM IV.

## **Proposed New Academic Programs**

**PBC in Accounting** *and*

**PBC in Occupational Health, Safety & Technology**

University of Louisiana - Monroe

**MS in Criminal Justice** *and*

**MS in Kinesiology**

University of Louisiana – Lafayette

# RECOMMENDATION

Senior Staff recommends that the Committee grant the following:

► *Conditional approval of the following programs, with progress reports due by 1 October, 2013:*

- AAS in Polysomnographic Technology at DCC;
- AAS in Automotive Technology at NTCC;
- Associate of General Studies and Certificate of General Studies at NTCC;
- BS in Medical Laboratory Science at LSUA;
- Bachelor of Interdisciplinary Studies at SU A&M;
- MS in Criminal Justice **and** the MS in Kinesiology at ULL

► *Approval of the PBC in Accounting and the PBC in Occupational Health, Safety & Toxicology at ULM*



# AGENDA ITEM V.

## Modifications to Existing Academic Programs

MAT in Social Sciences to MA in Social Sciences  
Grambling State University

PhD in Conservation Biology to PhD in Integrative Biology  
University of New Orleans

PMC in Family Nurse Practitioner (FNP) & Family  
Psychiatric/Mental Health Nurse Practitioner  
(FPMHNP) (through the ICMSN)  
Nicholls State University

# RECOMMENDATION

Senior Staff recommends that the Committee grant the following:

- ▶ *Approval* to GSU to change the Master of Arts in Teaching Social Sciences to a Master of Arts in Social Sciences;
- ▶ *Approval* to UNO to change the PhD in Conservation Biology to a PhD in Integrative Biology; and
- ▶ *Approval* of the PMC in Family Nurse Practitioner with authorization for immediate implementation, and the PMC in Family Psychiatric/Mental Health Nurse Practitioner with implementation for Fall 2013, at Nicholls to be offered through the Intercollegiate Consortium for the Master of Science in Nursing (ICMSN). Progress reports are due by September 1, 2013.

# AGENDA ITEM VI.

## Consent Agenda

- A. LSU A&M – Request for Reauthorization: Stephenson Disaster Management Institute
- B. LSU Law Center – Request for One-Year Conditional Approval: Energy Law Center
- C. Routine Staff Reports
  - 1. Staff Approval of Routine Academic Requests
  - 2. Progress Reports for Conditionally Approved Programs/Units
  - 3. Past Due Reports for Programs/Units
  - 4. Letters of Intent/Proposals in Queue

# RECOMMENDATION

Senior Staff recommends the Committee receive and approve the items on the Consent Agenda.



# FACILITIES AND PROPERTY COMMITTEE



**BARBARA GOODSON**

**Robert Bruno, *Chair***

**W. Clinton Rasberry, Jr., *Vice Chair***

**Charlotte Bollinger**

**Joseph Farr**

**Chris Gorman**

**Matthew Jewell**

**Roy Martin III**

**Joseph Wiley**

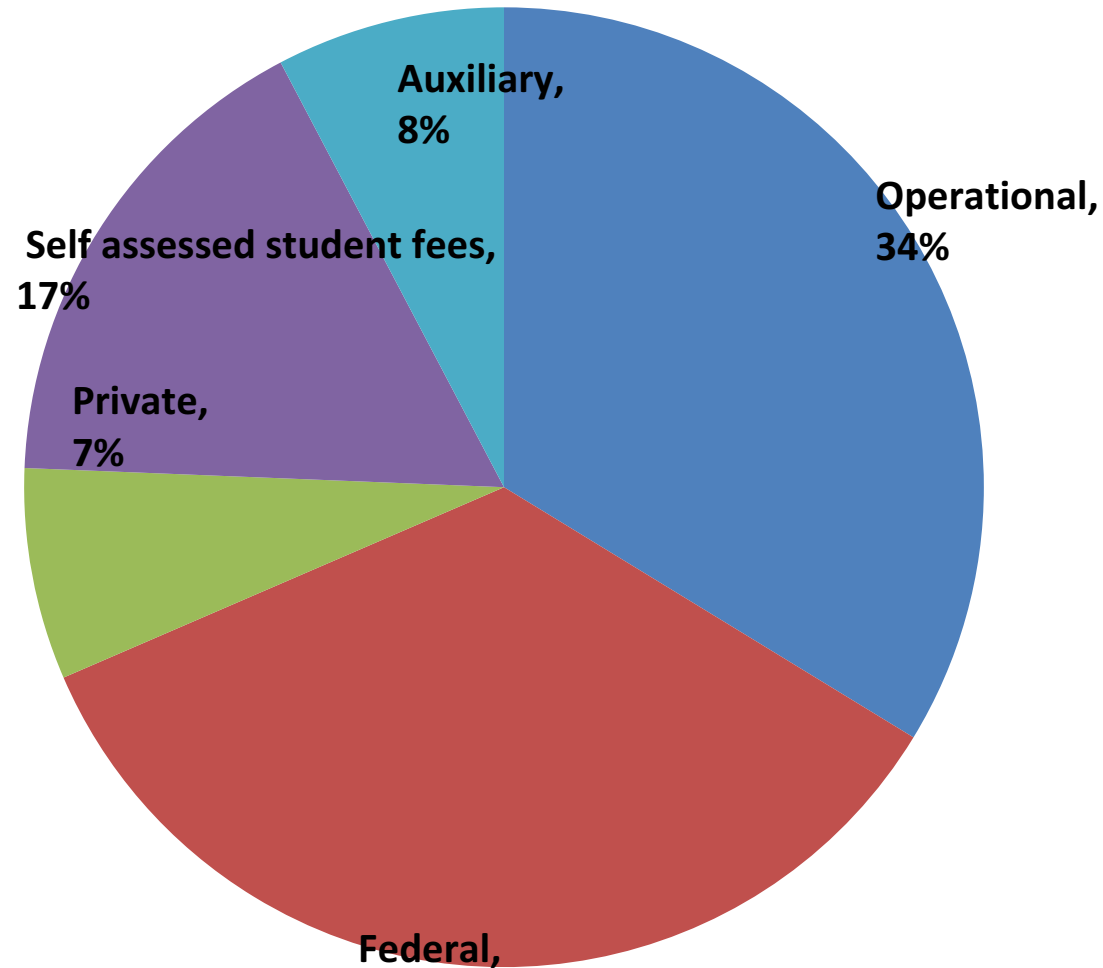
**Representatives from Management Boards**

# AGENDA ITEM III

## Small Capital Projects Report

Institution	Project Description	Cost
NSU	Replacement of synthetic turf system	\$290,421
La Tech	Extension of walkway	\$250,000
LSU Vet	Renovation of Exam Room in small animal clinic	\$475,000
LSU Ag Center	Renovation of laboratories in H.D. Wilson	\$250,000
LSU Ag Center	Renovation of labs - Dean Lee and Weed Science	\$400,000
LSU Ag Center	Burden Center renovations	\$325,000
LSU Ag Center	Pilot processing plant	\$451,000
LSU Ag Center	Land acquisition at Lee Memorial Forest	\$400,000
LSU	Renovation to O.K. Allen Hall	\$177,845
LSU	Renovation to Athletic Administration Building	\$250,000

# Small Capital Projects Funding Sources



# SENIOR STAFF RECOMMENDATION

Senior Staff recommends the Committee approve the Small Capital Projects Report as presented.



# AGENDA ITEM IV

## Interim Emergency Board Request

### Northwestern State University

- Deteriorated roofing on the Nursing Education building located in Shreveport
- Water has penetrated all four floors
- Employees and students utilize the 2<sup>nd</sup> floor lab space
- Child and Family Network program is located on 1<sup>st</sup> floor in newly renovated space
- Estimated cost is \$221,143 for roof replacement and \$175,541 for waterproofing – total \$396,684

# SENIOR STAFF RECOMMENDATION

Senior Staff recommends approval of the request for Northwestern State University to petition the Interim Emergency Board to replace and waterproof the roof, and repair the masonry walls on the Nursing Education building located in Shreveport, Louisiana.

# OTHER BUSINESS – STAFF UPDATES





# PLAQUEMINE WESTSIDE LTC



# PERSONNEL COMMITTEE



Maurice Durbin, *Chair*

Donna Klein, *Vice Chair*

**KIM HUNTER REED**

Robert Bruno

Albert Sam

Harold Stokes

## AGENDA ITEM III.

### Consideration of Transfer of LA GEAR UP from the Board of Regents to LOSFA

Senior Staff recommends Board approval of the internal transfer of LA GEAR UP and the appropriate TO from the Board of Regents to LOSFA.



# TECHNOLOGY COMMITTEE



**TODD BARRÉ**

**Chris Gorman, *Chair***

**Robert Bruno, *Vice Chair***

**Joe Farr**

**William Fenstermaker**

**Matthew Jewell**

**Albert Sam**

# AGENDA ITEM III.

## LONI Overview

The Louisiana Optical Network Initiative (LONI) is a fiber optic network that connects higher education institutions with each other and with high performance computing (HPC) resources. The network was established beginning in 2004 under the leadership and direction of the Board of Regents and it provides a high-bandwidth platform with strong computational capabilities that facilitates research collaboration, rapid data transmission, communications, and access to national research networks that connect the entire fabric of the national and international research and education community.

The LONI Management Council was created by the Board of Regents to provide direction and guidance for the network and to make recommendations to the Board on key operational issues.



# LONI Investment and Return

- **Multiple Layers: Each reinforces the next**
  - 2001-3: Vision 2020, Gov. Foster \$20+ million annually
  - 2004-5: LONI, Gov. Blanco \$4 million annually + \$7.5 million for computer hardware acquisitions
  - 2005: Louisiana Biomedical Research Network (LBRN)--\$16M NIH
  - 2007: CyberTools -- \$12M Statewide NSF/EPSCoR CI project
  - 2007: LONI Institute -- \$15M Statewide project to recruit people
  - 2007: NSF HPCOPS -- \$3.8M TeraGrid project
  - 2009-12: Digital Media Initiative, Gov. Jindal attracts key digital industry
  - 2010: \$20M Statewide NSF/EPSCoR RII in Materials Science
  - 2010: \$6M tri-state NSF/EPSCoR RII Track 2 in Coastal Studies
  - 2010: \$2M NSF ARI-R2 to advance LSU's Data Network Infrastructure
  - 2010: \$1.2M NSF/EPSCoR RII C2 connects Xavier to LONI
  - 2010: LBRN Biomedical Research Network--\$15M NIH
  - 2012: Connect Nicholls to LONI (project in process)
  - 2005-12: Many federal grants and industry partnerships across the state

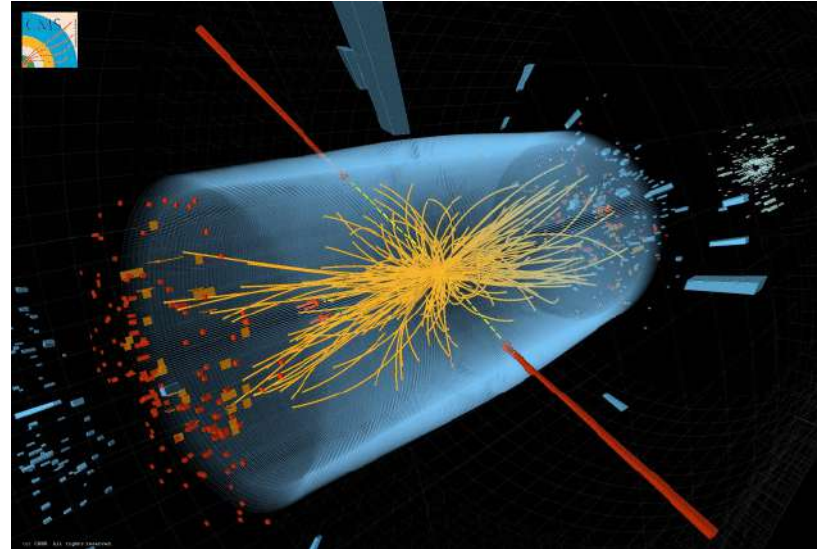
# LONI Added Benefits

- Louisiana Research Infrastructure
- Collaborative relationships and research output
- Centralized investment in critical research tools and capabilities
- Education, training and outreach across institutional boundaries
- Opportunities for centralized information and technology services, management and support
- State-focused efforts and emphasis:
  - Hurricane and storm surge modeling
  - Disaster response and recovery
  - Cyber security
  - Oil spill response and impact assessment/research
  - Economic development connections
  - Workforce development efforts
  - State image and recognition (NSF, Internet 2, NLR)

# Discovery of Higgs Boson

Louisiana Tech researchers used LONI networks and computers to transmit and analyze huge datasets that helped to verify the existence of a particle predicted by the Standard Model of particle physics

- One of the most significant physics discoveries of the past 30 years



# AGENDA ITEM III.

## High Performance Computing

# High-Performance Computing usage across LONI

- Higher Education Research
  - Energy: Flow thru porous media; Materials simulation; BP oil spill
  - Coastal: Storm surge and flood modeling; Environmental contamination from oil spills; Coastal erosion & restoration
  - Materials: Atomistic-level analysis of new materials properties; Protein folding in support of drug manufacturing; Structural analysis
  - Astrophysics: In support of LIGO, simulating potential sources of gravitational radiation
  - Biology/Medical: Analysis of genome sequences; Medical imaging; Protein folding
- Storm-surge modeling to support ...
  - GOHSEP/Coastal Emergency Risk Assessment (CERA) as hurricanes approach the Louisiana coast
  - Coastal Protection & Restoration Authority (CPRA) assessment of the N.O. Hurricane & Storm Damage Risk Reduction System (HSDRRS)

# The Queen Bee

## Dedicated facility - Baton Rouge

- 680 nodes  $\times$  8 cores  
= 5440 cores
- 4 Gb RAM per node  
= 2.88 Tb
- $\sim$  50 TFLOPS
- #23 in the world in June 2007
- #7 in an academic environment



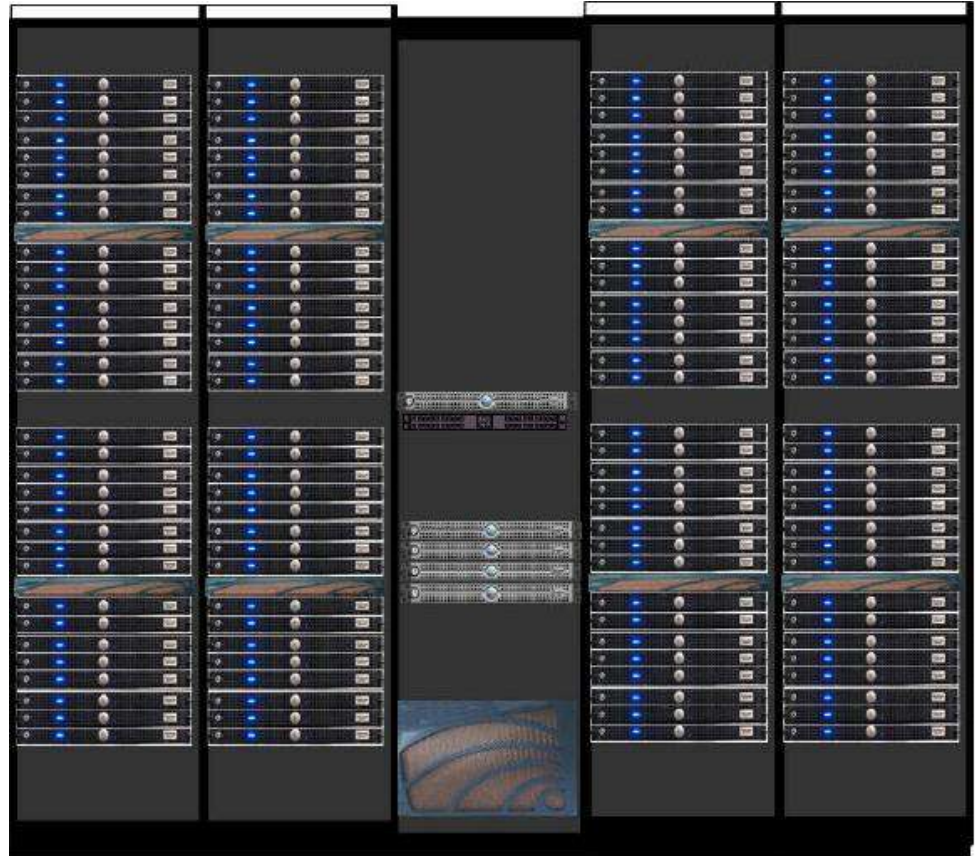


# The worker bees

6 Dell Linux clusters

Located at member institutions

- 132 nodes  $\times$  4 cores  
= 528 cores
- 4 Gb memory per node
- ~ 300 Gb storage
- ~ 5 TFLOPS each



# AGENDA ITEM III.

## Fiber Projects and Issues



# AGENDA ITEM III.

## Budget Update

# AGENDA ITEM IV.

Consideration of LONI Management  
Council Recommendations on Internet  
Usage and Charges

# Internet Usage and Charges

## Subscription

- Campuses are encouraged to individually sign-on to the MPG level of service
  - ✓ Overall network community benefits from that level of service in the aggregate as it provides an ability to guarantee service reliability due to having multiple redundant providers
  - ✓ Allows rates charged to campuses to be minimized
  - ✓ Provides the “headroom” necessary across the network to accommodate extraordinary spikes in usage by campuses or groups of campuses
  - ✓ Allows for growth in demand through the course of the fiscal year.
- Campuses may select a subscription level at the 95<sup>th</sup> Percentile level of service
  - ✓ This level of service will be monitored and reported to the campus periodically. If service consistently exceeds the subscribed level, adjustments in service will be expected in a timely manner.
- Campuses may select a subscription level less than the 95<sup>th</sup> Percentile level due to unique circumstances and/or adjustments in campus service arrangements
  - ✓ LONI staff will consult with campuses to insure appropriate arrangements are being made in a planned and timely manner.
  - ✓ The newly established service level will be monitored and reported to the campus periodically. If service from LONI consistently exceeds the subscribed level, adjustment in service will be expected in a timely manner.

# Internet Usage and Charges

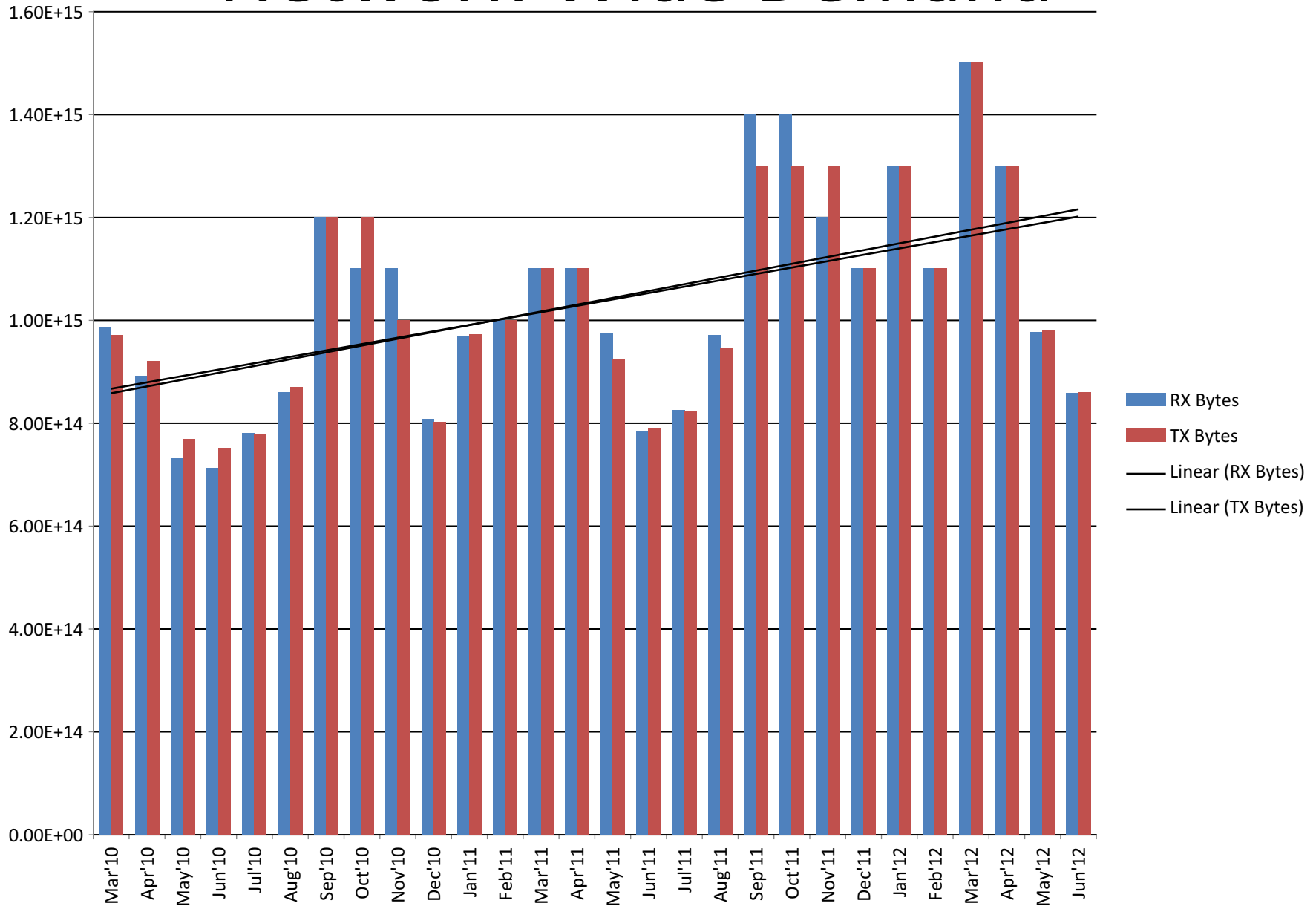
## Charges

- For campuses selecting the MPG level of service the rates applicable are as follows:

Minimum – 249 Mbps	\$18/Mbps	The first 249 Mbps are charged at \$18/Mbps
250 Mbps – 499 Mbps	\$16/Mbps	The next 249 Mbps are charged at \$16/Mbps
500 Mbps – 999 Mbps	\$14/Mbps	The next 499 Mbps are charged at \$14/Mbps
1000 Mbps +	\$12/Mbps	1 Gbps and over are charged at \$12/Mbps

- For campuses selecting the 95<sup>th</sup> Percentile level or less the rate will be \$20/Mbps

# Network-Wide Demand



# RECOMMENDATION

Senior Staff recommends that the Committee approve the recommendations from the LONI Management Council for Internet Usage and Charges.

# SPONSORED PROGRAMS COMMITTEE



**KERRY DAVIDSON**  
**CARRIE ROBISON**  
**JIM GERSHEY**

**Harold Stokes, *Chair***

**Joe Farr, *Vice Chair***

**William Fenstermaker**

**Chris Gorman**

**Matthew Jewell (*student*)**

**Donna Klein**

**Albert Sam**

# AGENDA ITEM III.

ENDOWED PROFESSORSHIPS:  
ADDRESSING THE BACKLOG AND  
FUTURE DIRECTIONS OF THE  
PROGRAM



# BOARD OF REGENTS SUPPORT FUND PROGRAMS & SUBPROGRAMS

## *ENDOWED CHAIRS FOR EMINENT SCHOLARS*

- a. Competitive Program
- b. Restricted Bequests

## *RESEARCH AND DEVELOPMENT*

- a. Research Competitiveness Subprogram (RCS)
- b. Industrial Ties Research Subprogram (ITRS)
- c. Awards to Louisiana Artists and Scholars (ATLAS)

## *ENHANCEMENT*

- a. Traditional Enhancement
- b. Undergraduate Enhancement
- c. Enhancement Program for Two-Year Institutions
- d. Endowed Professorships**
- e. Endowed First-Generation Undergraduate Scholarships

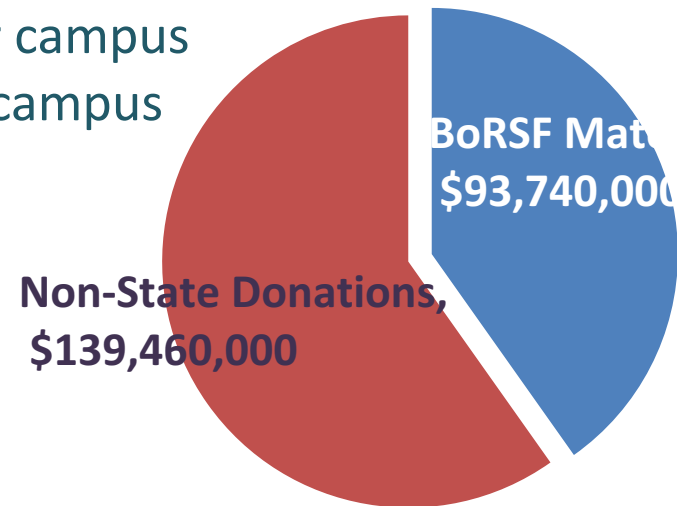
## *RECRUITMENT OF SUPERIOR GRADUATE STUDENTS*

- a. Traditional Graduate Fellows
- b. Graduate Fellowships for Teachers
- c. Board of Regents/Southern Regional Education Board Graduate Fellowships

# ENDOWED PROFESSORSHIPS PROGRAM, 1991-2012

## OVERVIEW

- Minimum Endowment Level: \$100,000
- Funding Ratio: 60% Non-State Donation/40% State Match
- Annual Matching Guarantees:
  - Two (2) \$40,000 matching slots per four-year campus
  - One (1) \$40,000 matching slot per two-year campus
- 2,380 \$100,000 slots funded at 39 campuses since 1990-91

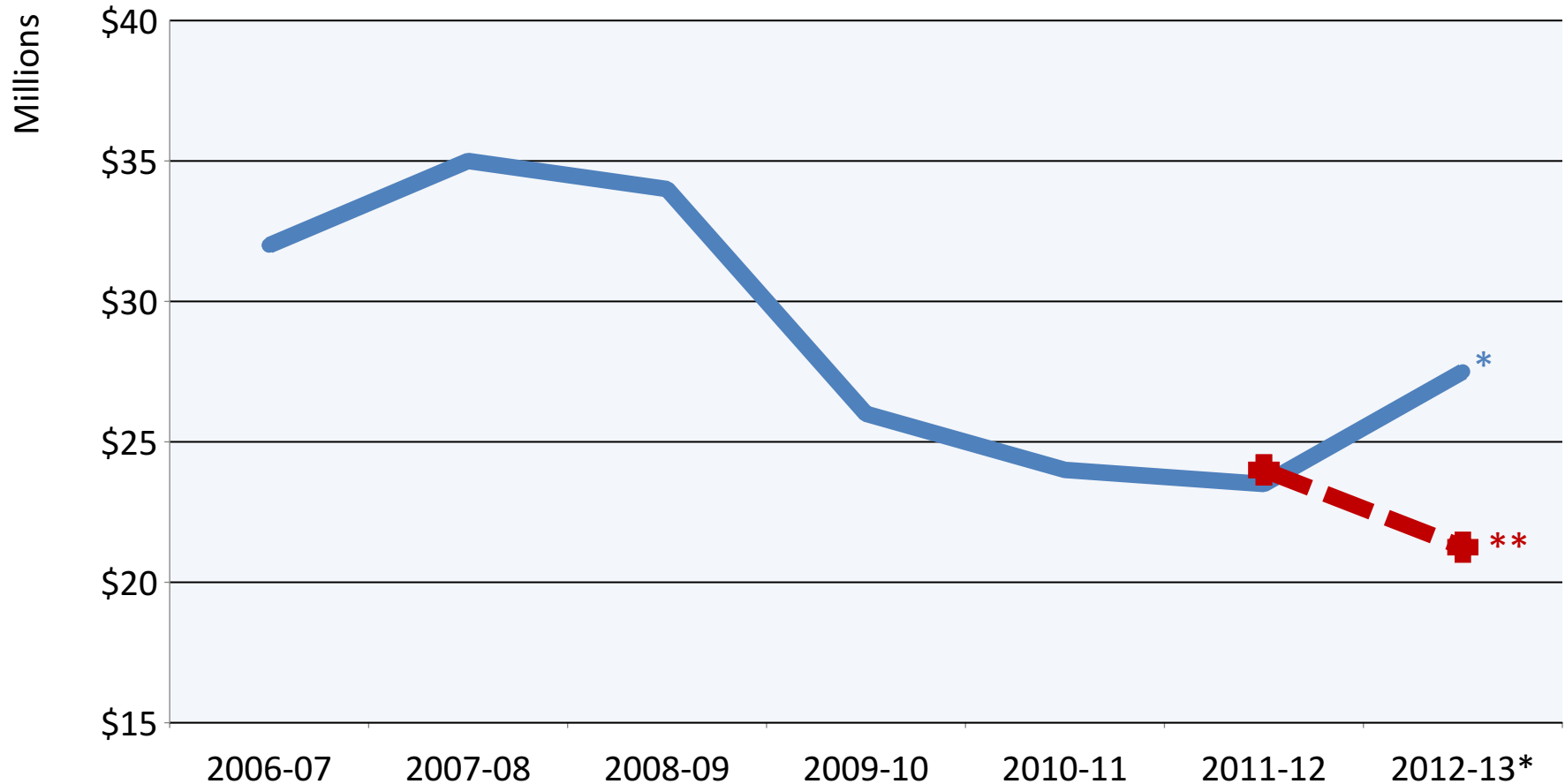


# CHALLENGING TRENDS

- Fewer State dollars are available to match private donations
  - ❖ Suspension of Legislative supplements
  - ❖ Decline in Support Fund budget
- Unmatched Professorships have grown to unprecedented proportions

# Recent Declines in BoRSF Income

## FY 2006-07 through FY 2012-13

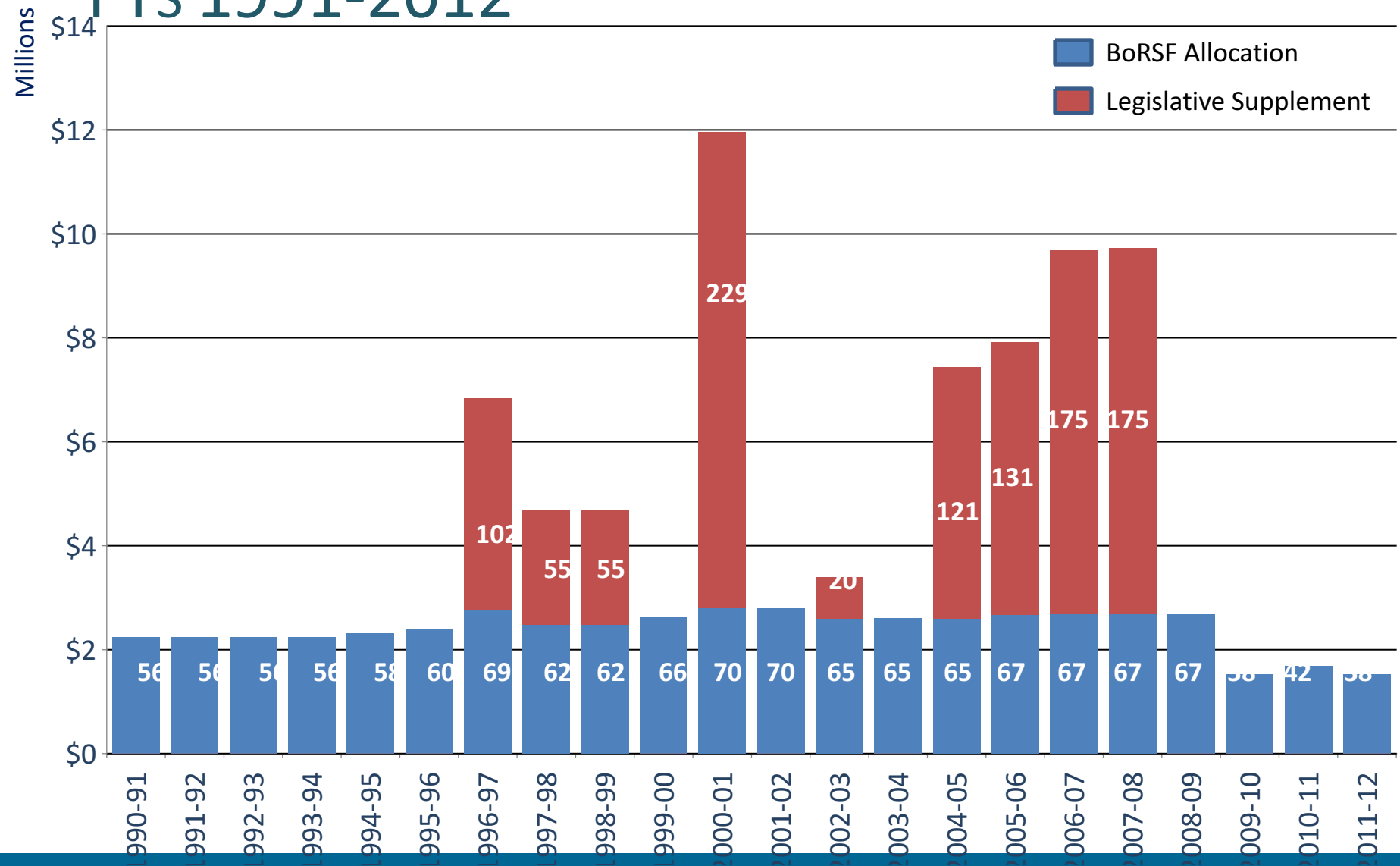


\* Revenue estimate used as basis of the FY 2012-13 BoRSF Plan and Budget

\*\* On July 24, 2012 the State Treasurer estimated revenue of \$21.25 million for FY 2012-13

# SUPPORT FUND AND LEGISLATIVE MATCHING

## FYs 1991-2012



# COMPARISON: SUPPORT FUND & LEGISLATIVE MATCHES

## FYs 1991-2012: \$40,000 SLOTS

➤ BoRSF Monies: 1,348 = \$54,380,000

➤ Legislature: 1,032 = \$41,280,000

**TOTAL: 2,380 = \$95,660,000**

# CHALLENGING TRENDS

- Fewer dollars are available to match private donations
  - ❖ Suspension of Legislative supplements
  - ❖ Decline in Support Fund budget
- Unmatched Professorships have grown to unprecedented proportions

## Unmatched Applications by Campus July 2, 2012

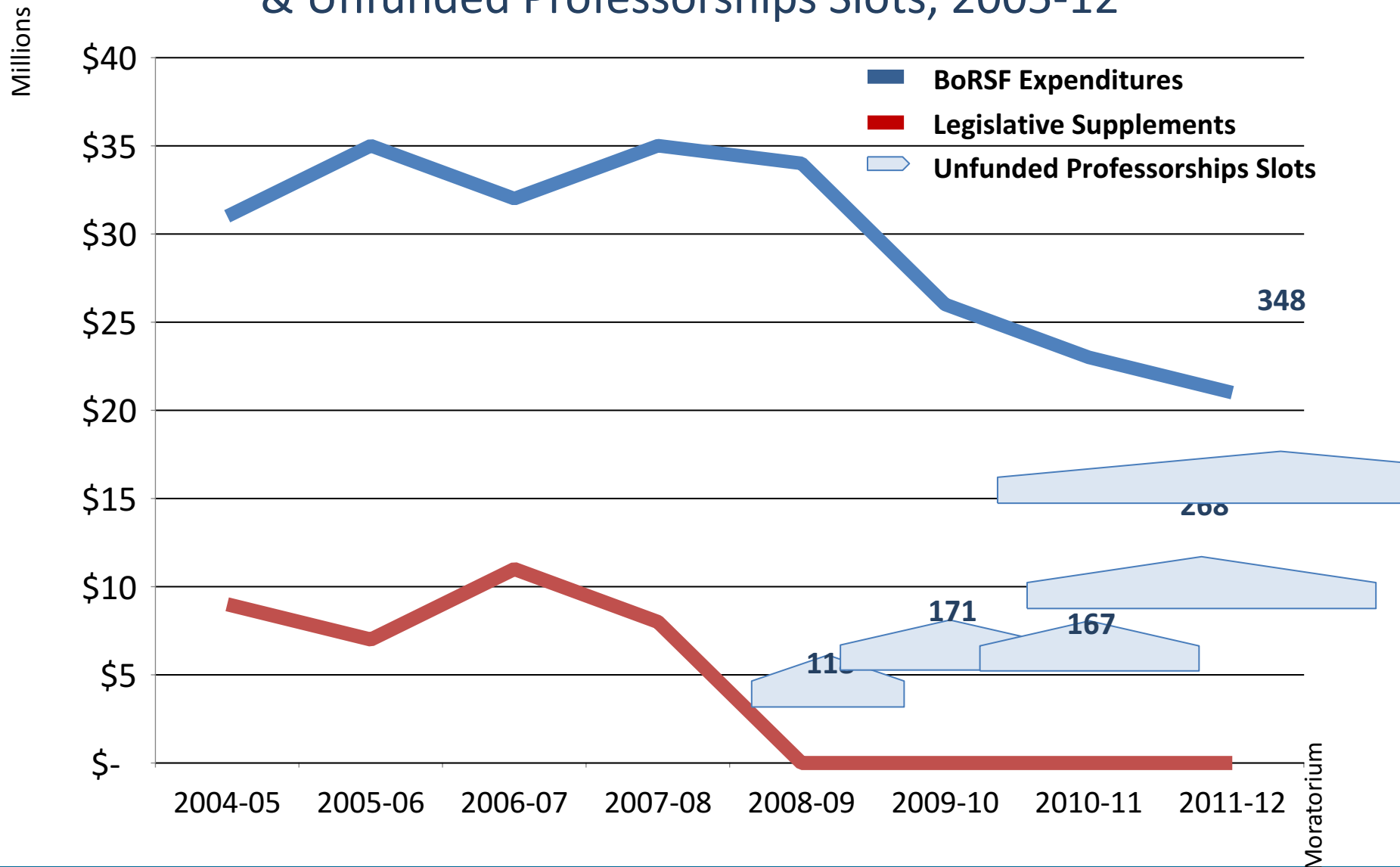
Campus	Slots Submitted for Match July 2, 2012	State Match Requested
LSU-BR	185	\$7,400,000
LSUHSCNO	31	\$1,240,000
Centenary	29	\$1,160,000
LSUS	26	\$1,040,000
Tulane	15	\$600,000
LSU Law	13	\$520,000
UL Lafayette	11	\$440,000
LSUHSCS	6	\$240,000
UL Monroe	5	\$200,000
Loyola	5	\$200,000
SUBR	4	\$160,000



## Unmatched Applications by Campus July 2, 2012 (ctd)

Campus	Slots Submitted for Match July 2, 2012	State Match Requested
Southeastern	3	\$120,000
St. Joseph	3	\$120,000
Dillard	2	\$80,000
McNeese	2	\$80,000
Northwestern	2	\$80,000
TUHSC	2	\$80,000
Xavier	2	\$80,000
SUNO	1	\$40,000
SU Shreveport	1	\$40,000
<b>TOTAL</b>	<b>348</b>	<b>\$13,920,000</b>

# Trends: BoRSF Funding, Legislative Supplements, & Unfunded Professorships Slots, 2005-12



# BOARD OF REGENTS SUPPORT FUND PLANNING COMMITTEE MEETING AUGUST 2, 2012

# ATTENDEES

## Planning Committee Members Present:

**Dr. Joseph Moerschbaecher**, Chair, LSU Health Sciences Center – New Orleans, representing the Louisiana State University System

**Dr. Diola Bagayoko**, Southern University at Baton Rouge, representing the Southern University System

**Dr. Carrie Castille**, Louisiana Department of Agriculture

**Dr. Bradd Clark**, University of Louisiana at Lafayette, representing the University of Louisiana System

**Dr. Gene D'Amour**, Xavier University of Louisiana, representing the Louisiana Association of Independent Colleges and Universities

**Dr. Kerry Davidson**, Louisiana Board of Regents

**Dr. Michael Gargano**, Louisiana State University System

**Ms. Mary Ginn**, Louisiana Department of Natural Resources

**Dr. Les Guice**, Louisiana Tech University, representing the University of Louisiana System

# ATTENDEES (ctd)

**Ms. Yvette Jones**, Tulane University, representing the Louisiana Association of Independent Colleges and Universities

**Dr. Michael Khonsari**, Louisiana Board of Regents

**Dr. Derrick Manns**, Louisiana Community and Technical College System

**Ms. Carrie Robison**, Louisiana Board of Regents

**Dr. Michael Stubblefield**, Southern University at Baton Rouge, representing the Southern University System

## Guests Present:

**Dr. Harold Stokes**, Member, Board of Regents

**Ms. MaryAnn Coleman**, Louisiana Association of Independent Colleges and Universities

**Ms. Gina Dugas**, LSU Foundation

**Mr. G. Lee Griffin**, LSU Foundation

**Dr. Carolyn Hargrave**, Louisiana State University System

**Mr. E. T. Hughes**, Southern University System Foundation

**Mr. Brad Jewell**, Pennington Biomedical Research Center Foundation

**Mr. Randy Legeai**, Tulane University

# OUTCOMES

SENIOR STAFF RECOMMENDATION I: THE BACKLOG

SENIOR STAFF RECOMMENDATION II: PHASE-IN OF  
COMPETITIVE ENDOWED PROFESSORSHIPS  
PROGRAM

FY 2012-13 THROUGH FY 2032-33

# OUTCOMES: I & II

- The Board of Regents commits to using Support Fund dollars during FY 2012-13 through 2032-33 for the purpose of completing the 348 unmatched Professorship applications (as of July 2, 2012).
- The Board of Regents hereby suspends the Endowed Professorships program during FY 2012-13 through FY 2017-18; no applications for new Professorships shall be accepted during this period.
- The entire Endowed Professorships budget, approximately \$1.6 million per year, shall be used to fund unmatched applications at the 20 affected campuses during FY 2012-13 through FY 2017-18.

# OUTCOMES: I & II (ctd)

- During FY 2018-19 through FY 2032-33, the Board of Regents commits to completing the remaining 147 unmatched Professorship applications at LSU-Baton Rouge. LSU-Baton Rouge shall be allocated \$400,000 annually from the Support Fund to match 10 Professorships per year.
- Beginning FY 2018-19, a competitive Endowed Professorships program shall be inaugurated at the level of \$1.2 million or above.



# SENIOR STAFF RECOMMENDATION I

## THE ENDOWED PROFESSORSHIPS BACKLOG

# THE BACKLOG: 348 PROFESSORSHIPS, 20 CAMPUSES FY 2012-13 THROUGH FY 2032-33

## Addressing Backlog for 20 Affected Campuses

2013	2014	2015	2016	2017
20 campuses	13 campuses	7 campuses	6 campuses	4 campuses
1-2 slots/campus (38 matches)	1-4 slots/campus (42 matches)	5-6 slots/campus (41 matches)	1-9 slots/campus (40 matches)	5-17 slots/campus (40 matches)
\$1,520,000 BoRSF	\$1,680,000 BoRSF	\$1,640,000 BoRSF	\$1,600,000 BoRSF	\$1,600,000 BoRSF
<b>310 at 13 campuses</b>	<b>268 at 7 campuses</b>	<b>227 at 6 campuses</b>	<b>187 at 4 campuses</b>	<b>147 at LSU</b>

## LSU Backlog: 147 Professorships

- 2018-2033
- \$400,000 annual set-aside
- 10 Professorships per year
- 15 years to complete matches

# ENDOWED PROFESSORSHIP MATCHES: 20 CAMPUSES

## FY 2013

Centenary (2)  
LSU-BR (2)  
LSUHSCS (2)  
LSUS (2)  
McNeese (2)  
St. Joseph (2)  
SUBR (2)  
SU Shreveport (1)  
TUHSC (2)  
UL Monroe (2)

Dillard (2)  
LSUHSCNO (2)  
LSU Law Center (2)  
Loyola (2)  
Northwestern (2)  
Southeastern (2)  
SUNO (1)  
Tulane (2)  
UL Lafayette (2)  
Xavier (2)

# THE BACKLOG: 310 PROFESSORSHIPS, 13 CAMPUSES FY 2013-14 THROUGH FY 2032-33

## Addressing Backlog for 13 Affected Campuses

2014	2015	2016	2017
13 campuses	7 campuses	6 campuses	4 campuses
1-4 slots/campus (42 matches)	5-6 slots/campus (41 matches)	1-9 slots/campus (40 matches)	5-17 slots/campus (40 matches)
\$1,680,000 BoRSF	\$1,640,000 BoRSF	\$1,600,000 BoRSF	\$1,600,000 BoRSF
<b>268 at 7 campuses</b>	<b>227 at 6 campuses</b>	<b>187 at 4 campuses</b>	<b>147 at LSU</b>

## LSU Backlog: 147 Professorships

- 2018-2033
- \$400,000 annual set-aside
- 10 Professorships per year
- 15 years to complete matches

# ENDOWED PROFESSORSHIPS MATCHES: 13 CAMPUSES

## FY 2014

Centenary (4)  
LSU-BR (4)  
LSUHSCNO (4)  
LSUHSCS (4)  
LSU Law Center (4)  
LSUS (4)  
Loyola (3)  
St. Joseph (1)  
Southeastern (1)  
SUBR (2)  
Tulane (4)  
UL Lafayette (4)  
UL Monroe (3)

# THE BACKLOG: 268 PROFESSORSHIPS, 7 CAMPUSES FY 2014-15 THROUGH FY 2032-33

## Addressing Backlog for 13 Affected Campuses

2015	2016	2017
7 campuses	6 campuses	4 campuses
5-6 slots/campus (41 matches)	1-9 slots/campus (40 matches)	5-17 slots/campus (40 matches)
\$1,640,000 BoRSF	\$1,600,000 BoRSF	\$1,600,000 BoRSF
<b>227 at 6 campuses</b>	<b>187 at 4 campuses</b>	<b>147 at LSU</b>

## LSU Backlog: 147 Professorships

- 2018-2033
- \$400,000 annual set-aside
- 10 Professorships per year
- 15 years to complete matches

# ENDOWED PROFESSORSHIPS MATCHES: 7 CAMPUSES FY 2015

Centenary (6)  
LSU-BR (6)  
LSUHSCNO (6)  
LSU Law Center (6)  
LSUS (6)  
Tulane (6)  
UL Lafayette (5)

# THE BACKLOG: 227 PROFESSORSHIPS, 6 CAMPUSES FY 2015-16 THROUGH FY 2032-33

## Addressing Backlog for 13 Affected Campuses

2016	2017
6 campuses	4 campuses
1-9 slots/campus (40 matches)	5-17 slots/campus (40 matches)
\$1,600,000 BoRSF	\$1,600,000 BoRSF
<b>187 at 4 campuses</b>	<b>147 at LSU</b>

## LSU Backlog: 147 Professorships

- 2018-2033
- \$400,000 annual set-aside
- 10 Professorships per year
- 15 years to complete matches



# ENDOWED PROFESSORSHIP MATCHES: 6 CAMPUSES

FY 2016

Centenary (9)

LSU-BR (9)

LSUHSCNO (9)

LSUS (9)

Tulane (3)

LSU Law Center (1)

# THE BACKLOG: 187 PROFESSORSHIPS, 4 CAMPUSES FY 2016-17 THROUGH FY 2032-33

## Addressing Backlog for 4 Affected Campuses

**2017**

4 campuses  
5-17 slots/campus  
(40 matches)  
\$1,600,000 BoRSF  
**147 at LSU**

## LSU Backlog: 147 Professorships

- 2018-2033
- \$400,000 annual set-aside
- 10 Professorships per year
- 15 years to complete matches

# ENDOWED PROFESSORSHIPS MATCHES: 4 CAMPUSES FY 2017

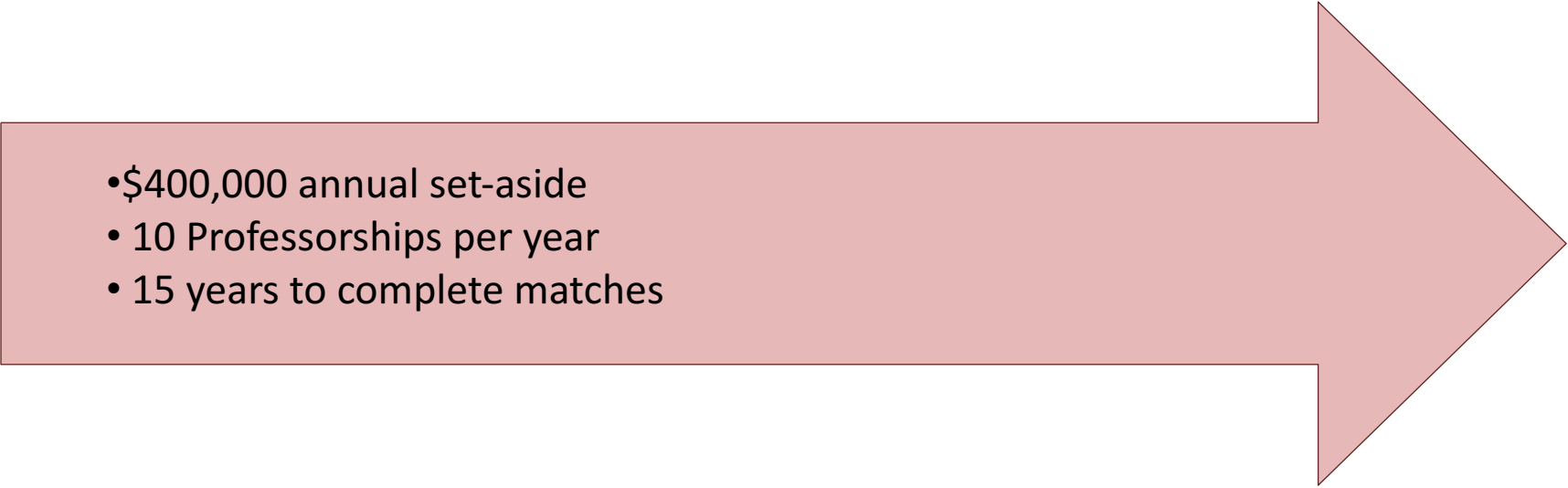
Centenary (8)

LSU-BR (17)

LSUHSCNO (10)

LSUS (5)

# LSU BACKLOG: 147 PROFESSORSHIPS FY 2017-18 THROUGH FY 2032-33

- 
- \$400,000 annual set-aside
  - 10 Professorships per year
  - 15 years to complete matches

# SENIOR STAFF RECOMMENDATION I

## THE BACKLOG: 348 PROFESSORSHIPS, 20 CAMPUSES

The Senior Staff recommends that the Board of Regents address the backlog of 348 Professorships at 20 campuses during FY 2012-13 through FY 2032-33. During FY 2012-13 through FY 2016-17, the amount devoted each year to addressing the backlog will be approximately \$1.6 million; the Board will progressively fill unmatched applications at all affected campuses, completing matches at all campuses except LSU-Baton Rouge.

The Board of Regents ensures that the remaining backlog at LSU-Baton Rouge – 147 slots – will be matched with Support Fund dollars during FY 2017-18 through FY 2032-33 by a set-aside of \$400,000 annually to complete ten (10) Professorships per year. LSU-Baton Rouge should continue to pursue Legislative supplements and the voluntary bundling of private dollars to accelerate the rate of match completion.

Beginning in FY 2017-18, the remaining \$1.2 million from the Endowed Professorships budget will be used to establish a competitive program. Dependent on future growth in the Support Fund budget, the Board will consider a substantial increase in the allocation for the competitive program.

# BoRSF PLANNING COMMITTEE VOTE

## THE BACKLOG PLAN

YEA (7)	Les Guice, UL System Bradd Clark, UL System Michael Gargano, LSU System Joseph Moerschbaecher, LSU System Diola Bagayoko, SU System Michael Khonsari, Board of Regents Kerry Davidson, Board of Regents
NAY (3)	Gene D'Amour, LAICU Yvette Jones, LAICU Michael Stubblefield, SU System
ABSTAIN (1)	Derrick Manns, LCTCS

# SENIOR STAFF RECOMMENDATION II

## PHASE-IN OF COMPETITIVE ENDOWED PROFESSORSHIPS PROGRAM

# PHASE-IN OF COMPETITIVE ENDOWED PROFESSORSHIPS PROGRAM

## Preparation: 2013-2017

**June 30, 2013**

System Position  
Papers Submitted

**Fall 2013**

Staff/Planning  
Committee  
Recommendations

**December 2013**

Board Consideration  
& Approval

**2014-17**

Solicitation of  
Initial Donors

**FY 2017-18**

Begin Competitive  
Program at \$1.2M+  
Funding Level

## Implementation: 2018 -

- 42 campuses eligible
- \$1.2 million+ per year



# SENIOR STAFF RECOMMENDATION II

## PHASE-IN OF COMPETITIVE ENDOWED PROFESSORSHIPS PROGRAM

The Senior Staff recommends that the Board invite each public and independent higher education system to submit a position paper outlining its recommendations for a competitive Endowed Professorships program, to be implemented during FY 2017-18. To be considered, position papers must be submitted to the Commissioner of Higher Education by June 30, 2013.

Sponsored Programs staff, in collaboration with the BoRSF Planning Committee, will review all position papers and bring recommendations to the Board by December 2013. Following Board approval of a competitive program, Sponsored Programs staff, with participation of eligible systems and campuses, shall develop appropriate program policies, requests for proposals, and scoring mechanisms for Board approval in FY 2014-15. All approved documents shall be released upon Board action, to provide campuses, systems and foundations with at least two years to solicit donor contributions and prepare submissions by the first cycle of program operation in FY 2017-18.

## AGENDA ITEM IV.

### FUNDING RECOMMENDATIONS FOR THE RESEARCH ENHANCEMENT AWARDS (REA) PROGRAM COMPONENT OF THE JOINTLY SPONSORED (REGENTS/NASA) LaSPACE PROGRAM

The Senior Staff recommends approval of the LaSPACE consultants' report and funding recommendations in the amount of \$254,126 relative to the six LaSPACE Research Enhancement Award (REA) projects recommended for funding, to be paid from Support Funds annually allocated to the LaSPACE Research Enhancement Awards program. Projects shall be funded in the amounts recommended in the consultants' report.

## AGENDA ITEM V.

### REQUEST FROM NICHOLLS STATE UNIVERSITY TO DIVIDE THE JOHN BRADY ENDOWED CHAIR IN COMPUTER SCIENCE

The Senior Staff recommends that the Board approve the division of the John A. Brady, Sr. Endowed Chair in Computer Science into two (2) endowed professorships as follows: (1) The John Brady and Pat Brady Endowed Professorship in Business at \$500,000; and (2) The John Brady, Sr. and John Brady, Jr. Endowed Professorship in Biological Sciences at \$500,000.

## AGENDA ITEM VI.

### APPROVAL OF NOMINATIONS OF NEW MEMBERS TO SERVE ON THE EPSCoR, BoRSF PLANNING, AND MASTER PLAN RESEARCH ADVISORY COMMITTEES

The Senior Staff recommends that the Board approve nominations regarding the EPSCoR, BoRSF Planning, and Master Plan Research Advisory Committees as presented.

# PLANNING, RESEARCH AND PERFORMANCE COMMITTEE



**Larry Tremblay**

*Joe Wiley, Chair*

*Chris Gorman, Vice Chair*

*Maurice Durbin*

*Joe Farr*

*William Fenstermaker*

*Matthew L. Jewell*

*Roy O. Martin III*

*Harold Stokes*

# Agenda Item III.

## Consent Agenda –

### A. R.S. 17:1808 (Licensure)

1. Initial License
  - a. Louisiana Culinary Institute Center for Culinary Management
  - b. Minot State University
  - c. University of West Florida
2. License Renewals
  - a. Ottawa University

# Agenda Item III.

## **Consent Agenda –**

### B. Proprietary Schools

1. AOS Degree Application
  - a. Blue Cliff College (Alexandria)

# Agenda Item III.

## Consent Agenda –

### B. Proprietary Schools

#### 2. License Renewals

- a. Advance Healthcare Institute, LLC (05/26/11)
- b. Blue Cliff College – Alexandria (05/25/06)
- c. Cameron College (06/29/83)
- d. Central Louisiana Medical Academy (06/24/99)
- e. Cyber Academy (05/25/00)
- f. Delta College of Arts & Technology (06/25/92)
- g. Dental Careers Institute, LLC (05/26/11)
- h. Diesel Driving Academy (Baton Rouge ) (06/25/87)
- i. Eastern College of Health Vocations – Shreveport (05/27/04)
- j. God's Way – Project Excel, Inc. (05/26/11)
- k. Louisiana Institute of Massage Therapy (06/25/92)



# Agenda Item III.

## Consent Agenda –

### B. Proprietary Schools, *cont'd*

#### 2. License Renewals, *cont'd*

- l. Nashville Auto-Diesel College (05/22/03)
- m. New Horizons Computer Learning Center – New Orleans (05/25/00)
- n. Oak Park School of Dental Assisting (05/28/09)
- o. Ouachita Truck Driving Academy, LLC (05/22/03)
- p. Promise Pride Career College (05/26/11)
- q. Remington College – Baton Rouge Campus (05/26/11)
- r. Remington College – Lafayette Campus (05/26/11)
- s. Remington College – Shreveport Campus (05/26/11)
- t. Southern Medical Corporation School of Ultrasound (06/26/97)
- u. Virginia College (05/27/10)
- v. Virginia College (Shreveport) (05/26/11)

# RECOMMENDATION

Senior Staff recommends that the Planning, Research and Performance Committee approve the items under the Consent Agenda.



# AGENDA ITEM IV.

## **R.S. 17:1808 (Licensure)**

### A. Revisions to Rules and Regulations

# AGENDA ITEM IV.

## **R.S. 17:1808 (Licensure)**

### Annual Fees

- 1975 – 1991                      Free
- 1991 – 1997                      \$500
- 1997 – 2012                      \$750

# RECOMMENDATION

The Planning, Research and Performance Committee recommends that the Board authorize the staff to initiate the process as outlined in the Administrative Procedures Act (APA) to increase the annual license fee from seven hundred and fifty dollars (\$750.00) to one thousand five hundred dollars (\$1,500.00) as authorized in Act 278 of 2012.



# AGENDA ITEM IV.

## **R.S. 17:1808 (Licensure)**

- B. Southwest Kingston University (New Louisiana Institution)

# AGENDA ITEM IV.

## **R.S. 17:1808 (Licensure)**

### TIMELINE OF EVENTS

- Oct 2010 – Southwest Kingston University (SKU) submits license application
- Oct 2010 – Feb 2011 – Staff assessment and review
- Mar 2011 – SKU resubmission
- Mar 2011 – May 2011 – SKU application review by consultant
- Jun 2011 – Apr 2012 – SKU response to consultant report
- May 2012 – July 2012 – SKU finalizes application

# RECOMMENDATION

Senior Staff recommends that:

1. The Board of Regents hereby grants initial licensure for Southwest Kingston University for a period of three years.
2. Annually, beginning August 1 of the first year of institutional operations and on that date every year thereafter during the term of initial licensure, the University shall report to the Deputy Commissioner for Planning, Research and Academic Affairs the status of its progress toward preparation and submittal of an application for accreditation candidacy through Distance Education and Training Council (DETC).



# RECOMMENDATION

This report shall at a minimum evidence attendance and participation of appropriate University officials at periodic DETC workshops for pre-applicant institutions and general membership meetings.

3. At the end of this period of initial licensure, the University shall provide evidence of submittal of an application for DETC candidacy. If accomplished, the Regents will consider another eighteen months of licensure. If not accomplished, the Regents will consider denial of further licensure.

# RECOMMENDATION

4. Within one year of submittal of an application for DETC candidacy, the University shall provide evidence of successful DETC candidacy status. If granted, the Regents will consider extending licensure to allow for final, full accreditation review. If not accomplished, the Regents will consider denial of further licensure.
5. Upon termination of the allotted time for final accreditation review, the University shall report its DETC membership status. If DETC accreditation has been granted, the Regents shall consider issuing a regular 2-year operating license. If not granted, the Regents will consider denial of further licensure.

# AGENDA ITEM V.

## **TOPS Equivalency Course Requests**

# AGENDA ITEM V.

## **TOPS Equivalency Course Requests**

- Louisiana Student Financial Assistance Commission (LASFAC) authorized to establish course substitutes for TOPS
- Louisiana School for Math, Science and the Arts (LSMSA) is Louisiana's preeminent residential high school
- LSMSA faculty qualified college instructors
- All LSMSA graduates TOPS qualified
- Many LSMSA courses part of articulation agreements with universities
- LSMSA added sophomore class
- BESE recommended approval of courses for TOPS
- Universities recommended approval of courses for TOPS.

# RECOMMENDATION

Senior Staff recommends that the Planning, Research and Performance Committee support the request for the addition of the listed LSMSA courses as substitutes for TOPS courses.



# AGENDA ITEM VI.

## **Annual Assessment of Master Plan for Public Postsecondary Education in Louisiana: 2011**

# AGENDA ITEM VI.

## **Annual Assessment of Master Plan for Public Postsecondary Education in Louisiana: 2011**

- Goal 1: Increase the Educational Attainment of the State's Adult Population to the SREB State's Average (42%) by 2025
- Goal 2: Foster Innovation Through Research in Science and Technology in Louisiana
- Goal 3: Achieve Greater Accountability, Efficiency and Effectiveness in the Postsecondary Education System

# AGENDA ITEM VI.

## **Annual Assessment of Master Plan for Public Postsecondary Education in Louisiana: 2011**

- **Goal 1: 54 Quantitative Measures**
  - 39 showed improvement
  - 14 experienced decline
  - 1 remained the same
- **Goal 2: 28 Quantitative Measures:**
  - 15 showed improvement
  - 11 experienced decline
  - 2 remained the same
- **Goal 3: 15 Quantitative Measures**
  - 12 showed improvement
  - 3 experienced decline
  - 0 remained the same
- **TOTALS**
  - 66 showed improvement
  - 28 experienced decline
  - 3 remained the same



# RECOMMENDATION

Senior Staff recommends that the Planning, Research and Performance Committee receive the Annual Assessment of Master Plan for Public Postsecondary Education in Louisiana: 2011.



# AGENDA ITEM VII.

## **Other Business**

# LOUISIANA BOARD OF REGENTS



**August 22, 2012**

# PUBLIC COMMENTS



# APPROVAL OF MINUTES

JUNE 27, 2012



# INTRODUCTIONS

## UNIVERSITY OF LOUISIANA SYSTEM

Dr. Randy Moffett

Dr. Gary Reichart, Interim Provost & Vice  
President for Academic and Student Affairs

## LOUISIANA STATE UNIVERSITY SYSTEM

Dr. William Jenkins

Dr. Stuart Bell, Executive Vice Chancellor  
and Provost



# REPORTS AND RECOMMENDATIONS BY THE COMMISSIONER OF HIGHER EDUCATION



# EXECUTIVE COMMITTEE (JULY 13, 2012)



Robert W. Levy, *Chair*

Charlotte A. Bollinger, *Vice Chair*

Joseph C. Wiley, *Secretary*

Joseph Farr

Donna G. Klein

W. Clinton Rasberry, Jr.

Harold M. Stokes

**KIM HUNTER REED**



# MOTION

The Executive Committee recommends that the Board of Regents assign a designation of Green for Southern University Shreveport, thereby allowing the institution to implement the tuition authority and pursue the operational autonomies outlined in the GRAD Act legislation. Any appeal by SUSLA of the earlier designation by Staff is thus rendered moot and is no longer pending.

# ACADEMIC AND STUDENT AFFAIRS

## COMMITTEE



**KAREN DENBY**  
**JEANNINE KAHN**

**Charlotte Bollinger, *Chair***

**Harold Stokes, *Vice Chair***

**Maurice Durbin**

**Chris Gorman**

**Matthew Jewell**

**Albert Sam II**

**Joseph Wiley**

**Representatives from Management Boards**

# MOTION

The Academic and Student Affairs Committee recommends that the Board grant *approval* of the Letter of Intent to develop a proposal for a Bachelor of Fine Arts in Digital Media at Louisiana State University at Shreveport. The proposal should address those issues raised in the staff analysis.

# MOTION

The Academic and Student Affairs Committee recommends that the Board grant the following:

► *Conditional approval of the following programs, with progress reports due by 1 October, 2013:*

- AAS in Polysomnographic Technology at DCC;
- AAS in Automotive Technology at NTCC;
- Associate of General Studies and Certificate of General Studies at NTCC;
- BS in Medical Laboratory Science at LSUA;
- Bachelor of Interdisciplinary Studies at SU A&M;
- MS in Criminal Justice **and** the MS in Kinesiology at ULL

► *Approval of the PBC in Accounting and the PBC in Occupational Health, Safety & Toxicology at ULM*

# MOTION

The Academic and Student Affairs Committee recommends that the Board grant the following:

- ▶ *Approval* to GSU to change the Master of Arts in Teaching Social Sciences to a Master of Arts in Social Sciences;
- ▶ *Approval* to UNO to change the PhD in Conservation Biology to a PhD in Integrative Biology; and
- ▶ *Approval* of the PMC in Family Nurse Practitioner with authorization for immediate implementation, and the PMC in Family Psychiatric/Mental Health Nurse Practitioner with implementation for Fall 2013, at Nicholls to be offered through the Intercollegiate Consortium for the Master of Science in Nursing (ICMSN). Progress reports are due by September 1, 2013.

# MOTION

The Academic and Student Affairs Committee recommends that the Board receive and approve the items on the Consent Agenda.

- A. LSU A&M – Request for Reauthorization: Stephenson Disaster Management Institute
- B. LSU Law Center – Request for One-Year Conditional Approval: Energy Law Center
- C. Routine Staff Reports
  - 1. Staff Approval of Routine Academic Requests
  - 2. Progress Reports for Conditionally Approved Programs/Units
  - 3. Past Due Reports for Programs/Units
  - 4. Letters of Intent/Proposals in Queue

# FACILITIES AND PROPERTY COMMITTEE



Robert Bruno, *Chair*

W. Clinton Rasberry, Jr., *Vice Chair*

Charlotte Bollinger

Joseph Farr

Chris Gorman

Matthew Jewell

Roy Martin III

Joseph Wiley

Representatives from Management Boards

**BARBARA GOODSON**

# MOTION

The Facilities and Property Committee recommends that the Board approve the Small Capital Projects Report as presented.

Institution	Project Description	Cost
NSU	Replacement of synthetic turf system	\$290,421
LA Tech	Extension of walkway	\$250,000
LSU Vet	Renovation of Exam Room in small animal clinic	\$475,000
LSU Ag Center	Renovation of laboratories in H.D. Wilson	\$250,000
LSU Ag Center	Renovation of labs - Dean Lee and Weed Science	\$400,000
LSU Ag Center	Burden Center renovations	\$325,000
LSU Ag Center	Pilot processing plant	\$451,000
LSU Ag Center	Land acquisition at Lee Memorial Forest	\$400,000
LSU	Renovation to O.K. Allen Hall	\$177,845
LSU	Renovation to Athletic Administration Building	\$250,000



# MOTION

The Facilities and Property Committee recommends the Board approve the request for Northwestern State University to petition the Interim Emergency Board to replace and waterproof the roof, and repair the masonry walls on the Nursing Education building located in Shreveport, Louisiana.

# PERSONNEL COMMITTEE



Maurice Durbin, *Chair*

Donna Klein, *Vice Chair*

**KIM HUNTER REED**

Robert Bruno

Albert Sam

Harold Stokes

# MOTION

The Personnel Committee recommends that the Board approve the internal transfer of LA GEAR UP and the appropriate TO from the Board of Regents to LOSFA.

# TECHNOLOGY COMMITTEE



**TODD BARRÉ**

**Chris Gorman, *Chair***

**Robert Bruno, *Vice Chair***

**Joseph Farr**

**William Fenstermaker**

**Matthew Jewell**

**Albert Sam**

# MOTION

The Technology Committee recommends that the Board approve the recommendations from the LONI Management Council for Internet Usage and Charges.

# SPONSORED PROGRAMS COMMITTEE



**KERRY DAVIDSON**  
**CARRIE ROBISON**  
**JIM GERSHEY**

**Harold Stokes, *Chair***  
**Joseph Farr, *Vice Chair***  
**William Fenstermaker**  
**Chris Gorman**  
**Matthew Jewell**  
**Donna Klein**  
**Albert Sam**

# MOTION

The Sponsored Programs Committee recommends that the Board of Regents address the backlog of 348 Professorships at 20 campuses during FY 2012-13 through FY 2032-33. During FY 2012-13 through FY 2016-17, the amount devoted each year to addressing the backlog will be approximately \$1.6 million; the Board will progressively fill unmatched applications at all affected campuses, completing matches at all campuses except LSU-Baton Rouge.

The Board of Regents ensures that the remaining backlog at LSU-Baton Rouge – 147 slots – will be matched with Support Fund dollars during FY 2017-18 through FY 2032-33 by a set-aside of \$400,000 annually to complete ten (10) Professorships per year. LSU-Baton Rouge should continue to pursue Legislative supplements and the voluntary bundling of private dollars to accelerate the rate of match completion.

Beginning in FY 2017-18, the remaining \$1.2 million from the Endowed Professorships budget will be used to establish a competitive program. Dependent on future growth in the Support Fund budget, the Board will consider a substantial increase in the allocation for the competitive program.



# MOTION

The Sponsored Programs Committee recommends that the Board invite each public and independent higher education system to submit a position paper outlining its recommendations for a competitive Endowed Professorships program, to be implemented during FY 2017-18. To be considered, position papers must be submitted to the Commissioner of Higher Education by June 30, 2013.

Sponsored Programs staff, in collaboration with the BoRSF Planning Committee, will review all position papers and bring recommendations to the Board by December 2013. Following Board approval of a competitive program, Sponsored Programs staff, with participation of eligible systems and campuses, shall develop appropriate program policies, requests for proposals, and scoring mechanisms for Board approval in FY 2014-15. All approved documents shall be released upon Board action, to provide campuses, systems and foundations with at least two years to solicit donor contributions and prepare submissions by the first cycle of program operation in FY 2017-18.



# MOTION

The Sponsored Programs Committee recommends the Board approve the LaSPACE consultants' report and funding recommendations in the amount of \$254,126 relative to the six LaSPACE Research Enhancement Award (REA) projects recommended for funding, to be paid from Support Funds annually allocated to the LaSPACE Research Enhancement Awards program. Projects shall be funded in the amounts recommended in the consultants' report.

# MOTION

The Sponsored Programs Committee recommends that the Board approve the division of the John A. Brady, Sr. Endowed Chair in Computer Science into two (2) endowed professorships as follows: (1) The John Brady and Pat Brady Endowed Professorship in Business at \$500,000; and (2) The John Brady, Sr. and John Brady, Jr. Endowed Professorship in Biological Sciences at \$500,000.

# MOTION

The Sponsored Programs Committee recommends that the Board approve nominations regarding the EPSCoR, BoRSF Planning, and Master Plan Research Advisory Committees as presented.

# PLANNING, RESEARCH AND PERFORMANCE COMMITTEE



**Larry Tremblay**

**Joseph Wiley, *Chair***

**Chris Gorman, *Vice Chair***

**Maurice Durbin**

**Joseph Farr**

**William Fenstermaker**

**Matthew L. Jewell**

**Roy O. Martin III**

**Harold Stokes**

# MOTION

The Planning, Research and Performance Committee recommends that the Board approve the items under the Consent Agenda.



# MOTION

The Planning, Research and Performance Committee recommends that the Board authorize the staff to initiate the process as outlined in the Administrative Procedures Act (APA) to increase the annual license fee from seven hundred and fifty dollars (\$750.00) to one thousand five hundred dollars (\$1,500.00) as authorized in Act 278 of 2012.

# MOTION

The Planning, Research and Performance Committee recommends that:

1. The Board of Regents hereby grants initial licensure for Southwest Kingston University for a period of three years.
2. Annually, beginning August 1 of the first year of institutional operations and on that date every year thereafter during the term of initial licensure, the University shall report to the Deputy Commissioner for Planning, Research and Academic Affairs the status of its progress toward preparation and submittal of an application for accreditation candidacy through DETC.

# MOTION (CONTINUED)

3. This report shall at a minimum evidence attendance and participation of appropriate University officials at periodic DETC workshops for pre-applicant institutions and general membership meetings.
4. At the end of this period of initial licensure, the University shall provide evidence of submittal of an application for DETC candidacy. If accomplished, the Regents will consider another eighteen months of licensure. If not accomplished, the Regents will consider denial of further licensure.



# MOTION (CONTINUED)

5. Within one year of submittal of an application for DETC candidacy, the University shall provide evidence of successful DETC candidacy status. If granted, the Regents will consider extending licensure to allow for final, full accreditation review. If not accomplished, the Regents will consider denial of further licensure.
6. Upon termination of the allotted time for final accreditation review, the University shall report its DETC membership status. If DETC accreditation has been granted, the Regents shall consider issuing a regular 2-year operating license. If not granted, the Regents will consider denial of further licensure.

# MOTION

The Planning, Research and Performance Committee recommends that the Board support the request for the addition of the listed LSMSA courses as substitutes for TOPS courses.

# AGENDA ITEM

## OTHER BUSINESS

### Remarks by Chairman Robert Levy

- Fred Reed – Southern University Nursing Student

# AGENDA ITEM

## OTHER BUSINESS

### Remarks by Chairman Robert Levy

- Todd Barré - Presentation

# ADJOURNMENT

