

AP Drawing & Painting

Summer Assignment

About AP: Drawing /Art

Hello artists! I'm Ms. Angie Campos. I'll be your instructor next year. AP Studio Art is a rigorous COLLEGE level course that requires you to create an original portfolio made up of 24 quality art works.

In order to achieve a successful and complete portfolio, you must start working NOW!

I look forward to seeing you in August. If you have any questions, please email me at:

mcamposguerrero@[tustin.k12.ca.us](mailto:mcamposguerrero@tustin.k12.ca.us)

Requirements:

Pick THREE (4) assignments from the following list to complete over the summer. The size of the artworks is not as important as the **QUALITY** of the artworks.

***One can be small in size (9" x 12", 12" x 16"), and the second & third artworks could be medium to large in size (16" x 20", 18" x 24"). Please adhere to these sizes.

Your three artworks must be brought to class on the first day of school in August. These artworks will count as your first three grades. Therefore, take it seriously! Please do not wait until the last few days before school starts to work on these, it will show in the final work, and that will reflect in your grade. These artworks should be executed with skill and demonstrate excellent craftsmanship. Email me if you need materials.

Each artwork should contain the 3 "C"s": **COMPOSITION, CONTRAST, & CONTENT.**

Assignments

Assignment 1: Reflective Surfaces

DEPICT OBJECTS THAT HAVE **REFLECTIVE SURFACES**.
CREATE A STRONG COMPOSITION UTILIZING
INTERESTING IMAGES. REPRESENT A VARIETY OF
INTERESTING AND CREATIVE SURFACES.

Create a drawing that utilizes strong contrast.
Use media of choice. All objects should be
directly from **observation**, not a photograph.

Ideas...MIRRORS, TOASTERS, SPOONS, GLASSES,
CARS, SHINY METAL OBJECTS, REFLECTIONS IN
WATER, ETC.

BE CREATIVE WITH YOUR SURFACES AND THE
REFLECTIONS THAT ARE CREATED.

Use 80% of the paper and make sure to have at
least 5 values.



Willie Thier

Assignment 2: Figure Drawing

Draw a person's head and face using **exaggeration to communicate emotion.**

First use a pencil to make a general drawing.

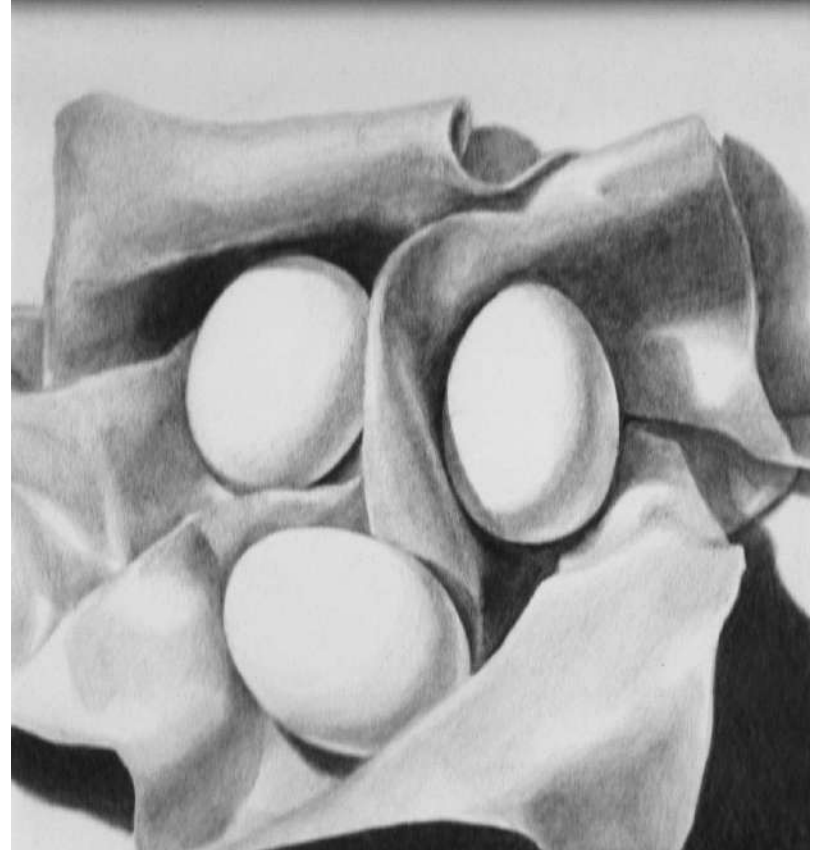
Note the shapes and planes of the face and how they fit together. Then continue over the drawing with a darker media. Utilize strong contrast to greatly exaggerate the areas you want to emphasize. Work from a live model, not a photograph.

Use yourself, looking in the mirror, if you don't have a friend you can use.



Assignment 3: Three Eggs

Place three eggs on a towel or cloth, to create an interesting composition and draw it in pencil. Pay attention to the smoothness of the eggs against the rough quality of the material. Concentrate on the forms of the eggs and use strong values. **Use graphite.**



Assignment 4: Tool Composition

— — —
Do a detailed drawing of a mechanical object or tool in pencil or colored pencil. Some ideas include bicycle, hammer, screwdriver, scissors, saw, etc. Crop it down using a viewfinder so that part of it will go off the paper. Use graphite or colored pencil, or both together.



Assignment 5: Landscape

Create an artwork that depicts a landscape in the style of Impressionism. Look at the following artists for inspiration: Monet, Manet, Cassat, Degas, Renoir, and Cezanne.

Working from direct observation is best... if you do work from a photograph, use your own photo, not a published photo. Use the art medium of your choice.



Assignment 5: Shoes

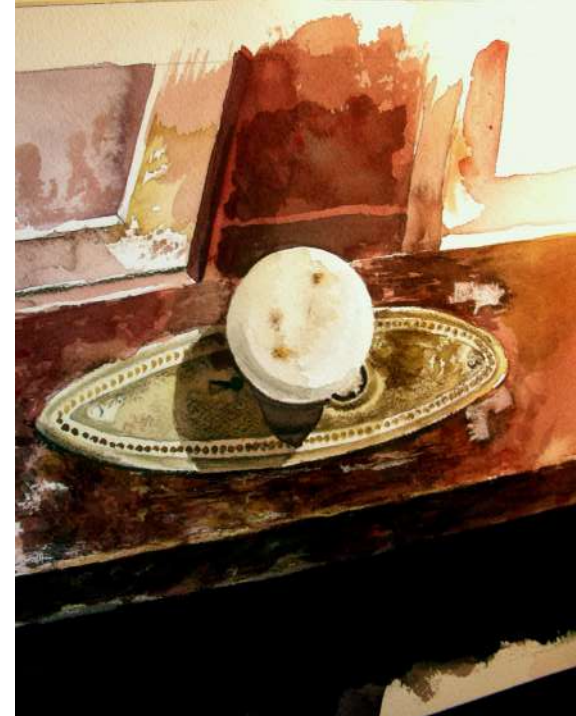
Find an old pair of shoes yours or someone in your family. Draw them in an interesting composition... try to arrange them uniquely. Don't be afraid to step outside the box and try something different. Use two or more art media of your choice.



Assignment 6: Doorway

Create an interesting composition that uses a doorway as your subject. Consider showing both interior and exterior space. Draw or paint your composition.

— — —



Research: About AP

Please visit the AP Central website for more information:

http://apcentral.collegeboard.com/apc/public/exam/exam_information/index.html

IMPORTANT: 

The AP Studio Art Exam consists of two components:

24 Digital images and commentary uploaded by students and submitted to AP by the AP Coordinator, via the AP Studio Art Digital Submission Web application

5 Physical portfolios: the Quality section (only 5 of the 24 actual artworks) for Drawing and 2-D Design portfolios, assembled and mailed to the AP Program.

Visit the link below to view past portfolio examples:

http://apcentral.collegeboard.com/apc/members/exam/exam_information/220194.html

Begin NOW!

EXPECTATIONS ARE HIGH,
AS YOU CAN SEE FROM THE
VARIOUS EXAMPLES SHOWN
ABOVE, SO WORK HARD.

Please contact me if you
need materials or ANY help.

IMPORTANT NOTE: You must
have all assignment
complete before the first
day of school.

mcamposguerrero@tustin.k12.ca.us

See you soon! MS. CAMPOS