

# **Anatomy and Physiology Chapter 4 and 5 (Epithelial Tissue and Skin)**

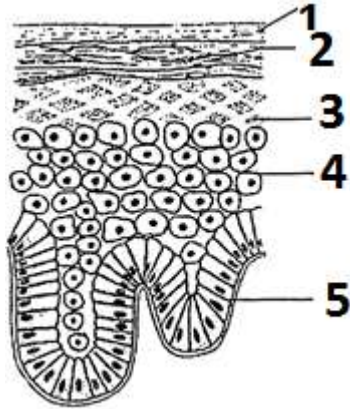
## **Exam Study Guide**

*Use this guide to direct your attention toward the information to be covered by the test.*

1. Name three vital functions of the skin.
2. Which protein is responsible for making the skin tough?
3. What is the outer layer of skin called?
4. Which part of the skin has no blood supply of its own?
5. Which type of tissue composes the hypodermis?
6. What causes the tanning of skin when exposed to UV radiation?
7. What is the function of melanin production in the skin? Be specific.
8. In which layer of the epidermis are melanocytes located?
9. Which part of the skin contains sweat and oil glands?
10. How do nutrients reach the epidermis?
11. What is responsible for creating the pattern of fingerprints?
12. What is the first threat to life from a severe third degree burn?
13. How many main layers of skin are there? What are they called?
14. Which structure is responsible for pulling hair upwards and the goose bumps?
15. What are the two layers of the dermis, and which is on the bottom?
16. Which type of burn involves injury to the epidermis and dermis, and usually results in blistering?
17. What does the ABCD rule stand for, and how is it used?
18. In which type of epithelial tissue are goblet cells found?
19. Of the four main categories of tissues, which does not have a direct blood supply?
20. What are the four types of tissues and short function?
21. Which type of epithelial tissue composes the skin?
22. What are glands that secrete into blood/tissues called?
23. What are glands that secrete onto a surface called?
24. How do you signify how many layers are in an epithelial tissue?
25. What are the three main shapes of epithelial tissue?
26. What are the functions of epithelial tissue?
27. What is the cutaneous membrane?
28. What type of tissue is the epidermis?
29. What type of tissue is the dermis?
30. What is the function of the epidermis?
31. What is the function of the dermis?
32. Where on your body is thick skin located and what extra layer does it have?
33. What are the layers of epidermis in thin skin?
34. What are the layers of epidermis in thick skin?
35. What are the different types of glands found in epithelial tissue?
36. What are the different glands found in skin? What type of gland are they?
37. What are the functions of the integumentary system?
38. What is the apical surface on epithelial tissue?
39. What is the basement membrane?
40. What is the basal surface on epithelial tissue?

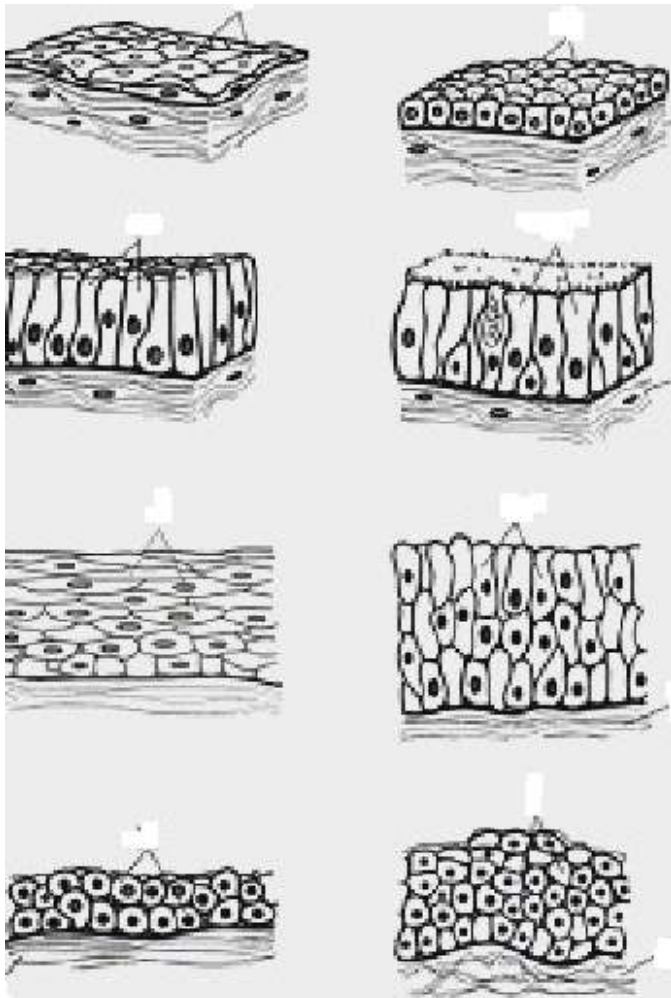
41. In the diagram below label the layers of the epidermis.

- a. Is this thick or thin skin?
- b. Which numbers represent thin skin?
- c. Which numbers represent thick skin?



42. In the diagram below:

- a. Name each epithelial tissue
- b. Label the apical surface
- c. Label the basal surface
- d. Label the basement membrane



43. BE ABLE TO LABEL ALL STRUCTURES OF THE SKIN.

44. BE ABLE TO IDENTIFY FUNCTION AND LOCATION OF EPITHELIAL TISSUE STARRED IN LECTURE