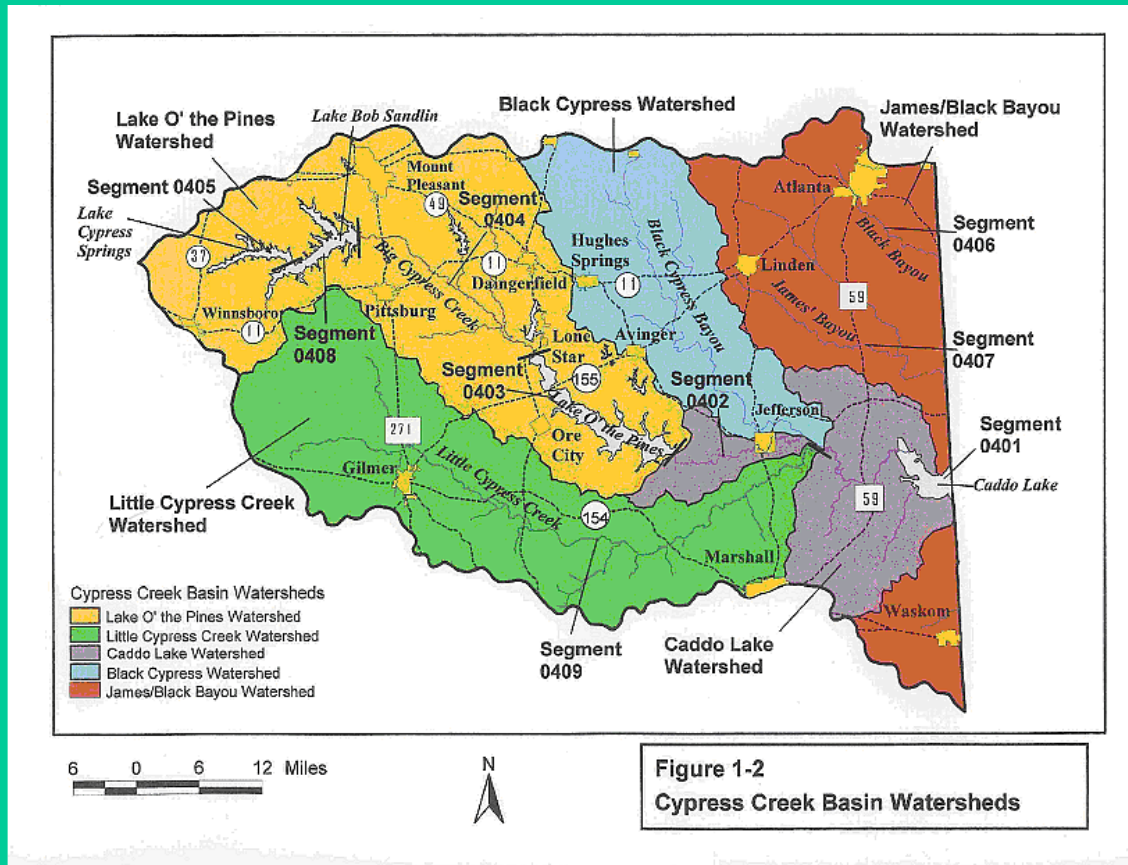


Giant Salvinia & the Big Cypress Watershed



**Figure 1-2
Cypress Creek Basin Watersheds**

By Jack Canson August 2006

***Salvinia molesta* is a free-floating aquatic fern originating in Brazil. It has irregularly branched stems and no roots. Its leaves are actually fronds, in whorls of three; two floating and one submerged, with stiff, tiny water resistant hairs above and wettable hairs beneath.**



In the colonizing stage, free floating plants multiply rapidly in warm, nutrient-rich, still water – such as most parts of Caddo Lake.



Intermediate stage: plants spread over the water until entire surface is covered. SALVINIA POPULATIONS CAN DOUBLE IN 4 TO 8 DAYS.



Mat forming stage: salvinia forms thick blankets of plants that shut off all sunlight and destroy plant and animal habitat.



Salvinia molesta
Splendora, TX
Photo: R. Helton, TPWD
June 2001

**Salvinia reproduces itself primarily by fragmentation.
Plants break easily into pieces that generate new plants.**

Salvinia is
resistant to
cold and
drought.



**1st reported around
June 1, 2006.**

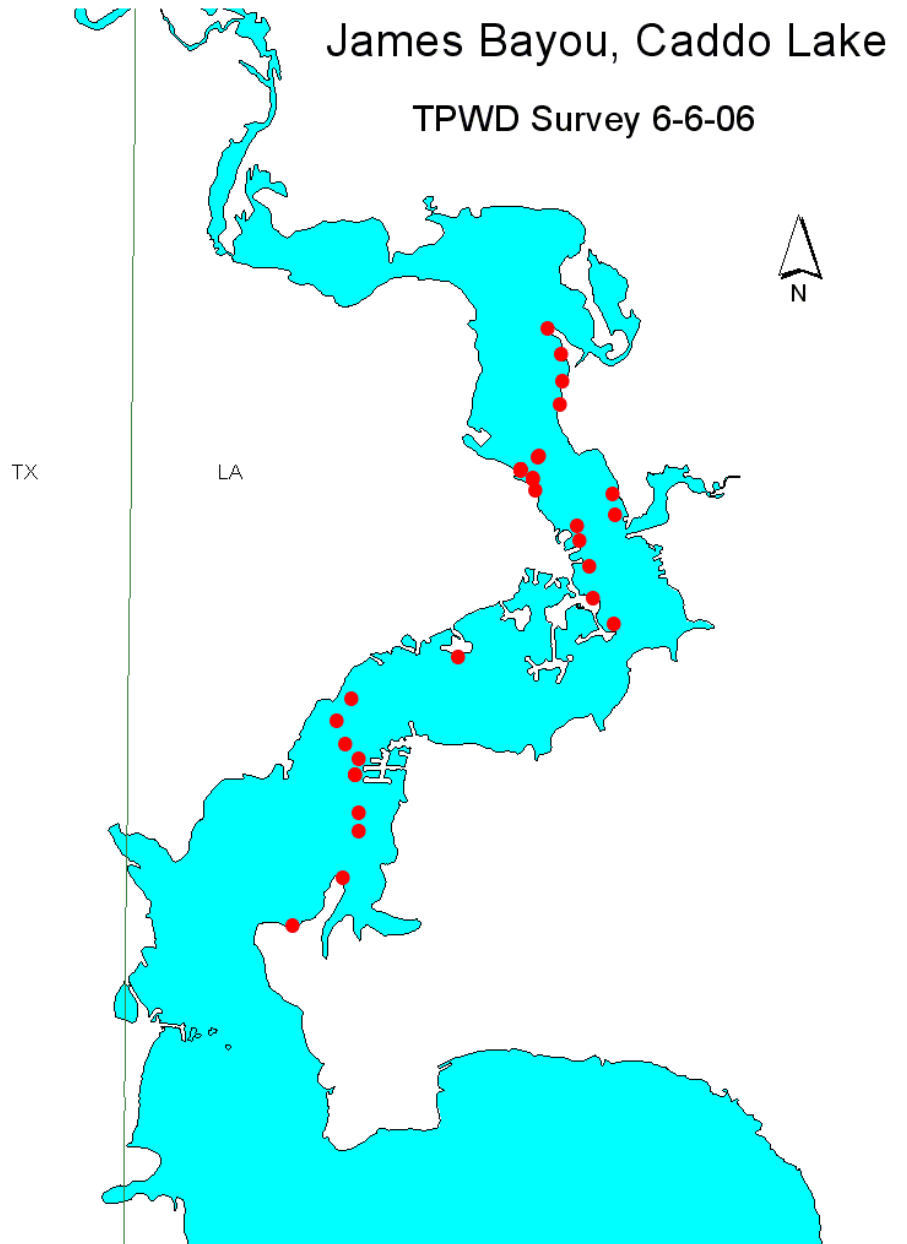
**Sparse examples
found beginning
around Boat Road B43
on Jeems Bayou.**

**Large infestations
found north of Boat
Road B70.**

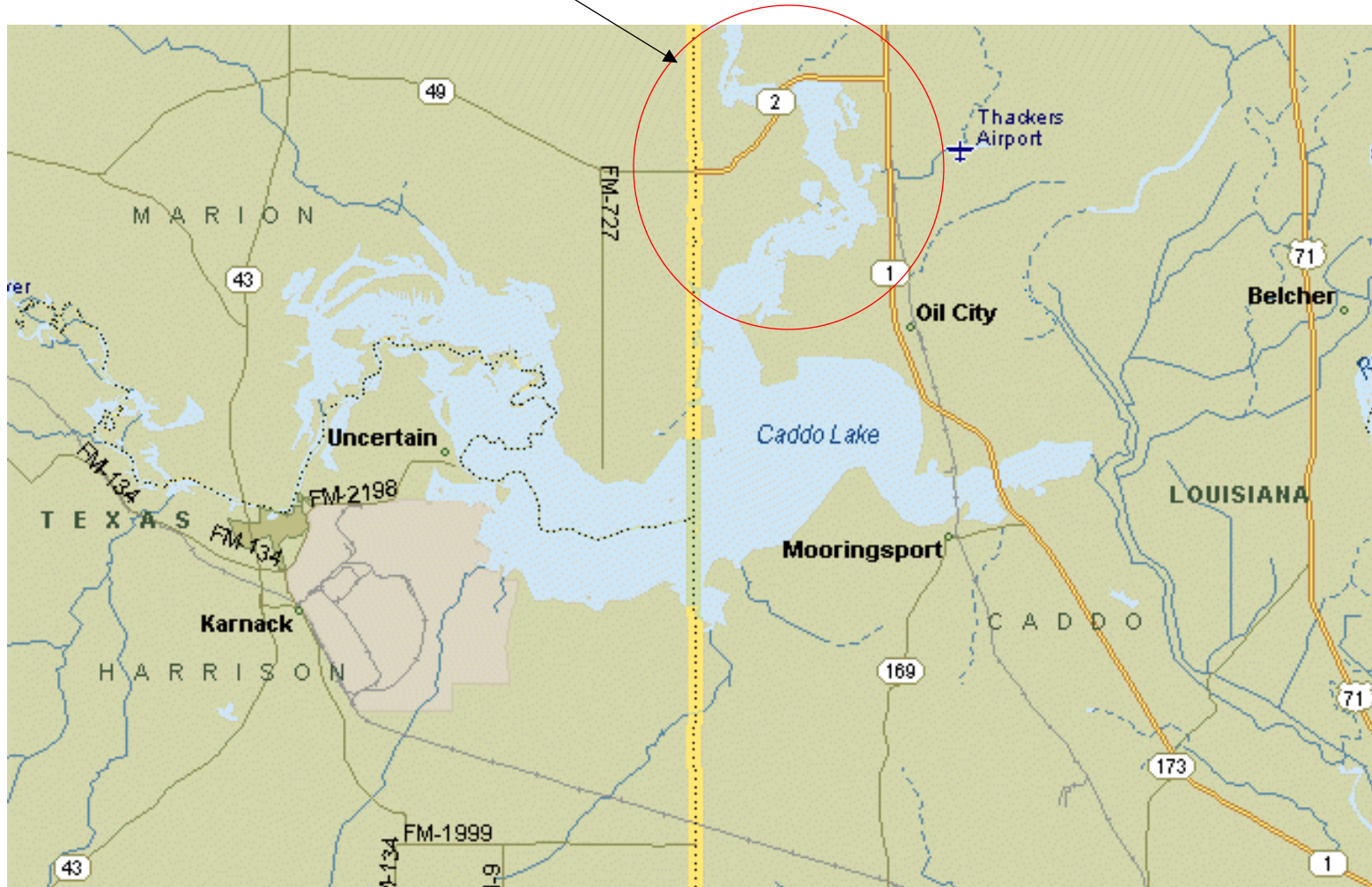
**Initial estimates
around 250 acres in
Jeems Bayou.**



**Salvinia site
locations
mapped by
TPWD 6-6-06.**



Jeem's Bayou – (app. 3500 acres)



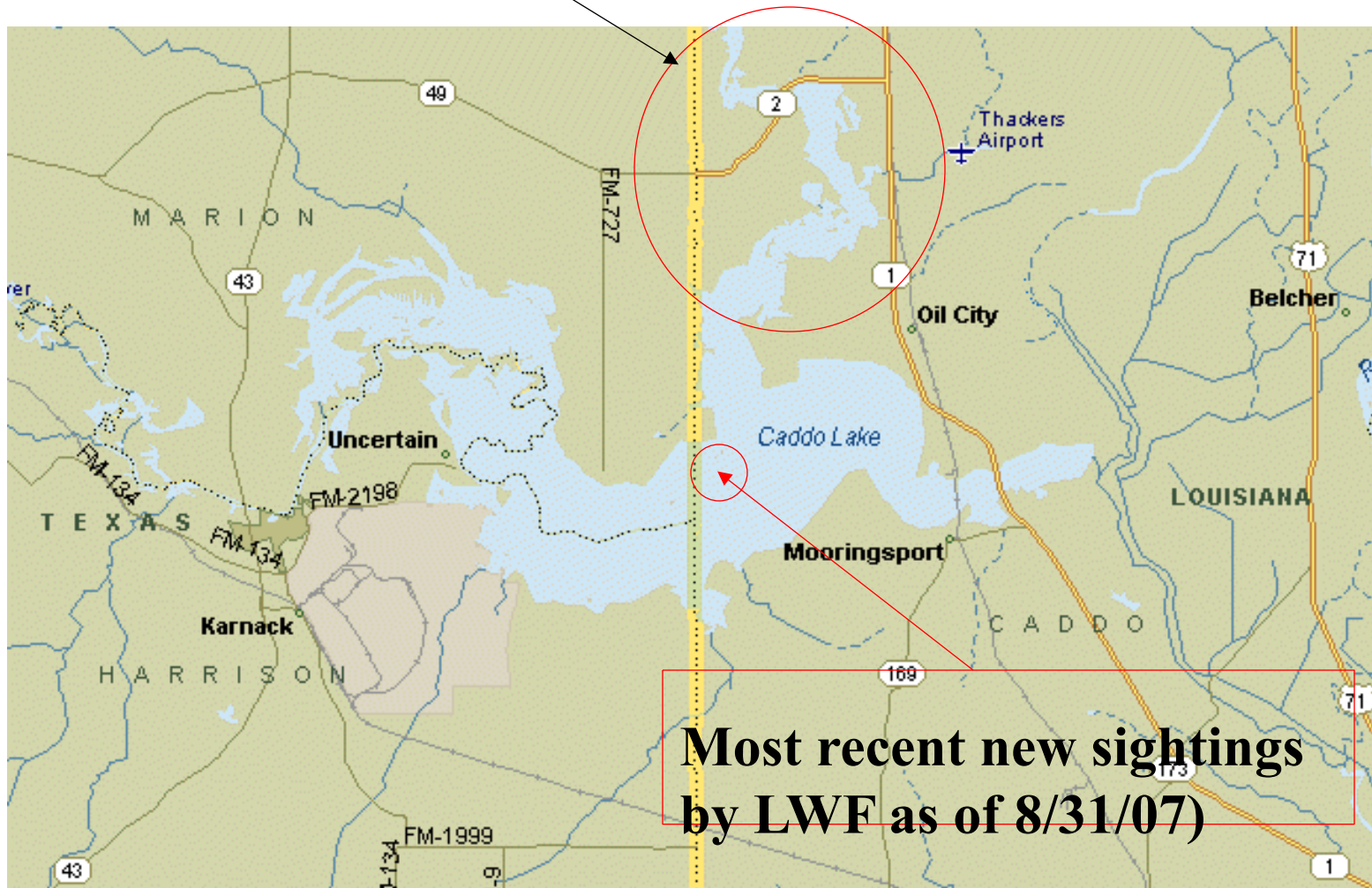
Caddo salvinia as of 8/11/06:

- Herbicide applications made to 317 acres on Caddo Lake at a cost of \$16,300 for the herbicide alone. Texas Parks and Wildlife assisted during initial herbicide applications.
- Herbicide applications made thus far have basically kept the population in check as coverage remains at approximately 250 acres.

Caddo salvinia as of 8/31/06:

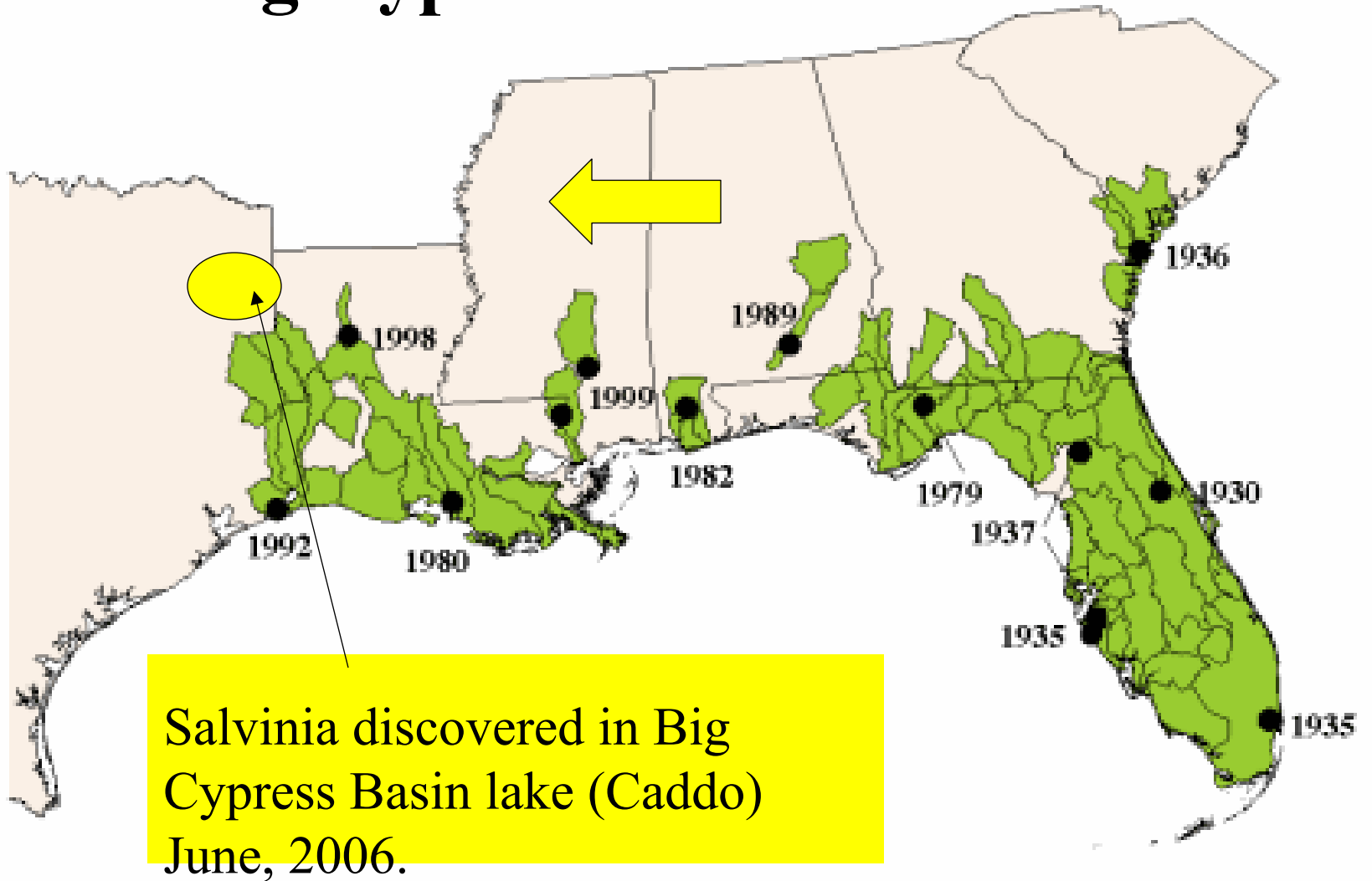
- Additional sightings at Jap Island, Rice's Pocket, and Hawley's Arm – near Texas state line.
- Plants found were sparse populations amidst other vegetation close to shoreline.
- Additional herbicide spraying took place, including above locations, 8/28 – 8/30.

Jeem's Bayou – (app. 3500 acres)

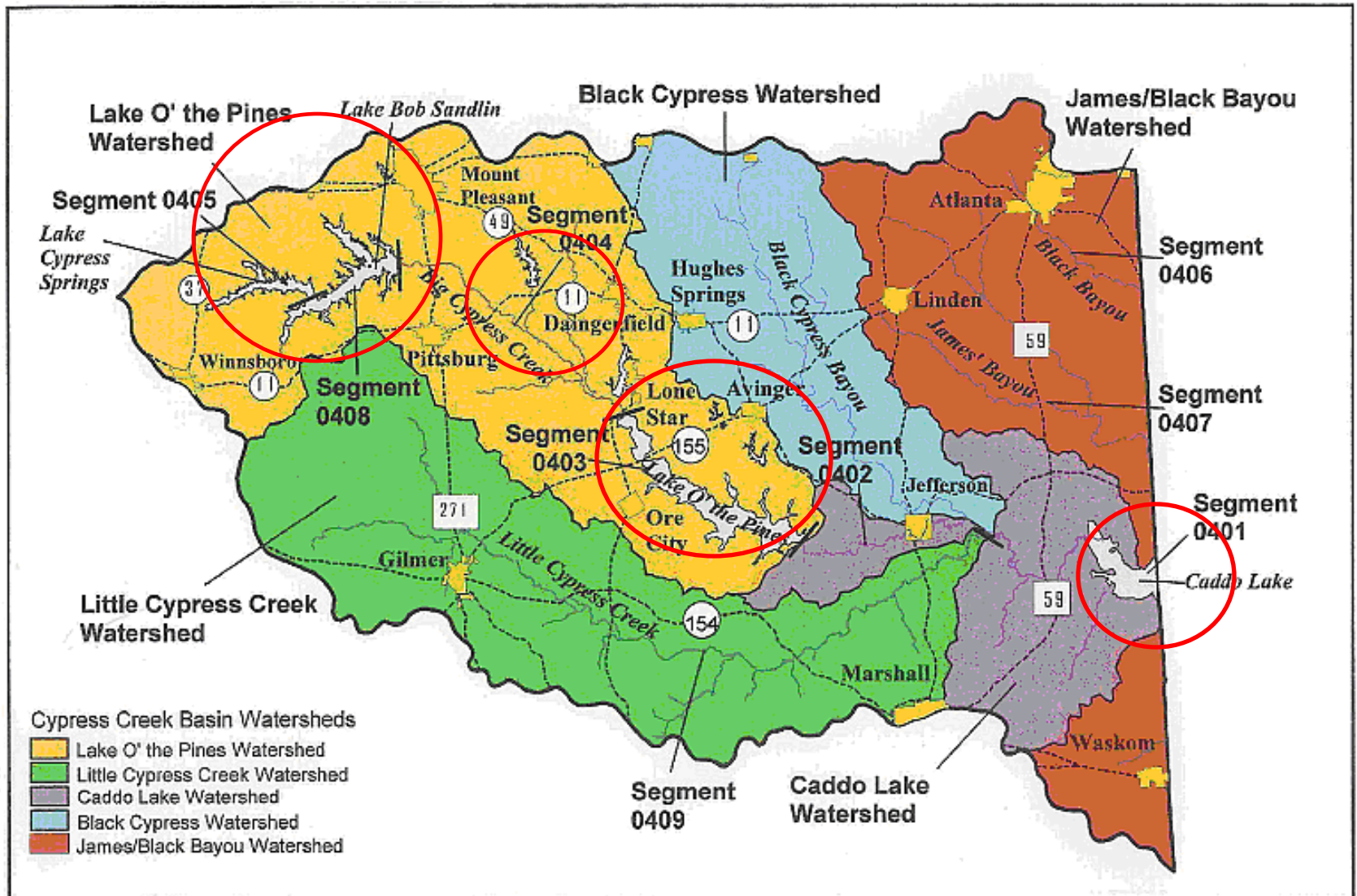


LWF checks for salvinia in LA waters, TPWD in Texas.

Is salvinia a threat to ALL lakes in Big Cypress Basin?



Without control & prevention measures, spread of salvinia across Caddo & into other BCB lakes is inevitable.



Under ideal conditions, herbicide spraying is effective control of salvinia.



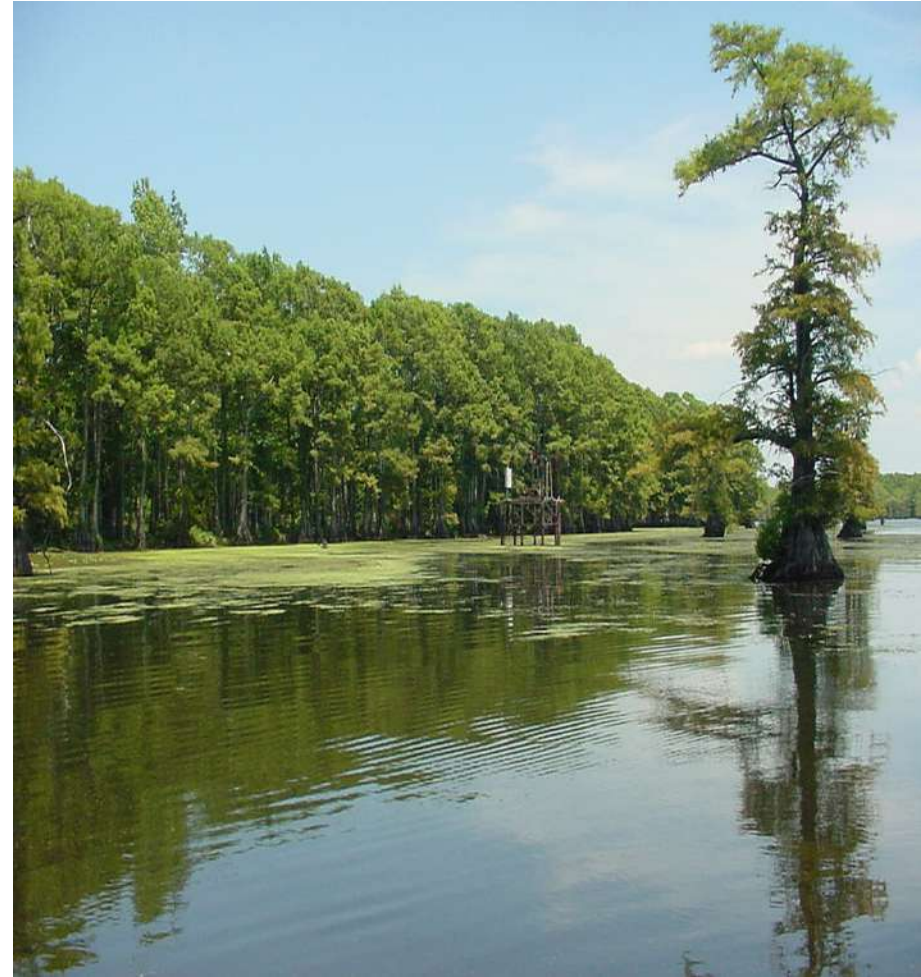
Near Frog Island before spraying.



Same location 4 days after spraying.



Before spraying.



40 days after spraying.

Bonham's Landing, Jeem's Bayou



Before.



After.

Photos: Jeff Sibley, LDWF

- **Salvinia thrives in conditions NOT ideal for spraying.**
- **Even when sprayed, plant has many defenses & hard to kill.**

It is easier to
PREVENT new
infestations than
to eradicate
them once they
are established.



BCB Watershed Stakeholders Physical Concerns Work Group has strong stake in salvinia prevention & control at Caddo.

- Support measures to control identified populations in Caddo with herbicide spraying.
- Support measures for immediate response to new infestations at Caddo when discovered.
- Support boater education & awareness throughout Arklatex area.
- Maintain vigilance at LOP, LBS, and CSL & prepare to respond immediately if/when salvinia found there.

Louisiana acting to protect lakes not yet infested as well as to control lakes where salvinia is already present.

- City of Shreveport appropriated \$500,000 for invasive plants control & prevention at Cross Lake – city's primary water supply.
- Caddo Parish Commission appropriated \$20,000 to support spray teams at Caddo.

What Caddo Lake Salvinia Community Response Task Force is doing.

- Established bi-state organizational structure, with Louisiana & Texas GCLAs taking lead.
- Assisting with identifying & obtaining additional funds for herbicides & other essentials.
- Developing long term plan to include education & awareness & actions to foster legislative support for adequate federal & state funding.
- Implementing boater education initiatives.

WARNING

Salvinia Infestation Zone!

Non-residents should not enter this area.

(Your boat can spread salvinia to other parts of the lake)



Louisiana DWF & Texas P&W are spraying herbicide to control Giant Salvinia on Caddo. Please avoid this area. **It is illegal to transport salvinia.**



Inspect boats & trailers for salvinia when entering & leaving the lake!
Greater Caddo Lake Associations of Texas & Louisiana

For
more
information

www.caddolakenews.net

Stop
salvinia
Now!

Boards by: Cassidy Jones
Lumber & Building Materials

Sign banner by:

Fabrication by Johnny Procell

8 On Water Warning Signs to be deployed next week. Floats provided by NETMWD.



Boat Ramp signs & disposal containers will be deployed at all Texas side public boat ramps.



ATTENTION BOATERS!

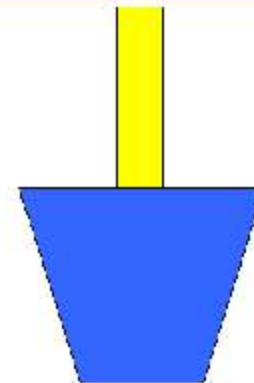
Areas of Caddo Lake are infested with giant salvinia. This aggressive invasive plant is **MORE** threatening than all other invasive water weeds because it reproduces by fragmentation. **AVOID** operating boats in vegetation where salvinia may be growing.



Above: salvinia matting in water.
Below: salvinia clinging to boat.

It is a **FEDERAL CRIME** to transport salvinia. It is your responsibility to remove any salvinia from your boat & trailer before entering or departing these waters.

More Info: www.caddolake.news.net





If this is your neighborhood...

You should join the CADDO LAKE
NEIGHBORHOOD SALVINIA WATCH.

www.caddolakenews.net

Effort to reach all shoreline residents & property owners on Texas side to organize a neighbor-to-neighbor boater education campaign.

Other possible steps include:

- Salvinia information Workshops & Lake Tours for groups & organizations.
- Mailers to all registered boat owners in zip codes within half day's drive of all BCB watershed lakes.
- Design & funding for a "Quick Response" spray team, including flexibility to address small infestations in isolated areas when discovered.
- Possible use of containment barriers in unique situations.
- Expand Boat Ramp Warning Signs to nearby lakes.
- Additional On Water signs to respond to additional discoveries as they are reported.



Salvinia must be recognized as a serious and immediate threat to the entire Big Cypress Basin.

Watershed Stakeholders Physical Concerns group can help prevent expansion of salvinia from present infestations.