

ACUITY

KEY COMPONENTS OF ACUITY

- 10 Online and offline tests
- 10 Online reports virtually instantly
- 10 Online Instructional Resources
- 10 Item banks for customized tests
- 10 **Above-Grade level testing** for compacting, differentiation in the general classroom, acceleration, present levels for IEPs.

ACUITY BENCHMARK ASSESSMENTS

Diagnostics from CTB

Assess student knowledge of core content areas

Aligned to West Virginia's CSOs

Broad Curriculum Mapping

Custom Assessments

Customized to student needs

Created by teachers

Aligned to West Virginia's CSOs

Created from

⑩ Acuity's 25,000 item bank

⑩ WV custom item bank

State Authored Benchmark Assessments

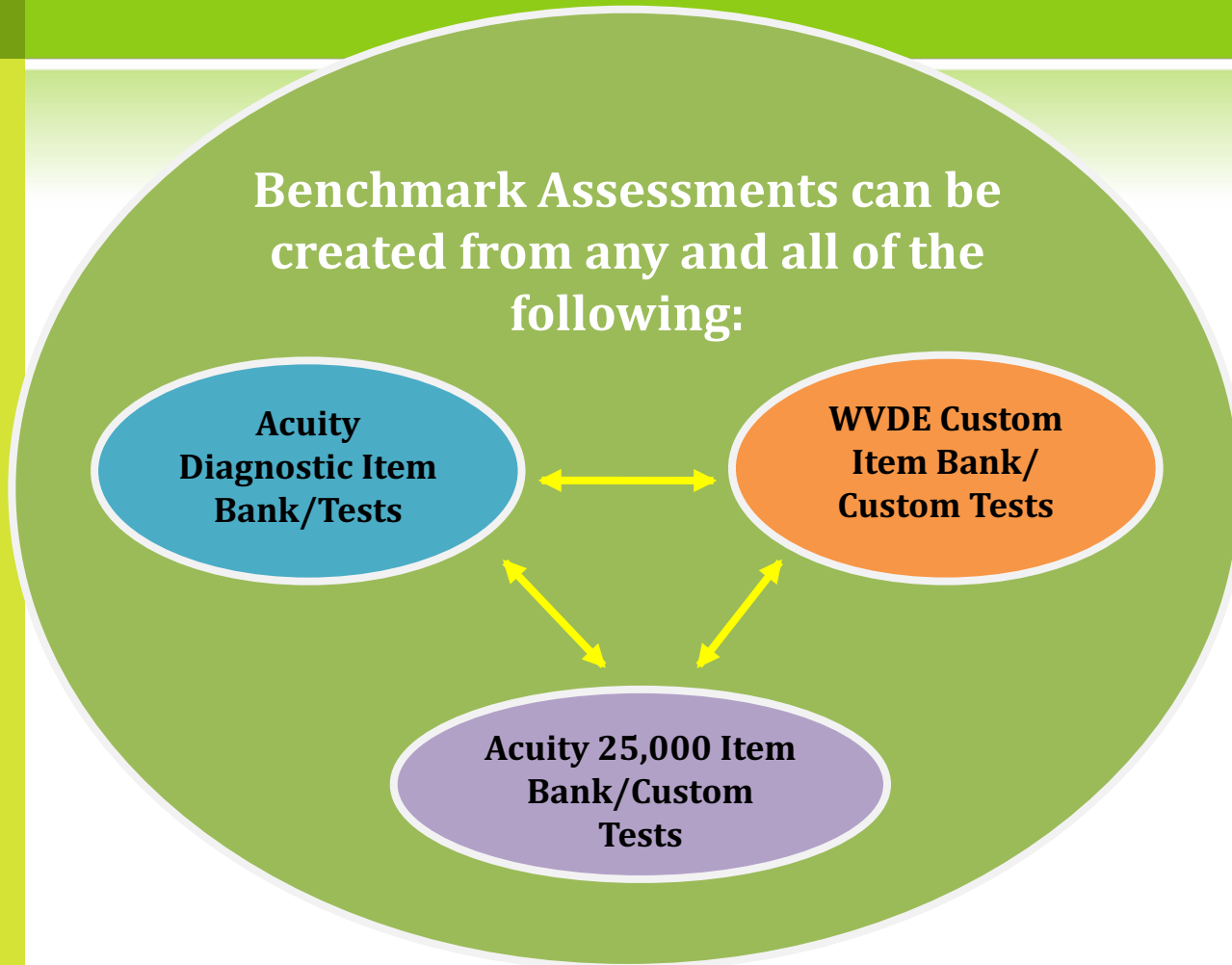
ITEM BANKS

Benchmark Assessments can be created from any and all of the following:

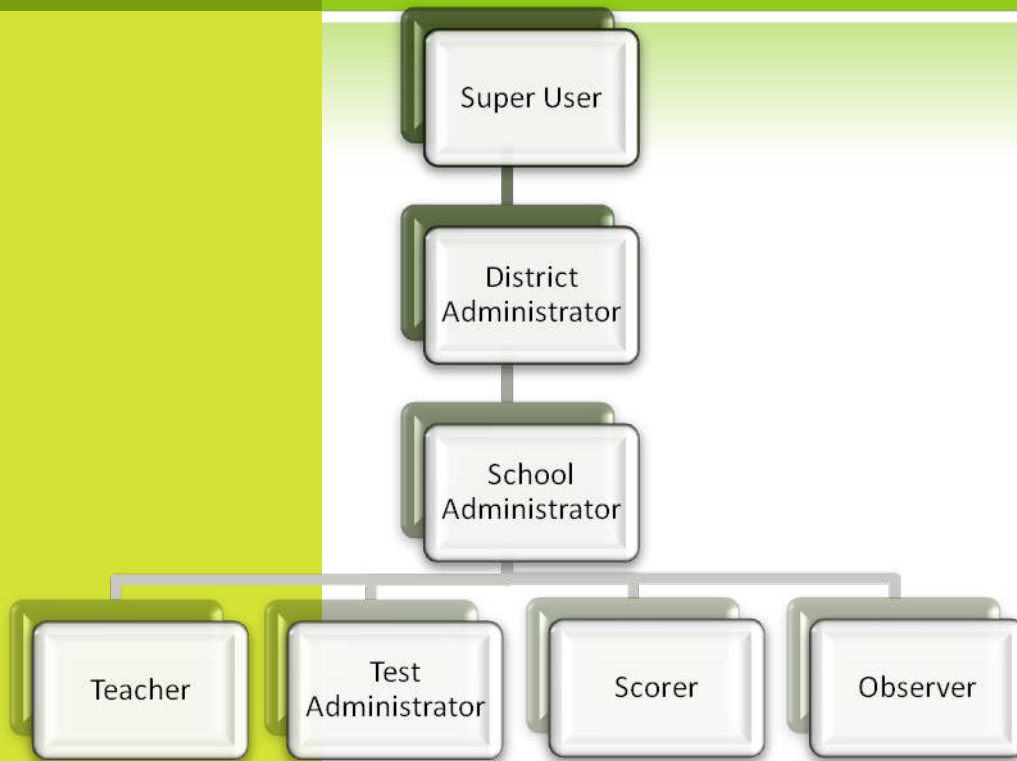
Acuity
Diagnostic Item
Bank/Tests

WVDE Custom
Item Bank/
Custom Tests

Acuity 25,000 Item
Bank/Custom
Tests



PERMISSIONS



Super User

- ⊙ WVDE (John Miller)
- ⊙ District Administrator
- ⊙ School Administrator
- ⊙ Teacher
- ⊙ Test Administrator
- ⊙ Scorer
- ⊙ Observer
- ⊙ Student

ASSIGN CUSTOM TEST:

<http://acuitytraining.ctb.com>

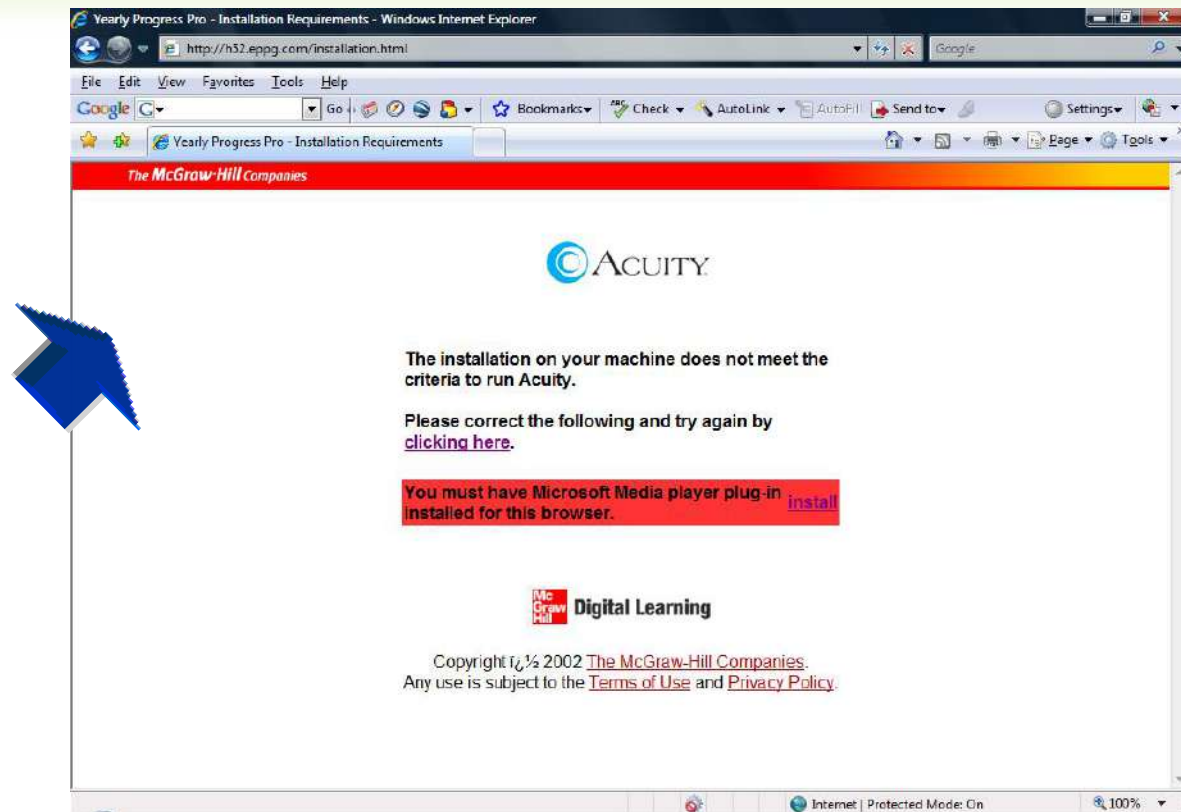
charliebrown

acuity123

ACUITY PLUGINS



ACUITY PLUGINS



HTTP://ACUITYTRAINING.CTB.C
OM

<https://www.acuityathome.com/login>

The McGraw-Hill Companies



Welcome to Acuity!

User Login

User Name:

Password:

To get started, type your User Name and Password in the fields above and click Enter Site.

Please [click here](#) if you do not remember your Password.

For technical assistance, please contact us at support@acuityforschool.com or 1 (800) 282-4705.

The McGraw-Hill Companies



(Currently School Administrator in WV 2008 School 001) Home Help Contact Us Logout

Welcome, CHARLIE BROWN!

Messages

No New Messages

[Back to top](#)

- Tests
- Reports
- Instructional Resources
- Management
- My Settings
- Additional Help



Assessment Reports: 2003-3000

Assessment Report Options

- Tests
- Reports
- Assessment Reports ▸
- AYP Reports
- Item Analysis Reports
- Longitudinal Reports
- Portfolio Reports
- Prior Year Reports
- Roster Reports
- Summary Reports
- Instructional Resources
- Management
- My Settings
- Additional Help

Single Reports:

▶ [Student Assessment Report](#)

▶ [Class Assessment Report](#)

▶ [School Assessment Report](#)

Batch Reports:

▶ [Batch Generate Student Assessment Reports by Class](#)

▶ [Batch Generate Student Assessment Reports by School](#)

▶ [Batch Generate Class Assessment Reports by School](#)

21ST CENTURY SPECIAL EDUCATORS: LEADING THE CHANGE!



Student Search

- Tests
- Reports
 - Assessment Reports
 - AYP Reports
 - Item Analysis Reports
 - Longitudinal Reports
 - Portfolio Reports
 - Prior Year Reports
 - Roster Reports
 - Summary Reports
- Instructional Resources
- Management
- My Settings
- Additional Help

Student Search Criteria

* Required

*School:

Grade of Student(s):

First Name:

*Last Name:

Primary 2nd Grade Tina Anderson
 Intermediate 4th Grade Eleanor Culver
 Middle 7th Grade Kenneth Ayon
 High 10th Grade Donna Hood



- Tests
- Reports
 - Assessment Reports
 - AYP Reports
 - Item Analysis Reports
 - Longitudinal Reports
 - Portfolio Reports
 - Prior Year Reports
 - Roster Reports
 - Summary Reports
- Instructional Resources
- Management
- My Settings
- Additional Help

Student Search

Student Search Criteria * Required

*School:

Grade of Student(s):

First Name:

*Last Name:

Search Results

Sort by:

Page 1 of 1 Show 10 results per page

Student	Grade Level	School
---------	-------------	--------



(Currently School Administrator in WV 2008 School 001) Home Help Contact Us Logout

Student Assessment Report: 2003 - 3000

Report Filters

Subject: Mathematics

Assessment Type: Custom

Assessment: SETLA Grade 4 (wvseed)

Get Report

Reset Report Filters

- Tests
- Reports
- Assessment Reports
- AYP Reports
- Item Analysis Reports
- Longitudinal Reports
- Portfolio Reports
- Prior Year Reports
- Roster Reports
- Summary Reports
- Instructional Resources
- Management
- My Settings
- Additional Help



Student Assessment Report: 2003 - 3000

Report Filters

Subject:

Assessment Type:

Assessment: SETLA Grade 4 (wvseed)

[Get Report](#) [Reset Report Filters](#)

ELEANOR CULVER

Student ID:	500194	Teacher:	BAKER MR	Print Version
Test Delivery:	Paper, Untimed	Class:	BAKER MR.	
Report Date:	06/08/09	School:	WV 2008 School 001	
		District:	Acuity WV DEMO 2008	

Test Name: 21ST CENTURY SPECIAL EDUCATORS: LEADING THE CHANGE!
 WVDE SETLA 2009 [View Item Analysis Report](#)

- Tests
- Reports
- Assessment Reports ▸
- AYP Reports
- Item Analysis Reports
- Longitudinal Reports
- Portfolio Reports
- Prior Year Reports
- Roster Reports
- Summary Reports
- Instructional Resources
- Management
- My Settings
- Additional Help

ACUITY

Assign Custom Test



ASSIGN CUSTOM TEST:

Select **Tests**

Select **Custom Tests**

Select **Create/Manage**

Choose **Subject**

Select **Show Existing Tests**



(Currently School Administrator in WV 2008 School 001)

Home

Help

Contact Us

Logout

▸ Tests

Assignment Status

Preview/Print

Scoring and Scan Processing

Custom Tests

▸ Reports

▸ Instructional Resources

▸ Management

▸ My Settings

▸ Additional Help

Tests

Menu



[Assignment Status](#)

View the status of assigned assessments



[Preview/Print](#)

Preview assessments and print test PDF files, instructions, constructed response answer sheets and answer keys for available assessments



[Scoring and Scan Processing](#)

Upload and correct errors in scan result files, score constructed response items, and enter offline responses for scoring



[Custom Tests](#)



Create, edit, assign, and share tests created by an educator



online data-driven inspire actionable data
achieve

▸ **Tests**

Assignments

Assignment Status

Preview/Print

Scoring and Scan Processing

Custom Tests ▸

Authored Items

▸ **Reports**

▸ **Instructional Resources**

▸ **Management**

▸ **My Settings**

▸ **Additional Help**

Custom Tests

Custom Test Options

- [Create/Manage](#) Find existing custom test or create new tests

- [Assign](#) Manage custom test assignments

- [Share](#) Share custom tests with other educators



(Currently School Administrator in WV 2008 School 001)

[Home](#) [Help](#)

[Contact Us](#) [Logout](#)

▸ **Tests**

Assignment Status

Preview/Print

Scoring and Scan Processing

Custom Tests ▶

▸ **Reports**

▸ **Instructional Resources**

▸ **Management**

▸ **My Settings**

▸ **Additional Help**

Create / Manage Custom Tests

Step 1 of 5: Find Existing or Create New

Search For Custom Tests

School: WV 2008 School 001

Subject:



Show Existing Tests

Create New Test

Additional Search Filters (Optional)

Created by Last Name:

Test Name:

Search



(Currently School Administrator in WV 2008 School 001)

[Home](#) [Help](#)

[Contact Us](#) [Logout](#)

▸ **Tests**

Assignment Status

Preview/Print

Scoring and Scan Processing

Custom Tests ▶▶

▸ **Reports**

▸ **Instructional Resources**

▸ **Management**

▸ **My Settings**

▸ **Additional Help**

Manage Custom Test Assignment

◀◀ [Back to Find Custom Test](#)

Step 2 of 4: Find Existing or Create New Assignment

Custom Test

Test Name: 4th grade decimals
Created By: BROWN, CHARLIE

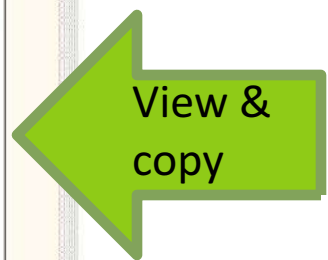
[Create New Assignment](#)

Test Assignments

Sort by:

◀◀ Page 1 of 1 ▶▶

Assignment Name	Created By	Start Date	Edit	Delete
4th grade decimals	BROWN, CHARLIE	10/09/2009	Edit	Delete
Sharp - Decimals	BROWN, CHARLIE	10/06/2009	Edit	Delete
abc	BROWN, CHARLIE	10/08/2009	Edit	Delete



▸ Tests

Assignment Status

Preview/Print

Scoring and Scan Processing

Custom Tests

▸ Reports

▸ Instructional Resources

▸ Management

▸ My Settings

▸ Additional Help

Manage Custom Test Assignment

◀ Back to Find Custom Test Assignment Save and Proceed to Next

Step 3 of 4: Assignment Name and Test Window

Test Assignment

Assessment: 4th grade decimals

Assignment Name:

Assignment names may not contain the following characters: less than (<), greater than (>), ampersand (&), period (.), double quote ("), pound (#), forward slash (/)


Assigned By: BROWN, CHARLIE

Time Limit: None

Assessment Calculator Availability: No


Override and Enable Calculator:

Disable any Audio:

 A student can log in and start the test any time between the Start Time and End Time.

Assignment Start Time:

Assignment End Time:

 You may choose to have test items displayed in a random order if the test is being taken online. Each test will contain the same items, only the order will be impacted. Reports will not be impacted by the item order.

Overall Test Delivery:

Allow Students to Access Remotely:



(Currently School Administrator in WV 2008 School 001)

Home

Help

Contact Us

Logout

▸ Tests

Assignment Status

Preview/Print

Scoring and Scan Processing

Custom Tests

▸ Reports

▸ Instructional Resources

▸ Management

▸ My Settings

▸ Additional Help

Manage Custom Test Assignment

◀◀ Back to Assignment Name

Step 4 of 4: Select Students

Search for Students

Assignment Name: 4th grade decimals

Search Filters

Grade Level:

- Kindergarten ▲
- 1st Grade
- 2nd Grade
- 3rd Grade ▼

School: Select All

WV 2008 School 001

Test Accomodations (optional):

Calculator
Untimed Test

update classes

[Click here to Narrow Search by Student Name](#)

Search for Students

Reset Search Filters

CREATE TESTS

Select **Tests**

Select **Custom Tests**

Select **Create/Manage**

Choose **Subject**

Select **Create New Tests**



(Currently School Administrator in WV 2008 School 001)

[Home](#) [Help](#)

[Contact Us](#) [Logout](#)

▸ **Tests**

Assignment Status

Preview/Print

Scoring and Scan Processing

Custom Tests ▶

▸ **Reports**

▸ **Instructional Resources**

▸ **Management**

▸ **My Settings**

▸ **Additional Help**

Create / Manage Custom Tests

Step 1 of 5: Find Existing or Create New

Search For Custom Tests

School: WV 2008 School 001

Subject:



Show Existing Tests



Create New Test

Additional Search Filters (Optional)

Created by Last Name:

Test Name:

Search



(Currently School Administrator in WV 2008 School 001)

Home

Help

Contact Us

Logout

Tests

Assignment Status

Preview/Print

Scoring and Scan Processing

Custom Tests

Reports

Instructional Resources

Management

My Settings

Additional Help

Custom Test Assembly

Back to Manage Custom Tests

Step 2 of 5: Select Skills, Passages or Item Numbers

Search For Skills, Passages or Item Numbers

Search For: Skill Groups

Standards or Skills Groups

Grade: 6th Grade

Skill Group: Geometry

Item Type: Any

Fill In The Blank
Multiple Choice
Constructed Response
Grid-In

You can create a custom test with items from item banks. Please select the sources below.

Custom Item Banks:

- Acuity Custom Item Bank

CREATE TESTS

Click Select Item Manually
(or let computer select
View – select
Scroll down and Save
Name test
Save as draft

• Tests

Assignment Status

Preview/Print

Scoring and Scan Processing

Custom Tests

• Reports

• Instructional Resources

• Management

• My Settings

• Additional Help

Custom Test Assembly

◀ Back to Select Skills

Proceed to Next Step ▶▶

Step 3 of 5: Select Items

Item Selection

- Item Selection:**
- Select Items Manually
(You will individually select each item for the test)
 - Allow Computer To Select Items
(You will provide the number of items you would like on the test for each selected skill and the computer will select the items for you)

Available Items

Select the items for each skill and assessment type. Click the "Proceed to Next Step" button when complete.

[Switch to Passage View](#)

Skill	Assessment Type	Sample Item	Item Type	Item Bank	Has Passage	# of Items Available	# of Items Selected	Select Items
Total Items:						540	0	
Identify 2-dimensional shapes in different orientations using rotations (turns), reflections (flips), and translations (slides).								
	Rotations/reflections/translations: Level 2	View Sample	Multiple Choice	Acuity	No	36	0	Select Items
Recognize perpendicular, parallel, and intersecting lines in the environment.								
	multiple choice	View Sample	Multiple Choice	Acuity	No	36	0	Select Items
Use models to develop formulas for finding areas of triangles, parallelograms and circles.								
	multiple choice	View Sample	Multiple Choice	Acuity	No	36	0	Select Items
Classifying Quadrilaterals								
	Classifying Quadrilaterals	View Sample	Multiple Choice	Acuity	No	36	0	Select Items
Analyze and solve complex problem situations involving geometry and measurement.								



Tests

Assignment Status

Preview/Print

Scoring and Scan Processing

Custom Tests

Reports

Instructional Resources

Management

My Settings

Additional Help

Custom Test Assembly

[Back to Select Skills](#)

[Proceed to Next Step](#)

Step 3 of 5: Select Items

Item Selection

- Item Selection:**
- Select Items Manually
(You will individually select each item for the test)
 - Allow Computer To Select Items
(You will provide the number of items you would like on the test for each selected skill and the computer will select the items for you)

Available Items

Select the items for each skill and assessment type. Click the "Proceed to Next Step" button when complete.

[Switch to Passage View](#)

Skill	Assessment Type	Sample Item	Item Type	Item Bank	Has Passage	# of Items Available	# of Items Selected	Select Items
Total Items:						540		
Identify 2-dimensional shapes in different orientations using rotations (turns), reflections (flips), and translations (slides).								
	Rotations/reflections/translations: Level 2	View Sample	Multiple Choice	Acuity	No	36	4	Select Items
Recognize perpendicular, parallel, and intersecting lines in the environment.								
	multiple choice	View Sample	Multiple Choice	Acuity	No	36	4	Select Items
Use models to develop formulas for finding areas of triangles, parallelograms and circles.								
	multiple choice	View Sample	Multiple Choice	Acuity	No	36	0	Select Items
Classifying Quadrilaterals								

▸ Tests

Assignment Status

Preview/Print

Scoring and Scan Processing

Custom Tests ▶

▸ Reports

▸ Instructional Resources

▸ Management

▸ My Settings

▸ Additional Help

Custom Test Assembly

◀◀ Back to Order Items

Step 5 of 5: Provide Test Options

Test Options

Enter a name for this test:

6th Geometry

Custom test names may not contain the following characters: less than (<), greater than (>), ampersand (&), period (.), double quote ("), pound (#), forward slash (/)

Total number of questions for this test: 16

Do you want to set a time limit?: No Yes minutes

Select a reference sheet: None Selected
[Select a new reference sheet](#)

Select test Tools: CALCULATOR

Performance tiers: Tier 1 (0-25%), Tier 2 (26-50%), Tier 3 (51-75%), Tier 4 (76-100%)



This test may **only** be updated if it is Saved as Draft. To assign this test, it **must** be Saved as Final.

Publishing Option: Save as Draft



Allow test to be shared with other Acuity users in your district

Save as Final >> Allow data from test results to be extracted for school and district wide administration and reporting

Preview Test

Save Test

▸ Tests

Assignment S

Preview/Print

Scoring and Scan Processing

Custom Tests

▸ Reports

▸ Instructional Resources

▸ Management

▸ My Settings

▸ Additional Help

Custom Test Assembly

Summary



You have successfully added/modified the following test.

Custom Test Summary

Custom Test Name: 6th grade math-geometry

Time Limit: None

Publishing Option: Save As Draft

Allow Sharing with other Acuity users in your district: No

Allow data from test results to be used for district level analysis: No

Skill Summary

Skill Name	Item Bank	Number of Items
Identify 2-dimensional shapes in different orientations using rotations (turns), reflections (flips), and translations (slides).	Acuity	4
Analyze and solve complex problem situations involving geometry and measurement.	Acuity	8
Recognize perpendicular, parallel, and intersecting lines in the environment.	Acuity	4

Create/Edit Another Test



ASSIGN CUSTOM TEST: STEP 6

Cannot assign students until
saved as Final.

PRACTICE AT

<http://acuitytraining.ctb.com>

charliebrown

acuity123