

Unit 2 Module 1 Session 1

Problems & Investigations-The Pet Store

Getting Ready-

- **TM T1** The Pet Store
- Colored Tiles (optional, for support)
- Student Math Journals
- Chart Paper

VOCABULARY

Columns

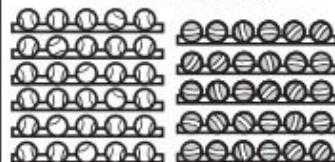
Groups of

Rows



- Solve multiplication problems with products to 100 using equal groups and arrays
- Multiply using the commutative property
- Use constructive criticism when reasoning with others

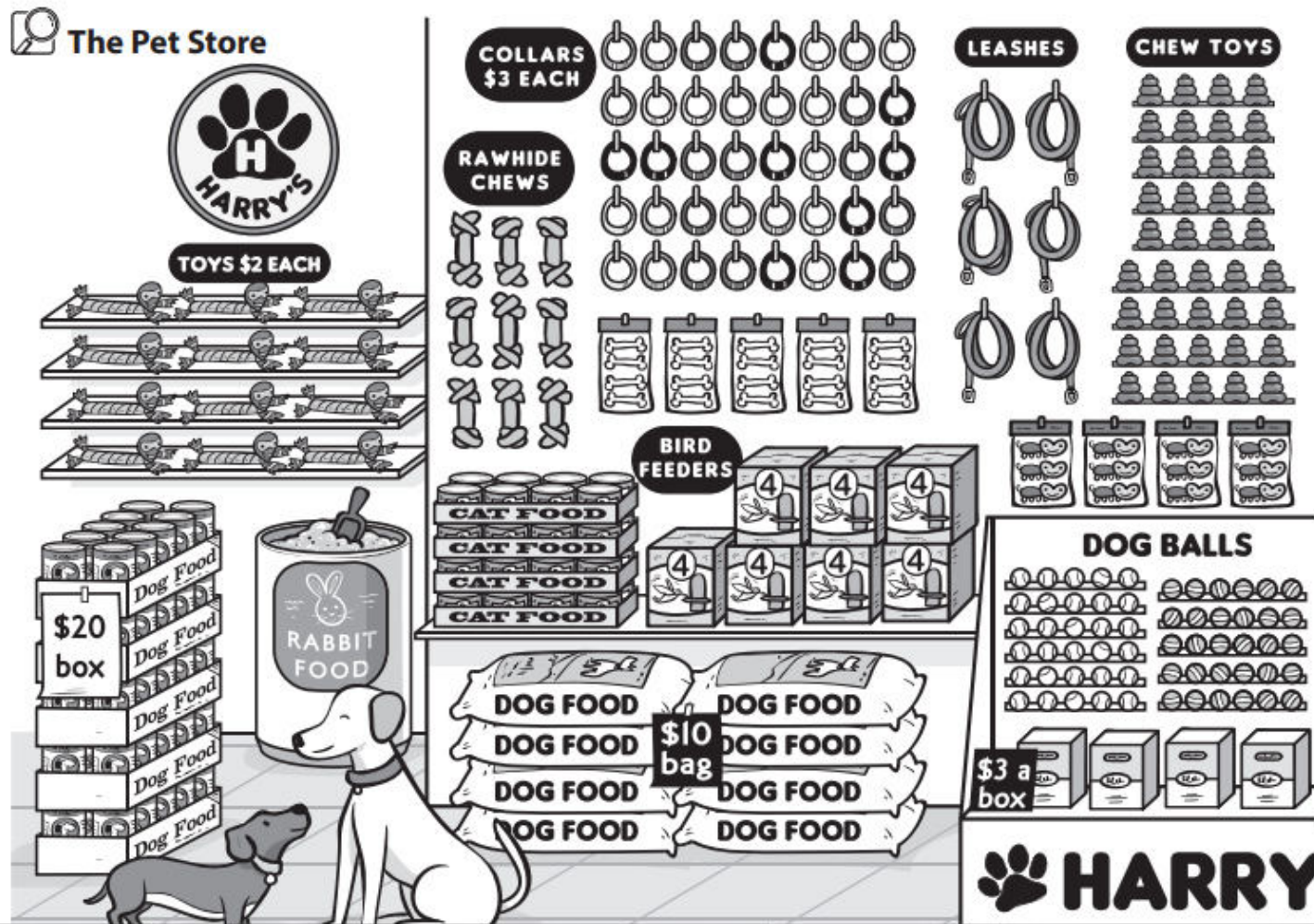
© The Author(s) 2015



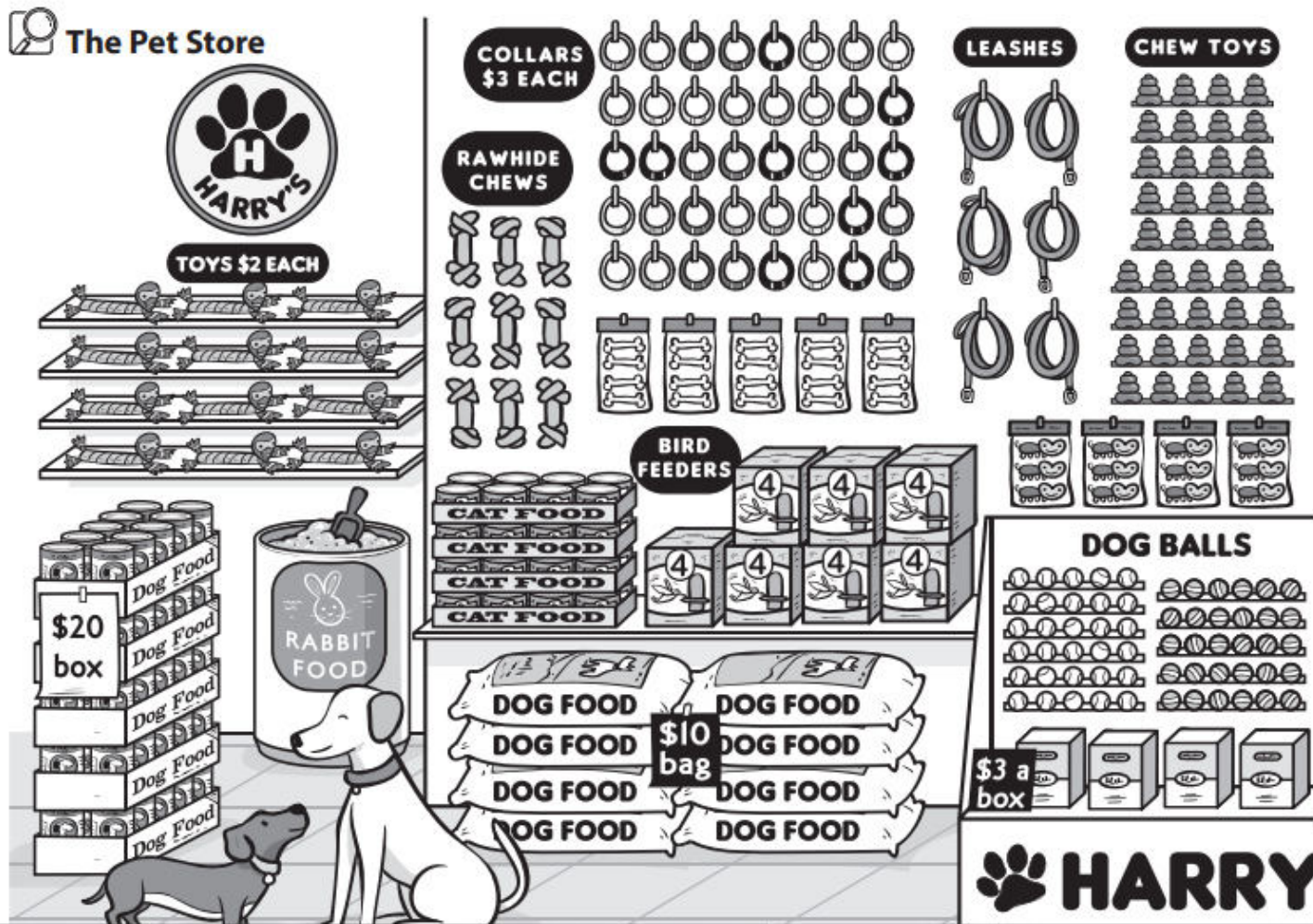
DOG FOOD

DOG FOOD

Let's think about equal groups



Can you
use equal
groups to
form an
equation?

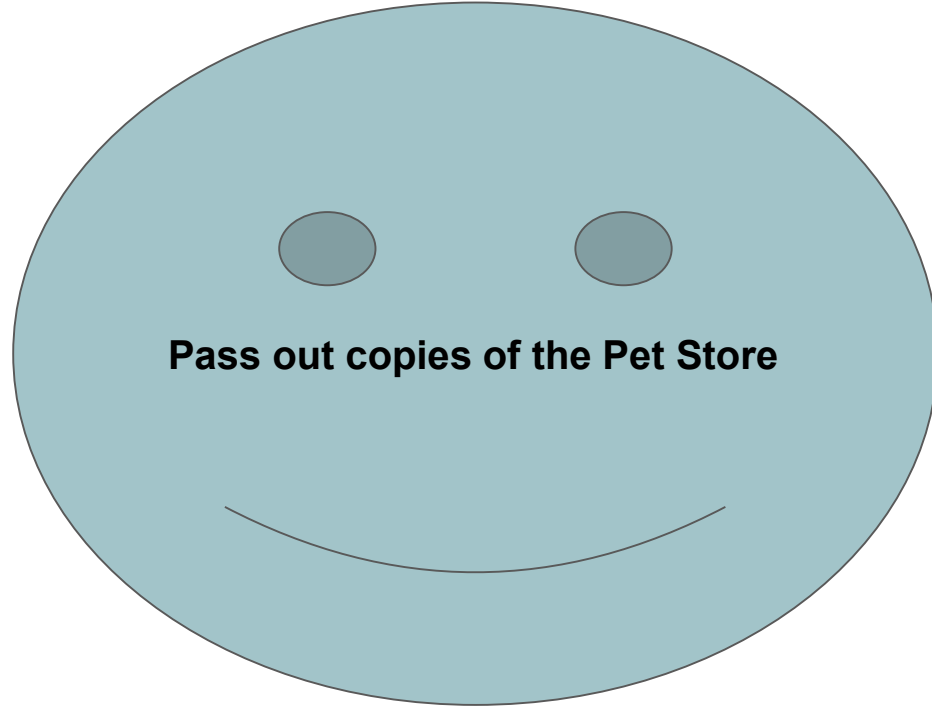


JOURNALS PLEASE



Write the heading:
The Pet Store and
today's date

You and your
partner will write 2-
3 observations in
your journals.



let's DISCUSS



- Did you find the total of at least two items?
- Did you find the total of three or more items?
- Did you find the total of five or more items?
- Did you find out how much some of your items cost?
- Did you discuss your work with your partner and support your partner as you worked together?

LET'S SHARE



Work Places

1A Make the Sum

1B Target Twenty

1C Blast Off to Space

1D Subtraction Bingo

1E Carrot Grab

1F Rabbit Tracks

1G Target One Hundred

1H Anything But Five

Daily Practice

SB 34 Addition and Subtraction: Mixed Review