



*A Sense of Place—and Loss:  
Artists and Scientists Facing Change*

**Saturday, September 21, 10 a.m. – 3 p.m.**

**Acadiana Center for the Arts**

Paddy Bowman, Founding Director of Local Learning

Brandon Ballengée, visual artist, biologist, and environmental educator

Janie Luster, artist and cultural preservationist of the United Houma Nation

Prosanta Chakrabarty, Associate Professor and Curator of Ichthyology at LSU

Suzanne Fredericq, Professor of Biology at UL

Lynda Frese, visual artist and UL Professor Emerita

Maida Owens, Louisiana Folklife Program Director

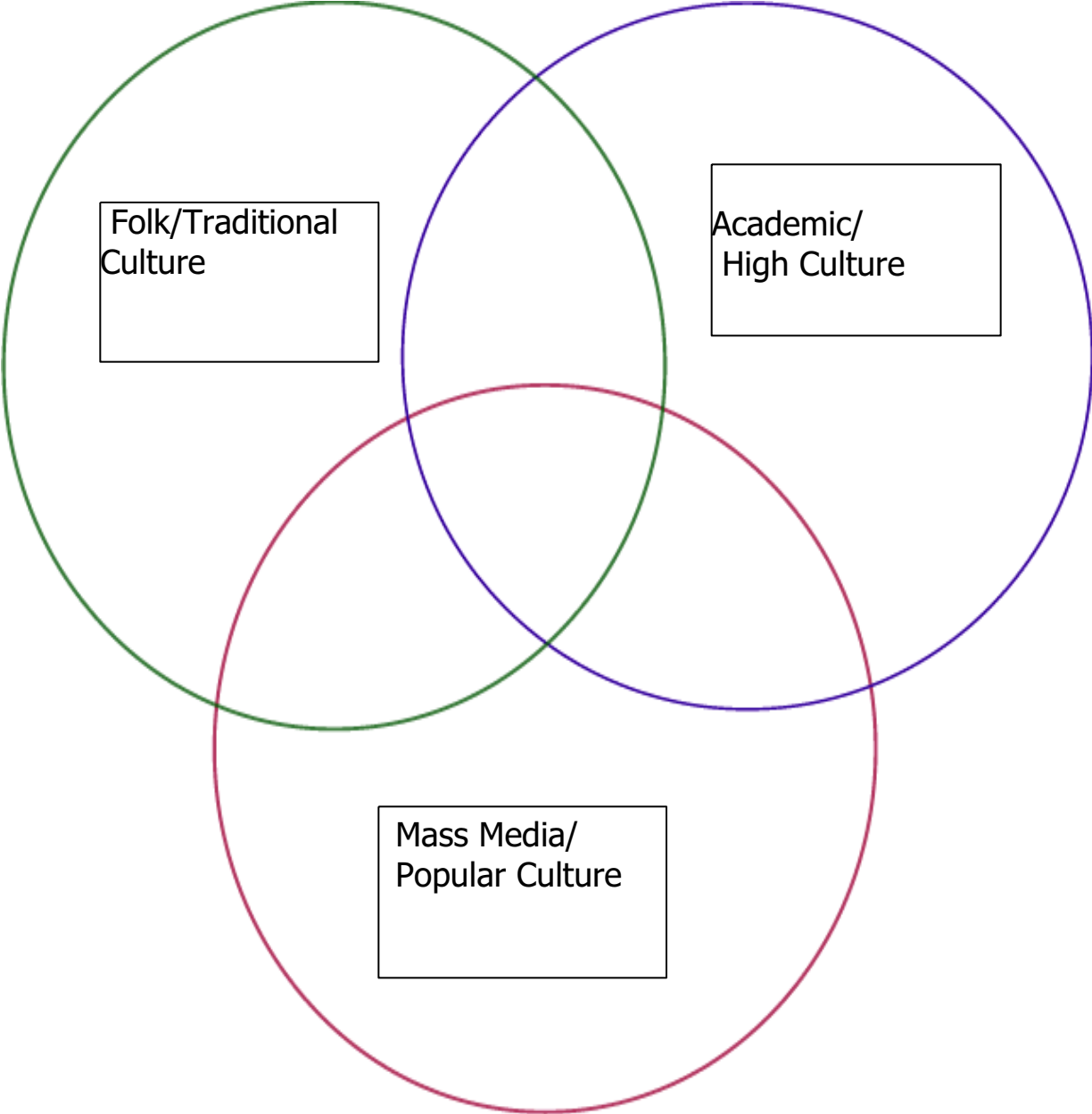


Learn more about the Bayou Culture Collaborative at [www.louisianafolklife.org/bayouculture](http://www.louisianafolklife.org/bayouculture).



[www.louisianafolklife.org/bayouculture](http://www.louisianafolklife.org/bayouculture)

# CULTURAL PROCESSES





EWalls



EWalls



WISCSnOw



Mickyzhu



Mickyzhu



Mickyzhu



klp



Zhaabadiis



Zhaabadiis



# Journal of Folklore and Education

## Common Ground: People and Our Places

### Volume 5, Issues 1 & 2



WISCSnOw



WISCSnOw



FlyEaglesFly



Mickyzhu



WISCSnOw



WISCSnOw



Hielo



FlyEaglesFly



Mickyzhu



Mickyzhu



lyjeachae



lyjeachae



lyjeachae



Hielo



Hielo



Hielo



minneSNOWta



minneSNOWta



minneSNOWta



lyjeachae



lyjeachae



EWalls



Hielo



apaehsos



apaehsos



FlyEaglesFly



minneSNOWta



minneSNOWta



EWalls



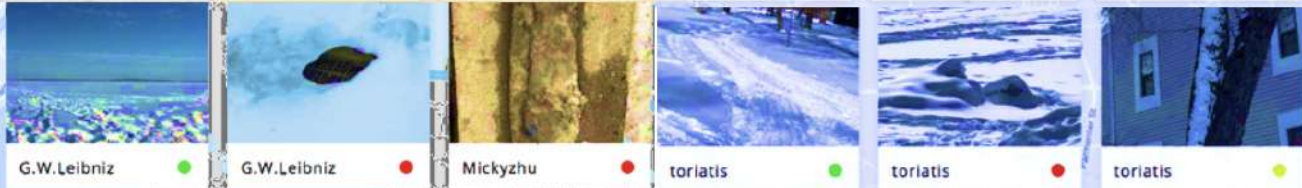
EWalls



EWalls



toriatis



G.W.Leibniz



G.W.Leibniz



Mickyzhu



toriatis



toriatis



toriatis



toriatis



bluemarble



bluemarble



toriatis



bluemarble



bluemarble





**Directions:** Select a place and list it in the center hexagon. Select categories of cultural perspectives from the box below and enter them in the remaining hexagons. Brainstorm specific ideas related to the place in each category and list them around the hexagons.

## SAMPLE CULTURAL PERSPECTIVES GRAPHIC ORGANIZER



### Cultural Perspectives

- |                              |                                   |
|------------------------------|-----------------------------------|
| Language and Dialect         | Foodways                          |
| Music and Dance              | Geography, Ecology, Environmental |
| Landscape, Land Use          | Soundscape                        |
| Religions                    | Crafts, Arts, Material Culture    |
| Customs, Celebrations        | Seasonal Round                    |
| Oral Narratives              | Names – Family, Place             |
| Ethnic and Folk Groups       | Occupations                       |
| Settlement History, Patterns |                                   |



Adapted from *Journal of Folklore and Education* (2018: Vol. 5.2, p. 122)









*A Sense of Place—and Loss:  
Artists and Scientists Facing Change*

**Saturday, September 21, 10 a.m. – 3 p.m.**

**Acadiana Center for the Arts**

Paddy Bowman, Founding Director of Local Learning

Brandon Ballengée, visual artist, biologist, and environmental educator

Janie Luster, artist and cultural preservationist of the United Houma Nation

Prosanta Chakrabarty, Associate Professor and Curator of Ichthyology at LSU

Suzanne Fredericq, Professor of Biology at UL

Lynda Frese, visual artist and UL Professor Emerita

Maida Owens, Louisiana Folklife Program Director



Learn more about the Bayou Culture Collaborative at [www.louisianafolklife.org/bayouculture](http://www.louisianafolklife.org/bayouculture).



[www.louisianafolklife.org/bayouculture](http://www.louisianafolklife.org/bayouculture)