



Brookfield High School

"Home of the Bobcats"

45 Longmeadow Hill Road- Brookfield, CT 06804

School: (203)775-7725 – Counseling Office: (203) 775-7725 x 7751 - Fax: (203) 775-7757



Principal
Marc Balanda
Assistant Principals
Edward Bednarik
Susan Griffin

SCHOOL PROFILE 2015~2016

School Counselors
Jennifer Gioglio, A-D
Gina Vanak, E-K
Debbie Burch, L-Q
Jean Baker, R-Z

COMMUNITY:

- ★ Located in northern Fairfield County
- ★ Rural suburban community to Danbury, Waterbury, Hartford, Stamford, New York City
- ★ Population: 17,000

SCHOOL FACTS:

- ★ Four-year college preparatory high school
- ★ Enrollment: 902 students
- ★ A/B Block Schedule
- ★ Accreditation: Connecticut State Department of Education and the New England Association of Schools and Colleges

AP COURSES:

AP Courses offered at BHS in 2015-2016 school year:

Biology	Music Theory
Calculus BC	Physics
Chemistry	Psychology
Computer Science	Spanish
English Literature	Statistics
Environmental Science	U.S. Government & Politics
Human Geography	U.S. History
Language & Composition	World History

CURRICULUM FEATURES:

- ★ AP, Honors, and College Prep level courses
- ★ Dual enrollment articulation with Western Connecticut State University: Honors Introduction to Calculus
- ★ University of Connecticut, Early College Experience: AP English Literature, AP Biology, AP Physics, AP Statistics, Discrete Math, Music Appreciation II, Honors US History, AP US History
- ★ A Taste of College Program (NVCC)
- ★ Work experience credit
- ★ Principal to President Scholarship (NVCC)

CREDITS:

One Carnegie Unit is granted for all subjects that meet eighty-three minutes on alternate days for the full school year. One-half Carnegie Unit is granted for one semester courses, and one quarter credit per semester for those courses that meet for only one quarter.

GRADING - SEMESTER STRUCTURE:

- ★ Grades are reported every 9 weeks
- ★ A semester course is 18 weeks long
- ★ A year long course is 36 weeks long
- ★ Mid-term and Final Exams are calculated at 10% each of the total grade for a year long course and 20% for a semester course; no mid-term exam for semester courses

GRADUATION REQUIREMENTS:

25 Credit Minimum:

English	4.0
Social Studies	4.0
Science	4.0
Mathematics	4.0
Health/PE	2.5
Career & Tech Ed	1.0
Fine/Performing Arts	1.0
Additional Electives	4.5

MEAN SAT REASONING TEST SCORES

CLASS OF 2015 (208 OUT OF 232 Seniors)

	CRITICAL READING	MATH	WRITING
BHS	539	538	533
CT	504	506	504
USA	495	511	484

MEAN ACT SCORES

CLASS OF 2015 (122 out of 232 Seniors)

	ENGLISH	MATH	READING	SCIENCE
BHS	24.6	24	25.4	24.5
CT	24.5	24.1	24.7	23.8
USA	20.4	20.8	21.4	20.9

DISTRIBUTION OF SAT TEST SCORES

CLASS OF 2015:

	Critical Reading	Math	Writing
700-800	9	13	79
600-690	50	51	50
500-590	77	76	72
400-490	58	49	62
300-390	14	19	14
200-290	0	0	1

GRADING SYSTEM:

Grade	Equivalent	Regular	Honors	A.P.
A+	97-100	4.33	4.67	5.33
A	93-96	4.0	4.34	5.0
A-	90-92	3.67	4.01	4.67
B+	87-89	3.33	3.67	4.33
B	83-86	3.0	3.34	4.0
B-	80-82	2.67	3.01	3.67
C+	77-79	2.33	2.67	3.33
C	73-76	2.0	2.34	3.0
C-	70-72	1.67	2.01	2.67
D+	67-69	1.33	1.67	2.33
D	65-66	1.0	1.34	2.0
F	64&below	0.0	0.0	0.0

INC	Incomplete
P	Pass
0 credit	No credit due to absences in excess of policy
NM	No Mark/Medical Excuse
WP	Withdrawn – Pass
WF	Withdrawn – Fail
AUD	Audit

GPA and DECILE RANKING:

Brookfield High School reports a **decile rank** for its senior students. The senior class is divided into ten equal parts based on the student’s six semester weighted GPA. GPA is calculated based on:

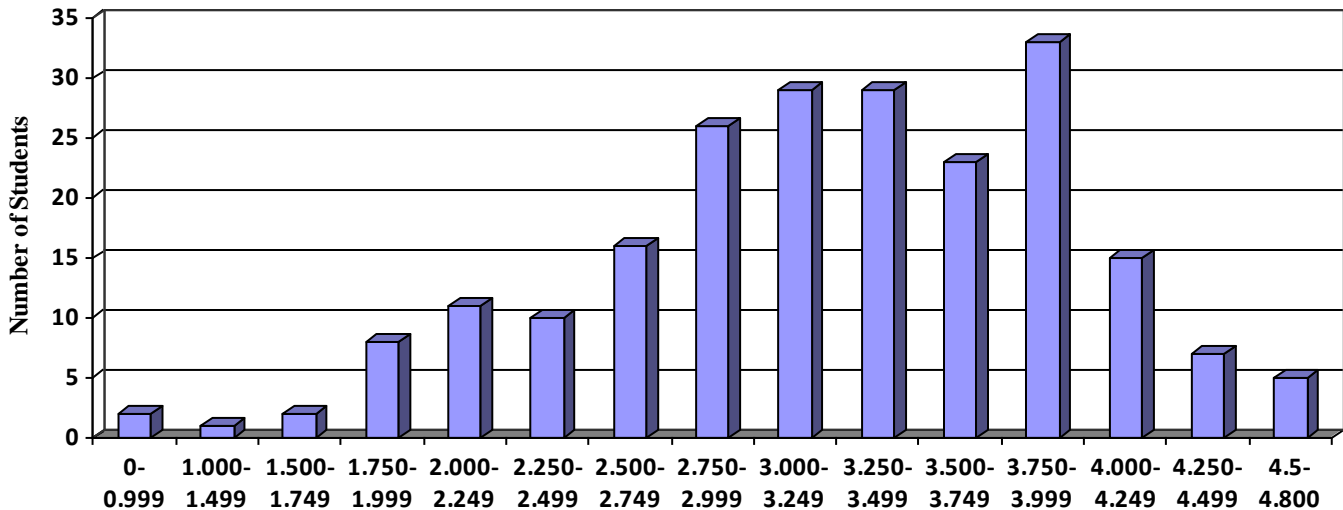
- ★ All final grades in academic and elective courses
- ★ Extra weight for honors and AP courses is awarded to students who earn a D or better
- ★ Transfer students are included in the decile rank based on only credits earned at B.H.S.
- ★ Courses taken as Pass/No Pass are not included in the GPA calculation

CLASS OF 2015 POST HIGH SCHOOL

ACTIVITIES:

Four Year College	84%
Two Year College	7%
Other	8%

**Brookfield High School
CLASS 2016
CEEB Code 070085**



Weighted GPA Ranges
217 Students Semester Included: 6