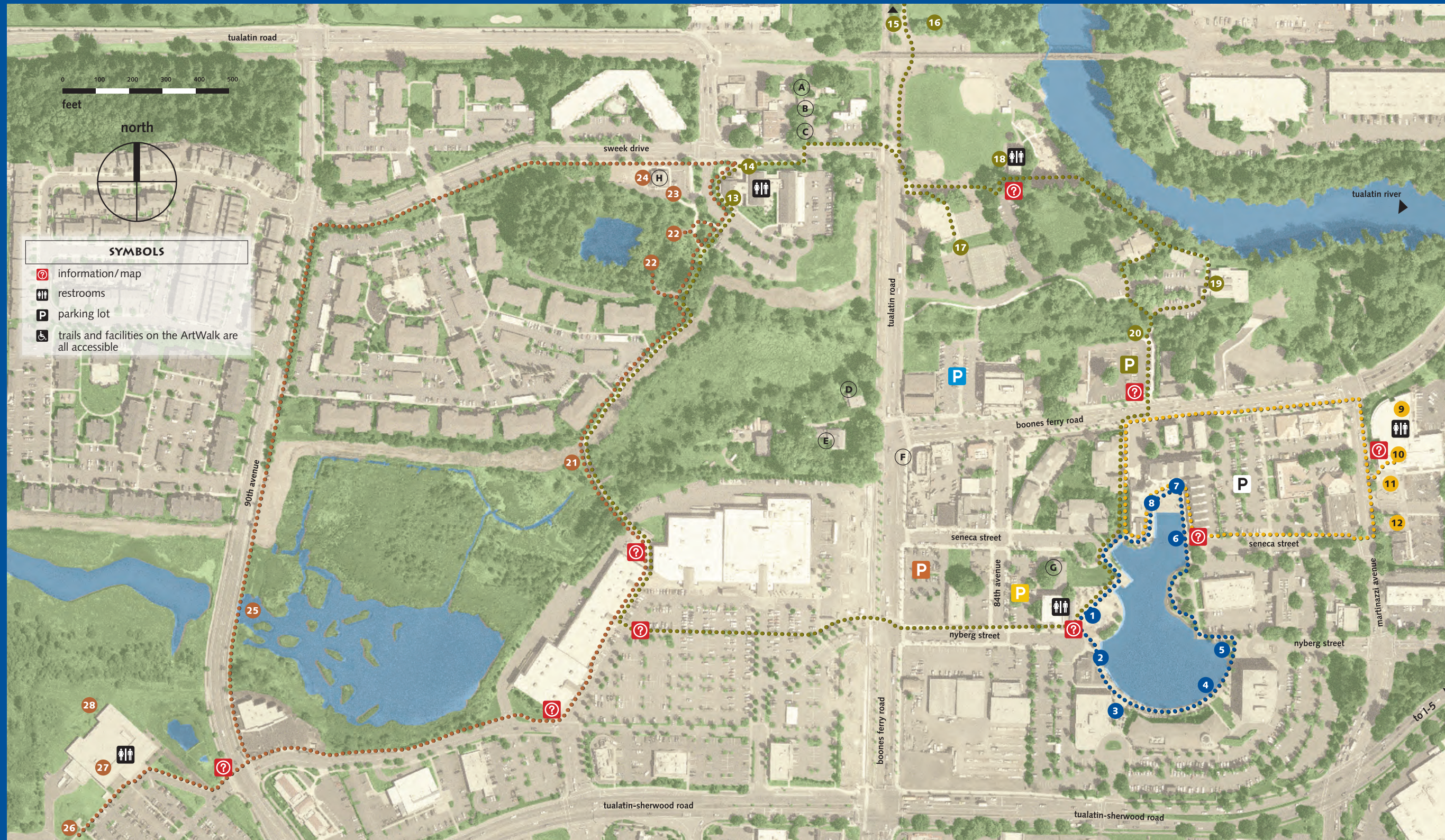




A self-guided tour of Tualatin's art, cultural and natural history



THE COMMONS LOOP 1/3 mile

1. Crawfish mosaic water fountain
2. Glass drinking fountain
3. Poetic history bands
4. Glass drinking fountain
5. *Sharing Ice Cream* bronze sculpture
6. Glass drinking fountain
7. *Spring Break* bronze sculpture & fountain
8. Glacial erratic

THE LIBRARY LOOP 1/2 mile

9. Library Art
10. Tualatin mastodon skeleton
11. *Storyteller* bronze sculpture
12. Council Building - Tualatin's *Visual Chronicle*

THE PARK LOOP 2.8 miles

13. Police - Tualatin's *Visual Chronicle*
14. Police bronze statue *The Protector*
15. Ki-a-Kuts bridge
16. Tualatin's prehistory interpretive
17. Tualatin skate park and mural
18. Interpretive panels - history of Tualatin
19. Juanita Pohl Center - Tualatin's *Visual Chronicle*
20. Hedges Creek wetlands

THE WETLAND LOOP 1.4 miles

21. Wetland trail
22. Sweek Pond overlook
23. Ice age erratic
24. Heritage Center
25. Wetland area
26. Kaiser Permanente's Poison Prevention Garden
27. Kaiser Permanente's art collection
28. Art in the Garden

HISTORIC STRUCTURES

- A. Little White House (8570 SW Cherokee Street)
- B. Wesch House (18400 SW 86th Avenue)
- C. Mack House (8575 SW Tualatin Road)
- D. Smith-Boone House (18815 SW Boones Ferry Road)
- E. Sweek House (18815 SW Boones Ferry Road)
- F. Robinson's Store (18810 SW Boones Ferry Road)
- G. Winona Grange (8340 SW Seneca Street)
- H. Heritage Center (8700 SW Sweek Drive)

TAKE A HIKE!

Welcome to the ArtWalk — a self-guided tour of Tualatin's diverse public art. Whether you are a local or a visitor, whether you have half an hour or an afternoon, the City of Tualatin invites you to get out in the fresh air, take a walk and discover public art!

FOLLOW THE SIGNS



The ArtWalk consists of several interconnected trails. Look for the maps like this to determine the route and watch for the colorful trail markers leading the way to an enjoyable adventure discovering Tualatin's art, natural and cultural history.



Tualatin's rich history comes alive in its old buildings. The alphabetical dots on the map represent historic buildings along the walk. The photograph to the right is the Winona Grange near the Commons (circa 1940).

The ArtWalk has been made possible, in part, through a generous contribution by Kaiser Permanente. Kaiser Permanente's Tualatin Medical Office is located on the Wetland Loop of the ArtWalk. Additional funding was provided by the Emery Zidell and H.A. "Andy" Andersen families (ZIAN, L.P.) Special thanks to the Tualatin Historical Society for assistance with natural and cultural interpretive signs.

THE COMMONS LOOP

The Commons Loop circles the Lake of the Commons. On the route, you will visit an interactive fountain, poetry etched in stone, and whimsical bronze sculptures. Even the glass drinking fountains are works of art!



This playful bronze sculpture commemorates the site of an old pet food factory.



This colorful tile mural depicting Tualatin's history, is located at the entrance to Community Park, along the Park Loop. The mural measures two feet high and thirty feet long.

THE PARK LOOP

The Park Loop is 2.8 miles. On this route, you will pass: Community Park along the Tualatin River, artwork at the Juanita Pohl Center, interpretive panels about Tualatin's history and the flooding of the river, a student-created skate park mural, a spur to the Kia-a-Kuts Bridge over the Tualatin River, artwork at the Police Services building, and a wetland trail with year-round waterfowl.



A trail spur at the south end of Community Park leads you to the Ki-a-Kuts Bike and Pedestrian Bridge that crosses the Tualatin River.

THE LIBRARY LOOP

The short Library Loop* leads you to the Tualatin Public Library, home to the Tualatin mastodon skeleton and several spectacular works of art. Visit the Council Building and City offices to see artwork from Tualatin's Visual Chronicle – a collection of art documenting the historical and current life of the Tualatin community.



Excavated in the 1960s by two Portland State students at a site near present-day Fred Meyer, this mastodon skeleton is an ice age treasure. The skeleton is carbon-dated at 11,300-years-old and is on display inside the library.



THE WETLAND LOOP

The Wetland Loop* brings you past Tualatin's Heritage Center where you can learn about Tualatin's rich and colorful history. Along the wetland trail, identify waterfowl year round. Visit Kaiser Permanente's collection of art and their garden devoted to the study of poisonous plants. In the outdoor space behind the building are colorful tiles featuring local plants and animals.



* Please check business hours before embarking, if you would like to see the indoor exhibits on these loops.



CITY OF TUALATIN
Community Services Department
18880 SW Martinazzi Avenue
Tualatin, Oregon 97062-7092
www.ci.tualatin.or.us