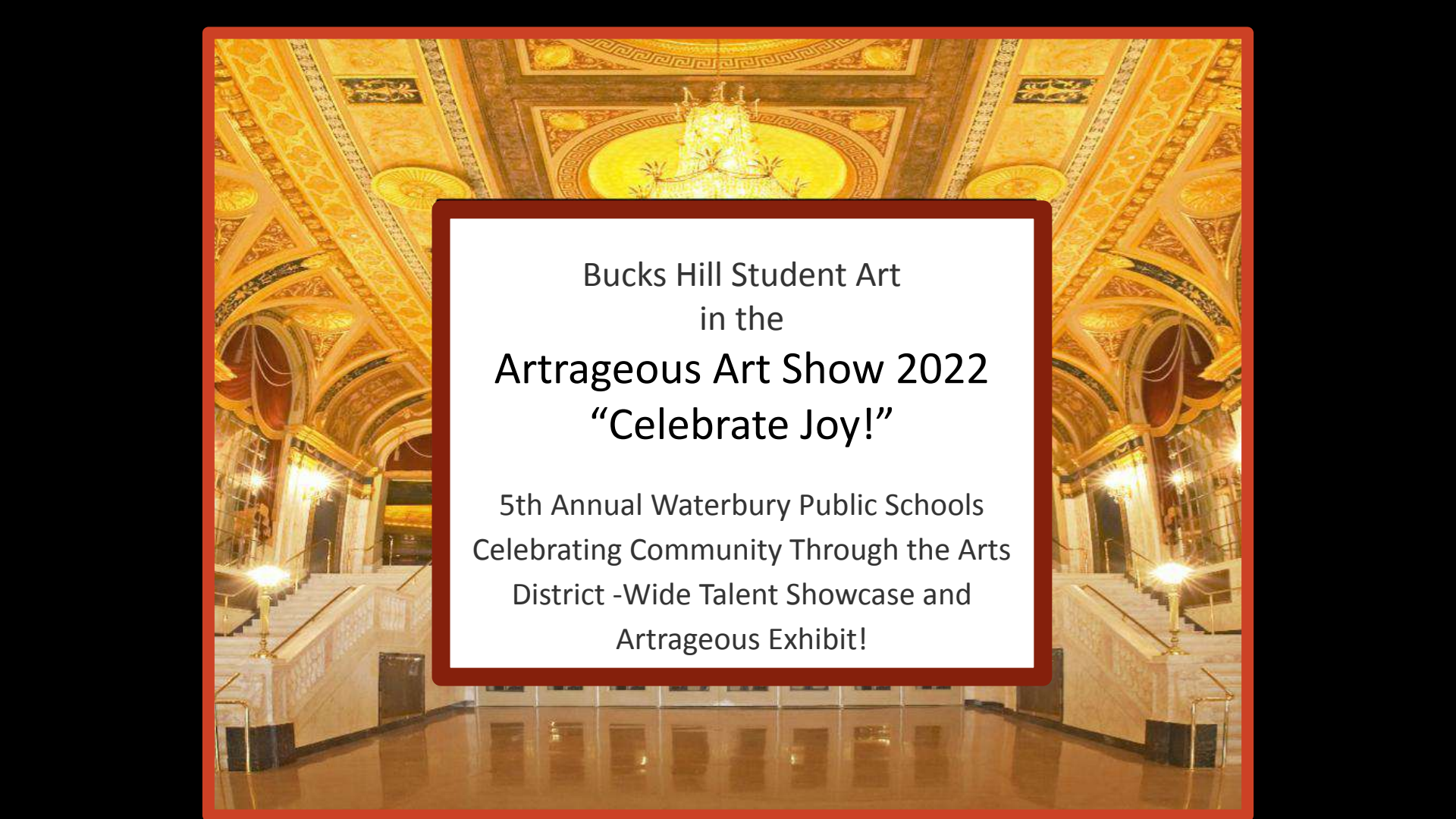


The background of the image is a photograph of the interior of the Waterbury Palace Theater. The space is grand and ornate, featuring a high ceiling with intricate gold-colored patterns and a central chandelier. Large, arched doorways and a wide staircase with white marble steps and gold railings are visible. The lighting is warm and dramatic, highlighting the architectural details. Overlaid on this image is a large red rectangle with a thin orange border. The red rectangle contains the event information in white text and is decorated with abstract blue and white brushstrokes and circles in the corners.

# ARTRAGEOUS 2022

You're invited to view the district wide art show on  
Tuesday March 8, 2022 from 5:30-7:00PM  
at the  
Waterbury Palace Theater  
100 E Main St, Waterbury, CT 06702

The background image shows a grand, ornate interior space, likely a school lobby or a public building. The ceiling is highly decorated with gold-colored patterns and a large, multi-tiered chandelier hangs from the center. The walls are also adorned with intricate designs. In the foreground, there are two sets of wide, light-colored stone stairs with gold railings, leading up to a higher level. The floor is polished and reflects the lights and architectural details.

Bucks Hill Student Art  
in the  
**Artrageous Art Show 2022**  
**“Celebrate Joy!”**

5th Annual Waterbury Public Schools  
Celebrating Community Through the Arts  
District -Wide Talent Showcase and  
Artrageous Exhibit!





Julian Ross  
Sunset Cityscape  
CBL  
Bucks Hill Elementary School



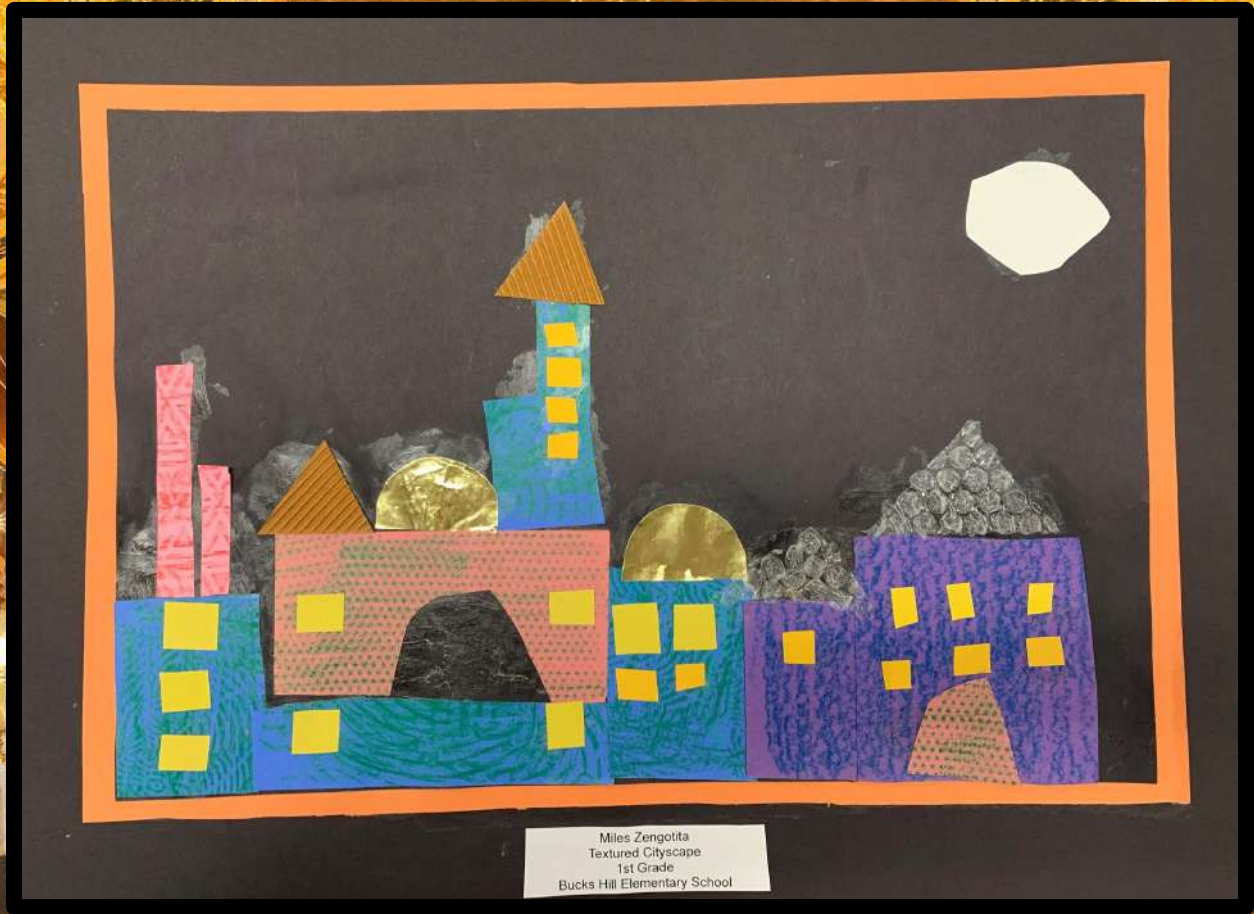
Jimena Sosa-Vargas  
African Mask Collage  
CBL  
Bucks Hill Elementary School





Nikolai Garcia  
Native American Blanket Painting  
Kindergarten  
Bucks Hill Elementary School





Miles Zengotta  
Textured Cityscape  
1st Grade  
Bucks Hill Elementary School



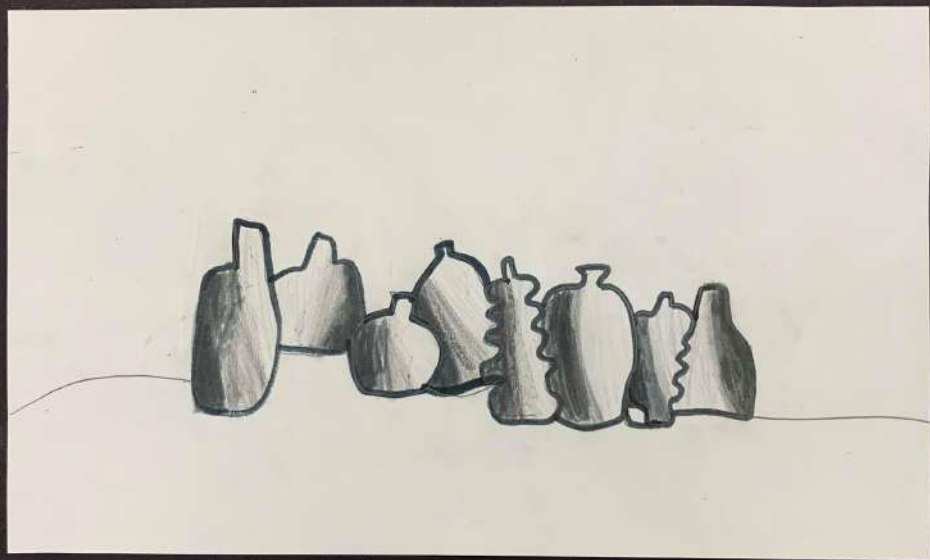


Mia Discua-Jimenez  
Red Cardinal on a Snowy Day  
2nd Grade  
Bucks Hill Elementary School



Liani Mendez  
Autumn Leaves  
3rd Grade  
Bucks Hill Elementary School





Alejandra Montenegro  
Black and White Shaded Still Life  
4th Grade  
Bucks Hill Elementary School



Aniyah Martinez  
Warm and Cool Weaving  
4th Grade  
Bucks Hill Elementary School





Yetzal Fernandez-Santiago  
Reindeer with Omale Designs  
4th Grade  
Bucks Hill Elementary School



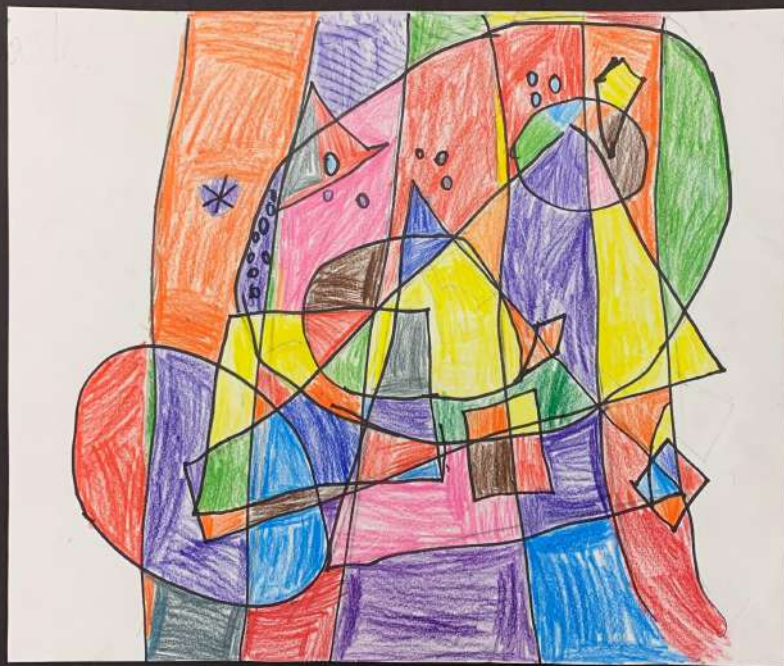


Danna Cornielle-Castaneda  
Still Life of Decorative Vases  
4th Grade  
Bucks Hill Elementary School





Ledziel Matos-Berrios  
Floating Orbs Abstraction  
5th Grade  
Bucks Hill Elementary School



Yaudiel Solano-Velazquez  
Abstract Fun  
5th Grade  
Bucks Hill Elementary School



The image shows a highly ornate, classical-style interior, likely a grand hall or lobby. The ceiling is the most striking feature, with intricate gold leaf decorations, including circular medallions and a large, central chandelier. The walls are also decorated with gold and dark wood paneling. In the foreground, there are two sets of wide, marble-clad stairs leading up to a second level. The floor is highly polished and reflects the lights and architecture. A large, semi-transparent orange rectangle with a dark red border is centered over the image, containing the text "The End".

**The End**