

Grade 3 – Assignment for week of (3/30 to 4/3)

Structures of Life: Meet the Land Snail

The last few weeks we have learned how organisms in the **Plant Kingdom** make seeds to reproduce. The next few weeks we will study living things in the **Animal Kingdom**.

Science Vocabulary:

Land Snail:	Slow-moving land animal with a spiral shell
Mollusks:	Animals with a hard inner or outer shell
Gastropods:	Class of Mollusks: move with a muscular ventral foot
Eyespots:	Small spots on ends of large tentacles; sense light
Tentacles:	Tall, thin parts animals use for feeling

Task #1:

Choose (3) of the science vocabulary words, and create word art. Word art is where you use the vocabulary word and drawing to explain what the word means.

See below an example for the word **egg**:



Read the next page entitled, "Meet the Land Snail."

Task #2:

In Part 1, use the word box and your vocabulary to label the diagram of the land snail filling in the missing words.

Task #3:

In Part 2, read the information about the land snail. Share with a parent or guardian, or think to yourself what you find interesting about snails.

Name _____

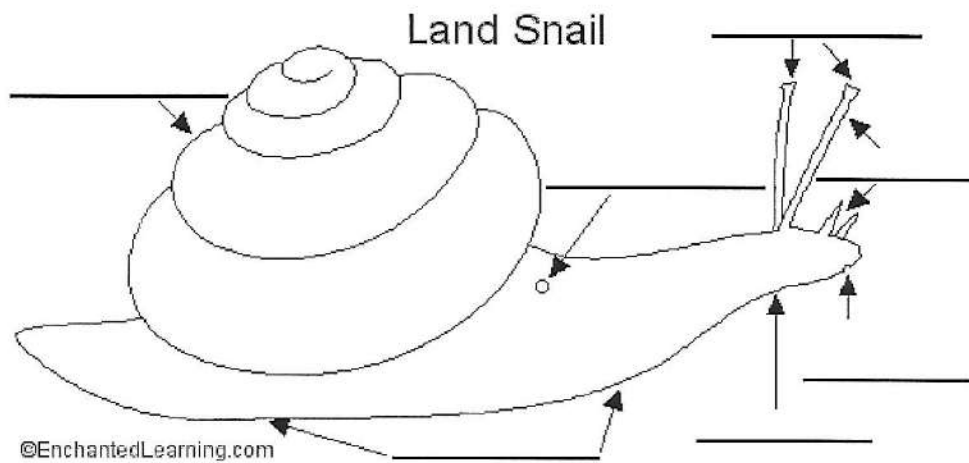
Meet the Land Snail

Date _____

Part 1 ➤

- ⚙ Use the word box to label the anatomy of the snail.

Eyespots	Foot	Shell	Head
Mouth	Respiratory Pore	Tentacles	



Part 2 ➤

- ⚙ Read and discuss the following facts about the land snail.
 - ⇒ Snails move by crawling on their large, flat foot. A gland makes mucus, a slimy fluid that helps the snail slide. The garden snail is the slowest moving animal. Humans walk at a speed of about (2) miles per hour. Snails travel about (3/100's) of a mile per hour.
 - ⇒ The smallest snail is less than a millimeter long. The largest water snail is the Australian Marine Trumpet Snail which is about (77) centimeters long. The largest land snail is the Giant African Snail which is about (39) centimeters long and weighs about (900) grams.
 - ⇒ The snail has many predators. Birds, fish, frogs, snakes, turtles, beetles, and even people eat snails for food.