

SKYLINE ELEMENTARY SCHOOL

Solana Beach School District
Phase 2 & 3

INTRODUCTION

PLANTING DESIGN - Site Plan



**COMPOSITIONAL
DRIFTS**

BOLD

BRIGHT

COLORFUL

PLAYFUL

SEASONAL

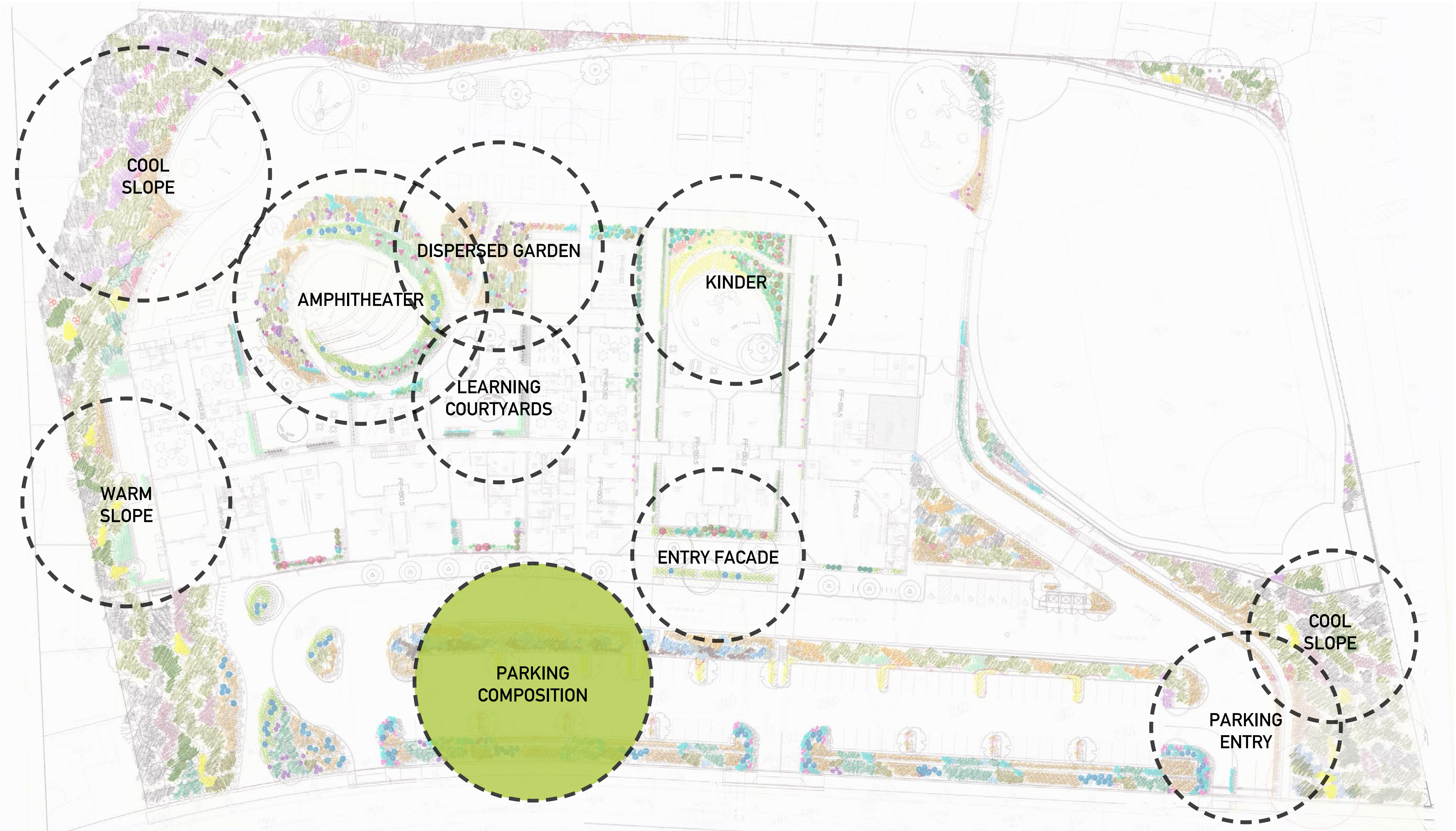
SOFT

TEXTURED

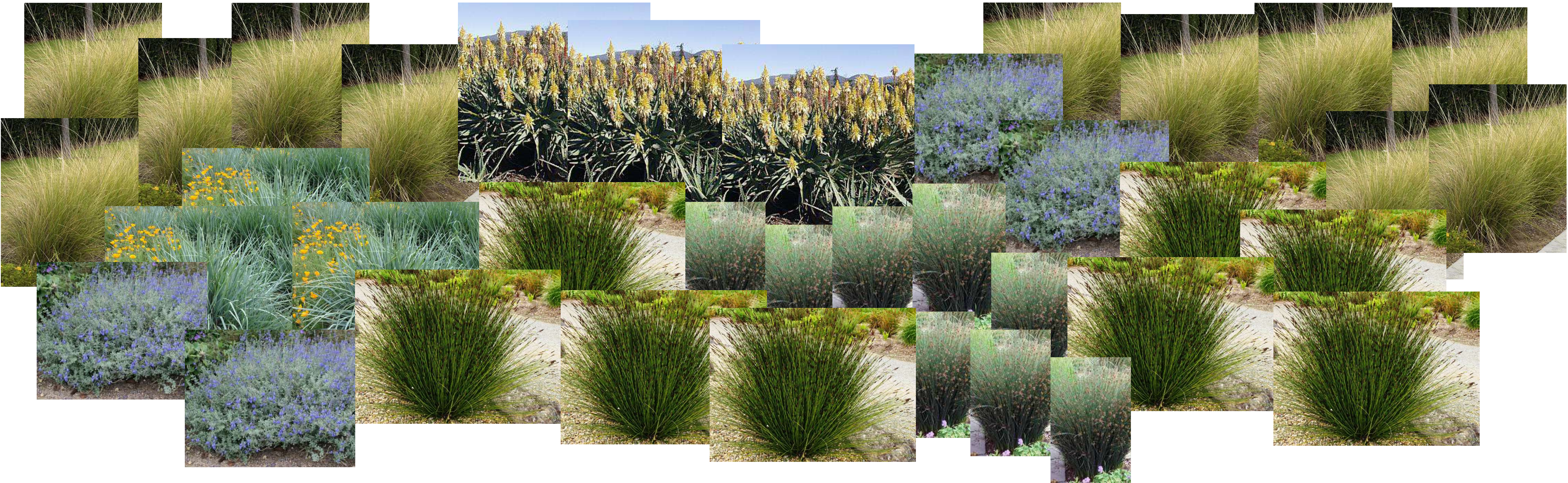
WELCOMING

ACCENT

PLANTING DESIGN - Planting Zones



PLANTING DESIGN - Plant Palette



- SPECIES:**
MUHLENBERGIA RIGENS
DIETES GRANDIFLORA 'VARIEGATA'
CHONDROPETALUM TECTORUM
JUNCUS PATENS
SALVIA CHAMAEDRYOIDES
ALOE 'YELLOW TORCH'
AGAVE ATTENUATA 'NOVA'
AEONIUM 'JOLLY GREEN'
ROSMARINUS OFFICINALIS
LEPTOSPERMUM LAEVIGATUM 'REEVESII'



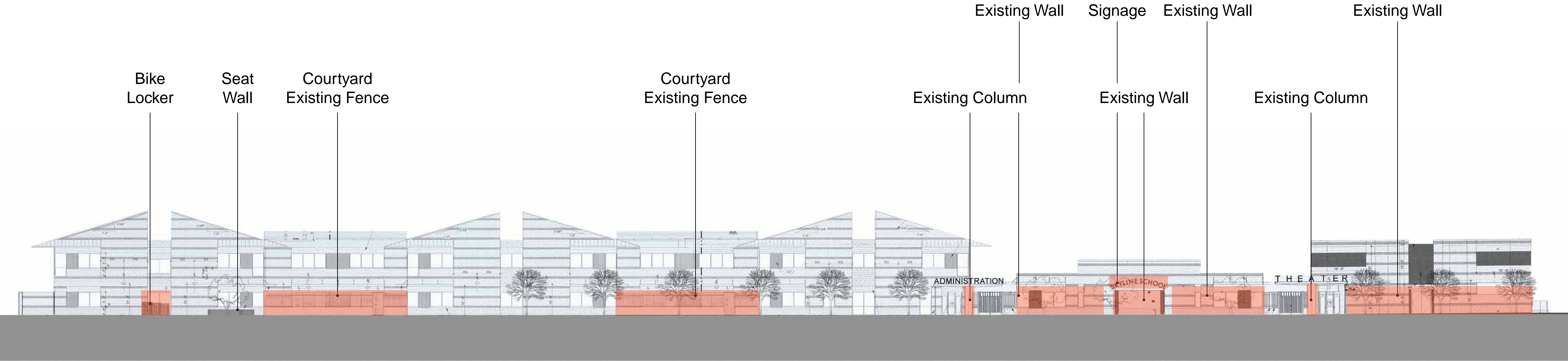
EXISTING CONDITION - Plan View



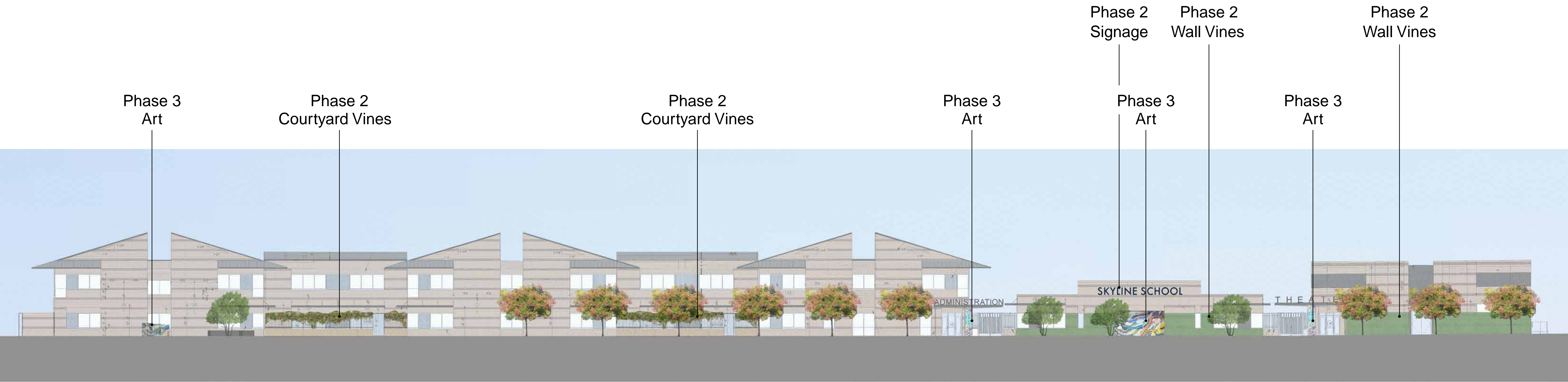
EXISTING CONDITIONS - Site Photos



EXISTING CONDITIONS AND OPPORTUNITIES



OPPORTUNITIES - Overall South Elevation



Architectural elevation drawing of a building facade. The drawing includes various dimensions and labels. Two trees with pink and yellow foliage are positioned in front of the building. A fence runs along the base of the building. The building has a mix of brick and stone textures. Labels include "Distictis buccinatoria" pointing to the trees, and various dimensions like "10'-0\"", "9'-4\"", "1'-0\"", and "3 5/8\"".

PHASE 2: Courtyard Vines

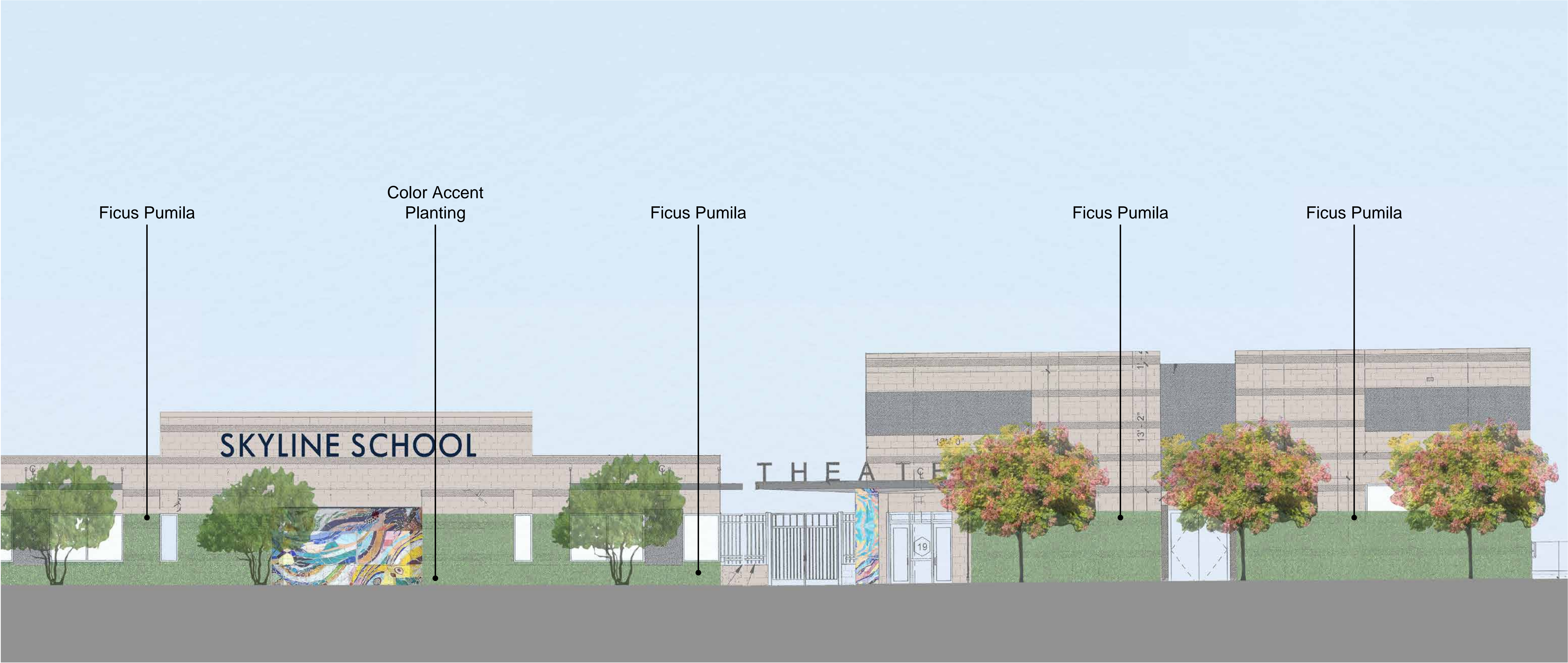


Distictis buccinatoria, Red Trumpet Vine



Solandra maxima, Cup of Gold Vine

PHASE 2: Entry Facade Planting



PHASE 2: Wall Vines



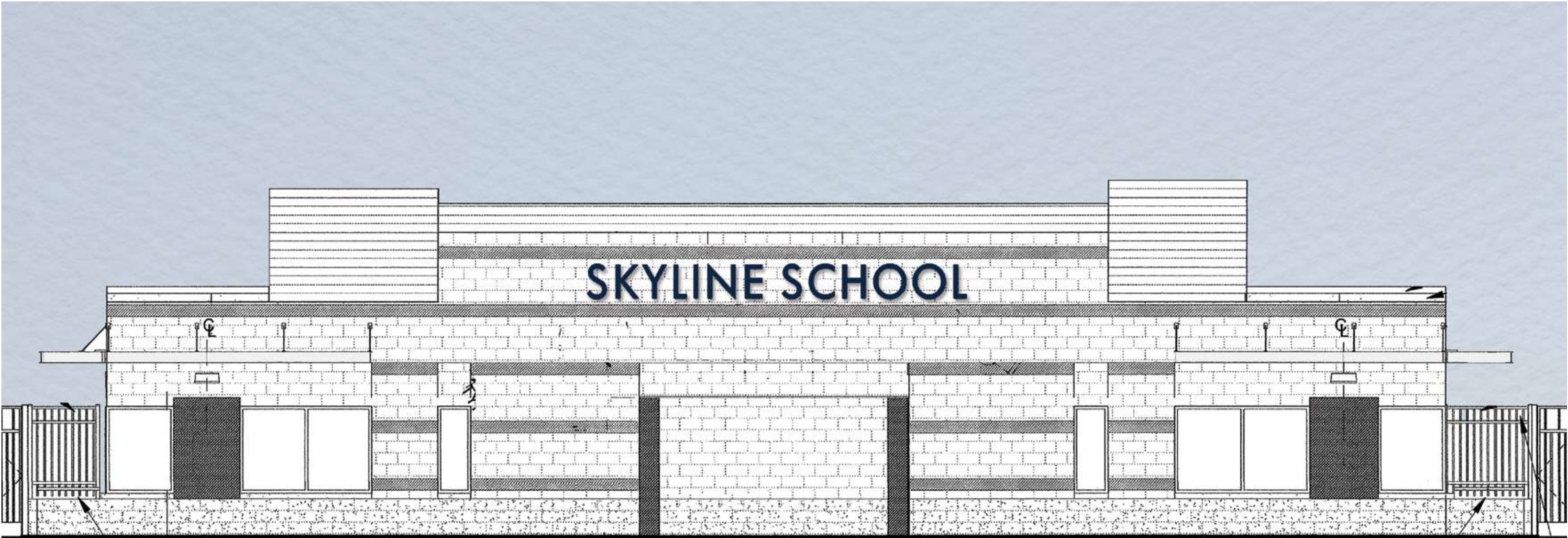
Ficus pumila, Creeping Fig

PHASE 2: Color Accent Planting

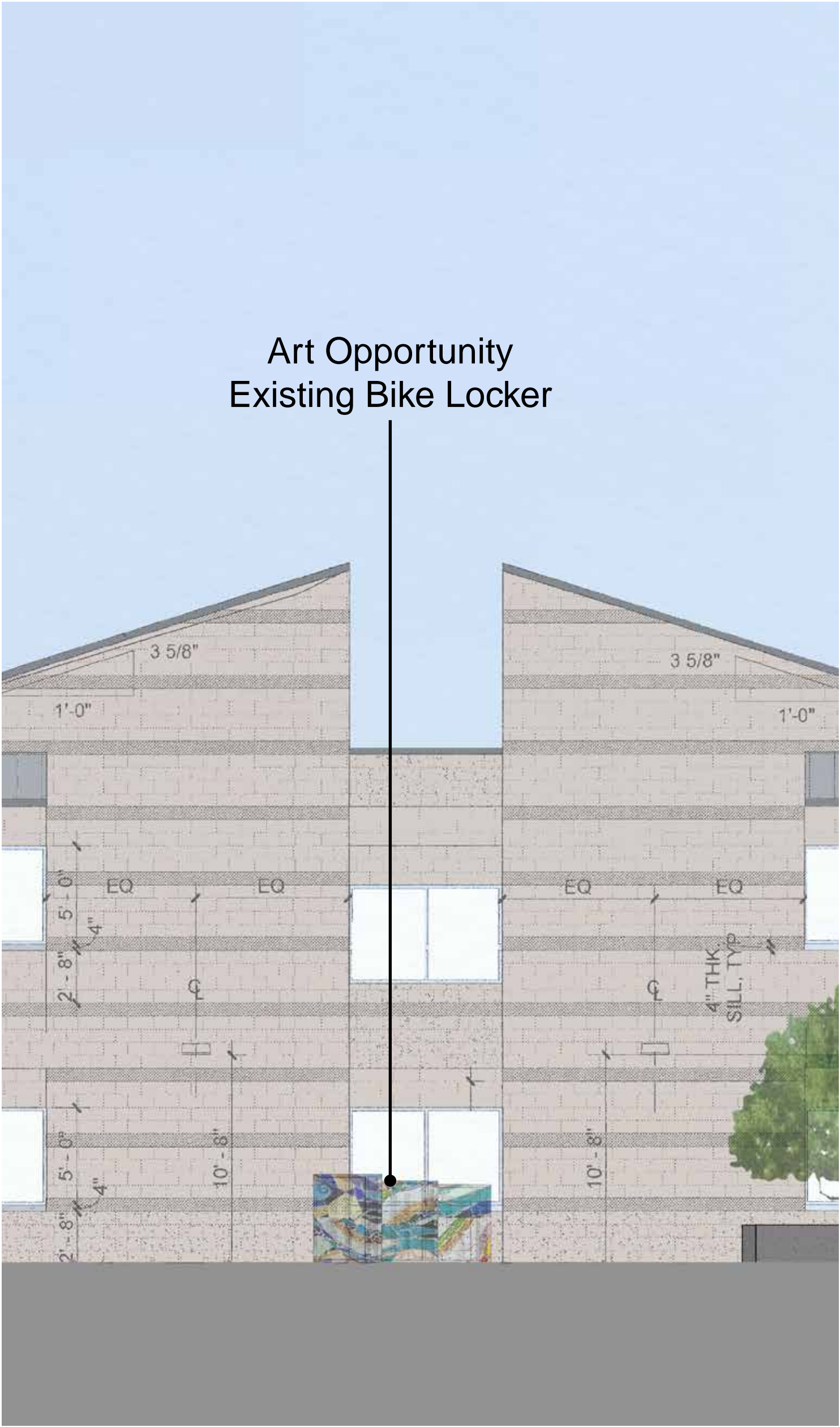


Aeonium 'Sunburst'
Aloe petricola
Leucadendron 'Safari Goldstrike'
Leucospermum 'Yellow Bird'
Salvia chamaedryoides

PHASE 2: Signage



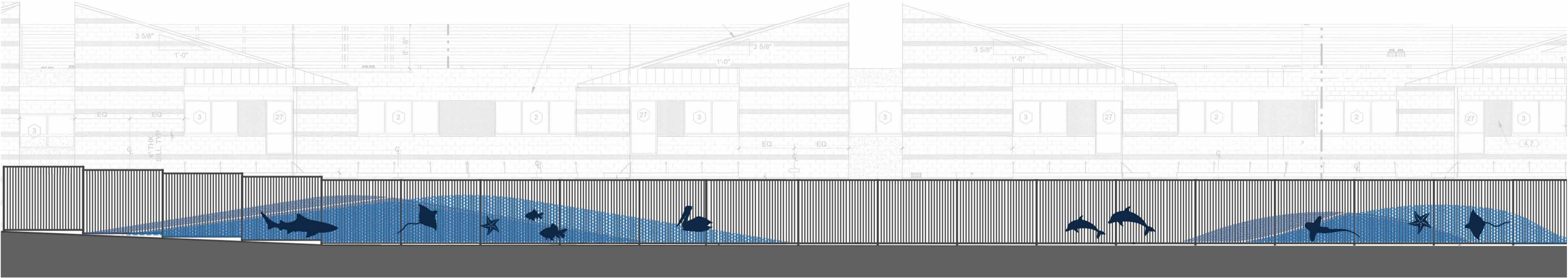
PHASE 3: Art Opportunities and Fence



PHASE 3: Art Opportunities



PHASE 3: Fence



PHASE 2 COST SUMMARY

<i>Description</i>	<i>Location</i>	<i>Quantity/ Description</i>	<i>Estimated cost</i>
PLANTING			
Wall vines	MPR and Kindergarten facades	(22) 5 gallon Ficus pumila	792.00
Courtyard vines	Learning Courtyards	(6) 15 gallon Distictus buccinatoria	816.00
Additional color accent allowance	MPR and Kindergarten facades OR parking OR streetfront	(50) 5 gallon various species	1,800.00
		SUBTOTAL	3,408.00
SIGNAGE (3 options)			
Option 1 Pin-mount only	Kindergarten facade	Painted aluminum, set 2" off building face	8,160.00
Option 2 Pin-mount with lighting	Kindergarten facade	Painted aluminum, set 2" off building face, LED strip lighting in back of channel letters	14,460.00
Option 3 Pin-mount with lighting and silhouette letters	Kindergarten facade	Painted aluminum, set 2" off building face, LED strip lighting in back of channel letters, painted silhouette letters mounted to building	22,150.00
Wall Repair	Kindergarten facade	Patch holes in CMU and/or selectively replace block face as required at old signage location	TBD

THANK YOU!