

GEORGETOWN
Wet Weather Treatment Station



King County

Protecting Our Waters

Doing our part on rainy days

1% for Art Program

ADVANCING COMMUNITY THROUGH CULTURE



ARTS HERITAGE PRESERVATION PUBLIC ART



Cyrus Khambatta Dance. Photo by Charlie Schuck.

ARTS // bringing creativity to the center of everyday life



Duwamish Raven Canoe & SeaFair Pirates, 2012. Photo by Steve Shay.



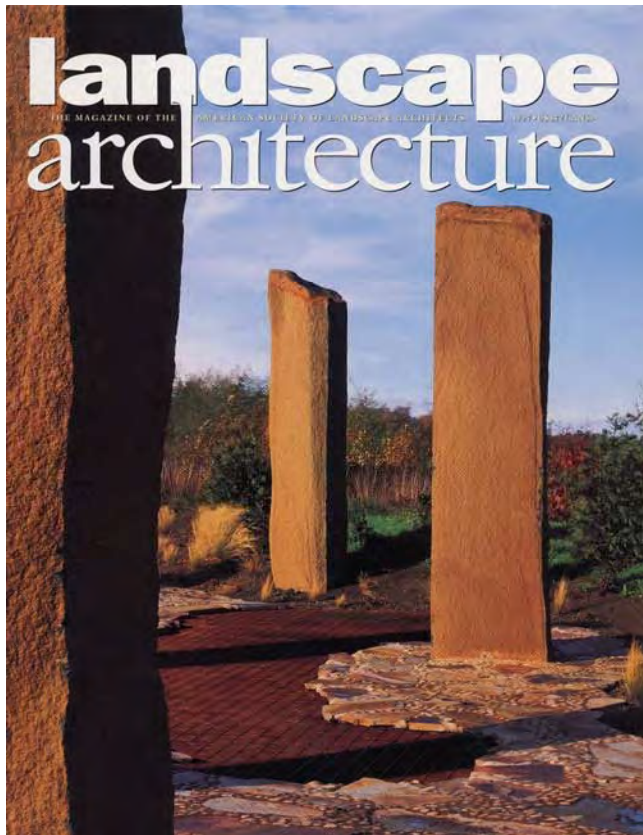
Robert Morris, Johnson Pit #30, 1979, Earth, grass, King County Public Art Collection, Photo by Spike Mafford

PRESERVATION // conserving community in the face of change

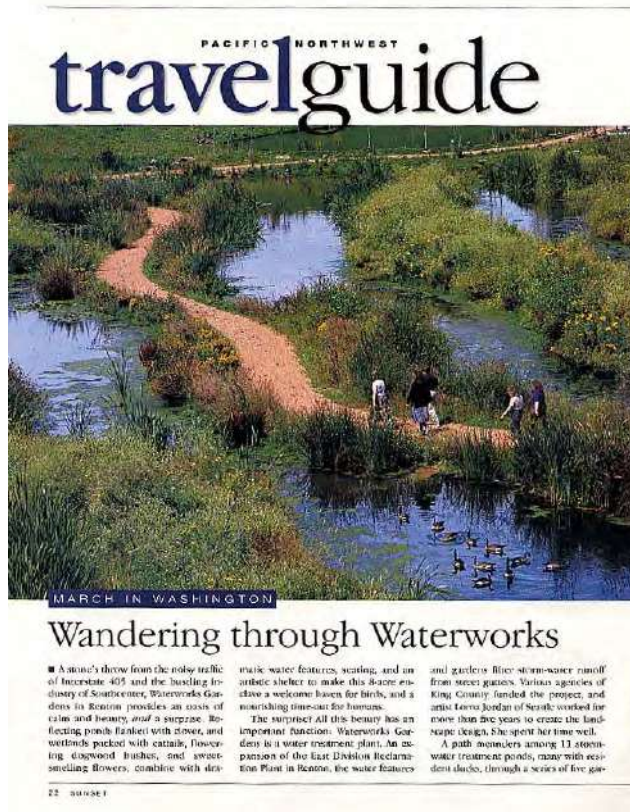


Christian Moeller, *Newsreaders*, 2006, King County Public Art Collection. Photo by YaM Brand.

PUBLIC ART // extraordinary spaces, everyday places



© Lorna Jordan, 1997, *Waterworks Gardens*



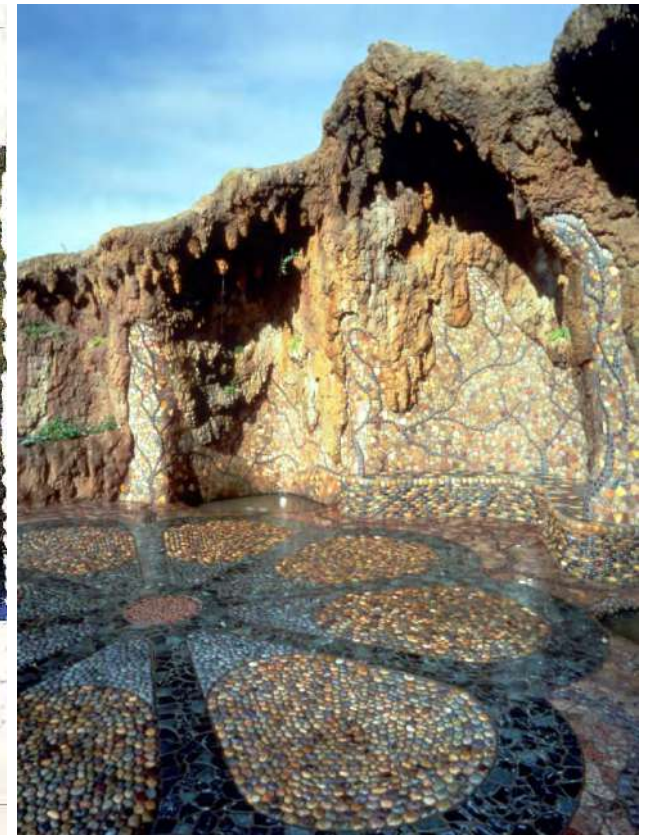
MARCH IN WASHINGTON

Wandering through Waterworks

■ A stone's throw from the noisy traffic of Interstate 405 and the bustling industry of Southcenter, Waterworks Gardens in Renton provides an oasis of calm and beauty, and a surprise. Reflecting ponds flanked with trees, and wetlands packed with cattails, flowering dogwood bushes, and sweet-smelling flowers, combine with dra-

matic water features, seating, and an artistic shelter to make this scene evolve a welcome haven for birds, and a nourishing time-out for humans. The surprise? All this beauty has an important function: Waterworks Gardens is a water treatment plant. An expansion of the late Division Reclamation Plant in Renton, the water features

and gardens filter stormwater runoff from street gutters. Various agencies of King County funded the project, and artist Lorna Jordan of Seattle worked for more than five years to create the landscape design. She spent her time well. A path meanders among 13 stormwater treatment ponds, many with resident ducks, through a series of five gar-





© Ellen Sollod, *Collection and Transformation*, 2011. Detail photo courtesy of the artist. Site photo © Benjamin Benschneider.



© Cris Bruch, South Branch, North Fork & Puddles, 2011, Detail photos by Stephen Fandrich. Site photo © Benjamin Benschneider.





© Don Fels, *Water Plant*, 2010, South Plant, Renton

ART & INFRASTRUCTURE // artists tell the story of water



ART & INFRASTRUCTURE // artists tell the story of water



BRIGHTWATER // artists tell the story of water

PROCESS

// 1% of the cost of design and construction of above ground structures is used to support the public art program.

// Serves an educational purpose.

// Beautifies an employee workspace, customer service area, and increases employee productivity.

PROCESS

// decision maker and final approval body for artwork in King County capital projects

// artists, design professionals, curator

// provides design review and approval for artists' concepts

PROCESS

The screenshot shows the Gallery4Culture website homepage. At the top, there is a navigation bar with the logo '4 CULTURE' and the tagline 'Advancing Community through Culture'. The main navigation menu includes 'OPPORTUNITIES', 'OUR PROGRAMS', 'WHO WE ARE', and 'CONSULTING / RESOURCES'. A pink arrow points from the 'PROCESS' header to the 'OPPORTUNITIES' menu item.

The main content area features a featured article titled 'Gallery4Culture: Christopher Buening explores his Midwestern roots' by Esther Luttkhuizen, dated June 4, 2015. The article includes a photograph of colorful, mixed-media art installations. Below this, there is a section for 'NEWS FROM 4CULTURE' featuring an article titled 'Otieno Terry on Creative Justice' by Jordan Howland, dated June 17, 2015. A pink arrow points from the 'Creative Justice' text in the article to the 'CREATIVE JUSTICE' logo in the sidebar.

The sidebar on the right contains several sections: 'UPCOMING DEADLINES' with a date of 6/24, the 'CREATIVE JUSTICE' logo, a 'JOIN EMAIL LIST' button, and a 'POETRY get your' button.

PROCESS

// 4Culture appoints a selection panel to review applications for each project

// Large-scale projects often have more than one selection panel

PLANNING



SYSTEM OVERVIEW : NORTH AREA

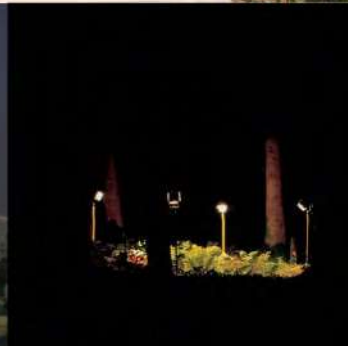
PLANNING

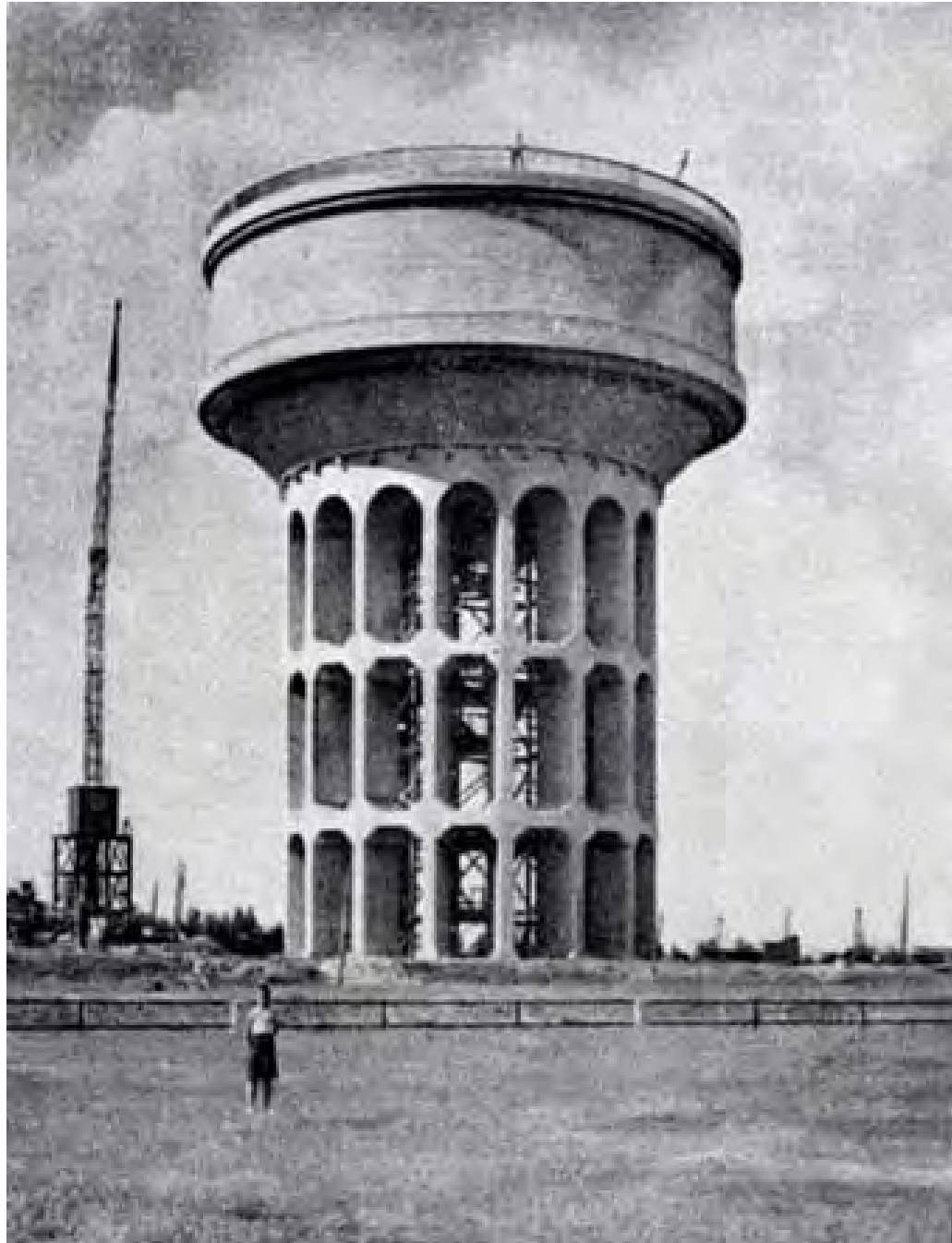


SYSTEM OVERVIEW : SOUTH AREA

PLANNING

- \\ Analyze the opportunities and constraints presented by projects and sub-projects;
- \\ Examine how artwork can express independent projects as part of an interconnected system;
- \\
- \\ Propose implementation strategy and timelines for other artists' work;











Alliam 2240 02

ch?

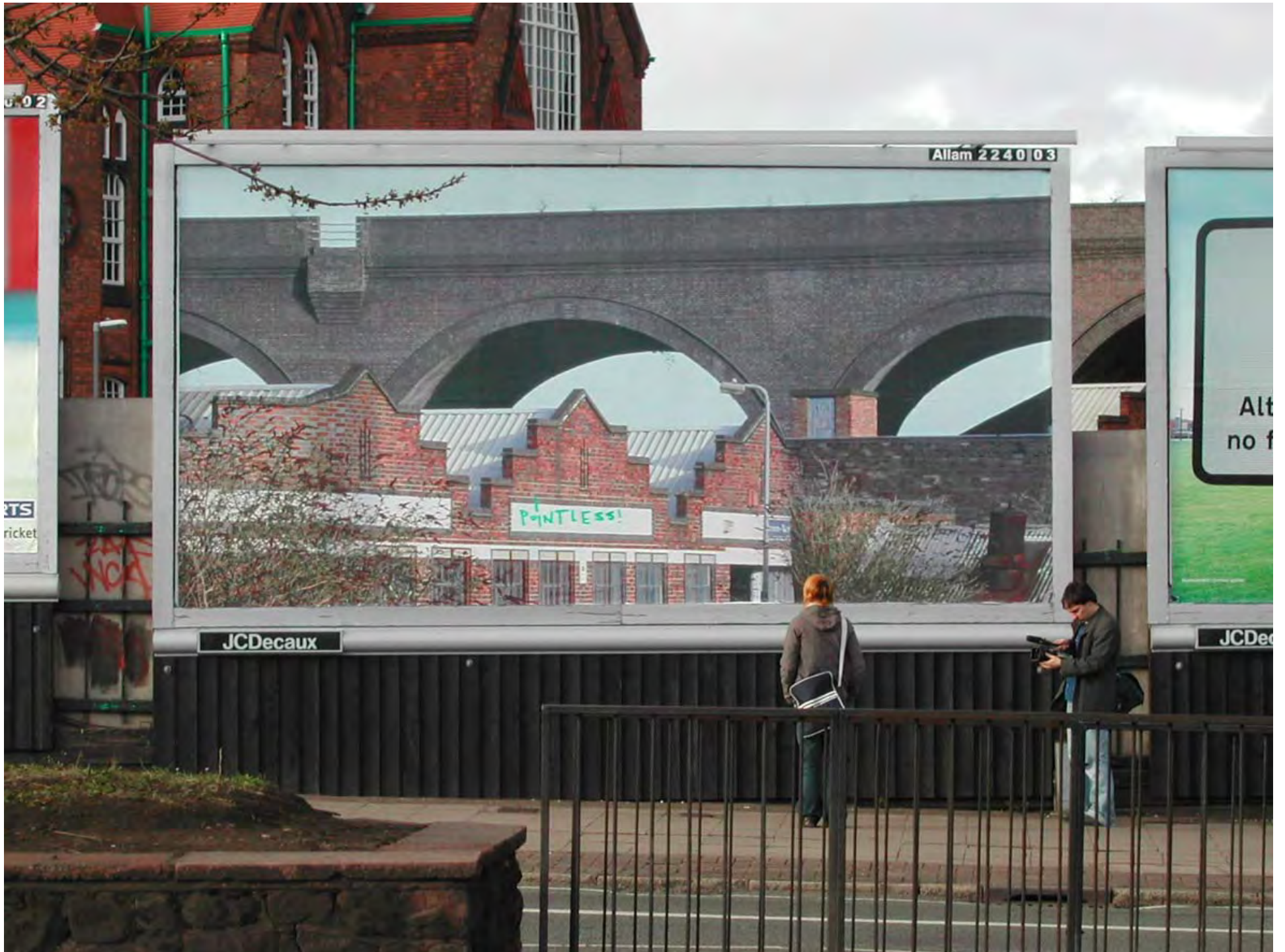
SKY SPORTS
International Cricket

Alliam 2240 03

JCDecaux

Although th
no film in it

JCDecaux



































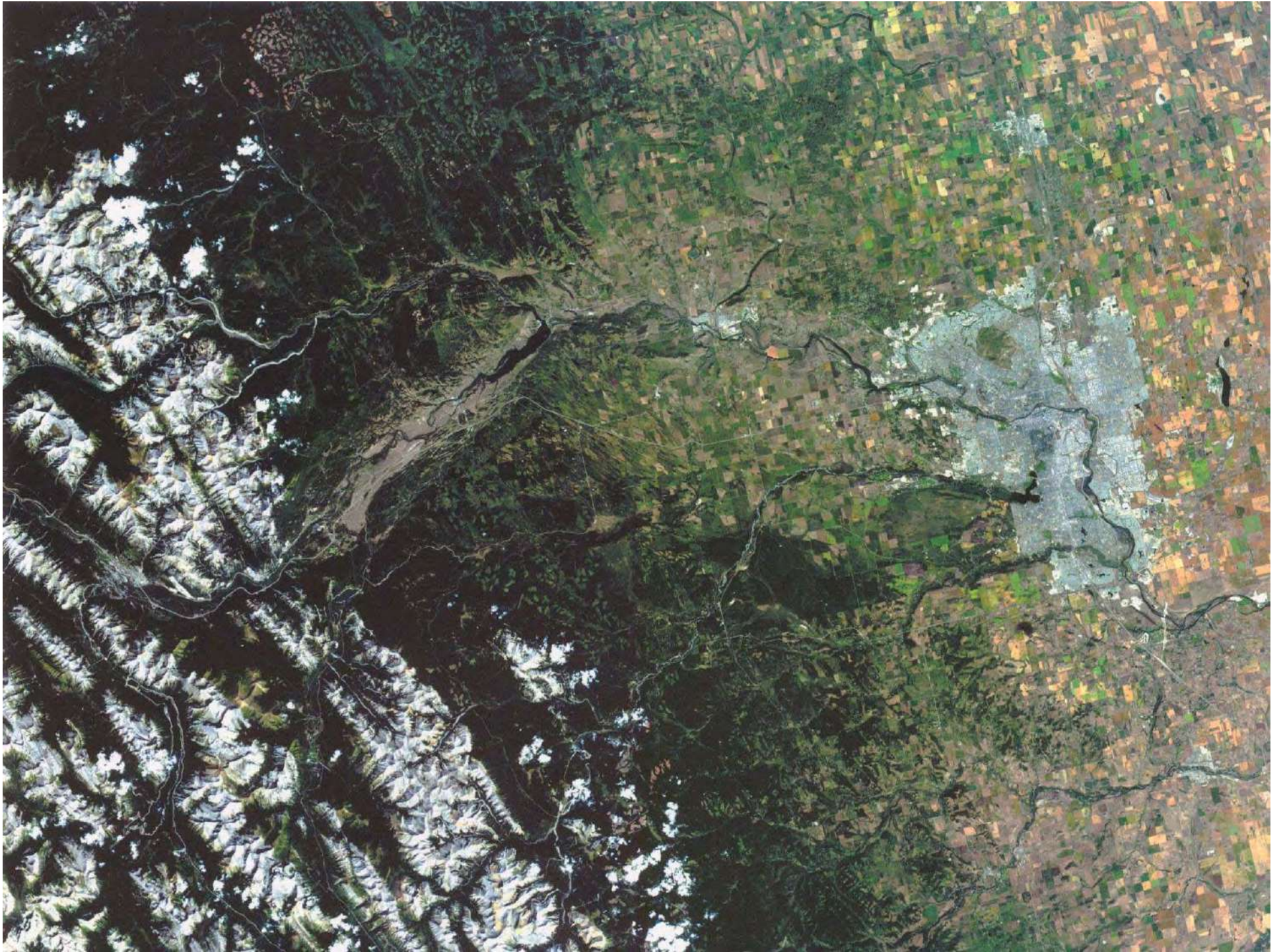














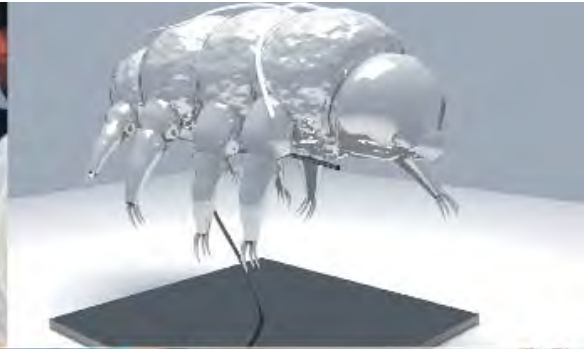
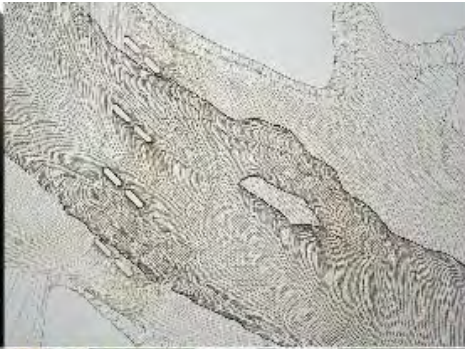
















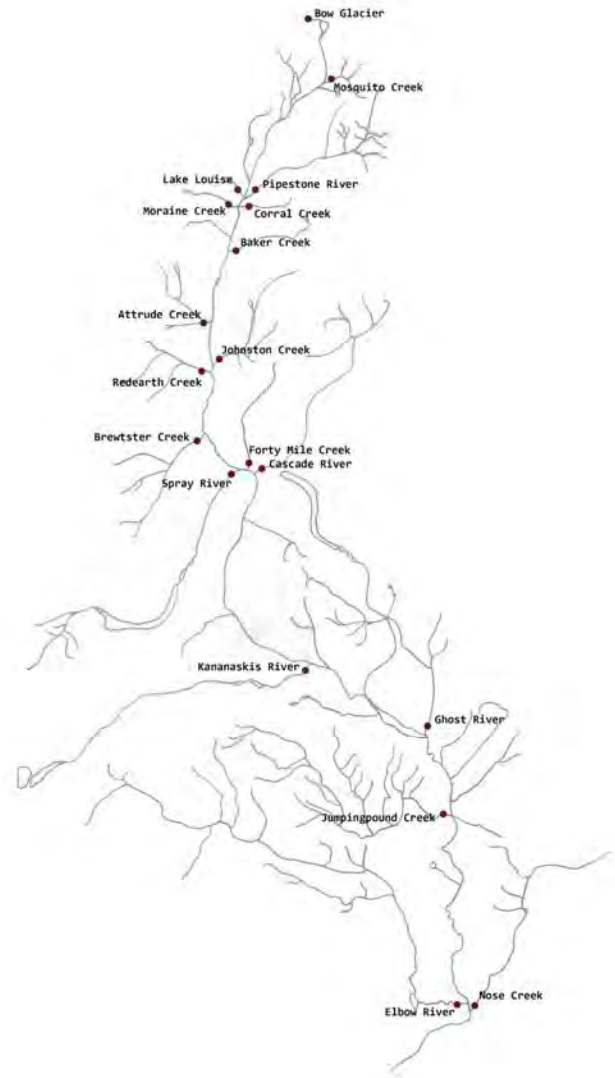


WATERSHED+ RESIDENCIES

at Ralph Klein Park

Photo: Charles Hope



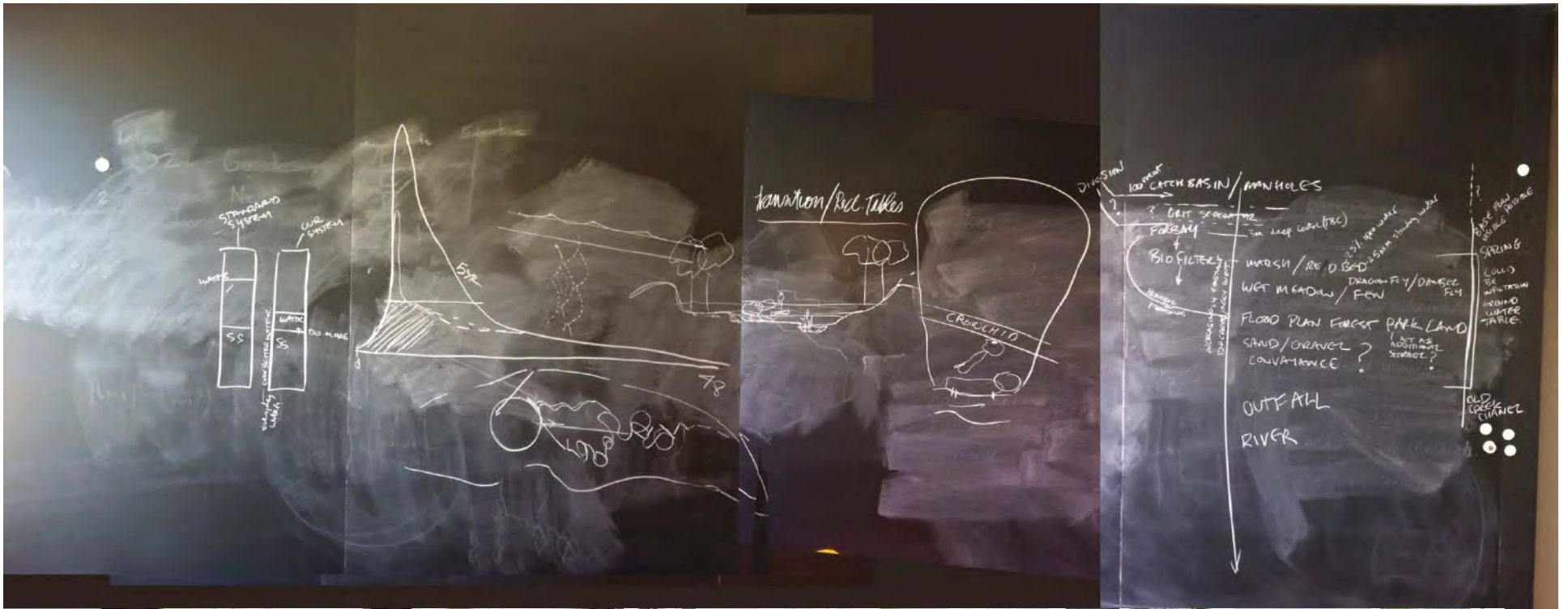


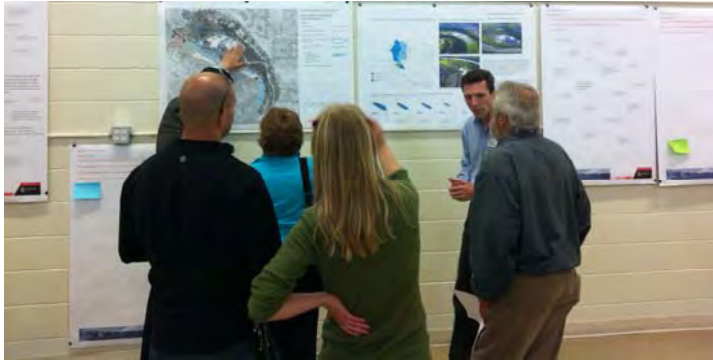




East Bowmont Park







2013
MAYOR'S
URBAN
DESIGN
AWARDS



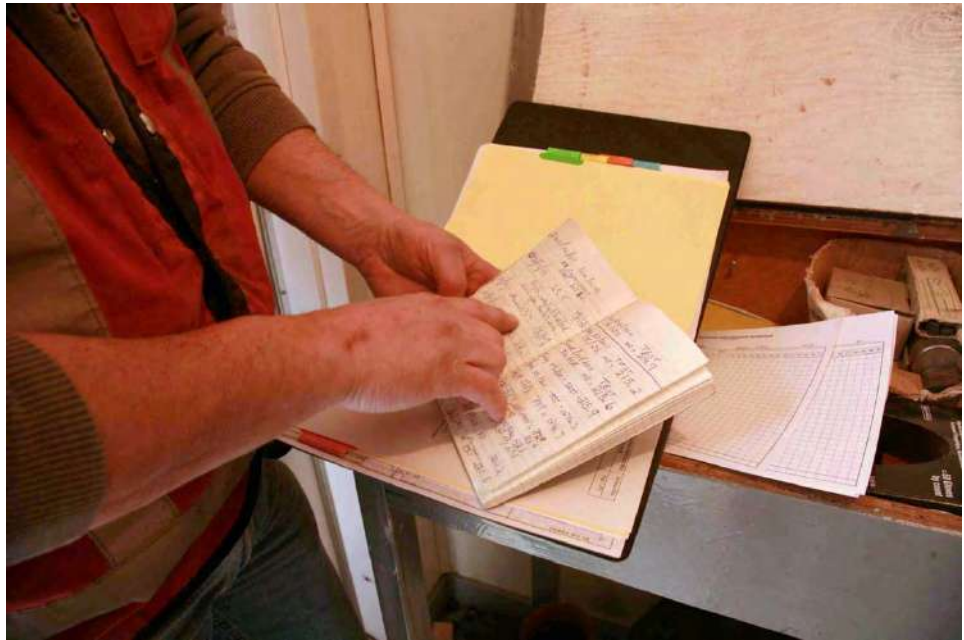


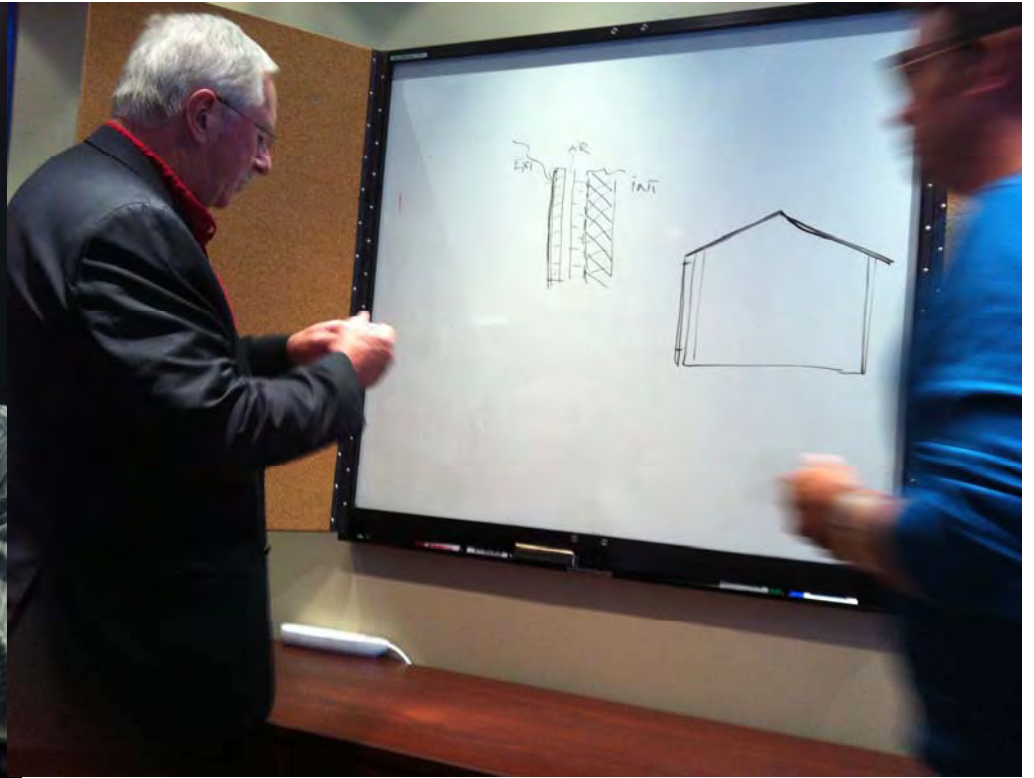


Forest Lawn Lift Station

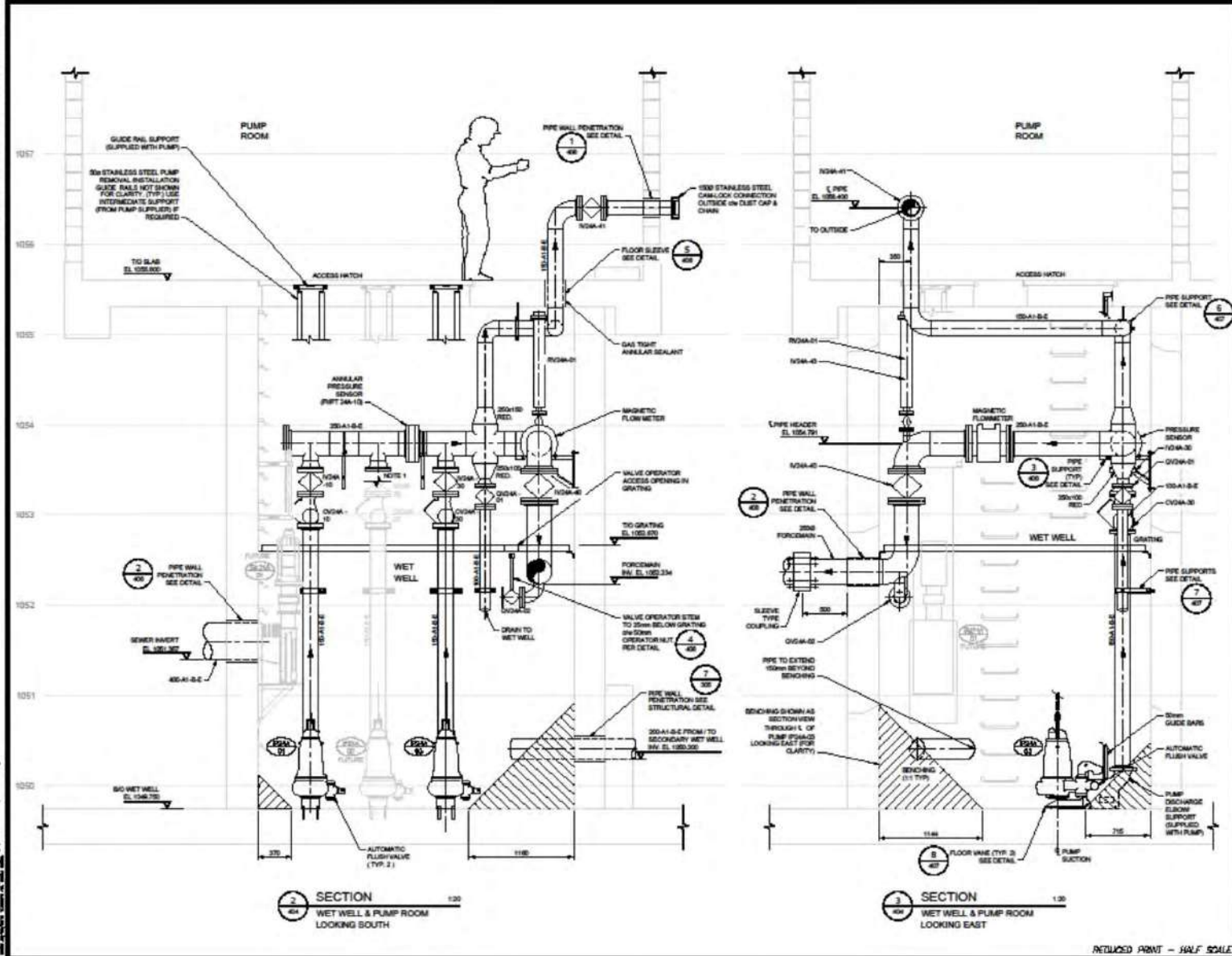


FOREST LAWN
MOUNTAIN VIEW CENTER
100 N. 100 W.
EMERGENCY ALARMS
CALL 911





The drawings on this sheet are the property of Associated Engineering Inc. and shall not be reproduced, stored in a retrieval system, or transmitted in any form or by any means, electronic, mechanical, photocopying, recording, or by any information storage and retrieval system, without the prior written permission of Associated Engineering Inc.



NOTES:

- BLIND FLANGE IN PLACE UNTIL FUTURE PIPING FOR PUMP #30A-02 IS INSTALLED.
- REFER TO DWG. 405 FOR LEVEL BILLS AND ULTRASONIC SET POINT ELEVATIONS.

REVISIONS			
NO.	Y/M/D	ENG. BY	SUBJECT
1	2010-01-01	AK	ISSUED FOR CLARITY REVISION
2	2010-01-01	AK	ISSUED FOR CLARITY REVISION
3	2010-01-01	AK	ISSUED FOR P&ID CORRECTION
4	2010-01-01	AK	ISSUED FOR P&ID CORRECTION

SCALE	AS SHOWN
PROJECT NO.	2010-0004
DRAWN	S. ROBERTS
DESIGNED	J. WHITE
CHECKED	W. WALLEY
APPROVED	S. CHEPCLAR
DATE	



FOREST LAWN LIFT STATION REPLACEMENT

SECTIONS		
DRAWING NUMBER	REV. NO.	SHEET
3504-00-405	D	

REDUCED PRINT - HALF SCALE

DETAILED DESIGN





The modern Thanksgiving

Kevin L. Ezinger and Patrick L. Stevens

sew·er soci·ol·o·gy, the science of society, social institutions, and social relationships viewed through the eyes of a sewer; specifically, the systematic study of the development, structure, interactions, and collective sewer use of organized groups of human beings.

Most sewer flows are characterized by repeatable diurnal patterns that vary across weekdays, weekends, and holidays. Differences in land use also are apparent, and distractions and disruptions of daily life often can be observed.

This month we take a closer look at Thanksgiving through the eyes of a sewer.

A set of comparative hydrographs of sewer use from a residential area in Southern California is provided. Weekdays (Monday through Thursday) are shown in green. Fridays are shown in light



green. Saturdays are shown in light blue, and Sundays are shown in darker blue. The individual weekdays during the week of

Thanksgiving are depicted in red in figures (e) through (d).

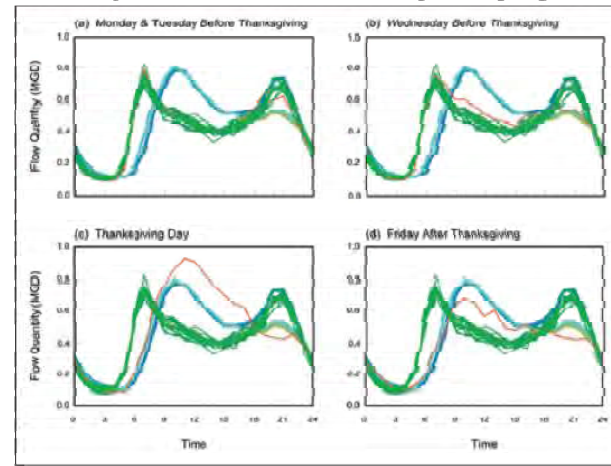
The Monday and Tuesday before Thanksgiving look like typical weekdays. Wednesday, what do you see? If you look closely, you will notice that Wednesday looks more like a Friday – a subtle hint that tomorrow is a holiday.

Thursday, Thanksgiving Day, has a distinct change in sewer use, with peak flows occurring around the time of the traditional Thanksgiving meal. The change in sewer use observed on Thanksgiving is larger than that observed on any other holiday in the United States. The Friday after Thanksgiving looks more like a Saturday, as the holiday lingers into the following weekend.

From our sewer sociology family to yours, have a happy Thanksgiving.

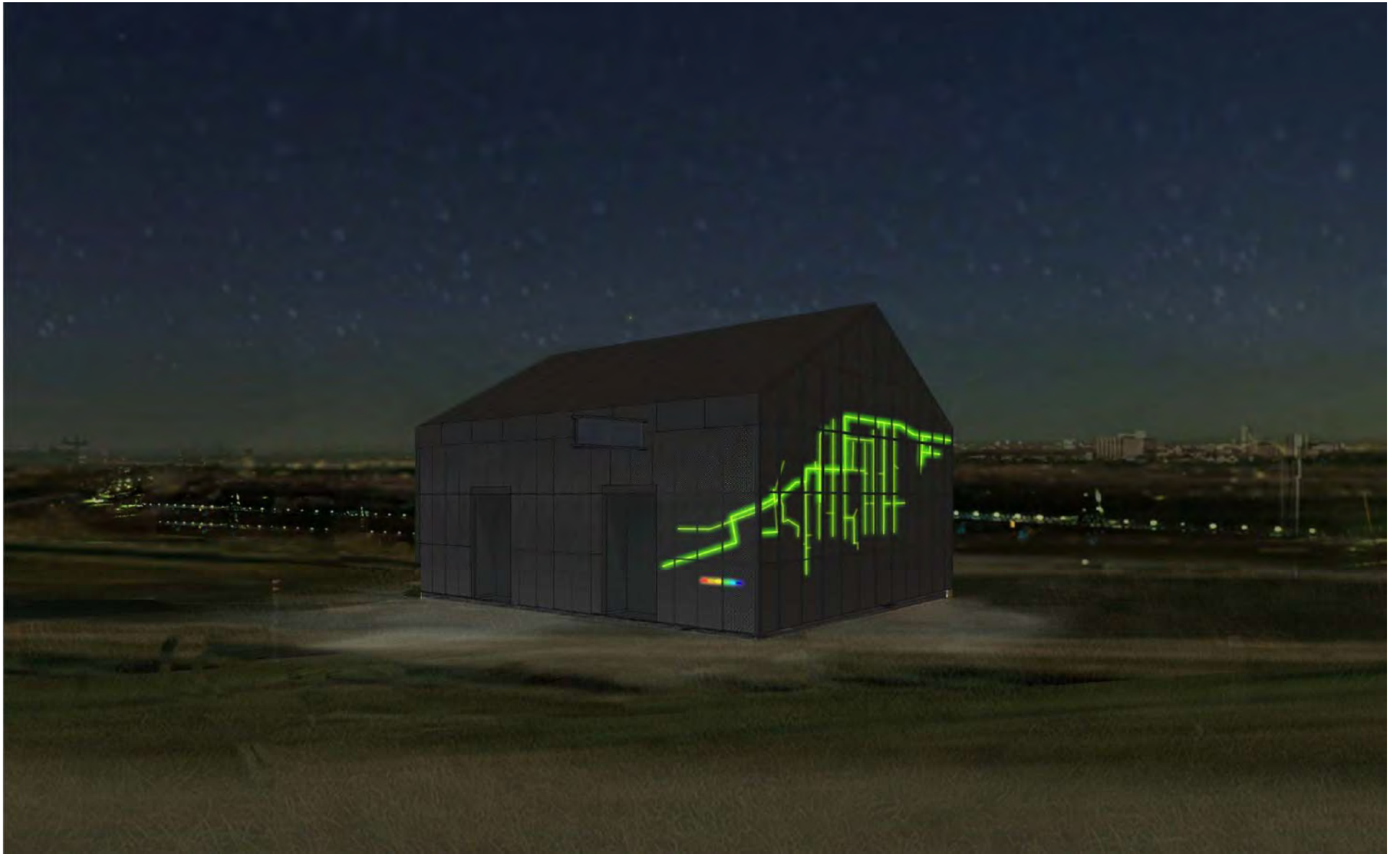
Kevin L. Ezinger is senior project engineer, and Patrick L. Stevens is vice president of engineering at ADS Environmental Services, a division of ADS LLC (Huntsville, Ala.).

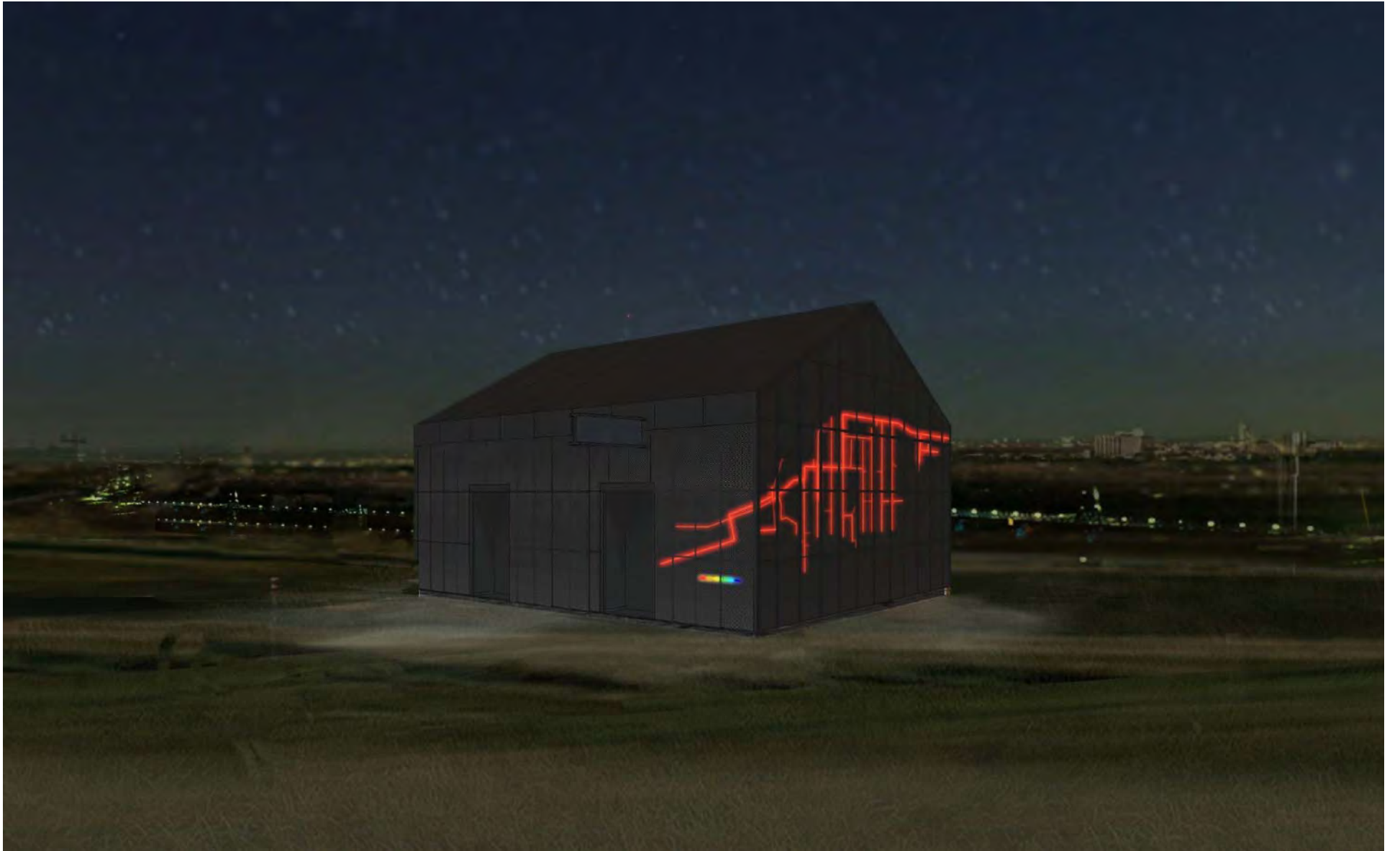
Sewer use patterns in a residential area during Thanksgiving week





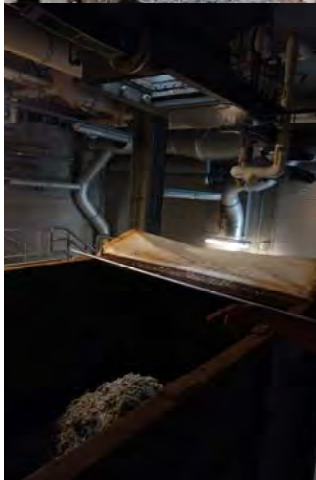














www.sansfacon.co.uk
info@sansfacon.co.uk
www.watershedplus.ca
www.watershedplus.tumblr.com

