

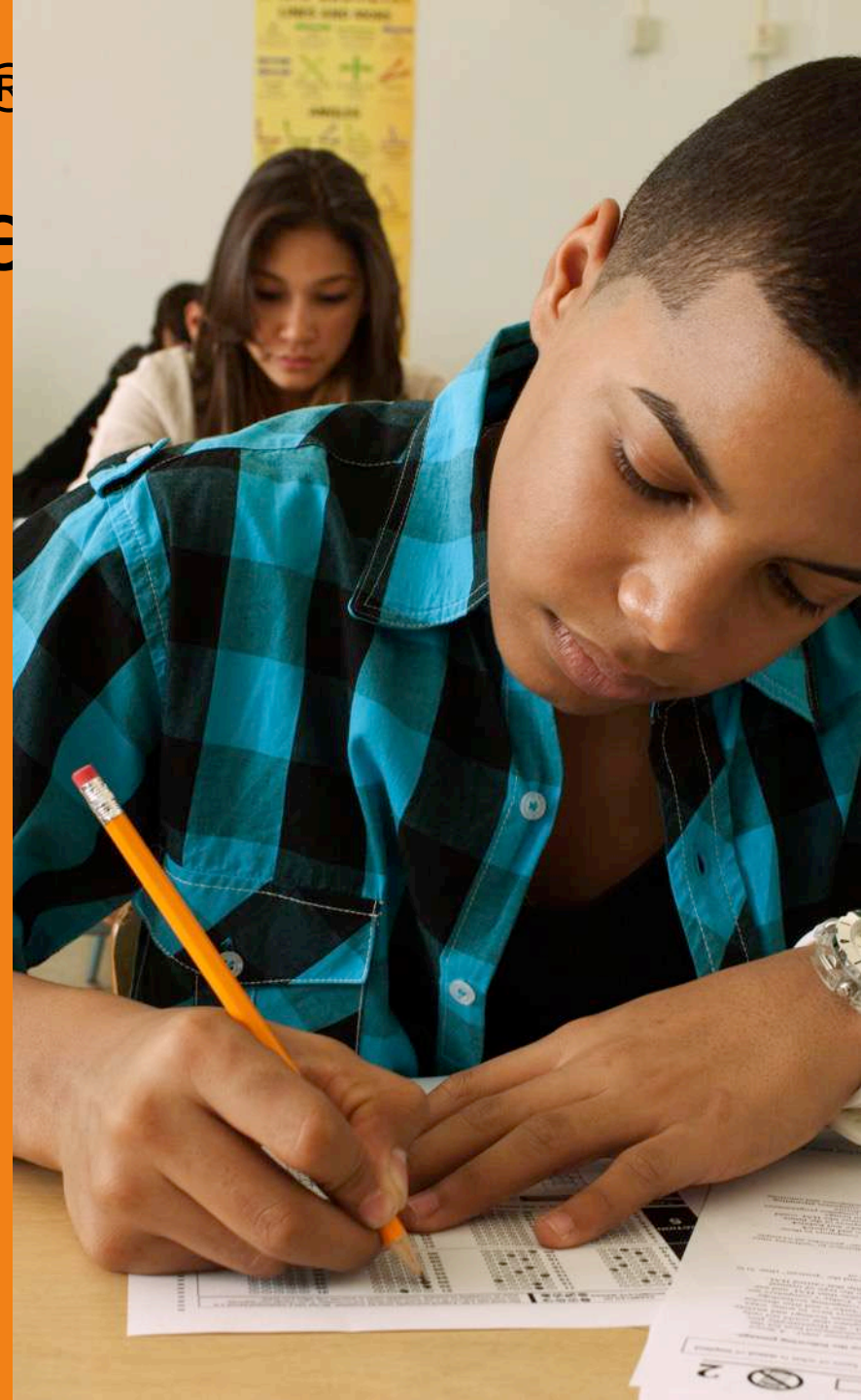
THE
NEW
SAT[®]

Learn why the SAT[®]

LEARN **WHY** THE
step for any college

SAT[®] IS AN

IMPORTANT STEP
FOR ANY COLLEGE-
BOUND STUDENT
TO **TAKE** AND HOW
IT IS FAIR FOR ALL.



Why take it

WHY

TAKE

IT

It is one of the **most widely used college admission tests** in the U.S.

Many schools also use it for **placement and academic counseling**, as well as **scholarships and merit aid**.

It helps students **show colleges what they know** and what they can do.

It's fair. The questions are rigorously researched and tested to make sure students from all backgrounds who have equal levels of preparation have an equal chance to do well.

Say hello to the new
SAY HELLO @college assess
TO **THE NEW**
STANDARD
IN COLLEGE
ASSESSMENT
WITH THE
NEW **SAT**®.



The New SAT®

**THE
NEW
SAT®**

More focused, clear, and useful.

**Better reflects the work students
are doing in school.**

**Better measures the skills
and knowledge needed to be ready
for college and career.**

**Connects students with opportunities,
including free practice tools on Khan
Academy® and college application fee
waivers for income-eligible students.**

Key calendar

MARCH 2016 WILL

MARK THE FIRST

ADMINISTRATION

OF THE NEW SAT®.

PLAN **YOUR** COLLEGE

ADMISSION PROCESS

WITH THESE KEY

CALENDAR DATES.



Mark your calendar

**MARK
YOUR
CALENDAR**

The new SAT[®] launches March 2016.

Students can take the current SAT now through January 2016 and/or the new SAT in or after March 2016.

MOST U.S. COLLEGES PLAN TO ACCEPT SCORES FROM EITHER VERSION FOR THE NEXT FEW YEARS.

One step in the
FROM PRACTICING
TO APPLYING,
TAKING THE **SAT**[®]
IS JUST ONE STEP
IN THE PROCESS OF
GETTING ADMITTED
TO COLLEGE.



From SAT[®] to college

**FROM
SAT[®] TO
COLLEGE**

Students thinking about college should:

Talk to their school counselor about the college search and application process.

Research colleges and make a list of schools they're interested in.

Register for the SAT and review college admission requirements.

Keep taking challenging courses and practice regularly to show they're ready for college-level work.

What's different a

WHAT'S

DIFFERENT

ABOUT THE

NEW **SAT**®?

TO SHOW YOU,

WE'VE **COMPARED**

THE CURRENT SAT

TO THE NEW **SAT**.

SAT®



The current SAT[®] compared to the

new SAT[®]

THE CURRENT SAT[®] COMPARED TO THE NEW SAT

Current SAT

Total testing time:

3 hours, 45 min.

4 sections: Critical Reading,
Writing, Mathematics, Essay

Essay: Required

Penalized for wrong answers

Score scale: 600 to 2400

New SAT

Total testing time:

3 hours (+50 minutes if taking the SAT with Essay)

2 sections (3 with SAT Essay):
Evidence-Based Reading and Writing, Math

Essay: Optional

No penalty for guessing

Score scale: 400 to 1600;
Essay scored separately

SAT FEE WAIVERS WILL CONTINUE TO BE AVAILABLE FOR ALL ELIGIBLE STUDENTS TO USE WITH EITHER VERSION OF THE SAT.

Five things students

FIVE THINGS

STUDENTS NEED
TO KNOW **ABOUT**
THE NEW SAT®.



Rights-only scoring

ABOUT THE NEW SAT®

1. Rights-only scoring.

Students **earn points**
for each correct answer.

There's **no penalty**
for guessing.

Students are encouraged to **read each**
question and select the answer they
think is best.

No obscure vocabulary

ABOUT THE NEW SAT®

2. No obscure vocabulary.

The new SAT focuses on words students are most likely to use again throughout college and career.

Students won't see words like "prevaricate" or "sagacious."

They will need to understand how words like "synthesis" or "alleviate" are used in context.

More focused math

ABOUT THE NEW SAT®

3. More focused math.

Focuses on the math skills most widely used in college and career.

Most questions are **multiple choice**.

Calculators are allowed on only one section. Some questions are easier to solve without a calculator.

Analysis, not opinion

**ABOUT THE
NEW SAT®**

4. Analysis, not opinion.

The SAT Essay will ask students to read a passage and:

Provide a written analysis of the text.

Use critical reasoning skills to show how the author builds an argument.

Use evidence from the text to support their analysis.

Students should check individual college websites to see if schools they're interested in require the SAT Essay.

Free, world-class test practice for

ABOUT THE NEW SAT®

all

5. Free, world-class test practice for all.

Free Official SAT Practice on Khan Academy® created in partnership with the College Board.

Personalized practice pathways provided to each student.

Full-length practice tests and thousands of sample questions.

Accessible through any computer with Internet access.

Materials also **available to print**.

What about the P

THE SAT[®] and PSAT

HAS BEEN

REDESIGNED,

BUT WHAT

ABOUT THE

PSAT/NMSQT[®]

AND **PSAT[™] 8/9?**



The Redesigned PSAT/NMSQT®

**THE
REDESIGNED
PSAT/NMSQT®**

Aligned with the new SAT®; common score scale with the SAT and PSAT™ 8/9.

October 2015 is the first administration. The PSAT™ 10 (the same test as the PSAT/NMSQT) is administered to sophomores in the spring.

More scholarship opportunities, connections to challenging course work, and access to fee waivers.

STUDENTS SHOULD TALK TO THEIR SCHOOL COUNSELOR IF THEY'RE INTERESTED IN TAKING THE PSAT/NMSQT.

PSAT™ 8/9

PSAT™ 8/9

Tightly aligned with the SAT® and PSAT/NMSQT®; common score scale.

Establishes a baseline for college and career readiness as students enter high school.

Offered in the **fall and spring**.

For more information

**FOR MORE
INFORMATION**

**About the redesigned
SAT[®], PSAT/NMSQT[®],
and PSAT[™] 8/9:**

sat.org/new

**About SAT practice on Khan
Academy:**

satpractice.org

For general SAT info:

sat.collegeboard.org

[@OfficialSAT](https://twitter.com/OfficialSAT)