

Grade 2 – Assignment for week of (4/27 to 5/1)

Insect Life Cycles:

Our mealworms have changed into the adult stage of their life cycle. This week we will review our darkling beetle life cycle and look at some other kinds of insect life cycles.

Task #1:

Read and review the words and share with a parent or guardian or think to yourself.

Science Vocabulary:

Insect:	an animal with (3) body parts and (6) legs
Life Cycle:	the steps and changes of a living thing throughout its life
Metamorphosis:	the process of changing from egg, larva, pupa, to adult
Chrysalis:	the pupa of a butterfly that is a hard cocoon
Nymph:	the larva of some insects that is small, but looks like the adult

Task #2:

Use one word from the science vocabulary listed above, to make an **acrostic** telling about our plant experiment. An acrostic uses each letter in the word to describe the word or tell a story about what you are learning.

An example for the word ***Insect*** might be:

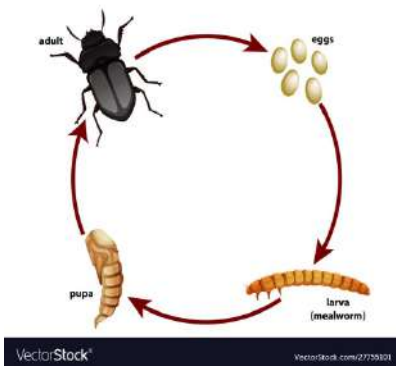
- I- Insects
- N- Need
- S- Sugar
- E- Even
- C- Cotton Candy
- T- Tastes Good

Task #3: Observing Life Cycles

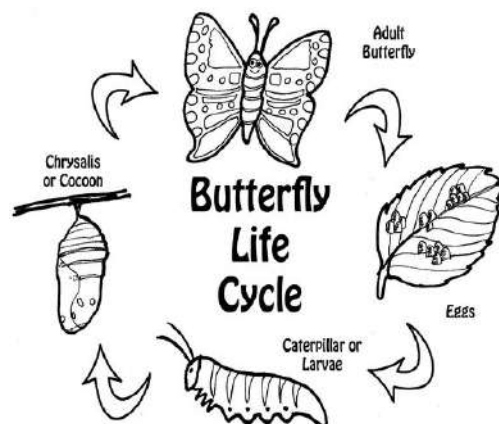
Look closely at the pictures below and use the science vocabulary words to answer the questions on the next page.

Picture #1

Darkling Beetle Life Cycle

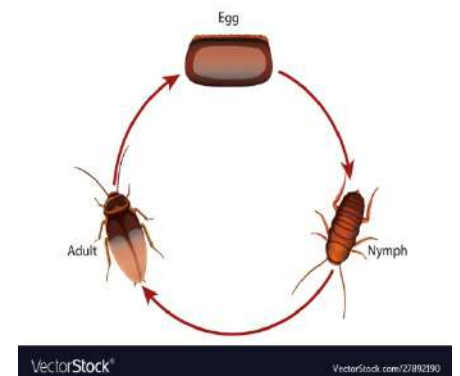


Picture #2



Picture #3

Life Cycle of an American Cockroach



Task #3 (Continued)

Use writing and your science vocabulary to explain what you think after taking a closer look at the pictures from the previous page.

Pictures #1, #2, and #3 show the life cycles of the darkling beetle, butterfly, and cockroach.

How do you think all the life cycles are in some ways the **same**?

Look closely at **Picture #1 and Picture #3**. How do you think these life cycles are different?

In **Picture #1**, the larva and the pupa are different. How do you think they also are the same?

Picture #1 has a 4-step lifecycle and **Picture #3** has a 3-step lifecycle.

What do you think is missing?

In **Picture #1** you see the mealworm (larva) and in **Picture #3** you see the nymph (larva). Both the mealworm and the nymph are the larva stages in their lifecycles.

What is a nymph and what does it change into?

Task #4: Creating your very own Insect Lifecycle

Use the blank life cycle chart below to create your own insect. Use each space to show the steps in the lifecycle of your very own original insect:

