

Name: _____

Date: _____

AP Psychology

EYE WEB QUEST

PART 1: WHAT IS AN EYE?

Instructions:

Use your smart phone or the school computer and fill out the following. There should be at least 1 question on the AP test on this. Then go to my school directory and open up U8 Web quest. Click on the URL so you don't have to type it all in.

1) Right click "open hyperlink" on the below website address.

http://www.myeyeworld.com/files/eye_structure.htm

List the FUNCTION of each of the parts of the eye:

a) lens:

b) cornea:

c) retina:

d) pupil:

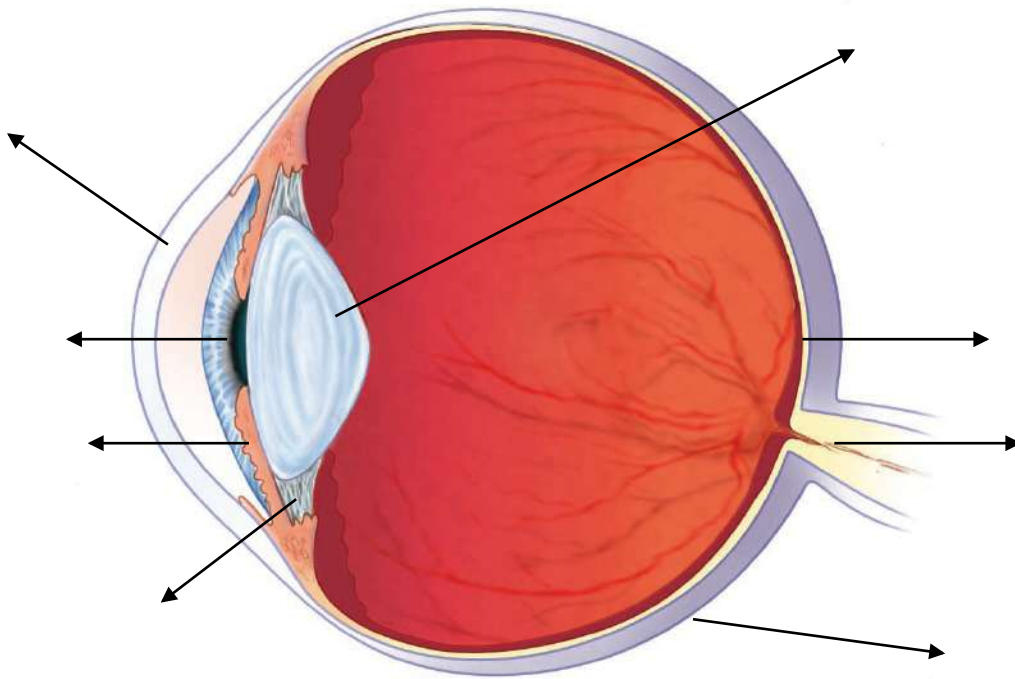
e) iris:

f) sclera:

g) optic nerve:

h) ciliary body (muscle):

[Type text]



Labels the parts of the eye

PART 2: Eye Disorders

1) Right click "Open hyperlink" on the website address below.

<http://camillasenior.homestead.com/optics4.html>

2) Answer the following questions.

a) How is light focused when someone is nearsighted? What kind of lens is used to correct this?

b) How is light focused when someone is farsighted? What kind of lens is used to correct this?

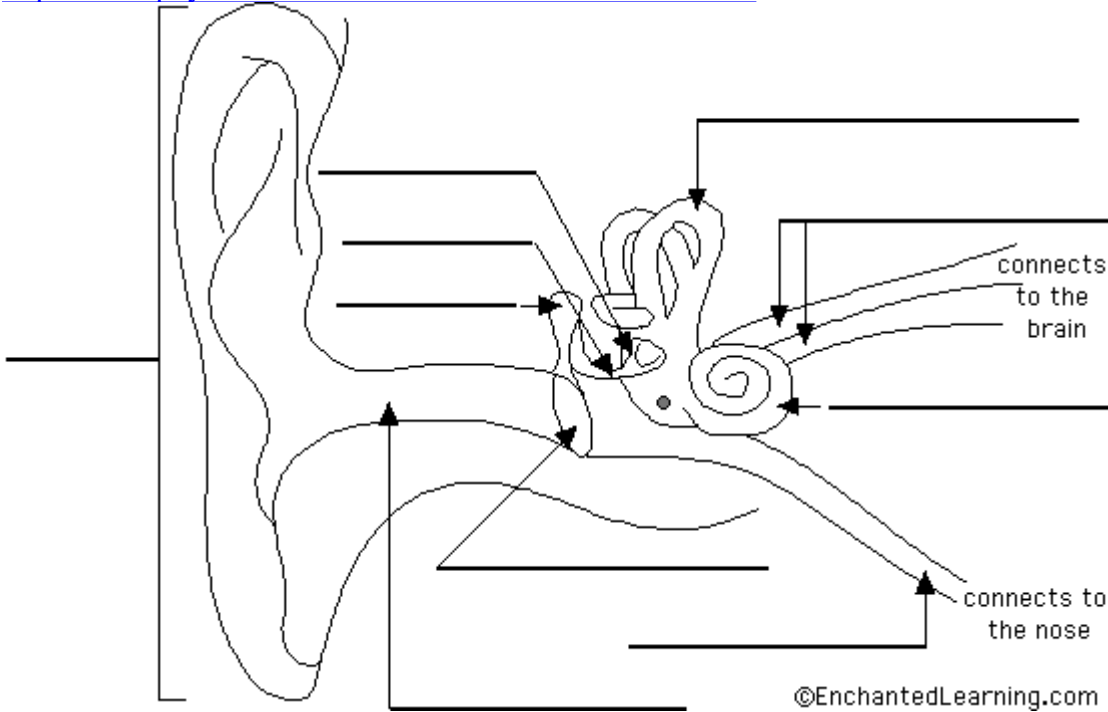
c) When a person looks at an object, what position is the object in when it hits the retina?

[Type text]

- d) Where is the message of the object sent to after it hits the retina? What part of the eye ships the information there.

THE EAR

<http://www.physicsclassroom.com/class/sound/u112d.cfm>



1. Label the parts of the ear above.
2. Look up on your phone and label the vestibular system and what it does.
3. Explain how sound travels from a source to when it's being interpreted by the brain.
4. State the function of the: Pinna, Eardrum, Ossicles, Cochlea Auditory Nerve and the Brain.

[Type text]

Use your Huffman book and turn to page 131. Read about Olfaction.

Explain “Lock and key theory”

Explain Malnic, Hirono, and Buck’s theory.

What groups have a better sense of smell.