



COVID-19 at School Next Steps

CCHS Public Health: Case Investigation and Contact Tracing Team

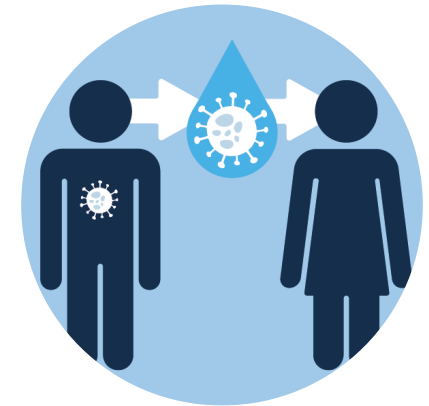
- CONTACT TRACING OVERVIEW
- CASE IDENTIFICATION AND CONTACT NOTIFICATION
 - WHY EARLY NOTIFICATION MAKES SENSE
- GOAL FOR LOCATIONS AND SCHOOL
- ROLES AND RESPONSIBILITIES
 - SCHOOL LIAISON
 - PUBLIC HEALTH INVESTIGATION AND TRACING TEAM
- SCENARIOS

* For elementary school waiver information check www.cchealth.org/for-schools-and-childcare

GOALS FOR THIS DISCUSSION

COVID-19 Transmission

- Primarily person-to-person from respiratory droplets
- Person is infectious starting from 2 days before symptom onset
- Person is no longer infectious
 - 10 days after symptom onset *or*
 - 10 days after test date if asymptomatic (no symptoms)



- Each school should identify 2-3 consistent staff members who will be assigned to COVID-19 response
- Roles:
 - Collect information about staff or students who may have been exposed to a case using attendance rosters (and other means)
 - Communicate with parents and staff. Letters have been linked on OED website and will be provided upon case opening
 - Coordinate flow of information between the health department and the school; between the school and students; and for those who need to know about potential exposures and next steps

School COVID-19 Response Team

HOW DOES CONTACT TRACING WORK?

If you test positive for COVID-19:



If you have been in contact with someone who has tested positive for COVID-19:



They will provide access to testing at no cost to you and medical care, if needed. You will also be asked to separate yourself from others in your home to protect those around you.



CASE IDENTIFICATION-
SCHOOL LEARNS FIRST: NOTIFY PHD FOR GUIDANCE
PUBLIC HEALTH LEARNS FIRST: NOTIFY SCHOOL

GUIDANCE FOR CASE: ISOLATE FOR 10 DAYS FROM TEST OR SX ONSET
GUIDANCE FOR SCHOOL: IDENTIFY CONTACTS
GUIDANCE FOR CONTACTS: QUARANTINE FOR 14 DAYS AND TEST AS APPROPRIATE

GUIDANCE FOR CASE AND CONTACTS: ANSWER THE PHONE, CASE INVESTIGATORS AND CONTACT TRACERS WILL REACH OUT TO YOU TO GATHER MORE INFORMATION AND OFFER GUIDANCE

RECOMMENDATION FOR SCHOOL SITES TO OPERATE IN COHORTS

IDENTIFY COHORT AND IN COLLABORATION WITH PHD CONSIDER NEED FOR QUARANTINE OF COHORTS (MAY BE MULTIPLES)

NOTIFICATION TEMPLATE FOR LETTER TO EXPOSED CONTACTS AVAILABLE ON WEBSITE

EARLY NOTIFICATION REDUCES THE SPREAD

CCHS CASE INVESTIGATION & CONTACT TRACING

- CONTACT WITH SCHOOL
- PROVIDE GUIDANCE AND CONFIRM ACCESS TO NOTIFICATION MATERIALS
- UPON RECEIPT OF CASE AND LINE LIST OF CLOSE CONTACTS
 - ASSIGNMENT TO A LOCATION INVESTIGATOR
 - LOCATION INVESTIGATOR WILL COMMUNICATE WITH LIAISON AS NEEDED
 - CONTACTS ENTERED INTO AN EXPOSURE EVENT AND LINKED TO POSITIVE CASE
 - CONTACT INFORMATION IS SENT TO CONTACT TRACING TEAM TO REACH OUT TO MONITOR--
 - CONTACTS REMAIN OPEN THROUGH QUARANTINE AND IF + NOTED, BECOME NEW CASE
 - EXPOSURE EVENT IS MONITORED FOR 14 DAYS. IF NO FURTHER + CASES-CLOSED
 - IF 3 OR MORE CASES IDENTIFIED IN 14 DAYS, IDENTIFIED AS AN OUTBREAK

OUTBREAK

- CDPH DEFINITION OF AN OUTBREAK IS 3 OR MORE CASES IN A 14 DAY PERIOD THAT CAN BE LINKED TO A SINGLE CONGREGATE COMMUNITY SETTING: CLASSROOM, OFFICE, GYM
 - OUTBREAK STATUS WOULD REQUIRE LIKELY LINKAGE OF CASES TO EACH OTHER
 - THREE CASES AT A SCHOOL AT THE SAME TIME MIGHT NOT BE LINKED, SO REQUIRES INVESTIGATION AND ESCALATION FOR REVIEW AND RECOMMENDATIONS.
 - CCHS WILL REACH OUT TO THE SCHOOL SITE AND PROVIDE AN ESCALATED LEVEL OF INVESTIGATION WHICH MAY INCLUDE SITE VISIT, MITIGATION PLAN, RECOMMENDATION FOR QUARANTINE OR TESTING FREQUENCY, CLEANING OVERVIEW.
 - EXPECT CLOSER CONTACT WITH CASE INVESTIGATION TEAM, SCHEDULED MEETINGS TO DISCUSS MITIGATION PLANS AS WELL AS INVOLVEMENT OF COMMUNICATIONS TEAM TO COORDINATE MESSAGING AND NEXT STEPS

Isolation vs. Quarantine

- Time-honored practice to prevent the spread of disease in a community
- **Isolation** = way to keep sick people who are infectious away from other people (Isolation for Ill)
 - Lasts until 10 days post-symptom onset *or* test collection date (if no symptoms) or 24 hours after symptoms resolve, whichever is longer
- **Quarantine** = TIMELY QUARANTINE IS ESSENTIAL. SCHOOL LIAISONS HAVE ACCESS AND ABILITY TO NOTIFY WELL BEFORE 24-48 HOURS IT MAY TAKE PHD TO CONNECT (IF CONTACT PICKS UP THE PHONE)
 - Lasts until 14 days from last exposure to the known COVID-19 positive individual



Q Search...



Multilingual Call Center: (844) 729-8410

Open Daily from 8 a.m. - 5 p.m.

Abierto diariamente de 8 a.m. - 5 p.m.

Get Tested

[Click to schedule an appointment](#)

(844) 421-0804

Unhealthy Air Advisory in Contra Costa County: [Click here for health tips and other helpful information.](#)

Advertencia por calidad insalubre del aire en el Condado de Contra Costa: [Haga clic aquí para obtener consejos de salud y otra información útil.](#)

Home

Get Tested

Common Questions

Health Services Updates

Resources

About COVID-19

Schools

Escuelas

Elementary School Waiver Process for In-Class Instruction

[Haga clic para ver el proceso para pedir una exención para el dictado de clases presenciales en escuelas primarias](#)

Starting Aug. 19, public and private elementary schools (TK – 6th grade) can submit applications online to local health and education officials to allow in-person instruction at their campuses.

Schools in counties such as Contra Costa that are on the [State's monitoring list](#) can't reopen unless granted a waiver by local and state health officials. Schools must show how they would safely conduct in-person classes to prevent the transmission of COVID-19 before being allowed to reopen. CCHS and the County Office of Education have developed a checklist with safety measures schools must take.

- [Click to view the Elementary School Waiver Request](#)
- [Click to download the Elementary School Waiver Checklist to Return to In-Class Instruction](#)
- Click below for COVID-19 Contact Tracing Tools for Schools
 - [Letter for Exposed Staff](#)
 - [Letter for Exposed Students](#)
 - [Letter for Non-exposed Staff or Student](#)
 - [Letter for Healthcare Provider](#)
 - [School Line List Template](#)
- [Click for additional resources and guidance for schools](#)

Contact Info and Guidance

- **Email:** Covid.Schools@cchealth.org
 - For school liaisons and administrators
- **Multilingual Call Center:** [\(844\) 729-8410](tel:(844)729-8410)
 - **Option #8 for Schools; for community inquiries (parents, citizens, etc.)**
- **Designated line for Schools:** 925-608-5315
 - For school liaisons and administrators
- **Testing:** [\(844\) 421-0804](tel:(844)421-0804)
- **Websites:**
 - www.coronavirus.cchealth.org/for-schools-and-childcare
 - www.cccoe.k12.ca.us/news/spotlight/information_about_coronavirus



COVID School Scenario #1

**Student or Staff with COVID-19 Symptoms
(e.g., fever, cough, loss of taste or smell, difficulty breathing)**

Action:

- Send home
- Recommend testing
- School/classroom remain open

Communication:

- No action needed

COVID School Scenario #2

Student or Staff is Close Contact* with a confirmed COVID19 case

Action:

- Send home
- If contact in community, contact tracing unit at PHD will reach out.
- Advise contact to ANSWER THE PHONE
- Quarantine for 14 days from last exposure date - DO NOT ALLOW BACK TO SCHOOL FOR 14 DAYS
- Recommend testing if symptoms (but will not shorten 14- day quarantine)
 - If positive test during quarantine, must isolate 10 days from symptom onset or test date, whichever is more
- School/classroom remain **open**

Communication:

- Consider school community notification of a known contact

**A contact is defined as a person who is <6 feet from a case for >15 minutes. In some school situations, it may be difficult to determine whether individuals have met this criterion and an entire cohort, classroom, or other group may need to be considered exposed, particularly if people have spent time together.*

COVID School Scenario #3

Student or Staff is Confirmed COVID-19 case infection

Action:

- **Notify** the local public health department (COVID.Schools@cchealth.org)
- **Isolate** case and exclude from school for 10 days from symptom onset or test date
- **Identify** close contacts, **quarantine & exclude** exposed contacts (likely entire cohort**) for 14 days after the last date the case was present at school while infectious
- Disinfection and cleaning of classroom and primary spaces where case spent significant time
- School remains **open**

Communication:

- School community notification of a known case (letter to exposed and non-exposed)

***A cohort is a stable group with fixed membership that stays together for all courses and activities (e.g., lunch, recess, etc.) and avoids contact with other persons or cohorts.*

COVID School Scenario #4

Student or Staff Tests Negative after Symptoms

Action:

- May return to school 24 hours after symptoms resolve
- School/classroom remain **open**

Communication:

- Consider school community notification if prior awareness of testing

COVID School Scenario #5

Student or Staff is a Household Member of Someone Who is Quarantined (i.e. a "contact of a contact")

Action:

- No action needed
- Staff and student should be encouraged to monitor for symptoms
- If quarantined HH member becomes symptomatic, staff or student should also quarantine

Communication:

- No action needed

COVID School Scenario #6

Student or Staff is Reported to be a Contact to a Positive Case via Social Media or Other (i.e. third-party reports, rumors, etc.)

Action:

- No action needed, because reports cannot be substantiated
- Health department **cannot** confirm/deny this information due to privacy laws

Communication:

- No action needed; however school may want to issue statement about why no action is being taken

School Closure Considerations

- Individual school closure is recommended based on:
 - the number of cases
 - the percentage of the teacher/students/staff that are positive for COVID-19
 - following consultation with the Local Health Officer
- Individual school closure may be appropriate when there are multiple cases in multiple cohorts at a school or when at least 5% of the total number of teachers/student/staff are cases within a 14-day period, depending on the size and physical layout of the school
- The Local Health Officer may also determine school closure is warranted for other reasons, including results from public health investigation or other local epidemiological data



After Closure, When May School Reopen?

- Schools may typically reopen after 14 days and the following have occurred:
 - Cleaning and disinfection
 - Public health investigation
 - Consultation with the local public health department

2020-2021 School Reopening

A Guide to Address the Challenges of COVID-19



CONTRA COSTA COUNTY
Office of Education
learn • lead • achieve



Questions?