

Electricity

ROW 1	ROW 2	ROW 3	ROW 4	ROW 5
Q \$100	Q \$100	Q \$100	Q \$100	Q \$100
Q \$200	Q \$200	Q \$200	Q \$200	Q \$200
Q \$300	Q \$300	Q \$300	Q \$300	Q \$300
Q \$400	Q \$400	Q \$400	Q \$400	Q \$400
Q \$500	Q \$500	Q \$500	Q \$500	Q \$500

\$100 Question

A unit of measure for electrical power.



\$100 Answer

What is a watt?



\$200 Question

The continuous flow of electrical charges.



\$200 Answer

What is an electrical current?



\$300 Question

An arrangement of parts so that electrical current passes along a single pathway.



\$300 Answer

What is a series circuit?



\$400 Question

A built up electric charge on an object or material.



\$400 Answer

What is a static electricity?



\$500 Question

The pathway that electric current follows.



\$500 Answer

What is an electric circuit?



\$100 Question

An arrangement of parts so that the electric current passes along more than one pathway.



\$100 Answer

What is a parallel circuit?



\$200 Question

A material through which negatively charged particles flow easily.



\$200 Answer

What is a conductor?



\$300 Question

A device that converts chemical energy into electrical energy.



\$300 Answer

What is a battery?



\$400 Question

Units of electricity carried on tiny particles.



\$400 Answer

What are electrical charges?



\$500 Question

A material through which negatively charged particles do not flow easily.



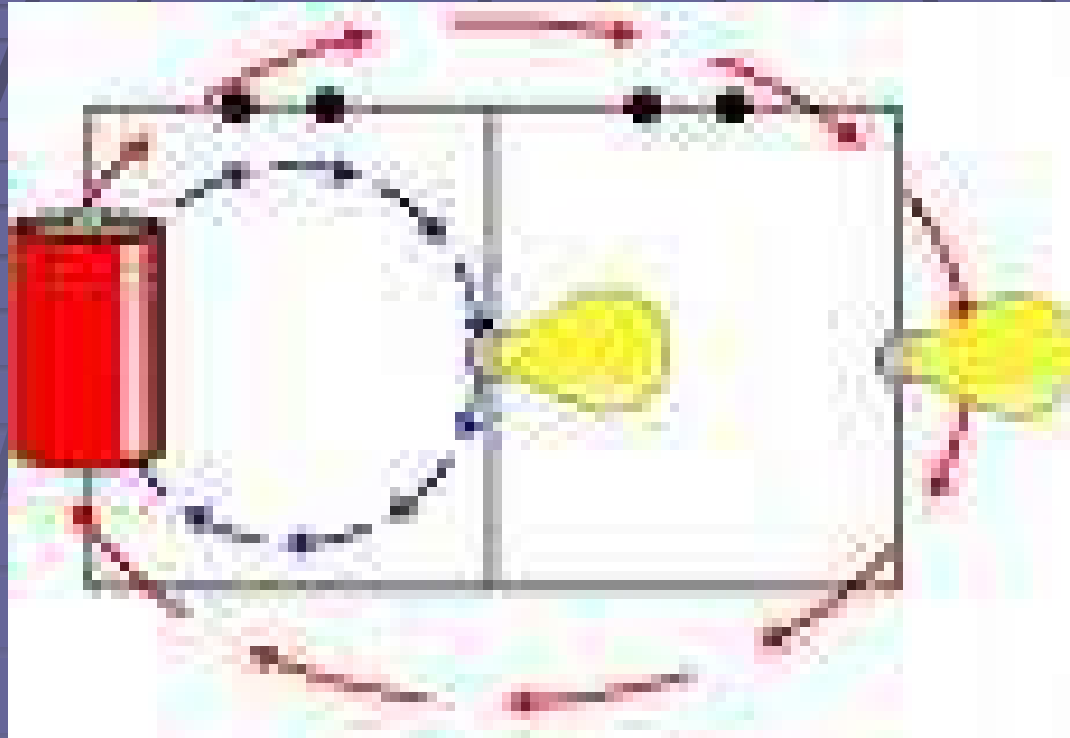
\$500 Answer

What is an insulator?



\$100 Question

This type of circuit is:



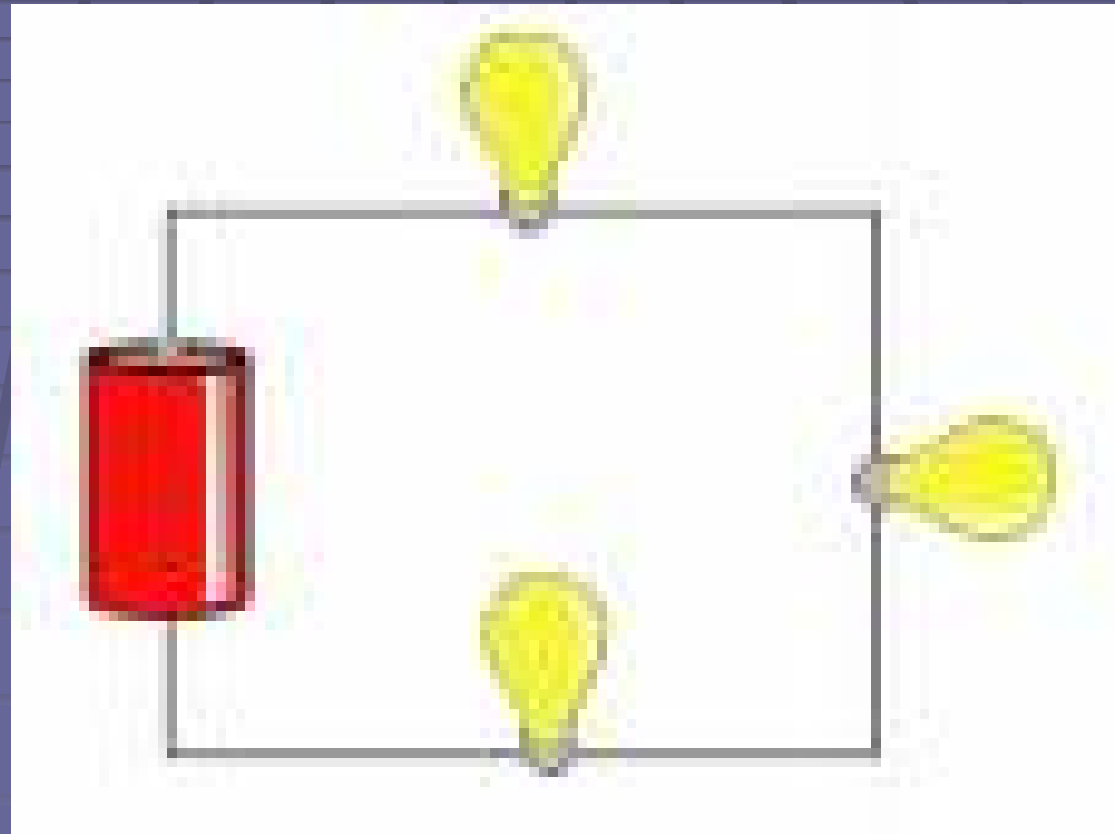
\$100 Answer

What is a parallel circuit ?



\$200 Question

This type of circuit is:



\$200 Answer

What is a series circuit?



\$300 Question

What type of charges will attract each other?



\$300 Answer

What are a positive charge and a negative charge?



\$400 Question

An object that has an equal number of positive and negative charges.



\$400 Answer

What is a neutral object?



\$500 Question

A hair dryer changes electrical energy into what forms of energy.



\$500 Answer

What are thermal energy (heat) and motion?



\$100 Question

A television changes electrical energy into what forms of energy.



\$100 Answer

What are sound, light, and thermal energy (heat)?



\$200 Question

A radio changes electrical energy into what forms of energy.



\$200 Answer

What are sound and thermal energy (heat)?



\$300 Question

A clothes dryer changes electrical energy into what forms of energy.



\$300 Answer

What are thermal energy (heat) and motion?



\$400 Question

How do the same charges react...



\$400 Answer

What do they repel each other?



\$500 Question

Name the function of the battery in a circuit



\$500 Answer

What is a power source?



\$100 Question

Name the function of the insulated wire in a simple circuit.



\$100 Answer

What is a conductor of electricity?



\$200 Question

Name the function of a light bulb in a simple circuit.



\$200 Answer

What is an object that changes electric energy into light energy?



\$300 Question

How do unlike charges react...



\$300 Answer

What are they attracted to each other?



\$400 Question

Doorbells, flashlights, classroom lights are examples of...



\$400 Answer

What are simple circuits with a switch?



\$500 Question

A computer uses 100 Watts per Hour. State how much electricity would be used if it was left on for 5 hours



\$500 Answer

What is 500 Watts?

