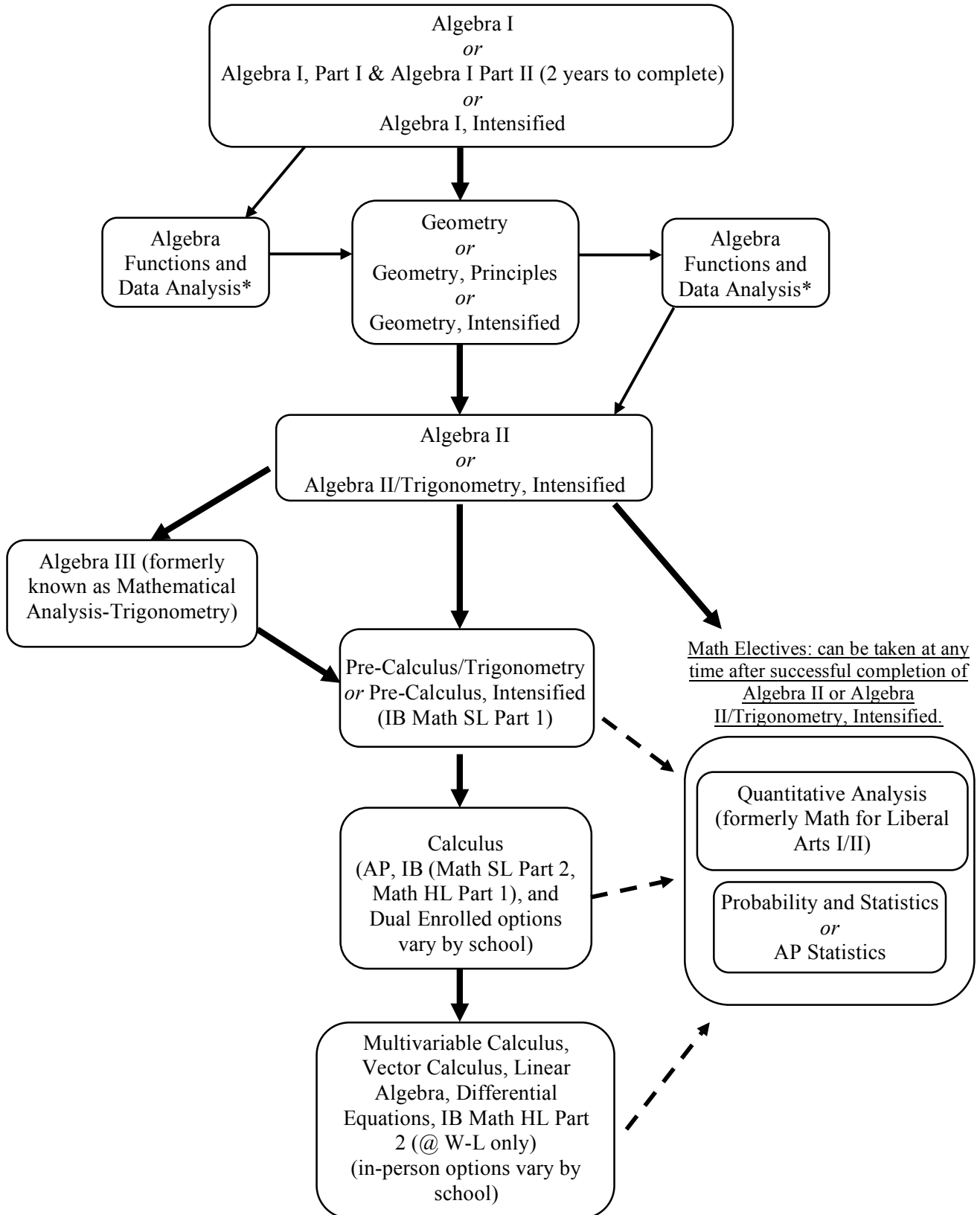


Arlington Public Schools' Math Course Pathways from Algebra I and on (2019-2020)

Students will enter these pathways when enrolled in any Algebra I course (which will occur at different grade levels). There are multiple pathways and courses that students may take depending upon their readiness. Please see specific course descriptions for prerequisite requirements



For specific IB and Dual Enrolled courses not mentioned here, please see the index of courses offered at individual high schools. Students needing additional support may be concurrently enrolled in Algebra I, Geometry, or Algebra II and a Strategies course.

*AFDA may be taken after Algebra I and before Geometry OR after Geometry and before Algebra II in high school only.