

Diagram 1

Acalanes Union High School District

Mathematics Pathways – Common Core aligned (2015/16 – 2018/19)

Math Pathways: Grade 8 – 12

↓ 9th grade entry class ↓ Non common 9th grade entry class

→ Common math pathway → Non common pathway

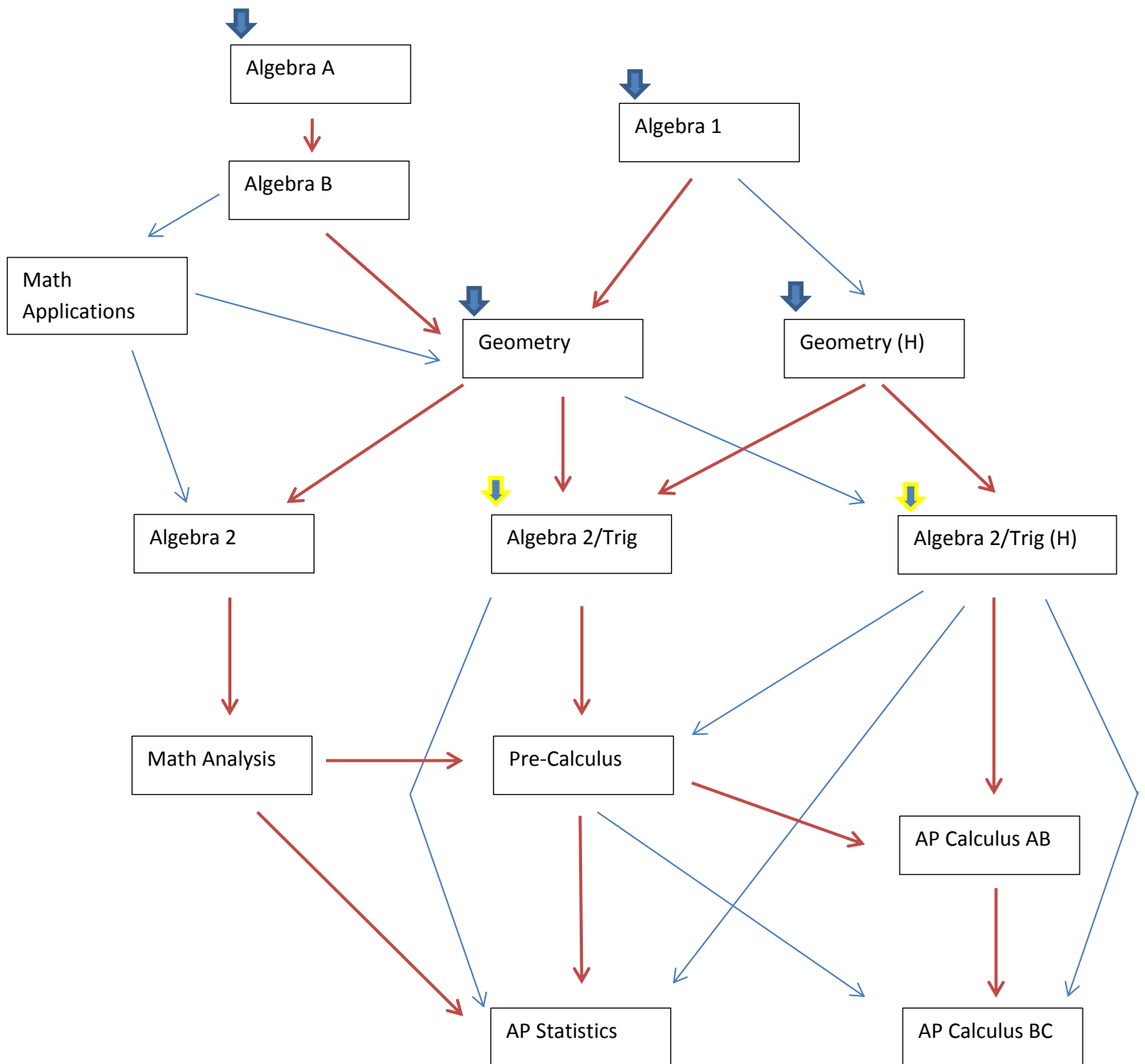
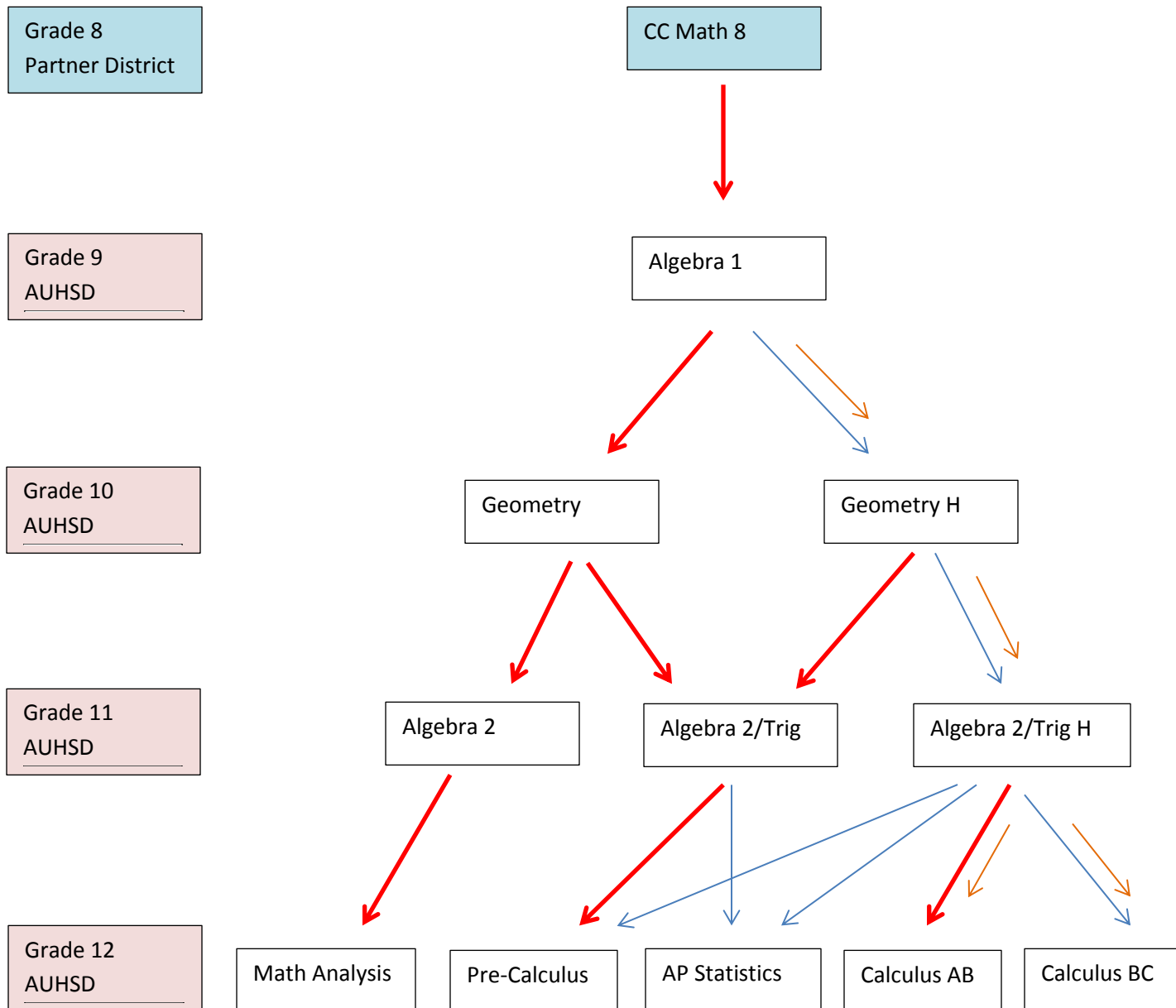


Diagram 2

Math Pathways Grade 8 – 12; Common Core Pathway (includes high school acceleration option)

→ Pathways marked in red represent the common (recommended) pathway

→ Pathways marked with orange arrows represent the High School Acceleration Pathway



**AP Statistics is commonly taken concurrently with AP Calculus BC or AP Calculus AB*

Diagram 3

Math Pathways Grade 8 – 12; Expended Pathway

→ Pathways marked in red represent the common pathway

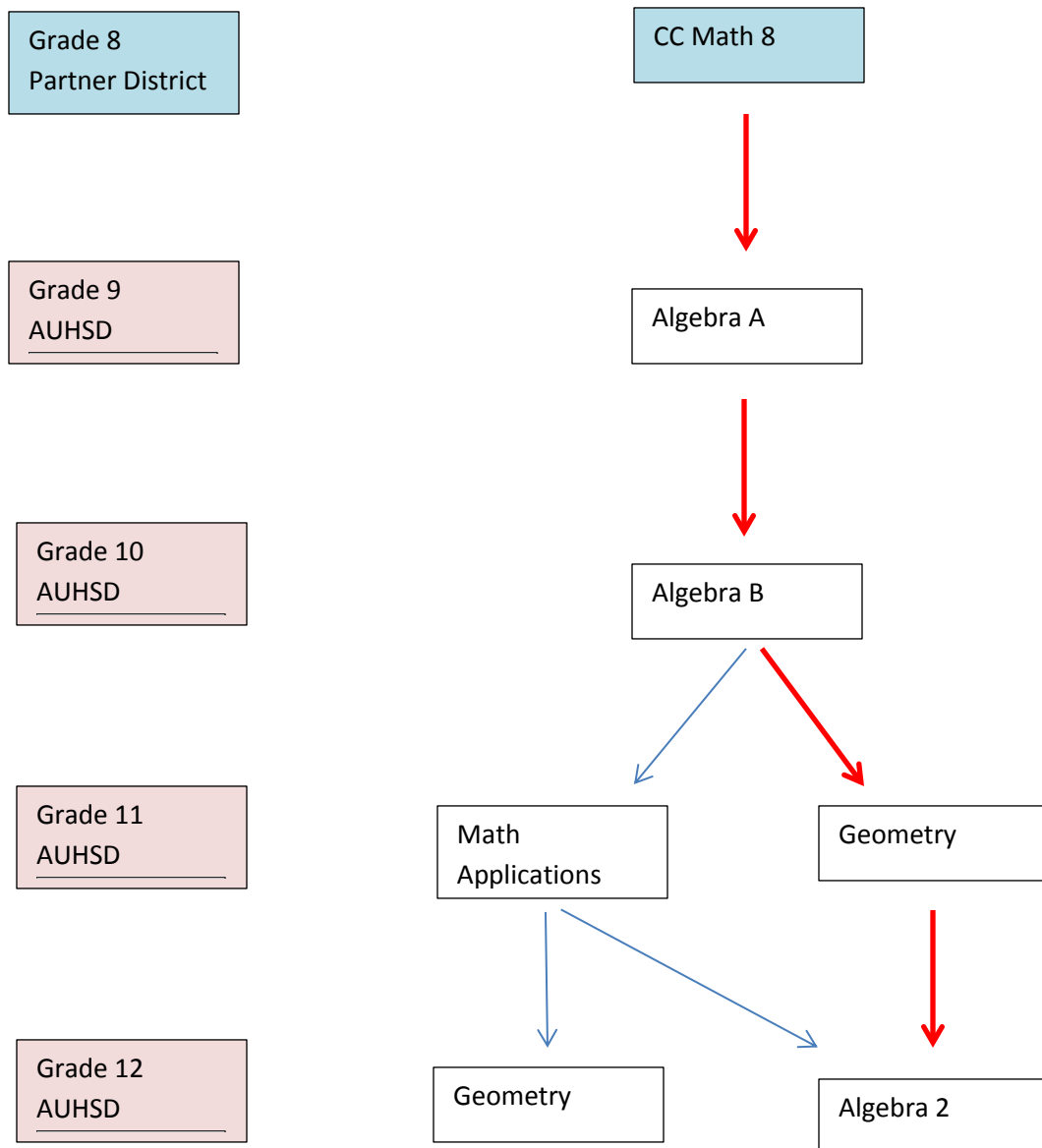
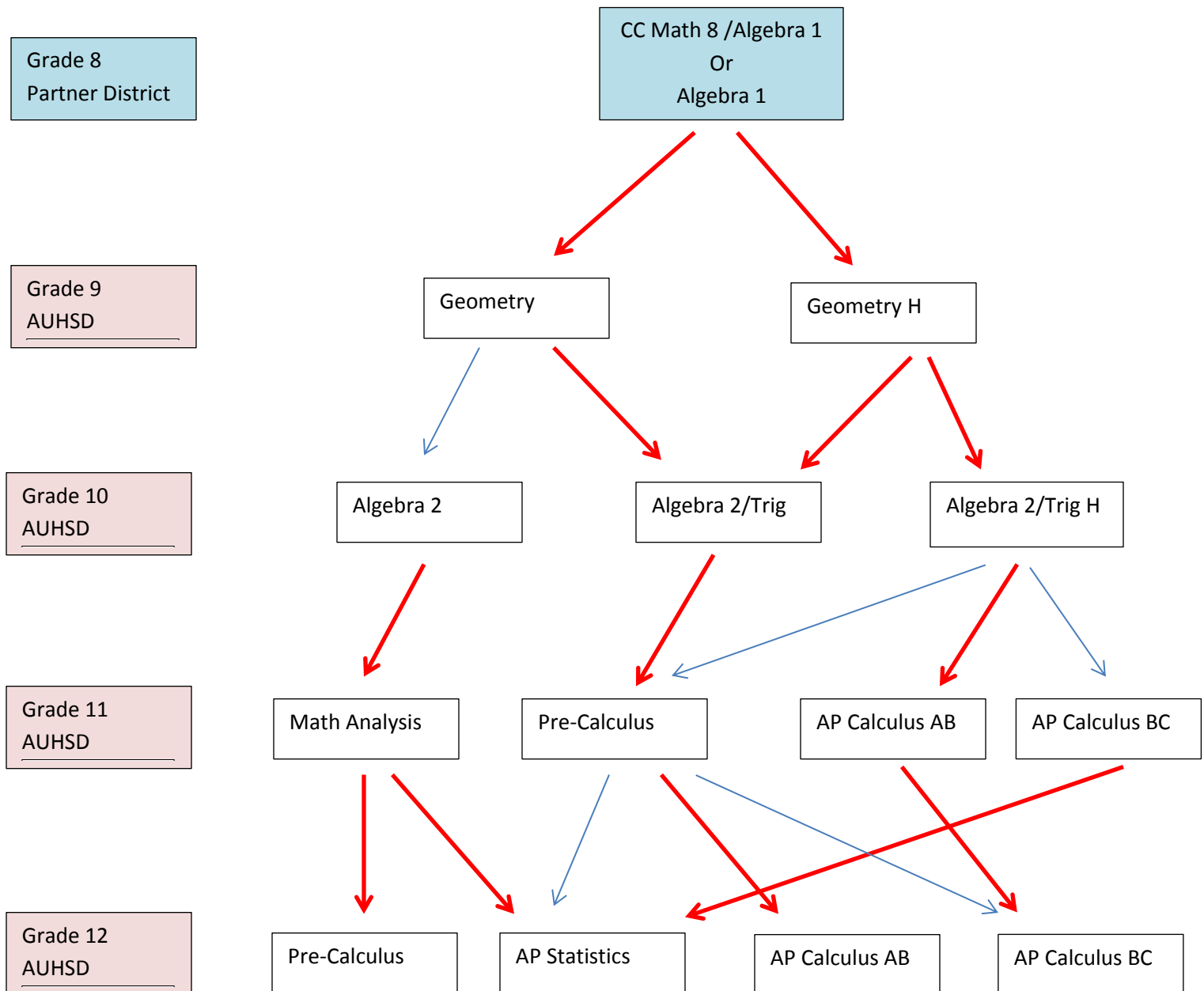


Diagram 4

Math Pathways Grade 8 – 12; Accelerated Pathway

**Pathway for students who have accelerated in Middle School*

→ Pathways marked in red represent the common (recommended) pathway



**AP Statistics is commonly taken concurrently with AP Calculus BC or AP Calculus AB*