

Diagram 1

Acalanes Union High School District

Mathematics Course Pathways

Math Pathways: Grade 8 – 12

↓ 9th grade entry class
 ↓ Non common 9th grade entry class

→ Common math pathway
 → Non common pathway

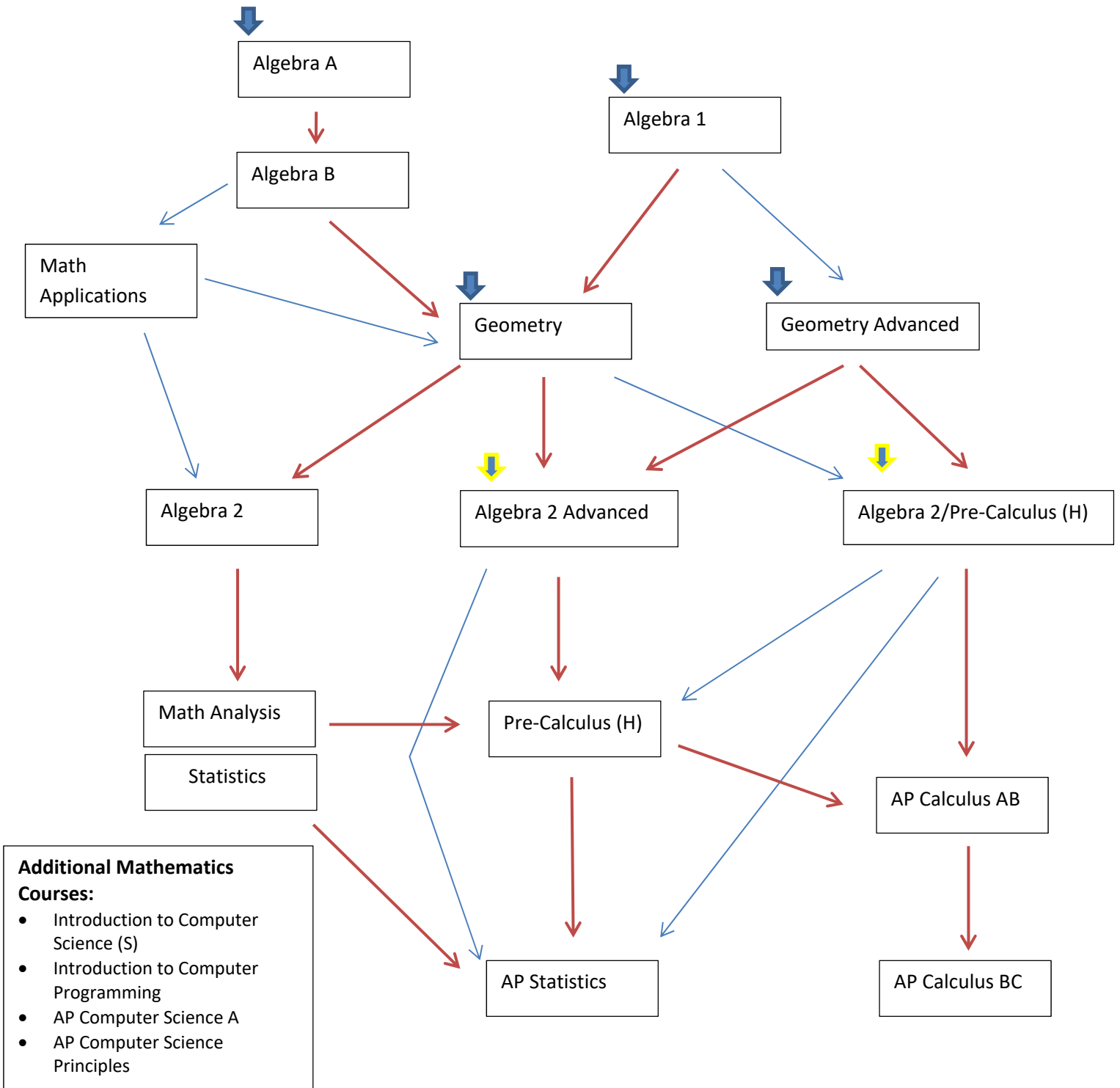
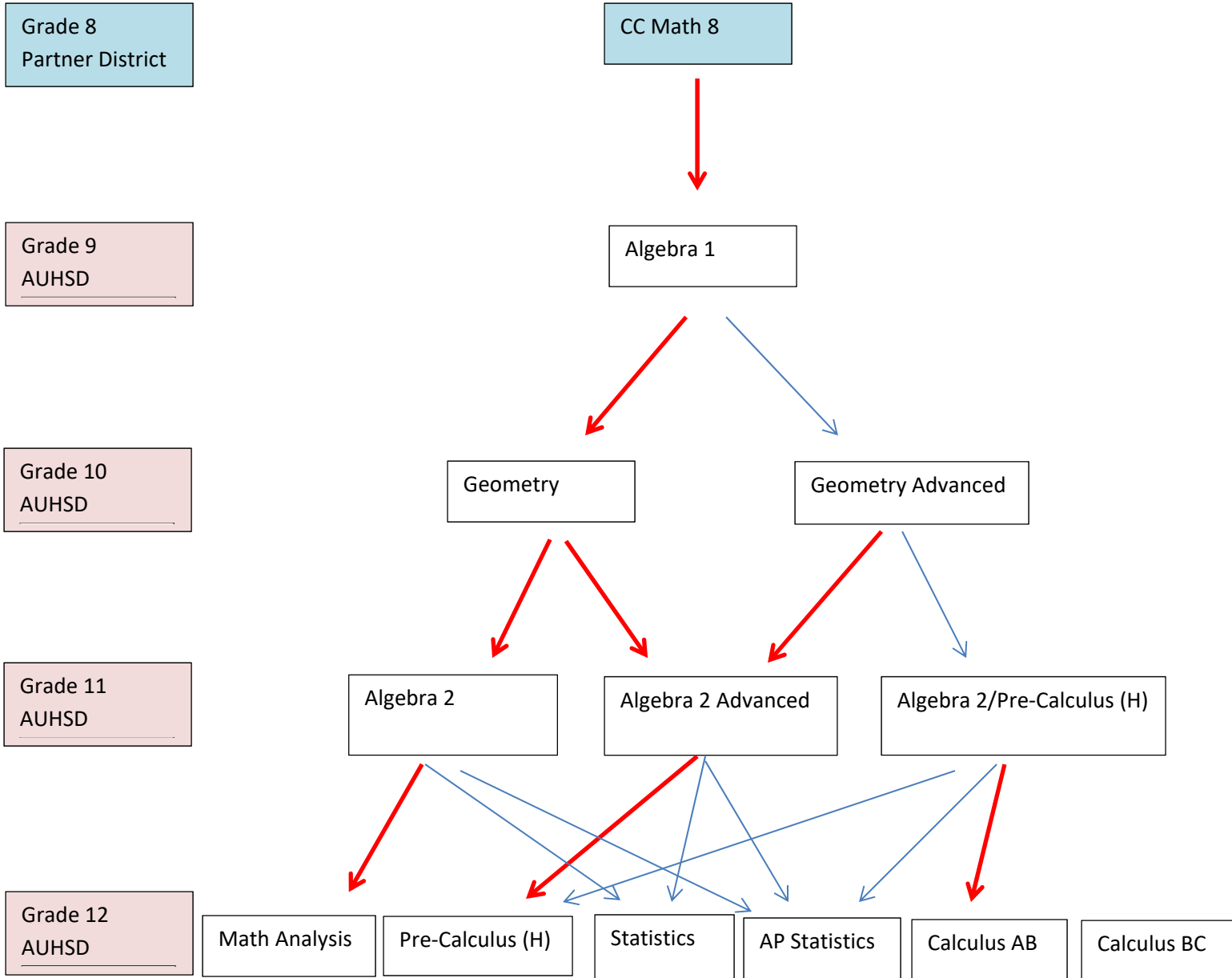


Diagram 2

Math Pathways Grade 8 – 12;

Mathematics Pathways (includes high school acceleration option)

→ Pathways marked in red represent the common (recommended) pathway



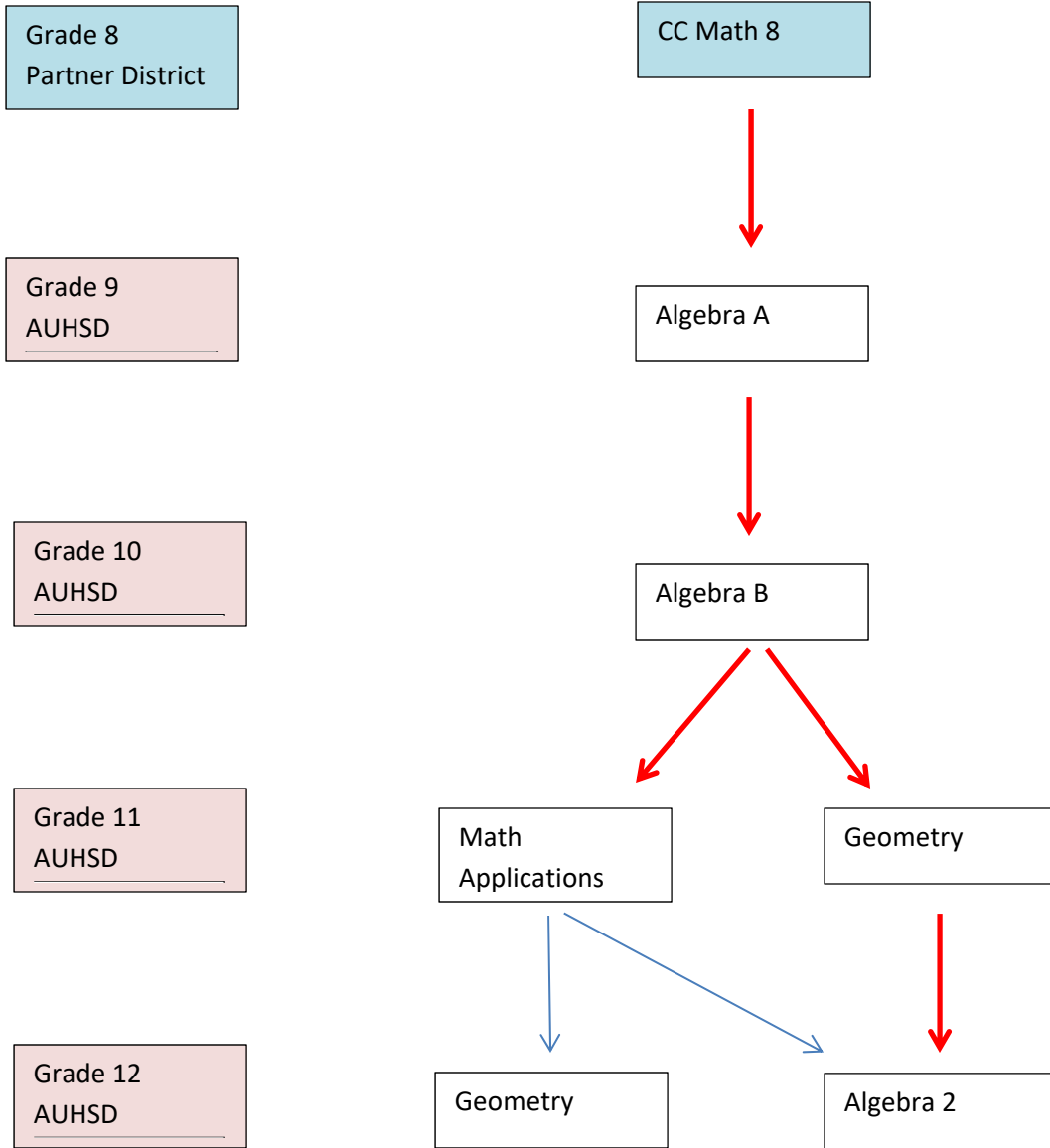
- Additional Mathematics Courses:**
- Introduction to Computer Science (S)
 - Introduction to Computer Programming
 - AP Computer Science A
 - AP Computer Science Principles

**AP Statistics is commonly taken concurrently with AP Calculus BC or AP Calculus AB*

Diagram 3

Math Pathways Grade 8 – 12; Expanded Pathway

→ Pathways marked in red represent the common pathway



Additional Mathematics Courses:

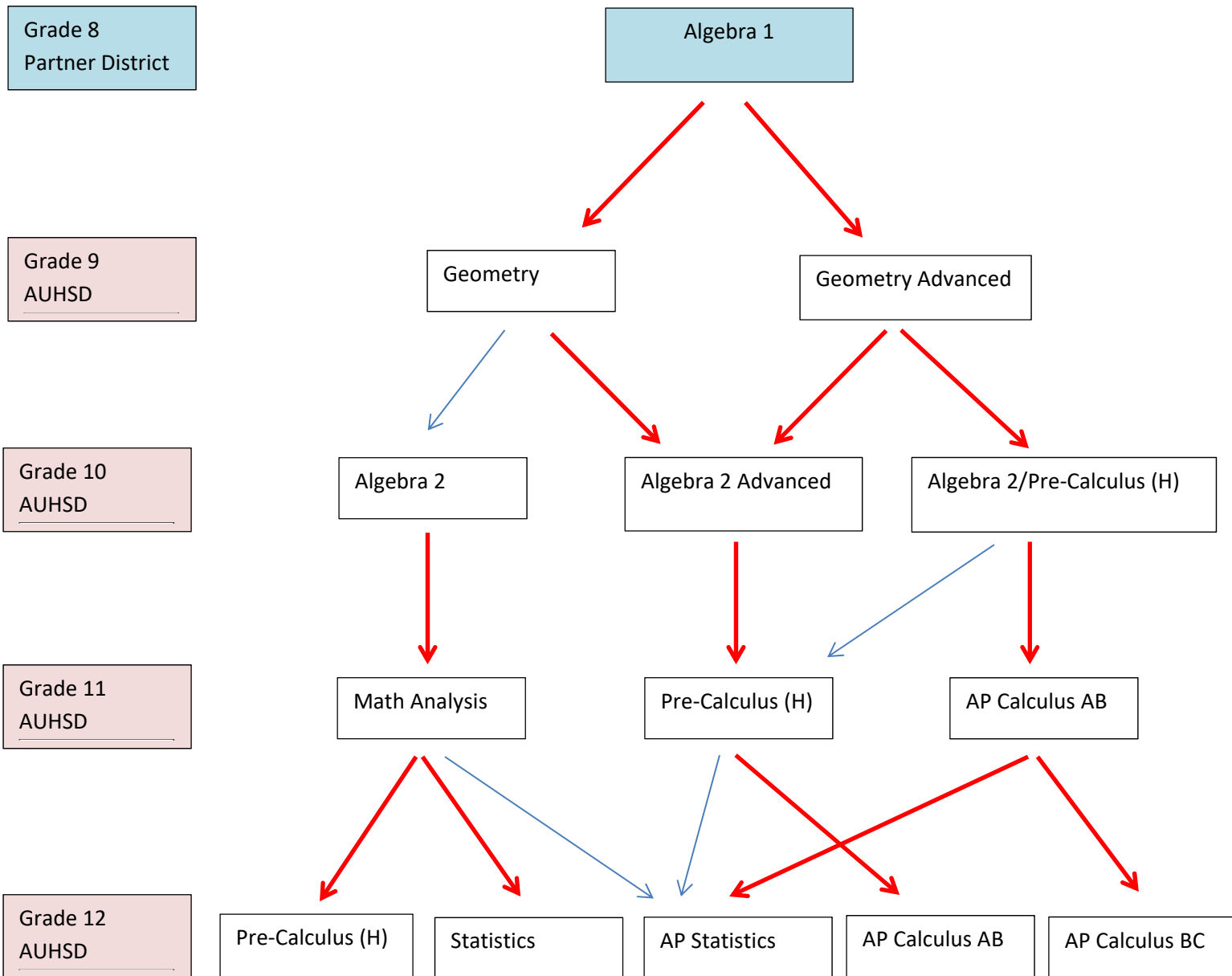
- Introduction to Computer Science (S)
- Introduction to Computer Programming
- AP Computer Science A
- AP Computer Science Principles

Diagram 4

Math Pathways Grade 8 – 12; Accelerated Pathway

**Pathway for students who have accelerated in Middle School*

→ Pathways marked in red represent the common (recommended) pathway



- Additional Mathematics Courses:**
- Introduction to Computer Science (S)
 - Introduction to Computer Programming
 - AP Computer Science A
 - AP Computer Science Principles

**AP Statistics is commonly taken concurrently with AP Calculus BC or AP Calculus AB*