

Entering 7th Grade? Your district password has changed!



Help! My district
password isn't working!



Your New District Password

★Effective July 19, 2021



Capital First Initial (first name)
Lowercase second initial (last name)
Last five digits of your Student ID

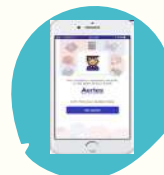


Example: For the name John Doe
with a Student ID of 123456789
the password would be Jd56789



Your username remains the same.
Log into Classlink with your
username and your new password.

Find Student ID



Log into Aeries
Portal. Tap on
STUDENT INFO and
then DEMOGRAPHICS.
Your Student ID is in
the first column.

